

**CITY OF CRAIG
COUNCIL AGENDA - AMENDED
AUGUST 20, 2020
COUNCIL CHAMBERS 7:00 PM**

ROLL CALL

Mayor Tim O'Connor, Dave Creighton, Hannah Bazinet, Jim See, Julie McDonald, Michael Kampnich, Chanel McKinley

CONSENT AGENDA

Items listed below will be enacted by one motion. If separate discussion is desired on an item, that item may be removed and placed on the regular meeting agenda.

- City Council Meeting Minutes of July 16, 2020.

HEARING FROM THE PUBLIC

- Open for public comment
- Bev Davies Public Comment

READING OF CORRESPONDENCE

- From Alaska Permanent Capital Management-June Statement
- From Southeast Senior Services – Summary of Service Delivery
- Preliminary Quarterly Sales Tax Report
- Alaska DNR Timber Sale Notice

CONSIDERATION OF RESOLUTIONS AND ORDINANCES

UNFINISHED BUSINESS

- Update on CARES Funding.
- Update on COVID-19 Response

NEW BUSINESS

- Review Preliminary Decision from Alaska Department of Natural Resources on Tideland Conveyance.
- Review Applications for City of Craig Round II CARES Act Economic Relief Program
- Review Solicitation Letter for Medevac Flight Memberships
- Appoint Election Judges for October 6 Municipal Election
- Review Draft Municipal Election Newsletter

COUNCIL COMMENTS

ADJOURNMENT

From: jbdavies@kpunet.net
Sent: Friday, August 14, 2020 4:40 PM
To: cityclerk@craigak.com; planner@craigak.com
Cc: Diane Liljegren; Jack and Bev Davies
Subject: Covid Resolution sent to Governor Dunleavy asking for a state quarantine mandate

Follow Up Flag: Follow up
Flag Status: Flagged

Please forward this email to the Craig City Council.

Thank you.

Bev Davies
907-225-2747
907-617-7207

From: jbdavies@kpunet.net [mailto:jbdavies@kpunet.net]
Sent: Friday, August 14, 2020 4:10 PM
To: 'boroclerk@kgbak.us'
Cc: Diane Liljegren (dliljmit@kpunet.net); Jack and Bev Davies (jbdavies@kpunet.net)
Subject: Covid Resolution sent to Governor Dunleavy asking for a state quarantine mandate

Please forward this email to the Mayor and all Assembly members and Borough Manager's office.

Please note: Anchorage had 80 new cases yesterday, Juneau 12 and Alaska 107.

Anchorage has shutdowns, both Anchorage and Juneau have mask mandates unyet their numbers are increasing daily.

Testing is not enough due to false negatives in the 14 day incubation period so 14 day quarantine is needed.

School buildings will be closed in Anchorage and Juneau this fall but not in Ketchikan. We have to protect ourselves now before we become like Anchorage and Juneau especially since there is no travel intrastate travel mandates.

| | 8/13/20 | Western Australia (pop. 2.6 million) | Alaska (pop.745,000) | Anchorage (pop. 288,000) | Juneau (pop. 31,974) |
|--------------|----------------|---|-------------------------|-----------------------------|-------------------------|
| New cases | 2 (quar.trav.) | | 107 (102r+ 5n) | 80 (79r+1n) | 12 (11r+1n) |
| Active cases | 3 | | 3471 (2854r+ 617n) | 1747 (1667r+80n) | 153 (90r+63n) |
| Recovered | 632 | | 1371 (1192r+179n) | 748 (692r+56n) | 56 (44r+12n) |
| In Hospitals | 0 | | 38 (ICU on vent 3) | Unknown | Unknown |
| Deaths | 9 | | 27* | 14* | 1* |
| Total cases | 644 | | 4869 (3881r+774n) | 2509 (2373r+136n) | 210 (115r+74n) |

*Alaska residents only

Thank you.

Bev Davies
907-225-2747
907-617-7207



From: jbdavies@kpunet.net [mailto:jbDavies@kpunet.net]

Sent: Tuesday, August 11, 2020 1:19 AM

To: 'Crum, Adam R (HSS)'; 'BoroughAssembly@juneau.org'; 'wwmas@muni.org'; 'mayor@muni.org'; 'cityclerk@fairbanks.us'; 'council@fairbanks.us'; 'assembly@cityofsitka.org'; 'assembly.departmentheads@cityofsitka.org'; 'assembly@petersburgak.gov'; 'clerk@wrangell.com'; 'administrator@craigak.com'; 'cityclerk@craigak.com'; 'edevries@palmerak.org'; 'nalley@palmerak.org'; 'mayor@city.kodiak.ak.us'; 'bhammond@nomealaska.org'; 'lonnie.mckechnie@matsugov.us'; 'clerk@cityofseward.net'; 'cityclerk@kenai.city'; 'spierce@valdezak.gov'; 'council@soldotna.org'; 'clerk@cityofhomer-ak.gov'

Cc: 'Zink, Anne B (HSS)'; 'Stevens, Ben A (GOV)'; 'Stedman, Bert K (LEG)'; ortiz4akhouse@gmail.com; 'Diane Liljegren'; 'kims@ktn-ak.us'; Jack and Bev Davies (jbDavies@kpunet.net)

Subject: RE: Covid Resolution sent to Governor Dunleavy asking for a state quarantine mandate

Commissioner Crum,

Thank you very much for responding to my email.

We have studied the new travel mandates that are effective August 11, 2020 and it is our opinion they are going in the right direction but are not enough.

We have multiple concerns about the updated Mandate #10.

1. Ketchikan's municipal attorney argues that he and other municipal attorneys believe that boroughs and cities on the road or marine highway system don't have the legal authority to mandate travel restrictions exceeding what the state mandates. Hence the resolution asking Governor Dunleavy to change to a 14 day travel quarantine which would protect the whole state.

2. With over 5 million confirmed Covid-19 cases and over 163,000 deaths in the US and surging numbers in Alaska it is reasonable for Alaska to protect itself with a quarantine requirement. In British Columbia, as required in all of Canada, all travelers (residents or not) are required to quarantine for 14 days upon arrival from any international destination, the US included. Canadian regulations require 14 day quarantine with no symptoms or 14 day isolation with symptoms.

Mandate 10 allows a potentially infected traveler, until they obtain a second test at the end of the 14 day incubation period, to wander in our communities putting us at risk even though that person isn't allowed in certain places such as restaurants, bars, gyms, etc.

Will the traveler be given a printed list of the numerous restrictions?

How will enforcement occur? Will there be penalties for non-compliance?

3. Ketchikan is geographically isolated despite being served by ferries and one jet airport. There is one small critical access hospital that serves Ketchikan, Metlakatla on Annette Island (which has a 14 day quarantine program) and numerous communities on Prince of Wales Island (no quarantine programs). If Ketchikan or the other communities it serves have Covid outbreaks, our small hospital would be unable to manage a large number of Covid patients. A state mandate with the 14 day quarantine for interstate and intrastate travel would help protect our small medical facility from being overwhelmed.

4. The "strict social distancing" requirement in the new mandate is too complicated for the average traveler to understand and comply with. The co-author of this resolution, Dr. Diane Liljegren MD states, "I am a board certified family medicine physician, Alaska license 2793. The Covid health mandate 10 scheduled to begin August 11 is dense in detail. I had to read it twice before I was sure I understood it. I think it is likely that people without a college education and a health care background will not understand it fully, which in turn will limit compliance."

A simple 14 day quarantine where the traveler is known to be in one place is easier to understand, comply with and monitor.

Quarantine is more easily enforceable than social distancing with complicated rules. People could be hired to door knock to monitor compliance. For example, in Victoria, Australia 3000 door knocks found 800 people were not at home.

5. Many people are disinclined to follow state health mandates due to misunderstanding of the severity of the pandemic. We can attest from reading several people's comments in social media and public comment that many people are uninformed about the seriousness and contagiousness of Covid-19. Comments such as denial there is a pandemic and it's all an overreaction are common. Questions about even the need for testing abound. Last night an Anchorage resident wrote in social media that her husband recently tested positive and they were both under 14 day quarantine. She was upset and disbelieving of the need for this, likening Covid to the flu. So far they have no symptoms with a week to go. However, she stated, "Lots of walks/runs, purging old stuff and donating it and kicking my husband out for long motorcycle rides." They are both going in the car to pick up their groceries curbside. When I questioned her she said they were allowed out for exercise and groceries.

Is that true? What are the rules for quarantine/isolation for Covid positive people?

Are people hired to monitor/track infected individuals or arriving travelers for compliance?

What are the penalties for non-compliance?

6. We are concerned about the large number of travelers to Alaska who do not get Covid testing on entry to the state. Testing out of state travelers is an excellent approach that we absolutely agree with, but data indicates that currently only 52% of travelers get tested before entering Alaska, which means 48% of travelers currently don't get tested. The fact is that it can be difficult for travelers to obtain tests in some areas down south. We agree with you that the second test at the end of the 14 day incubation period is necessary, especially due to the occurrence of asymptomatic people. The CDC states that the incubation period for Covid is up to 14 days so someone could test positive at any time in that 14 day period.

How many people get the second test and when? Are prepaid vouchers left unused?

Is there a plan to effectively trace travelers until their second test result is back?

7. The new mandate doesn't address intrastate travel other than allowing intrastate traveler airport testing effective August 11, 2020. However, there are only 5 airport testing sites in the whole state, is that correct? With 3,181 active Covid cases in over 62 Alaskan communities we need to mandate intrastate travel testing and quarantine the same as interstate/international travel until we can limit active cases in the state to those travelers already in quarantine.

Which Alaskan airports have airport testing sites?

What happens at isolated communities like Wrangell and Petersburg that we believe don't have airport testing sites?

Why isn't Alaska mandating testing, with a second test at the end of the 14 day incubation period, and eventually quarantine for intrastate travel?

We urge simple 14 day quarantine for all travel, interstate, international and intrastate, be mandated by the state. In the model already previously discussed there are exemptions for required medical travel and essential workers. Alaska could use the model as a template to customize but please don't remove the basic 14 day quarantine and please add enforcement and penalties for non-compliance with monitoring as they do in other areas where this is working to protect their citizens.

We brought this proposal forward to highlight a proven model that is extremely successful in creating a Covid-free environment thanks to the safety net at the borders. The people are happy living as normally as possible with no mask mandates, no longer needing any intrastate travel restrictions and their schools, workplaces and recreational activities are all open safely.

Thank you for your consideration,

Bev Davies 907-225-2747/907-617-7207

Dr. Diane Liljegren 907-225-6808/907-821-7006

| 8/08/20 | Western Australia (pop. 2.6 million) | Alaska (pop. 745,000) | Anchorage (pop. 288,000) | Juneau (pop. 31,974) |
|--------------|---|--------------------------|-----------------------------|-------------------------|
| New cases | 0 | 100 (98r+ 2n) | 59 (59r+0n) | 6 (6r+0n) |
| Active cases | 4 | 3178 (2594r+ 584n) | 1590 (1515r+75n) | 123 (63r+60n) |
| Recovered | 629 | 1269 (1091r+178n) | 686 (630r+56n) | 55 (43r+12n) |
| In Hospitals | 0 | 41 (ICU on vent 4) | Unknown | Unknown |
| Deaths | 9 | 26* | 14* | 1* |
| Total cases | 642 | 4473 (3711r+762n) | 2290 (2159r+131n) | 179 (107r+72n) |

*Alaska residents only

From: Crum, Adam R (HSS) [mailto:adam.crum@alaska.gov]

Sent: Monday, August 10, 2020 10:04 AM

To: jbdavies@kpunet.net; BoroughAssembly@juneau.org; wwmas@muni.org; mayor@muni.org; cityclerk@fairbanks.us; council@fairbanks.us; assembly@cityofsitka.org; assembly.departmentheads@cityofsitka.org; assembly@petersburgak.gov; clerk@wrangell.com; administrator@craigak.com; cityclerk@craigak.com; edevries@palmerak.org; nalley@palmerak.org; mayor@city.kodiak.ak.us; bhammond@nomealaska.org; lonnie.mckechnie@matsugov.us; clerk@cityofseward.net; cityclerk@kenai.city; spierce@valdezak.gov; council@soldotna.org; clerk@cityofhomer-ak.gov

Cc: Zink, Anne B (HSS); Stevens, Ben A (GOV); Stedman, Bert K (LEG); Rep.Dan.Ortiz@akleg.com; Diane Liljegren; kims@ktn-ak.us

Subject: RE: Covid Resolution sent to Governor Dunleavy asking for a state quarantine mandate

Thank you so much for your email and your proactive approach and containing COVID in Ketchikan. As you mention, keeping COVID out is an important tool and strategy, especially in communities like Ketchikan and as you mention a single test approach will miss many cases. This is the reason in our most recent travel updates we tried to build on lessons learned and make the new travel guidelines even more protective. Here a few highlights.

1. By requiring a test 72 hr before entering and not offering a test without payment for non-residents, we hope to have more people get tested before they come. Currently, 52% of travelers do get tested before entering, but we hope to increase this.
2. The new travel portal is designed to encourage people to think about lodging, transportation and other logistics before they get here. This approach has worked well in British Columbia and we are building on it
3. We did not remove the second test – but in fact tried to make the language more clear about the importance on minimizing interaction for a full 14 day period and a test at the end is the only way this can be shortened. We are happy to revisit this language, but the goal was to make it more clear and to really push for that full 14 day incubation period where people who travel are not around others. We also support this second.
4. The Ketchikan EOC and community is welcome to use CARES funds like Bethel for food and lodging to support travelers. As mentioned, travelers now have to detail their whole plan for the 14 days to minimize that interaction.

ADAM CRUM | Commissioner
Alaska Department of Health and Social Services
3601 C Street, Suite 902 | Anchorage, AK 99503
907.269.7800 (office)
Adam.Crum@alaska.gov

From: jbdavies@kpunet.net [mailto:jbdavies@kpunet.net]
Sent: Friday, August 7, 2020 7:43 PM
To: BoroughAssembly@juneau.org; wwmas@muni.org; mayor@muni.org; cityclerk@fairbanks.us; council@fairbanks.us; assembly@cityofsitka.org; assembly.departmentheads@cityofsitka.org; assembly@petersburgak.gov; clerk@wrangell.com; administrator@craigak.com; cityclerk@craigak.com; edevries@palmerak.org; nalley@palmerak.org; mayor@city.kodiak.ak.us; bhammond@nomealaska.org; lonnie.mckechnie@matsugov.us; clerk@cityofseward.net; cityclerk@kenai.city; spierce@valdezak.gov; council@soldotna.org; clerk@cityofhomer-ak.gov
Cc: Zink, Anne B (HSS) <anne.zink@alaska.gov>; Stevens, Ben A (GOV) <ben.stevens@alaska.gov>; Crum, Adam R (HSS) <adam.crum@alaska.gov>; Stedman, Bert K (LEG) <senator.bert.stedman@akleg.gov>; Rep.Dan.Ortiz@akleg.com; Diane Liljegren <dlijmit@kpunet.net>; kims@ktn-ak.us; Jack and Bev Davies <jbdavies@kpunet.net>
Subject: Covid Resolution sent to Governor Dunleavy asking for a state quarantine mandate

I am writing this email to inform other Alaskan communities that last night the Ketchikan City Council voted to send Governor Dunleavy a request to mandate 14 day quarantine with appropriate testing for all arriving interstate and intrastate travelers in Alaska.

Even the new state mandates effective August 11, 2020 are still a swiss cheese approach. Travelers are asked to “practice social distancing” while they await test results. There is a complicated definition for social distancing, allowing the traveler to be active in the community, which no one will read and absolutely no one will enforce. One negative test is not enough. When the viral load is low a false negative will result plus they have at least 72 hours to get infected after being swabbed, with their travel time being quite high risk. We can’t afford to allow even one infected person to potentially spread it everywhere in our communities. Instead of trying to flatten the curve Western Australia (WA) has now gone over 100 days with no COVID-19 cases in their general population, the only active cases are travelers already in quarantine. Please see the attached Ketchikan Daily News article explaining how they did it. Also see the Premier, Mark McGowan’s Official Facebook page for an easy reference with links to the government website for further details. The resolution refers to the high success this approach is in the state of Western Australia where today they only have 6 active cases, travelers identified already in quarantine, compared to Alaska’s total of 3025 active cases. The 14 day quarantine is a proven method in Western Australia and New Zealand where they practice strict enforcement, and now a few US states are implementing it and some Alaskan communities.

This is the link for the Western Australia Government COVID-19 response which includes 14 day quarantine (a model that Alaska could adapt to suit):
<https://www.wa.gov.au/government/covid-19-coronavirus>

This is the link for the New York Travel Advisory which includes New Jersey and Connecticut showing Alaska as one of the 35 restricted states requiring Alaskans to 14 day quarantine upon arrival in NY, NJ, CT. No mention of a negative test as an option.
<https://coronavirus.health.ny.gov/covid-19-travel-advisory>

As of 2 days ago, New York City has checkpoints at all the entry points to monitor arriving travelers for the 14 day quarantine:
<https://www.npr.org/sections/coronavirus-live-updates/2020/08/05/899337278/nyc-setting-up-quarantine-checkpoints-for-travelers-from-covid-19-hotspots>



Metlakatla also has a 14 day quarantine with testing required to protect themselves from COVID-19, relevant to the area visited. They also have trackers paid for from the CARES Funds to monitor people arriving and departing the island at the ferry, planes, and the main breakwaters. They have smaller boat launches blocked off with large boulders. <http://www.metlakatla.com/blogs/mic-pandemic-travel-mitigation-re-opening-plan/>

Bethel is offering to pay travelers accommodation, meals, transport to/from the airport and testing for travelers to quarantine in hotels during their layover.

In 1918 Shishmaref created a guarded blockade at its entry point a distance from town and only allowed people to come within hailing distance. This stopped the spread of the deadly Spanish Flu into their community and all those north of them.

Two days ago, a small cruise ship had to return to Juneau due to COVID-19 on board.

Two days ago, two people returning from Metlakatla from medical in Anchorage had to stay in Juneau due to the escort testing positive for the virus.

Since the communities of Ketchikan, Metlakatla and Prince of Wales all share the Ketchikan airport and hospital it would make sense for those areas to be in cooperation with each other.

With Ketchikan schools planning on opening at full capacity soon, unlike Juneau and Anchorage with distance-learning, it is imperative we stop hoping we stay lucky and get proactive in doing something to protect ourselves. The 14 day quarantine of all travelers has been proven to do that. As mentioned previously, Western Australia has celebrated 100+ days with no cases in their general population, only those travelers in the 14 day quarantine (in self-quarantine in an appropriate premises or in a hotel).

Ketchikan wouldn't need to be spending \$2.5 million on testing because with COVID-19 eliminated from our community the need for testing everyone, often, would be less. We wouldn't be constantly fearing an outbreak, or superspreader event, that could overwhelm our very limited resources and we wouldn't be risking crippling shutdowns to our economy, as Anchorage is facing right now.

Please remember the incubation period for COVID-19 is up to 14 days so one negative test isn't enough. The traveler could get tested in the first few days of exposure and not have a high enough viral load to test positive plus there is that 72 hours to get exposed before arrival in Ketchikan. A second negative test in that 14 days with quarantine is needed. The sooner an arriving traveler in quarantine is tested the sooner contact tracing can begin if they test positive and the quarantine reduces the risk of cheaters. Ketchikan doesn't have the authority to impose travel restriction as per the municipal attorney so a travel mandate from the state is needed.

Trying to flatten the curve isn't working but 14 day quarantine with strict enforcement has been proven to work. Please pass a similar resolution, to go to Governor Dunleavy, in your communities so Ketchikan and others lacking the authority to enact a quarantine travel mandate can get protected from this debilitating virus. Thank you.

Sincerely,

Bev Davies
Ketchikan
907-225-2747
907-617-7207



CITY OF CRAIG

Account Statement - Period Ending June 30, 2020



ALASKA PERMANENT
CAPITAL MANAGEMENT
Registered Investment Adviser

ACCOUNT ACTIVITY

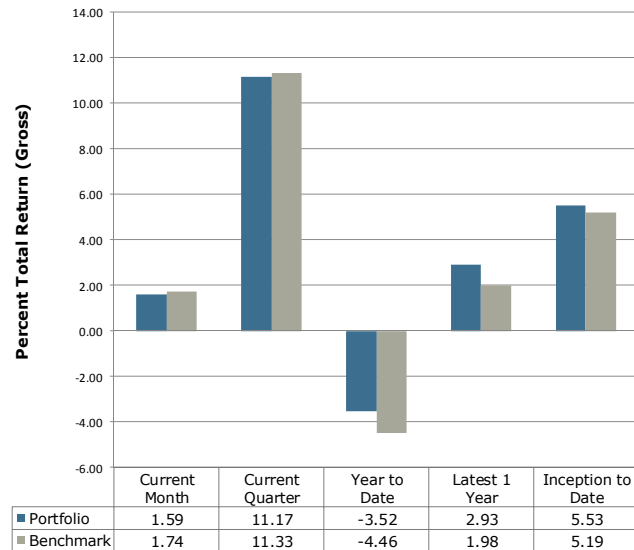
| | |
|-----------------------------|------------|
| Portfolio Value on 05-31-20 | 12,759,010 |
| Contributions | 0 |
| Withdrawals | -248,215 |
| Change in Market Value | 142,194 |
| Interest | 6,060 |
| Dividends | 51,890 |
| Portfolio Value on 06-30-20 | 12,710,940 |

MANAGEMENT TEAM

| | |
|------------------------------|--|
| Client Relationship Manager: | Amber Frizzell, AIF® Amber@apcm.net |
| Your Portfolio Manager: | Bill Lierman, CFA® |
| Contact Phone Number: | 907/272 -7575 |

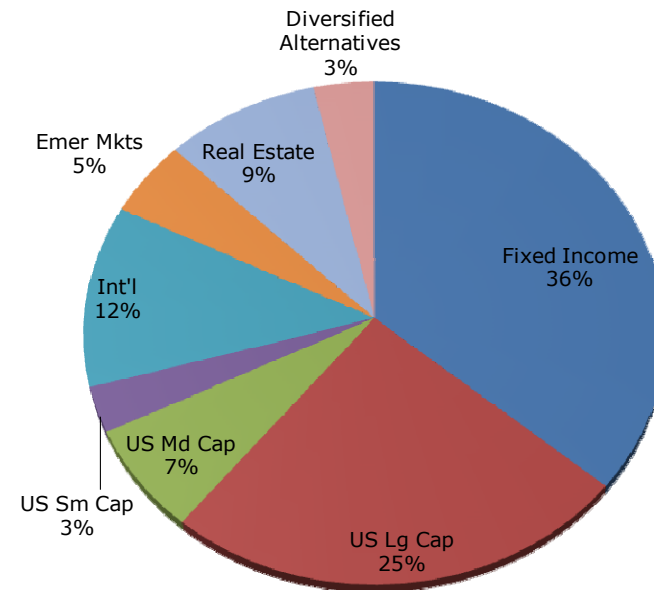
INVESTMENT PERFORMANCE

Current Account Benchmark:
Equity Blend



Performance is Annualized for Periods Greater than One Year

PORTFOLIO COMPOSITION



Clients are encouraged to compare this report with the official statement from their custodian.

Alaska Permanent Capital Management Co.
PORTFOLIO SUMMARY AND TARGET
CITY OF CRAIG
June 30, 2020

| Asset Class & Target | Market Value | % Assets | Range |
|--|-------------------|-------------|------------|
| FIXED INCOME (34%) | | | |
| US Fixed Income (34.0%) | 4,531,926 | 35.7 | 20% to 45% |
| Cash (0.0%) | 66,857 | 0.5 | na |
| Subtotal: | 4,598,782 | 36.2 | |
| EQUITY (51%) | | | |
| US Large Cap (24.0%) | 3,132,938 | 24.6 | 15% to 35% |
| US Mid Cap (7.0%) | 869,540 | 6.8 | 2% to 12% |
| US Small Cap (3.0%) | 372,863 | 2.9 | 0% to 6% |
| Developed International Equity (12.0%) | 1,486,303 | 11.7 | 7% to 17% |
| Emerging Markets (5.0%) | 630,700 | 5.0 | 0% to 10% |
| Subtotal: | 6,492,343 | 51.1 | |
| ALTERNATIVE INVESTMENTS (15%) | | | |
| Real Estate (5.0%) | 550,668 | 4.3 | 0% to 10% |
| Infrastructure (5.0%) | 615,425 | 4.8 | na |
| Commodities (5.0%) | 453,722 | 3.6 | na |
| Subtotal: | 1,619,814 | 12.7 | |
| TOTAL PORTFOLIO | 12,710,940 | 100 | |



Alaska Permanent Capital Management Co.
PORTFOLIO APPRAISAL
CITY OF CRAIG
June 30, 2020

| Quantity | Security | Average Cost | Total Average Cost | Price | Market Value | Pct. Assets | Annual Income | Accrued Interest | Yield to Maturity |
|--|--|--------------|--------------------|--------|--------------|-------------|---------------|------------------|-------------------|
| FNMA & FHLMC | | | | | | | | | |
| 2,802 | FHLMC POOL G14203 4.000% Due 04-01-26 Accrued Interest | 104.56 | 2,930 | 106.01 | 2,971 | 0.02 | 112 | 9 | 0.57 |
| | | | | | 9 | 0.00 | | | |
| | | | 2,930 | | 2,980 | 0.02 | | 9 | |
| CORPORATE BONDS | | | | | | | | | |
| 50,000 | AMERICAN EXPRESS CREDIT 2.250% Due 05-05-21 | 99.92 | 49,962 | 101.37 | 50,687 | 0.40 | 1,125 | 175 | 0.62 |
| 50,000 | GILEAD SCIENCES INC 1.950% Due 03-01-22 | 96.28 | 48,141 | 102.53 | 51,265 | 0.40 | 975 | 325 | 0.43 |
| 50,000 | UNITEDHEALTH GROUP INC 2.875% Due 03-15-22 | 102.56 | 51,279 | 103.51 | 51,753 | 0.41 | 1,437 | 423 | 0.80 |
| 50,000 | COMCAST CORP 2.850% Due 01-15-23 | 101.83 | 50,917 | 106.89 | 53,444 | 0.42 | 1,425 | 657 | 0.13 |
| 50,000 | AFLAC INC 3.625% Due 06-15-23 | 106.03 | 53,016 | 109.36 | 54,678 | 0.43 | 1,812 | 81 | 0.44 |
| 50,000 | BANK OF NEW YORK MELLON 2.200% Due 08-16-23 | 97.83 | 48,916 | 104.53 | 52,265 | 0.41 | 1,100 | 412 | 0.73 |
| 50,000 | JPMORGAN CHASE & CO 3.875% Due 02-01-24 | 105.18 | 52,590 | 110.87 | 55,436 | 0.44 | 1,937 | 807 | 0.79 |
| 50,000 | METLIFE INC 3.600% Due 04-10-24 | 105.46 | 52,732 | 110.89 | 55,445 | 0.44 | 1,800 | 405 | 0.68 |
| 50,000 | WELLS FARGO & COMPANY 3.300% Due 09-09-24 | 99.88 | 49,941 | 109.55 | 54,777 | 0.43 | 1,650 | 513 | 0.97 |
| 50,000 | APPLIED MATERIALS INC 3.900% Due 10-01-25 | 107.96 | 53,978 | 115.14 | 57,571 | 0.45 | 1,950 | 487 | 0.94 |
| 50,000 | TARGET CORP 2.500% Due 04-15-26 | 96.45 | 48,223 | 109.80 | 54,898 | 0.43 | 1,250 | 264 | 0.77 |
| 25,000 | INTEL CORP 2.450% Due 11-15-29 Accrued Interest | 105.68 | 26,420 | 108.09 | 27,024 | 0.21 | 612 | 78 | 1.52 |
| | | | | | 4,629 | 0.04 | | | |
| | | | 586,118 | | 623,873 | 4.91 | | 4,629 | |
| DOMESTIC LARGE CAP EQUITY FUNDS/ETF | | | | | | | | | |
| 10,160 | SPDR S&P 500 ETF | 158.20 | 1,607,342 | 308.36 | 3,132,938 | 24.65 | NA | | |
| DOMESTIC MID CAP EQUITY FUNDS/ETF | | | | | | | | | |
| 4,890 | ISHARES CORE S&P MIDCAP 400 ETF | 133.41 | 652,377 | 177.82 | 869,540 | 6.84 | NA | | |
| DOMESTIC SMALL CAP EQUITY FUNDS/ETF | | | | | | | | | |
| 5,460 | ISHARES S&P SMALLCAP 600 INDEX ETF | 67.12 | 366,475 | 68.29 | 372,863 | 2.93 | NA | | |
| INTERNATIONAL EQUITY FUNDS/ETF | | | | | | | | | |
| 13,000 | ISHARES ETF CORE MSCI EAFE | 57.02 | 741,302 | 57.16 | 743,080 | 5.85 | NA | | |



Alaska Permanent Capital Management Co.
PORTFOLIO APPRAISAL
CITY OF CRAIG
June 30, 2020

| Quantity | Security | Average Cost | Total Average Cost | Price | Market Value | Pct. Assets | Annual Income | Accrued Interest | Yield to Maturity |
|---|--|--------------|--------------------|--------|--------------|-------------|---------------|------------------|-------------------|
| 12,210 | ISHARES MSCI EAFE INDEX FUND | 61.41 | 749,817 | 60.87 | 743,223 | 5.85 | NA | | |
| | | | 1,491,119 | | 1,486,303 | 11.69 | | | |
| EMERGING MARKET FUNDS/ETF | | | | | | | | | |
| 13,250 | ISHARES ETF CORE MSCI EMERGING MKTS | 45.97 | 609,036 | 47.60 | 630,700 | 4.96 | NA | | |
| REAL ESTATE & INFRASTRUCTURE | | | | | | | | | |
| 12,875 | FLEXSHAR STX GLOBAL BROAD INF ETF | 48.69 | 626,884 | 47.80 | 615,425 | 4.84 | NA | | |
| 7,720 | JPMORGAN BETABUILDERS MSCI US REIT ETF | 76.63 | 591,561 | 71.33 | 550,668 | 4.33 | NA | | |
| | | | 1,218,445 | | 1,166,093 | 9.17 | | | |
| COMMODITIES | | | | | | | | | |
| 11,790 | iSHARES BB ROLL SELECT COMMODITY ETF | 37.57 | 442,950 | 38.48 | 453,722 | 3.57 | NA | | |
| U.S. TREASURY | | | | | | | | | |
| 25,000 | US TREASURY NOTES 1.750% Due 10-31-20 | 99.91 | 24,978 | 100.52 | 25,129 | 0.20 | 437 | 74 | 0.20 |
| 75,000 | US TREASURY NOTES 2.000% Due 10-31-21 | 99.92 | 74,943 | 102.44 | 76,828 | 0.60 | 1,500 | 253 | 0.17 |
| 100,000 | US TREASURY NOTES 1.875% Due 01-31-22 | 100.10 | 100,101 | 102.68 | 102,676 | 0.81 | 1,875 | 783 | 0.18 |
| 350,000 | US TREASURY NOTES 0.375% Due 03-31-22 | 100.30 | 351,067 | 100.36 | 351,258 | 2.76 | 1,312 | 330 | 0.17 |
| 200,000 | US TREASURY NOTES 2.125% Due 06-30-22 | 98.10 | 196,209 | 103.91 | 207,812 | 1.63 | 4,250 | 12 | 0.17 |
| 100,000 | US TREASURY NOTES 1.750% Due 07-15-22 | 99.89 | 99,894 | 103.21 | 103,215 | 0.81 | 1,750 | 808 | 0.17 |
| 150,000 | US TREASURY NOTES 1.625% Due 11-15-22 | 97.79 | 146,686 | 103.44 | 155,157 | 1.22 | 2,437 | 311 | 0.17 |
| 80,000 | US TREASURY NOTES 2.625% Due 02-28-23 | 99.73 | 79,783 | 106.51 | 85,210 | 0.67 | 2,100 | 702 | 0.18 |
| 165,000 | US TREASURY NOTES 0.250% Due 04-15-23 | 99.96 | 164,941 | 100.21 | 165,348 | 1.30 | 412 | 87 | 0.17 |
| 125,000 | US TREASURY NOTES 2.500% Due 08-15-23 | 98.87 | 123,590 | 107.21 | 134,019 | 1.05 | 3,125 | 1,176 | 0.18 |
| 170,000 | US TREASURY NOTES 1.375% Due 08-31-23 | 99.92 | 169,867 | 103.77 | 176,409 | 1.39 | 2,337 | 781 | 0.18 |
| 115,000 | US TREASURY NOTES 2.125% Due 03-31-24 | 98.81 | 113,630 | 107.14 | 123,212 | 0.97 | 2,444 | 618 | 0.21 |
| 100,000 | US TREASURY NOTES 2.375% Due 08-15-24 | 100.23 | 100,227 | 108.80 | 108,797 | 0.86 | 2,375 | 894 | 0.23 |
| 75,000 | US TREASURY NOTES 1.500% Due 09-30-24 | 105.26 | 78,944 | 105.31 | 78,984 | 0.62 | 1,125 | 283 | 0.24 |
| 130,000 | US TREASURY NOTES 2.125% Due 11-30-24 | 102.02 | 132,625 | 108.25 | 140,720 | 1.11 | 2,762 | 234 | 0.25 |



Alaska Permanent Capital Management Co.
PORTFOLIO APPRAISAL
CITY OF CRAIG
June 30, 2020

| Quantity | Security | Average Cost | Total Average Cost | Price | Market Value | Pct. Assets | Annual Income | Accrued Interest | Yield to Maturity |
|-----------------------------|--|--------------|--------------------|--------|-------------------|-------------|---------------|------------------|-------------------|
| 75,000 | US TREASURY NOTES 2.000% Due 02-15-25 | 100.63 | 75,469 | 107.98 | 80,983 | 0.64 | 1,500 | 565 | 0.26 |
| 400,000 | US TREASURY NOTES 0.500% Due 03-31-25 | 100.67 | 402,671 | 101.07 | 404,264 | 3.18 | 2,000 | 503 | 0.27 |
| 80,000 | US TREASURY NOTES 0.375% Due 04-30-25 | 100.32 | 80,256 | 100.45 | 80,362 | 0.63 | 300 | 51 | 0.28 |
| 100,000 | US TREASURY NOTES 2.500% Due 02-28-26 | 100.40 | 100,397 | 111.96 | 111,957 | 0.88 | 2,500 | 836 | 0.37 |
| 60,000 | US TREASURY NOTES 1.625% Due 05-15-26 | 101.05 | 60,633 | 107.17 | 64,301 | 0.51 | 975 | 125 | 0.39 |
| 200,000 | US TREASURY NOTES 2.000% Due 11-15-26 | 98.10 | 196,199 | 109.80 | 219,610 | 1.73 | 4,000 | 511 | 0.44 |
| 145,000 | US TREASURY NOTES 0.625% Due 03-31-27 | 100.84 | 146,214 | 101.01 | 146,467 | 1.15 | 906 | 228 | 0.47 |
| 50,000 | US TREASURY NOTES 0.500% Due 04-30-27 | 100.05 | 50,027 | 100.15 | 50,074 | 0.39 | 250 | 42 | 0.48 |
| 125,000 | US TREASURY NOTES 2.250% Due 11-15-27 | 95.20 | 118,996 | 112.62 | 140,781 | 1.11 | 2,812 | 359 | 0.50 |
| 80,000 | US TREASURY NOTES 3.125% Due 11-15-28 | 102.02 | 81,613 | 120.90 | 96,722 | 0.76 | 2,500 | 319 | 0.57 |
| 125,000 | US TREASURY NOTES 2.625% Due 02-15-29 | 99.82 | 124,774 | 117.18 | 146,475 | 1.15 | 3,281 | 1,235 | 0.58 |
| 50,000 | US TREASURY NOTES 1.625% Due 08-15-29 | 99.35 | 49,673 | 109.11 | 54,556 | 0.43 | 812 | 306 | 0.60 |
| 70,000 | US TREASURY NOTES 1.750% Due 11-15-29 | 99.71 | 69,800 | 110.41 | 77,284 | 0.61 | 1,225 | 156 | 0.61 |
| 130,000 | US TREASURY NOTES 1.500% Due 02-15-30 | 108.44 | 140,978 | 108.10 | 140,533 | 1.11 | 1,950 | 734 | 0.63 |
| | Accrued Interest | | | | 13,313 | 0.10 | | | |
| | | | 3,655,184 | | 3,862,457 | 30.39 | | 13,313 | |
| AGENCIES | | | | | | | | | |
| 40,000 | FHLB 1.625% Due 03-12-27 | 104.31 | 41,722 | 105.88 | 42,354 | 0.33 | 650 | 262 | 0.72 |
| | Accrued Interest | | | | 262 | 0.00 | | | |
| | | | 41,722 | | 42,616 | 0.34 | | 262 | |
| CASH AND EQUIVALENTS | | | | | | | | | |
| | CHARLES SCHWAB LIQUID BANK DEPOSIT ACCOUNT | | 52,976 | | 52,976 | 0.42 | | | |
| | DIVIDEND ACCRUAL | | 13,881 | | 13,881 | 0.11 | | | |
| | | | 66,857 | | 66,857 | 0.53 | | | |
| TOTAL PORTFOLIO | | | 10,740,555 | | 12,710,940 | 100 | 73,093 | 18,212 | |



Alaska Permanent Capital Management Co.
TRANSACTION SUMMARY
CITY OF CRAIG
From 06-01-20 To 06-30-20

| Trade Date | Settle Date | Security | Quantity | Trade Amount |
|-------------------------------------|----------------|--|-------------|---------------------|
| PURCHASES | | | | |
| COMMODITIES | | | | |
| 06-01-20 | 06-03-20 | iSHARES BB ROLL SELECT COMMODITY ETF | 11,890.0000 | 446,707.30 |
| DOMESTIC MID CAP EQUITY FUNDS/ETF | | | | |
| 06-01-20 | 06-03-20 | ISHARES CORE S&P MIDCAP 400 ETF | 1,530.0000 | 273,281.56 |
| DOMESTIC SMALL CAP EQUITY FUNDS/ETF | | | | |
| 06-01-20 | 06-03-20 | ISHARES S&P SMALLCAP 600 INDEX ETF | 5,770.0000 | 387,282.40 |
| EMERGING MARKET FUNDS/ETF | | | | |
| 06-01-20 | 06-03-20 | ISHARES ETF CORE MSCI EMERGING MKTS | 14,125.0000 | 649,255.63 |
| INTERNATIONAL EQUITY FUNDS/ETF | | | | |
| 06-01-20 | 06-03-20 | ISHARES ETF CORE MSCI EAFE | 4,585.0000 | 261,464.21 |
| 06-01-20 | 06-03-20 | ISHARES MSCI EAFE INDEX FUND | 4,310.0000 | 261,660.10 |
| | | | | 523,124.31 |
| REAL ESTATE & INFRASTRUCTURE | | | | |
| 06-01-20 | 06-03-20 | FLEXSHAR STX GLOBAL BROAD INF ETF | 13,210.0000 | 643,194.90 |
| U.S. TREASURY | | | | |
| 06-11-20 | 06-12-20 | US TREASURY NOTES 1.500% Due 09-30-24 | 75,000 | 78,943.64 |
| | | | | 3,001,789.74 |



Alaska Permanent Capital Management Co.
TRANSACTION SUMMARY
CITY OF CRAIG
From 06-01-20 To 06-30-20

| Trade Date | Settle Date | Security | Quantity | Trade Amount |
|-------------------------------------|----------------|--|----------|-----------------|
| DEPOSITS AND EXPENSES | | | | |
| MANAGEMENT FEES | | | | |
| 06-30-20 | 06-30-20 | MANAGEMENT FEES | | 3,177.74 |
| | | | | 3,177.74 |
| DIVIDEND | | | | |
| DOMESTIC LARGE CAP EQUITY FUNDS/ETF | | | | |
| 06-19-20 | 07-31-20 | SPDR S&P 500 ETF | | 13,881.02 |
| DOMESTIC MID CAP EQUITY FUNDS/ETF | | | | |
| 06-19-20 | 06-19-20 | ISHARES CORE S&P MIDCAP 400 ETF | | 3,175.20 |
| DOMESTIC SMALL CAP EQUITY FUNDS/ETF | | | | |
| 06-19-20 | 06-19-20 | ISHARES S&P SMALLCAP 600 INDEX ETF | | 1,282.32 |
| EMERGING MARKET FUNDS/ETF | | | | |
| 06-19-20 | 06-19-20 | ISHARES ETF CORE MSCI EMERGING MKTS | | 5,781.78 |
| INTERNATIONAL EQUITY FUNDS/ETF | | | | |
| 06-19-20 | 06-19-20 | ISHARES MSCI EAFE INDEX FUND | | 10,472.97 |
| 06-19-20 | 06-19-20 | ISHARES ETF CORE MSCI EAFE | | 9,098.90 |
| | | | | <hr/> 19,571.87 |
| REAL ESTATE & INFRASTRUCTURE | | | | |
| 06-25-20 | 06-25-20 | FLEXSHAR STX GLOBAL BROAD INF ETF | | 3,337.83 |



Alaska Permanent Capital Management Co.
TRANSACTION SUMMARY
CITY OF CRAIG
From 06-01-20 To 06-30-20

| Trade Date | Settle Date | Security | Quantity | Trade Amount |
|---------------------------|----------------|--|----------|------------------|
| 06-26-20 | 06-26-20 | JPMORGAN BETABUILDERS MSCI US REIT ETF | | 4,860.20 |
| | | | | 8,198.03 |
| | | | | 51,890.22 |
| INTEREST | | | | |
| CASH AND EQUIVALENTS | | | | |
| 06-15-20 | 06-15-20 | CHARLES SCHWAB LIQUID BANK DEPOSIT ACCOUNT | | 0.19 |
| CORPORATE BONDS | | | | |
| 06-15-20 | 06-15-20 | AFLAC INC 3.625% Due 06-15-23 | | 906.25 |
| FNMA & FHLMC | | | | |
| 06-15-20 | 06-15-20 | FHLMC POOL G14203 4.000% Due 04-01-26 | | 9.70 |
| U.S. TREASURY | | | | |
| 06-30-20 | 06-30-20 | US TREASURY NOTES 2.125% Due 06-30-22 | | 2,125.00 |
| | | | | 3,041.14 |
| PRINCIPAL PAYDOWNS | | | | |
| FNMA & FHLMC | | | | |
| 06-15-20 | 06-15-20 | FHLMC POOL G14203 4.000% Due 04-01-26 | 108.49 | 108.49 |
| | | | | 108.49 |



Alaska Permanent Capital Management Co.
TRANSACTION SUMMARY
CITY OF CRAIG
From 06-01-20 To 06-30-20

| Trade Date | Settle Date | Security | Quantity | Trade Amount |
|-------------------------------------|----------------|--|------------|-----------------|
| PURCHASED ACCRUED INTEREST | | | | |
| U.S. TREASURY | | | | |
| 06-11-20 | 06-12-20 | US TREASURY NOTES 1.500% Due 09-30-24 | | 224.39 |
| | | | | 224.39 |
| SALES, MATURITIES, AND CALLS | | | | |
| COMMODITIES | | | | |
| 06-10-20 | 06-12-20 | iSHARES BB ROLL SELECT COMMODITY ETF | 100.0000 | 3,829.42 |
| DOMESTIC LARGE CAP EQUITY FUNDS/ETF | | | | |
| 06-01-20 | 06-03-20 | SPDR S&P 500 ETF | 4,320.0000 | 1,320,983.61 |
| 06-10-20 | 06-12-20 | SPDR S&P 500 ETF | 290.0000 | 92,701.64 |
| | | | | 1,413,685.25 |
| DOMESTIC MID CAP EQUITY FUNDS/ETF | | | | |
| 06-10-20 | 06-12-20 | ISHARES CORE S&P MIDCAP 400 ETF | 165.0000 | 30,743.77 |
| DOMESTIC SMALL CAP EQUITY FUNDS/ETF | | | | |
| 06-10-20 | 06-12-20 | ISHARES S&P SMALLCAP 600 INDEX ETF | 310.0000 | 22,130.69 |
| EMERGING MARKET FUNDS/ETF | | | | |
| 06-10-20 | 06-12-20 | ISHARES ETF CORE MSCI EMERGING MKTS | 875.0000 | 42,752.09 |
| INTERNATIONAL EQUITY FUNDS/ETF | | | | |
| 06-10-20 | 06-12-20 | ISHARES ETF CORE MSCI EAFE | 625.0000 | 37,374.17 |
| 06-10-20 | 06-12-20 | ISHARES MSCI EAFE INDEX FUND | 590.0000 | 37,585.00 |
| | | | | 74,959.17 |



Alaska Permanent Capital Management Co.
TRANSACTION SUMMARY
CITY OF CRAIG
From 06-01-20 To 06-30-20

| Trade Date | Settle Date | Security | Quantity | Trade Amount |
|---|----------------|--|------------|---------------------|
| REAL ESTATE & INFRASTRUCTURE | | | | |
| 06-01-20 | 06-03-20 | JPMORGAN BETABUILDERS MSCI US REIT ETF | 4,825.0000 | 346,523.84 |
| 06-10-20 | 06-12-20 | FLEXSHAR STX GLOBAL BROAD INF ETF | 335.0000 | 16,823.33 |
| 06-10-20 | 06-12-20 | JPMORGAN BETABUILDERS MSCI US REIT ETF | 480.0000 | 36,308.85 |
| | | | | 399,656.02 |
| TREASURY BILLS | | | | |
| 06-01-20 | 06-02-20 | US TREASURY BILLS 0.000% Due 04-22-21 | 240,000 | 239,611.20 |
| U.S. TREASURY | | | | |
| 06-02-20 | 06-03-20 | US TREASURY NOTES 2.625% Due 12-15-21 | 175,000 | 181,533.86 |
| 06-02-20 | 06-03-20 | US TREASURY NOTES 2.125% Due 08-15-21 | 150,000 | 153,477.30 |
| 06-02-20 | 06-03-20 | US TREASURY NOTES 2.000% Due 08-15-25 | 175,000 | 189,791.76 |
| 06-02-20 | 06-03-20 | US TREASURY NOTES 0.625% Due 03-31-27 | 125,000 | 126,005.63 |
| 06-02-20 | 06-03-20 | US TREASURY NOTES 0.250% Due 04-15-23 | 250,000 | 250,356.25 |
| 06-02-20 | 06-03-20 | US TREASURY NOTES 2.000% Due 11-15-21 | 100,000 | 102,637.40 |
| | | | | 1,003,802.20 |
| | | | | 3,231,169.81 |

SOLD ACCRUED INTEREST

| | | | | |
|----------------------|----------|--|--|----------|
| U.S. TREASURY | | | | |
| 06-02-20 | 06-03-20 | US TREASURY NOTES 2.625% Due 12-15-21 | | 2,146.26 |



Alaska Permanent Capital Management Co.
TRANSACTION SUMMARY
CITY OF CRAIG
From 06-01-20 To 06-30-20

| Trade Date | Settle Date | Security | Quantity | Trade Amount |
|---------------|----------------|--|----------|-----------------|
| 06-02-20 | 06-03-20 | US TREASURY NOTES 2.125% Due 08-15-21 | | 954.50 |
| 06-02-20 | 06-03-20 | US TREASURY NOTES 2.000% Due 08-15-25 | | 1,048.08 |
| 06-02-20 | 06-03-20 | US TREASURY NOTES 0.625% Due 03-31-27 | | 136.61 |
| 06-02-20 | 06-03-20 | US TREASURY NOTES 0.250% Due 04-15-23 | | 83.67 |
| 06-02-20 | 06-03-20 | US TREASURY NOTES 2.000% Due 11-15-21 | | 103.26 |
| | | | | 4,472.38 |
| | | | | 4,472.38 |

WITHDRAW

CASH AND EQUIVALENTS

| | | | | |
|----------|----------|--|--|-------------------|
| 06-01-20 | 06-01-20 | CASH RECEIVABLE | | 1,381.25 |
| 06-12-20 | 06-12-20 | CHARLES SCHWAB LIQUID BANK DEPOSIT ACCOUNT | | 245,000.00 |
| 06-12-20 | 06-12-20 | CHARLES SCHWAB LIQUID BANK DEPOSIT ACCOUNT | | 25.00 |
| 06-16-20 | 06-16-20 | CHARLES SCHWAB LIQUID BANK DEPOSIT ACCOUNT | | 3,189.75 |
| | | | | 249,596.00 |
| | | | | 249,596.00 |



Alaska Permanent Capital Management Co.
REALIZED GAINS AND LOSSES
CITY OF CRAIG
From 06-01-20 Through 06-30-20

| Date | Quantity | Security | Avg. Cost Basis | Proceeds | Gain Or Loss |
|-------------|-----------------|--|------------------------|-----------------|---------------------|
| 06-01-20 | 240,000 | US TREASURY BILLS 0.000% Due 04-22-21 | 239,683.31 | 239,611.20 | -72.11 |
| 06-01-20 | 4,320.0000 | SPDR S&P 500 ETF | 683,436.64 | 1,320,983.61 | 637,546.97 |
| 06-01-20 | 4,825.0000 | JPMORGAN BETABUILDERS MSCI US REIT ETF | 369,725.61 | 346,523.84 | -23,201.77 |
| 06-02-20 | 175,000 | US TREASURY NOTES 2.625% Due 12-15-21 | 178,364.49 | 181,533.86 | 3,169.37 |
| 06-02-20 | 150,000 | US TREASURY NOTES 2.125% Due 08-15-21 | 149,169.49 | 153,477.30 | 4,307.81 |
| 06-02-20 | 175,000 | US TREASURY NOTES 2.000% Due 08-15-25 | 172,301.09 | 189,791.76 | 17,490.67 |
| 06-02-20 | 125,000 | US TREASURY NOTES 0.625% Due 03-31-27 | 126,046.94 | 126,005.63 | -41.31 |
| 06-02-20 | 250,000 | US TREASURY NOTES 0.250% Due 04-15-23 | 249,911.28 | 250,356.25 | 444.97 |
| 06-02-20 | 100,000 | US TREASURY NOTES 2.000% Due 11-15-21 | 99,761.72 | 102,637.40 | 2,875.68 |
| 06-10-20 | 165.0000 | ISHARES CORE S&P MIDCAP 400 ETF | 22,012.73 | 30,743.77 | 8,731.04 |
| 06-10-20 | 290.0000 | SPDR S&P 500 ETF | 45,878.85 | 92,701.64 | 46,822.79 |
| 06-10-20 | 875.0000 | ISHARES ETF CORE MSCI EMERGING MKTS | 40,219.38 | 42,752.09 | 2,532.71 |
| 06-10-20 | 625.0000 | ISHARES ETF CORE MSCI EAFE | 35,639.52 | 37,374.17 | 1,734.65 |
| 06-10-20 | 590.0000 | ISHARES MSCI EAFE INDEX FUND | 36,231.93 | 37,585.00 | 1,353.07 |
| 06-10-20 | 100.0000 | iSHARES BB ROLL SELECT COMMODITY ETF | 3,757.00 | 3,829.42 | 72.42 |
| 06-10-20 | 335.0000 | FLEXSHAR STX GLOBAL BROAD INF ETF | 16,311.15 | 16,823.33 | 512.18 |
| 06-10-20 | 480.0000 | JPMORGAN BETABUILDERS MSCI US REIT ETF | 36,780.99 | 36,308.85 | -472.14 |



Alaska Permanent Capital Management Co.
REALIZED GAINS AND LOSSES
CITY OF CRAIG
From 06-01-20 Through 06-30-20

| Date | Quantity | Security | Avg. Cost Basis | Proceeds | Gain Or Loss |
|--------------|-----------------|--|------------------------|---------------------|---------------------|
| 06-10-20 | 310.0000 | ISHARES S&P SMALLCAP 600 INDEX ETF | 20,807.20 | 22,130.69 | 1,323.49 |
| 06-15-20 | 108.49 | FHLMC POOL G14203 4.000% Due 04-01-26 | 113.44 | 108.49 | -4.95 |
| TOTAL GAINS | | | | | 728,917.84 |
| TOTAL LOSSES | | | | | -23,792.29 |
| | | | 2,526,152.75 | 3,231,278.30 | 705,125.55 |



Alaska Permanent Capital Management Co.

CASH LEDGER

CITY OF CRAIG

From 06-01-20 To 06-30-20

| Trade Date | Settle Date | Tran Code | Activity | Security | Amount |
|---|--------------------|------------------|-----------------------|--|---------------|
| CASH RECEIVABLE | | | | | |
| 06-01-20 | | | Beginning Balance | | 1,381.25 |
| 06-01-20 | 06-01-20 | wd | Transfer to | CHARLES SCHWAB LIQUID BANK DEPOSIT ACCOUNT | -1,381.25 |
| 06-30-20 | | | Ending Balance | | 0.00 |
| CHARLES SCHWAB LIQUID BANK DEPOSIT ACCOUNT | | | | | |
| 06-01-20 | | | Beginning Balance | | 25,022.24 |
| 06-01-20 | 06-03-20 | wd | Purchase | ISHARES ETF CORE MSCI EMERGING MKTS | -649,255.63 |
| 06-01-20 | 06-03-20 | wd | Purchase | ISHARES ETF CORE MSCI EAFE | -261,464.21 |
| 06-01-20 | 06-03-20 | wd | Purchase | ISHARES MSCI EAFE INDEX FUND | -261,660.10 |
| 06-01-20 | 06-03-20 | wd | Purchase | ISHARES S&P SMALLCAP 600 INDEX ETF | -387,282.40 |
| 06-01-20 | 06-03-20 | wd | Purchase | iSHARES BB ROLL SELECT COMMODITY ETF | -446,707.30 |
| 06-01-20 | 06-03-20 | wd | Purchase | ISHARES CORE S&P MIDCAP 400 ETF | -273,281.56 |
| 06-01-20 | 06-03-20 | wd | Purchase | FLEXSHAR STX GLOBAL BROAD INF ETF | -643,194.90 |
| 06-01-20 | 06-02-20 | dp | Sale | US TREASURY BILLS 0.000% Due 04-22-21 | 239,611.20 |
| 06-01-20 | 06-03-20 | dp | Sale | SPDR S&P 500 ETF | 1,320,983.61 |
| 06-01-20 | 06-03-20 | dp | Sale | JPMORGAN BETABUILDERS MSCI US REIT ETF | 346,523.84 |
| 06-01-20 | 06-01-20 | dp | Transfer from | CASH RECEIVABLE | 1,381.25 |
| 06-02-20 | 06-03-20 | dp | Sale | US TREASURY NOTES 2.625% Due 12-15-21 | 181,533.86 |



Alaska Permanent Capital Management Co.

CASH LEDGER***CITY OF CRAIG****From 06-01-20 To 06-30-20*

| Trade Date | Settle Date | Tran Code | Activity | Security | Amount |
|-------------------|--------------------|------------------|------------------|--|---------------|
| 06-02-20 | 06-03-20 | dp | Accrued Interest | US TREASURY NOTES 2.625% Due 12-15-21 | 2,146.26 |
| 06-02-20 | 06-03-20 | dp | Sale | US TREASURY NOTES 2.125% Due 08-15-21 | 153,477.30 |
| 06-02-20 | 06-03-20 | dp | Accrued Interest | US TREASURY NOTES 2.125% Due 08-15-21 | 954.50 |
| 06-02-20 | 06-03-20 | dp | Sale | US TREASURY NOTES 2.000% Due 08-15-25 | 189,791.76 |
| 06-02-20 | 06-03-20 | dp | Accrued Interest | US TREASURY NOTES 2.000% Due 08-15-25 | 1,048.08 |
| 06-02-20 | 06-03-20 | dp | Sale | US TREASURY NOTES 0.625% Due 03-31-27 | 126,005.63 |
| 06-02-20 | 06-03-20 | dp | Accrued Interest | US TREASURY NOTES 0.625% Due 03-31-27 | 136.61 |
| 06-02-20 | 06-03-20 | dp | Sale | US TREASURY NOTES 0.250% Due 04-15-23 | 250,356.25 |
| 06-02-20 | 06-03-20 | dp | Accrued Interest | US TREASURY NOTES 0.250% Due 04-15-23 | 83.67 |
| 06-02-20 | 06-03-20 | dp | Sale | US TREASURY NOTES 2.000% Due 11-15-21 | 102,637.40 |
| 06-02-20 | 06-03-20 | dp | Accrued Interest | US TREASURY NOTES 2.000% Due 11-15-21 | 103.26 |
| 06-10-20 | 06-12-20 | dp | Sale | ISHARES CORE S&P MIDCAP 400 ETF | 30,743.77 |
| 06-10-20 | 06-12-20 | dp | Sale | SPDR S&P 500 ETF | 92,701.64 |
| 06-10-20 | 06-12-20 | dp | Sale | ISHARES ETF CORE MSCI EMERGING MKTS | 42,752.09 |
| 06-10-20 | 06-12-20 | dp | Sale | ISHARES ETF CORE MSCI EAFE | 37,374.17 |
| 06-10-20 | 06-12-20 | dp | Sale | ISHARES MSCI EAFE INDEX FUND | 37,585.00 |



Alaska Permanent Capital Management Co.

CASH LEDGER

CITY OF CRAIG

From 06-01-20 To 06-30-20

| Trade Date | Settle Date | Tran Code | Activity | Security | Amount |
|-------------------|--------------------|------------------|------------------|---|---------------|
| 06-10-20 | 06-12-20 | dp | Sale | iSHARES BB ROLL SELECT COMMODITY ETF | 3,829.42 |
| 06-10-20 | 06-12-20 | dp | Sale | FLEXSHAR STX GLOBAL BROAD INF ETF | 16,823.33 |
| 06-10-20 | 06-12-20 | dp | Sale | JPMORGAN BETABUILDERS MSCI US REIT ETF | 36,308.85 |
| 06-10-20 | 06-12-20 | dp | Sale | ISHARES S&P SMALLCAP 600 INDEX ETF | 22,130.69 |
| 06-11-20 | 06-12-20 | wd | Purchase | US TREASURY NOTES 1.500% Due 09-30-24 | -78,943.64 |
| 06-11-20 | 06-12-20 | wd | Accrued Interest | US TREASURY NOTES 1.500% Due 09-30-24 | -224.39 |
| 06-12-20 | 06-12-20 | wd | Withdrawal | from Portfolio | -245,000.00 |
| 06-12-20 | 06-12-20 | wd | Withdrawal | from Portfolio | -25.00 |
| 06-15-20 | 06-15-20 | dp | Interest | AFLAC INC 3.625% Due 06-15-23 | 906.25 |
| 06-15-20 | 06-15-20 | dp | Interest | FHLMC POOL G14203 4.000% Due 04-01-26 | 9.70 |
| 06-15-20 | 06-15-20 | dp | Paydown | FHLMC POOL G14203 4.000% Due 04-01-26 | 108.49 |
| 06-15-20 | 06-15-20 | dp | Interest | CHARLES SCHWAB LIQUID BANK DEPOSIT ACCOUNT | 0.19 |
| 06-16-20 | 06-16-20 | wd | Withdrawal | from Portfolio | -3,189.75 |
| 06-19-20 | 06-19-20 | dp | Dividend | ISHARES MSCI EAFE INDEX FUND | 10,472.97 |
| 06-19-20 | 06-19-20 | dp | Dividend | ISHARES ETF CORE MSCI EAFE | 9,098.90 |
| 06-19-20 | 06-19-20 | dp | Dividend | ISHARES ETF CORE MSCI EMERGING MKTS | 5,781.78 |
| 06-19-20 | 06-19-20 | dp | Dividend | ISHARES CORE S&P MIDCAP 400 ETF | 3,175.20 |



Alaska Permanent Capital Management Co.

CASH LEDGER

CITY OF CRAIG

From 06-01-20 To 06-30-20

| Trade Date | Settle Date | Tran Code | Activity | Security | Amount |
|-------------------------|--------------------|------------------|-----------------------|--|------------------|
| 06-19-20 | 06-19-20 | dp | Dividend | ISHARES S&P SMALLCAP 600 INDEX ETF | 1,282.32 |
| 06-25-20 | 06-25-20 | dp | Dividend | FLEXSHAR STX GLOBAL BROAD INF ETF | 3,337.83 |
| 06-26-20 | 06-26-20 | dp | Dividend | JPMORGAN BETABUILDERS MSCI US REIT ETF | 4,860.20 |
| 06-30-20 | 06-30-20 | dp | Interest | US TREASURY NOTES 2.125% Due 06-30-22 | 2,125.00 |
| 06-30-20 | | | Ending Balance | | 52,975.63 |
| DIVIDEND ACCRUAL | | | | | |
| 06-01-20 | | | Beginning Balance | | 0.00 |
| 06-19-20 | 07-31-20 | dp | Dividend | SPDR S&P 500 ETF | 13,881.02 |
| 06-30-20 | | | Ending Balance | | 13,881.02 |



CITY OF CRAIG - SCHOOL FUNDS

Account Statement - Period Ending June 30, 2020



ALASKA PERMANENT
CAPITAL MANAGEMENT
Registered Investment Adviser

ACCOUNT ACTIVITY

| | |
|-----------------------------|-----------|
| Portfolio Value on 05-31-20 | 3,356,525 |
| Contributions | 0 |
| Withdrawals | -250,025 |
| Change in Market Value | -1,081 |
| Interest | 1,458 |
| Dividends | 0 |
| Portfolio Value on 06-30-20 | 3,106,877 |

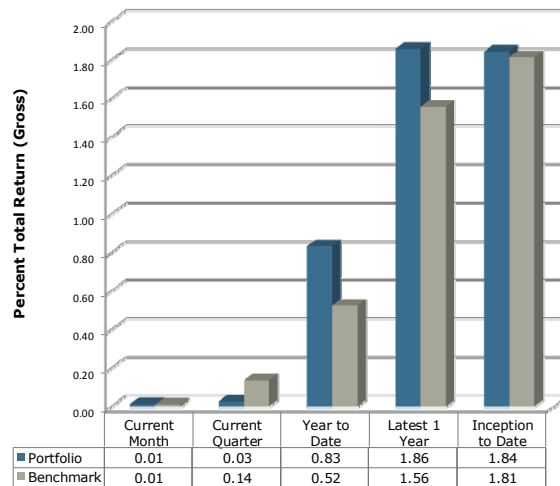
MANAGEMENT TEAM

| | |
|------------------------------|--|
| Client Relationship Manager: | Amber Frizzell, AIF® Amber@apcm.net |
| Your Portfolio Manager: | Bill Llerman, CFA® |
| Contact Phone Number: | 907/272-7575 |

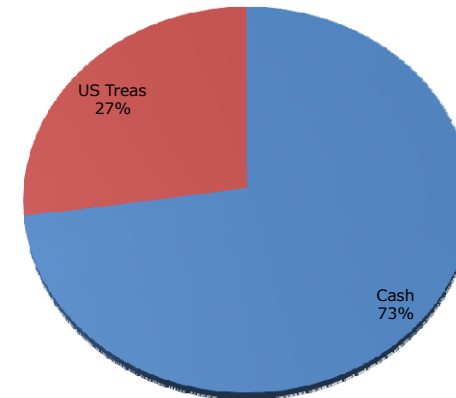
PORTFOLIO COMPOSITION

INVESTMENT PERFORMANCE

Current Account Benchmark:
T-Bill shown for reference



Performance is Annualized for Periods Greater than One Year



Fixed Income Portfolio Statistics

Average Quality: AAA Yield to Maturity: 0.14% Average Maturity: 0.10 Yrs



Alaska Permanent Capital Management Co.
PORTFOLIO APPRAISAL
CITY OF CRAIG - SCHOOL FUNDS
June 30, 2020

| Quantity | Security | Average Cost | Total Average Cost | Price | Market Value | Pct. Assets | Annual Income | Accrued Interest | Yield to Maturity |
|-----------------------------|--|-----------------|-----------------------|--------|------------------|----------------|------------------|---------------------|-------------------------|
| U.S. TREASURY | | | | | | | | | |
| 340,000 | US TREASURY NOTES 1.500% Due 08-15-20 | 99.63 | 338,740 | 100.16 | 340,554 | 10.96 | 5,100 | 1,920 | 0.21 |
| 500,000 | US TREASURY NOTES 1.750% Due 11-15-20 Accrued Interest | 100.11 | 500,561 | 100.57 | 502,870 | 16.19 | 8,750 | 1,118 | 0.22 |
| | | | 839,301 | | 846,461 | 27.24 | | 3,037 | |
| TREASURY BILLS | | | | | | | | | |
| 195,000 | US TREASURY BILLS 0.000% Due 07-16-20 | 99.65 | 194,314 | 99.99 | 194,989 | 6.28 | NA | 0 | 0.12 |
| 560,000 | US TREASURY BILLS 0.000% Due 07-30-20 | 99.25 | 555,777 | 99.99 | 559,941 | 18.02 | NA | 0 | 0.13 |
| 435,000 | US TREASURY BILLS 0.000% Due 09-24-20 | 99.96 | 434,805 | 99.97 | 434,852 | 14.00 | NA | 0 | 0.14 |
| 490,000 | US TREASURY BILLS 0.000% Due 10-15-20 | 99.92 | 489,605 | 99.95 | 489,775 | 15.76 | NA | 0 | 0.16 |
| 570,000 | US TREASURY BILLS 0.000% Due 12-17-20 | 99.92 | 569,572 | 99.93 | 569,599 | 18.33 | NA | 0 | 0.15 |
| | | | 2,244,073 | | 2,249,156 | 72.39 | | 0 | |
| CASH AND EQUIVALENTS | | | | | | | | | |
| | CHARLES SCHWAB LIQUID BANK DEPOSIT ACCOUNT | | 11,259 | | 11,259 | 0.36 | | | |
| TOTAL PORTFOLIO | | | 3,094,634 | | 3,106,877 | 100 | 13,850 | 3,037 | |



Alaska Permanent Capital Management Co.
TRANSACTION SUMMARY
CITY OF CRAIG - SCHOOL FUNDS
From 06-01-20 To 06-30-20

| Trade Date | Settle Date | Security | Quantity | Trade Amount |
|-------------------------------------|----------------|--|----------|---------------------|
| PURCHASES | | | | |
| TREASURY BILLS | | | | |
| 06-01-20 | 06-02-20 | US TREASURY BILLS 0.000% Due 09-24-20 | 435,000 | 434,804.89 |
| 06-24-20 | 06-25-20 | US TREASURY BILLS 0.000% Due 12-17-20 | 570,000 | 569,571.54 |
| | | | | 1,004,376.43 |
| | | | | 1,004,376.43 |
| INTEREST | | | | |
| CASH AND EQUIVALENTS | | | | |
| 06-15-20 | 06-15-20 | CHARLES SCHWAB LIQUID BANK DEPOSIT ACCOUNT | | 0.38 |
| U.S. TREASURY | | | | |
| 06-15-20 | 06-15-20 | US TREASURY NOTE 1.500% Due 06-15-20 | | 4,237.50 |
| | | | | 4,237.88 |
| SALES, MATURITIES, AND CALLS | | | | |
| TREASURY BILLS | | | | |
| 06-11-20 | 06-12-20 | US TREASURY BILLS 0.000% Due 07-16-20 | 250,000 | 249,969.31 |
| U.S. TREASURY | | | | |
| 06-15-20 | 06-15-20 | US TREASURY NOTE 1.500% Due 06-15-20 | 565,000 | 565,000.00 |
| | | | | 814,969.31 |
| WITHDRAW | | | | |
| CASH AND EQUIVALENTS | | | | |
| 06-12-20 | 06-12-20 | CHARLES SCHWAB LIQUID BANK DEPOSIT ACCOUNT | | 250,000.00 |



Alaska Permanent Capital Management Co.
TRANSACTION SUMMARY
CITY OF CRAIG - SCHOOL FUNDS
From 06-01-20 To 06-30-20

| Trade Date | Settle Date | Security | Quantity | Trade Amount |
|-----------------------|------------------------|--|-----------------|-------------------------|
| 06-12-20 | 06-12-20 | CHARLES SCHWAB LIQUID BANK DEPOSIT ACCOUNT | | 25.00 |
| | | | | 250,025.00 |
| | | | | 250,025.00 |



Alaska Permanent Capital Management Co.
REALIZED GAINS AND LOSSES
CITY OF CRAIG - SCHOOL FUNDS
From 06-01-20 Through 06-30-20

| Date | Quantity | Security | Avg. Cost Basis | Proceeds | Gain Or Loss |
|--------------|-----------------|--|----------------------------|-------------------|---------------------|
| 06-11-20 | 250,000 | US TREASURY BILLS 0.000% Due 07-16-20 | 249,120.92 | 249,969.31 | 848.39 |
| 06-15-20 | 565,000 | US TREASURY NOTE 1.500% Due 06-15-20 | 564,794.08 | 565,000.00 | 205.92 |
| TOTAL GAINS | | | | | 1,054.31 |
| TOTAL LOSSES | | | | | 0.00 |
| | | | 813,915.00 | 814,969.31 | 1,054.31 |



Alaska Permanent Capital Management Co.
CASH LEDGER
CITY OF CRAIG - SCHOOL FUNDS
From 06-01-20 To 06-30-20

| Trade Date | Settle Date | Tran Code | Activity | Security | Amount |
|---|--------------------|------------------|-----------------------|---|------------------|
| CHARLES SCHWAB LIQUID BANK DEPOSIT ACCOUNT | | | | | |
| 06-01-20 | | | Beginning Balance | | 446,453.65 |
| 06-01-20 | 06-02-20 | wd | Purchase | US TREASURY BILLS 0.000% Due 09-24-20 | -434,804.89 |
| 06-11-20 | 06-12-20 | dp | Sale | US TREASURY BILLS 0.000% Due 07-16-20 | 249,969.31 |
| 06-12-20 | 06-12-20 | wd | Withdrawal | from Portfolio | -250,000.00 |
| 06-12-20 | 06-12-20 | wd | Withdrawal | from Portfolio | -25.00 |
| 06-15-20 | 06-15-20 | dp | Sale | US TREASURY NOTE 1.500% Due 06-15-20 | 565,000.00 |
| 06-15-20 | 06-15-20 | dp | Interest | US TREASURY NOTE 1.500% Due 06-15-20 | 4,237.50 |
| 06-15-20 | 06-15-20 | dp | Interest | CHARLES SCHWAB LIQUID BANK DEPOSIT ACCOUNT | 0.38 |
| 06-24-20 | 06-25-20 | wd | Purchase | US TREASURY BILLS 0.000% Due 12-17-20 | -569,571.54 |
| 06-30-20 | | | Ending Balance | | 11,259.41 |





Southeast Senior Services

A Division of Catholic Community Service, Inc.



Helping elders in Southeast Alaska stay healthy, safe and independent

August 3, 2020

Mr. Jon Bolling
City Administrator
City of Craig
PO Box 725
Craig, AK 99921

RECEIVED
AUG 06 2020

BY: _____
Coding: _____

Dear Mr. Bolling:

We want to thank the City of Craig for its generous support of our Craig/Klawock Senior Center. We are pleased to report the following services provided by our Craig/Klawock Senior Center staff in the fourth quarter of the Fiscal Year 2020:

- * 77 senior citizens received 3,470 home-delivered meals.
- * 13 senior citizens received 108 rides.

During the fourth quarter the Craig/Klawock Senior Center remained closed due to COVID-19. All elders were able to receive home-delivered meals during this time.

Please contact me at (907)463-6154 or Marianne.mills@ccsjuneau.org if you would like additional information.

Sincerely,

Marianne Mills

Marianne Mills
Program Director

MM/acb



CITY OF CRAIG, ALASKA

SALES TAX HISTORY

| DATE COLLECTED THROUGH | <u>09-30</u> | <u>12-31</u> | <u>03-31</u> | <u>06-30</u> | <u>TAX COLLECTED</u> |
|------------------------|----------------------|----------------------|----------------------|----------------------|------------------------|
| FY 2020 | | | | | |
| SALES TAX | \$ 662,466.11 | \$ 319,885.97 | \$ 272,765.07 | \$ 401,909.80 | \$ 1,657,026.95 |
| DELINQUENT SALES TAX | | | | | \$ - |
| TRANSIENT ROOM Tax | \$ 14,630.00 | \$ 4,880.00 | \$ 1,165.00 | \$ 770.00 | \$ 21,445.00 |
| LIQUOR SALES TAX | \$ 40,861.31 | \$ 26,130.85 | \$ 22,300.45 | \$ - | \$ 89,292.61 |
| | \$ 717,957.42 | \$ 350,896.82 | \$ 296,230.52 | \$ 402,679.80 | \$ 1,767,764.56 |
| FY 2019 | | | | | |
| SALES TAX | \$ 569,503.75 | \$ 316,481.96 | \$ 296,677.31 | \$ 402,803.62 | \$ 1,585,466.64 |
| DELINQUENT SALES TAX | | | | | \$ - |
| TRANSIENT ROOM Tax | \$ 16,465.77 | \$ 3,380.00 | \$ 2,565.00 | \$ 7,818.37 | \$ 30,229.14 |
| LIQUOR SALES TAX | \$ 36,790.92 | \$ 27,312.98 | \$ 21,469.67 | \$ 30,542.75 | \$ 116,116.32 |
| | \$ 622,760.44 | \$ 347,174.94 | \$ 320,711.98 | \$ 441,164.74 | \$ 1,731,812.10 |
| FY 2018 | | | | | |
| SALES TAX | \$ 537,976.31 | \$ 291,663.32 | \$ 262,758.36 | \$ 385,995.94 | \$ 1,478,393.93 |
| DELINQUENT SALES TAX | \$ 51.42 | \$ - | | \$ 726.91 | \$ 778.33 |
| TRANSIENT ROOM Tax | | | | \$ 6,505.00 | \$ 6,505.00 |
| LIQUOR SALES TAX | \$ 37,606.25 | \$ 23,672.80 | \$ 19,427.58 | \$ 27,260.38 | \$ 107,967.01 |
| | \$ 575,633.98 | \$ 315,336.12 | \$ 282,185.94 | \$ 420,488.23 | \$ 1,593,644.27 |
| FY 2017 | | | | | |
| SALES TAX | \$ 502,621.02 | \$ 292,983.36 | \$ 259,780.99 | \$ 401,574.00 | \$ 1,456,959.37 |
| DELINQUENT SALES TAX | \$ 89.20 | \$ - | \$ 940.00 | \$ 242.60 | \$ 1,271.80 |
| LIQUOR SALES TAX | \$ 35,622.70 | \$ 25,403.06 | \$ 21,737.00 | \$ 29,522.24 | \$ 112,285.00 |
| | \$ 538,332.92 | \$ 318,386.42 | \$ 282,457.99 | \$ 431,338.84 | \$ 1,570,516.17 |
| FY 2016 | | | | | |
| SALES TAX | \$ 556,020.59 | \$ 278,838.00 | \$ 233,466.00 | \$ 353,579.75 | \$ 1,421,904.34 |
| DELINQUENT SALES TAX | \$ 339.63 | | \$ 1,219.98 | \$ 4,210.50 | \$ 5,770.11 |
| LIQUOR SALES TAX | \$ 41,116.78 | \$ 23,435.00 | \$ 20,511.02 | \$ 28,575.92 | \$ 113,638.72 |
| | \$ 597,477.00 | \$ 302,273.00 | \$ 255,197.00 | \$ 386,366.17 | \$ 1,541,313.17 |
| FY 2015 | | | | | |
| SALES | \$ 610,769.01 | \$ 300,932.58 | \$ 240,859.79 | \$ 366,645.09 | \$ 1,519,206.47 |
| DELINQ | \$ 1,677.58 | \$ 5,208.38 | \$ 2,029.85 | \$ 1,780.58 | \$ 10,696.39 |
| LIQUOR | \$ 31,425.74 | \$ 39,475.48 | \$ 20,566.15 | \$ 30,175.41 | \$ 121,642.78 |

RECEIVED
JUL 20 2020

STATE OF ALASKA
DEPARTMENT OF NATURAL RESOURCES
DIVISION OF FORESTRY
SOUTHEAST AREA OFFICE

PUBLIC REVIEW
FIVE-YEAR SCHEDULE OF TIMBER SALES
STATE FISCAL YEARS 2021-2025

The Alaska Department of Natural Resources, Division of Forestry Preliminary Five-Year Schedule of Timber Sales for the Southern Southeast Area is available for public review. Per AS 38.05.113 this is a scoping document that outlines the proposed timber sale activity to be undertaken on State land over the next five years. The Five-Year Schedule is not a decision document.

The public is invited to comment on any aspect of the Five-Year Schedule of Timber Sales. Comments should be mailed to the Alaska Division of Forestry and must be received by the close of business at the Division of Forestry's office no later than September 4, 2020 to be included as comment in the adopted schedule. This document can be viewed at the Area Office in Ketchikan, the public libraries in Craig, Ketchikan, Petersburg and Wrangell, the State of Alaska's on-line public notice website <http://notice.alaska.gov/198870> as well as the DOF's website <http://forestry.alaska.gov/timber/ketchikan.htm#fiveyear>.

After public comment has been received and reviewed, the Division of Forestry may proceed with planning the proposed timber sales and associated developments. When each sale is prepared and ready for review, notice of the proposed decision and the opportunity for public comment will be given for that specific timber sale, as is required under state statutes and regulations.

FOR MORE INFORMATION OR TO SUBMIT COMMENTS CONTACT:

| | | |
|--------------------------------|----------|--|
| Alaska Division of Forestry | Contact: | Greg Staunton |
| 2417 Tongass Avenue, Suite 213 | Phone: | 225-3070 |
| Ketchikan, AK 99901 | Email: | greg.staunton@alaska.gov |

The State of Alaska, Department of Natural Resources, Division of Forestry Complies with Title II of the American with Disabilities Act of 1990. Individuals with disabilities who may need auxiliary aids, services, or special modifications to participate in this review may contact the number above.



**CITY OF CRAIG
MEMORANDUM**

To: Craig City Council
 From: Jon Bolling, City Administrator
 Date: August 13, 2020
 RE: Update & Direction on CARES Act Funds

Sheri Purser, Brian Templin, and I have worked together on two projections of likely CARES Act eligible expenditures through December. Those projections are shown below.

| PROJECTION 1 | | | | | |
|--------------------------------|---------------------|-----------|-----------|-----------|-----------|
| | | % Used | Balance | % Used | Balance |
| | | Payment 1 | Payment 1 | Payment 2 | Payment 2 |
| 19-Jun Deposit - Payment 1 | \$879,194 | | 0 | | \$879,194 |
| 8-Jul Draw | (\$458,399) | 52.1% | \$420,795 | | |
| 23-Jul Draw | (\$14,578) | 53.8% | \$406,217 | | |
| 15-Aug Payroll Draw - July | (\$100,000) | 65.2% | \$306,217 | | |
| 1-Sep Payroll Draw - August | (\$100,000) | 76.5% | \$206,217 | | |
| 30-Sep Payroll Draw - Sept | (\$100,000) | 87.9% | \$106,217 | | |
| 10-Oct Deposit - Payment 2 | \$446,685 | | | 0 | \$446,685 |
| 15-Oct Draw 1/2 Oct. Payroll | (\$50,000) | 93.6% | \$56,217 | 0 | \$446,685 |
| 31-Oct Draw 1/2 Oct. Payroll | (\$50,000) | 99.3% | \$6,217 | 0 | \$446,685 |
| 15-Nov Draw - 1/2 Nov payroll | (\$50,000) | 100.0% | \$0 | 9.8% | \$402,902 |
| 30-Nov Draw - 1/2 Nov. payroll | (\$50,000) | -- | \$0 | 21.0% | \$352,902 |
| 15-Dec Draw - 1/2 Dec. payroll | (\$50,000) | -- | \$0 | 33.4% | \$302,902 |
| 30-Dec Draw - 1/2 Dec. payroll | (\$50,000) | -- | \$0 | 47.6% | \$252,902 |
| Unspent: | \$699,586.50 | | | | |

| PROJECTION 2 | | | | | | |
|---------------------------------|---------------------|-----------|-----------|-----------|-----------|-----------|
| | | % Used | Balance | % Used | Balance | Balance |
| | | Payment 1 | Payment 1 | Payment 2 | Payment 2 | Payment 3 |
| 19-Jun Deposit - First Payment | \$879,194 | | 0 | | | |
| 8-Jul Draw | (\$458,399) | 52.1% | \$420,795 | | | |
| 23-Jul Draw | (\$14,578) | 53.8% | \$406,217 | | | |
| 15-Aug Payroll draw for July | (\$100,000) | 65.2% | \$306,217 | | | |
| 15-Aug Draw - Phase I | (\$145,000) | 81.7% | \$161,217 | | | |
| 10-Sep Deposit - Second Payment | \$446,685 | | \$161,217 | 0 | \$446,685 | |
| 1-Sep Draw - August Payroll | (\$100,000) | 93.0% | \$61,217 | 0 | \$446,685 | |
| 30-Sep Draw - Sept. Payroll | (\$100,000) | 100.0% | \$0 | 8.7% | \$407,902 | |
| 15-Oct Draw - 1/2 Oct. payroll | (\$50,000) | -- | \$0 | 19.9% | \$357,902 | |
| 31-Oct Draw - 1/2 Oct. payroll | (\$50,000) | -- | \$0 | 31.1% | \$307,902 | |
| 15-Nov Draw - 1/2 Nov payroll | (\$50,000) | -- | \$0 | 42.3% | \$257,902 | |
| 30-Nov Draw - 1/2 Nov. payroll | (\$50,000) | -- | \$0 | 53.5% | \$207,902 | |
| 30-Nov Draw - Phase 2 | (\$145,000) | | \$0 | 85.9% | \$62,902 | |
| 5-Dec Deposit Third payment | \$446,685 | | \$0 | -- | | \$446,685 |
| 15-Dec Draw - 1/2 Dec. payroll | (\$50,000) | -- | \$0 | 97.1% | \$12,902 | \$446,685 |
| 30-Dec Draw - 1/2 Dec. payroll | (\$50,000) | -- | \$0 | 100.0% | \$0 | \$409,587 |
| Unspent: | \$409,586.50 | | | | | |



As shown in the projection tables on page 1, without some additional effort to expend CARES Act funds before December 30, the city will turn back/forego some CARES Act funding. The estimated unspent funds range from about \$410,000 to about \$700,000. Projection 2 differs from Projection 1 in that under Projection 2 the city reimburses itself for the \$145,000 expended in the first round of its economic assistance program. Projection 2 also assumes expenditures of \$145,000 for Round 2 of the city's economic assistance program.

As the council is aware, the City of Craig is eligible to receive a total of \$1.78 million from the CARES Act, distributed in three payments. The city received the first payment of \$876,564 on June 19. The city receives the second payment of \$446,685 when 80% of the first payment is expended. The third payment, also totaling \$446,685, occurs when 80% of the second payment is expended.

At this point staff asks the council to issue guidance as to how aggressively to pursue implementation of new programs that would encumber what is now projected to be unused CARES Act funding. City staff frequently discusses avenues for accessing additional CARES Act funding, always with an eye toward compliance with the federal and state guidance on proper use of the funds. If the council directs staff to prioritize use of the available funding, staff will redouble its efforts to find compliant programs/expenditures of the funding. Those programs/expenditures could be continuations of existing programs already approved by the council, or new approaches to compliant use of the CARES Act funds.

The council should keep in mind that Congress is now considering modifications to the federal CARES Act that might change the rules regarding compliant expenditures. Among the changes under consideration are allowing local governments to use CARES Act dollars to replace municipal revenues lost due to COVID-19, and an extension to the December 30 deadline to obligate CARES funds. Either change could materially modify the projections on page 1.

Please note that Sheri Purser and Brian Templin made material contributions to this memo.

Recommendation

Provide direction to staff on what approach to take as to the projected surplus of AK CARES Act funds.



**CITY OF CRAIG
MEMORANDUM**

To: Craig City Council
From: Brian Templin, City Planner
Date: August 14, 2020
RE: COVID-19 Update

Area Patients and POW Testing

As of August 13, 2020, there were:

| Total Tests | Positive Tests | Negative Tests | Tests Pending |
|--------------------|-----------------------|-----------------------|----------------------|
| 1,609 | 7* | 1,512 | 90 |

*There were three positive cases on POW as a result of testing at the Ketchikan Airport.

Testing is generally reported to the EOC each Tuesday and made available to the public on Wednesdays.

To date there have been a total of ten positive cases on Prince of Wales:

- Resident Cases: 6
- Non-Resident Cases: 4
- Currently Active Cases: 0
- Recovered Cases: 10

State Health Mandates and Craig City Council Actions

The state has continued to update some of the previous mandates that were issued. The current mandates can be found at www.covid19.alaska.gov.

Starting August 11, 2020, the state modified travel requirements to require that all non-residents traveling into Alaska must have a negative COVID-19 test before they travel or pay \$250 for testing at the airport screening points. This change also eliminates the option for non-resident travelers coming in from out of state to choose to quarantine in lieu of testing. Residents will still have the options to test at the airport or quarantine in lieu of testing.

Incident Command and Agency Coordination Meetings

Brian Templin has been named as the Incident Commander for the city's COVID-19 Response. The city administrator, mayor, and council will still be involved in policy discussion and will see very little change in their involvement. The change in command will help to streamline day to day COVID-19 operations.

Staff continues to meet regularly with other agencies and working groups. Regular meetings include:

- Craig EOC Incident Management Team meetings every two weeks
- Prince of Wales Medical Stakeholder meetings every two weeks



- Weekly meetings between Alaska DHSS and DHS&EM staff and community emergency managers
- Meetings with Alaska DHS&EM staff related to fisheries management and issues as scheduled
- Regular check-in meetings with Public Health and individual incident management team members as needed.

No formal action is needed on this item.



CITY OF CRAIG MEMORANDUM

To: Craig City Council
From: Jon Bolling, City Administrator
Date: August 12, 2020
RE: Review Preliminary Decision from Alaska Department of Natural Resources on Tideland Conveyance

Attached you will find a copy of the preliminary decision by the State of Alaska to transfer ownership of approximately 20 acres of tideland to the City of Craig.

The city applied to the Alaska Department of Natural Resources for transfer of title to the tideland in March. The tideland subject to transfer is within the footprint of the proposed downtown harbor project. Taking title brings all tideland within the project area into city ownership.

The decision is preliminary. The State of Alaska will take public comment, if any, on the proposed conveyance and issue a final decision. Once a final decision is made, the city will receive management authority over the tideland. The actual conveyance of title will not take place until the tideland parcel is surveyed. The costs related to the survey are assigned to the city.

Public comment on the proposed conveyance is due by Friday, September 4.

I intend to submit comments to DNR before September 4, supporting the conveyance. If the council has any particular comments it would like included, please bring those comments up for discussion at the August 20 city council meeting.

In the meantime, feel free to contact me with questions.



**ALASKA DEPARTMENT OF NATURAL RESOURCES
DIVISION OF MINING, LAND AND WATER
SOUTHEAST REGIONAL OFFICE**

Preliminary Decision under AS 38.05.025

**Tideland Conveyance to City of Craig under AS 38.05.825
ADL 109054 – City of Craig Downtown Harbor**

PROPOSED ACTION: The Alaska Department of Natural Resources, Division of Mining, Land and Water, Land Conveyance Section (DNR), proposes to convey one parcel of state-owned tide and submerged land to the City of Craig, pursuant to AS 38.05.825, Conveyance of Tide and Submerged Land to municipalities, containing approximately 20 acres, final acreage will be determined by completing survey requirements. See Attachment A for a map of the parcel to be conveyed.

This decision determines whether the tide and submerged land selection by City of Craig meets the requirements for conveyance in accordance with AS 38.05.825, the Submerged Lands Act of 1953, and the Equal Footing Doctrine.

The public is invited to comment on this Preliminary Decision (PD). **The deadline for comments to be received is on or before September 4, 2020.** Refer to this decision under the heading PUBLIC NOTICE, DECISION AND APPEAL PROCEDURES on the final page of this decision for details on how, when and where to submit your comments.

AUTHORITY: The applicable authority includes Alaska Statutes (AS) and Alaska Administrative Code (AAC), specifically AS 38.05.035(e), AS 38.05.825, AS 38.05.125, AS 38.05.127, 11 AAC 51 and 11 AAC 55.

ADMINISTRATIVE RECORD: The administrative record for this PD is case file ADL 109054, which includes, but is not limited to the following: Prince of Wales Island Area Plan, 2008 Prince of Wales Island Area Plan Amendment, the Alaska Department of Environmental Conservation (DEC) Contaminated Sites map, the Alaska Department of Fish and Game (ADF&G) Alaska Fish Resource Monitor, and the 2007 Craig Coastal Management Plan.

SCOPE OF DECISION: The scope of administrative review under AS 38.05.825 and AS 38.05.035(e) for this proposed land transfer is limited to the determination on whether it is appropriate to convey the tidelands from the State of Alaska to the City of Craig, and the determination of imposing a ‘to’ and ‘along’ easement under AS 38.05.127. It additionally includes identification of any third-party interests, other interests of record, and stipulations necessary to ensure that statutory requirements have been met. This decision does not take into account any future development, or the effects of such development, that may occur after the transfer.



DESCRIPTION:

Location: The parcel is located on submerged lands within Klawock Inlet, adjacent to Alaska Tideland Survey (ATS) No. 212, within the City of Craig. It is located within Section 6, Township 74 South, Range 81 East, Copper River Meridian, more specifically described as follows:

The unsurveyed parcel comprising approximately twenty acres is located within Copper River Meridian, Southeast 1/4 of Section 6 of Township 74 South, Range 81 East, USGS Quad Map Craig B-4 NE, Latitude 55.479°N, Longitude 133.154°W, north of tidelands previously surveyed as ATS No. 212 in Klawock Inlet, City of Craig, Alaska. Final acreage will be determined by the required ATS.

Municipality: City of Craig

Native Corporation: Sealaska Corporation

Tribal Contact: Central Council of the Tlingit and Haida Indian Tribes of Alaska, Craig Tribal Association, Shaan-Seet, Incorporated

Water Bodies: The parcel is located in a navigable a body of water, Klawock Inlet.

Title: Acquisition Authority: The State of Alaska received title to the affected tide and submerged lands under the Alaska Statehood Act, Public Law 85-508, the Submerged Lands Act, Public Law 31 and under the Doctrine of Equal Footing upon entry of the state into the Union. Management is subject to the Public Trust Doctrine.

Third Party Interests: None identified.

Background: On March 5, 2020, the City of Craig submitted an application for conveyance of this submerged parcel, totaling 20 acres. A city resolution dated February 20, 2020 approved the proposed development.

The City of Craig has applied for a tideland conveyance of the submerged parcel in order to construct one rubble mound breakwater and one public moorage float system to create a year-round public boat harbor. The proposed parcel is seaward of city-owned tide and submerged lands within ATS 212.

The City of Craig has several harbor facilities designed to meet the needs of sport, recreational, subsistence, tourist, and commercial vessels. Construction of a public boat harbor within the proposed parcel will continue to meet the needs of the community by providing safe, year-round vessel moorage.

The 2006 Craig Coastal Management Plan (CCMP) states that Craig will continue to invest in the fishing industry through expansion of commercial and recreational harbors that increase the number of vessels based in Craig. The CCMP also states that filling may be required for expanded development of marine transportation facilities.

Planning and Classification: The project area is within the 1998 Prince of Wales Island Area Plan (POWIAP), and the 2008 Prince of Wales Island Area Plan Amendment (POWIAPA). The project area is within Unit 17: Craig/Klawock, subunit CT-30. AS 38.05.825(a)(5) requires that land to be conveyed must be either “classified for waterfront development or for another use that is consistent or compatible with the use proposed by the municipality or the proposed use of the land is consistent or compatible with a land use plan adopted by the municipality or the department.”



The general management and intent of the POWIAPA in Unit 17 was reviewed for consistency with the proposed conveyance. The lands are designated as General Use (Gu) under Land Classification Order No. SE-98-001A02. This designation converts to a classification of Resource Management Land (RMG). Lands designated Gu contain one or more resource values, none of which is of sufficiently high value to merit designation as a primary use, or, because of the size of the unit, a variety of uses can be accommodated with appropriate siting and design considerations (POWIAPA pg. 1-3).

The management intent for subunit CT-30 is to manage the unit for multiple uses, while protecting important habitats and resources (pg. 2 – 35). The proposed site is adjacent to an anchorage, and sport fishing for king salmon is conducted in the area. The proposed development is compatible with the area plan classification because the project would provide facilities to utilize the surrounding area for multiple uses with minimal impact.

Access, including access to & along public waters: The parcel is surrounded by and accessible by a navigable body of water. Pursuant to AS 38.05.825, the conveyance of tidelands cannot unreasonably interfere with public access and the municipality must provide reasonable access to public waters and tidelands. In addition, before a disposal of state land, AS 38.05.127 requires a determination by DNR regarding the reservation of specific public access easements to and along these waters.

In the final decision on this proposed action, DNR will determine whether this disposal of state interest will reserve a public access easement pursuant to AS 38.05.127(a)(2). Pursuant to 11 AAC 51.045, DNR will consider comments and evidence provided by the Alaska Department of Fish and Game (ADF&G) and from a municipality or other person during the public notice and review period in making this determination.

Reservation of Mineral Estate: The State of Alaska, as required by Section 6(i) of the Alaska Statehood Act and AS 38.05.125, expressly saves, excepts and reserves out of the grant those resources specified by statute. These include, but are not limited to, all oils, gases, coal, ores, minerals, fissionable materials, geothermal resources, and fossils of every name, kind or description, including the right to explore the same. The State also reserves the right to enter the land for the purposes of exploring for, developing, and producing these mineral resources. Exploration and development, if any, which could occur, would be consistent with AS 38.05.130 and other applicable statutes and regulations.

Hazardous Materials and Potential Contamination: It is DNR's management responsibility to protect the overall public interest if there is a reasonable expectation that a hazardous condition, or hazardous, toxic or radiological material or contamination from such material exist or is known to exist on the land proposed for disposal. No hazardous material or contamination from hazardous material is known to exist on the land proposed for conveyance; therefore, the environmental risk associated with this proposed conveyance is minimal.

The City of Craig is responsible for inspection of the area of the tideland selection and familiarization with the condition and quality of the land. The State makes no representations and no warranties, express or implied, concerning the existence or absence of any hazardous substances, hazardous wastes, contaminants, or pollutants on the land proposed here for conveyance. The State does not assume any liability for the removal of hazardous substances, hazardous wastes, contaminants, or pollutants, nor for the remediation of the site should such substances ever be identified.



Survey: An Alaska Tideland Survey (ATS) will be required for parcels that are not adequately surveyed and platted for conveyance, at the expense of the City of Craig, prior to issuance of a state tideland patent. If no approved survey exists, then one must be performed by an Alaska Registered Land Surveyor under direction of the DNR Survey Section. This parcel will require a survey, and the City of Craig will be responsible for the expense of any survey and plat recordation. There is no requirement under state statutes to appraise the land prior to conveyance.

Conditional Leases and Permits: If the tidelands are approved for conveyance, the City of Craig will receive management authority under AS 38.05.825, when the FFD becomes effective. The City may lease the approved tideland area, but may not sell it, pursuant to AS 38.05.825(c). Additionally, the City may not lease the tidelands approved for conveyance to shore fisheries, pursuant to AS 38.05.824(d). There are no shore fisheries within the selected tideland area.

Unauthorized Use: DNR has not physically inspected the City of Craig's tideland selection for the presence of unauthorized use, but it has reviewed department records and is unaware of any existing unauthorized use. The City is expected to and has been given the opportunity to inspect its tideland selection to familiarize itself with the condition and quality of the land.

Disposition of Leases, Permits and Applications: Administration of active leases, permits, and easements in the surface estate issued by DNR on tideland to be conveyed will be transferred to the City; when the FFD becomes effective, unless specified differently. Applications for a lease or permit that have not been adjudicated or issued will be closed.

Archaeological Resources: The Alaska Office of History and Archaeology (OHA) maintains the Alaska Heritage Resources Survey (AHRS) which is an inventory of all reported historic, prehistoric and archaeological sites in the state. There are no known archaeological or cultural resources on the tidelands selected for conveyance in this PD. However, should such resources be found once these tidelands are under construction or conveyed, the city must take those actions required by law in accordance with AS 41.35.070(d).

Agency Review: The conveyance application documents were distributed to state agencies for review from May 28, 2020 through June 11, 2020. The intent of an agency review is to request comments from agencies that may be affected by a conveyance decision. Agencies are given the opportunity to evaluate and comment on the municipality's land selection to determine if the State should retain all or a portion of the selected lands, and if so, provide supporting reasons for the requested action. Additionally, agencies are requested to identify any stipulations that may be appropriate if the land is to be conveyed out of state ownership.

The agencies contacted were ADF&G; DEC; Department of Transportation & Public Facilities; DNR-Division of Mining Land & Water sections; DNR-Division of Agriculture; DNR-Division of Geological & Geophysical Surveys; DNR-Division of Oil and Gas; DNR-Division of Parks and Outdoor Recreation; DNR-State Historic Preservation Office; and the Mental Health Trust Land Office.

Agency Comments:

DNR received brief comments of non-objection from the following agencies:
DNR Division of Agriculture, DNR Division of Oil and Gas, DNR DMLW Mining section, and the Department of Transportation & Public Facilities.



DNR response: DNR appreciates your review of the application materials.

ADF&G, Division of Wildlife Conservation comment: ADF&G does not have any objections to the proposed conveyance, but indicated that the proposed location is used for sport fishing and is within the habitat and biologically important areas for multiple marine mammal species such as the Stellar sea lion and Mexico humpback whale. The project has the potential to displace marine mammals during important periods, and ADF&G requests that construction be avoided during the feeding months of June through November. In addition, ADF&G requested that the proposed harbor facilities utilize a design to reduce marine mammal entanglement. This involves keeping lines secured and under tension, ensuring waste material and debris are collected and disposed of correctly, and using caution when operating vessels. Any entanglements should be reported to the National Marine Fisheries Service (NMFS) 24-hour hotline at (877) 925-7773.

DNR response: DNR appreciates your review of the application materials. DNR will provide NMFS information and recommendations on construction timing to the City of Craig. However, the scope of this decision is limited only to the transfer of title to this land from the State of Alaska to the City of Craig. It does not take into account any future development, or the effects of such development, that may occur after the transfer.

Public Notice: The public is invited to comment on this Preliminary Decision. Please see the Public Notice section, at the end of this document, for details on submission of comments, including comment deadline and conditions.

Compliance with qualifications under AS 38.05.825: AS 38.05.825(a) requires DNR to convey to the municipality tide and submerged lands suitable for occupation and development when requested by the municipality unless it is found that public interest in retaining state ownership clearly outweighs municipal interest, and if the land is within the boundaries of the municipality; the use does not unreasonably interfere with navigation or public access; the municipality has applied for conveyance; the land is not subject to a shore fisheries lease under AS 38.05.082; the land classification is consistent with or compatible with the proposed use; and the land is required for a public or private development approved by the municipality. The City of Craig has met the application requirements of the statute through the following:

- Public Interest- The public interest in retaining these lands in state ownership does not outweigh the municipal interest in managing these submerged lands because the conveyance will accommodate a municipal harbor facility that will be used by the public. DNR believes that there are no other overriding state interests; the municipal interest clearly rises above the public interest in retaining these lands in state ownership.
- Location- The land is within the boundary of the municipality.
- Navigation- The proposed use would not unreasonably interfere with navigation.
- Public Access- The proposed use would not unreasonably interfere with public access.
- Application- The municipality has submitted an application for conveyance.
- Shore Fisheries Leasing- The land is not subject to shore fisheries lease.
- Land Classification- The land classification is consistent with the proposed action.
- Municipal Approval of Development- The assembly supports the proposed development for this tideland conveyance through City of Craig Resolution No. 20-03.



DISCUSSION AND ALTERNATIVES:

Alternatives considered:

1. Take no action to approve, reject, or postpone the tide and submerged land selection by the City of Craig. This alternative would, in effect, preclude the City's ownership of the tideland considered to be important for their community development and access. This action would be inconsistent with the purpose of AS 38.05.825 and inconsistent with the basis for the disapproval of a tideland selection in that section of statute. A tideland selection can only be rejected when the state's interest outweighs that of the municipality, and there is no basis for such a determination.
2. Reject the City of Craig's selection in its entirety. This alternative would have the same effect as Alternative #1 and would, similarly, be inconsistent with the requirements of the statute.
3. Approve the proposed conveyance of the tide and submerged land parcel to the City of Craig with management authority to be transferred when the Final Finding and Decision becomes effective. This alternative meets the intent of the statute to convey tide and submerged land to municipalities where the municipality's interest in obtaining the tideland outweighs the public interest in retaining state ownership.

RECOMMENDATION:

A. Recommended alternative

DNR has determined that Alternative No. 3 is the preferred alternative. Under AS 38.05.825, no direct economic benefit is realized by the State, but further development of this parcel will serve the needs of the community of Craig. Facilitating community development activities in Craig indirectly provides economic benefit to the State by encouraging settlement and related economic activity. Additionally, the project meets the intent of the POWIAPA. DNR believes that the proposed conveyance complies with the requirements of AS 38.05.825, as discussed above. Unless public comment indicates that the parcel does not qualify for conveyance under AS 38.05.825, or that the public interest in retaining the parcel clearly outweighs the municipality's interest in retaining the parcel, DNR must convey the parcel subject to completion of an ATS.

B. Recommended conditions, restrictions and reservations

If approved for conveyance, applicable conditions, restrictions and reservations will be imposed upon transfer of equitable title when the Final Finding and Decision is effective and on the final conveyance document, including but not limited to the following:

1. Administration of state leases and permits in the surface estate, if any, will be transferred to the City when the FFD is effective. Applications for state leases or permits in the subject area that have not been adjudicated or issued will be closed.
2. Management authority for the approved tidelands will be transferred to the City when the FFD is effective. When approved, the City may execute leases and permits prior to issuance of a state conveyance document in accordance with AS 38.05.825.
3. All mineral related permits, licenses, claims and leases affecting the tideland proposed for conveyance, if any, will remain under the authority of the state.



4. The City is subject to the requirements of the *Public Trust Doctrine* as it applies to these lands and to the requirements under AS 38.05.825.
5. Notification to the Alaska State Historic Preservation Office in accordance with AS 41.35.070(d) is required upon discovery of historic, prehistoric, or archaeological sites, locations, remains or objects.

C. Conveyance document to include following:

The approved tideland conveyance to the City of Craig is subject to the following conditions, restrictions, and reservations:

1. Valid existing rights, all required easements and the following conditions: 1) Grantee may lease the land, but may not sell it; 2) Title to the land conveyed under this authority reverts to the State upon dissolution of the municipality; 3) Grantee takes title to the tide and submerged lands subject to the Public Trust Doctrine that may be enforced by the State in a court of competent jurisdiction; 4) The municipality shall be required to ensure that reasonable access to public waters and tidelands is provided; 5) The municipality may not lease land conveyed under this section for shore fisheries, but after conveyance, the land may be leased by the State for shore fisheries under AS 38.05.082 if the Commissioner determines that the lease is compatible with the municipality's use of the land.
2. Pursuant to AS 38.05.125 the mineral estate shall not be conveyed.



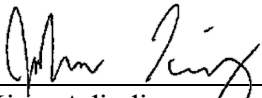
FINDING:

The following are findings of this Preliminary Decision:

1. That it is appropriate to convey approximately 20 acres of state-owned tide and submerged lands to the City of Craig pursuant to AS 38.05.825.
2. That the interest of the state to retain these tide and submerged lands does not outweigh the interest of the City in obtaining the tideland selections.

This is a Preliminary Decision and subsequent public and agency review may result in changes to the preferred alternative or disapproval of the proposed action altogether.

This Preliminary Decision, described above, as represented by the preferred alternative has been reviewed and considered. I find that the recommended action may be in the best interest of the state and that it is hereby approved to proceed to public notice.



John King, Adjudicator
Natural Resource Specialist III
Land Conveyances Section

August 5, 2020

Date



Rachel Longacre, Manager
Section Chief
Land Conveyances Section

August 5, 2020

Date



PUBLIC NOTICE, FINAL DECISION AND APPEAL PROCESS:

Requesting Input for a Proposed Land Conveyance:
City of Craig Downtown Harbor – ADL 109054

Comment Period Ends 5:00PM, Friday, September 4, 2020

This proposed project includes offering for conveyance an unsurveyed parcel described in the Preliminary Decision document.

Location: Klawock Inlet, City of Craig

In accordance with the provisions AS 38.05.945, the Division of Mining, Land and Water has prepared a preliminary written decision proposing to convey a parcel containing approximately 20 acres of state-owned submerged land to the City of Craig within its municipal boundaries. The conveyed parcel will be used to construct two rubble mound breakwaters and a public moorage float system to create a year-round public boat harbor.

The public is invited to comment on the Preliminary Decision proposing to transfer ownership of state-owned tide and submerged lands to the City of Craig. Comments may be provided in written form to John King, Adjudicator at john.king@alaska.gov or by mail to the Division of Mining, Land and Water, Land Conveyances Section, P.O. Box 111020 Juneau, AK 99811, or send by fax: (907) 500-9011. **The deadline for public comment is 5:00PM, Friday, September 4, 2020.** Only persons from whom DNR DMLW Land Conveyances Section receives timely, written comments during the identified comment period will be eligible to file an appeal of the Final Finding and Decision.

The postmasters in the following communities will be requested to post the public notice per AS 38.05.945: City of Craig, City of Klawock, and City of Hydaburg. The public notice is available on the Alaska Online Public Notice System at: <https://aws.state.ak.us/OnlinePublicNotices/Default.aspx>. Additionally, the public notice will be sent to the Sealaska Corporation, Central Council of the Tlingit and Haida Indian Tribes of Alaska, Craig Tribal Association, and Shaan-Seet, Incorporated.

For assistance in obtaining the documents by an alternative method, to request auxiliary aids, services, or special accommodations, contact DNR's Public Information Centers on State work days, Monday through Friday, between 10AM and 5PM in Anchorage at 907-269-8400, Fairbanks at 907-451-2705, or the Southeast Land Office in Juneau at 907-465-3400 (TTY for the hearing impaired for all locations: 711 for Alaska relay or 800-770-8973), or go to <http://dnr.alaska.gov/commis/pic/> for additional contact information. Individuals who require special assistance must request assistance from the Public Information Center in Anchorage no later than 4:00 PM, Friday, August 28, 2020

If no significant change is required, the Preliminary Decision including any minor changes and a summary of comments and responses, will be issued as the Final Finding and Decision, without further notice. A copy of the Final Finding and Decision will be sent to any persons who commented timely on the Preliminary Decision.

DNR reserves the right to waive technical defects in this notice.

Attachment A: Parcel Map



Alaska Mapper

Spherical Mercator WGS 84 - EPSG:3857
Date Created: 7/9/2020

Anadromous Fish Streams



PLSS Section Grid



Municipal Tideland



GRAPHIC ILLUSTRATION ONLY
Source documents remain the official record. Please refer to the Land Administration System (LAS) casefile for more detailed information on specific cases.
The State of Alaska makes no expressed or implied warranties (including warranties of merchantability and fitness) with respect to the character, function, or capabilities of this product or its appropriateness for any user's purposes. In no event will the State of Alaska be liable for any incidental, indirect, special, consequential or other damages suffered by the user or any other person of entity whether from use of the product, any failure thereof or otherwise, and in no event will the State of Alaska's liability to you or anyone else exceed the fee paid for the product.



CITY OF CRAIG MEMORANDUM

To: Craig Mayor and City Council
From: Brian Templin, City Planner
Date: August 12, 2020
RE: Economic Assistance Round 2 Grant Results and Approval

At the July 16, 2020 council meeting the council considered and approved criteria and an application for a second round of funding for Craig small businesses and non-profits to receive economic assistance. The council originally appropriated \$200,000 at an earlier meeting to be distributed to eligible grant applicants. Approximately \$145,000 of the appropriation was distributed in the first round of funding. Under the modified criteria approved by the council on July 16th applicants are eligible for funding as follows:

- Non-Profits – up to \$7,500
- Businesses with up to \$100,000 total income – up to \$3,000
- Businesses with \$100,001 to \$250,000 in total income- up to \$5,000
- Businesses with \$250,001 to \$999,999 in total income – up to \$10,000
- Sole Proprietorships whose business income is not at least 75% of their adjusted gross income, but whose business reported at least \$10,000 in gross sales/rentals as reported on their 2019 city sales tax returns (or on their IRS Schedule C for business that do not report sales tax) - \$3,000
- Sole Proprietorships whose business income is not at least 75% of their adjusted gross income, but whose business reported at least \$100,000 in gross sales/rentals as reported on their 2019 city sales tax returns (or on their IRS Schedule C for business that do not report sales tax) - \$4,000

The final grant amounts will be determined by the number of grants and the allocated grant limits shown above. Grant applications were open from July 17 to August 13, 2020. There was a total of 31 grants submitted.

All grant applications were reviewed initially by a staff member using the objective eligibility criteria approved by the council at the July 16th meeting. The city administrator was involved in the final review of all grant applications. It is important to note that the eligibility criteria did not ask applicants to document the extent of the impact or the specified need for assistance, but made businesses eligible by meeting the criteria set forth by the council.

There was one grant that was determined to be ineligible. That grant application was submitted by an individual who usually works on a fishing vessel in Craig in the summers, but could not this year due to travel and other COVID-19 related restrictions. The grant applicant did not meet several of the criteria and the fishing vessel owner submitted a separate grant application, which is eligible for funding. I have notified the fishing vessel owner that payroll for the employee who was not able to travel to Craig to fish this year was an eligible expense for the grant funds that they were eligible to receive for the business.



If the council chooses to fund grant applications that don't meet the initial review criteria, it should be aware that there may be other businesses or individuals who chose not to apply because they knew they were ineligible, but may be eligible under some changed criteria.

The list of eligible grants under round includes three grants that were not eligible under the first round, but are eligible under the revised criteria adopted for round 2.

List of all grants

| Grant Number | Applicant | Eligible/Not Eligible | Funding Amount |
|---------------------|--|------------------------------|-----------------------|
| C19-20-15 | Naanis | Eligible* | \$3,000 |
| C19-20-16 | Aimee's Cabin Rentals | Eligible* | \$4,000 |
| C19-20-27 | Alaska Top Dog Charters | Eligible* | \$3,000 |
| C19-20-30 | F/V Revelation | Eligible | \$3,000 |
| C19-20-31 | F/V Julie Kristine LLC | Eligible | \$3,000 |
| C19-20-32 | William Farmer LLC (Fisheries) | Eligible | \$3,000 |
| C19-20-33 | F/V Cest la Vie (Steve Merritt) | Eligible | \$3,000 |
| C19-20-34 | F/V Isabel | Eligible | \$3,000 |
| C19-20-35 | F/V Flat Point | Eligible | \$3,000 |
| C19-20-36 | Catch A King Charters | Eligible | \$10,000 |
| C19-20-37 | Mac's Fish Camp | Eligible | \$3,000 |
| C19-20-38 | Seaborn Seafood LLC | Eligible | \$4,000 |
| C19-20-39 | F/V Alissa Dawn & F/V Kaela Dawn | Eligible | \$3,000 |
| C19-20-40 | Ron Dawn's Boat LLC | Eligible | \$3,000 |
| C19-20-41 | POW Aluminum and Marine LLC | Eligible | \$3,000 |
| C19-20-42 | Hamilton Fisheries | Eligible | \$3,000 |
| C19-20-43 | Ruth Ann's Hotel | Eligible | \$4,000 |
| C19-20-44 | F/V Cest la Vie (Stephanie Merritt) | Not Eligible | \$0 |
| C19-20-45 | F/V Fishnpohl Inc. | Eligible | \$5,000 |
| C19-20-46 | Shortcut Timber Salvage LLC | Eligible | \$3,000 |
| C19-20-47 | F/V Vulcan Inc | Eligible | \$5,000 |
| C19-20-48 | Njord | Eligible | \$5,000 |
| C19-20-49 | KRBD | Eligible | \$7,500 |
| C19-20-50 | Oslo Inc | Eligible | \$3,000 |
| C19-20-51 | F/V Kristina | Eligible | \$3,000 |
| C19-20-52 | F/V Julie Marie | Eligible | \$3,000 |
| C19-20-53 | Cambazam Art | Eligible | \$3,000 |
| C19-20-54 | Armstrong Janitorial | Eligible | \$3,000 |
| C19-20-55 | Christine's Therapeutic Massage Center | Eligible | \$3,000 |
| C19-20-56 | Ocean Beauty | Eligible | \$3,000 |
| C19-20-57 | PAWS | Eligible | \$7,500 |



*These grant applications were ineligible during the first round of funding but are eligible under the modified criteria.

Some of the grant applications appear to be eligible based on the application but we are still waiting on backup documents or other requirements to be completed by the applicant. Final review of backup documents may change eligibility or the final maximum grant amount.

There were 31 grant application submitted in round 2 for a total of up to \$115,000 in funding. There is not adequate funding in the original appropriation to fully fund all eligible grants in the second round. The council has a couple of alternatives which include:

1. The council could choose to appropriate additional funds to fund the eligible grantees to the dollar amounts shown above. The council would need to appropriate an additional \$60,000 to the program to fund the eligible grantees fully.
2. The council could choose to reduce the grant amounts proportionally based on the available funding. Based on the data so far this would result in each grantee receiving about 48% of the maximum grant awards (i.e. if a grantee was eligible for up to \$3,000 they would receive \$1,440, if a grantee were eligible for up to \$10,000 they would receive \$4,800).

As part of the final motion, the council should include direction to staff regarding the amount appropriated.

At the July 16th council meeting staff reported to the council that if the council is interested in another round of grant funding that it would make sense to use sales tax data for most Craig businesses and award a percentage of any losses between 2019 and 2020 as reported on city sales tax reports. Finance staff is working on a final list based on the second quarter tax returns (April 1 – June 30) to see what this would look like in total dollars. Staff will also work to identify businesses that are not subject to sales tax and propose a method to calculate payments to those businesses. Staff will bring additional information to the council on how to complete a third round of economic assistance for consideration.

Recommended Actions:

1. Move to approve eligible applications for Craig 2020 COVID-19 Economic Assistance Round 2 Grants listed by staff and direct staff to execute grant agreements. The motion should include direction to staff to either appropriate additional funds as necessary, or to reduce the grant amounts to stay within the original \$200,000 appropriation.



CITY OF CRAIG MEMORANDUM

To: Craig City Council
From: Jon Bolling, City Administrator
Date: August 13, 2020
RE: Consider Solicitation for Medevac Memberships

Attached is a draft solicitation letter intended to be sent to medevac flight service providers. The letter is intended to encourage the providers to respond with an offer to sell medevac memberships in bulk to city residents, memberships that may be paid for by the City of Craig using CARES Act funds.

The solicitation is brief, and leaves room for the medevac providers to detail membership terms specific to their organization. Ultimately, though, the solicitation is worded such that the city prefers that the three terms detailed in the letter be included in any membership offer.

If the city receives responses from more than one medevac provider, and assuming that all responses include terms acceptable to the city, then the city should make those offers known to its residents and allow qualifying households to select the membership preferred by the household.

There would be some small amount of paperwork needed to implement the membership offers, including a statement from each household that it has been impacted by COVID-19, and developing a method to make membership payments each medevac provider; I believe that those details can be worked out through discussions with the providers.

If the council approves of the solicitation format, staff will make final edits to the solicitation and make sure they are sent to the three known medevac providers in Southeast Alaska.

Recommendation

That the council provide input on the solicitation format and direct staff to implement the medevac membership program using CARES Act funds.



August 21, 2020

Medevac Provider
XXX Street
City, State, Zip

RE: Solicitation for Medevac Provider Memberships of City Residents

Dear _____:

The City of Craig invites proposals from medevac flight service organizations to provide memberships for city residents. Membership fees will be funded by the city.

The City of Craig population estimate is 1,100 residents housed in approximately 470 households.

Memberships must:

1. Be valid for twelve months from the date of purchase;
2. Provide air medevac transport without cost to the member household;
3. Provide air medevac transport without cost to the member household regardless of whether the member household carries medical insurance.

Medevac flight service organizations responding to this invitation should detail household membership costs, and other terms and conditions in their response.

Proposals made in response to this invitation are due by noon local time on Thursday, September 10, 2020. The city may accept and fund membership proposals in response to this solicitation from more than one medevac flight service organization. See attached General Conditions sheet for additional information, or contact me at Craig City Hall, or by email at administrator@craigak.com.

Sincerely,

Jon Bolling
Craig City Administrator



General Conditions
City of Craig Solicitation – Medevac Provider Memberships

1. **REJECTION OF PROPOSALS.** The City of Craig reserves the right to reject any and all proposals and to waive any informality in the proposals received whenever such rejection or waiver is in the best interest of City of Craig. Contractors must be in good standing with City of Craig, and not debarred from Federal and/or State projects.
2. **FIRM OFFER.** For the purpose of award, proposals made in accordance with this solicitation must be held firm for a period of 90 calendar days from the date of acceptance of the proposal.
3. **LIABILITY.** The Contractor shall hold and save the City of Craig, its officers, agents, and employees harmless from liability of any nature. This includes any costs, expenses, suits or damages of any kind sustained by any person(s) or property by any virtue of performance resulting from proposals, unless arising from carelessness or negligence by the City of Craig, which will be apportioned on a comparative fault basis.
4. **DISPUTES:** Any disputes shall be handled in accordance with City of Craig’s procurement policy.
5. **SUBMISSION OF PROPOSAL.** Proposals may be mailed (PO Box 725 Craig, AK 99921), hand-delivered to Craig City Hall (500 Third Street), or emailed (administrator@craigak.com). Proposals are due by 12:00 noon Thursday, September 10, 2020.
6. **OWNER/CONTRACTOR RELATIONSHIP.** Notice is hereby given that each medevac provider is an independent contractor and is not an employee or agent of the City of Craig, and is, therefore, entitled to no insurance coverage, whether worker’s compensation or otherwise and no other benefits accorded to city employees. No withholding, FICA, or other taxes (whether income sales or otherwise) or other amounts will be withheld from payments due under the scope of work of this invitation.
7. **POSTPONEMENT OF OPENING.** The City of Craig reserves the right to postpone the date and time for receipt of proposals at any time prior to the time announced for opening of proposals.
8. **CONFIRMAITON OF RESPONSES.** The responder is solely responsible for delivery of its proposal to the City of Craig by the promulgated deadline. Responders should confirm delivery of proposals with the City of Craig.



CITY OF CRAIG MEMORANDUM

To: Craig City Council
From: Jon Bolling, City Administrator
Date: August 13, 2020
RE: Consider Appointment of Election Judges & Set Compensation

The following Craig residents have agreed to serve as election judges: Ashley Knock (Chairwoman); Karen Coffey; Evelyn Willburn; Shirley Harris; Sarah Altland; and Brian Templin.

Per Section 2.12.220.B of the Craig Municipal Code, the mayor, with approval of the council, appoints judges for municipal elections.

It is customary for the city to provide a stipend to each judge that works the election. Staff recommends \$200 for the chairing judge, and \$150 for every other participating judge.

Recommendations

1. Move to appoint Ashley Knock (Chairwoman), Karen Coffey, Evelyn Willburn, Shirley Harris, Sarah Altland, and Brian Templin as 2020 municipal election judges.
2. Approve a stipend of \$200 for the chairwoman judge, and a stipend of \$150 for each participating election judge.



CITY OF CRAIG MEMORANDUM

To: Craig City Council
From: Jon Bolling, City Administrator
Date: August 13, 2020
RE: Review of Municipal Election Newsletter

In most years, the city publishes in September a municipal election newsletter for delivery to Craig post office boxes. A draft copy of the 2020 City of Craig municipal election newsletter is attached to this memo for council review.

The newsletter is typically prepared on an 11" x 17" format, and folded twice for mailing. The newsletter is typically published after the closing date for filing for local elected office, so that the names of all the candidates who have filed appear in the newsletter as they generally will appear on the ballot. About half the newsletter is devoted to describing the ballot proposition asking voters to decide on whether the city can issue general obligation debt to finance the city's match for the downtown harbor breakwaters.

Please take note of the following.

1. I plan to have Pioneer Printing apply some formatting and editing suggestions to the newsletter to improve its appearance. The company is particularly good at layouts and graphics.
2. I will likely remove the lines in the harbor drawing that show the moorage floats because the financing ballot proposition will not fund the float system.
3. Staff is working on adding annotation to the drawing identifying well known landmarks (perhaps the web loft, boardwalk, and City Dock) to aid the reader in visualizing where the breakwaters would be built.
4. Part of the newsletter is used to remind voters that the voting place is moved to the City Gym this year, a reminder about absentee voting dates, and a reminder that October 6 is election day.

The narrative describing the harbor financing attempts to provide some project history with details of the dollar amount needed, what the financing would pay for, and where the breakwaters would be built. There appears to be some room for additional text if the council has suggestions on adding specific items to the project descriptions.

I hope to have the newsletter in the mail the week following the closing date of filing for office. The closing date for filing local candidacy forms is September 4.

I welcome council comments regarding the newsletter content.



Craig Downtown Harbor Project

*** DRAFT ***

The ballot for the municipal election on October 6, 2020 will contain a measure asking Craig voters to consider authorizing the City of Craig to borrow up to \$4.4 million to meet the city's share of the cost to construct two breakwaters in front of the downtown cannery property. Voter approval is required before the city may issue the debt. A copy of the proposed ballot measure is shown at the bottom of page _____.

The breakwaters would enable subsequent installation of moorage facilities to complete the long-planned construction of a harbor based at the waterfront at the old cannery site.

The breakwater project is estimated to cost \$22 million. Eighty percent of the project cost, about \$17.6 million, is provided by the US Army Corps of Engineers. The \$4.4 million subject to the ballot measure represents the city's 20 percent match.

The financing would be made through issuance of general obligation (GO) debt via bonds or a direct loan from a bank. Like all general obligation debt in Alaska, the debt pledges the full faith and credit of the community to repay the debt. In practice, the City of Craig proposes to repay the loan using earnings from the Craig Endowment Fund. At its current market value of \$12.7 million, the Fund generates about \$760,000 in earnings each year. After accounting for other uses of the earnings, about \$365,000 is available for appropriation by the city council. The \$365,000 balance is more than the amount needed to make annual payments on the proposed \$4.4 million breakwater loan.

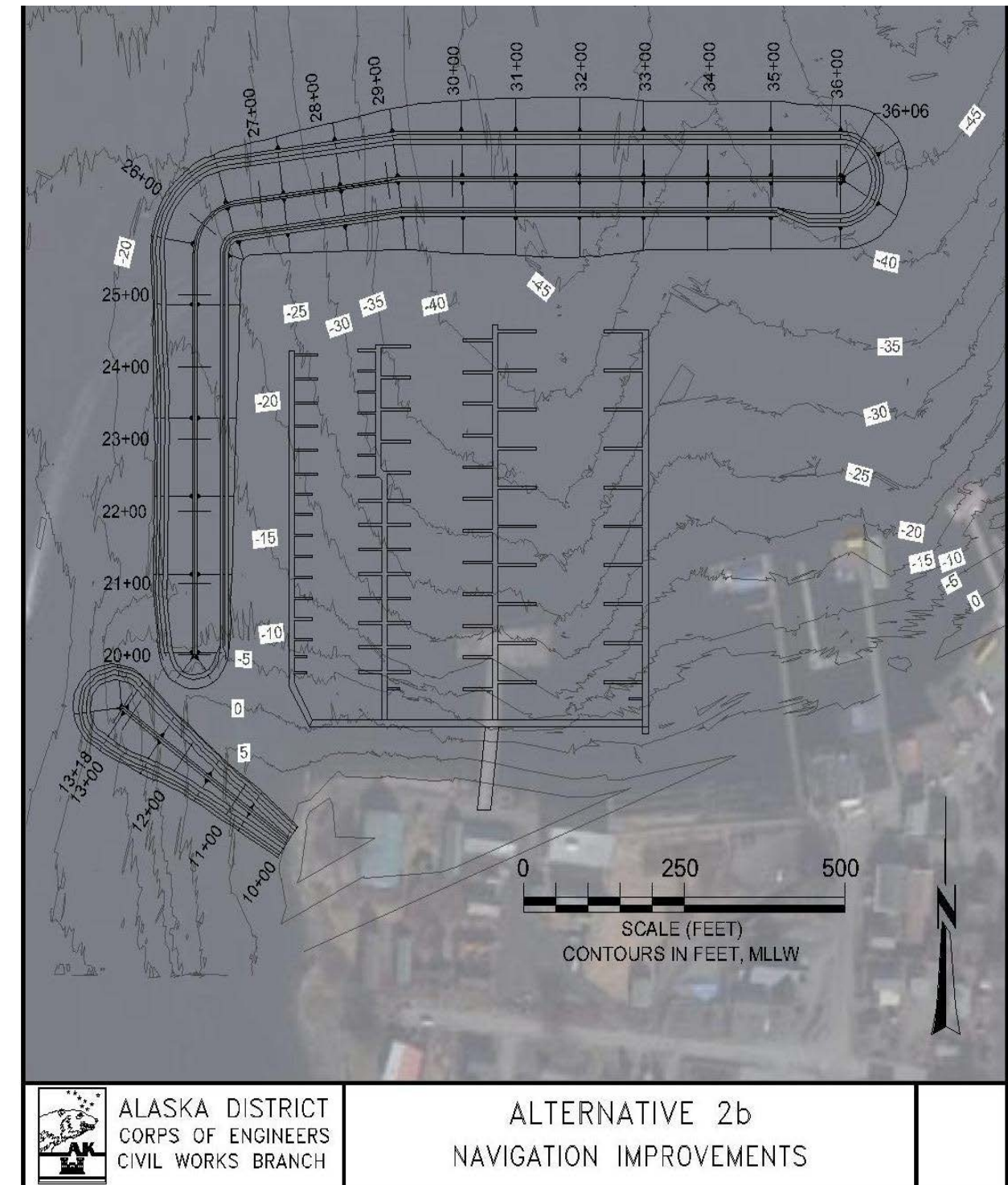
The city has one existing GO bond, totaling about \$1.5 million, for improvements made to the Craig Aquatic Center. That bond is repaid using interest earned by the Craig Endowment Fund.

The breakwater project will create a 10.1-acre, protected moorage basin on the downtown waterfront. Planned improvements to the moorage basin include demolition of derelict piling, structures, and debris, and installation of moorage floats and ramps. The planned moorage improvements are not yet designed, and will require separate financing to design and construct.

A drawing of the proposed breakwaters project is shown on the next page. At this point the design calls for two breakwaters. The first breakwater would run approximately 318 feet diagonally from the shore near the Web loft building. The second breakwater is a 1,600 foot long, L-shaped design. The proximity and dimensions of the harbor features in the drawing are approximate. Please note that the proposed ballot measure does not provide funding for moorage facilities shown in the drawing. If funds are available, some of the \$4.4 million may be used to demolish the old cannery dock and remove unused piling from the waterfront.

If voters approve the ballot measure, the city will proceed with the proposed financing. If the measure is not approved, the city council may consider other financing alternatives, or choose not to proceed with the project.

*** DRAFT ***



A pre-engineered drawing of the proposed project breakwaters, seaward of the cannery property.