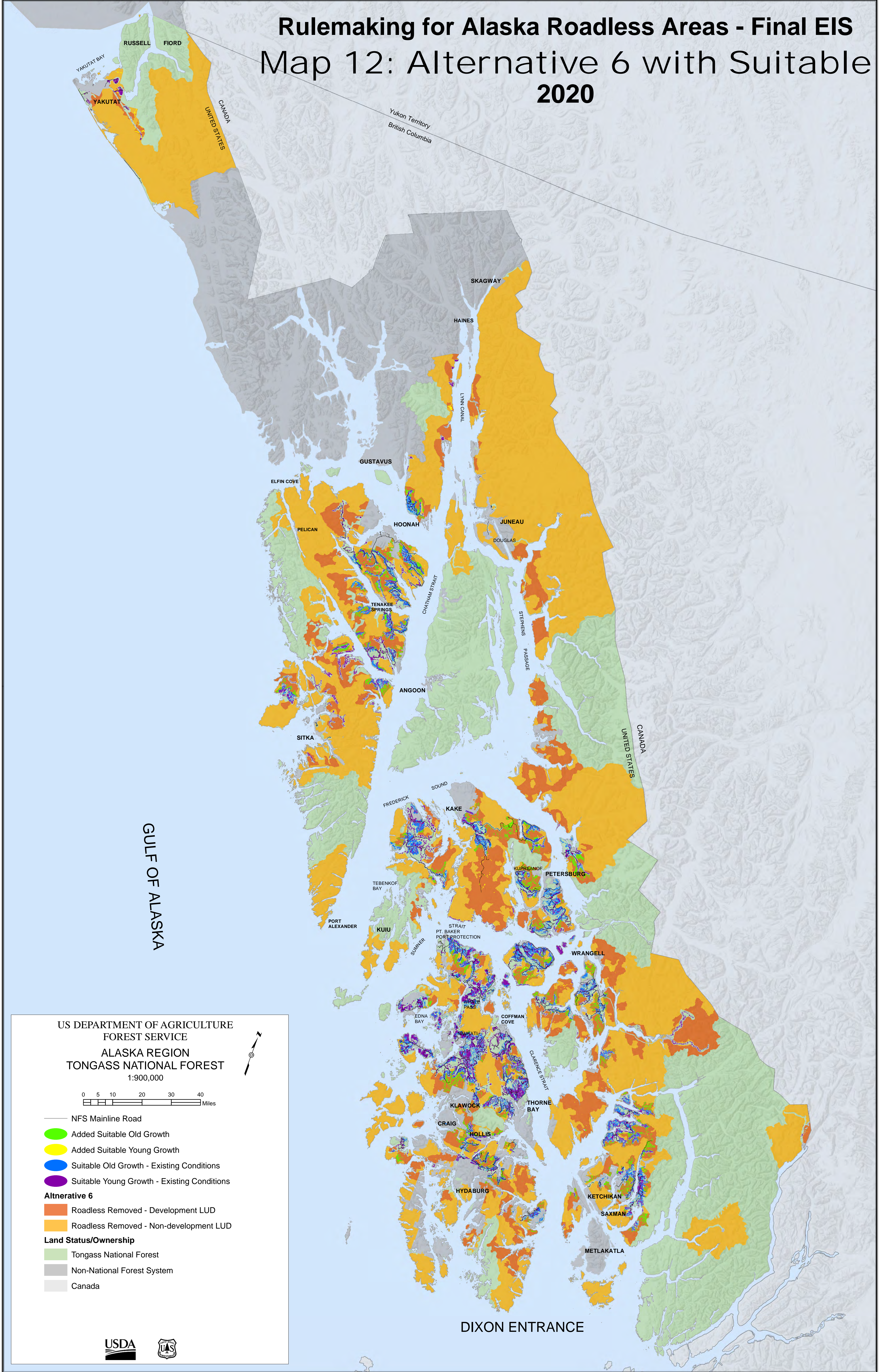
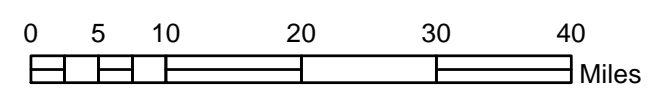


# Rulemaking for Alaska Roadless Areas - Final EIS

## Map 12: Alternative 6 with Suitable 2020



US DEPARTMENT OF AGRICULTURE  
FOREST SERVICE  
ALASKA REGION  
TONGASS NATIONAL FOREST  
1:900,000



- NFS Mainline Road
- Added Suitable Old Growth
- Added Suitable Young Growth
- Suitable Old Growth - Existing Conditions
- Suitable Young Growth - Existing Conditions

**Alternative 6**

- Roadless Removed - Development LUD
- Roadless Removed - Non-development LUD

**Land Status/Ownership**

- Tongass National Forest
- Non-National Forest System
- Canada

