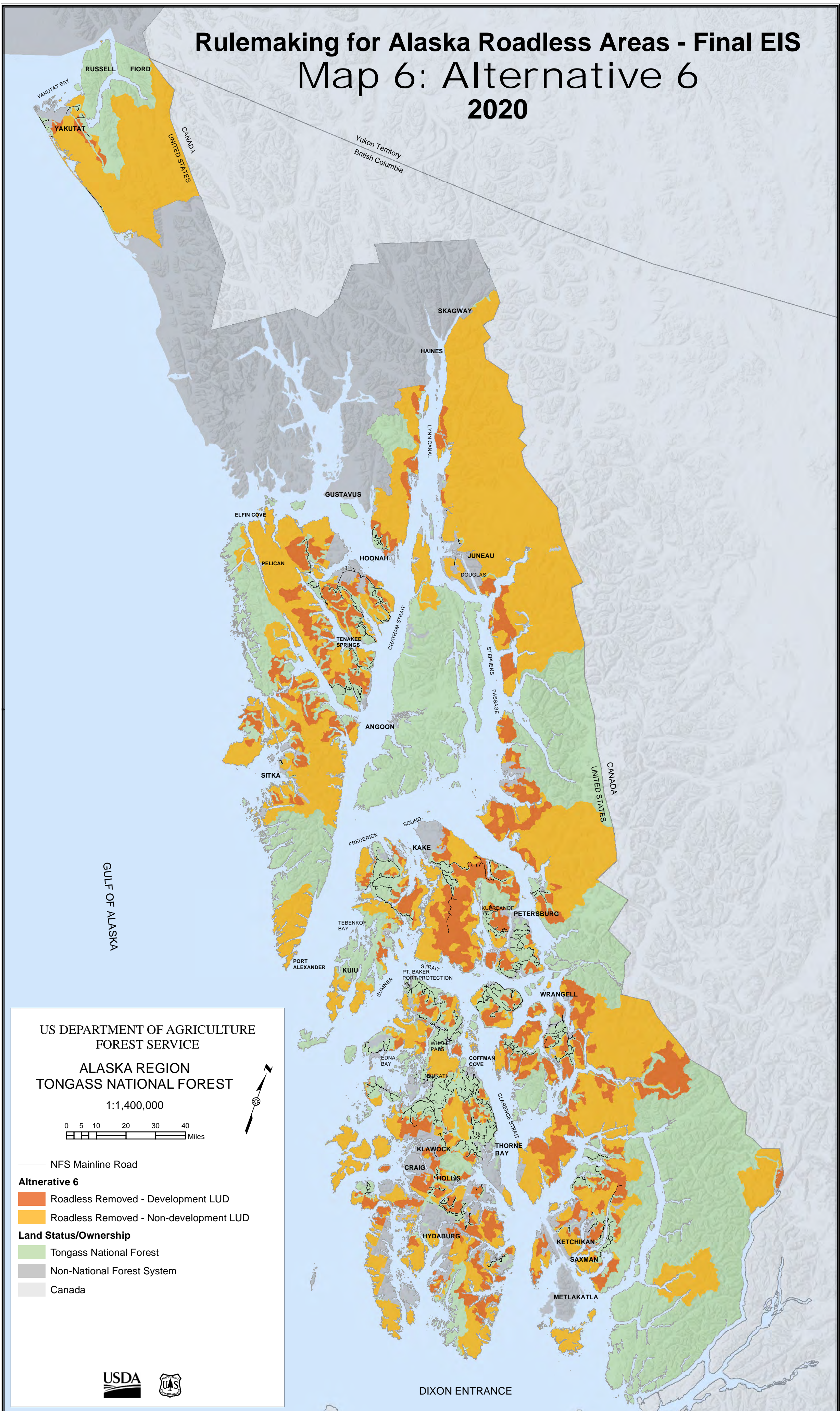


# Rulemaking for Alaska Roadless Areas - Final EIS

## Map 6: Alternative 6

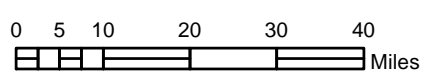
### 2020



US DEPARTMENT OF AGRICULTURE  
FOREST SERVICE

ALASKA REGION  
TONGASS NATIONAL FOREST

1:1,400,000



— NFS Mainline Road

**Alternative 6**

- Roadless Removed - Development LUD
- Roadless Removed - Non-development LUD

**Land Status/Ownership**

- Tongass National Forest
- Non-National Forest System
- Canada



DIXON ENTRANCE