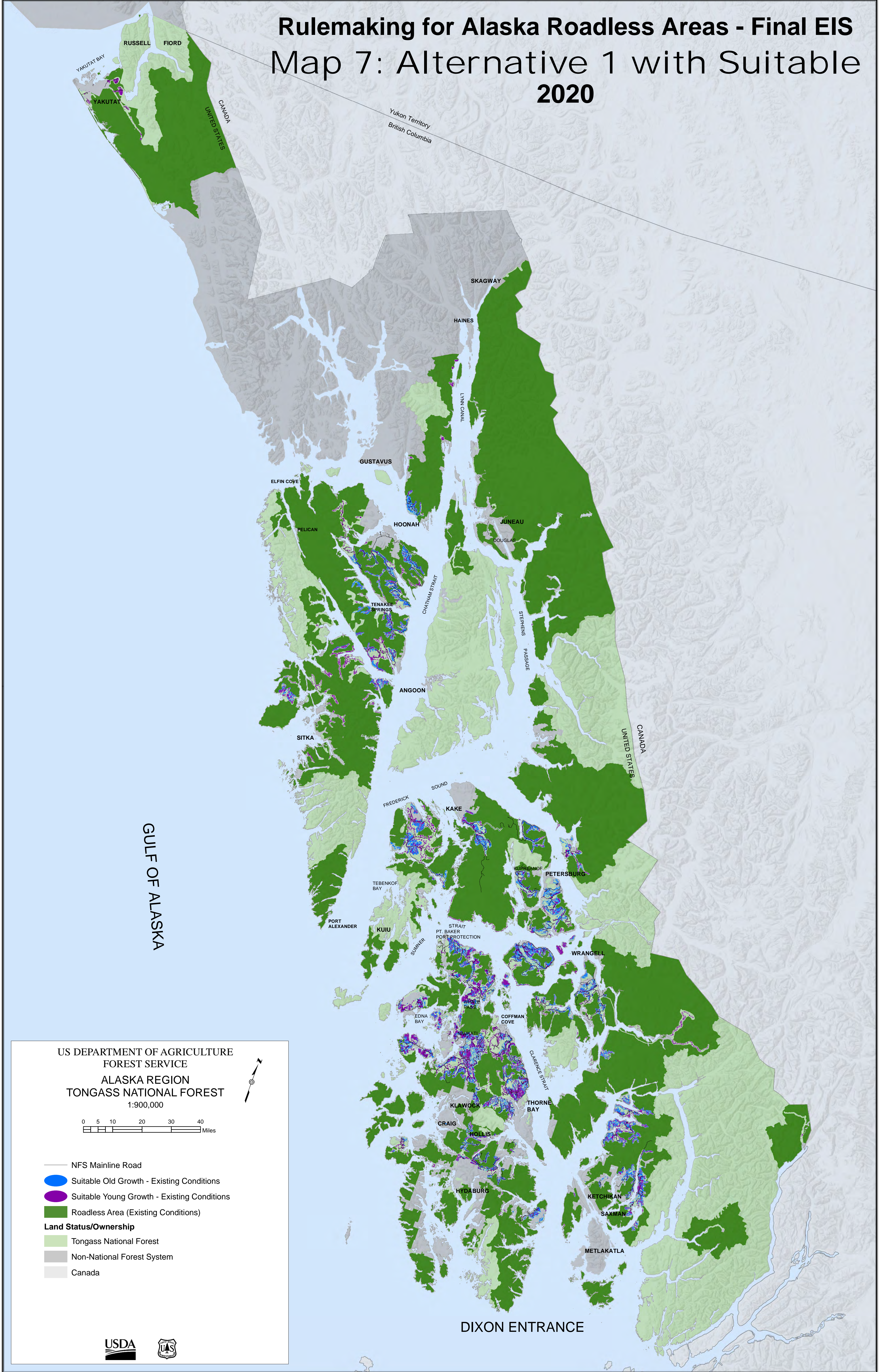
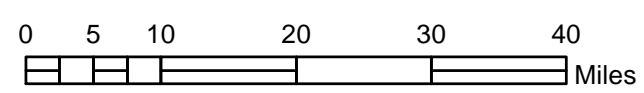


Rulemaking for Alaska Roadless Areas - Final EIS

Map 7: Alternative 1 with Suitable 2020



US DEPARTMENT OF AGRICULTURE
FOREST SERVICE
ALASKA REGION
TONGASS NATIONAL FOREST
1:900,000



- NFS Mainline Road
 - Suitable Old Growth - Existing Conditions
 - Suitable Young Growth - Existing Conditions
 - Roadless Area (Existing Conditions)
- Land Status/Ownership**
- Tongass National Forest
 - Non-National Forest System
 - Canada

