

CITY OF CRAIG  
COUNCIL AGENDA  
JULY 17, 2014  
COUNCIL CHAMBERS 7:00 P.M

**ROLL CALL**

Mayor Dennis Watson, Greg Head, Joni Kuntz, Jim See, Don Pierce, Mike Douville and Jan Storbakken

**CONSENT AGENDA**

*Items listed below will be enacted by one motion. If separate discussion is desired on an item, that item may be removed and placed on the regular meeting agenda.*

- City Council Minutes of May 15, 2014
- City Council Minutes of June 5, 2014
- Introduction and First Reading Ordinance 661, General Obligation Bond Issuance
- Introduction and First Reading Ordinance 662, FY14 Supplemental Budget

**HEARING FROM THE PUBLIC**

- Open for public comment
- Resolution 14-16, Intent to Issue Bonds
- Resolution 14-17, EMS Fees

**REPORTS FROM CITY OFFICIALS**

Mayor  
Administrator  
Treasurer  
Aquatic Manager  
City Clerk  
City Planner  
EMS Coordinator  
Harbormaster  
Police Chief  
Public Works  
Parks and Rec  
Library  
Parks and Public Facilities

**READING OF CORRESPONDENCE**

- UCORE Report for Bokan Mine Project
- APCM June Newsletter
- APCM May Report

CITY OF CRAIG  
JULY 17, 2014  
COUNCIL AGENDA CONTINUED

- Alaska Retirement System
- POW Marathon
- Thank you to CPL and Amy Marshall

**CONSIDERATION OF RESOLUTIONS AND ORDINANCES**

- Resolution 14-16, Intent to Issue Bonds
- Resolution 14-17, EMS Fees

**UNFINISHED BUSINESS**

- Consider appropriation for Craig Ice House repairs

**NEW BUSINESS**

- Award of bid for Solid Waste Collection Vehicle
- POW Health Network Request
- Consider Final Approval, Land Exchange with Chris Piburn
- Consider Ice House Agreement with Seafood Producers Cooperative

**ADJOURNMENT**

CITY OF CRAIG  
COUNCIL MEETING  
THURSDAY MAY 15, 2014

---

**ROLL CALL**

Mayor Dennis Watson called the meeting to order at 7:00 p.m. and the roll was taken. Present were, Jim See, Jan Storbakken, Don Pierce, and Mike Douville. Absent excused were Joni Kuntz and Greg Head.

**Staff present:** Jon Bolling, City Administrator; Joyce Mason, Treasurer; Jessica Holloway, Aquatic Manager; Kassi Bateman, City Clerk; Brian Templin, City Planner; Ron McIntosh, Public Works Director.

**Audience present:** Kim Patotzka, Jack Walsh, Cindy Bennett and Bill Bennett.

**BOARD OF EQUALIZATION**

PIERCE/DOUVILLE

moved to recess the regular meeting and call the Board of Equalization to order.

MOTION CARRIED UNANIMOUSLY

All members present for the regular council meeting were also present for the Board of Equalization meeting.

Charles Horan and Slater Ferguson were present from Horan and Company to review this year's assessments and the reason for the increase in property values across the board. Charles also presented the new software for entering the data from properties in Craig.

SEE/PIERCE

moved to accept the assessor's valuation on Lee Zwaegerman's property of \$519,800.

MOTION CARRIED UNANIMOUSLY

The second assessment appeal was from Shaan Seet Trailer Court. The Assessors recommendation was to leave the assessment as is. James Carle was not present to speak to the appeal. Mike Douville declared a conflict of interest and requested to abstain from voting. The Council was unable to adopt a motion due to inability to achieve four affirmative votes on the appeal. .

PIERCE/DOUVILLE

moved to recess the Board of Equalization meeting until June 5.

MOTION CARRIED UNANIMOUSLY

**CONSENT AGENDA**

**HEARING FROM THE PUBLIC**

Kim Patotzka was present and curious as to why the assessment of property values in Craig has increased when there have been no sales near his property. Charles Horan offered to meet with Mr. Patotzka to discuss the formula for the determination of property values.

## READING OF CORRESPONDENCE

Nothing to discuss.

## CONSIDERATION OF RESOLUTIONS AND ORDINANCES

### 1. Resolution 14-11, Mil Levy

PIERCE/DOUVILLE

moved to adopt Resolution 14-11 setting the 2014 mil levy at 6 mils.

MOTION CARRIED BY ROLL CALL VOTE

### 2. Resolution 14-13, Moorage Rates for Skiffs

PIERCE/DOUVILLE

moved to adopt Resolution 14-13.

Mike is not in favor of passing this resolution, as fishing is one of our main sources of revenue for many residents here. Mike will support a portion of the resolution stating "Transient vessels with skiffs tied alongside should pay the full moorage costs for those skiffs." Mike believes that permanent stall owners should be allowed to have a skiff tied alongside. Jim mentioned that last year when the harbor rates were raised there were certain citizens upset that the skiffs tied alongside were not included in harbor costs. Jim would like to have this resolution put off being voted on until the rest of the council is present. The council voted on the main motion.

ROLL CALL VOTE- SEE, YES; DOUVILLE, NO; STORBAKKEN, NO; PIERCE, YES.

MOTION FAILS.

### 3. Ordinance 660, FY15 Operating Budget

PIERCE/STORBAKKEN

moved to adopt Ordinance 660, FY15 Operating Budget.

Joyce mentioned that the final quotes for employee healthcare are not in yet. The council can pass a supplemental budget later if needed.

MOTION CARRIED BY ROLL CALL VOTE

## UNFINISHED BUSINESS

### 1. Ford Property

Nothing new to discuss.

### 2. Consider approval, Craig City School District FY15 Budget

Jack Walsh was present to speak on the FY15 School District Budget. Jack also introduced Cindy Bennett, replacing Karen Head as finance director. Mr., Walsh was concerned about where the Craig School would be financially at the end of this fiscal year, but the school district ended the year on a positive note financially. Mr. Walsh expressed sincere thanks at the funding the City of Craig provides as well as the in-kind contributions. The School district will be ending the school year with a balance very close to the 10% that the administration strives to leave in the budget.

PIERCE/DOUVILLE

moved to accept the Craig City School District  
FY15 Budget.

MOTION CARRIED UNANIMOUSLY

**NEW BUSINESS**

**3. William Eggen Disabled Veteran Tax Exemption**

PIERCE/STORBAKKEN

moved to approve William Eggen's property tax  
exemption application.

MOTION CARRIED UNANIMOUSLY

**ADJOURNMENT**

DOUVILLE/PIERCE:

moved to adjourn at 8:20 p.m.

MOTION CARRIED

APPROVED \_\_\_\_\_

\_\_\_\_\_  
MAYOR DENNIS WATSON

ATTEST

\_\_\_\_\_  
KASSI BATEMAN, CITY CLERK

CITY OF CRAIG  
COUNCIL MEETING  
THURSDAY JUNE 5, 2014

---

**ROLL CALL**

Mayor Dennis Watson called the meeting to order at 7:00 p.m. and the roll was taken. Present were, Jim See, Jan Storbakken, Joni Kuntz, Don Pierce and Greg Head. Absent excused was Mike Douville.

**Staff present:** Jon Bolling, City Administrator; Joyce Mason, Treasurer; Jessica Holloway, Aquatic Manager; Kassi Bateman, City Clerk; Brian Templin, City Planner; Chaundell Piburn, EMS Coordinator; Ron McIntosh, Public Works Director; Victoria Merritt, Parks and Recreation; Amy Marshall, Librarian; Otis Gibbons, Parks and Public Facilities

**Audience present:** L. Radke.

**BOARD OF EQUALIZATION**

PIERCE/SEE

moved to recess the regular council meeting and reconvene the Board of Equalization meeting.  
MOTION CARRIED UNANIMOUSLY

PIERCE/SEE

moved to accept the Assessors recommendation for the assessed value of the Shaan Seet Trailer Park. Mike Douville declared a conflict of interest and abstained from voting.  
MOTION CARRIED UNANIMOUSLY

KUNTZ/HEAD

moved to adjourn the Board of Equalization meeting and reconvene the regular council meeting.  
MOTION CARRIED UNANIMOUSLY

**CONSENT AGENDA**

The consent agenda was presented, it contained:

- City Council Minutes of May 1, 2015

PIERCE/KUNTZ

moved to approve the consent agenda as written.  
MOTION CARRIED

**HEARING FROM THE PUBLIC**

**REPORTS FROM CITY OFFICIALS**

**Mayor/IFA-** Mayor Watson and Jon were in Washington DC last month. The Army Corps meeting went well; time will tell if the trip made any impact for the City.

**Administrator-** Provided a written report.

**Treasurer-** Jon and Joyce met with Devon Mitchell to discuss the bond for pool improvements. Attorney Cindy Cartilage worked on the previous bond as bond counsel, and as long as the previous work done presents no conflict of interest the City will take Cindy on as legal counsel. Staff will submit a draft memo of resolutions and ordinances later in the month. Mayor Watson mentioned that the IFA has a number for legal counsel if needed. Joyce reported that staff received notification of grant funding for the Ice house and Float Dock projects.

**Aquatic Manager-** Provided a written report, just working on shut down projects.

**City Clerk-** Kassi will be out of town for training/travel the 11-23 of June. The next meeting is scheduled for June 19. Brian mentioned he would like to have DOWL HKM present to the council during that meeting. The July meeting is scheduled for the 3<sup>rd</sup> but as that is fishing season most of the council will be absent. The July meeting will be rescheduled.

**City Planner-** The tsunami siren should be in on Thursday. Pool condition is included in the staff report. JYL assessment in the next two weeks. Craig Street Improvements capital budget item was written in and the city will begin working on street improvements later this year. Jim mentioned that the sidewalk by West Hamilton as well as by the ball field should be top priority with the street improvements. Greg also mentioned the corner by the Forest Service being difficult for maneuvering a bus around.

**EMS Coordinator-** EMS has been busy the past month. Fire/EMS Departments are working together on a campaign for bike safety. This month staff from these departments will be handing out coins for free ice cream to kids wearing helmets as well as handing out coins for free bike helmets to kids not wearing safety gear. Dr. Vaught will be here the end of the month. Ambulance #1 is heading south for repairs.

**Harbormaster-** Provided a written report, was absent from meeting. Mike mentioned that the new dock is wider which means the hauler has less room. Mike would also like see width added to the ramp itself.

**Police Chief-** Provided a written report.

**Public Works-** Provided a written report. RFQ going out for the garbage truck later this month. Ron is working to fine tune the sizes and quantities of cans. Mike asked about the misuse of the burn pit. Ron mentioned putting up cameras, fencing, possibly publicizing the misuse. Mike mentioned the cameras at the harbormaster building being down. R.J. will be giving Daniel his previous set up so that Daniel doesn't have to order new equipment. Should be up soon.

**Parks and Rec-** Provided a written report.

**Library-** Provided a written report. Amy would like to emphasize that she received an extra \$6500 from the State. Summer reading starts Saturday. DVD rental system is in the process of being set up.

**Parks and Public Facilities-** Nothing new to report. Otis will be opening up the Pool roof tomorrow if anyone is interested in taking a look.

**READING OF CORRESPONDENCE**

**CONSIDERATION OF RESOLUTIONS AND ORDINANCES**

**Resolution 14-14, Appointment of Kassi Bateman as City Clerk.**

PIERCE/STORBAKKEN

moved to adopt Resolution 14-14.

MOTION CARRIED UNANIMOUSLY

**Resolution 14-15, FY15 PILT**

PIERCE/HEAD

moved to adopt Resolution 14-15.

MOTION CARRIED UNANIMOUSLY

**UNFINISHED BUSINESS**

**1. Ford Property**

Nothing new to report.

**NEW BUSINESS**

**1. IFA Bridge Loan**

PIERCE/KUNTZ

moved to authorize staff to prepare and execute documents to loan the IFA an amount not to exceed \$50,000, with a full loan repayment date of August 31, 2014.

MOTION CARRIED UNANIMOUSLY

**2. Action on Employee Health Insurance for FY2015**

PIERCE/HEAD

moved to offer Silver and Bronze Select Plans with HSA and to price based on the

MOTION CARRIED UNANIMOUSLY

**3. Harbor write off accounts**

SEE/PIERCE

moved to write off old harbor accounts.

MOTION CARRIED UNANIMOUSLY

**ADJOURNMENT**

DOUVILLE/HEAD:

moved to adjourn at 8:03 p.m.

MOTION CARRIED

APPROVED \_\_\_\_\_


\_\_\_\_\_  
MAYOR DENNIS WATSON

ATTEST \_\_\_\_\_  
KASSI BATEMAN, CITY CLERK



## City of Craig Memorandum

To: City Mayor & City Council

From: Joyce Mason, Treasurer 

Date: July 10, 2014

RE: Pool Bonds

---

With the near completion of the design services from Jensen Yorba Lott, Inc. for the pool's improvements the issue of financing the repairs or expansion needs to be addressed. The original bonds issued in 1995 to build the pool will be paid off in April, 2015. We would like the council to consider issuing a new bond issue for \$2,000,000 to finance the needed repairs for the current Aquatic Center. The annual payment for this issue will be similar to the payments made in the past which were \$120,000 a year.

To begin the process of issuing the bonds certain items must be addressed. The city has to have legal bond counsel of which we had entered into a contract with Cynthia Cartledge of Wohlforth, Brecht, & Cartledge, Anchorage. She was our legal counsel for the original bond issue in 1995 so she is familiar with the city. The contract states legal fees will be \$7500 for the issuance.

The council will need to adopt an ordinance providing for the form of the ballot proposition and specify other details. This ordinance states the city will put the request to issue the bonds on the October 7, 2014 election for the voters to decide if the city can issue the bonds. An ordinance was drafted by Cindy and is on this meeting's agenda.

The council will need to pass a resolution for the intent to issue the general obligation bonds. This resolution is to authorize the bond issue to pay for any expenses made 60 days before the above mentioned ordinance to the date of the issue, which I anticipate to be early 2015. This will be important if the city has to repair the roof before the bonds are issued. The costs of the roof can then be included as allowable costs for the bond proceeds. Issuance costs and legal fees may also be paid with the bond proceeds.

Jon and I have contacted Devin Mitchell, Alaska Bond Bank to have the bank issue the bonds. The Bond Bank combines multiple communities issuing bonds for one large sale to accomplish a better price and lower interest costs. The bank usually has two or three sales a year therefore I anticipate the timing to be early 2015.

To do all the preparation work, issue the bonds, and the follow up will take approximately six to nine months. The city should have the funds from the bond sale to do any major repairs or expansion for the pool by next summer. Of course this all hinges on rather the voters pass the proposition to issue the bonds.

**Recommendation:** Adopt resolution 14-16, Intent to Issue General Obligation Bonds for Pool Improvements and or Expansion.

**CITY OF CRAIG, ALASKA  
ORDINANCE NO 661**

**AN ORDINANCE OF THE CITY OF CRAIG, ALASKA, PROVIDING FOR THE FORM OF THE BALLOT PROPOSITION AND SPECIFYING CERTAIN OTHER DETAILS CONCERNING SUBMISSION TO THE QUALIFIED VOTERS OF THE CITY AT THE GENERAL ELECTION TO BE HELD ON OCTOBER 7, 2014 OF A PROPOSITION FOR THE ISSUANCE OF ITS GENERAL OBLIGATION BOND IN THE AGGREGATE PRINCIPAL AMOUNT OF \$2,000,000 FOR THE PURPOSE OF SECURING FUNDS NECESSARY TO PAY THE COSTS OF DESIGNING, REPAIRING, CONSTRUCTING AND EQUIPPING OF CAPITAL IMPROVEMENTS TO THE CRAIG MUNICIPAL SWIMMING POOL AND RELATED FACILITIES**

**WHEREAS**, the City of Craig, Alaska (the "City") is a first class city and under Section 7 of Article X of the Alaska Constitution and may exercise all powers and functions conferred by law or charter; and

**WHEREAS**, Title 29, Section 47.180(a) of the Alaska Statutes authorizes the City to issue general obligation bonds which are secured by the full faith and credit of the City, provided that such general obligation bonds shall be authorized by the City Council and ratified by the majority of the qualified votes of the City; and

**WHEREAS**, it is necessary and in the best interests of the City and its residents that the City authorize the issuance of a general obligation bond, the proceeds of which will be used to finance the design, repair, construction and equipping of capital improvements to the Craig Municipal Swimming Pool; and,

**NOW, THEREFORE, BE IT ENACTED BY THE CITY COUNCIL, OF THE CITY OF CRAIG, ALASKA:**

**SECTION 1. Authority to Issue Bonds.** The City hereby finds and declares that the best interest of the citizens of the City requires that the City issue its general obligation bond in the aggregate principal amount and not to exceed \$2,000,000 for the purposes of securing funds for payment of capital expenses incurred in the designing, repairing, constructing and equipping of capital improvements to the Craig Municipal Swimming Pool and related work (the "Project"). The City Council hereby authorizes the issuance of a general obligation bond in the principal amount not to exceed \$2,000,000 for the purpose of carrying out the Project.

The City anticipates payment of a portion of the debt service for the bonds from revenues from the swimming pool and sales tax revenues, and by the other sources described in Section 4 of this ordinance.

**SECTION 2. Capital Improvements.** The City shall use the proceeds of the bond herein before authorized for the purpose of financing capital costs of the Project. The cost of all necessary architectural, engineering and other consulting services, inspection and testing, administrative and relocation expenses, land and interests in land, on and off site utilities, if any, costs of issuance of the bond and other costs incurred in connection with the making of the foregoing capital improvements shall be deemed a part of the costs of the Project.

**SECTION 3. Authorization of Bonds.** For the purpose of providing funds necessary to pay the costs of the Project, the City shall issue and sell its general obligation bond in the principal amount not to exceed \$2,000,000. Such bond shall be issued in an amount not exceeding the amount approved by the qualified voters of the City as required by the Constitution of the State of Alaska.

**SECTION 4. Details of Bonds.** The bond provided for in Sections 1, 2 and 3 hereof shall be sold in such amount and at such time or times as deemed necessary and advisable and as permitted by law, shall bear interest at a rate or rates not to exceed the maximum rate permitted by law at the time the bond is sold, and shall mature in such amounts and at such times as authorized by the Council. The exact date, form, terms, maturities, redemption provisions and other matters relating to the issuance and sale of the bond shall be as hereafter fixed by ordinance or resolution of the City Council. The bond shall be issued as a single issue, as a part of a combined issue with other authorized bonds, or in more than one series.

The bond shall be a general obligation of the City, and to the extent not paid from the other sources as determined by the City, including pool revenues and sales tax proceeds as approved by the electorate on October 6, 1992, both principal thereof and interest thereon shall be payable out of annual tax levies to be made upon the taxable properties within the City, without limitation as to rate or amount. The full faith and credit of the City shall be irrevocably pledged for the payment of both the principal and interest of the bond.

**SECTION 5. General Election.** The City Council hereby authorizes and directs the submittal to the qualified voters of the City at the election to be held on October 7, 2014, of a ballot proposition substantially in the following form:

**PROPOSITION NO. 1**

**CITY OF CRAIG MUNICIPAL SWIMMING POOL**

**GENERAL OBLIGATION BOND – NOT TO EXCEED \$2,000,000**

Shall the City of Craig, Alaska, incur debt and issue general obligation bonds in an amount not to exceed \$2,000,000 for the purpose of providing funds to design, repair, equip and construct capital improvements for the City of Craig Municipal Swimming Pool and to pay all costs incidental thereto?

If approved, the bonds will be payable from ad valorem taxes that may be levied without limit as to rate or amount upon real property within the City of Craig. The City of Craig anticipates payment of a portion of the debt service for the bonds from revenues from the swimming pool, sales tax and other revenues. Bonds would mature over a period not to exceed 25 years. This ballot is to be voted upon by all registered voters residing within the city limits of the City.

YES

NO

**SECTION 6. Notice of Election.** The City shall cause a notice of election to be published in accordance with Chapter 2.12 of the Craig Municipal Codes entitled Municipal Elections. The Clerk shall also cause a notice of existing bonded indebtedness to be published at least once a week for three consecutive weeks with the first notice to be published at least 20 days before the date of the election in accordance with AS 28.47.190(b) entitled Notice of Existing Indebtedness.

The Clerk shall cause this ordinance to be posted and made available to the public, in its final form, no later than September 16, 2014 in accordance with all laws of the State of Alaska and the City.

**SECTION 7. Effective Date.** This ordinance shall be effective immediately.

**PASSED AND APPROVED BY THE CITY COUNCIL OF THE CITY OF CRAIG, ALASKA, this \_\_\_\_\_ day of \_\_\_\_\_ 2014.**

\_\_\_\_\_  
Dennis Watson, Mayor

ATTEST: \_\_\_\_\_  
Kassi Bateman, City Clerk

**CITY OF CRAIG, ALASKA  
RESOLUTION 14-16**

**A RESOLUTION DECLARING THE OFFICIAL INTENT TO ISSUE A  
GENERAL OBLIGATION BOND IN THE AGGREGATE PRINCIPAL  
AMOUNT OF NOT TO EXCEED \$2,000,000 TO PAY THE COSTS OF  
DESIGNING, REPAIRING, CONSTRUCTING, AND EQUIPPING  
CAPITAL IMPROVEMENTS TO THE CITY'S MUNICIPAL SWIMMING  
POOL**

**WHEREAS**, the City of Craig, Alaska ("City") owns the municipal swimming pool ("Pool"), located in the City, and available to all residents of the City; and

**WHEREAS**, the City is in the preliminary stages of designing, repairing, constructing and equipping the Pool ("Project") for use by its residents; and

**WHEREAS**, the City intends to issue a tax-exempt general obligation bond to finance costs of the Project, subject to voter authorization.

**NOW, THEREFORE, BE IT RESOLVED BY THE COUNCIL OF THE CITY OF CRAIG,  
ALASKA:**

**SECTION 1. Official Intent.** This resolution is adopted to satisfy the "official intent" requirements of Section 1.150-2 of the Treasury Regulations adopted under the authority of the Internal Revenue Code of 1986, as amended, ("Code") with respect to the Project, as described above. The City reasonably expects to issue up to \$2,000,000 principal amount of a tax-exempt general obligation bond ("Bond") to pay for costs of the Project and related costs which are eligible under the Code. Such costs incurred up to 60 days before the effective date of this resolution will be eligible for reimbursement with proceeds of the Bond. As of the date set forth below, the City reasonably expects that it will issue the Bond and use the proceeds of the Bond as described in this section.

**SECTION 2. Effective Date.** This resolution shall take effect immediately.

**ADOPTED BY THE COUNCIL OF THE CITY OF CRAIG, ALASKA ON THIS \_\_\_\_\_  
DAY OF JULY, 2014**

\_\_\_\_\_  
Dennis Watson, Mayor

ATTEST: \_\_\_\_\_  
Kassi Bateman, City Clerk

(SEAL)

CITY OF CRAIG

ORDINANCE NO. 662

PROVIDING FOR THE ADOPTION OF THE FISCAL YEAR 2014 SUPPLEMENTAL  
OPERATING BUDGET

BE IT ORDAINED BY THE CITY COUNCIL OF THE CITY OF CRAIG:

Section 1. Classification. This ordinance is a non-code ordinance and is not of a general and permanent nature and shall not become a part of the code of the City of Craig, Alaska.

Section 2. Effective Date. This ordinance shall become effective immediately upon adoption.

Section 3. Authorization and Appropriation. The appropriations identified in "Attachment A" hereto are adopted and authorized for the period of July 1, 2013 through June 30, 2014 and are the budget for that period. The Administrator may modify line item expenditures within an authorized appropriation to another line item in any amount which would not annually exceed ten (10) percent or \$10,000, whichever is more.

Section 4. Unexpended Balances. All unexpended balances lapse as of June 30, 2014.

APPROVED this \_\_\_ day of \_\_\_\_\_, 2014.

\_\_\_\_\_  
MAYOR DENNIS WATSON

\_\_\_\_\_  
ATTEST: KASSI BATEMAN, CITY CLERK

## Attachment A

City of Craig  
 FY 2014 Supplemental Budget  
 June 2014

	<u>Revised</u>		<u>Original</u>		<u>Change</u>
	<u>Budget</u>		<u>Budget</u>		
<b>Total Revenues</b>	\$ 3,839,550	\$	3,382,635	\$	456,915
<b><u>01 11 Administration</u></b>					
Expenditures					
Personnel Expenditures	\$ 300,000	\$	260,731		39269
Benefits Expenditures	219,383		213,297		6086
Contract Expenditures	135,000		165,800		(30800)
Travel & Expenditures	15,700		12,930		2770
Materials Expenditures	13,750		12,260		1490
Utilities Expenditures	15,900		16,250		(350)
Repairs & Maint Expenditures	4,300		2,500		1800
Other Expenditures	28,104		29,504		(1400)
Capital & Debt Expenditures	23,500		0		23500
Total Expenditures	\$ 755,637	\$	713,272	\$	42,365
<b><u>01 25 Aquatic Center</u></b>					
Expenditures					
Personnel Expenditures	\$ 138,300	\$	159,967	\$	(21,667)
Benefits Expenditures	80,654		107,813		(27159)
Contract Expenditures	3,500		3,500		0
Travel & Expenditures	2,700		2,700		0
Materials Expenditures	22,100		22,100		0
Utilities Expenditures	113,200		137,200		(24000)
Repairs & Maint Expenditures	11,500		7,000		4500
Other Expenditures	8,410		6,810		1600
Capital & Debt Expenditures	151,658		149,658		2000
Total Expenditures	\$ 532,022	\$	596,748	\$	(64,726)
<b><u>01 12 Council</u></b>					
Expenditures					
Personnel Expenditures	\$ 16,250	\$	14,700	\$	1,550
Benefits Expenditures	44,078		42,772		1,306
Contract Expenditures	1,000		2,500		(1,500)
Travel & Expenditures	12,800		5,650		7,150
Materials Expenditures	1,000		150		850
Utilities Expenditures	0		0		0
Repairs & Maint Expenditures	0		0		0
Other Expenditures	100		715		(615)
Capital & Debt Expenditures	0		0		0
Total Expenditures	\$ 75,228	\$	66,487	\$	8,741

City of Craig  
 FY 2014 Supplemental Budget  
 June 2014

	<u>Revised</u>		<u>Original</u>		<u>Change</u>
	<u>Budget</u>		<u>Budget</u>		
<b><u>01 17 EMS</u></b>					
Expenditures					
Personnel Expenditures	\$ 73,648	\$	48,348	\$	25,300
Benefits Expenditures	48,060		43,715		4,345
Contract Expenditures	6,100		3,400		2,700
Travel & Expenditures	9,600		6,500		3,100
Materials Expenditures	14,250		13,250		1,000
Utilities Expenditures	5,800		2,700		3,100
Repairs & Maint Expenditures	6,250		7,425		(1,175)
Other Expenditures	2,150		2,660		(510)
Capital & Debt Expenditures	0		0		0
Total Expenditures	\$ 165,858	\$	127,998	\$	37,860
<b><u>Facilities &amp; Parks</u></b>					
Expenditures					
Personnel Expenditures	\$ 111,200	\$	108,433	\$	(9,248)
Benefits Expenditures	50,748		51,322		(401)
Contract Expenditures	5,100		7,200		(3,600)
Travel & Expenditures	1,850		0		0
Materials Expenditures	10,600		9,800		0
Utilities Expenditures	15,500		14,600		0
Repairs & Maint Expenditures	6,500		6,500		0
Other Expenditures	10,133		10,133		(2,001)
Capital & Debt Expenditures	0		11,000		(1,500)
Total Expenditures	\$ 211,631	\$	218,988	\$	(16,750)
<b><u>01 18 Fire Department</u></b>					
Expenditures					
Personnel Expenditures	\$ 1,830	\$	1,830	\$	-
Benefits Expenditures	2,141		5,702		(3,561)
Contract Expenditures	6,450		6,450		0
Travel & Expenditures	0		4,200		(4,200)
Materials Expenditures	1,950		1,400		550
Utilities Expenditures	4,800		4,800		0
Repairs & Maint Expenditures	2,000		2,000		0
Other Expenditures	4,000		4,000		0
Capital & Debt Expenditures	\$ 13,100	\$	1,600		11,500
Total Expenditures	\$ 36,271	\$	31,982	\$	4,289



## Attachment A

City of Craig  
 FY 2014 Supplemental Budget  
 June 2014

	<u>Revised</u>		<u>Original</u>		<u>Change</u>
	<u>Budget</u>		<u>Budget</u>		
<b><u>01 19 Library</u></b>					
Expenditures					
Personnel Expenditures	\$ 60,000	\$	51,173	\$	8,827
Benefits Expenditures	40,521		38,791		1,730
Contract Expenditures	0		0		0
Travel & Expenditures	235		235		0
Materials Expenditures	10,850		9,850		1,000
Utilities Expenditures	6,800		6,800		0
Repairs & Maint Expenditures	1,000		1,000		0
Other Expenditures	803		803		0
Capital & Debt Expenditures	15,000		10,000		5,000
Total Expenditures	\$ 135,209	\$	118,652	\$	16,557
<b><u>01 13 Planning</u></b>					
Expenditures					
Personnel Expenditures	\$ 43,800	\$	43,283	\$	517
Benefits Expenditures	37,407		42,804		(5,397)
Contract Expenditures	250		0		250
Travel & Expenditures	500		500		0
Materials Expenditures	500		1,550		(1,050)
Utilities Expenditures	0		0		0
Repairs & Maint Expenditures	0		0		0
Other Expenditures	220		1,220		(1,000)
Capital & Debt Expenditures	0		0		0
Total Expenditures	\$ 82,677	\$	89,357	\$	(6,680)
<b><u>01 16 Police</u></b>					
<b><u>Expenditures</u></b>					
Personnel Expenditures	\$ 486,818	\$	503,907	\$	(17,089)
Benefits Expenditures	285,872		304,612		(18,740)
Contract Expenditures	2,400		1,000		1,400
Travel & Expenditures	3,600		2,000		1,600
Materials Expenditures	43,830		41,830		2,000
Utilities Expenditures	24,200		24,400		(200)
Repairs & Maint Expenditures	5,000		5,000		0
Other Expenditures	17,700		16,805		895
Capital & Debt Expenditures	10,800		3,400		7,400
Total Expenditures	\$ 880,220	\$	902,954	\$	(22,734)

## Attachment A

City of Craig  
 FY 2014 Supplemental Budget  
 June 2014

	<u>Revised</u> <u>Budget</u>		<u>Original</u> <u>Budget</u>		<u>Change</u>
<b><u>01 15 Public Works</u></b>					
Expenditures					
Personnel Expenditures	\$ 99,771	\$	99,771	\$	-
Benefits Expenditures	57,457		62,447		(4,990)
Contract Expenditures	500		500		0
Travel & Expenditures	1,175		1,175		0
Materials Expenditures	17,300		19,100		(1,800)
Utilities Expenditures	20,000		15,600		4,400
Repairs & Maint Expenditures	7,500		6,700		800
Other Expenditures	4,650		5,050		(400)
Capital & Debt Expenditures	4,000		2,000		2,000
Total Expenditures	\$ 212,353	\$	212,343	\$	10
<b><u>01 24 Recreation</u></b>					
Expenditures					
Personnel Expenditures	\$ 38,803	\$	37,942	\$	3,500
Benefits Expenditures	26,827		28,452		(345)
Contract Expenditures	3,500		3,500		0
Travel & Expenditures	0		0		0
Materials Expenditures	6,150		1,000		3,750
Utilities Expenditures	19,900		23,900		(4,000)
Repairs & Maint Expenditures	800		800		0
Other Expenditures	1,002		2,035		(2,098)
Capital & Debt Expenditures	1,000		0		(2,651)
Total Expenditures	\$ 97,982	\$	97,629	\$	(1,844)
Total Departments Expenditures	\$ 3,185,088	\$	3,176,410	\$	(2,912)
Net Assets before Transfers	\$ 654,462	\$	206,225	\$	459,827
Transfers					
School	(300,000)		(300,000)		0
To Balance Enterprise Fund	(11,853)		17,586		(29,439)
To Capital Harbor Fund	(75,000)		0		(75,000)
Endowment Fund	120,000		120,000		0
Hatchery	(35,000)		(35,000)		0
Transfer to Equipment Reserve	(352,609)		(8,811)		(343,798)
Net Assets	\$ -	\$	-	\$	0

City of Craig  
FY 2014 Supplemental Budget  
June 2014

	<u>Revised</u> <u>Budget</u>	<u>Original</u> <u>Budget</u>	<u>Change</u>
<b><u>Enterprise Fund</u></b>			
Revenues	\$ 2,887,020	\$ 1,512,006	\$ 1,375,014
Expenses	\$ 2,898,873	\$ 1,494,420	\$ 1,404,453
Net Income(Loss)	\$ (11,853)	\$ 17,586	\$ (29,439)
Transfer from General Fund	\$ 11,853	\$ (17,586)	
<b><u>Garbage</u></b>			
<b>Total Revenues</b>	\$ 325,000	\$ 338,000	\$ -
<u>Expenditures</u>			
Personnel Expenditures	48,985.00	50,822.00	(1,837.00)
Benefits Expenditures	32,102.00	38,104.00	(6,002.00)
Contract Expenditures	230,000.00	230,000.00	0.00
Travel & Expenditures	0.00	0.00	0.00
Materials Expenditures	9,000.00	6,700.00	2,300.00
Utilities Expenditures	0.00	0.00	0.00
Repairs & Maint Expenditures	5,149.00	7,149.00	(2,000.00)
Insurance & Other Expenditures	4,125.00	3,225.00	900.00
Capital & Debt Expenditures	1,000.00	2,000.00	(1,000.00)
Total Expenditures	330,361.00	338,000.00	(7,639.00)
Excess Revenue Over (Under) Expenditures	\$ (5,361)	\$ -	\$ 7,639
<b><u>Harbor</u></b>			
Revenues	\$ 250,550	\$ 258,550	(8,000.00)
<u>Expenditures</u>			
Personnel Expenditures	104,355.00	96,004.00	8,351.00
Benefits Expenditures	72,329.00	71,280.00	1,049.00
Contract Expenditures	5,215.00	5,215.00	0.00
Travel & Expenditures	2,900.00	200.00	2,700.00
Materials Expenditures	16,299.00	18,007.00	(1,708.00)
Utilities Expenditures	29,100.00	29,100.00	0.00
Repairs & Maint Expenditures	43,270.00	7,500.00	35,770.00
Insurance & Other Expenditures	27,175.00	11,690.00	15,485.00
Capital & Debt Expenditures & Transfers	0.00	19,554.00	(19,554.00)
Total Expenditures	300,643.00	258,550.00	42,093.00
Excess Revenue Over (Under) Expenditures	\$ (50,093)	\$ -	\$ (50,093)

## Attachment A

City of Craig  
 FY 2014 Supplemental Budget  
 June 2014

	<u>Revised Budget</u>	<u>Original Budget</u>	<u>Change</u>
<b><u>JTB Industrail Park</u></b>			
Total Revenues	\$ 1,687,470	\$ 339,456	<u>1,348,014.00</u>
<b><u>Expenditures</u></b>			
Personnel Expenditures	51,802.00	73,896.00	(22,094.00)
Benefits Expenditures	12,946.00	38,862.00	(25,916.00)
Contract Expenditures	395.00	175.00	220.00
Travel & Expenditures	0.00		0.00
Materials Expenditures	5,498.00	4,498.00	1,000.00
Utlities Expenditures	43,000.00	30,000.00	13,000.00
Repairs & Maint Expenditures	19,000.00	6,950.00	12,050.00
Insurance & Other Expenditures	11,564.00	11,564.00	0.00
Capital & Debt Expenditures & Transfers	1,469,860.00	156,190.00	1,313,670.00
Total Expenditures	<u>1,614,065.00</u>	<u>322,135.00</u>	<u>1,291,930.00</u>
Excess Revenue Over (Under) Expenditures	<u>\$ 73,405</u>	<u>\$ 17,321</u>	<u>\$ 56,084</u>
<b><u>Sewer</u></b>			
Total Revenues	\$ 298,000	\$ 287,000	<u>11,000.00</u>
Personnel Expenditures	86,800.00	86,360.00	440.00
Benefits Expenditures	51,718.00	45,556.00	6,162.00
Contract Expenditures	5,500.00	5,500.00	0.00
Travel & Expenditures	600.00	3,000.00	(2,400.00)
Materials Expenditures	6,650.00	9,056.00	(2,406.00)
Utlities Expenditures	35,500.00	40,900.00	(5,400.00)
Repairs & Maint Expenditures	26,000.00	28,000.00	(2,000.00)
Insurance & Other Expenditures	7,100.00	7,631.00	(531.00)
Capital & Debt Expenditures & Transfers	65,497.00	60,997.00	4,500.00
Total Expenditures	<u>285,365.00</u>	<u>287,000.00</u>	<u>(1,635.00)</u>
Excess Revenue Over (Under) Expenditures	<u>\$ 12,635</u>	<u>\$ -</u>	<u>\$ 12,635</u>

City of Craig  
 FY 2014 Supplemental Budget  
 June 2014

	<u>Revised</u> <u>Budget</u>	<u>Original</u> <u>Budget</u>	<u>Change</u>
<b><u>Ward Cove Cannery</u></b>			
Revenues	\$ 4,000	\$ 7,500	(3,500.00)
<u>Expenditures</u>			
Personnel Expenditures	8,500	0	8,500
Benefits Expenditures	0	0	0
Contract Expenditures	500	2,000	(1,500)
Travel & Expenditures	0	0	0
Materials Expenditures	300	300	0
Utilities Expenditures	6,500	2,100	4,400
Repairs & Maint Expenditures	3,500	500	3,000
Insurance & Other Expenditures	335	335	0
Capital & Debt Expenditures & Transfers	2,000	2,000	0
Total Expenditures	<u>21,635</u>	<u>7,235</u>	<u>14,400</u>
Excess Revenue Over (Under) Expenditures	<u>(17,635)</u>	<u>265</u>	<u>(17,900)</u>
 <b><u>Water</u></b>			
Total Revenues	322,000	281,500	40,500
<u>Expenditures</u>			
Personnel Expenditures	120,800	104,878	15,922
Benefits Expenditures	66,292	53,099	13,193
Contract Expenditures	4,400	8,000	(3,600)
Travel & Expenditures	4,200	2,190	2,010
Materials Expenditures	65,000	37,258	27,742
Utilities Expenditures	52,400	49,600	2,800
Repairs & Maint Expenditures	7,000	4,500	2,500
Insurance & Other Expenditures	8,275	7,275	1,000
Capital & Debt Expenditures	18,437	14,700	3,737
Total Expenditures	<u>346,804</u>	<u>281,500</u>	<u>65,304</u>
Excess Revenue Over (Under) Expenditures	<u>\$ (24,804)</u>	<u>\$ -</u>	<u>\$ (24,804)</u>

**CITY OF CRAIG  
MEMORANDUM**

To: Mayor Watson and City Council Members  
From: Chaundell Piburn, City EMS Coordinator  
Joyce Mason, City Treasurer  
Date: July 7, 2014  
RE: EMS Additional service fees

---

I would like the council to consider the attached changes to the EMS service fees.

I would like to include supplies and equipment left with patients on our treat & release calls.

I would like to increase our BLS emergent call fee from \$475.00 to \$525.00

I would like to increase our ALS emergent call fee from \$675.00 to \$725.00

I would like to include a basic blood draw fee of \$75.00

I would like to have the option to include supplies damaged or replaced in addition to my base rates for calls at the current replacement cost. In most cases, our base fees cover standard supplies it is rare circumstances that I feel I should be charging the additional supplies to the patient.

I would like to include a post mortem fee to transport our deceased patients to the ferry. This fee includes the round trip fee for the coffin only on the IFA, and transport trip to and from the ferry in Hollis.

Recommended Motion: Move to approve Resolution 14-17, EMS amended fee schedule.

CITY OF CRAIG  
RESOLUTION NO. 14-17

**AMENDED REVISION OF RATE STRUCTURE FOR VARIOUS  
EMERGENCY MEDICAL SERVICES (EMS)**

**WHEREAS**, the City of Craig provides fee for service emergency medical services, and;

**WHEREAS**, the fee schedule for emergency medical services shall provide revenue to the city to offset reasonable service costs,

**NOW THEREFORE BE IT RESOLVED** by the Craig City Council that the attached, amended, rate structure is adopted effective July 17, 2014.

APPROVED \_\_\_\_\_

\_\_\_\_\_  
MAYOR, DENIS WATSON

ATTEST \_\_\_\_\_  
KASSI BATEMAN, CITY CLERK

ATTACHEMENT  
RESOLUTION 14-17  
AMENDED REVISION OF RATE STRUCTURE

**New fee scale:**

1. Basic Treatment & release base rate (175.00) plus supplies or equipment left with patient)	175.00
2. Basic calls for service, with transport BLS or non-emergent or scheduled	375.00
3. Basic call for service, with transport BLS, emergent	525.00
4. Advance Life Support ALS, Level One	575.00
5. Advance Life Support ALS, Level One, Emergency	725.00
6. Advance Life Support ALS, Level Two	800.00
7. Specialty Care Transport	800.00
8. Blood Draw or specialty service fee	75.00
9. Extra Attendant fee	50.00
10. Stand by wait time for ambulance (Per half hour)	30.00
11. Round trip fee in addition to initial transport	100.00
11. Mileage per loaded mile	7.00
12. Persons DOA, deceased on arrival	0.00
13. Supplies damaged or replaced	Current replacement value
14. Post Modem transport fee	320.00



# CITY OF CRAIG MEMORANDUM

To: Craig City Council  
From: Jon Bolling, City Administrator  
Date: July 11, 2014  
RE: July Staff Report

---

## **1. POWCAC Update**

A subcommittee of POWCAC continues to work on a draft borough charter. The group met on July 7 and produced a near-final draft. The full POWCAC membership will talk about the draft at the next POWCAC meeting, set for July 22 in Whale Pass. I expect a lot of comment from the membership on charter items such as apportionment of proposed assembly and school board seats, borough powers, and other topics. Also on the July agenda is a report from Alaska DOT on the draft SE Alaska Transportation Plan, a discussion on legislation affecting the Power Cost Equalization Program and a discussion of use of road funding to maintain USFS roads on POW.

## **2. Appeal of AP&T Rate Increase Request**

As the council will recall, a few months ago it directed staff to file an appeal of Alaska Power and Telephone's proposed electrical rate increase petition to the Regulatory Commission of Alaska. I spent some considerable time recently reading many of the documents submitted by Alaska Power and Telephone to the Alaska Attorney General's office regarding the proposed rate increase. Much of the information submitted is very technical and unique to the electric utility industry. I made some suggestions to city attorney Bob Blasco on areas where the city could focus its comments. Bob subsequently contacted the state attorney working on the case with our comments. That attorney provided some helpful feedback. However while the AG's office will address some of the areas of concern to the city as to the proposed increase, it will likely be up to us to make a separate case to the RCA as to the impact the rate increase will have locally. The city will have to decide soon to what extent we wish to call witnesses or present evidence to the full RCA when it conducts its hearing on AP&T's request.

## **3. Port St. Nicholas King Salmon Cost Recovery**

Mike Bobo continues to gillnet at Port St. Nicholas in an attempt to catch king salmon returning to the bay from the city's terminal king salmon fishery there. I do not have a good accounting yet of the total fish caught or revenues collected from his efforts to date, although I get the sense that the effort is likely to result in a return similar to 2013, which netted the POW Hatchery Association about \$5,000. Mr. Bobo has sold the fish both locally and to a commercial buyer in Wrangell. The city's annual cash support payment to the hatchery for the king salmon project is reduced by the amount produced in the cost recovery fishery, so the greater the value of the cost recovery harvest, the fewer City of Craig general fund dollars get paid to POWHA. The hatchery staff will provide the city a full accounting of the fish caught and revenues collected through the cost recovery program.

On a related note, I spoke with POWHA manager Jeff Lundberg recently about the city's FY 2015 payments to POWHA. Because POWHA has access to grant funding this year for its operations at the Port St. Nicholas king salmon site, POWHA will set aside the payments it receives in the coming year from the City of Craig into its reserves for future use on the king salmon program.

#### **4. POW Resource Advisory Committee**

The POW RAC met yesterday to make recommendations to the US Forest Service on the use of \$286,000 in special projects funds provided through the Secure Rural Schools program. I am a member of the RAC and attended the meeting. The group agreed to fund six projects. Those projects are

1. POW Forest Service road maintenance: \$150,000
2. Dog Salmon Creek restoration work: \$18,000
3. One Duck Trail drainage rehabilitation: \$60,000
4. Cutthroat Road bridge replacement: \$14,000
5. Historic Salt Chuck Mine interpretive Area: \$34,000
6. Landslide stabilization: \$4,000.

The road maintenance project will rely on input from the island's communities to give direction to the Forest Service on which roads to focus maintenance, in order to preserve access to the most important local roads.

#### **5. Craig Court**

We received a request from the Craig District Court to hold its daily court calendar out of the city council chambers this week. We accommodated their request and while we have seen quite a bit of foot traffic into city hall as a result, the accommodation has not been a difficult one. My understanding is that the court plans to move to other temporary quarters next week, perhaps at the CTA Tribal Hall.

#### **6. Ongoing Projects**

Staff is preparing to finalize the planning phase of several projects, including the North Fork Lake Dam raising project, water and wastewater master planning rewrite projects, and the Craig Aquatic Center condition assessment (with an emphasis on replacing or repairing the building's roof). Work on the design for the new fire/EMS building design is complete and awaits construction funding. The general contractor portion of the new boat launch ramp float installation is complete, and now awaits final installation of water service to the fish cleaning tables and lighting. Work on the ice house bin expansion is still set to begin September 15. Staff will begin a review of the engineered design for Phase IV paving of city streets, which I hope will be ready for construction in 2015. The Port St. Nicholas water main replacement project is under review by staff at the Alaska Department of Environmental Conservation, and once their approval to construct is received the project may proceed to bid. Parks and Public Facilities staff is rebuilding the hydronic heating system here at city hall. The Craig Fire, Police, and Public Works Departments are preparing for a visit from the ISO representative next month for an inspection that will set the fire insurance rating for Craig for the next five years.

These and other projects remain active for city staff.

#### **7. Travel Schedule - 2014**

July-December: Three to four trips to Juneau, mostly at CCS expense.

August: Personal travel, approximately two weeks.

September 17-19: SE Conference annual meeting in Wrangell.

If the council has questions regarding these items feel free to contact me anytime.

## Memorandum

To: Craig City Council  
From: Jessica Holloway, Aquatic Center Manager  
Re: June 2014 Report  
Date: July 9<sup>th</sup> 2014

The Aquatic Center conducted its yearly shutdown between June 1st and June 19<sup>th</sup>. During that time the pool and maintenance staff completed numerous projects, such as repainting the locker room floors, removing and installing new grout in the kiddie pool and installing the new plastic lockers. These lockers replace our old metal lockers that were worn and rusty. During the shutdown period we also did the normal yearly cleaning of the gutters, a full scrub of the fitness room and sauna/hot tub area, lobby, along with repainting the bottom of the pool and the deck.

Otis replaced a piece of the bumper of the great with a stainless steel plate to avoid more damage from the handicap stairs. The area had been broken from the removal of the stairs very early after installation. We are hoping that this will fix the issue.

After much consideration we opted to remove the cement planter box that was outside the front door because it was cracked and being held together with a banding strap. In its place we have a nice clear spot where we have put a bike rack.

Melissa "Kristy" McKenzie was hired for the Head Lifeguard position. She has been a great asset to the pool. She is hard working and very reliable, the patrons and staff all like her and she gets along well with them as well. As of this date we are still in trying to fill the vacant Lifeguard III/Head Coach position. We have had a couple applicants and I will update you next month on any progress with them.

If you have any questions for the pool please feel free to e-mail us at [pool@craigak.com](mailto:pool@craigak.com) or call at 826-2794.

Have a great Summer Everyone,  
Jessica Holloway  
Aquatic Center Manager

# City of Craig

## Memorandum

Date: July 8, 2014  
To: Mayor Watson and Council  
From: Kassi Knock, City Clerk  
Re: June Report

---

It's almost election time again! This year should be busy with the Primary, Municipal and General Elections. As I mentioned in my last report we have elections training with our regional election supervisor the 17<sup>th</sup>. The council seats up this year are Greg Head and Don Pierce. School Board seats are Michael Kampnich and Robert Claus. Declaration of Candidacy filing period begins August 8.

### Training Report

Sunday 6/15

#### **Intergenerational Communication-Maura Mae**

This course communicated a topic I hadn't thought about much in the workplace. After listening to the instructor and presentation I was able to gain a better understanding of the generational gaps within the workplace as well as the best way to approach the generational differences. This course gave me the information needed to handle public requests and conflicts, as well as associate and council interactions.

Monday 6/16

#### **Leadership Fire: How to Get Extraordinary Things Done Consistently and Manage Competing Priorities- Jane Dwyer Bang**

This course was very informative, and was an opportunity for self-reflection. I haven't ever thought of my position in the city as a "leadership" role. After attending this course I realized that it is possible to be an effective leader without working in a managerial capacity. Throughout the day we examined our priorities, goals, dreams and realistic expectations for our position and life in general. This course made me think about my role in the city and how I can improve my leadership skills and hopefully inspire others that don't work as a supervisor to be leaders in their own right as well.

Tuesday 6/17

#### **Managing Negativity in the Workplace- Janice Corbin**

This course provided me with the information needed to better handle negative individuals within the office. It also gave me the opportunity to really observe the underlying causes for the negativity and how to handle difficult situations while maintaining composure and productivity. This course will be beneficial for use in my daily life, as working with the public has a tendency to be tense sometimes. There is some diversity in the office in the moods and attitudes and hopefully I can transfer some of my knowledge from this course to my professional career.

# City of Craig

## Memorandum

### **Meeting the Challenges of an Ever-Changing Workplace- Janice Corbin**

It was valuable for me to look at what changes have happened within the city and the reactions by the employees or public that the change affected. Examining the way changes were brought about, what could have been done differently, and what may work better next time gave me the data needed to help with easing employees and the public through a transition more smoothly.

Wednesday 6/18

### **Decision Making-Cindy Colvin**

This course was constructive in that I was able to analyze what kind of a decision maker I am, how challenging it is for me to make a decision and how I can make better decisions. We looked at the six decision making styles and in groups came up with scenarios where each decision making style may be beneficial and when it may have a negative effect. I tend to be in the middle in the difficulty level of my decision making, and this course was motivating because it gave you a better understanding of what kind of decisions there are and who needs to be involved in the different decision making processes. I also tend to make decisions based largely on emotion, which can be a good and bad thing. I plan to use the information I learned in this course to advance on my decision making skills.

### **Media Relations- Marie Stake**

In all honesty this course wasn't the best. The instructor had a great sense of humor, a lot of stories of Kirkland media bloopers, what not to do when dealing with the media and how to run interference in a crisis, but she didn't offer much advice as far as the being the public representative for your municipality is concerned. It was a three hour course with some slides showing media coverage around Washington State, and in Kirkland as well. It was great catching up on what has been happening in municipalities around WA, but this course didn't apply much to my position as City Clerk.

Thursday 6/19

### **Communicate Like a Pro- Michael Buschmohle**

This course was most constructive for me. I learned so much about the style of communication I use and what needs to change in my approach to individuals whether in person or via email. It was interesting to learn about the tones of your voice and how slight changes can make all the difference in the way the statement is perceived. The ways that questions are asked or comments are made makes a big difference in how they will be accepted or answered. Rephrasing questions may help to calm an upset customer, or comfort someone who is looking for a cemetery plot all the while being respectful and efficient.

Friday 6/10

### **Managing your Emotions Under Pressure- Marilyn McCabe-Love**

This course was interesting, but mainly because the instructor was very entertaining. It was a great course to end the institute with because it was low stress, and easy to follow. The instructor didn't use slides or any type of presentation material, and much of her instruction was based on her history and different situations she had encountered as a mediator. The instructor provided

# City of Craig

## Memorandum

some good tips for managing emotions, but there weren't many that I didn't know already. I feel like I manage my emotions well in my personal and professional life, so this course was interesting to listen to, but didn't offer much in the way of information I could transfer back home.

This institute as always was amazing. It was a great experience to be able to go and network with other clerks as well as attend the courses provided by the director. I appreciate the opportunity to participate in the institute the last two years, and am extremely thankful to have completed all the requirements for my CMC. Thank you!

## CITY OF CRAIG MEMORANDUM

To: Craig Mayor and City Council  
From: Brian Templin, City Planner  
Date: July 11, 2014  
RE: Planning Department Staff Report

---

1. Firehall Replacement. We have electronic copies of the final design from JYL. They are sending hard copies of the design sets, specifications and product sheets as required in the contract with them. If any council member is interested in reviewing the plans please give me a call or stop by my office any time.
  
2. Water/Wastewater Master Planning. DOWL HKM is continuing to work through the master plan updates. We have received all draft memos and are currently reviewing the overall mapping final draft, the capital improvement project memo and a memo detailing the fire flow based on existing conditions and hypothetical conditions of reactivating the Spruce Street tank and/or installing a new tank near the high school. Ron and I met with DOWL on July 9<sup>th</sup> to discuss these memos and capital projects. One of the capital projects that we spent some time discussing was the possibility of reactivating the Spruce Street tank. Currently there is some funding available through ANTHC for upgrades to the tank to put it back in service. We spent some time with DOWL talking about the capital improvements required to do this and the relation to the funding from ANTHC. Ron and I will provide more information and recommendations as we refine this project.
  
3. Tanner Crab/Salmonberry Subdivision. All work required by the city is complete in the two subdivisions. I have been working with buyers as they start to develop the lots. Currently we still have three lots available for sale at Salmonberry Subdivision (Lot 2 - \$37,100, Lot 3 - \$86,100 and Lot 4 – \$91,600). There has been some interest, particularly in Lot 3 but no applications or earnest payments have been made. The current appraisals are dated October 30, 2014 and are valid until October 30, 2104. I will continue to promote the lots locally for sale but am open to suggestions on how to expand our sales potential before the appraisals expire. We can continue to advertise the lots for sale after October 20, 2014 but the municipal code requires us to make sales based on a market value appraisal no more than 12 months old. Some options for continuing or expanding the sale market are:
  - a. Listing the properties with one or more realtors. This would make the sale process more complicated and would expose the city to additional costs including some portion of closing costs and commission to the realtor that may be 5-10% of the property value. We could choose to increase the sale price of the lots to cover this cost. If we list through a realtor and increase the price of the lots we may consider removing the development surcharge and rebate to simplify closing and to reduce the overall cost without reducing the amount paid to the city.
  - b. Advertising on a wider market and still handling the sale internally.

- c. Updating the appraisals after October and continuing to advertise them locally as we have been.

Any comments or suggestions that council member have to increase the likelihood of selling the last three lots would be helpful.

4. Pool Improvements. Jensen Yorba Lott has completed all required site visits and is working on the draft of the condition assessment. Staff has started the process of considering a bond during the upcoming election cycle. The bond would be used to finance repairs, improvements and renovations to the facility. One of the primary concerns that we have about the building is the condition of the existing roof. We met with JYL by teleconference to discuss options and asked them to provide a draft of the structural portion of the report pertaining to the roof and walls for review since this would most likely be one of the first and highest priority projects that we would consider. A copy of the draft report on the roof and walls is attached. We are still reviewing the draft document and plan to meet to discuss a recommended plan of action. This recommendation will be brought back to the council at a future meeting.
5. Capital Project Requests. The governor recently signed the state capital budget. The current capital budget contains three line items related to Craig. This includes:
  - a. \$600,000 for Craig Community Streets (paving)
  - b. \$15,000 for freezer/cooler upgrades at the school
  - c. \$55,000 for emergency communications on Prince of Wales Island

Staff is working with the Department of Commerce, Community and Economic Development on the grants for these projects.

6. Emergency Warning Siren. We have received the siren system and it is currently being stored at the public works shop. I am working with AP&T to install the poles and with a local electrician to complete the wiring of the new sirens. Installation is being funded through the same grant that was used to purchase the sirens. In the meantime I am continuing to work with the state to install Tsunami Evacuation Route and Evacuation Center signs and publish a brochure that will include a map of evacuation routes and Tsunami information (including education about the siren signals).



**Jensen  
Yorba  
Lott  
Inc**



**Architecture**

July 11, 2014

**Interiors**

Brian Templin, City Planner

**Construction  
Management**

City of Craig  
PO Box 725  
Craig, AK 99921

RE: Craig Aquatic Center

Dear Brian:

**1935**  
Founded as  
H.B. Foss Company

Attached are the draft sections of the Condition Survey report for the Aquatic Center related to the roof and the exterior walls. The sections are in three primary categories:

**1945**  
Foss & Malcolm

03 Superstructure – Roof Structure

**1949**  
Foss, Malcolm &  
Olsen

04 Exterior Closure – Exterior Walls

05 Roofing Systems – Roofing

**1956**  
Foss, Olsen & Sands

Within these categories are the related deficiencies that were identified, recommended remedies, options and associated project costs.

**1958**  
Olsen & Sands

The options for repairing the roof include repairing some or all of the purlins and either installing metal roofing or pre-insulated metal panels. The range of cost for the various options is roughly between \$500,000 and \$900,000 The breakdown of the costs for the roofing is:

**1969**  
Sands & Ackley

0321-01 Replace some purlins	\$16,800
0321-02 Replacing all purlins	\$292,000
0321-02 Paint the tops of the rigid frames	\$3,100
0321-03 Paint the base plates	\$12,900
0511-01 Replace metal roofing and insulation	\$466,000
0511-01 Install pre-insulated metal panels	\$604,000

**1974**  
Ackley &  
Associates, Inc.

**1979**  
Ackley/Jensen  
Architects, Inc.

The options for the exterior walls are similar to the roof. The range of cost is roughly between \$180,000 and \$350,000. The breakdown of the cost for the exterior walls is:

**1985**  
Jensen Douglas  
Architects, Inc.

0410-01 Replace the metal siding and insulation	\$165,000
0410-01 Install pre-insulated metal panels	\$322,000
0410-02 Replace metal louvers	\$2,800
0431-01 Replace windows	\$12,300
0431-02 Install translucent lighting panels	\$27,400

**1997**  
Jensen Yorba Lott,  
Inc.

Please contact me if you want to discuss the draft further.

Sincerely,

Wayne Jensen  
Enclosure(s)

522 West 10<sup>th</sup> Street  
Juneau, AK 99801  
Tel: 907.586.1070  
Fax: 907.586.3959  
www.jensenyorbalott.com

## **05 Roofing Systems - Roofing**

---

**0511 Pitched Roofing** – the roofing system consists of concealed fastener metal roofing, 10” Z-purlins, loose laid fiberglass batt insulation, polyethelyene vapor retarder and exposed fastner metal siding on the interior.

### **Deficiency**

0511-01 Corrosion caused by condensation.

Condensation has occurred within the assembly causing corrosion to the purlins and roofing and saturating the batt insulation.

Deficiency category: RR (Renewal & Replacement)



## **05 Roofing Systems - Roofing**

---

### **Remedy**

Several options are available for addressing the condition. We understand that the preference is to retain the inside metal siding finish of the roof so the following options assume retaining the inside finish. The following are in addition to the structural work described in Section 03 Superstructure.

#### All Options:

- Remove roofing and insulation
- Repair and/or replace structural components per Section 03
- Patch vapor retarder
- Reattach inside metal siding as needed
- With purlin replacement option remove metal siding ceiling and paint exposed structure

#### Replacement Option 1:

- Install new batt insulation made specifically for pre-engineered metal buildings (Simple Saver type)
- Install thermal break insulation over purlins
- Install new concealed fastener roofing and associated flashing and roof penetrations
- Install ventilated ridge flashing and provide ventilation path at eaves

#### Estimated Cost

Construction:	\$333,000
Design, Inspection, Contingency (40%)	<u>\$133,000</u>
Total	\$466,000

#### Replacement Option 2:

- Install pre insulated metal roofing panels and associated flashing and roof penetrations

#### Estimated Cost

Construction:	\$503,000
Design, Inspection, Contingency (40%)	<u>\$201,000</u>
Total	\$604,000

## **05 Roofing Systems - Roofing**

---

**0512 Gutters & Downspouts** – All components of the roof drainage system

**Deficiency**

Roof drains are not connected to underground drainage at multiple locations areound the building.

**Deficiency category:** RR



**Remedy**

Connect all drains to underground pipe where not connected.

**Estimnated Construction Cost**

Not applicable-normal maintenance

## **04 Exterior Closure – Exterior Windows**

---

**0431 Windows** – Windows are installed on the north and east sides of the building in the Natatorium.

### **Deficiency**

0431-01 Corrosion on window flashing

Deficiency category: RR (Renewal & Replacement)



### **Remedy**

Reinstall or replace the windows as part of the Exterior Wall work in described in Section 04.

#### Estimated Cost

Construction:	\$ 8,800
Design, Inspection, Contingency (40%)	\$ <u>3,500</u>
Total	\$12,300

## **04 Exterior Closure – Exterior Windows**

---

### **Deficiency**

0431-02 Natural light into the Natatorium would improve the light quality, make the room more inviting and potentially save energy by reducing artificial lighting.

Deficiency category: F (Functional)



### **Remedy**

As part of the Exterior Wall work described in Section 04 install additional windows or translucent insulated fiberglass panels (Kalwall or similar).

#### Estimated Cost

Construction:	\$19,600
Design, Inspection, Contingency (40%)	<u>\$ 7,800</u>
Total	\$27,400

## **04 Exterior Closure – Exterior Walls**

---

**0410 Exterior Wall** – The exterior wall assembly consists of exposed fastner metal siding, 7” Z-girts, loose laid fiberglass batt insulation, polyethylene vapor retarder and exposed fastner metal siding interior finish.

### **Deficiency**

0410-01 Condensation within the assembly has caused corrosion of the girts and saturation of the batt insulation.

Deficiency category: RR (Renewal & Replacement)



## **04 Exterior Closure – Exterior Walls**

---

### **Remedy**

As with the Roofing System, several options are available for the Wall Assemblies. We understand that the preference is to retain the inside metal siding ceiling finish so the following options assume retaining the inside finish. The following are in addition to the structural work described in Section 03 Superstructure and the Interior work described in Section 06 Interior Construction

### All Options:

- Remove exterior siding and insulation
- Repair and/or replace structural components per Section 03
- Patch vapor retarder
- Reattach inside metal siding as needed.

### Replacement Option 1:

- Install new batt insulation made specifically for pre-engineered metal buildings (Simple Saver type)
- Install thermal break insulation over girts
- Install new concealed fastener siding and associated flashing and roof penetrations
- Install rafter screen ventilation mat (Home Slicker or similar) and provide ventilation path at base and top of wall

### Estimated Cost

Construction:	\$161,000
Design, Inspection, Contingency (40%)	\$ <u>64,000</u>
Total	\$165,000

### Replacement Option 2:

- Install pre insulated metal siding panels and associated flashing

### Estimated Cost

Construction:	\$230,000
Design, Inspection, Contingency (40%)	\$ <u>92,000</u>
Total	\$322,000



## **04 Exterior Closure – Exterior Walls**

---

### **Deficiency**

0410-02 Louver to mechanical room has rust.

**Deficiency category:** RR (Renewal & Replacement)



### **Remedy**

Replace or refinish louver.

### Estimated Cost

Construction:	\$2,000
Design, Inspection, Contingency (40%)	<u>\$ 800</u>
Total	\$2,800

## **03 Superstructure – Roof Structure**

---

### **0321 Pitched Roof – Structural roof diaphragm, supporting columns, and bracing**

The existing roof construction consists of rigid steel frames at approximately 20 feet on center supporting light gage steel Z purlins at approximately 5'-0" on center. The rigid steel frames are cross braced with steel bar or steel wire rope. The Z purlins support an interior metal ceiling panels and the exterior roofing panels. At the top of the walls at the eaves there is a C shaped light gage strut between rigid frames. At the edge of the roof at the eaves there is a light gage C section rim. The rake ends have a light gage U or track sections that is connected to the ends of the purlins.

In some locations purlins and eave struts are in poor condition due to the condensation of the moist natatorium air. The rigid steel frames and the steel rod and wire rope cross bracing appears to be in good condition.

Remaining life expectancy: 5 years

#### **Deficiency**

0321-01 Purlins



Purlin at Ridge

Purlins, eave struts, eave rims and rake rims have been exposed in discrete locations in the recent past when roofing repairs were done. At some locations the purlins, eave struts, eave rims and rake rims were in poor condition with significant corrosion. In other location there is minimal corrosion.

There are several repair options: complete replacement or inspect and replace only where needed.

### **03 Superstructure – Roof Structure**

---

If a lump sum contractor bid method is used, the contractor could replace all material with new galvanized, light gage framing. If a force account method is used the framing can be inspected and replaced only where needed and if some minor damage has occurred the rust can be removed with a wire brush and the paint can be repaired.

Deficiency category: Renewal & Replacement – RR

#### **Remedy**

Option 1: Replace all purlins, eave struts, eave rim and rake rim. This option includes total replacement of all construction above the rigid frames and replacing with galvanized light-gage steel framing. This work would be performed when the roofing is replaced and will require removal of interior ceiling pan.

Estimated Cost:

Construction	\$280,000
Design, Inspection, Contingency (40%)	<u>\$112,000</u>
Total	\$292,000

Option 2:

Replace only where needed after a thorough inspection. For estimating assume that 1/3 of light gage framing is to be replaced and one third repaired by wire bruising and painting.

1750LF purlins  
285 LF eave struts  
292 LF rim at eave  
140 LF rake rim

Estimated Cost:

Construction	\$12,000
Design, Inspection, Contingency (40%)	<u>\$ 4,800</u>
Total	\$16,800

## **03 Superstructure – Roof Structure**

---

### **Deficiency**

0321-02 Top of rigid frame coating

No photo available

While roof is open, coat the top of the steel frames

Deficiency category: Renewal & Replacement – RR

### **Remedy**

Coat top of Rigid Frames

565 LF

Estimated Cost:

Construction	\$ 2,200
Design, Inspection, Contingency (40%)	<u>\$ 900</u>
Total	\$ 3,100

## **03 Superstructure – Roof Structure**

---

### **Deficiency**

0321-03 Base Plate Corrosion



Minor Corrosion at Base Plates in Natatorium

Column base plates exhibit corrosion

Deficiency category: Renewal & Replacement – RR

### **Remedy**

Remove coatings, inspect base plates, reinforce if necessary and recoat.

16 each

Estimated Cost:

Construction	\$ 9,200
Design, Inspection, Contingency (40%)	<u>\$ 3,700</u>
Total	\$12,900

# CITY OF CRAIG MEMORANDUM

To: Craig City Council  
From: Daniel Nelson  
Date: July, 17 2014

---

-The month of June has been a challenging one. On June 23<sup>rd</sup> I went to bring North Star #2 online. It ran for 10-15 seconds and blew out the sight glass; this is the refurbished compressor that was installed two years ago. We were still able to deliver and produce ice with North Star #1. Saturday the 28<sup>th</sup> the rake was buried and the gear reduction unit was stripped. Come to find out the manual relay switch was bad and after delivering ice the relay was sticking and sending the rack down without any switches activated. This is what caused the rake and the gear reduction unit to go. Along with that the Oil pressure cut out switch for the evaporator fans was tripping and we could not get it to stay online to keep the bin cold, the same was happening with N.S. #1. AIR (Alaska Industrial Refrigeration) was able to come down from Sitka and install a new compressor and found that the thermostat that was installed that controls the cooling towers was in Celsius and not in Fahrenheit. Through all this some fuses and some timer switches failed. In the end we came back online with full service of both machines on July 9<sup>th</sup>.

-In the boat yard we had 21 hauls and 25 splashes.

-We have put two 50 gallon drums in the waste oil shed for oil filters and absorbent rags. We are hoping this will help with keeping it cleaner and a bit more organized.

-The new sport dock at the public boat launch has been signed off and is completed.

I stress the idea of communication; please feel free to contact me if you feel there is something being neglected in the harbor or if you feel I need to address certain issues that have gone unnoticed. I am open to criticisms and correction if I am in the wrong. The only way to make the harbor a better place is solutions and communication.

**CITY OF CRAIG  
MEMORANDUM**



**Date:** July 10, 2014  
**To:** Honorable Dennis Watson, Craig City Council  
**Fr:** RJ Ely, Police Chief  
**Re:** Staff Report

*RJ Ely*

**ACTIVITY**

Activity from May 29<sup>th</sup>, 2014 through June 30<sup>th</sup>, 2014. Dispatch Center took the following amount of calls for service:

Craig	1191
Klawock	418
AST	3

**DEPARTMENT OF MOTOR VEHICLES**

New equipment was installed and Craig DMV is now set up and issuing new ID's and Drivers License that have been implemented.

**DISPATCHER(S)**

Still advertising for Part Time / Fill In Dispatcher position. Application(s) have been handed out, but to date, no completed application(s) submitted.

**OFFICER(S)**

Officer Peterson has graduated the Alaska Public Safety Training Academy and has returned to work.

**OTHER**

I've been working on repairing camera system for the Harbor and hope to have them up and running soon.

I will be traveling to Juneau at the end of the month, to attend SEACAD Meeting.

I've begun a procedure within the department to scan prior reports / bookings / DMV and other records, to convert to digital and thus, freeing up space in containers that are currently being used. This will also allow for quicker access of said records, when needed.

I'm working on getting Ofc. D'Amelio scheduled to attend the next available re-certification training course in Sitka. Ofc. D'Amelio needs this two week APSC accredited training in order to obtain his Alaska Police Officer's Certification.

Officers will be attending local training in August. Joint training with AST / Klawock PD and VPSO, on major incident responses.

# Memo

To: Mr. Mayor, Craig City Council

From: Ron McIntosh, Public Works Director

CC: Jon Bolling, City Administrator

Date: July 11, 2014

Re: Public Works Council Report for July 17, 2014

---

## Activities and status:

1. Water and Wastewater Master Planning work is in final stages.
2. Pad fill project at False Island complete.
3. Resubmittal for North Fork Lake Dam permit in final stages.
4. Improper usage of the Burn Pit continues.
5. Water system continues in good shape with Silver Bay processing at very low levels.
6. Solid Waste Collection process continuing with award of truck construction.

Public Works continues to address day to day operations and issues. If you have any questions or any specific issues, please feel free to contact me.

Thank you,

RCMc



## Craig 4<sup>th</sup> of July Wrap up 2014.

The Festivities began at North Cove for the fishing derby at 5pm on Thursday, July 3<sup>rd</sup>. There were vendors in the parking. Hannah and Bowen Price helped me pick up the Booth materials from the POW Chamber. Set up was done by the 4<sup>th</sup> of July Committee, Hannah, Russ and Rayna, and myself with help from Tina Nelson and the Volleyball team, Barb and Craig Child Care Center and Frank Neff. The USFS let us use their tents so folks could watch the derby and the greasy pole.



The Greasy pole was at 6:30pm. With lots of brave, cold and wet kids!

The crowning of the royalty followed with much fanfare.

The fireworks started at 11pm! Thanks to Carl Benolken, Virgil Burnham and our dedicated crew. Fireworks is legal on the beaches.

The 4<sup>th</sup> started with the Firecracker fun run from Alicia Roberts to the Healing Heart Totem Pole in Craig. Sponsored by the POW Runners Club.



Then on the 4<sup>th</sup> the Firecracker fun run starts at 8am, registration opens at 7:30 at Alicia Roberts parking lot. Run to the healing heart!



The booth set up started at 8am- my excuse for not running. Line up for the parade was at 10:30 on Js Road, the parade started at 11am and Chaundell Piburn was in charge. The ballpark festivities started at 12:30 with Civil Air Patrol putting up the flag and Trinity Scheidecker singing the Star Spangled Banner. The bounce house, pie throw, lots of booths, games and some old fashioned fun for all! We missed Jim Seley this year and had Russ and Rayna doing booths, so Hannah and Ben ran the races, I announced and Carol and Darcy Grey assisted selling raffle tickets and giving out the prizes. Happy 4th of July!



Finale was the Slip and Slide by the Firemen!



Ended with the Duck Race on Saturday at 4pm! Winner took home \$535. Thanks to all the volunteers and sponsors who made this another successful and fun Celebration! Victoria Merritt, Craig Recreation.



# Craig Public Library Report To City Council

## June 2014

---

Submitted by: Amy K. Marshall, Library Director

Numbers are reflective of 6/1/2014 - 6/30/2014

Patron Visits: 2,078  
Circulations: 2,700  
Computer Use: 704  
Program Attendance: 289  
Reference Questions: 819

Summer Reading Started on June 7<sup>th</sup> with a Kickoff at Kids Fishing Day at Eagle's Nest Campground. We had 189 individuals pre-registered, and that number has grown by nearly 100 as of June 30<sup>th</sup>. The library is also sponsoring a weekly Science Camp for school-age children that meets Mondays at 10am, before the library opens to the General Public.

As June 30<sup>th</sup> marked the end of FY14, attached to this report is the Final FY14 comparison across the past four years. The annual numbers reflect a 3% increase in patron visits over FY13, but a 2% drop in circulation. Program attendance was up 25% over FY13's total and up over 300% over FY10's total. Computer use continues to escalate - with a 16% increase over FY13's numbers. The computer use is for sign-ins only; the library does not track after-hours use of the wifi.

Proctoring: Proctored 12 tests for 9 individuals during June

Programs: Summer Reading Program - June 7<sup>th</sup> - August 23<sup>rd</sup>  
Minecraft Mondays 3pm - 5pm  
LEGOs in the Library (Every Tuesday) 2pm - 4pm  
3D Club (Every Wednesday) 3pm - 5pm  
Kids' Movie (Every Thursday) 2pm - 4pm  
Toddler-Preschool Story Time (Every Friday) 10am  
Digital Privacy - NSA 6/10 6:30pm  
Trails Bridges Training (USFS Training) - 6/10, 6/12  
Sir Isaac Newton & Kinetic Energy - 6/16 at 10am  
Safe Food Preservation - 6/16 Noon  
Digital Privacy and Internet Browsing - 6/17, 6:30pm  
Spinning With Betsy - 6/18, 11am  
Magic & Science - 6/23, 10am  
Health Happy Hour, Wild About Edible Greens, 6/23, 6:30pm  
Author Visit with Victoria Heckman, 6/24, 6:30pm  
Holistic Healing with Maggie Stern, 6/25 and 7/2 6:00pm  
Paracord Bracelet Craft at the Library, 6/26 3pm

# Craig Public Library Report To City Council

## June 2014

3<sup>rd</sup> Annual Stuffed Animal Sleepover! 6/27-6/28  
Pushing The Limits – Survival 6/28 10am  
The Scoop on Poop (Stellar Sea Lion Diet) 6/30, 10am

### Highlights:

The library hired Neva Robertson, who will be working with the library's ILC grant for programming for children, teens, and adults.

The Science Camp is well attended – we have had between 16 and 35 children in the library for the programs. Funding for our video conferences comes from The Alaska OWL Project through their federal grant (Department of Commerce).

Forty-three stuffed animals spent the night at The Craig Public Library on Friday, June 27<sup>th</sup>. The children returned on Saturday, June 28<sup>th</sup> for breakfast with their stuffed animals and to enjoy a short film of how their friends spent the night at the library. The You Tube link will be available by Friday, July 11<sup>th</sup>.

The director was elected to the board of The Association of Rural and Small Libraries – a national organization dedicated to the support of libraries in communities of under 10,000. The director was also appointed to the YALSA (Young Adult Library Services Association) 2015 Summer Reading & Learning Task Force.

Grants Received:

- FY15 Interlibrary Cooperation Grant (\$6,500)
- FY15 Public Library Assistance Grant (\$6,650)
- HOPE Healthy Lifestyle Programming Grant (\$2,000)
- Alaska OWL New Printer (\$600)
- Alaska OWL Five (5) New Laptops (\$3,500)
- Alaska OWL Five (5) iPads (\$3,000)
- YALSA Top 25 YA Books Donation (\$500)

Grants in process:

- Native American BASIC Grant (IMLS) Year 3 – awaiting submission of paperwork from CTA for Year 3 approval and Years 1 and 2 funding (previously approved)
- Library Pre-Development with Rasmuson Shelving & Circulation Desk, Tier I, with Rasmuson
- Crossett Grant (Early Literacy Grant)

<u>1st Quarter Comparison</u>	<u>FY10</u>	<u>FY11</u>	<u>FY12</u>	<u>FY13</u>	<u>FY14</u>
<b>PATRON VISITS</b>	3805	4905	5728	4493	5492
<b>CIRCULATION: TOTAL ITEMS</b>	5506	6566	7852	7158	7017
<b>COMPUTER USERS SIGNED IN</b>	1452	1857	1696	1492	2077
<b>PROGRAMS: SUMMER READING</b>					
SIGNED UP	79	103	133	114	193
PARTICIPATED	63	76	92	97	177
COMPLETED	43	58	61	97	162
SCHEDULED ACTIVITIES	20	15	43	49	81
ATTENDED	270	294	411	803	885
<b>VOLUNTEERS: NUMBER</b>	22	14	25	30	15
HOURS	374	155	85	296	80
<u>2nd Quarter Comparison</u>	<u>FY10</u>	<u>FY11</u>	<u>FY12</u>	<u>FY13</u>	<u>FY14</u>
<b>PATRON VISITS</b>	3074	3524	4099	3913	3687
<b>CIRCULATION: TOTAL ITEMS</b>	5936	5553	6570	7277	6107
<b>COMPUTER USERS SIGNED IN</b>	838	1083	1052	1166	1314
<b>PROGRAMS: WINTER BREAK READING</b>				N/A	N/A
SIGNED UP	36	91	N/A		
PARTICIPATED	32	40	N/A		
COMPLETED	15	40	N/A		
SCHEDULED ACTIVITIES	0	4	N/A		43
ATTENDED	0	53	N/A		43
LIBRARY PROGRAMS (Attendance)	140	185	267	283	370
<b>VOLUNTEERS: NUMBER</b>	19	16	23	20	6
HOURS	296	112	78	104	52
<u>3rd Quarter Comparison</u>	<u>FY10</u>	<u>FY11</u>	<u>FY12</u>	<u>FY13</u>	<u>FY14</u>
<b>PATRON VISITS</b>	3706	4172	3915*	4460	4342
<b>CIRCULATION: TOTAL ITEMS</b>	5893	7548	6500*	7558	7405
<b>COMPUTER USERS SIGNED IN</b>	900	1205	924*	1376	1636
<b>PROGRAMS: LOVE OF READING</b>					
SIGNED UP	25	28	N/A	47	76
PARTICIPATED	25	28	N/A	41	76
LIBRARY PROGRAMS (Attendance)	na	219	314*	412	527
<b>VOLUNTEERS: NUMBER</b>	21	16	25*	20	9
HOURS	175	102	119*	92	118
<u>4th Quarter Comparison</u>	<u>FY10</u>	<u>FY11</u>	<u>FY12</u>	<u>FY13</u>	<u>FY14</u>
<b>PATRON VISITS</b>	4188	4875	5366	4978*	4849
<b>CIRCULATION: TOTAL ITEMS</b>	6150	7560	7449	6403*	7341
<b>COMPUTER USERS SIGNED IN</b>	1260	1260	1279	1559	1652
<b>PROGRAMS:</b>					
STORY HOUR (Ended May 19)		453	478	592	524
<b>VOLUNTEERS: NUMBER</b>	20	23	25	23	19
HOURS	210	102	164	157	168
<b>Annual Totals: PATRONS</b>	14773	17476	19108	17844	18370
<b>CIRCULATION: TOTAL ITEMS</b>	23485	27227	28371	28396	27870
<b>PROGRAM PARTICIPATION/STORY HOUR:</b>	708	1348	1562	1719	2306
<b>COMPUTER USERS SIGNED IN</b>	4450	5405	4951	5593	6679

# The Craig Public Library JUNE 2014 Calendar

Sunday	Monday	Tuesday	Wednesday	Thursday	Friday	Saturday
<p>8</p>  <p>Join us Tuesdays for our Privacy Series</p>	<p>9</p> <p>3pm Minecraft</p> 	<p>10</p> <p>2pm LEGOs</p> <p>6:30pm Digital Privacy: National Security Agency (NSA) and Digital Privacy</p>	<p>11</p> <p>3pm Club 3D</p> 	<p>12</p> <p>2pm Kids Movie at Craig Rec (Frozen)</p> <p>6pm Teen Move/Game Night (Ender's Game)</p>	<p>13</p> <p>10am Toddler-Preschool Storytime -- Father's Day</p>	<p>14</p> <p>World-Wide Knit In Public Week Is June 14th - 21st!</p> 
<p>15</p> <p>HAPPY FATHERS DAY!</p>	<p>16</p> <p>10am Science Camp: Kinetic Energy/Wind Spinners</p> <p>12pm Safe Food Preservation</p> <p>3pm Minecraft</p>	<p>17</p> <p>2pm LEGOs</p> <p>6:30pm Digital Privacy: Internet Browsing and Privacy</p> <p>7:30pm World Wide Knit In Public Week Knit-In!</p>	<p>18</p> <p>11am Spinning With Betsy</p> <p>3pm Club 3D Knit In Public Today!</p> 	<p>19</p> <p>2pm Kids Craft -- MAKE IT!</p> <p>Keep Knitting!</p> <p>6pm Teen Move/Game Night (Big Trouble In Little China)</p>	<p>20</p> <p>10am Toddler-Preschool Storytime -- Summer Solstice</p> <p>7pm Read The Red Carpet (To Kill A Mocking Bird)</p>	<p>21</p> 
<p>22</p>  <p>Magic &amp; Science on Monday!</p>	<p>23</p> <p>10am Magic &amp; Science!</p> <p>3pm Minecraft</p> <p>5:30pm Health Happy Hour: Wild Edible Greens</p> <p>6:30pm Teen Career Night!</p>	<p>24</p> <p><b>NO LEGOS</b></p> <p>6:30pm An Evening With Sisters In Crime Mystery Writer Victoria Heckman</p>	<p>25</p> <p>3pm Club 3D</p> 	<p>26</p> <p><b>NO MOVIE or CRAFT</b></p> <p>6pm Teen Move/Game Night (Catching Fire)</p>	<p>27</p> <p><b>THIRD ANNUAL SLEEP</b></p> <p>10am Toddler-Preschool Storytime</p> <p>7pm Read The Red Carpet (Monuments Men)</p>	<p>28</p> <p><b>STUFFED ANIMAL OVER</b></p> 
<p>29</p> 	<p>30</p> <p>10am Scoop on Poop</p> <p>3pm Minecraft</p>	<p>6/12 2pm</p> 	<p>6/12 6pm</p> 	<p>6/19 6pm</p> 	<p>6:26 6pm</p> 	

# Summer Science Camp!

## 10am Every Monday at The Craig Public Library

6/23: Magic & Science

6/30: The Scoop on Poop

7/5: Owl Pellets

7/14: Squid Dissection

7/21: A Cracking Good Time with Geodes!

7/28: Marine Mammals!

8/4: Virtual Heart with The Denver Museum

8/11: Art Station TITAN with The Denver Museum

8/18: Robot Garage (Registration Required)





ucore®  
RARE METALS

Press  
Release

## **Ucore Reports on 2014 Bokan Summer Field Program**

**June 25, 2014 - Halifax, Nova Scotia - Ucore Rare Metals Inc (TSX-V:UCU) (OTCQX:UURAF) ("Ucore" or "the Company")** is pleased to report that a contract has been awarded for a \$2.5 million diamond drilling program at their Bokan - Dotson Ridge rare earth project in southeast Alaska. The program will commence in mid-July with Aurora Geosciences as the Project Manager.

"It's great to see this program get underway as one of the final steps required to trigger our forthcoming feasibility study" said Ken Collison, COO of Ucore.

The 5,000 meter diamond drilling program consists of 2,500 meters of infill drilling; 1,500 meters of deep targeted drilling to expand the resource at depth; and 1,000 meters of geotechnical and groundwater drilling to support environmental analysis and the upcoming permitting process. This drilling program has been fully permitted with approvals from the United States Forest Service.

"I am very pleased to see our Bokan project moving forward according to plan", said Jim McKenzie, President and CEO of Ucore. "Very few heavy rare earth projects outside of China are at this advanced stage of development. We look forward to working in the field once again with Aurora Geosciences and our other consultants to advance this strategically important project. The list of pre-construction deliverables continues to shorten, and Bokan aims to be the first primarily heavy enriched rare earth mine to achieve production on US soil."

**About Ucore Rare Metals Inc.**



Ucore Rare Metals Inc. is a development-phase mining company focused on establishing rare metal resources, with near term production potential. With multiple projects across North America, Ucore's primary focus is the 100% owned Bokan - Dotson Ridge REE property in Alaska. The Bokan - Dotson Ridge REE project is located 60 km southwest of Ketchikan, Alaska and 140 km northwest of Prince Rupert, British Columbia and has direct ocean access to the western seaboard and the Pacific Rim, a significant advantage in developing near term production facilities and limiting the capital costs associated with mine construction.

The Bokan Mountain Project is the subject of a preliminary economic estimate ("PEA") prepared by Tetra Tech of Vancouver, the results of which were released by the Company on November 28, 2012. Please note that the PEA is preliminary in nature, that it includes inferred mineral resources that are considered too speculative geologically to have the economic considerations applied to them that would enable them to be categorized as mineral reserves, and there is no certainty that the PEA will be realized. Mineral resources that are not mineral reserves do not have demonstrated economic viability.

For further information, please contact Mr. Jim McKenzie, President and Chief Executive Officer of Ucore Rare Metals Inc. at: (902) 482-5214 or visit <http://www.ucore.com>

*This press release includes certain statements that may be deemed "forward-looking statements". All statements in this release, other than statements of historical facts, that address future exploration drilling, exploration activities, development timelines, and events or developments that the Company expects, are forward looking statements. Although the Company believes the expectations expressed in such forward-looking statements are based on reasonable assumptions, such statements are not guarantees of future performance and actual results or developments may differ materially from those in forward-looking statements. Factors that could cause actual results to differ materially from those in forward-looking statements include exploitation and exploration successes, continued availability of financing, and general economic, market or business conditions.*

**Ucore Rare Metals Inc.**  
210 Waterfront Drive  
Bedford, Nova Scotia  
Canada  
B4A0H3

[www.ucore.com](http://www.ucore.com)  
[www.ucore.com/ucoretv](http://www.ucore.com/ucoretv)

Like us on Facebook 

902.482.5214  
[info@ucore.com](mailto:info@ucore.com)

Follow us on **twitter**



# ALASKA PERMANENT CAPITAL MANAGEMENT

Registered Investment Adviser

JUNE 2014

## MONTHLY PERSPECTIVES

### ECONOMY & FINANCIAL MARKETS

#### Sell in May and go away?

Not this time. The large cap S&P 500 Index gained +2.4% in May and has provided a +5.0% total return year to date. REIT stocks that invest in commercial properties like office buildings and retail centers have been on fire, gaining +16.4% so far this year. After jumping +41.3% last year, smaller cap stocks have lost -1.4% through May.

Bonds have been a big surprise this year with yields falling 0.6% on the ten year Treasury to 2.48%. The broad based Barclays U.S. Aggregate Bond Index has almost matched the stock market in terms of performance, up +3.9% year to date. International sovereign bonds have done even better. The yields on Italian and Spanish sovereign debt are now below 3% after having traded well north of 7% only two years ago.

All of this despite the fact that first quarter GDP in the U.S. declined at a -1% annual rate. It really is the rear view mirror though and very much a bad weather related decline. The consensus forecast for second quarter growth is north of +3%. Economists are blissfully unworried and believe modest growth and low inflation worldwide is in the cards.

Of course that may spell complacency. In fact, analysts note that since 1969 the S&P 500 has dropped by -1% or more 27 days a year on average. In the past 12 months, there have been only 19 such days. The VIX index of stock market volatility is bouncing around 25 year lows. There are signs of investors reaching for yield given the unexpected decline in rates so far this year.

#### *The Bet* by Paul Sabin

This is a terrific book that revisits the debate between celebrity biologist Paul Ehrlich, and economist Julian Simon. The author writes:

“Ehrlich, author of the landmark book *The Population Bomb* (1968), predicted that rising population would cause overconsumption, resource scarcity, and famine – with apocalyptic consequences for humanity. Simon countered that

human welfare would flourish thanks to flexible markets, technological change, and our collective ingenuity.”

Needless to say Ehrlich was wrong on most counts yet he received much more fame and fortune than Simon. The Stanford professor appeared on the Johnny Carson show 20 times and received literally millions of dollars in personal awards.

When Walter Hickel was named Secretary of the Interior under President Nixon, Ehrlich wrote that the appointment of Alaska’s pro development governor “was enough to make any conservationist’s toes curl.”

Simon was a more obscure University of Illinois professor. He started out in Ehrlich’s camp but then the data convinced him that population growth had not undermined economic growth. He said “more population means more creators and producers.”

In 1980 the two antagonists entered into a bet. Simon allowed Ehrlich to pick any five commodities that he liked. Ehrlich believed that resources were finite and that we were running out of everything, so he bet that prices would be much higher. Simon thought that prices would be lower 10 years from that date due to substitution effects and new discoveries.

In October 1990, Simon received an envelope in the mail that contained “a sheet of metals prices along with a check from Paul Ehrlich for \$576.07. There was no note.” Prices of the five metals chosen – chromium, copper, nickel, tin and tungsten – had fallen by an average of -50%.

This debate echoes controversies today about global warming and forecasts of secular stagnation. We will always have things to worry about. But the past suggests that mankind has a remarkable ability to solve problems and overcome adversity.

**Jeff Pantages, CFA**  
Chief Investment Officer



**Bill Lierman, CFA**  
Portfolio Manager

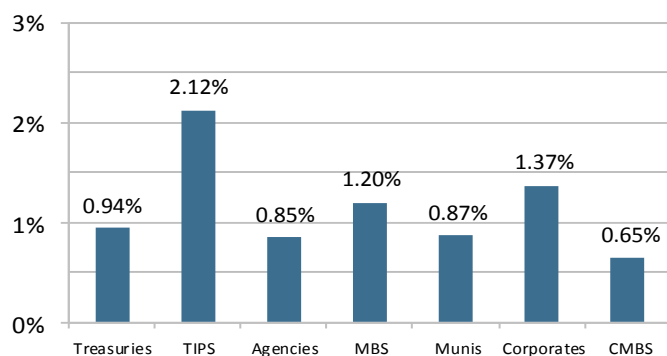
■ Treasuries returned +0.94% for the month. The 10 year bond yield drifted lower throughout the month and finished at 2.48%.

■ The insatiable appetite for yields carried over to TIPS, which returned +2.12%. The Treasury auctioned \$13bn of 10 year TIPS at a real yield of 0.34%. The auction's bid-to-cover ratio was 2.91, well above the recent average of 2.51.

■ Corporates gained +1.37% in May, marking their fourth month

this year with a return above +1%. YTD corporates have returned +5.60%. Surprising considering equities (S&P 500), which are lower in the capital structure, have gained only +4.97% YTD.

### June 2014 Bond Total Return



Barclays

■ Consumers continue to repair their balance sheets. In the most recent New York Federal Reserve Quarterly Report on Household Debt and Credit, mortgage originations decreased to \$332bn, the lowest level since Q3 of 2011. Balances on credit card accounts decreased by \$24bn and the number of credit inquiries in the past six months dropped by 8 million.

■ Moody's lowered its outlook on 82 European banks to negative. European banks rely on commercial paper for funding more so than their U.S. counterparts and also carry larger derivative exposures. APCM continues to watch European bank CP rates to monitor stress in funding.

■ The 10 year German Bund sits at 1.36%. Spanish and Portuguese 10 year bonds are a little wider than the U.S. rate at 2.85% and 3.61%, respectively. There are many different reasons for low rates but three that APCM tends to lean towards are: 1) Slowing global economic growth with low inflation 2) Geo-political risk and 3) The old adage "the market will hurt the most participants." The investment community was short duration with the expectation that yields would increase this year. Of course rates have fallen in 2014. We have been slightly short duration and still hold our view that bonds are fundamentally expensive over a long time horizon. We do not chase performance.

■ The S&P 500 returned +2.4% and is now up +5.0% YTD. Apple contributed to index performance, advancing +3% as it extended its business line with the purchase of Beats Electronics. Transportation stocks are outpacing broader index returns, up +9.9% YTD as Airlines have sky rocketed over +43%.

### Total Return (%) as of May 31, 2014

	One Month	Three Month	Six Month	Twelve Month
<b>Domestic Equities</b>				
Large Cap <i>S&amp;P 500</i>	2.4	4.0	7.6	20.5
Mid Cap <i>S&amp;P 400</i>	1.8	0.6	6.4	18.0
Small Cap <i>S&amp;P 600</i>	0.3	-1.9	0.0	19.7
<b>International Equities</b>				
Developed <i>MSCI EAFE</i>	1.6	2.4	5.3	18.0
Emerging <i>MSCI Emerging Markets</i>	3.5	7.0	1.9	4.3
<b>Other</b>				
Commercial Property <i>S&amp;P U.S. REIT</i>	2.4	6.4	16.6	9.8
Commodities <i>DJ-UBS Commodity</i>	-2.9	-0.1	7.8	2.5
<b>Fixed Income</b>				
Total Bond Market <i>Barclays Aggregate</i>	1.1	1.8	3.3	2.7
1-3 Yr U.S. Treasury/Agency <i>Barclays 1-3 Gov</i>	0.2	0.2	0.3	0.8
Int'l Treasury <i>Barclays Global Tsy ex-US</i>	0.4	2.1	4.3	7.5

■ U.S. mid cap stocks followed closely behind finishing up +1.8%. They were helped by consumer staples which surged +7.5% in May and are up +18.0% YTD, outperforming all other mid, large and small cap sectors. The S&P Small Cap 600 eked out a +0.3% return but remains in the red YTD, off -1.4%.

■ Developed international markets increased +1.6%. Japan (+4.0%) was the best performing region, helped by a narrowing trade deficit, stronger manufacturing activity, and a weakening Yen.

■ Emerging markets rebounded strongly, finishing up +3.5%. Russia started a comeback climbing +12.1% as tensions eased in the Ukraine, but the country's equity market is still off -9.9% YTD when measured in USD. India also did well, adding +11.9% as elections brought in a new government with promises of greater prosperity.

■ REITs continued to post solid returns, gaining another +2.4% driven by strong fundamentals across almost all REIT sectors. 2014 full year earnings guidance has been raised by a number of companies.

■ Commodities finished in negative territory for the first month this year losing -2.9%. The selloff in agriculture (-8.1%) and precious metals (-3.7%) offset gains in metals (+2.6%) and energy (+1.4%).



**Brandy Niclai, CFA**  
Portfolio Manager

# CITY OF CRAIG

Account Statement - Period Ending May 31, 2014



## ACCOUNT ACTIVITY

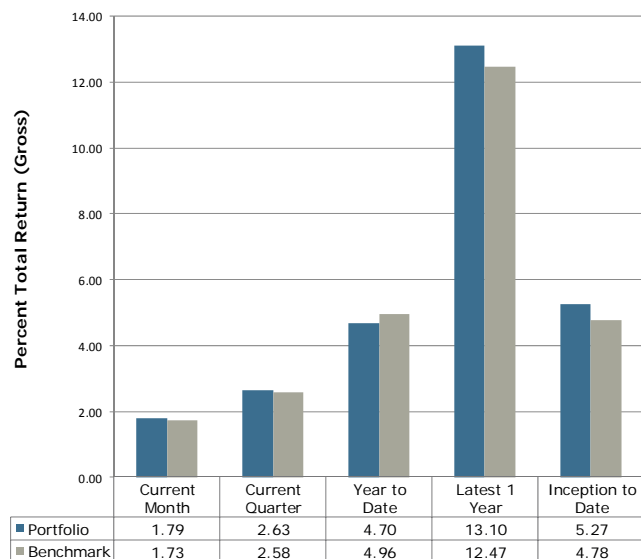
Portfolio Value on 04-30-14	10,009,638
Contributions	0
Withdrawals	-2,502
Change in Market Value	171,430
Interest	7,605
Dividends	0
Portfolio Value on 05-31-14	10,186,170

## MANAGEMENT TEAM

Director of Client Relations:	Laura Bruce, CFP®, ChFC Laura@apcm.net
Your Portfolio Manager:	Bert Wagnon Jason Roth
Contact Phone Number:	907/272 -7575

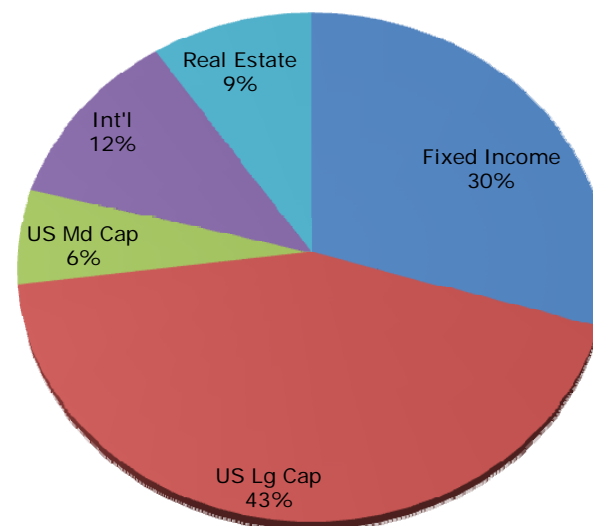
## INVESTMENT PERFORMANCE

Current Account Benchmark:  
Equity Blend



Performance is Annualized for Periods Greater than One Year

## PORTFOLIO COMPOSITION



Alaska Permanent Capital Management Co.  
**PORTFOLIO SUMMARY AND TARGET**  
***CITY OF CRAIG***  
*May 31, 2014*

<b>Asset Class &amp; Target</b>	<b>Market Value</b>	<b>% Assets</b>	<b>Range</b>
<b>FIXED INCOME (34%)</b>			
US Fixed Income (34.0%)	2,983,427	29.3	20% to 45%
Cash (0.0%)	30,252	0.3	na
<b>Subtotal:</b>	<b>3,013,679</b>	<b>29.6</b>	
<b>EQUITY (66%)</b>			
US Large Cap (40.0%)	4,429,713	43.5	30% to 50%
US Mid Cap (6.0%)	603,920	5.9	0% to 10%
Developed International Equity (10.0%)	1,178,568	11.6	5% to 15%
Real Estate (10.0%)	960,289	9.4	5% to 15%
<b>Subtotal:</b>	<b>7,172,491</b>	<b>70.4</b>	
<b>TOTAL PORTFOLIO</b>	<b>10,186,170</b>	<b>100</b>	

Alaska Permanent Capital Management Co.  
**PORTFOLIO APPRAISAL**  
**CITY OF CRAIG**  
*May 31, 2014*

Quantity	Security	Average Cost	Total Average Cost	Price	Market Value	Pct. Assets	Annual Income	Accrued Interest	Yield to Maturity
<b>U.S. TREASURY</b>									
40,000	US TREASURY NOTES 1.250% Due 10-31-15	98.51	39,405	101.50	40,598	0.40	500	43	0.19
175,000	US TREASURY NOTES 0.625% Due 07-15-16	100.11	175,185	100.44	175,766	1.73	1,094	414	0.42
150,000	US TREASURY NOTES 0.625% Due 08-31-17	99.79	149,684	99.09	148,629	1.46	937	237	0.91
300,000	US TREASURY NOTES 1.875% Due 09-30-17	102.89	308,672	103.05	309,141	3.03	5,625	953	0.94
100,000	US TREASURY NOTES 3.750% Due 11-15-18	106.48	106,480	110.48	110,477	1.08	3,750	173	1.32
100,000	US TREASURY NOTES 3.500% Due 05-15-20	104.04	104,039	109.80	109,805	1.08	3,500	162	1.76
200,000	US TREASURY NOTES 1.375% Due 05-31-20	98.88	197,766	97.52	195,032	1.91	2,750	8	1.81
125,000	U S TREASURY NOTES 2.125% Due 08-15-21	98.40	122,998	100.37	125,469	1.23	2,656	778	2.07
50,000	US TREASURY NOTES 1.625% Due 11-15-22	98.79	49,396	94.87	47,433	0.47	812	38	2.30
150,000	US TREASURY NOTES 2.500% Due 08-15-23	97.85	146,777	101.03	151,546	1.49	3,750	1,098	2.37
	Accrued Interest				3,903	0.04			
			1,400,402		1,417,799	13.92		3,903	
<b>AGENCIES</b>									
50,000	FHLB 5.250% Due 06-18-14	100.80	50,401	100.23	50,115	0.49	2,625	1,189	0.35
150,000	FNMA* 0.800% Due 02-28-18	98.26	147,390	99.89	149,836	1.47	1,200	310	0.83
100,000	FHLMC 3.750% Due 03-27-19	101.41	101,410	110.42	110,419	1.08	3,750	667	1.50
	Accrued Interest				2,165	0.02			
			299,201		312,536	3.07		2,165	
<b>FNMA &amp; FHLMC</b>									
15,542	FHLMC 4.00% POOL G14203 4.000% Due 04-01-26	104.56	16,251	106.83	16,603	0.16	622	52	2.07
	Accrued Interest				52	0.00			
			16,251		16,655	0.16		52	
<b>ASSET-BACKED SECURITIES</b>									
100,000	GE CAPITAL CREDIT CARD MASTER NOTE 3.800% Due 11-15-17	107.25	107,250	101.53	101,535	1.00	3,800	169	0.44

Alaska Permanent Capital Management Co.  
**PORTFOLIO APPRAISAL**  
**CITY OF CRAIG**  
*May 31, 2014*

Quantity	Security	Average Cost	Total Average Cost	Price	Market Value	Pct. Assets	Annual Income	Accrued Interest	Yield to Maturity
	Accrued Interest				169	0.00			
			107,250		101,703	1.00		169	
<b>CORPORATE BONDS</b>									
100,000	JP MORGAN CHASE & CO 4.750% Due 03-01-15	97.18	97,176	103.13	103,130	1.01	4,750	1,187	0.56
100,000	HSBC FINANCE CORP 5.500% Due 01-19-16	100.21	100,206	107.61	107,609	1.06	5,500	2,017	0.80
50,000	BRITISH COLUMBIA PROV OF 2.100% Due 05-18-16	99.98	49,990	103.21	51,605	0.51	1,050	38	0.46
50,000	BANK AMER CORP 5.625% Due 10-14-16	107.18	53,592	110.17	55,087	0.54	2,812	367	1.25
50,000	CONOCOPHILLIPS CANADA 5.625% Due 10-15-16	117.91	58,955	111.63	55,815	0.55	2,812	359	0.67
50,000	STATOIL ASA 3.125% Due 08-17-17	107.07	53,533	106.30	53,148	0.52	1,562	451	1.12
100,000	UNITED PARCEL SERVICE 5.500% Due 01-15-18	121.23	121,230	114.83	114,827	1.13	5,500	2,078	1.30
100,000	WACHOVIA CORP GLOBAL MEDIUM 5.750% Due 02-01-18	99.57	99,572	114.70	114,697	1.13	5,750	1,917	1.60
75,000	UNITED HEALTH GROUP INC 6.000% Due 02-15-18	121.46	91,093	115.51	86,632	0.85	4,500	1,325	1.66
75,000	GENERAL ELECTRIC CAP CORP. 5.625% Due 05-01-18	88.27	66,205	114.91	86,185	0.85	4,219	352	1.67
50,000	TOYOTA MOTOR CREDIT CORP 2.100% Due 01-17-19	100.48	50,239	101.20	50,601	0.50	1,050	391	1.83
100,000	GOLDMAN SACHS GROUP INC. 7.500% Due 02-15-19	116.51	116,514	122.44	122,436	1.20	7,500	2,208	2.42
100,000	VERIZON COMMUNICATIONS 6.350% Due 04-01-19	125.02	125,020	119.21	119,212	1.17	6,350	1,058	2.14
	Accrued Interest				13,749	0.13			
			1,083,327		1,134,734	11.14		13,749	
<b>DOMESTIC LARGE CAP EQUITY FUNDS/ETF</b>									
22,990	SPDR S&P 500 ETF	137.86	3,169,436	192.68	4,429,713	43.49	NA		
<b>DOMESTIC MID CAP EQUITY FUNDS/ETF</b>									
4,388	ISHARES CORE S&P MIDCAP 400 ETF	69.71	305,867	137.63	603,920	5.93	NA		
<b>INTERNATIONAL EQUITY FUNDS/ETF</b>									
27,627	VANGUARD FTSE DEVELOPED MARKETS ETF	37.73	1,042,293	42.66	1,178,568	11.57	NA		



Alaska Permanent Capital Management Co.  
**PORTFOLIO APPRAISAL**  
***CITY OF CRAIG***  
*May 31, 2014*

<u>Quantity</u>	<u>Security</u>	<u>Average Cost</u>	<u>Total Average Cost</u>	<u>Price</u>	<u>Market Value</u>	<u>Pct. Assets</u>	<u>Annual Income</u>	<u>Accrued Interest</u>	<u>Yield to Maturity</u>
<b>REAL ESTATE</b>									
12,857	VANGUARD REIT ETF	56.44	725,700	74.69	960,289	9.43	NA		
<b>CASH AND EQUIVALENTS</b>									
	CASH RECEIVABLE		1,375		1,375	0.01	NA		
	FEDERATED GOVERNMENT OBLIGATION		28,877		28,877	0.28			
			30,252		30,252	0.30			
<b>TOTAL PORTFOLIO</b>			<b>8,179,979</b>		<b>10,186,170</b>	<b>100</b>	<b>90,728</b>	<b>20,037</b>	

Alaska Permanent Capital Management Co.  
**TRANSACTION SUMMARY**  
**CITY OF CRAIG**  
*From 05-01-14 To 05-31-14*

Trade Date	Settle Date	Security	Quantity	Trade Amount
<b>DEPOSITS AND EXPENSES</b>				
MANAGEMENT FEES				
05-31-14	05-31-14	MANAGEMENT FEES		2,546.54
				<b>2,546.54</b>
<b>INTEREST</b>				
ASSET-BACKED SECURITIES				
05-15-14	05-15-14	GE CAPITAL CREDIT CARD MASTER NOTE 3.800% Due 11-15-17		316.67
CASH AND EQUIVALENTS				
05-01-14	05-01-14	FEDERATED GOVERNMENT OBLIGATION		0.40
CORPORATE BONDS				
05-01-14	05-01-14	GENERAL ELECTRIC CAP CORP. 5.625% Due 05-01-18		2,109.38
05-18-14	05-18-14	BRITISH COLUMBIA PROV OF 2.100% Due 05-18-16		525.00
				<hr/> 2,634.38
FNMA & FHLMC				
05-01-14	05-14-14	FHLMC 4.00% POOL G14203 4.000% Due 04-01-26		53.20
U.S. TREASURY				
05-15-14	05-15-14	US TREASURY NOTES 3.750% Due 11-15-18		1,875.00

Alaska Permanent Capital Management Co.  
**TRANSACTION SUMMARY**  
**CITY OF CRAIG**  
*From 05-01-14 To 05-31-14*

Trade Date	Settle Date	Security	Quantity	Trade Amount
05-15-14	05-15-14	US TREASURY NOTES 3.500% Due 05-15-20		1,750.00
05-15-14	05-15-14	US TREASURY NOTES 1.625% Due 11-15-22		406.25
05-31-14	06-02-14	US TREASURY NOTES 1.375% Due 05-31-20		1,375.00
				5,406.25
				<b>8,410.90</b>
<b>PRINCIPAL PAYDOWNS</b>				
FNMA & FHLMC				
05-01-14	05-14-14	FHLMC 4.00% POOL G14203 4.000% Due 04-01-26	417.90	417.90
				<b>417.90</b>
<b>WITHDRAW</b>				
CASH AND EQUIVALENTS				
05-27-14	05-27-14	FEDERATED GOVERNMENT OBLIGATION		2,502.41
				<b>2,502.41</b>

Alaska Permanent Capital Management Co.  
**REALIZED GAINS AND LOSSES**  
***CITY OF CRAIG***  
*From 05-01-14 Through 05-31-14*

<u>Date</u>	<u>Quantity</u>	<u>Security</u>	<u>Avg. Cost Basis</u>	<u>Proceeds</u>	<u>Gain Or Loss</u>
05-01-14	417.90	FHLMC 4.00% POOL G14203 4.000% Due 04-01-26	436.97	417.90	-19.07
TOTAL GAINS					0.00
TOTAL LOSSES					-19.07
			<b>436.97</b>	<b>417.90</b>	<b>-19.07</b>

Alaska Permanent Capital Management Co.

**CASH LEDGER**

***CITY OF CRAIG***

*From 05-01-14 To 05-31-14*

<b>Trade Date</b>	<b>Settle Date</b>	<b>Tran Code</b>	<b>Activity</b>	<b>Security</b>	<b>Amount</b>
<b>CASH RECEIVABLE</b>					
05-01-14			Beginning Balance		0.00
05-31-14	06-02-14	dp	Interest	US TREASURY NOTES 1.375% Due 05-31-20	1,375.00
<b>05-31-14</b>			<b>Ending Balance</b>		<b>1,375.00</b>
<b>FEDERATED GOVERNMENT OBLIGATION</b>					
05-01-14			Beginning Balance		23,925.26
05-01-14	05-01-14	dp	Interest	GENERAL ELECTRIC CAP CORP. 5.625% Due 05-01-18	2,109.38
05-01-14	05-01-14	dp	Interest	FEDERATED GOVERNMENT OBLIGATION	0.40
05-01-14	05-14-14	dp	Interest	FHLMC 4.00% POOL G14203 4.000% Due 04-01-26	53.20
05-01-14	05-14-14	dp	Paydown	FHLMC 4.00% POOL G14203 4.000% Due 04-01-26	417.90
05-15-14	05-15-14	dp	Interest	US TREASURY NOTES 3.750% Due 11-15-18	1,875.00
05-15-14	05-15-14	dp	Interest	US TREASURY NOTES 3.500% Due 05-15-20	1,750.00
05-15-14	05-15-14	dp	Interest	US TREASURY NOTES 1.625% Due 11-15-22	406.25
05-15-14	05-15-14	dp	Interest	GE CAPITAL CREDIT CARD MASTER NOTE 3.800% Due 11-15-17	316.67
05-18-14	05-18-14	dp	Interest	BRITISH COLUMBIA PROV OF 2.100% Due 05-18-16	525.00

Alaska Permanent Capital Management Co.

**CASH LEDGER**

***CITY OF CRAIG***

*From 05-01-14 To 05-31-14*

<b>Trade Date</b>	<b>Settle Date</b>	<b>Tran Code</b>	<b>Activity</b>	<b>Security</b>	<b>Amount</b>
05-27-14	05-27-14	wd	Withdrawal	from Portfolio	-2,502.41
<b>05-31-14</b>			<b>Ending Balance</b>		<b>28,876.65</b>

div  
div  
div

**ADN.com**

Previous Story

Next Story

## Despite \$3 billion boost, Alaska pension cost will hit municipalities hard

By PAT FORGEY

pat@alaskadispatch.com June 15, 2014

Facebook Twitter Google Plus Reddit E-mail Print

JUNEAU -- A move to shore up Alaska's troubled public retirement systems with \$3 billion from state savings is coming under fire from some members of the board set up to ensure that an earlier costly pension debacle wasn't repeated.

This year's action by the Legislature comes with strings attached that could lead to problems down the road, they say.

"Any way you look at it, we've pushed these costs onto our kids and grandkids," said Kris Erchinger of Seward, a member of the Alaska Retirement Management Board .

In the just-concluded legislative session, lawmakers extended the period over which Alaska's \$12 billion unfunded pension liability would be paid off while shifting some costs to Alaska cities and boroughs.

Extending the amortization period, the time over which that debt would be paid, is comparable to the difference between a 15-year and a 30-year mortgage, Erchinger said. Essentially, the longer period allows lower monthly payments, but at a much greater total cost.

"It's a better deal for the folks who have to balance the budget today because they have to pay less today," she said.

"But projections of decline in oil production -- oil revenues -- does not bode well for our ability to pay those costs in the future," Erchinger said.

While retirement board member Martin Pihl of Ketchikan joined Erchinger and others in praising the \$3 billion, he doesn't like the Legislature's cost shift.

"I do have deep regret over what I feel is the unnecessary extension of the amortization period, bringing huge, huge, additional cost -- like more than \$2.5 billion to the people across Alaska -- and forcing even greater numbers into state budgets down the line," Pihl said.

### Municipalities pay more

That increased cost for municipalities stems from a 2005 deal in which state and local government officials negotiated a way to pay off the unfunded liability. It called for municipalities to pay an extra 22 percent of their payroll toward the back debt until it is paid off. Extending the amortization term by nine or 10 years increases the cities' share while reducing the state's share of that cost.

"I ran the numbers for Seward, and just to extend the amortization period was \$2,000 for every man, woman and child living in Seward," said Erchinger, that city's finance director as well as an ARM Board member.

The Alaska Retirement Management Board was created in 2005 after lawmakers were stunned by the growth of the state's unfunded liability. That's the difference between what the state needs to pay benefits and what it expects to have available.

After Alaska's actuarial consultant was found to have provided false numbers to the state, the ARM Board was told to hire a second actuary to review the work of the first actuary to make sure the state based its decisions on good numbers.

But despite drastic changes to the state's public employee retirement system, replacing the traditional defined-benefit pension with a 401(k)-style defined-contribution plan, the unfunded liability continued to grow. Since then it's nearly doubled.

Although the new ARM board repeatedly called attention to that growth, neither the governor nor legislators proposed any changes.

Finally, the retirement board took one of the few steps it had the power to take, changing how the amortization period to pay off that liability was calculated, with the new method putting much more money into the trust funds earlier.

The switch from the previous level-percent-of-pay method to the level-dollar method would have meant a cost to the state of about \$1 billion this year.

'Constitution is pretty unambiguous'

Instead, the Legislature passed House Bill 385, which called for the \$3 billion deposit into the retirement trust funds. But it also takes away from the board the power to decide which amortization method to use, requiring it to go back to level percent of pay, said Gayle Harbo, an ARM Board member from Fairbanks.

"One thing I get a kick out of is when they tell us we have to use actuaries all over the place to make our recommendations, and then when we listen to the warnings the actuaries gave us, the Legislature just changes it all," Harbo said. "It increased the amount of money that the municipalities are going to have to pay."

That change was a disappointment to the Retired Public Employees of Alaska organization, which has watched the process closely.

"Our preference would have been to go with the ARM Board's decision to use the level-dollar option, providing those higher payments in the early years when we still have money in the bank," said Jay Dulany, the group's president.

He said the group has been assured by legislators that the state will continue to meet its obligations, but whether that happens is "anybody's guess."

State funds eventually will have to be used to pay pension obligations, even if the only state money available is the Alaska Permanent Fund, state officials say.

"Our constitution is pretty unambiguous," said Rep. Bill Stoltze, R-Chugiak, before the bill passed. "Retirement benefits are a contractual obligation. It couldn't be any more clear."

Board member Sam Trivette of Juneau said the level-percent-of-pay method adopted by the Legislature will result in less money going into the retirement trust funds initially, weakening them and driving up costs in the long run.

"That's why we supported level-dollar," he said. "A shorter amortization period saves everybody billions of dollars."

The Legislature, in its final days, or hours, made another change -- one that was a blow to municipalities.

The Senate Finance Committee was working on HB 385, action being closely followed by the Alaska Municipal League.



Days earlier, the group had fended off proposals to raise the amount of payroll cities had to contribute from 22 percent to 24 percent, something municipal league Executive Director Kathie Wasserman said would be devastating.

Her group also fended off a proposal, adopted by the House Finance Committee, to shift to a radical pay-as-you-go plan.

But the radical plan was rejected by the full House of Representatives, and the Senate Finance Committee was looking at a plan that resembled Gov. Sean Parnell's original plan, one that was endorsed by the municipal league.

Wasserman was called to the Senate Finance Committee table and asked to testify on the bill. She told the committee the group endorsed HB 385, but as soon as she sat back down in the audience, Wasserman was concerned.

"Wow, they could do anything to us now, and I'm on the record saying 'Yeah! Way to go!'" Wasserman said later. And then, almost immediately, the legislators did what she feared.

They rewrote the bill Wasserman had just gone out on a limb to endorse publicly, shifting almost half of the extra money from the Public Employees' Retirement system to the Teachers' Retirement System.

The \$3 billion Parnell had originally sought included \$1.9 billion for PERS and \$1.1 billion for TRS. The rewrite made it \$1 billion for PERS and \$2 billion for TRS.

Now, not only will the amortization period be extended, the annual costs to municipalities will be larger than they'd hoped for.

State government pays a larger share of the Teachers' Retirement System unfunded liability, so shifting the bulk of the \$3 billion there helps balance state budgets at the expense of municipal budgets, she said.

"I understand why they did that, because they're paying so much more on TRS," Wasserman said.

No time for debate

HB 385 was then rushed to the floors of both houses of the Legislature without public hearings and with almost no time for public input on the changes. It passed unanimously in both the House and Senate.

"It almost had the appearance at the end that everyone was holding hands and we all got what we wanted, when in fact it is a drastic shift and it was one that will benefit the state (government) and have a huge cost to municipalities," Erchinger said.

The combined changes will now cost the taxpayers in Seward many thousands each, she said. Other cities and boroughs presumably face similar costs, she said.

Parnell has yet to sign HB 385, but he has already signed budget bills to which it is linked.

Reach Pat Forgey at [pat@alaskadispatch.com](mailto:pat@alaskadispatch.com).

[Facebook](#) [Twitter](#) [Google Plus](#) [Reddit](#) [E-mail](#) [Print](#)

## Join The Conversation

Anchorage Daily News is pleased to provide this opportunity to share information, experiences and observations about what's in the news. Some of the comments may be reprinted elsewhere in the site or in the newspaper. We encourage lively, open debate on the issues of the day, and ask that you refrain from profanity, hate speech, personal comments and remarks that are off point. Thank you for taking the time to offer your thoughts.

[Commenting FAQs](#) | [Terms of Service](#)



May 31, 2014

Prince of Wales Island Marathon and Half Marathon  
Box 5  
Klawock, AK 99925

Mr. Jon Bolling, Administrator  
City of Craig  
P.O. Box 725  
Craig, AK 99921

Dear Mr. Bolling:

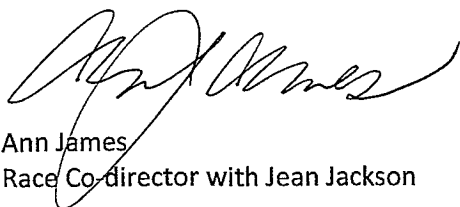
As my memory floats back to our 15<sup>th</sup> Annual Prince of Wales Island Marathon and Half Marathon recently staged on May 24, I can easily recall the numerous positive comments and affirmations heard from participants and spectators on that day. I do believe I most often heard the exclamation "Next year!" as an indication of plans to participate again in 2015 or to join in as a new participant. As a committee that has worked diligently for over ten months to reach race day, we certainly delighted in hearing these wonderful words repeated over and over.

Because of your generous Silver Level Sponsorship of our marathon and half marathon, we were able to truly celebrate our 15<sup>th</sup> year and treat participants to an event to remember. Our one of a kind medal was designed and made here on the island by local island artists Kathy Peavey and Deborah Ross. We specifically selected lanyards for each of the race categories to match these stunning medals. We purchased an eye-catching banner to mark the area where the race would be staged. We had designer race bags and also clothing drop bags available. Another treat was the grilled salmon feed at the finish line – free for participants. The course is now certified for both the full marathon and half marathon lengths, allowing runners to use our race times to qualify for other venues. And our long sleeve, tech race shirt is one that will be worn for many years. Oh! This is only a partial list!

We have numerous delightful marathon day stories to share – from 72-year old Russell running his 355<sup>th</sup> marathon here, which was also his first Alaska marathon; to Steve, who has run a marathon in all 50 states, each time under four hours; to Annette, who came to Alaska to run our marathon because her late husband always wanted to bring her to the 49<sup>th</sup> state; to the men's winner, who is to marry one of the Bride on the Run relay team members; to the many individual stories of triumphs and sometimes success delayed. These were stories that we were all able to experience.

We offer you an abundance of thanks for your sponsorship and support of our island's marathon and half marathon; it is not something that we take lightly or for granted. And just like the "Next year!" people and also because of this year's success, we are already looking forward to the 2015 event.

Sincerely,



Ann James  
Race Co-director with Jean Jackson

RECEIVED

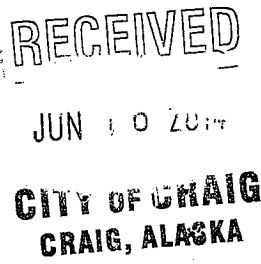
JUN 02 2014

CITY OF CRAIG  
CRAIG, ALASKA



June 16, 2014

Craig City Council  
Craig, AK 99921



To Whom It May Concern:

I am writing to express my gratitude to Amy Marshall and the Craig Public Library. On June 10th and 12th, 2014, I participated in an official bridge inspector training via the OWL telecommunication system at the Craig Public Library. I used the public library telecommunication device because the system at the Forest Service office did not align with the telecommunication devices used for the training. The public library system, however, is set up to align with various telecommunication systems. Amy and the Public Library's OWL telecommunication system allowed me to successfully participate in the conference and complete my course.

I want to clearly state that I would not have been able to participate in this course if it was not for Amy's commitment to setting up the device and working with the OWL technicians to ensure that all of the systems—visual, audio and interactive video—operated correctly and continuously for two full days. Amy worked with me and the conference IT folks to prepare the system before the day of the training. She opened the library early on the two days of the training and had everything set up and ready to go when I arrived. This amazing service made what could have been a very stressful and unsuccessful experience a positive one.

Telecommunications allow individuals, like me, to participate in conferences and programs far from home without the expense of traveling to the conference site. With tightening budgets and limited resources, virtual attendance of trainings and conferences will increase. The Craig Public Library telecommunication system is a great value and resource to local citizens because it is a leader in providing these services.

Thank you all for your support of the Craig Public Library and its technology system.

Respectfully,

A handwritten signature in black ink that reads "Victoria Houser".

Victoria Houser  
Prince of Wales Island Recreation Planner  
Tongass National Forest  
PO Box 500  
Craig, AK 99921

## **CITY OF CRAIG MEMORANDUM**

To: Craig City Council  
From: Jon Bolling, City Administrator  
Date: July 11, 2014  
RE: Ice House Repairs

---

Two ice house items merit the council's attention and action.

### I. Recent Repairs.

Recently the Craig Public Ice House suffered a number of near simultaneous mechanical breakdowns, including the unrepairable failure of the compressor that drives the second ice drum; a failed component on the smaller compressor that chills the ice bin, and a failure of a timer that operates the ice rake. The second and third of these items were addressed in fairly short order, and at a relatively low cost. The first item, complete failure of the compressor driving the ice making bin, is another matter. While this failure too is now repaired, the cost to replace the unit, and the loss to the fishing fleet due to reduced ice availability, is substantial.

I notified the city council by e-mail on June 30 of the mechanical failures and the need to affect immediate repairs, given that this time of year is the peak time for ice demand, and would come to the council on July 17 to request an appropriation to cover the repair costs.

Alaska Industrial Refrigeration completed repairs on the two compressors. Staff has yet to receive an invoice from the company but I estimate the emergency repair costs at \$55,000. AIR's verbal estimate before the work began was approximately \$45,000, but I do not know yet if their costs have exceeded that amount. Council authorization of \$55,000 allows for some margin of additional cost should AIR be able to justify the increased amount over their estimate.

On a related note, AIR will produce a written report on their view of the likely causes of the failure of the ice drum compressor. This report will be useful in determining if operational shortcomings or improperly rebuilt equipment were the cause of the compressor failure.

### II. Additional Work on Expansion Project

As the council is aware, the project to expand the ice storage bin begins September 15. The refrigeration technician at Seafood Producers Cooperative, who is working on the city's behalf to oversee the project, recently recommended that the city replace the evaporator fans that circulate air within the ice bin. I am told that the evaporators are nearing the end of their useful life and given the range of changes already being made to the ice bin that replacing the evaporator fans now is prudent.

I will have back up materials for both of these appropriation requests to you prior to the scheduled July 17 meeting.

**Recommendation**

- I. That the council authorize an appropriation of up to \$55,000 to complete emergency repairs at the Craig Public Ice House.
- II. That the council authorize funding to replace the evaporator fans at the Craig Public Ice House.

# Memo

To: Mr. Mayor, Craig City Council

From: Ron McIntosh, Public Works Director

CC: Jon Bolling, City Administrator

Date: July 2, 2014

Re: Bid Results for Solid Waste Collection Truck

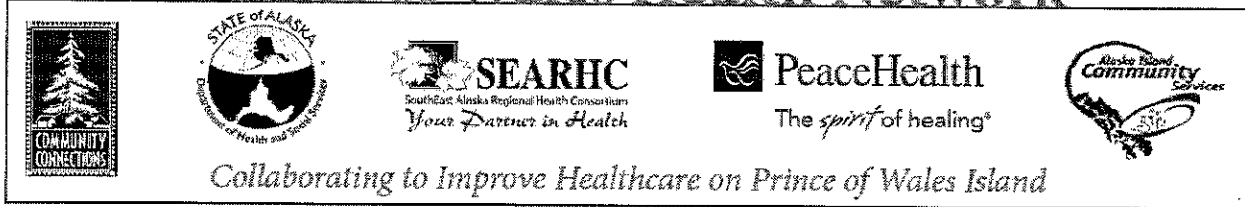
---

Bids are due on July 16, 2014 for the Side Loading Automated Solid Waste Collection Truck.

The City will open bids after 10AM Wednesday July 16<sup>th</sup>, 2014, the bid deadline.. The bids will be reviewed and information compiled for Council action on July 17, 2014.

RCMc

# Prince of Wales Health Network



PO Box 812 — Craig, Alaska 99921 — [www.powhealthnetwork.org](http://www.powhealthnetwork.org)

June 4, 2014

Alaska Community  
Island Services  
Mark Walker  
*Executive Director*

Craig City Council  
PO Box 725  
Craig, Alaska 99921

SEARHC  
Janice Sheufelt, MD  
*Medical Director*

To Mayor Watson and Members of the Craig City Council,

Joyce Moore, Admin  
Alicia Roberts Medical  
Center

Since 2008, the Prince of Wales Health Network has been bringing together various healthcare related entities across Prince of Wales Island to work in collaboration to strengthen healthcare on our island, increase access to care, and focus our collective resources to achieve specific goals.

Community Connections  
Bess Clark  
*Executive Director*

The POW Health Network was originally established through a grant from the Health Resources and Services Administration of the US Department of Health and Human Services. This grant funding ended in May 2014, but the need for this collaborative effort on Prince of Wales has not ended.

Abbie Blackshire  
*Deputy Director*

Committed to continuing the Network's collaborative efforts in the future, the Network's five key healthcare partners have pledged \$107,000 in cash and in-kind support. However, an additional \$24,900 is necessary to pay for the staffing needed to coordinate and carry out various health initiatives across the island in the next year.

PeaceHealth  
Michele Budd  
*VP Ambulatory Services*

Peter Rice, MD  
*Medical Director*

The POW Health Network has been effectively improving healthcare for those living on Prince of Wales. With key partnering agencies working creatively and cooperatively together, we've been able to identify, address and meet significant health needs in communities across Prince of Wales.

Patrick Ballard, DO

Public Health  
Colleen Watson, RN

I respectfully ask that you consider providing \$2,500 funding to help continue this important work here in Craig and across Prince of Wales Island.

Kara McClory, RN  
*Immunization Initiative  
Chair*

Thank you,

POW Health Network  
Gretchen M. Klein  
*Executive Director*

Gretchen M. Klein  
*Executive Director*

# Prince of Wales Health Network



*Collaborating to Improve Healthcare on Prince of Wales Island*

**WHAT:** The Prince of Wales Health Network is a collaborative effort between Southeast Alaska Regional Health Consortium (SEARHC) Alicia Roberts Medical Center, State of Alaska Craig Public Health Center, Community Connections, Alaska Island Community Services (AICS) and PeaceHealth Medical Group Prince of Wales.

The mission of the Prince of Wales Health Network (POWHN) is to build a strong and sustainable network of healthcare organizations collaborating to strengthen the healthcare system on Prince of Wales Island and increase access to quality healthcare for all island residents far into the future.

**WHY:** Since the start of the POW Health Network's efforts on the Island, the collaboration in healthcare has increase substantially and many important needs have begun to be discussed and met by the partners. Resources have been combined for a number of effective initiatives and partnerships including: immunization initiative; the Green Dot campaign; annual health fair in Craig, ETC. The Network also gives healthcare systems on the island a joint voice at the state and regional level through advocacy and the supportive nature of the partnership.

**WHY NOW:** For the past six years, the POW Health Network has been funded in large part through a generous grant from the Health Resources Administration. Grant funding ran out as of May 2014 and the Network is required to be self-sufficient as of May 2014. If the network also wants to apply for future grants, a local match is necessary for grant applications.

**WHO:** Looking to participating agencies and community members, the Network must raise the funding necessary to continue it healthcare collaboration efforts:

- Five key partners in the Network have collectively committed to \$36,000 in cash funding and \$71,000 of in-kind support.
- PeaceHealth will be the Host Organization of the POW Health Network, helping keep the overhead expenses very low.
- POW Health Network fund was established at the Alaska Community Foundation (ACF) to accept donations from individuals and businesses.

*"The Health Network is a wonderful opportunity to identify needs and come up with solutions with a global holistic perspective. It has been a rewarding process to be able to address mental and behavioral health needs, social support systems, family wellness, acute and chronic care as well as preventive services with a united front. I am very excited about the great potential we have with this unique network of dedicated and caring health care providers and community members."*

*—Steering Committee Member  
Colleen Watson RN, PHN.*

**HOW MUCH:** An additional \$24,900 is necessary to keep the network operating with a part-time person helping to coordinate, plan, and orchestra many of the population health initiatives, Behavioral Health Coalition, and outreach throughout Prince of Wales. The total amount of \$60,900 cash will keep the network staffed July 2014- July 2015.

The POW Health Network is calling on individuals, tribes, and businesses to help the Network continue this extraordinary work by helping to raise the remaining \$24,000 necessary to enable the Network to become self-sustaining and continue its work for POW.



**WHERE:** Tax-deductible donations can be written directly to the POW Health Network fund at the Alaska Community Foundation at [www.alaskacf.org](http://www.alaskacf.org) or by mail to ACF, 3201 C Street, Suite 110, Anchorage, Alaska 99503. A tax deduction letter is received from the donation. All donations to this fund directly support the POW Health Network. Donors will be recognized on the POW Health Network website, Facebook, and on Alaska Community Foundation Circle of donors during the year the donation was made.

**GOALS FOR 2014-2015 WITH YOUR DONATION:** With adequate funding, POW Health Network will be able to improve awareness of services and enhance the connectivity of Behavioral Health with outreach in rural areas of POW. Work will continue regarding improving the immunization rates and support will be given to the Suicide Prevention Task Force, SART team, Green Dot Initiative, and Veterans Service Representatives. Additionally, efforts to integrate Behavioral Health into the Primary Care setting will be improved with this collaborative partnership.

**PROJECTED EXPENSE BUDGET**

<u>Personnel and Fringe</u>	<u>Direct Costs</u>	<u>In-Kind Contributions</u>
Network Director 0.5FTE	\$40,000	\$0
Fringe Benefits @ 32%	\$12,800	\$0
Clerical Assistant for N.D. (0.2FTE)	\$0	\$4,000 (Member Agency)
Volunteer Time (mtgs. & events)	\$0	\$28,200 (See separate page for details)
<u>Travel</u>		
Network Dir. POW Mileage	\$1,000	\$0
Network Member Mileage to host POW community mtgs.	\$0	\$1,000 (Member Agencies)
Beh. Health Adv. Comm. Travel	\$0	\$1,000 (Member Agencies)
Governing Body Travel for Mtgs. (4 mtgs./year)	\$0	\$6,440 (SEARHC-\$2,280; Peace Health-\$2,160; AICS-\$2,000)
<u>Supplies</u>		
Office Supplies	\$1,000	\$0
Marketing Materials	\$2,000	\$2,000 (Member Agencies)
Cell Phone	\$300	\$0
<u>Other</u>		
Office Rent	\$0	\$6,000 (Craig Public Health)
Office Utilities and Phone	\$0	\$2,400 (Craig Public Health)
Community Mfg. Space	\$0	\$6,700 (SEARHC-\$1,500; Peace Health-\$1,500; Klawock Mall Church - \$1,200; Public Health-\$1,500; T.Bay Library-\$500; HCA-\$500)
Cell Phone & Internet	\$2,800	\$0
Postage and PO Box Rental	\$200	\$0
Meeting Expenses/Food	\$500	\$500 (Member Agencies)
Website	\$300	\$0
Marketing Technical Assistance	\$0	\$10,000 (SEARHC-\$5,000; Peace Health-\$5,000)
Usage of Video Conf. Equip.	\$0	\$1,000 (Community Connections-\$500; Peace Health-\$500)
Project Mgmt. (payroll, accounts Payable, etc.)	\$0	\$2,500 (Peace Health)
<b>TOTAL</b>	<b>\$60,900</b>	<b>\$71,740</b>

**PROJECTED INCOME BUDGET FROM PARTNERING AGENCIES, CORPORATE, AND INDIVIDUAL, TRIBAL, AND OR GOVERNMENTAL. TOTAL PROJECTED INCOME - \$60,900**

## CITY OF CRAIG MEMORANDUM

To: Craig City Council  
From: Jon Bolling, City Administrator  
Date: July 10, 2014  
RE: Consider Final Terms, Land Exchange with Chris Piburn

---

In January of this year, the council approved an ordinance authorizing city staff to negotiate the terms of a land exchange with Chris Piburn. As is the city's practice, the final terms of any trade agreement are subject to approval of the city council.

To recap, Mr. Piburn proposes to trade a portion of the property he owns adjacent to West Hamilton Drive, and which the city desires to acquire to eventually widen West Hamilton Drive to 45 feet, in exchange for what is now city-owned tideland adjacent to his West Hamilton Drive lot. Mr. Piburn's goal is to develop his remaining uplands, combined with the city-owned tidelands into a private float and adjacent commercial use and living quarters.

As required by the city's municipal code, Mr. Piburn hired Horan and Company to appraise the properties subject to the exchange. The appraiser concludes that the upland property owned by Mr. Piburn has a value of \$10 per square foot. The tidelands Mr. Piburn seeks from the city are valued at \$2.50 per square foot. The table below summarizes the square footage and associated values subject to the proposed exchange.

	<b>Value/ sq. ft.</b>	<b>Area (sq. ft.)</b>	<b>Land Value</b>
<b>City Tidelands</b>	\$2.50	15,842	\$39,605.00
<b>Piburn Uplands</b>	\$10.00	1,985	<u>\$19,850.00</u>
Tideland value in excess of upland value:			\$19,755.00

Based on the square footage proposed by Mr. Piburn, a cash payment of approximately \$19,755 would be owed to the City of Craig to complete the exchange.

In addition to the cash payment, Mr. Piburn will also need to prepare a plat for review by the Craig Planning Commission showing the new property lines resulting from the proposed exchange; after approval of the plat, the city would deed its interest in the subject tidelands to him, and the exchange would be complete.

### Dredging

On a related note, city staff has worked closely with the owners of Shelter Cove Lodge on the proposed land exchange. The lodge's owners have voiced their concern that the proposed Piburn development will impede access to the adjacent private docks used by the lodge and Phoenix Logging due to the width of the existing channel. City staff has worked with both the lodge owner and Mr. Piburn to either reposition Piburn's proposed docks or help arrange for dredging a portion of the entrance to South Cove Harbor. After talking with the two parties it is clear the dredging is the best way to meet the needs of both. To that end city staff contacted the US Army Corps of Engineers, and that agency has cleared the way for dredging of the portion of South

Cove between the main entrance channel and a point between Mr. Piburn's proposed dock and the existing floats at Shelter Cove Lodge. Staff has talked with both parties about entering into a local improvement district (LID) with the city to have the city pay the up-front cost for the dredging, with the parties benefiting from the dredging repaying for the cost of the work over time. Both parties seem interested in the LID approach. While there is agreement that dredging is needed, there is not yet agreement on how the cost of that dredging should be assigned. The lodge owners have said that the lodge and Phoenix Logging may be able to repay the city for some of the cost, say two-thirds; they also expect Mr. Piburn to pay part of the dredging cost because they believe he benefits from the wider boat channel. Mr. Piburn believes that there is sufficient room for navigation within the existing channel, even after his proposed float system is in place, and therefore sees no benefit to his project from dredging. He does, however, see a need for dredging a portion of the tidelands he hopes to acquire from the city, and is prepared to bear the full cost of that dredging effort.

Two drawings are attached to this memo. The first shows the areas subject to dredging, shaded in black, yellow, and light blue. The second shows the float configuration proposed by Mr. Piburn for the eventual development of the property he hopes to acquire from the city. The second drawing also shows the 12' by 166.54' portion of his lot adjacent to West Hamilton Drive sought by the city.

The lack of agreement at this point over what should be dredged and who should pay for the dredging requires resolution in the near term. It should not, however, hold up the council's consideration of approval of the final terms of the land exchange proposed by Mr. Piburn. As noted above there are a number of steps involved to complete the exchange, and ideally a resolution as to the assignment of costs can come as those steps are completed.

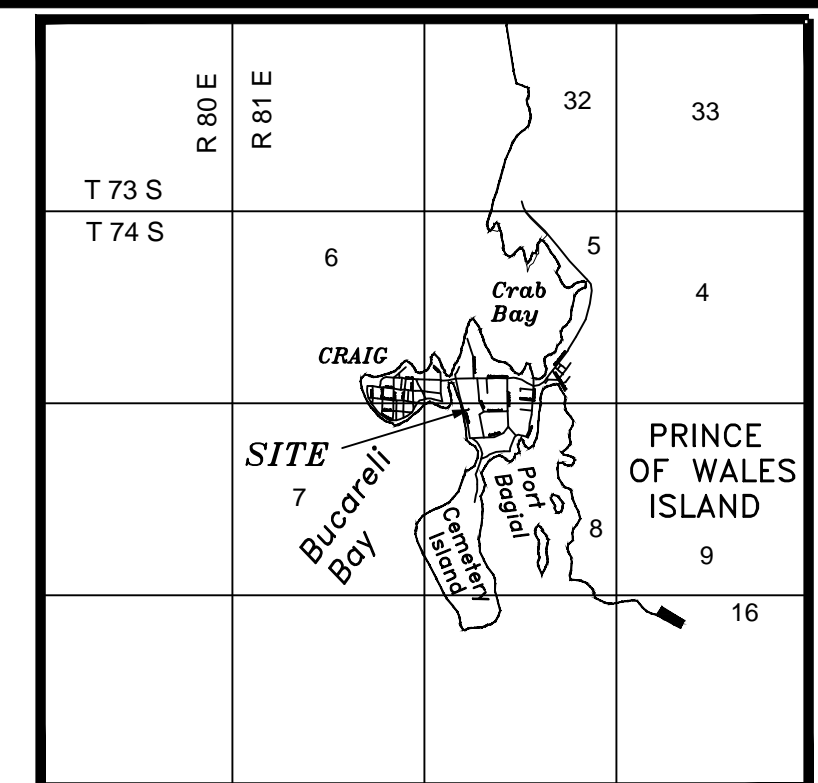
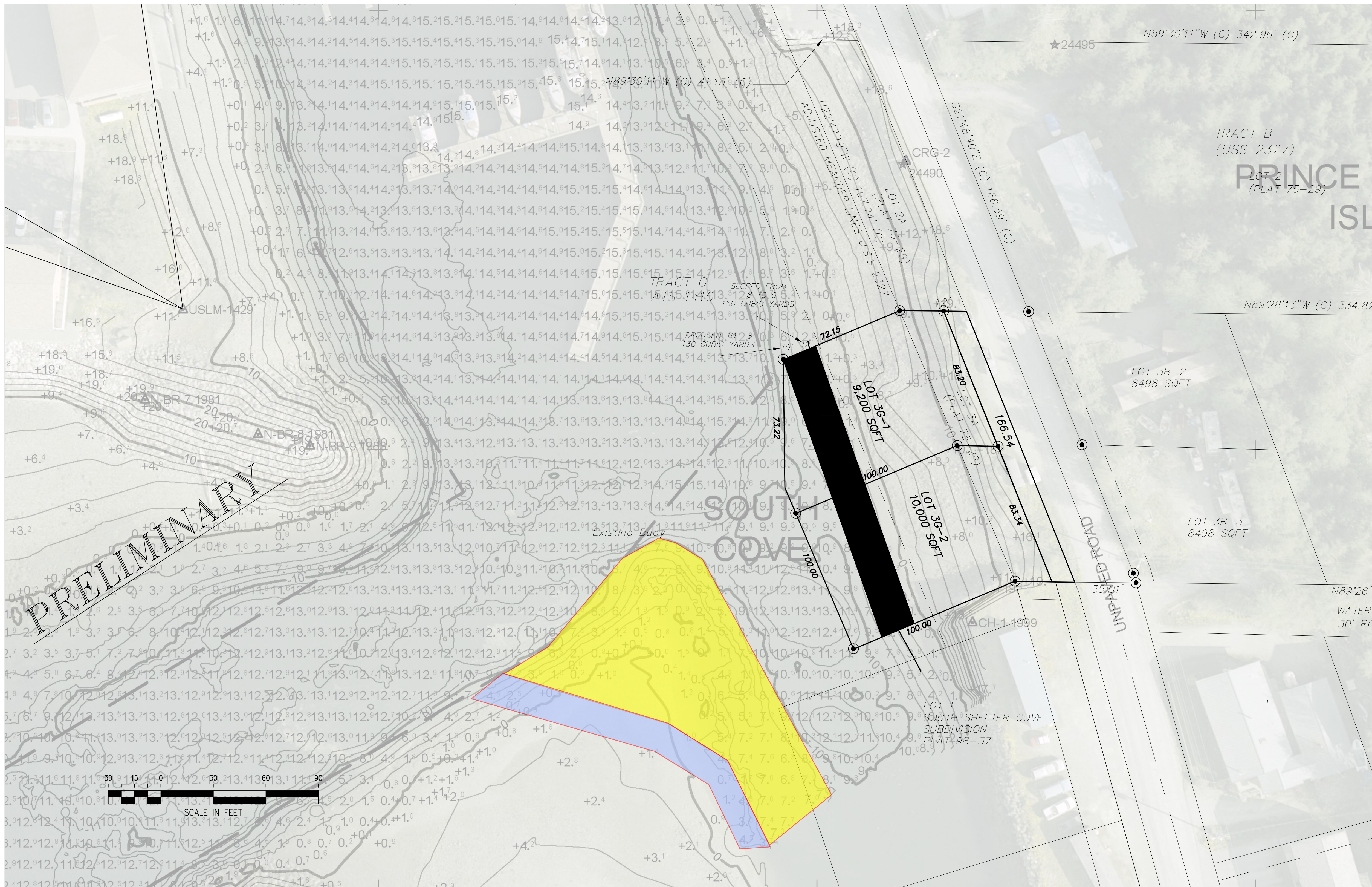
Should both parties continue to show interest in an LID, the city council should consider an ordinance to approve the LID and give direction to staff to implement the district in compliance with the city's municipal code.

### **Recommendation**

That the council approve the final terms of the proposed land exchange between Mr. Chris Piburn, with those final terms being:

1. Mr. Piburn will prepare a plat complying with the criteria of Title 18 of the Craig Municipal Code and submit the plat for consideration by the Craig Planning Commission.
2. Once the final plat is approved, Mr. Piburn will pay to the City of Craig, in cash, the difference in value between the upland property he will trade to the city and the tideland property the city will trade to him, based on the appraised value.
3. Upon approval of the plat and receipt of the cash payment, the city will assign its interest in the tidelands to Mr. Piburn, via quitclaim deed.
4. Staff will deposit receipts from the exchange into the Craig Land Development Fund.

Recommended motion: I move to approve the final terms of the proposed land exchange between the City of Craig and Mr. Chris Piburn, as detailed by staff in its July 10, 2014 memo to the city council.



VICINITY MAP

SCALE: 1 INCH = 1 MILE

SURVEYOR'S CERTIFICATE

I hereby certify that I am properly registered and licensed to practice land surveying in the State of Alaska, that this plat represents a survey made by me or under my direct supervision, that the monuments shown hereon actually exist as described, and that all dimensions and other details are correct.

Date \_\_\_\_\_ Registration Number: LS-6700

Gregory G. Scheff, R.L.S.



KETCHIKAN RECORDING DISTRICT

Revisions	
No.	Description

**R&M ENGINEERING-KETCHIKAN, INC.**  
 355 Carlanna Lake Road  
 Ketchikan, AK 99901  
 Phone: (907) 225-7917  
 Fax: (907) 225-3441

**WRANGELL OFFICE**  
 P.O. BOX 1331  
 Wrangell, AK 99929  
 Phone: (907) 874-2177  
 Fax: (907) 874-2187

PROJECT:  
**PIBURN SUBDIVISION**  
 THE SUBDIVISION OF LOT 3A  
 PLAT 75-29, A SUBDIVISION OF  
 TRACT B OF U.S.S 2327.

NOTES

**CERTIFICATE OF IMPROVEMENTS**  
 NO IMPROVEMENTS ARE REQUIRED FOR THE VACATION/REPLAT

PUBLIC WORKS DIRECTOR \_\_\_\_\_ Date \_\_\_\_\_

CITY PLATTING OFFICIAL \_\_\_\_\_ Date \_\_\_\_\_

**APPROVAL SIGNATURES**

This final subdivision plat has been reviewed and approved in accordance with the Craig Land Development Code - Subdivision Ordinance. All dedications to the public have been inspected and accepted by the City of Craig.

City Platting Official \_\_\_\_\_ Date \_\_\_\_\_

Presiding Officer - Planning Commission \_\_\_\_\_ Date \_\_\_\_\_

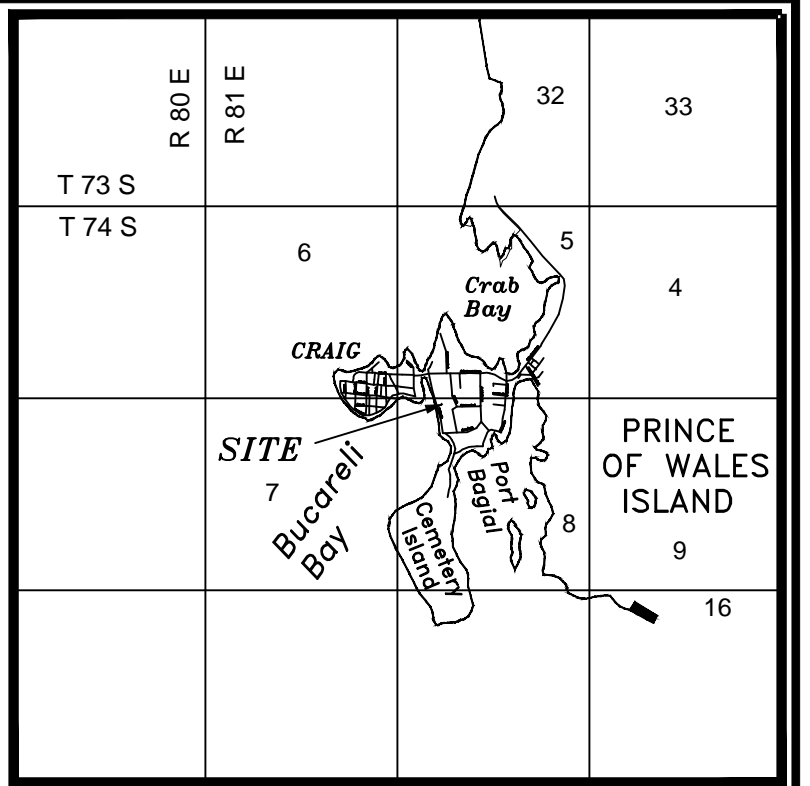
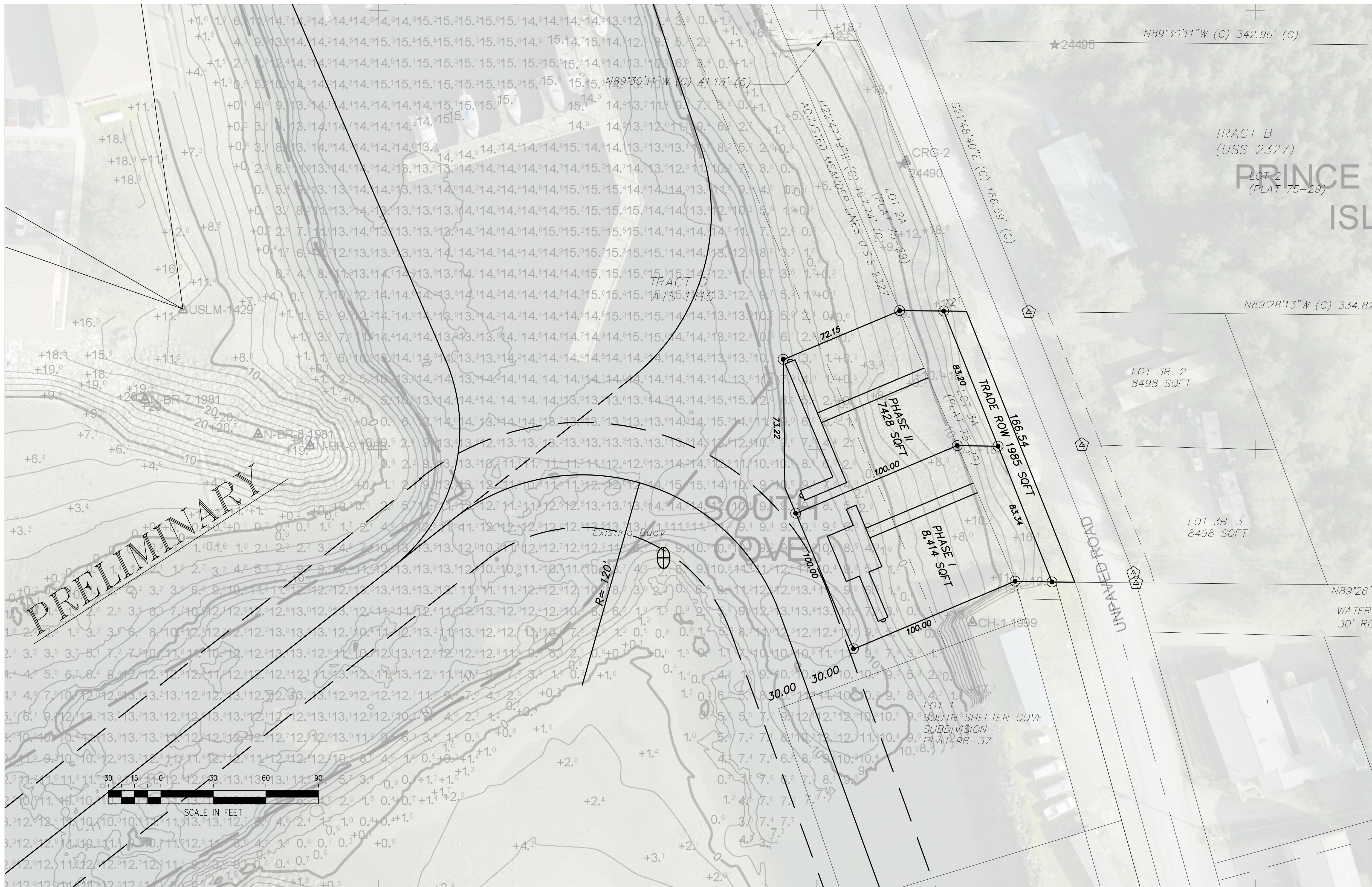
Planning Commission Member \_\_\_\_\_ Date \_\_\_\_\_

**TAX STATEMENT**

I hereby certify that all ad valorem taxes, special assignments and other charges required by law to be placed on the tax roll have been paid.

City Clerk \_\_\_\_\_ Date \_\_\_\_\_

CLIENT:	Chris and Chaundell Piburn Box 445 Klawock AK. 99925.
DATE:	03/04/14
SCALE:	1"=30'
DRAWN BY:	C.G.P.
JOB NO.:	XXXXXX
APPRVD BY:	G.G.S.
SHEET:	1 OF 1



VICINITY MAP

SCALE: 1 INCH = 1 MILE

SURVEYOR'S CERTIFICATE

I hereby certify that I am properly registered and licensed to practice land surveying in the State of Alaska, that this plat represents a survey made by me or under my direct supervision, that the monuments shown hereon actually exist as described, and that all dimensions and other details are correct.

Date \_\_\_\_\_ Registration Number: LS-6700

Gregory G. Scheff, R.L.S.



KETCHIKAN RECORDING DISTRICT

Revisions	
No.	Description

**R&M ENGINEERING-KETCHIKAN, INC.**  
 355 Carlanna Lake Road  
 Ketchikan, AK 99901  
 Phone: (907) 225-7917  
 Fax: (907) 225-3441

**WRANGELL OFFICE**  
 P.O. BOX 1331  
 Wrangell, AK 99929  
 Phone: (907) 874-2177  
 Fax: (907) 874-2187

PROJECT:  
**PIBURN SUBDIVISION**  
 THE SUBDIVISION OF LOT 3A  
 PLAT 75-29, A SUBDIVISION OF  
 TRACT B OF U.S.S 2327.

NOTES

**CERTIFICATE OF IMPROVEMENTS**  
 NO IMPROVEMENTS ARE REQUIRED FOR THE VACATION/REPLAT

PUBLIC WORKS DIRECTOR \_\_\_\_\_ Date \_\_\_\_\_

CITY PLATTING OFFICIAL \_\_\_\_\_ Date \_\_\_\_\_

**APPROVAL SIGNATURES**

This final subdivision plat has been reviewed and approved in accordance with the Craig Land Development Code - Subdivision Ordinance. All dedications to the public have been inspected and accepted by the City of Craig.

City Platting Official \_\_\_\_\_ Date \_\_\_\_\_

Presiding Officer - Planning Commission \_\_\_\_\_ Date \_\_\_\_\_

Planning Commission Member \_\_\_\_\_ Date \_\_\_\_\_

**TAX STATEMENT**

I hereby certify that all ad valorem taxes, special assignments and other charges required by law to be placed on the tax roll have been paid.

City Clerk \_\_\_\_\_ Date \_\_\_\_\_

CLIENT:	Chris and Chaundell Piburn Box 445 Klawock AK. 99925.
DATE:	03/04/14
SCALE:	1"=30'
DRAWN BY:	C.G.P.
APPRVD BY:	G.G.S.
JOB NO.:	XXXXXX
SHEET:	1 OF 1

## **CITY OF CRAIG MEMORANDUM**

To: Craig City Council  
From: Jon Bolling, City Administrator  
Date: July 11, 2014  
RE: Ice House Agreement with Seafood Producers Cooperative

---

Attached you will find a draft agreement between the City of Craig and Seafood Producers Cooperative. The agreement provides for a SPC employee to staff the city's ice house during the summer season. This arrangement will provide for extended hours of ice delivery and also allow Craig Harbor Department staff to tend to other duties during the peak of the boating season.

The agreement is set for 2014 only. We will judge the efficacy of the agreement at the end of the fishing season and talk with SPC on the merits of entering into a new agreement in 2015. SPC staff has already offered a suggested approach to ice house operation and maintenance in 2015 and beyond. I will discuss this approach with them in more detail in September.

Until then, the attached agreement, if approved, will remain in effect until the end August. SPC staff will man the ice house at the direction of Craig Harbor Department staff, with a 500 hour maximum limit on SPC staff time.

SPC is agreeable to the term on the attached agreement. Should the council concur, I will sign the agreement and have Craig Harbor Department staff implement the agreement.

### **Recommendation**

Approve, by motion, the 2014 contract agreement between the City of Craig and Seafood Producers Cooperative to operate the Craig Public Ice House.

## **CONTRACT AGREEMENT CRAIG PUBLIC ICE HOUSE**

### **A. Summary**

This contract agreement, between the City of Craig, whose address is PO Box 725 Craig, AK 99921 (hereafter "City"), and Seafood Producers Cooperative, whose address is 507 Katlian Street - Sitka, AK 99835 (hereafter "SPC") sets out the terms of work described below, and constitutes a binding agreement between City and SPC.

### **B. Scope of Work**

The scope of work is the occasional operation of ice delivery equipment at the Craig Public Ice House, for the purposes of delivering commercial ice to boats and other users. SPC staff will respond to requests from ice customers and the Craig Harbormaster for the delivery of ice each day during the effective dates of this agreement, between the hours of 8 a.m. and 8 p.m. SPC staff will dutifully record each delivery of ice, to include the volume of ice delivered, the boat and/or customer to which the ice is delivered, the date of delivery, time of day of delivery, and hours of SPC staff time spent complying with this scope of work. SPC staff will keep the recorded ice delivery information at a secure location at the ice house facility.

### **C. Start and Completion Date**

This agreement begins July 1, 2014, and ends August 30, 2014.

### **D. Compliance and Warranties**

SPC shall bear all costs transportation to and from the ice house.

### **E. Proof of Insurance**

SPC agrees to provide a certificate of general liability, property liability, commercial liability, auto liability, and excess liability insurance.

### **F. Payment Schedule**

City shall pay to SPC \$20.00 (twenty dollars) per hour of SPC staff time needed to complete the scope of work. Total billable time to the City of Craig by SPC shall not exceed 500 hours under this agreement. Work must be completed in a manner satisfactory to the City. SPC will invoice City upon completion of work.

### **G. Qualification of SPC**

SPC represents that it is duly licensed, qualified, skilled, and regularly engaged in the general class or type of work called for in this agreement.

### **H. Modification**

This agreement may be modified only with the mutual consent of City and SPC, and only in writing.

### **J. Notification**

Official notifications, correspondence, and payment shall be made to the contact names and addresses below.



For SPC: Mr. Craig Shoemaker  
SPC  
507 Katlian St.  
Sitka, AK 99835

For City: Mr. Jon Bolling  
City Administrator  
City of Craig  
PO Box 725  
Craig, AK 99921

**K. Signatures**

By signing below, City and SPC agree to bind themselves in their official capacities to the terms of this agreement.

\_\_\_\_\_  
Craig Shoemaker, Seafood Producers Cooperative

\_\_\_\_\_  
Date

\_\_\_\_\_  
Jon Bolling, City of Craig

\_\_\_\_\_  
Date