

**SUPPLEMENT TO INVITATION FOR BID – April 4, 2019
City of Craig**

**CRAIG NORTH COVE HARBOR LIGHTING REPLACEMENT
RESPONSE TO QUESTIONS AND ADDENDA ITEMS**

BIDS ARE DUE NO LATER THAN 11:00 AM Friday, April 12, 2019

The city received the following questions in response to the Invitation for Bid for this project. Responses to those questions are below. Questions are shown in italicized blue text. Responses are shown in black text.

Q1. Will there be any detail provided on the mounting of the new fixtures and gear?

Response: See note 1 on Page E2 for mounting detail.

Q2. What mounting height will the new fixtures need to be at?

Response: Use existing mounting arms where possible. For new mounting arms, match height of existing fixtures.

Q3. Will any of the heat trace that is being removed have to be reinstalled?

Response: No.

Q4. As there is no scale on the drawings, what is the length of the dock?

Response: A scaled, as-built drawing of North Cove Harbor is attached.

Q5. On plan page E1 General note 6. "All conductors shall be copper ", On plane page E2 note 3. says to provide triplex overhead cables using code word CONCH, this is an alum #2 triplex with the ASCR messenger. Please clarify if this is indeed to be aluminum triplex or is copper to be used? Also can it be from company's other than King Wire Co. if they are equal cables?

Q6. I am not having any luck finding stainless steel pole stand offs, will hot dip glav be allowed on the service pole?

Response to Q5 and Q6:

Sheet E1, GENERAL NOTES AND LEGEND

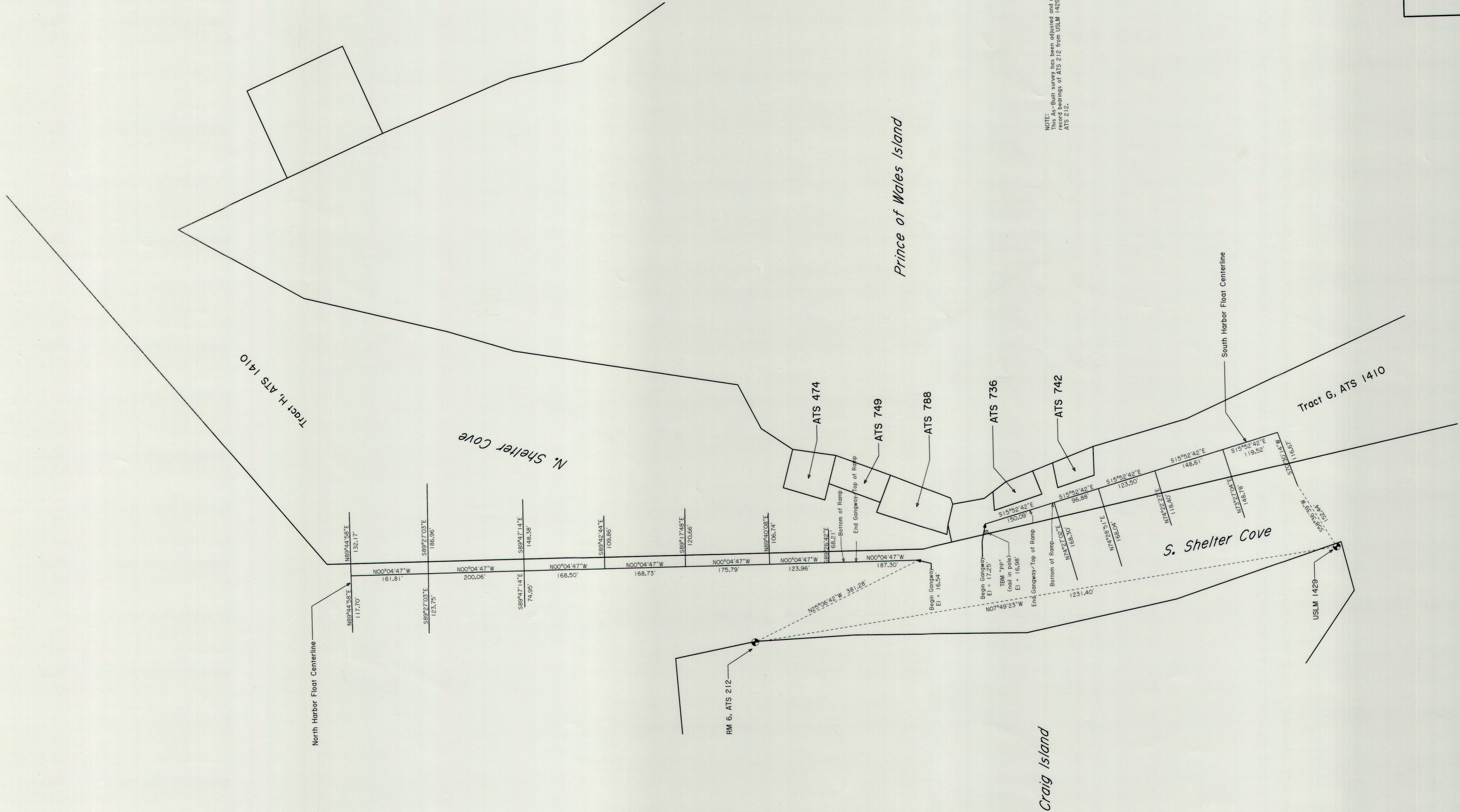
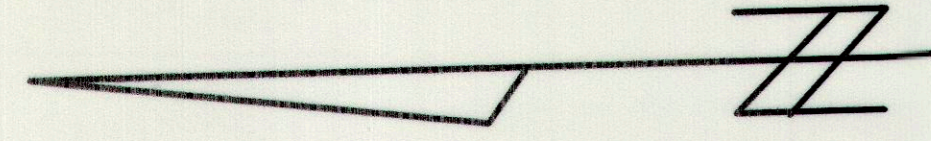
Add the following to note 6: "THE TRIPLEX OVERHEAD CABLE MAY USE ALUMINUM CONDUCTORS, SEE NOTE 3, SHEET E2."

Add the following to note 10. "HOT DIPPED GALVANIZED SUPPORT CHANNEL STANDOFFS ARE ACCEPTABLE FOR THE UTILITY POLE"

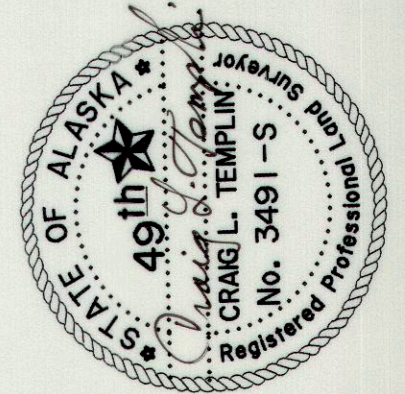
Sheet E2, NEW SITE PLAN LIGHTING LAYOUT

Add the following to note 3: "OR EQUAL. ALUMINUM CONDUCTORS ARE ACCEPTABLE FOR THE OVERHEAD TRIPLEX CABLE."

-END OF PAGE-
-SEE ATTACHED AS BUILT DRAWING-

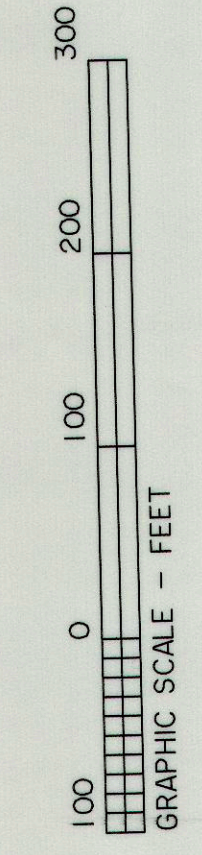


NOTE: This As-Built survey has been adjusted and related to match the bearings of ATS 212 from USLM 1429 Monument to RMG, ATS 212.



AS-Built Survey:

City of Craig, Alaska
 Craig Boat Harbor, Shelter Cove



Surveyed For: Templin Land Surveying
 City of Craig
 Craig, Alaska

Drawn By: BLT
 Scale: 1" = 100'

Checked By: CLT
 Date: 12/14/98