

URS ENGINEERS

Engineering and Environmental Consultants
Juneau Anchorage Seattle

CITY OF CRAIG
CRAIG, ALASKA

SOUTH COVE MARINA
ELECTRICAL SYSTEM UPGRADE

CITY COUNCIL

NELS SODERSTROM
MARY LEE PERKINS
W. DICK JONES
LEE W. JENSEN
DONALD HAMILTON, JR.
DENNIS WATSON

MAYOR

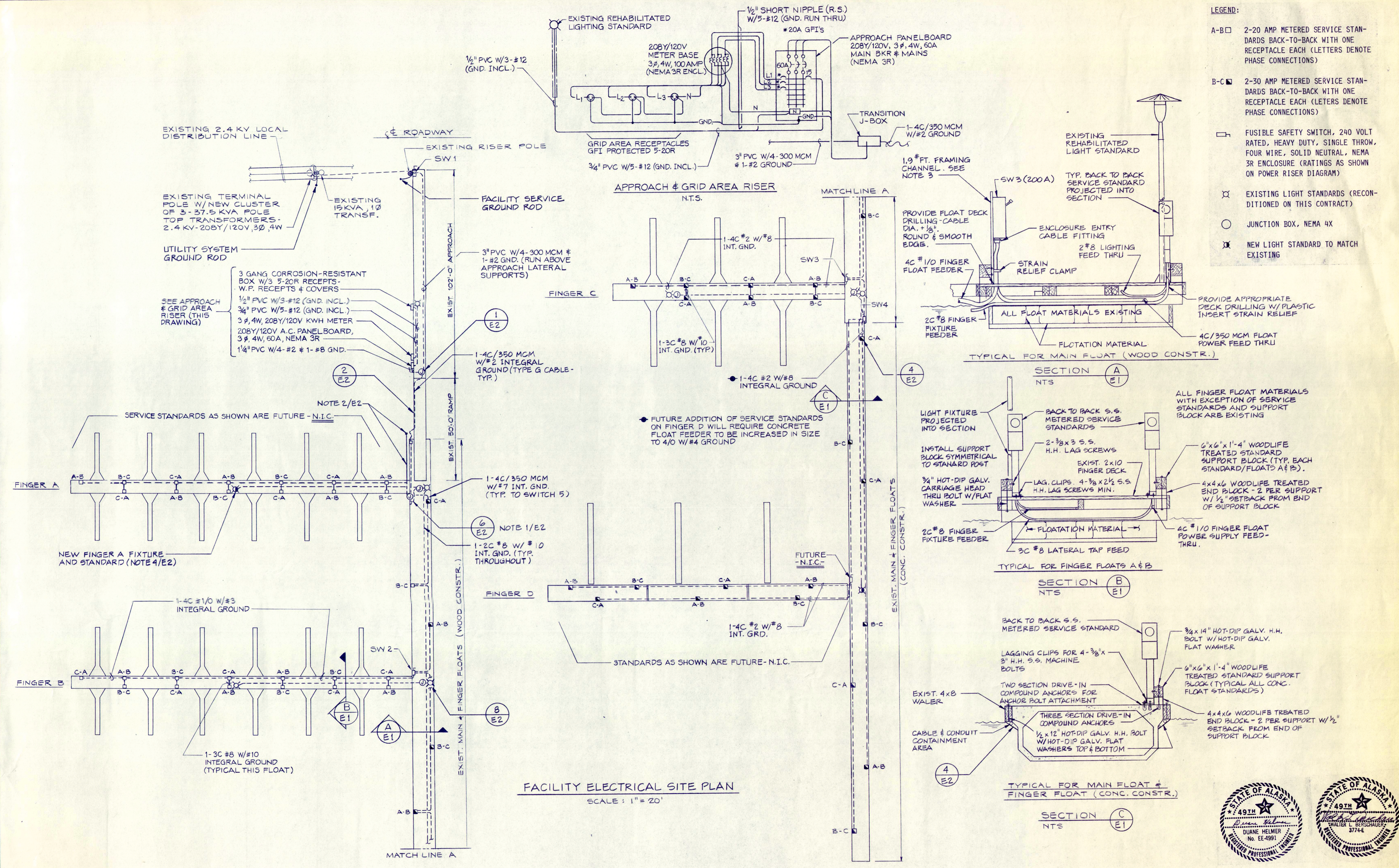
LEE AXMAKER

CITY ADMINISTRATOR

DAVE PALMER

PUBLIC WORKS DIRECTOR

JOE HUDON



- LEGEND:**
- A-B □ 2-20 AMP METERED SERVICE STANDARDS BACK-TO-BACK WITH ONE RECEPTACLE EACH (LETTERS DENOTE PHASE CONNECTIONS)
 - B-C □ 2-30 AMP METERED SERVICE STANDARDS BACK-TO-BACK WITH ONE RECEPTACLE EACH (LETTERS DENOTE PHASE CONNECTIONS)
 - ⊞ FUSIBLE SAFETY SWITCH, 240 VOLT RATED, HEAVY DUTY, SINGLE THROW, FOUR WIRE, SOLID NEUTRAL, NEMA 3R ENCLOSURE (RATINGS AS SHOWN ON POWER RISER DIAGRAM)
 - ⊗ EXISTING LIGHT STANDARDS (RECONDITIONED ON THIS CONTRACT)
 - JUNCTION BOX, NEMA 4X
 - ⊗ NEW LIGHT STANDARD TO MATCH EXISTING

FACILITY ELECTRICAL SITE PLAN
SCALE: 1" = 20'

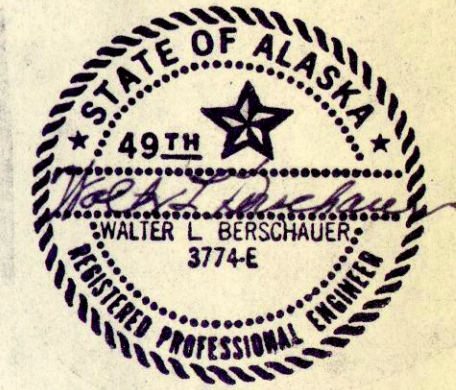
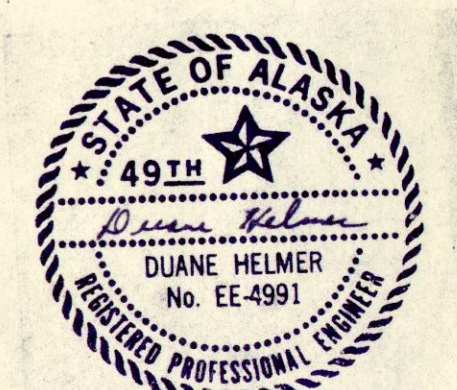
No.	DATE	BY	REVISION
1	5-14-84	DH	REDUCED SCOPE OF WORK PER OWNER REVIEW.

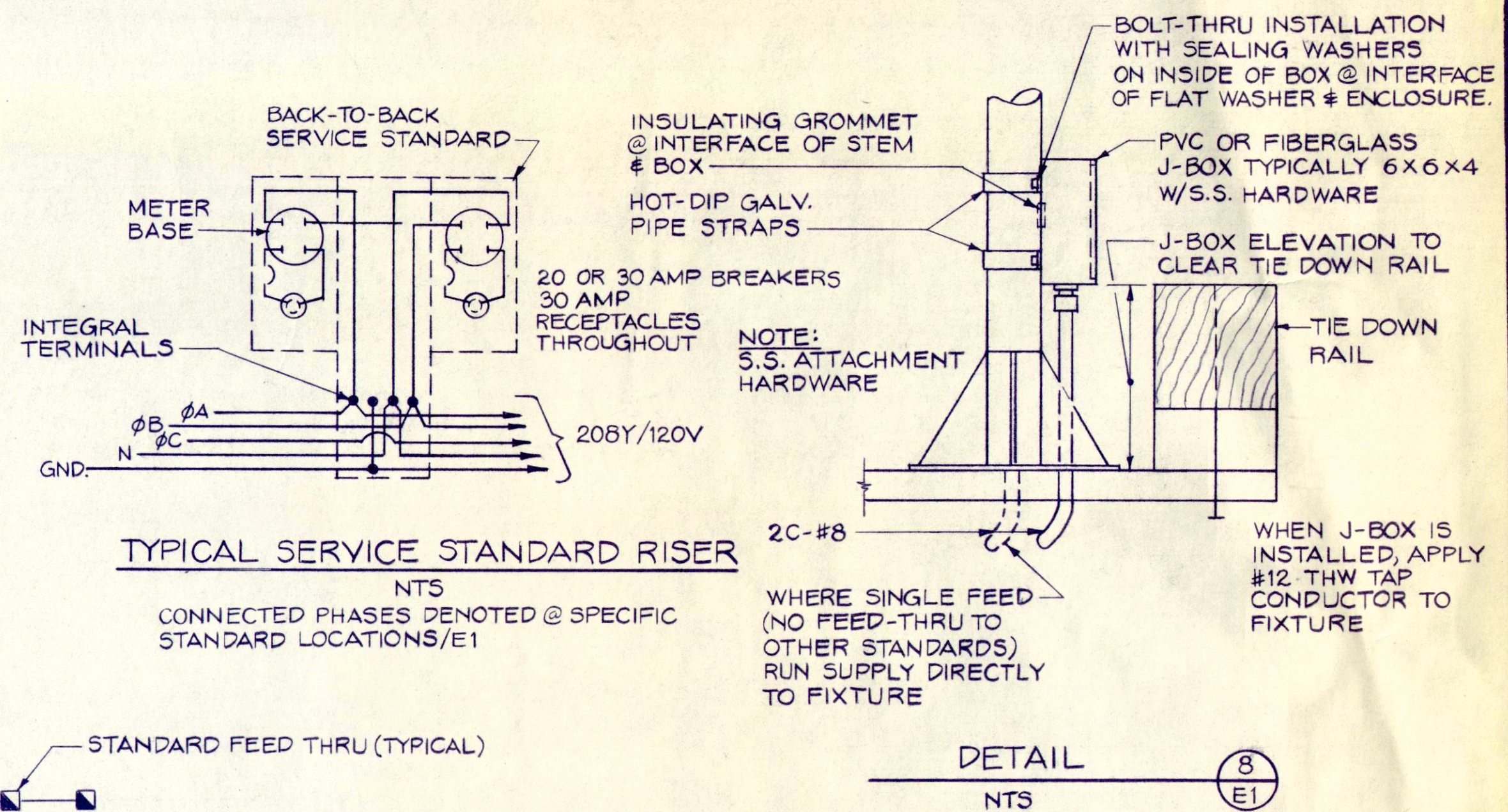
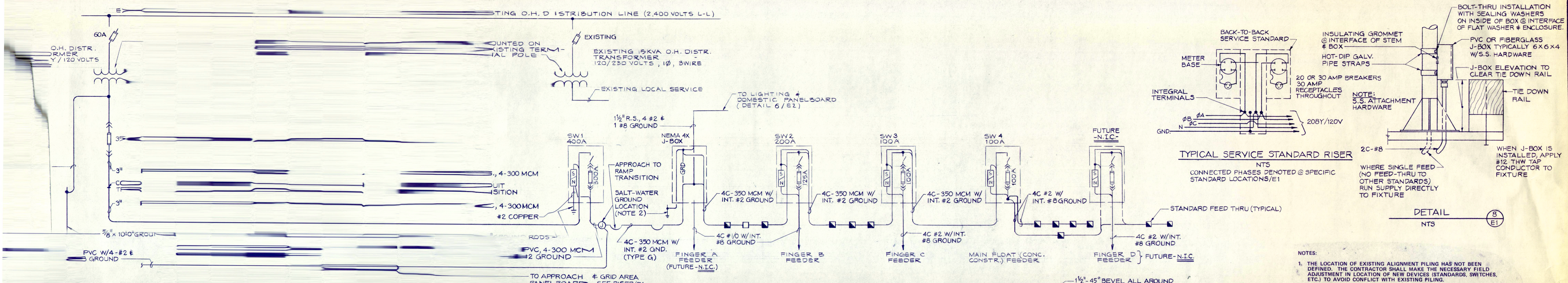
Job No.	4910-6101-03	Designed by	D.H.	Proj. Engr.	G.R.
SCALE	AS SHOWN	Drawn by	M.C., E.P.	Approved by	W.L.B.
		Checked by	D.H.	Date	APRIL 30, 1984

URS ENGINEERS
Engineering and Environmental Consultants
Seattle, Washington

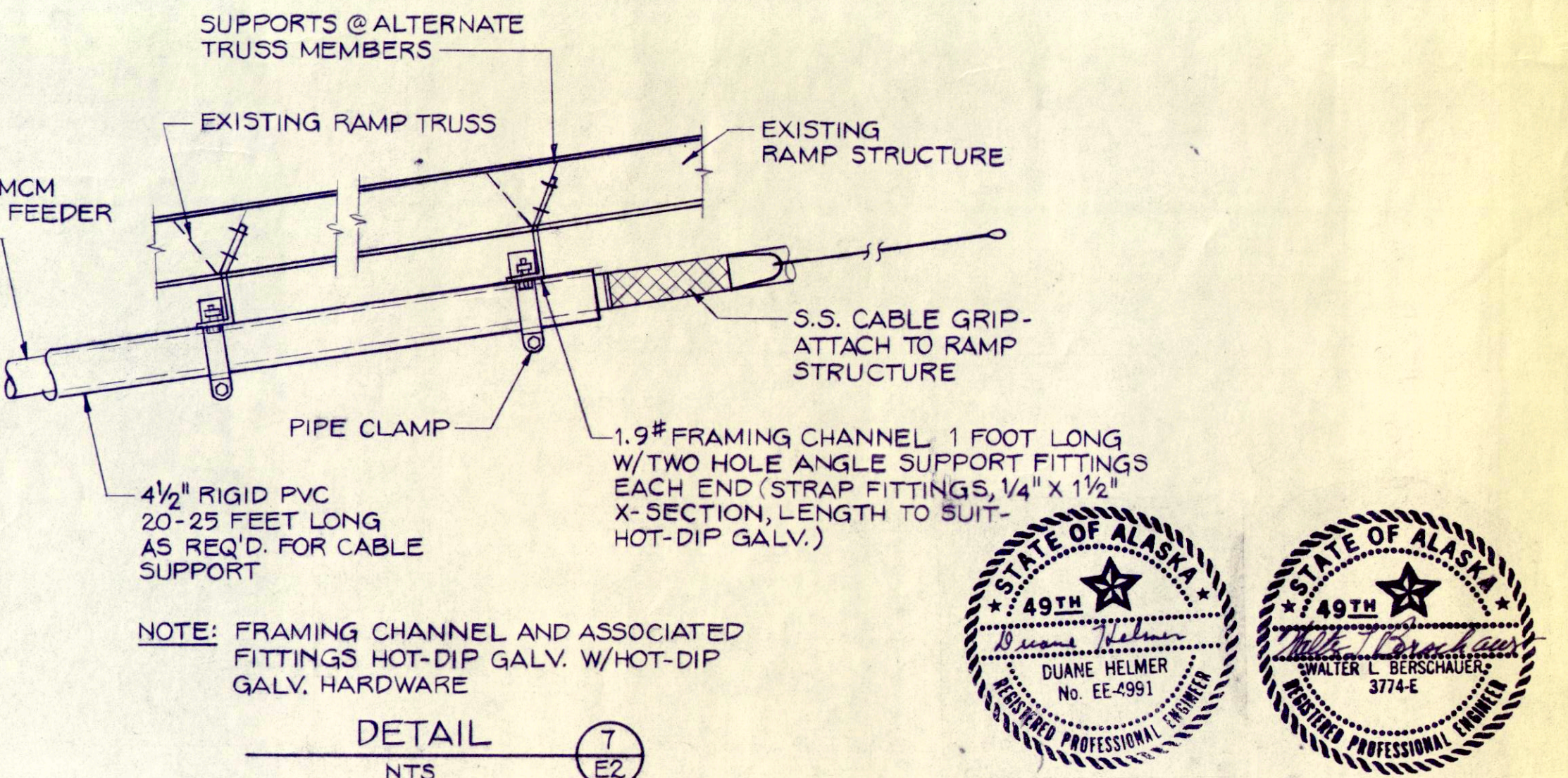
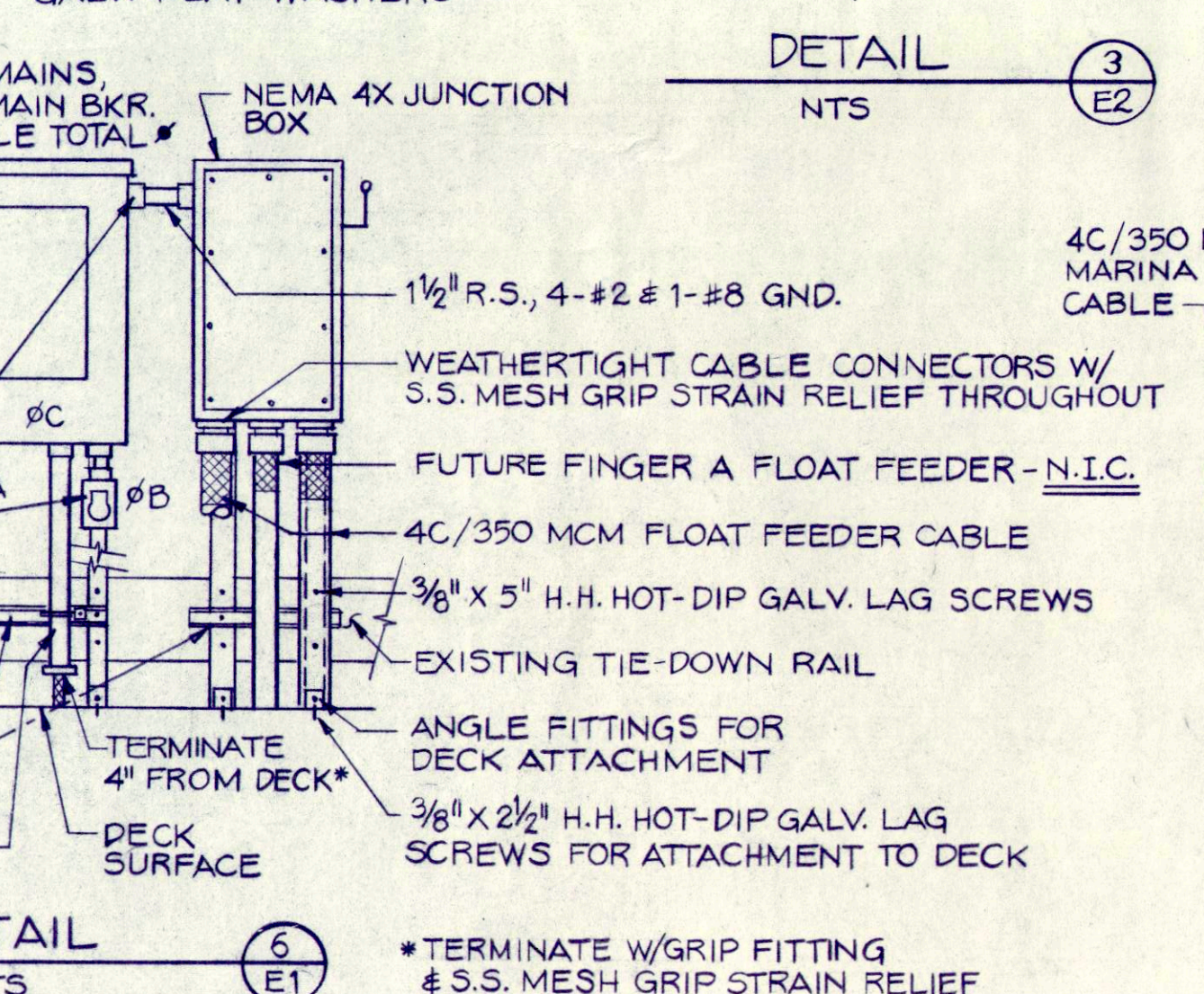
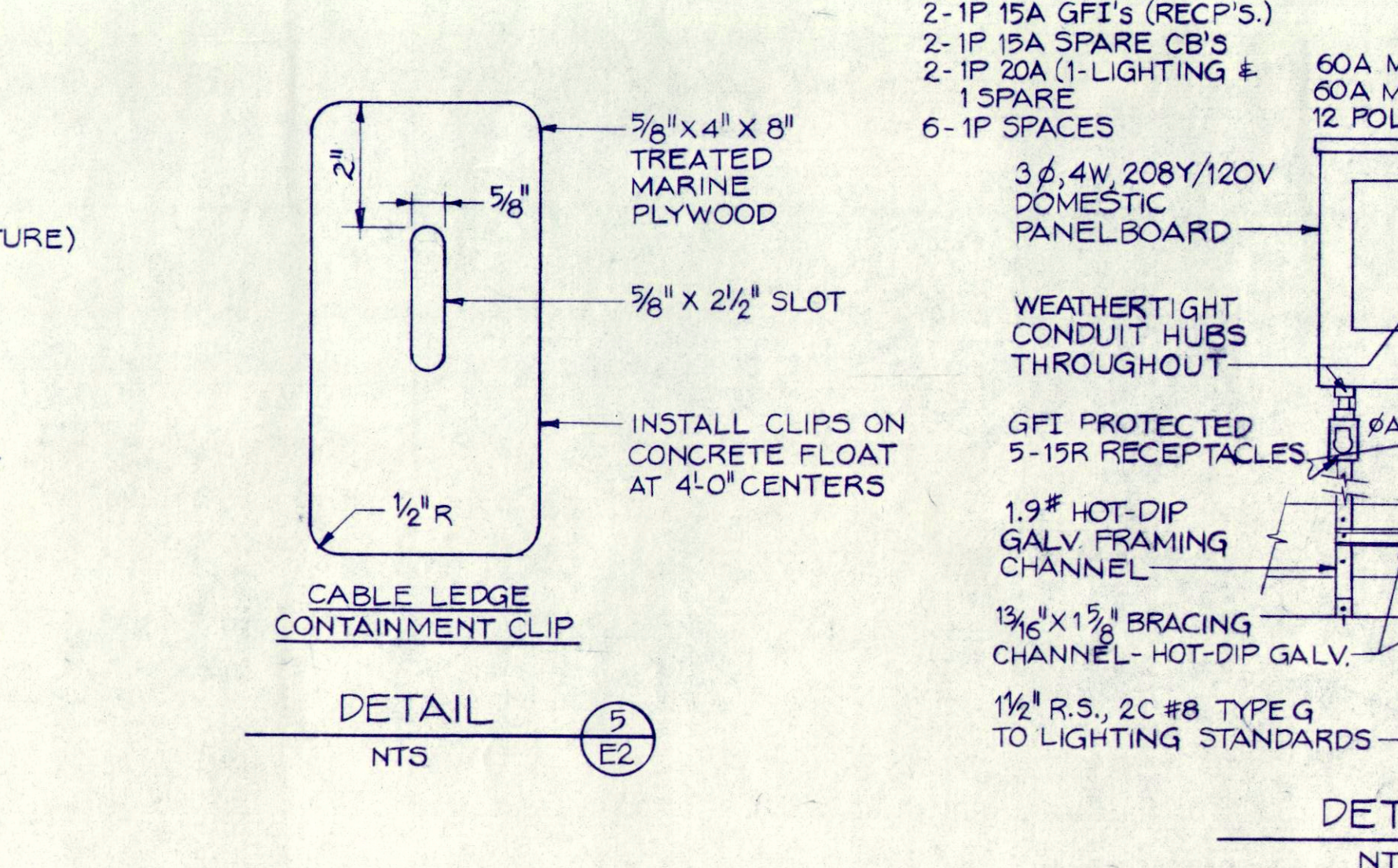
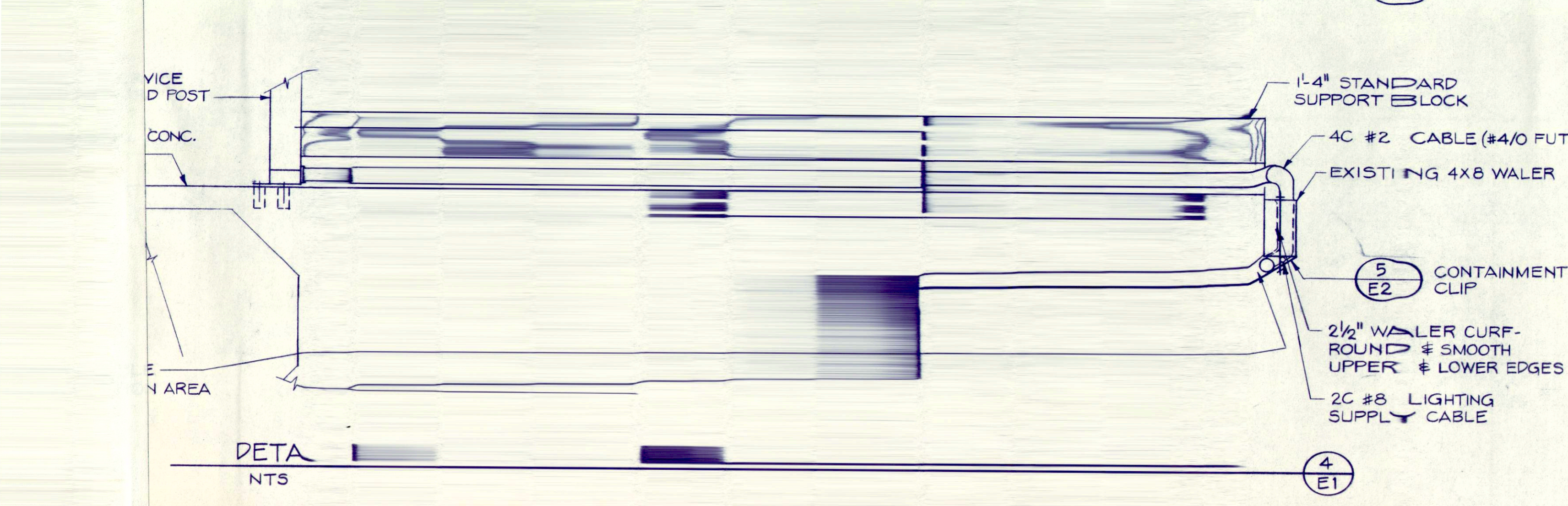
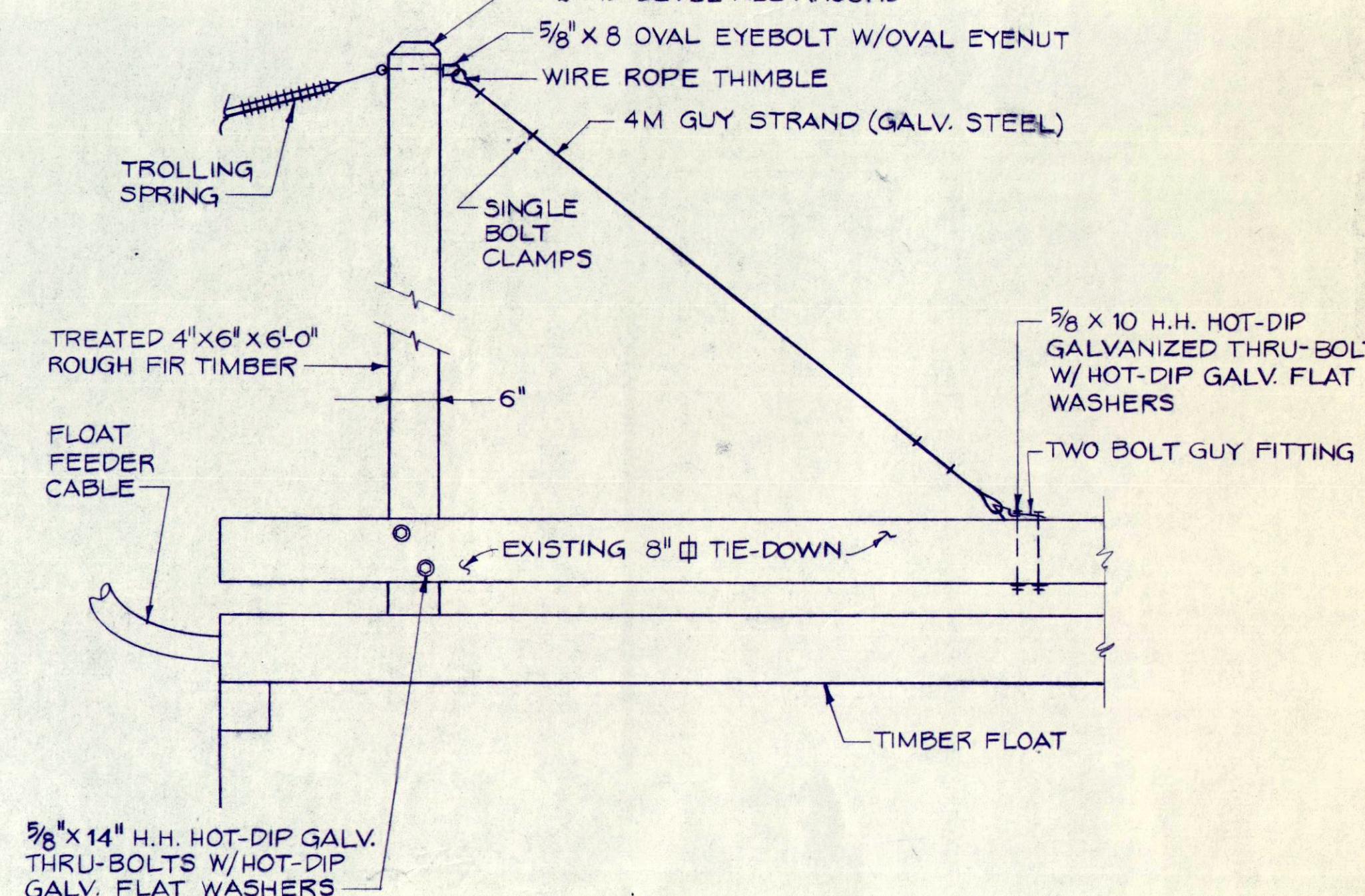
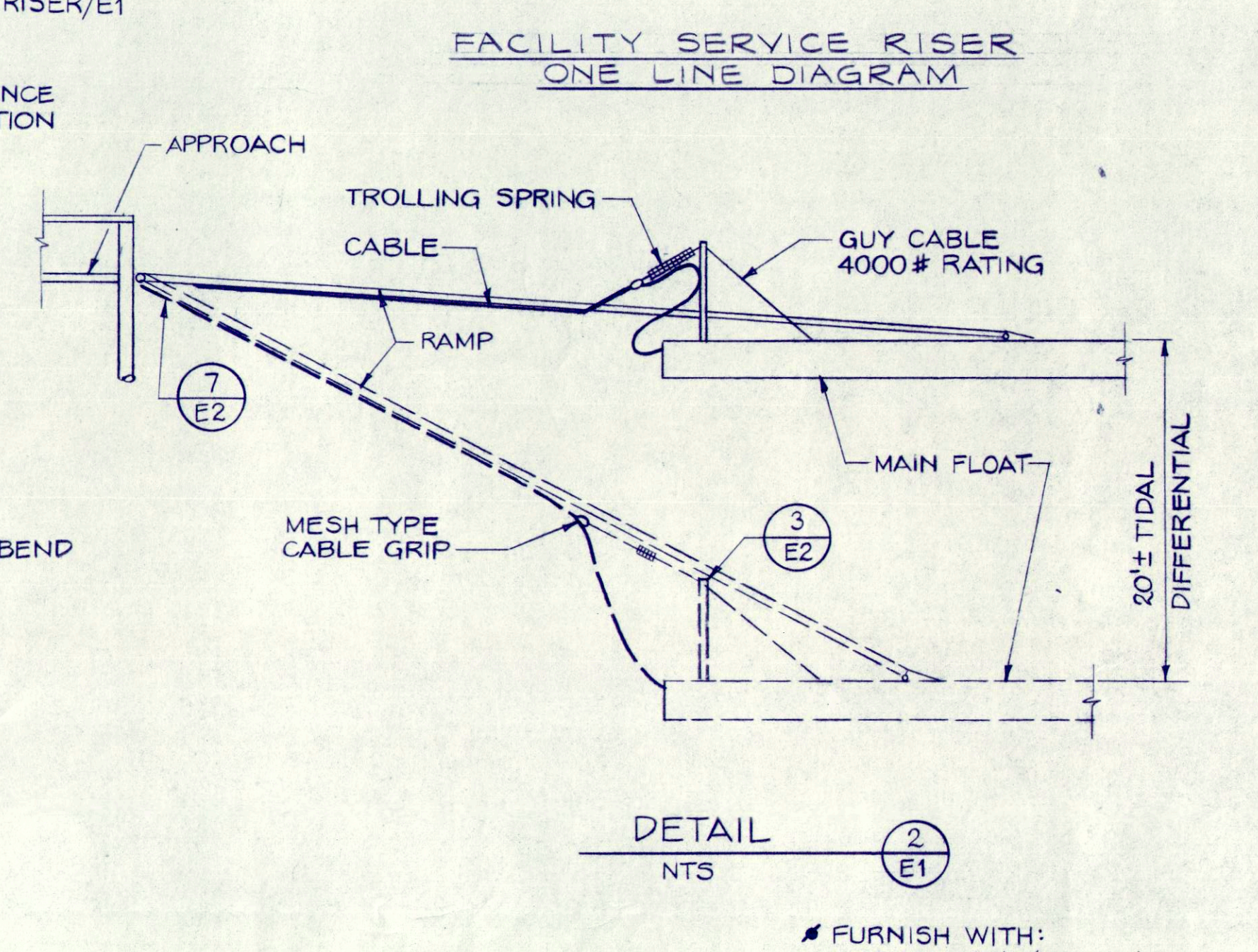
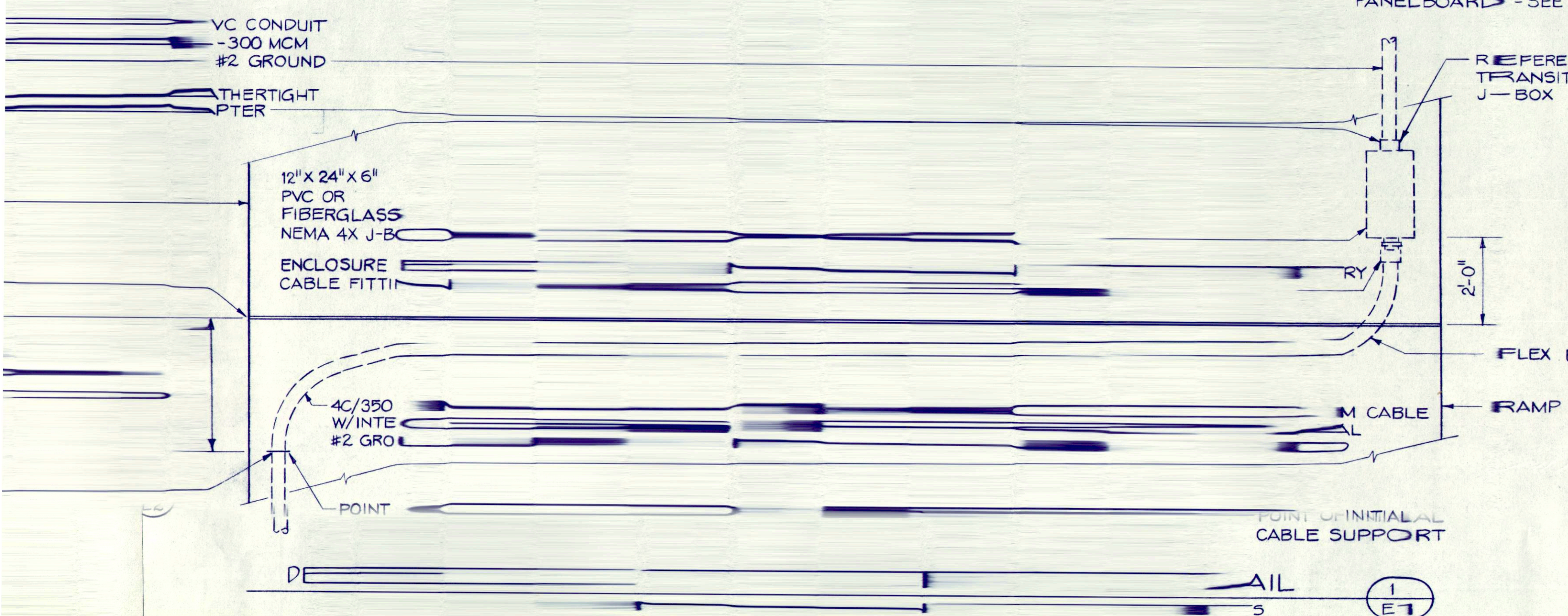
CITY OF CRAIG
CRAIG, ALASKA

SOUTH COVE MARINA
FACILITY ELECTRICAL SITE PLAN & SECTIONS





- NOTES:
1. THE LOCATION OF EXISTING ALIGNMENT PILING HAS NOT BEEN DEFINED. THE CONTRACTOR SHALL MAKE THE NECESSARY FIELD ADJUSTMENT IN LOCATION OF NEW DEVICES (STANDARDS, SWITCHES, ETC.) TO AVOID CONFLICT WITH EXISTING PILING.
 2. THE SALT WATER GROUND ELECTRODE CONDUCTOR SHALL BE HIGH FLEX, 259 STRAND NO. 2 AWG TYPE W OR EQUIVALENT. THE ELECTRODE CONDUCTOR SHALL INTERCONNECT THE SW2 GROUNDED BUS AND THE SALT WATER GROUND ROD. THE CONDUCTOR SHALL BE SECURED TO THE TIMBER FLOAT BY MEANS OF APPROPRIATE HOT-DIP GALVANIZED CABLE CLAMPS, AND BE DRAPED AT THE WATERWAY BOTTOM WITH SUFFICIENT LENGTH TO ACCOMMODATE MAXIMUM TIDAL DEVIATION.
 3. ALL SUPPORT FRAMING CHANNEL, ASSOCIATED FITTINGS AND ATTACHMENT HARDWARE SHALL BE HOT-DIP GALVANIZED AND SHALL BE FINISHED TO MATCH THE SELECTED COLOR OF THE NEW SERVICE STANDARDS.
 4. NEW LIGHT STANDARDS SHALL BE FABRICATED TO MATCH THE FACILITY EXISTING STANDARDS. FINISH TREATMENT OF NEW STANDARDS SHALL BE IN ACCORDANCE WITH THE SPECIFICATIONS FOR FINISH TREATMENT OF EXISTING STANDARDS.



ED SCOPE OF WORK

REVISION

OWNER REVIEW

SCALE AS SHOWN

Job No. 4910-B101-03

Designed: DH

Drawn by: RS/GM

Checked by: DH

Proj. Engr.: GR

Approved by: WLB

Date: 4-30-84

URS ENGINEERS

Engineering and Environmental Consultants
 Seattle, Washington

CITY OF CRAIG
 CRAIG, ALASKA

SOUTH COVE MARINA
 FACILITY SERVICE RISER & DETAILS

STATE OF ALASKA
 4910
 Duane Helmer
 No. EE-4991
 LICENSED PROFESSIONAL ENGINEER

STATE OF ALASKA
 4910
 Walter L. Berschauer
 No. EE-374-E
 LICENSED PROFESSIONAL ENGINEER

SHEET E2

2