

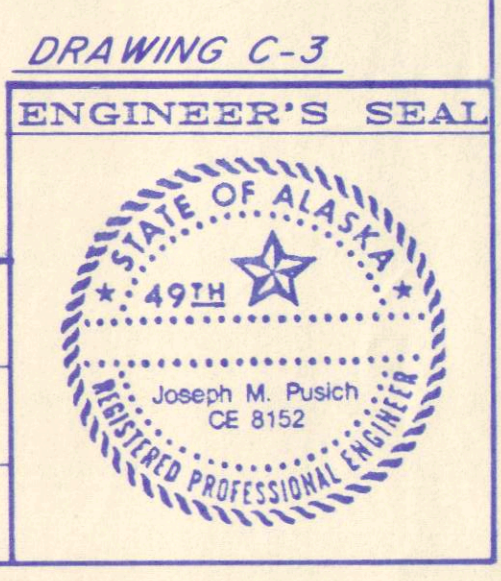
- FOUNDATION NOTES:**
- WHERE VERTICAL LINES ARE INDICATED FOR EXCAVATION AND/OR FILL LIMITS WITHIN THE TYPICAL SECTIONS, THESE ARE TO BE INTERPRETED AS THEORETICAL POSITIONS OF THE CUT AND FILL ONLY. THE CONTRACTOR SHALL EXCAVATE MATERIALS AT A SAFE SLOPE SUITABLE FOR THE MATERIALS BEING EXCAVATED. FILL MATERIAL SHALL BE PLACED AT LEAST TO THE MINIMUM DIMENSIONS INDICATED.
 - REFER TO THE RELEVANT SECTIONS OF THE SPECIFICATIONS FOR INFORMATION REGARDING EXCAVATION, BACKFILL MATERIALS, METHODS AND TESTING REQUIREMENTS.
 - FINISH GRADE ELEVATIONS FOR FILL OUTSIDE THE BUILDING ARE AS INDICATED ON THE SITE PLAN (SHEET C-1).
 - SELECT BORROW SHALL BE 12" MINUS NFS MATERIAL COMPACTED TO 95% COMPACTION WITHIN THE BUILDING FOOTPRINT AND COMPACTED TO 90% COMPACTION OUTSIDE THE BUILDING FOOTPRINT.
 - BASE COURSE GRADING D-1 SHALL MEET THE GRADATION REQUIREMENTS SPECIFIED IN THE PROJECT TECHNICAL SPECIFICATIONS. COMPACTION SHALL BE BASED ON THE MAXIMUM DRY DENSITY AS OBTAINED FROM USING AASHTO T180D TEST METHODS.
 - CONSTRUCTION SLABS, FOUNDATIONS, AND WALLS SHALL BE PER STRUCTURAL DRAWINGS. BEFORE BACKFILLING OR PLACING BUILDING LOADS, ALLOW 14 DAYS OF CURING TIME FOR CONCRETE WALLS AND FOUNDATIONS, OR UNTIL THE CONCRETE OBTAINS 75% OF THE DESIGN STRENGTH.
 - PLACE 3" MINUS SHOTROCK (DRAINAGE FILL ROCK) ON BOTH SIDES OF THE FOUNDATION WALLS SHOWN ON THE TYPICAL SECTION. ALTERNATIVE LIFTS OF 3" MINUS ON EITHER SIDE OF THE WALL TO PREVENT UNEVEN LATERAL LOADING. COMPACT TO 95% USING AASHTO T180D TEST METHODS.
 - NO SUBSURFACE INVESTIGATION WAS PERFORMED ON THIS SITE PER DOT/PF DIRECTION. THE EXISTING SITE HAS BEEN PREVIOUSLY FILLED BY OTHERS WITH SHOT ROCK. THE CONTRACTOR IS ENCOURAGED TO INVESTIGATE THE EXISTING SITE CONDITIONS.

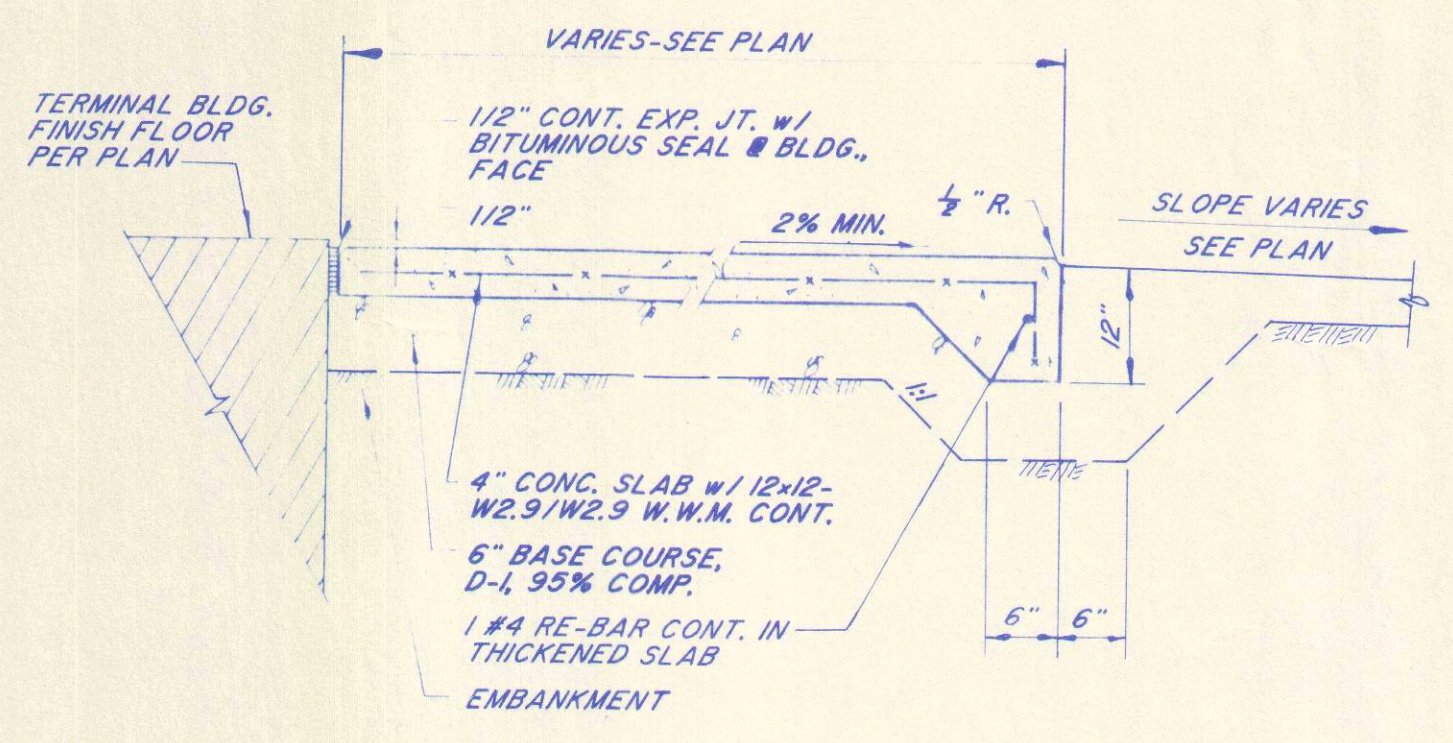
RECORD OF REVISIONS		
NO.	DATE	DESCRIPTION OF CHANGE

STATE OF ALASKA
DEPARTMENT OF TRANSPORTATION
AND PUBLIC FACILITIES
SOUTHEAST REGION DESIGN & CONSTRUCTION

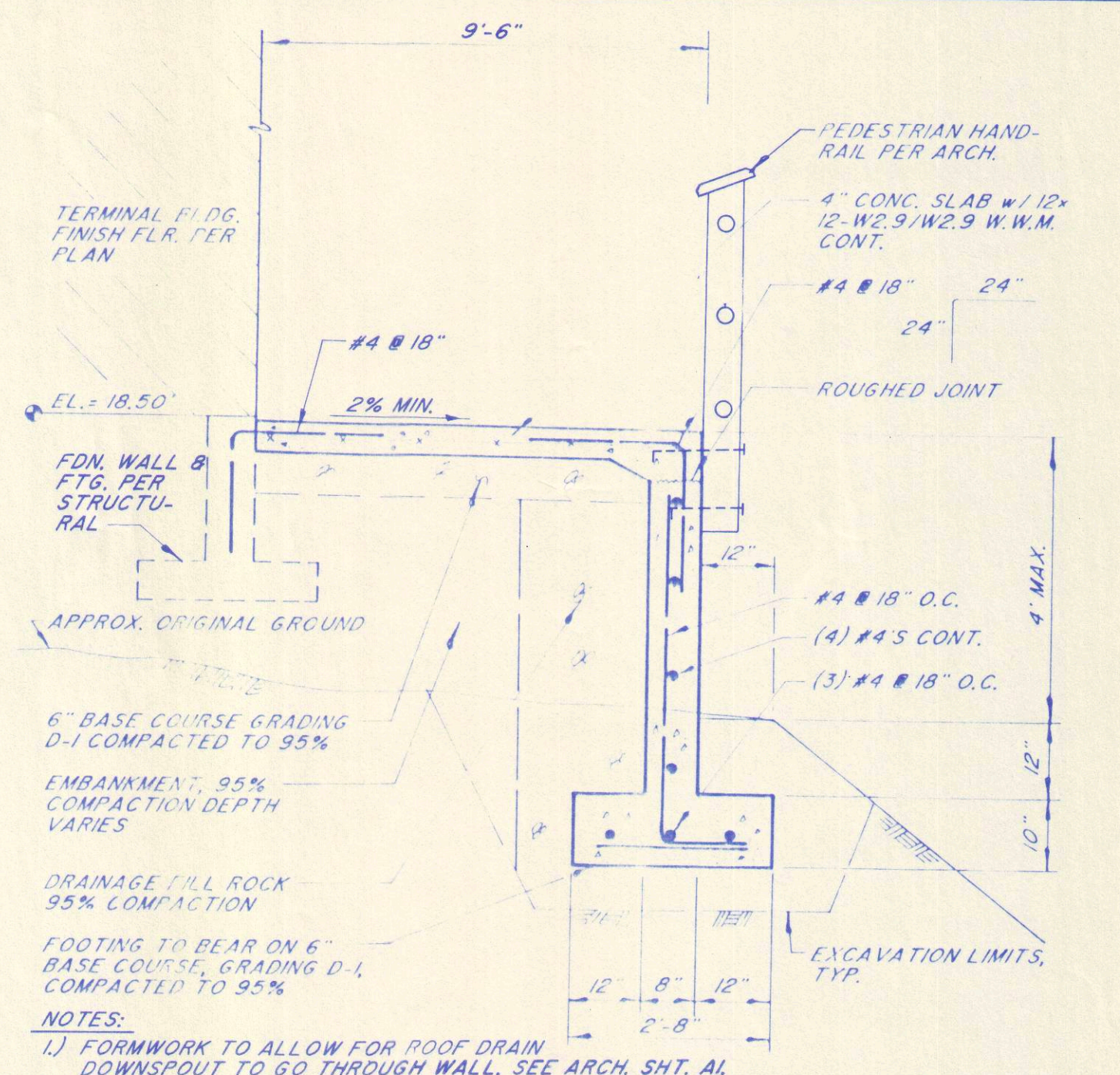
CRAIG
CRAIG SEAPLANE BASE EXPANSION
AIP # 3-02-0071-01
SITE CROSS SECTIONS &
CONSTRUCTION DETAILS

DESIGNED BY: J.M.P.	PROJECT NO. 69956
DRAWN BY: D.S.	DATE: AUGUST, 1994
CHECKED BY: M.A.M.	SHEET 43 OF 60

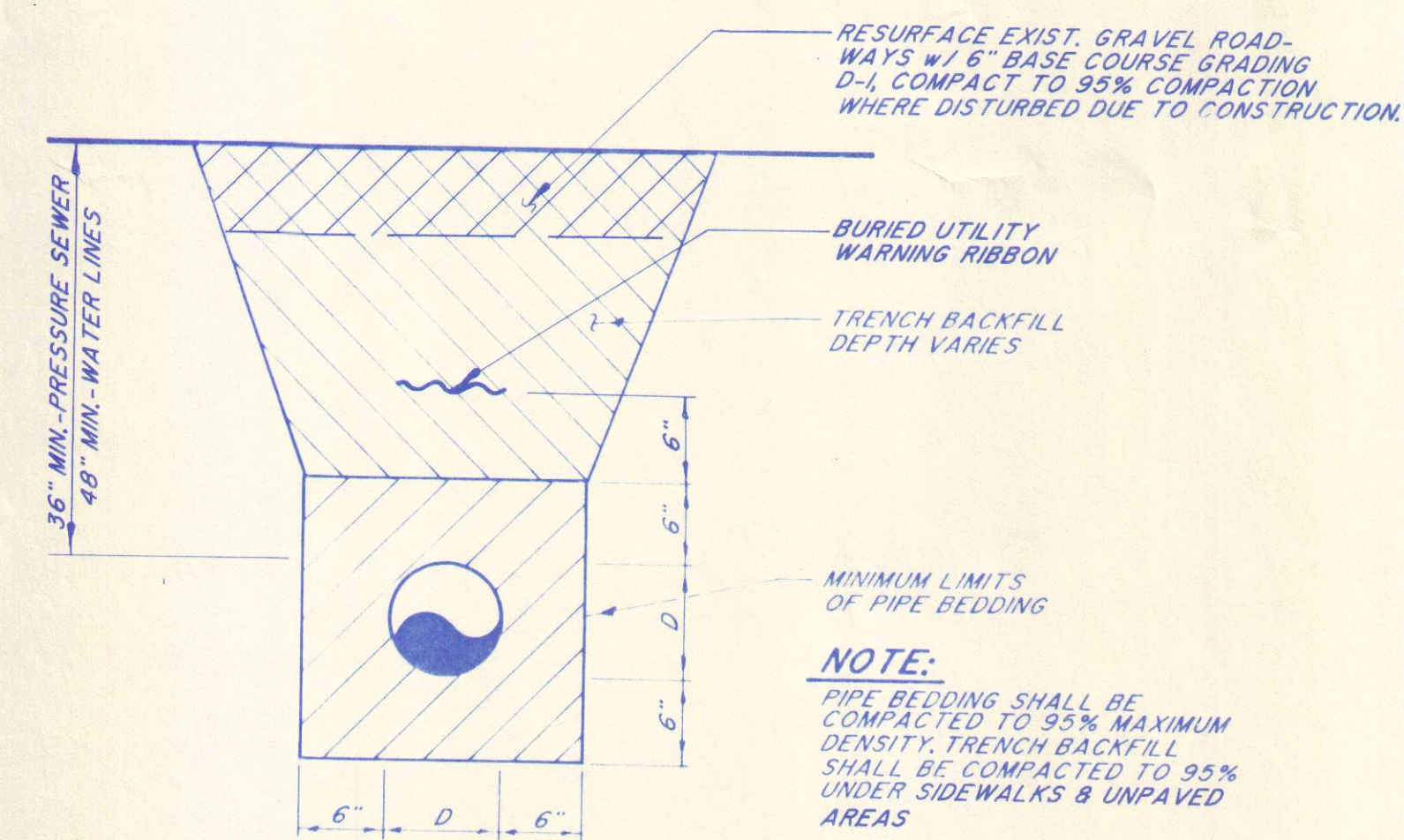




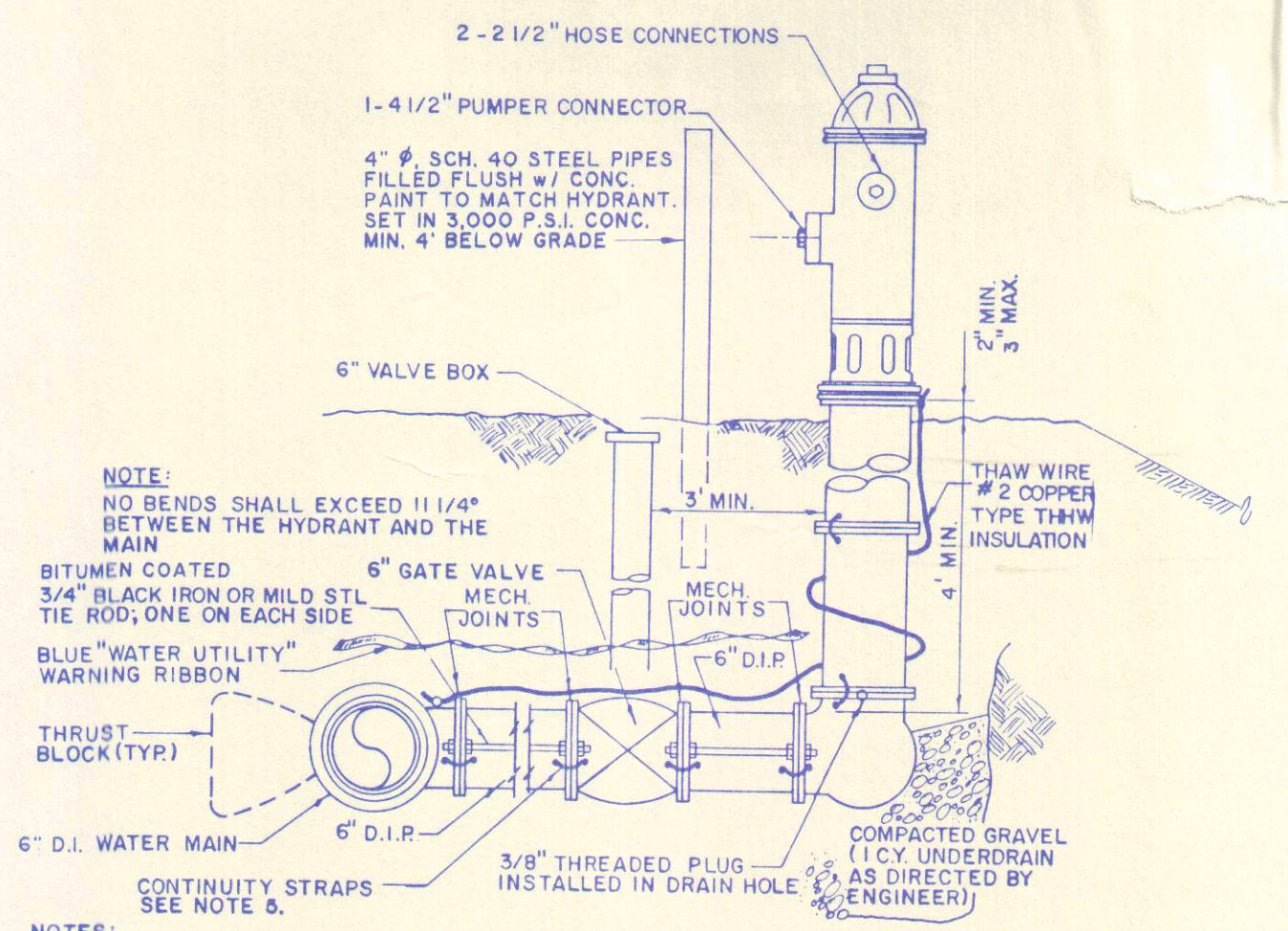
1 CONCRETE SIDEWALK
 N.T.S.



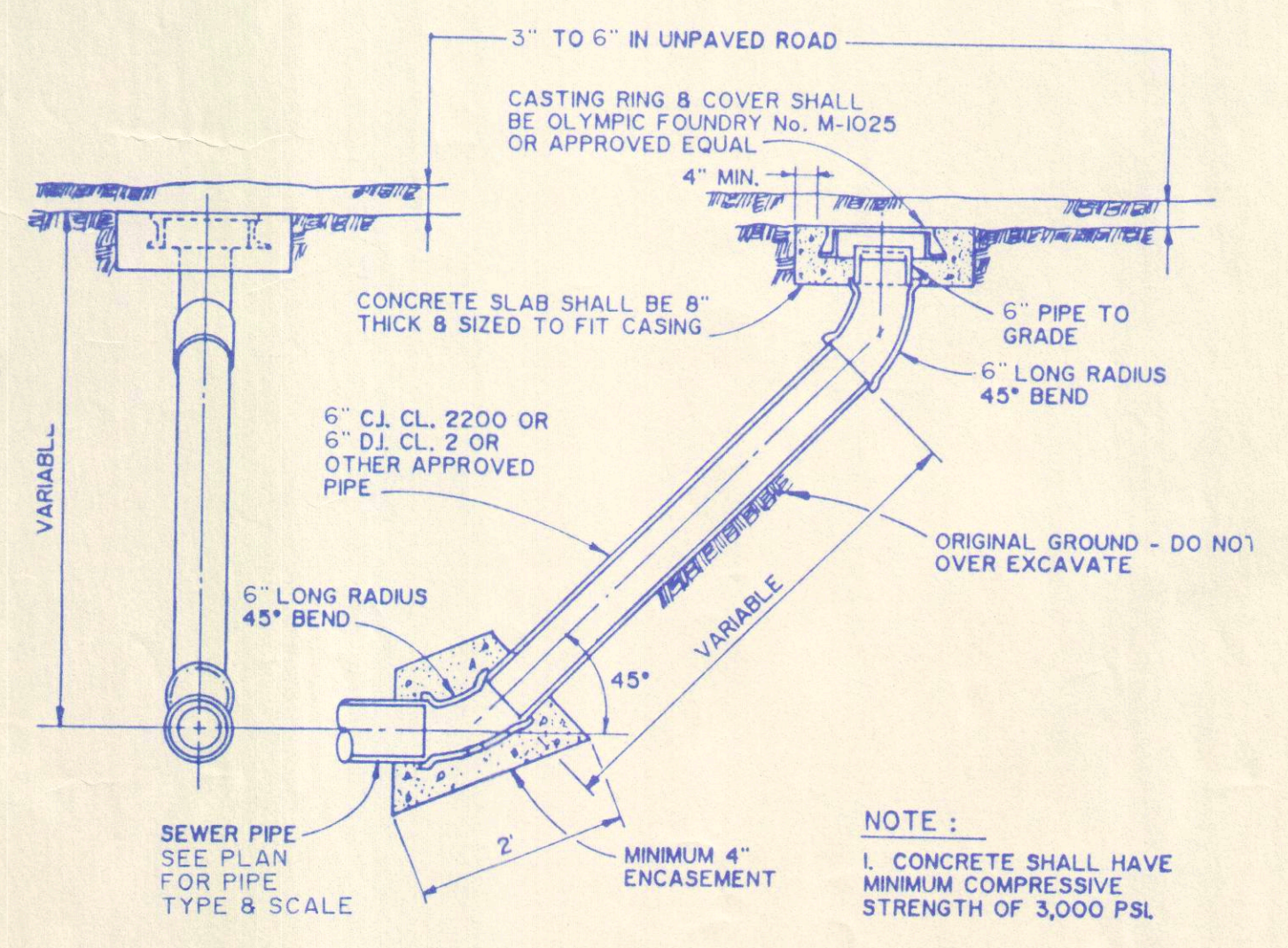
2 TYPICAL TURNED DOWN SIDEWALK
 N.T.S.



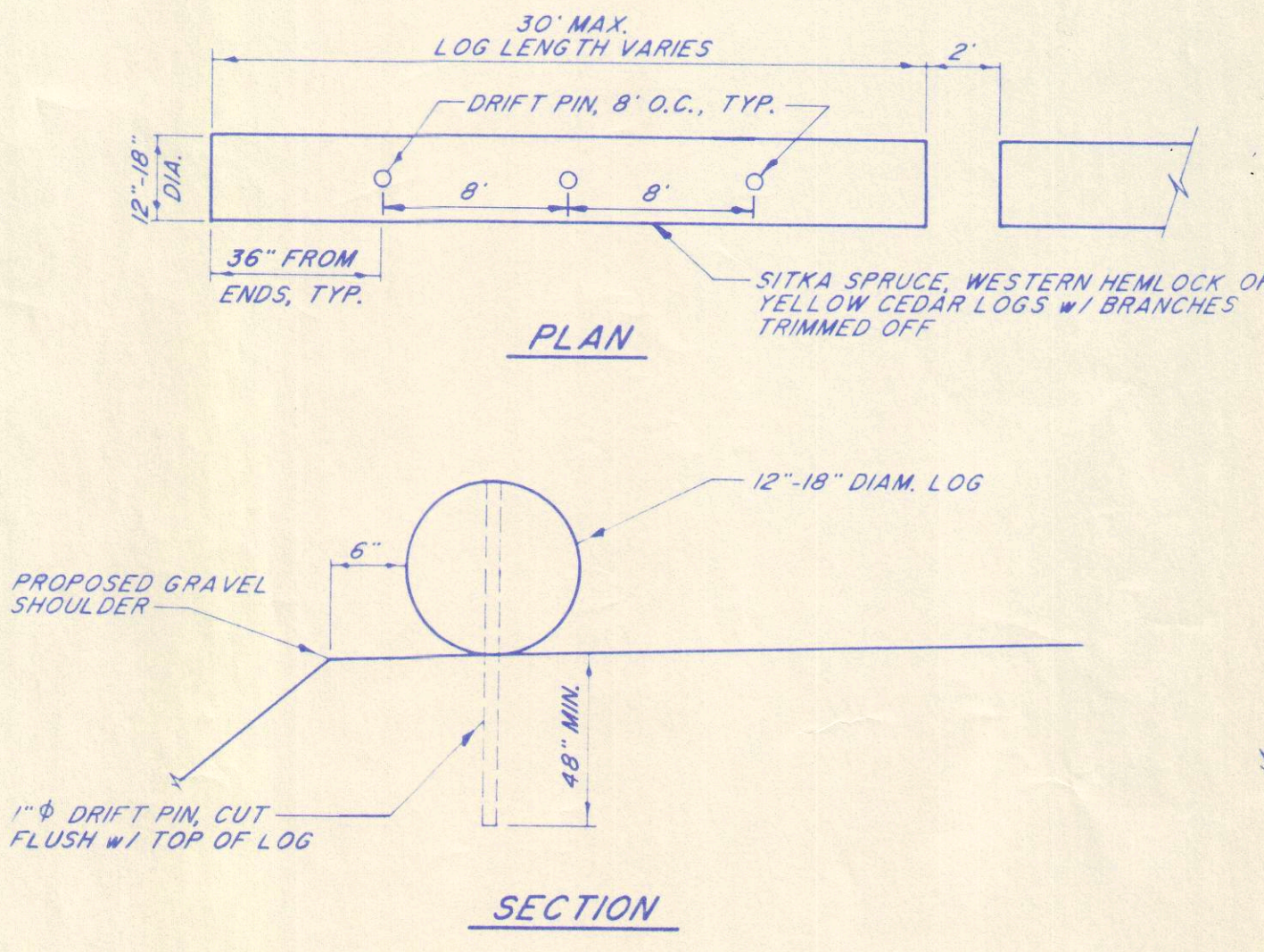
3 PIPE BEDDING & TRENCH BACKFILL
 N.T.S.



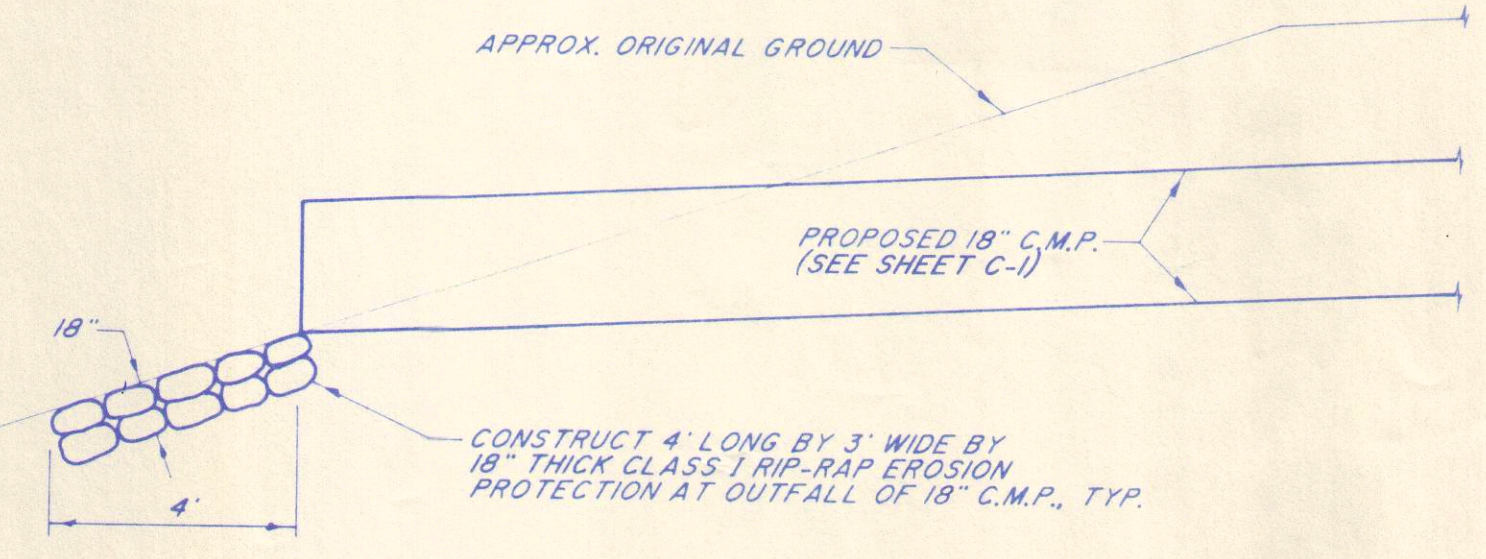
4 FIRE HYDRANT
 N.T.S.



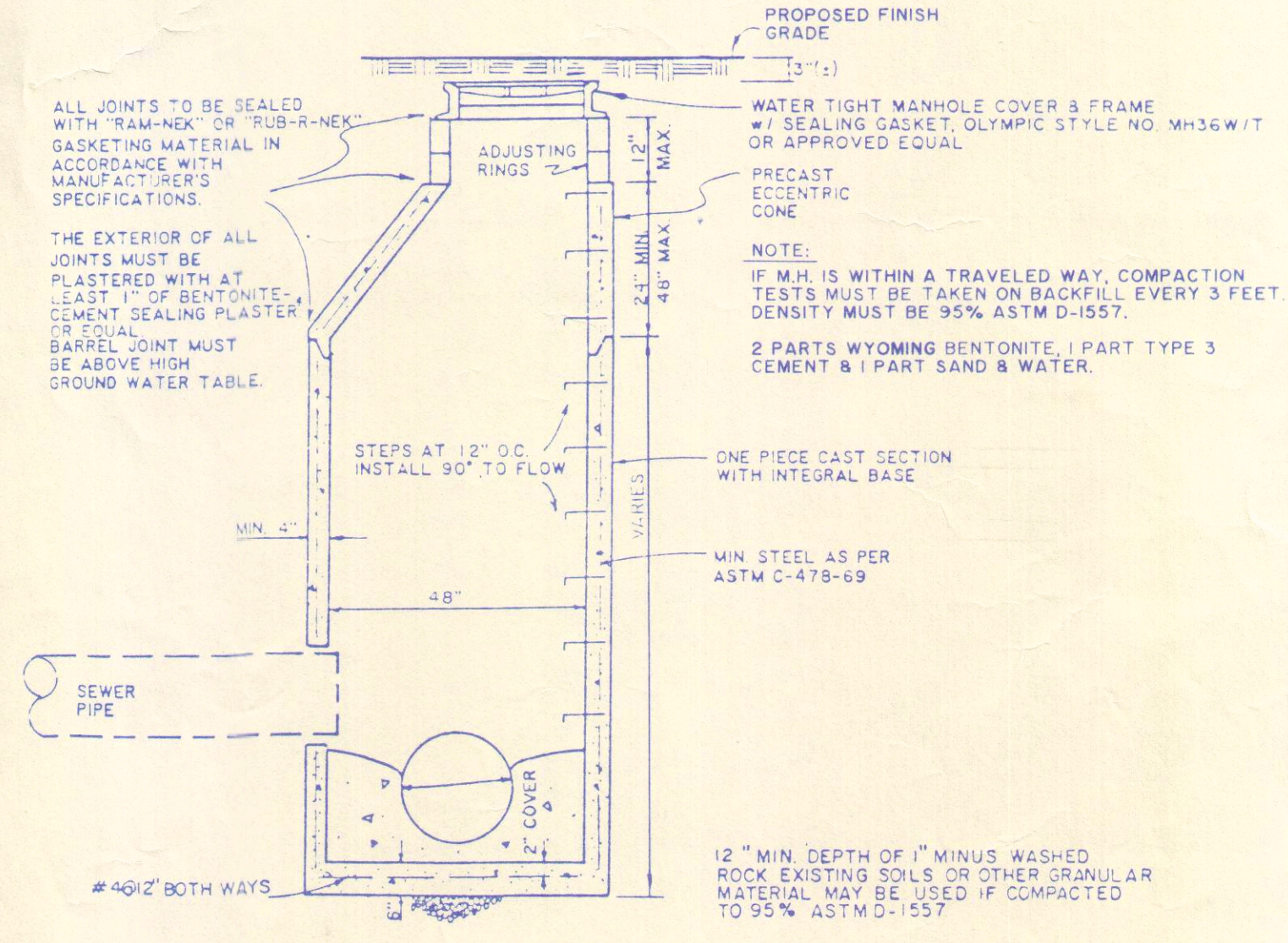
5 SANITARY SEWER CLEANOUT
 N.T.S.



6 LOG PARKING BARRIER
 N.T.S.



7 C.M.P. OUTFALL DETAIL
 N.T.S.



8 SANITARY SEWER MANHOLE
 N.T.S.

RECORD OF REVISIONS

PATH:	BY:	DATE:	DESCRIPTION OF CHANGE:

STATE OF ALASKA
 DEPARTMENT OF TRANSPORTATION
 AND PUBLIC FACILITIES
 SOUTHEAST REGION DESIGN & CONSTRUCTION

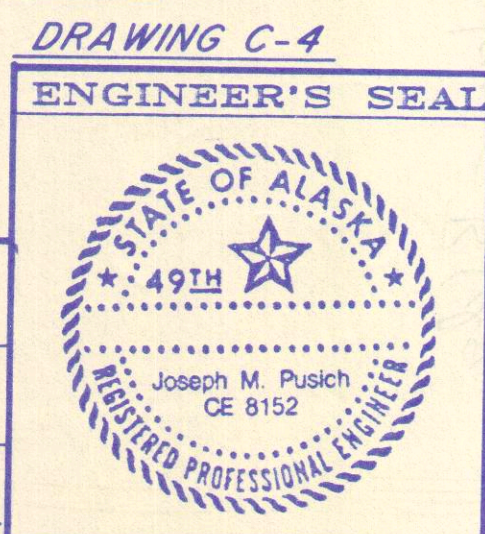
CRAIG

CRAIG SEAPLANE BASE EXPANSION
 AIP # 3-02-0071-01
 CONSTRUCTION DETAILS

ALASKA

NOTE: DO NOT SCALE FROM THESE PLANS-USE DIMENSIONS

DESIGNED BY: J.M.P.	PROJECT NO. 69956
DRAWN BY: F.M.	DATE: AUGUST, 1994
CHECKED BY: M.A.M.	SHEET 44 OF 60



R & M PROJECT # 931300