

ORDINANCE NO. 319

CITY OF CRAIG

AMENDING THE TRANSPORTATION PLAN OF THE CRAIG COMPREHENSIVE PLAN IN THE PORTION OF EAST CRAIG SOUTH OF THE CRAIG-KLAWOCK HIGHWAY AND EAST OF PORT BAGIAL BOULEVARD

BE IT ORDAINED BY THE COUNCIL OF THE CITY OF CRAIG, ALASKA:

Section 1. Classification. This ordinance is of a general and permanent nature and the code sections adopted hereby shall become a part of the code of the City of Craig, Alaska.

Section 2. Severability. If any provision of this ordinance or its application to any person or circumstance is held invalid, the remainder of this ordinance and the application to other persons or circumstances shall not be affected thereby.

Section 3. Effective Date. This ordinance shall be effective immediately upon adoption.

Section 4. Action. This ordinance amends the transportation plan of the Craig Comprehensive Plan in the portion of East Craig south of the Craig-Klawock Highway and East of Port Bagial Boulevard to that shown on Attachment "A", which is made part of this ordinance, and described below:

1. Proposed Local Roads

- A. On the boundary between Lot 11, USS 2611 and HS 602, USS 2611, from Hamilton Drive west to Lot 5, HS 602. (Access for Lots 5, 6 and 7, HS 602, and Lots 11C-1, 11C-2, and 11C-3, USS 2611)
- B. On the south side of Lots 12 and 13, USS 2611, from Hamilton Drive to the eastern part of Lot 17, USS 2611. (Access for Lots 12, 17 and 18, USS 2611)
- C. On the boundary between Lots 19 and 20, USS 2611, from Hamilton Drive to Port Bagial Boulevard (Access for Lots 17, 19 and 20)
- D. Approximately following the existing driveway to JS Warehouse, from the proposed north/south collector to Port Bagial Boulevard. (Access for commercial and industrial development)

2. Existing Collectors

- A. Port Bagial Boulevard from the Craig-Klawock Highway to Hamilton Drive (Collects traffic from Hamilton Drive, Water Tower Road and Sunnyside Drive)
- B. Hamilton Drive from the Craig-Klawock Highway to Port Bagial Boulevard (Collects traffic from existing and proposed local roads)

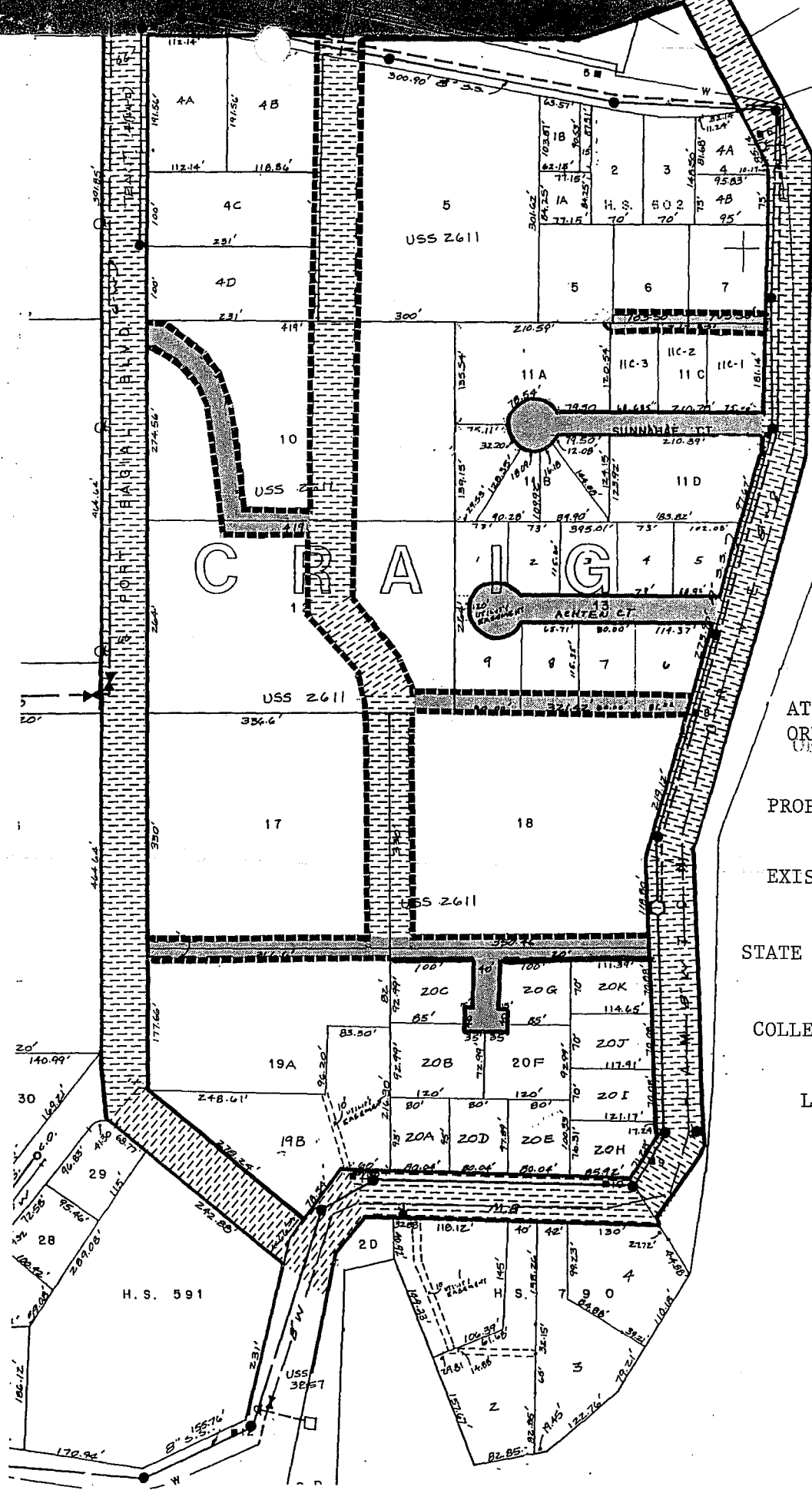
- 3. Craig-Klawock Highway
The Craig-Klawock Highway functions primarily as an arterial through this part of Craig.
- 4. Lower the elevation of Port Bagial Blvd.
Lower the elevation of Port Bagial Blvd. between Water Tower Road and the Craig-Klawock Highway (approximately) to improve access to the commercial/industrial areas and separate commercial/industrial traffic separate from residential traffic.
- 5. Proposed Collector
The proposed collector would connect the Craig-Klawock Highway on the north with the proposed local road on the boundary between Lots 17/19 and 18/20, USS 2611.
(Collect traffic from the light industrial and commercial areas, and proposed local streets)
- 6. Existing Local Streets
 - A. Sunnahae Court
(Serves Lot 11, USS 2611)
 - B. Achten Court
(Serves Lot 13, USS 2611)
 - C. Platted streets in Lot 20, USS 2611
(Serves Lots 17, 18, 19, 20, USS 2611)







PASSED AND APPROVED ON 8-1, 1991

Dennis Watson
MAYOR DENNIS WATSON

ATTEST Helen Gray
HELEN GRAY, CITY CLERK



ATTACHMENT "A"
ORDINANCE NO. 319
UK

- PROPOSED 
- EXISTING 
- STATE HWY. 
- COLLECTOR 
- LOCAL 