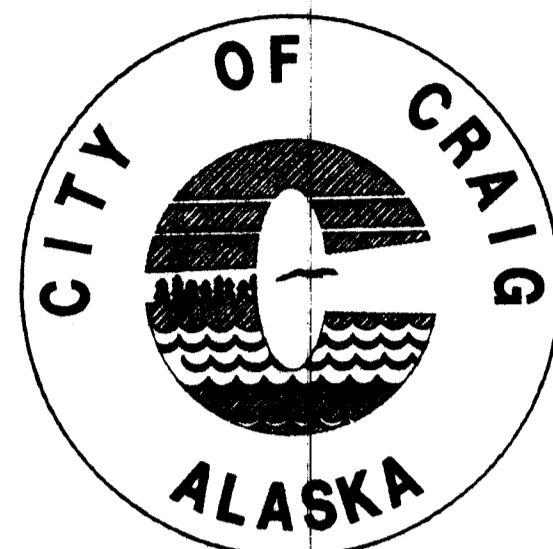


CITY OF CRAIG

SALMONBERRY SUBDIVISION IMPROVEMENTS



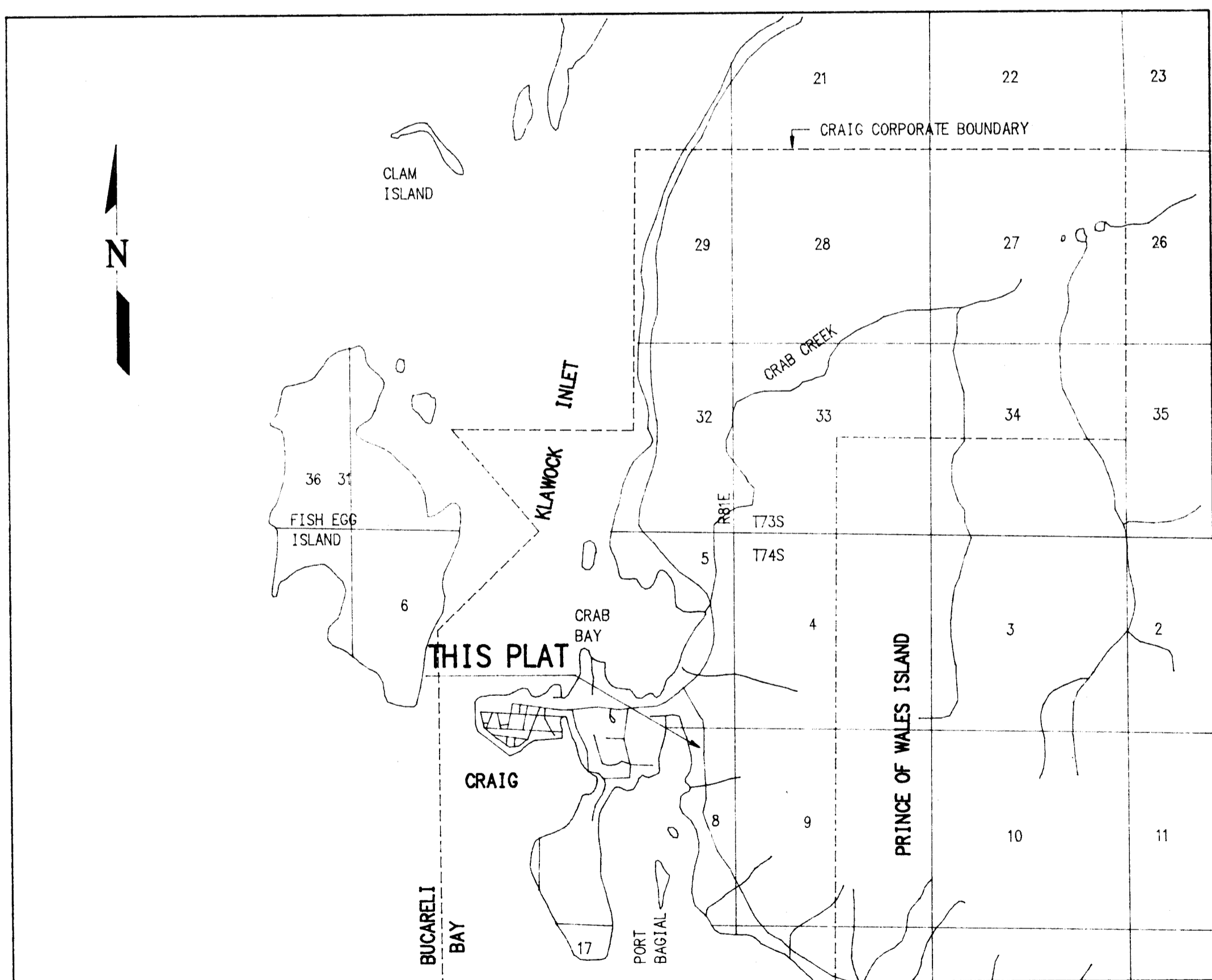
CITY STAFF
 MAYOR: DENNIS WATSON
 CITY ADMINISTRATOR: TOM BRIGGS
 CITY PLANNER: JON BOLLING
 PUBLIC WORKS DIRECTOR: MIKE McKIMENS

PREPARED BY
GREG SCHEFF AND ASSOCIATES
LAND SURVEYORS AND ENGINEERS

BOX 1849 SITKA, ALASKA 99835
 BOX 1331 WRANGELL, ALASKA 99929

CITY COUNCIL
 FRED HAMILTON, SR.
 CLAIRE CROOKES
 OTIS GIBBONS
 RANDY OTOS
 WANDA RICE
 MILLIE STEVENS

PLANNING COMMISSION
 CHAIRMAN: GREG MICKELSON
 PETE RICE
 CARL (DOC) WATERMAN
 BILL HOLMAN
 KAREN SAFFORD



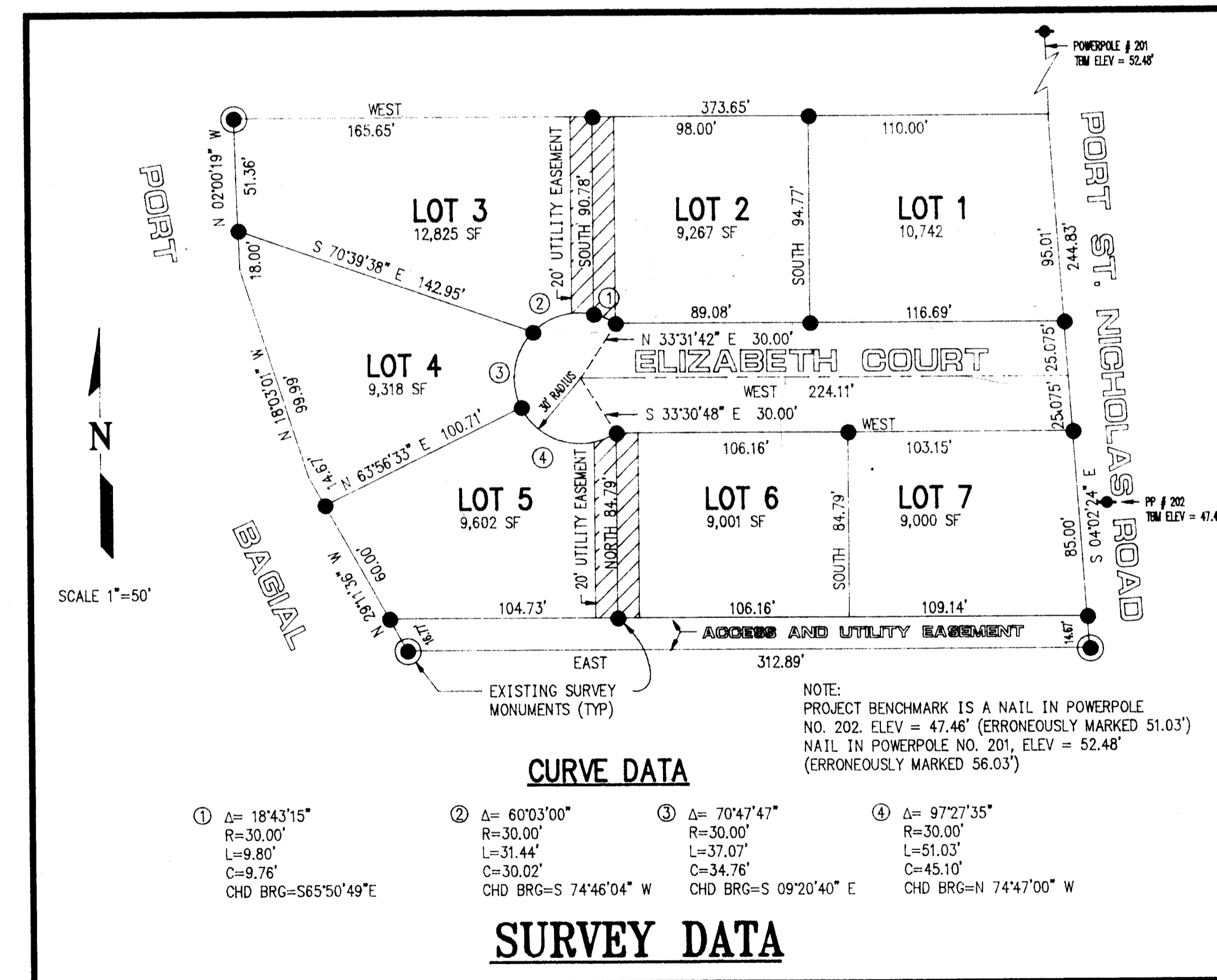
VICINITY MAP

DRAWING INDEX

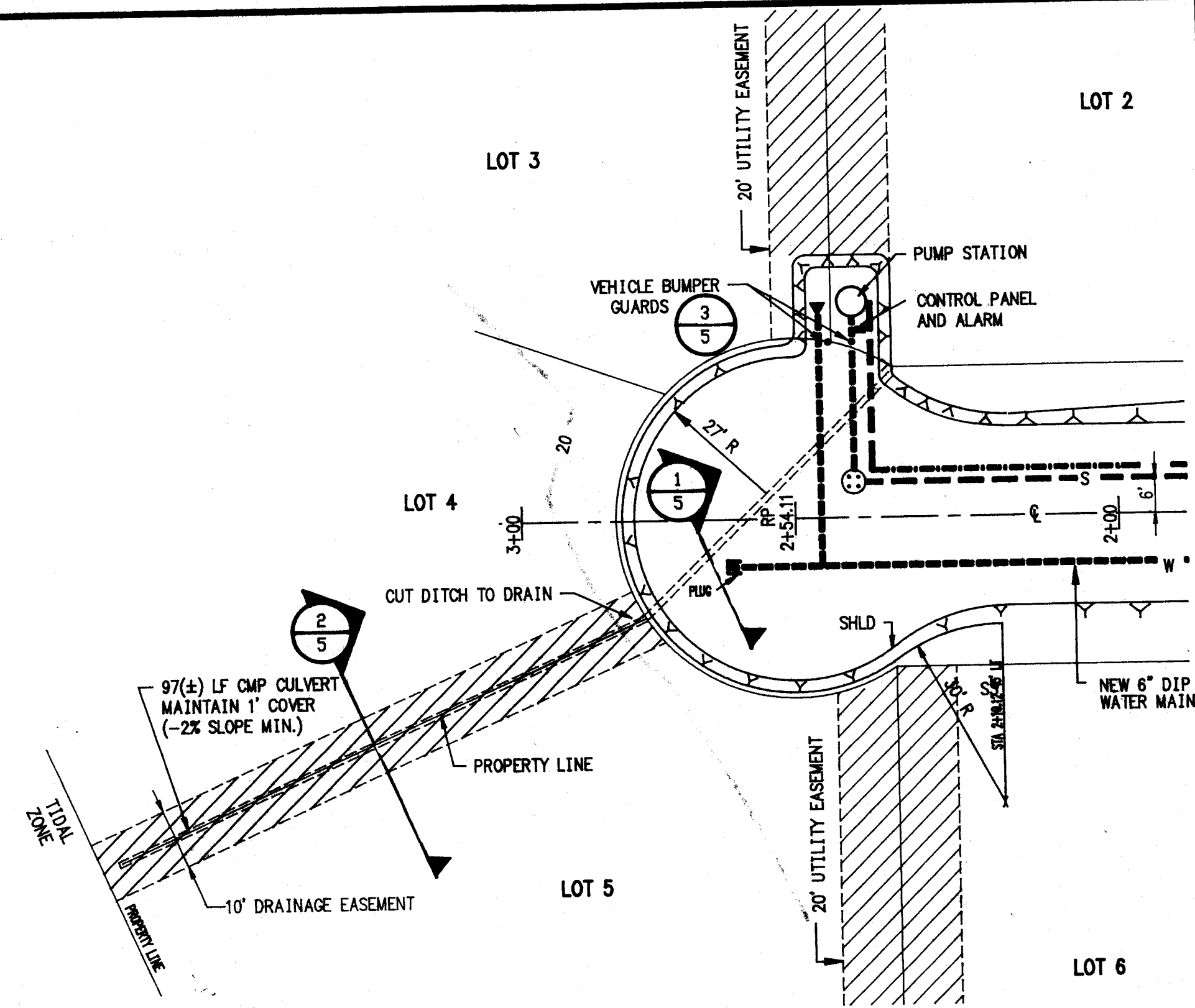
- | | |
|-----|-----------------------------|
| No. | SHEET |
| 1 | COVER SHEET |
| 2 | PLAN VIEW/ PLAN AND PROFILE |
| 3 | MISC. DETAILS |
| 4 | MISC. DETAILS |
| 5 | PUMP STATION DETAILS |

LEGEND

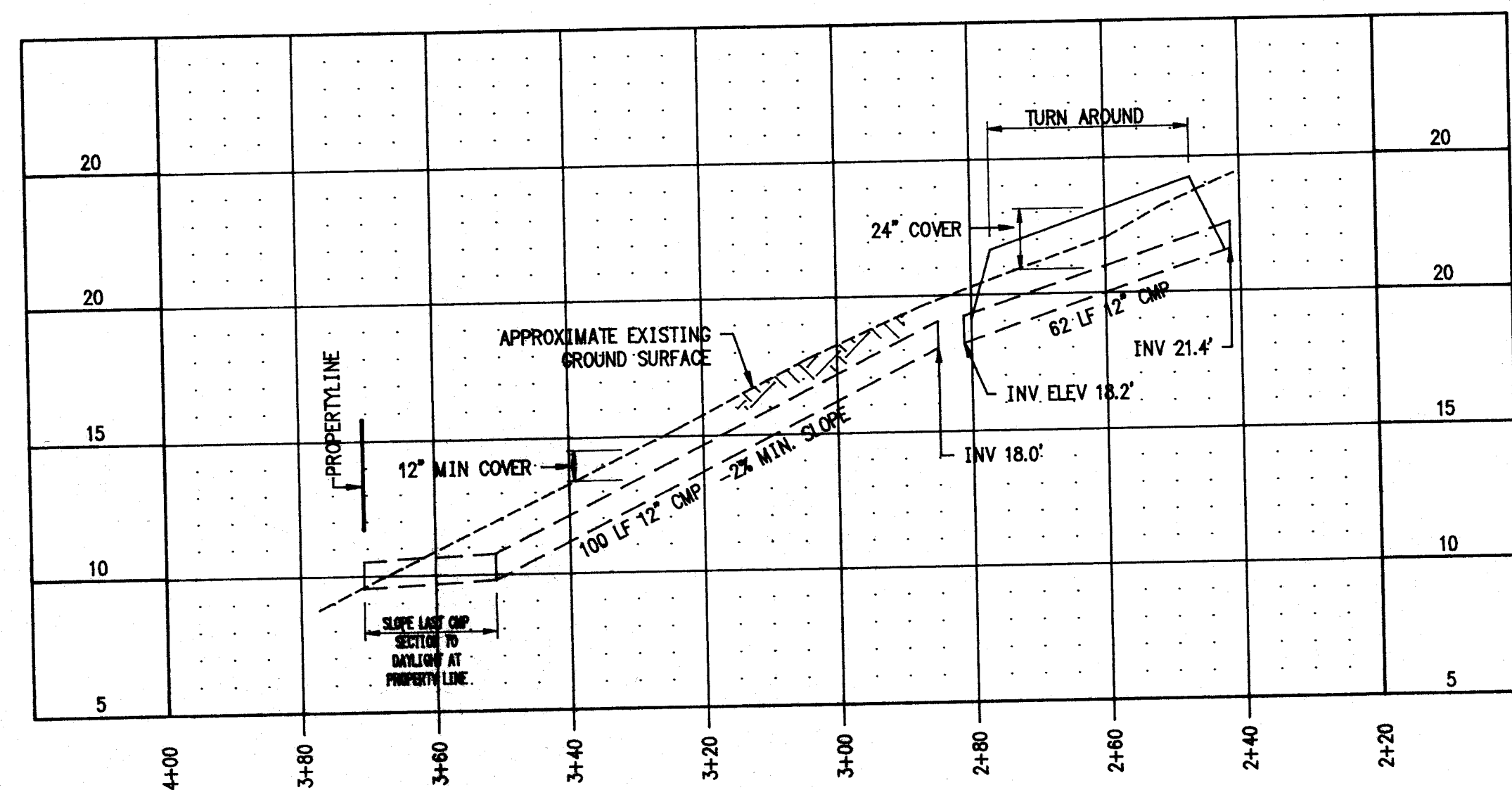
- | NEW | EXISTING |
|---|--------------------------------|
| ●-pp POWER POLE | ←-pp POWER POLE |
| ⊙-MH MANHOLE | |
| ⊙-FH FIRE HYDRANT | |
| ●-CO CLEANOUT | |
| --- W- WATER LINE | --- W- EXISTING 12" WATER MAIN |
| --- W- WATER SERVICE CONNECTION (1" UNLESS OTHERWISE NOTED) | |
| --- S- GRAVITY SEWER LINE | |
| SS--- 4" SEWER SERVICE | |
| --- P- POWER LINE | --- P- POWER LINE |
| --- F- FORCE MAIN | |
| --- E- EDGE OF ROAD | --- E- EDGE OF ROAD |



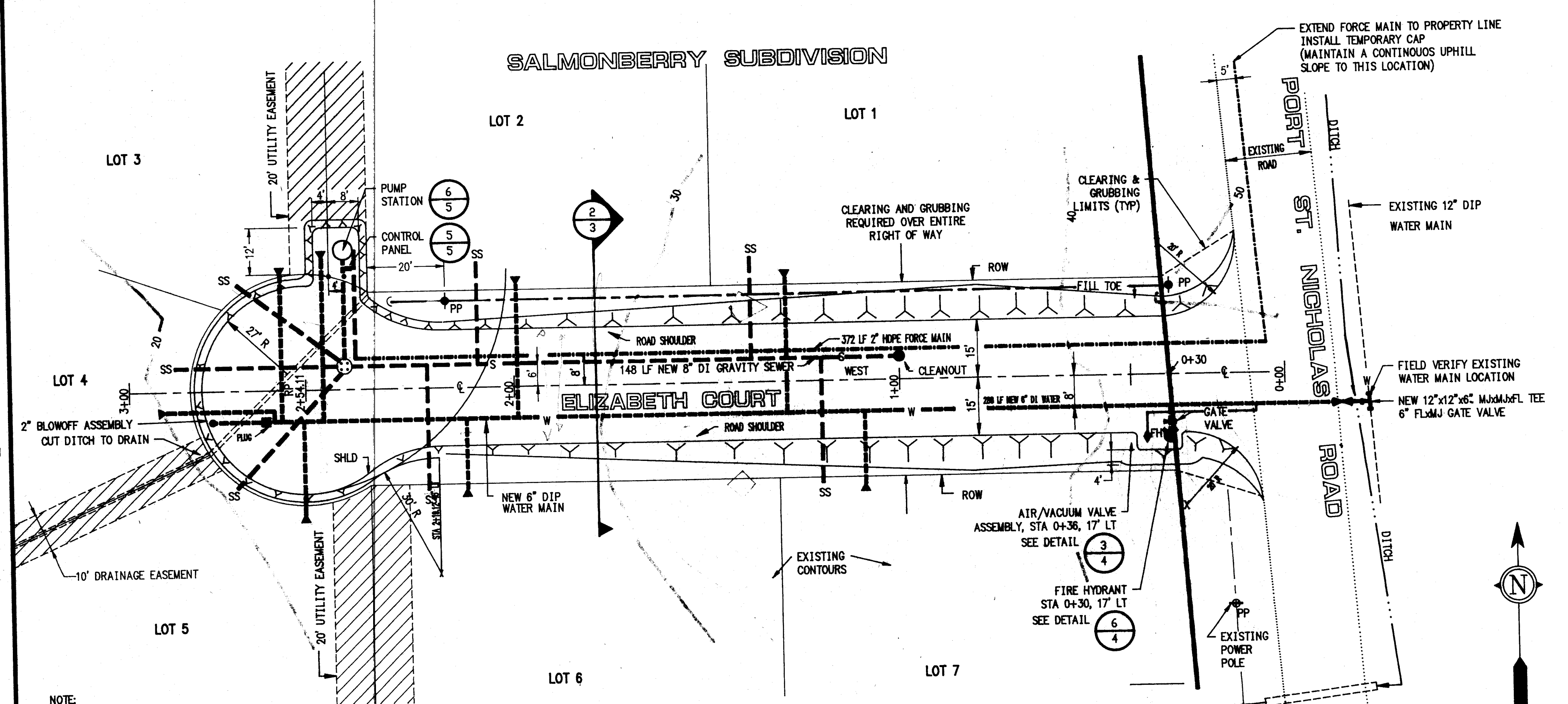
SALMONBERRY SUBDIVISION



STORM DRAINAGE PLAN
SCALE: 1"=20'

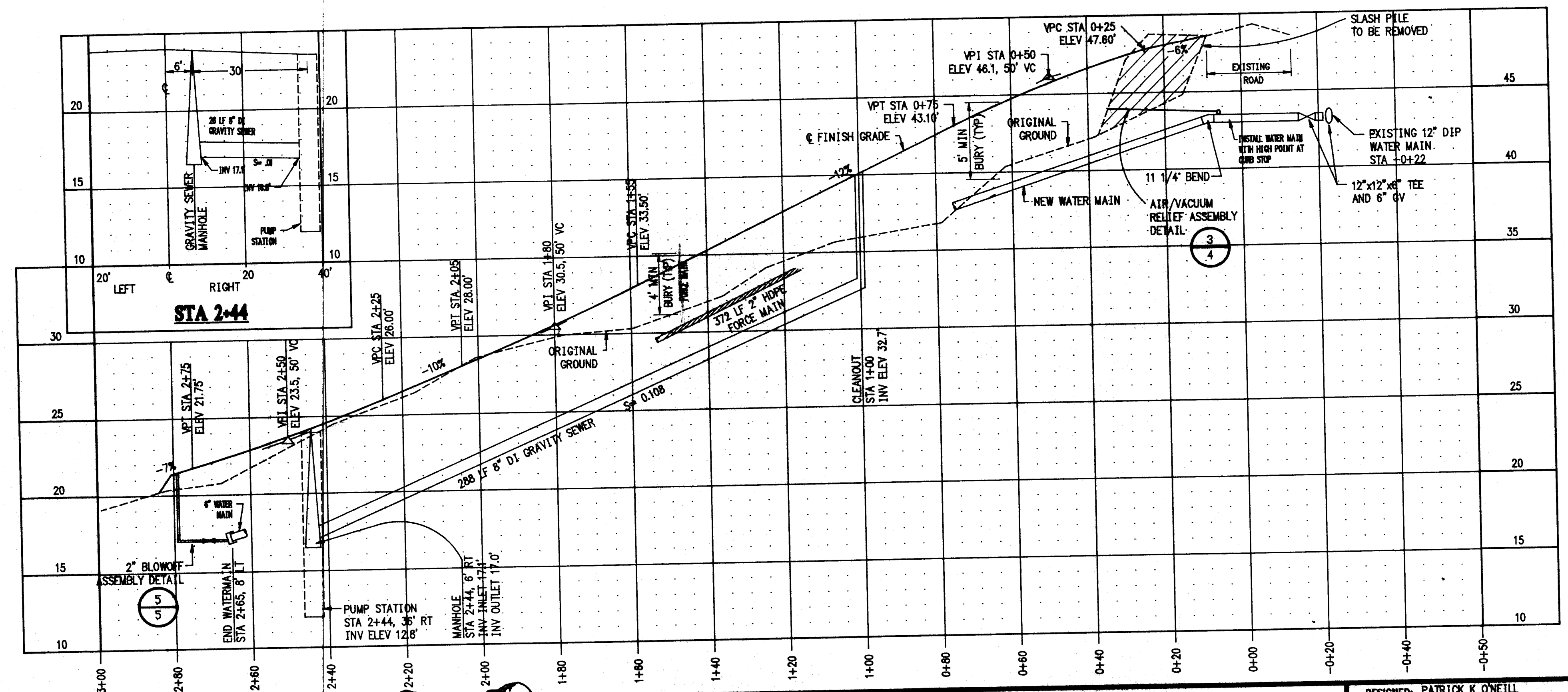


STORM DRAINAGE PROFILE
SCALE: 1"=20'



ELIZABETH COURT PLAN VIEW
SCALE: 1"=20'

NOTE:
1. THE INSTALLATION OF POWERPOLES AND POWERLINES IS NOT A PART OF THIS CONTRACT.

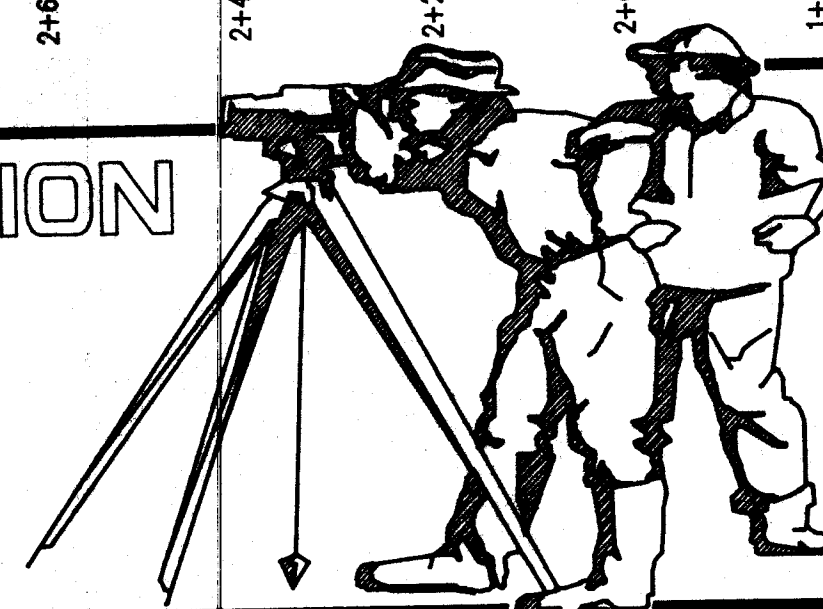


GREG SCHEFF & ASSOCIATES
LAND SURVEYORS & ENGINEERS

BOX 1849 SITKA, ALASKA 99835
(907) 747-6700
BOX 1331 WRANGELL, ALASKA 99929
(907) 874-2177

**PROJECT: SALMONBERRY SUBDIVISION
IMPROVEMENTS
PLAN AND PROFILE**

CLIENT: CITY OF CRAIG, PO BOX 23, CRAIG, ALASKA 99921

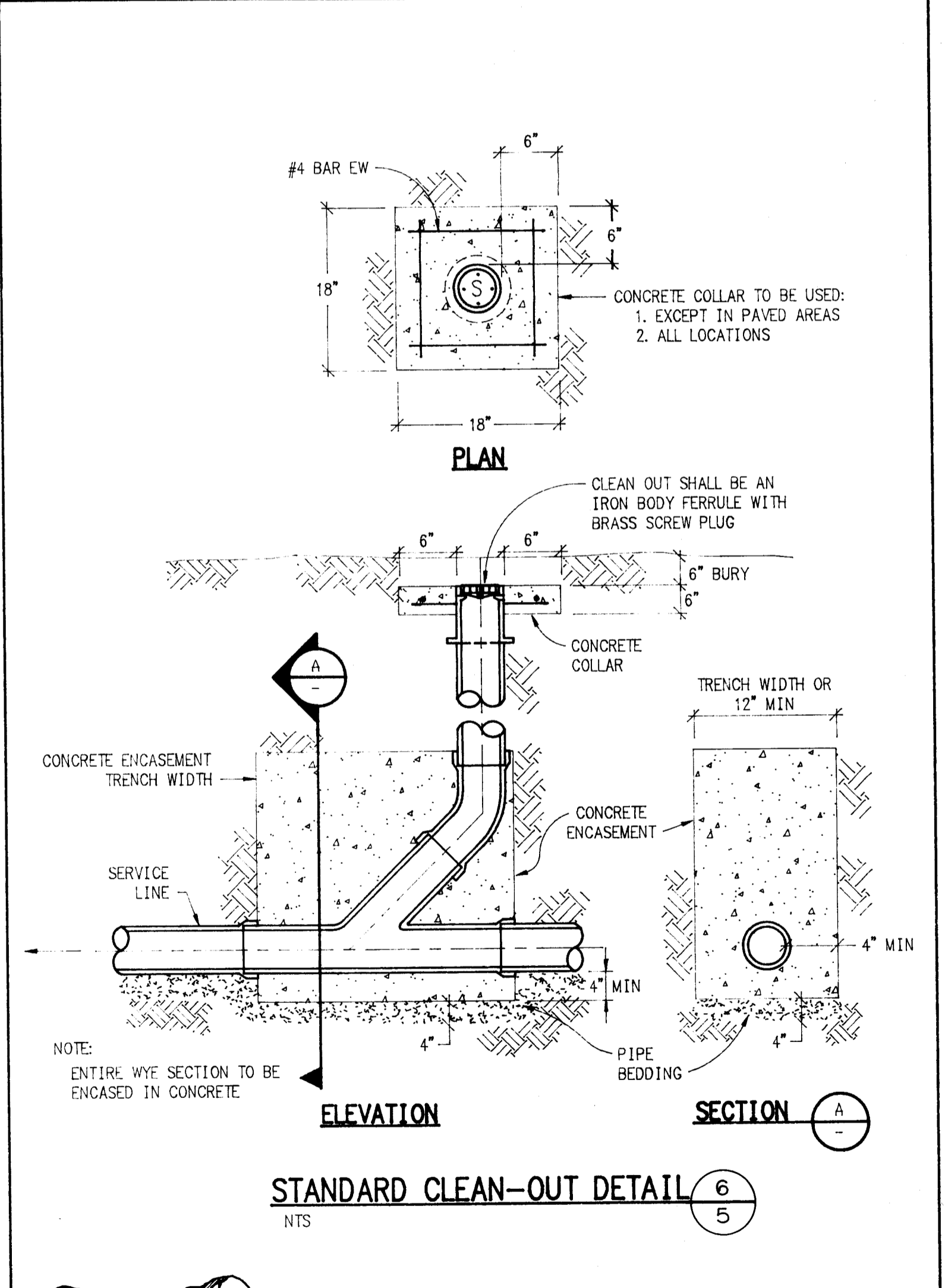
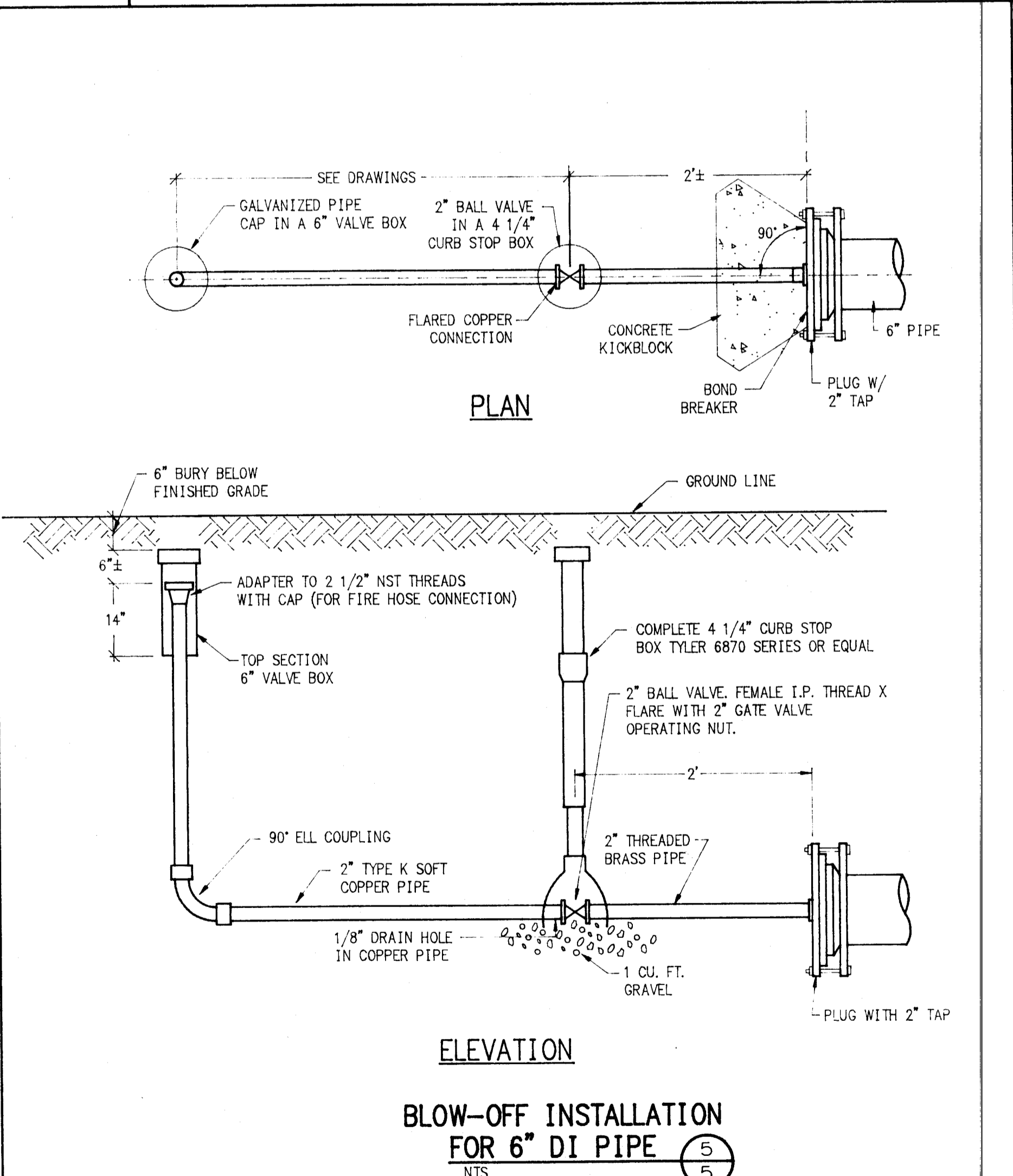
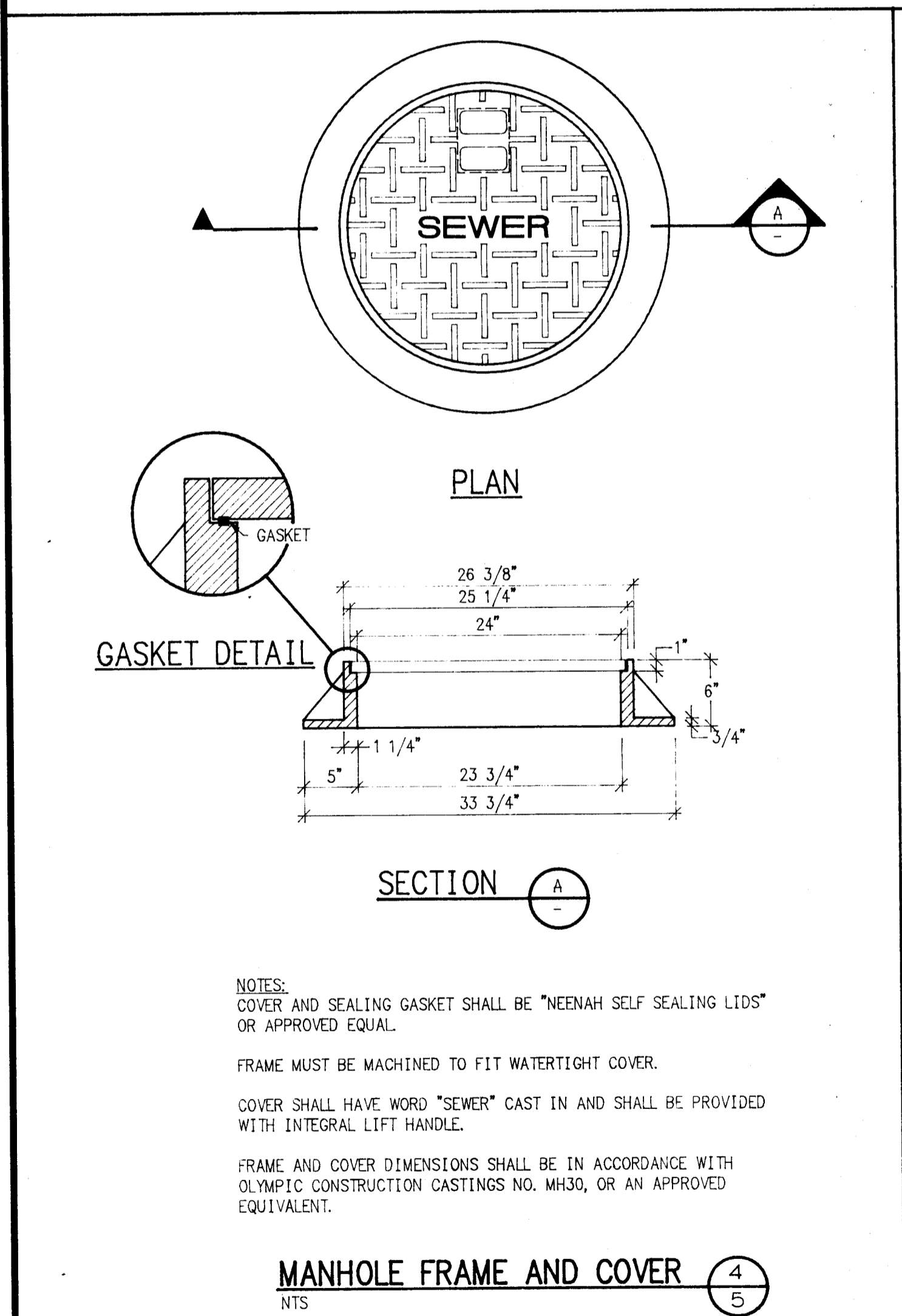
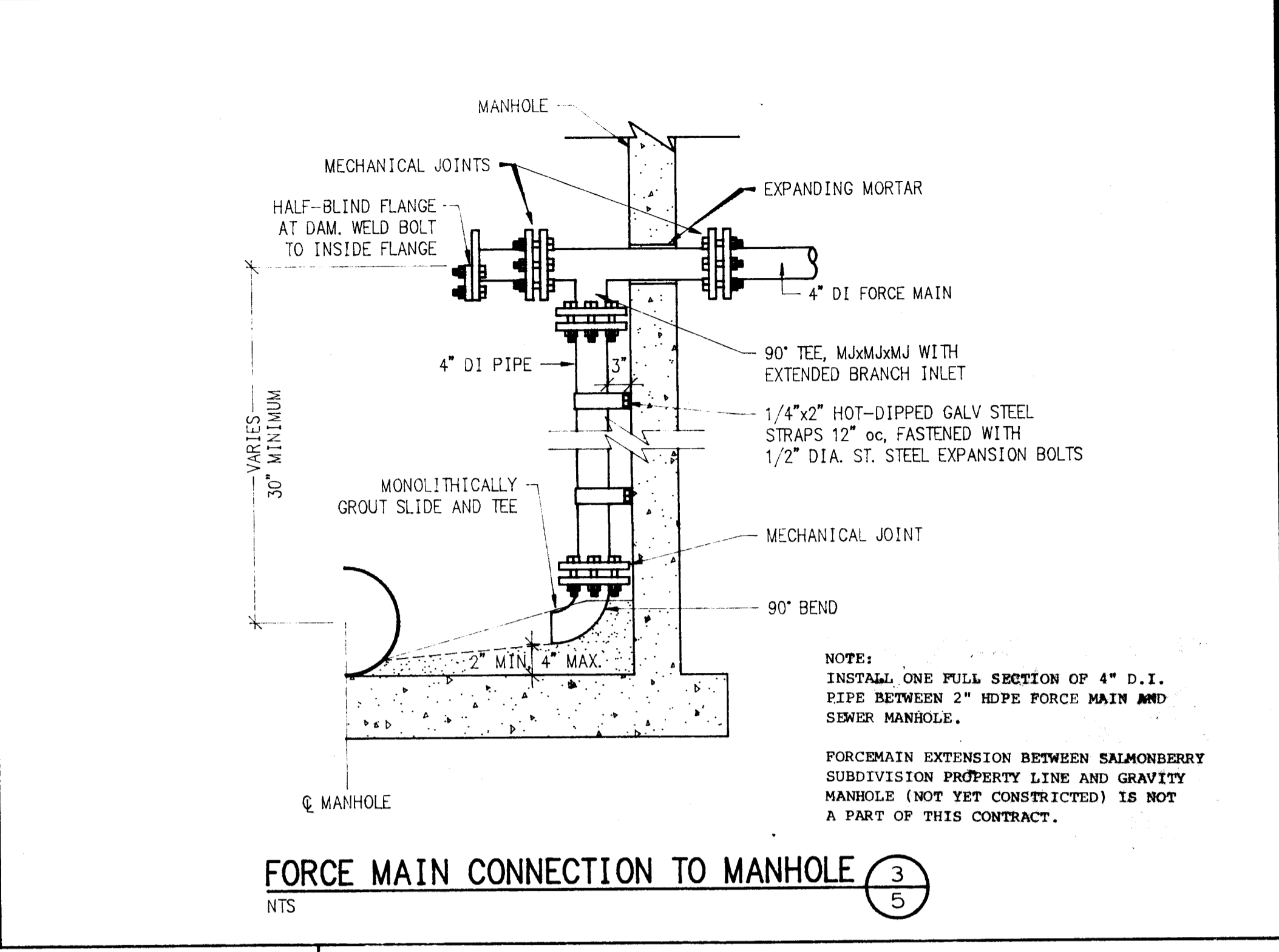
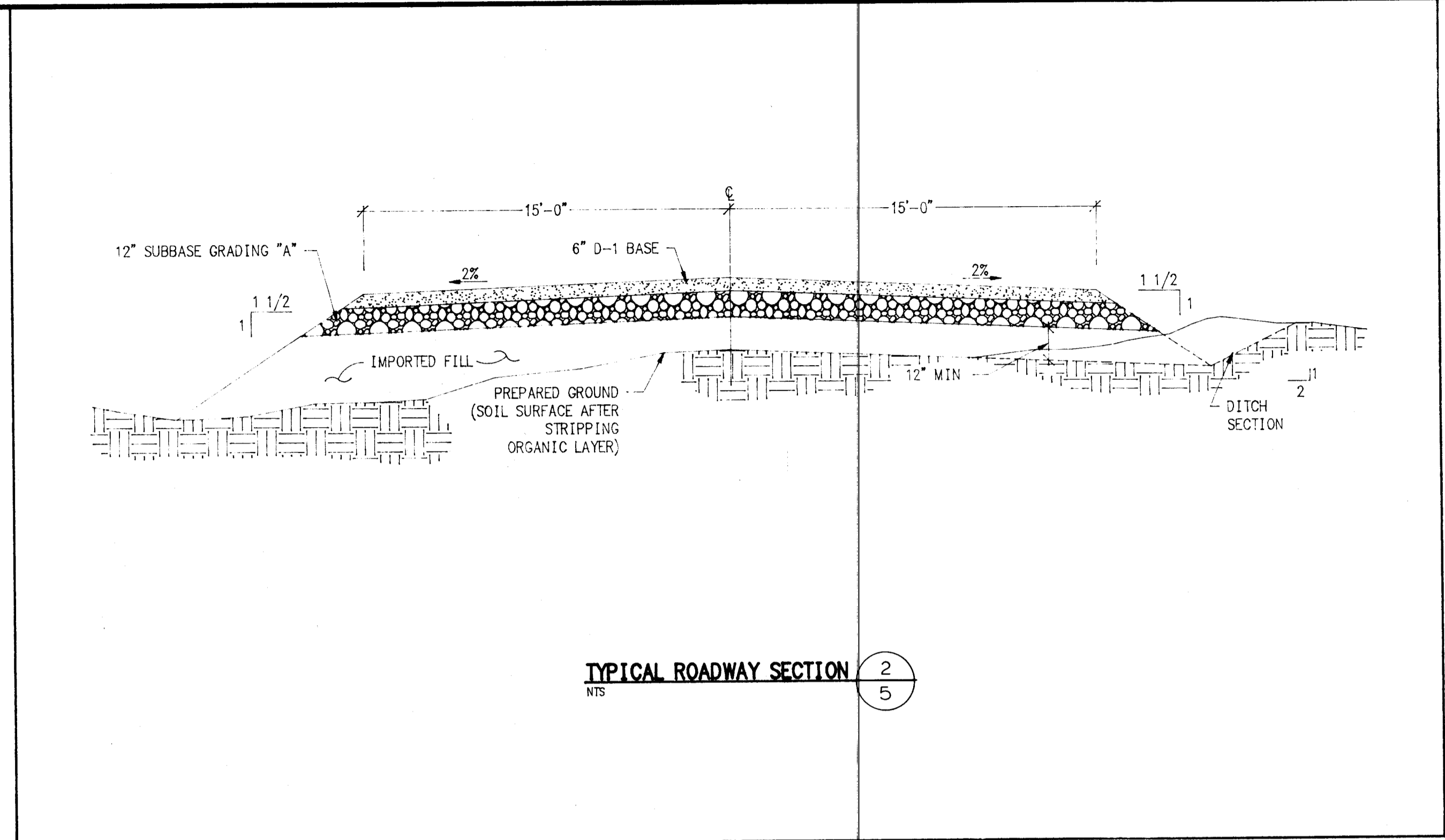
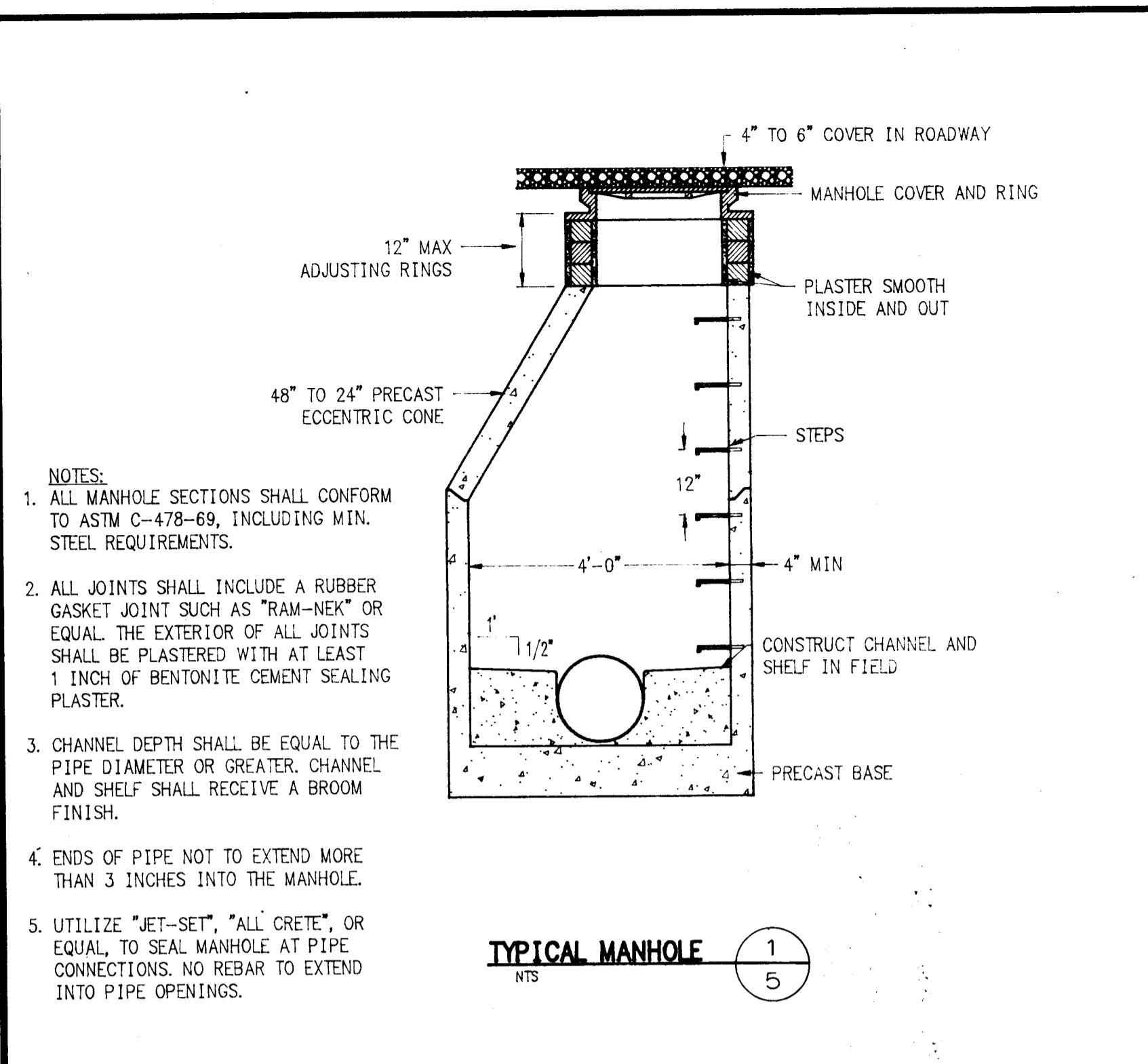


PAGE 2A APR 26, 1994 • 15:16:27

ENGINEER'S SEAL

DESIGNED: PATRICK K O'NEILL
DRAWN: GDS/ACAD
CHECKED: PATRICK K O'NEILL
DATE: 5-5-94
DATE OF PLAT: 5-5-94
SCALE: HORIZ= AS NOTED, VERT 1"=5'
SURVEYOR: PATRICK K O'NEILL
PROJECT NO. 23001-10-00

10 OF 20 SHEET



* - IF PIPE: USE MJ CAP W/ RETAINER GLAND
 † - IF FITTING: USE MJ PLUG BOLTED TO MJ BELL
 Δ - THRUST BLOCKS ON VALVES REQUIRED ONLY ON MAIN LINES

SIZE OF PIPE	90° BEND/TEE/PLUG		45BEND OR LESS/CROSS		VALVES	
	MIN BEARING AREA	MIN CONC VOL CU YD	MIN BEARING AREA	MIN CONC VOL CU YD	MIN CONC VOL CU YD	MIN CONC VOL CU YD
4"	2.3	0.3	1.0	0.25	N/A	N/A
6"	3.0	0.3	1.6	0.25	0.25	
8"	5.3	0.5	3.0	0.3	0.5	
10"	8.3	0.75	4.5	0.5	0.5	
12"	12.0	1.0	6.5	0.75	0.5	
14"	16.5	1.0	9.0	0.75	0.75	
16"	21.8	1.25	12.0	1.0	0.75	
18"	27.0	1.50	15.0	1.0	1.0	
20"	34.0	1.75	18.0	1.5	1.0	
24"	48.0	2.0	26.3	1.5	1.0	

NOTES:
 1. THRUST BLOCKS ARE REQUIRED WHENEVER PIPELINE CHANGES DIRECTION; CHANGES SIZE, DEAD ENDS, OR DEVELOPS THRUST AT VALVES.
 2. VOLUME AND BEARING SURFACE OF 2500 PSI CONC THRUST BLOCKS, BASED ON 150 PSI PRESSURE AND SOIL BEARING CAPACITY OF 2000 PSF ALL OTHER PRESSURE AND/ OR SOIL CONDITIONS ARE SUBJECT TO ENGINEERS REVIEW AND APPROVAL.
 3. CONCRETE THRUST BLOCKING SHALL BE POURED IN PLACE BETWEEN THE FITTING AND UNDISTURBED EARTH. MATERIAL BEHIND THE THRUST BLOCKS, DEEMED INADEQUATE BY THE ENGINEER, SHALL BE REMOVED AND REPLACED BY A BALLAST MATERIAL, THE EXTENT AND QUALITY OF PLACEMENT MATERIAL TO BE DETERMINED BY THE ENGINEER.
 4. THRUST BLOCKS SHALL BE POURED SO JOINTS OF FITTINGS REMAIN CLEAR.

(2) 3/4" Ø RODS WITH ASPHALTIC COATING

THRUST BLOCKING 7/5

GREG SCHEFF & ASSOCIATES
 LAND SURVEYORS & ENGINEERS

BOX 1849 SITKA, ALASKA 99835
 (907) 747-6700

BOX 1331 WRANGELL, ALASKA 99929
 (907) 874-2177

PROJECT: SALMONBERRY SUBDIVISION IMPROVEMENTS MISC. DETAILS

CLIENT: CITY OF CRAIG, PO BOX 23, CRAIG, ALASKA 99921

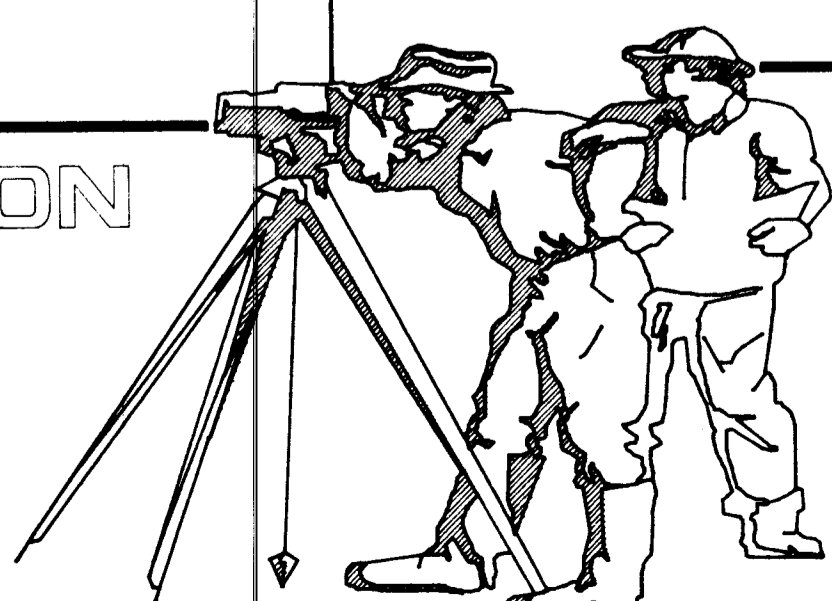
SHT03 FEB 23, 1994 • 10:01:27

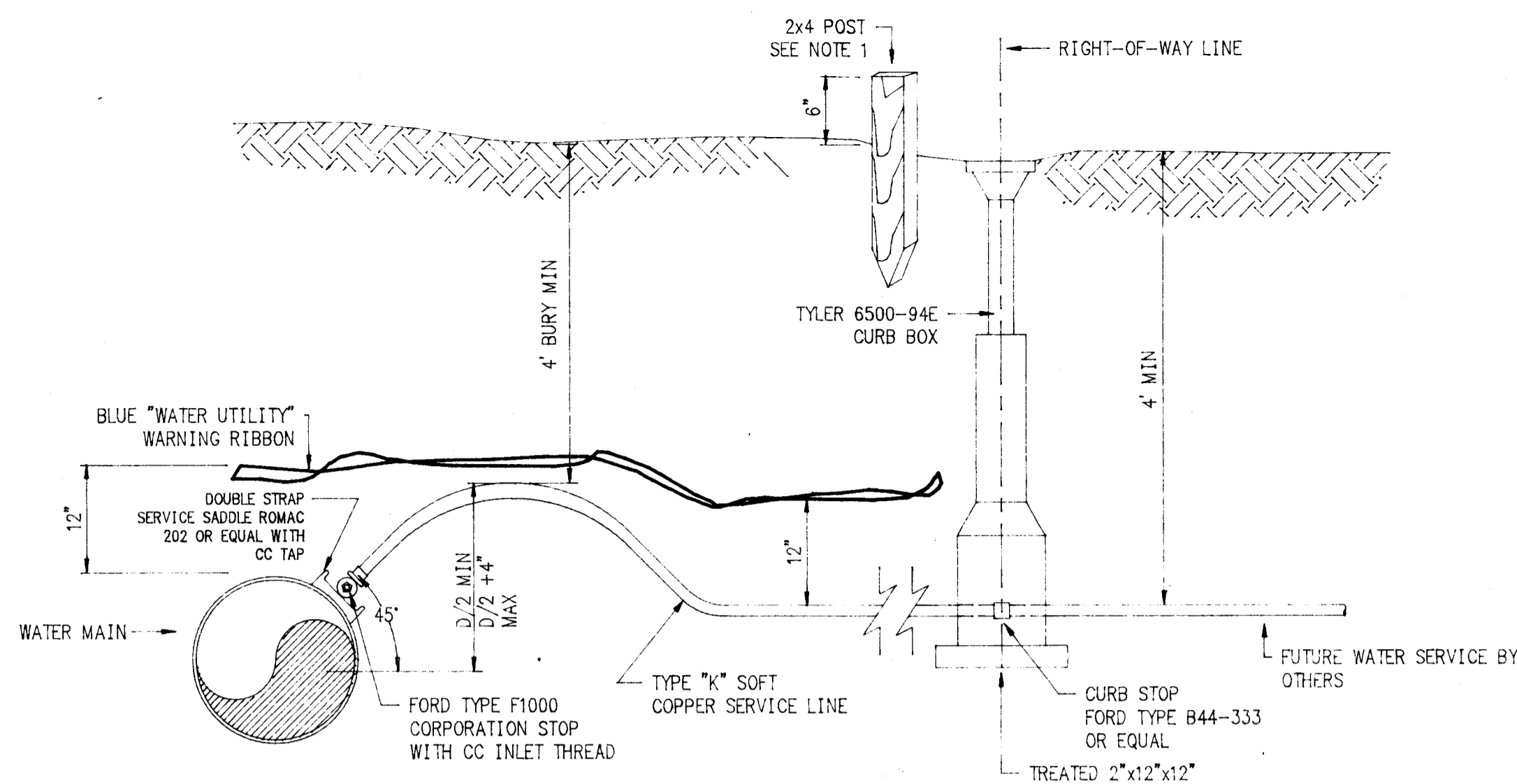
ENGINEER'S SEAL

DESIGNED: PATRICK K O'NEILL
 DRAWN: GDS/ACAD
 CHECKED: PATRICK K O'NEILL
 DATE OF SURVEY: N/A
 DATE OF PLAT: 5-5-94
 SCALE: AS NOTED
 SURVEYOR: PATRICK K O'NEILL

PROJECT NO. 23001-10-00

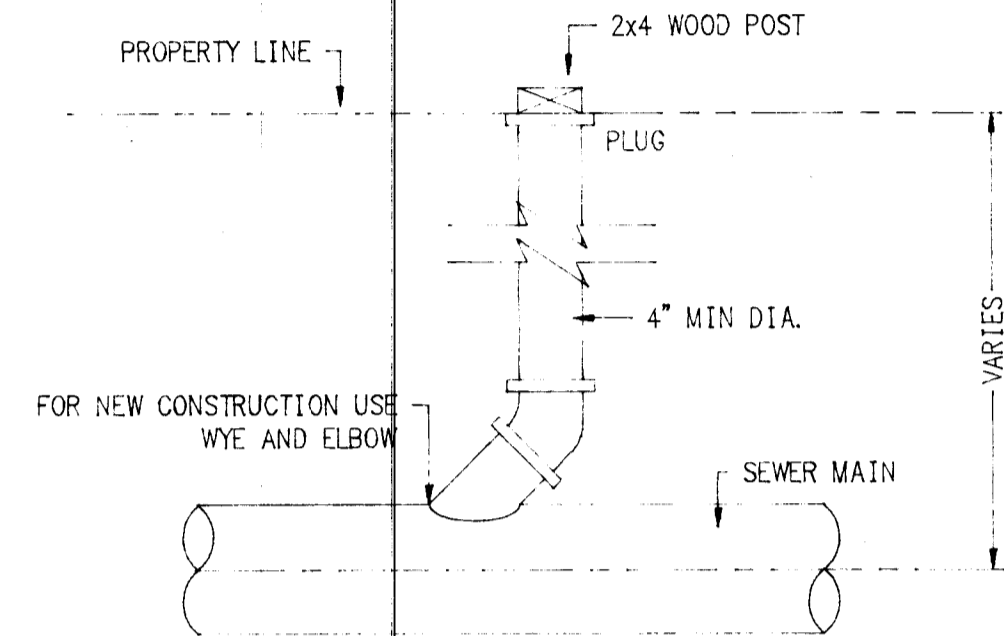
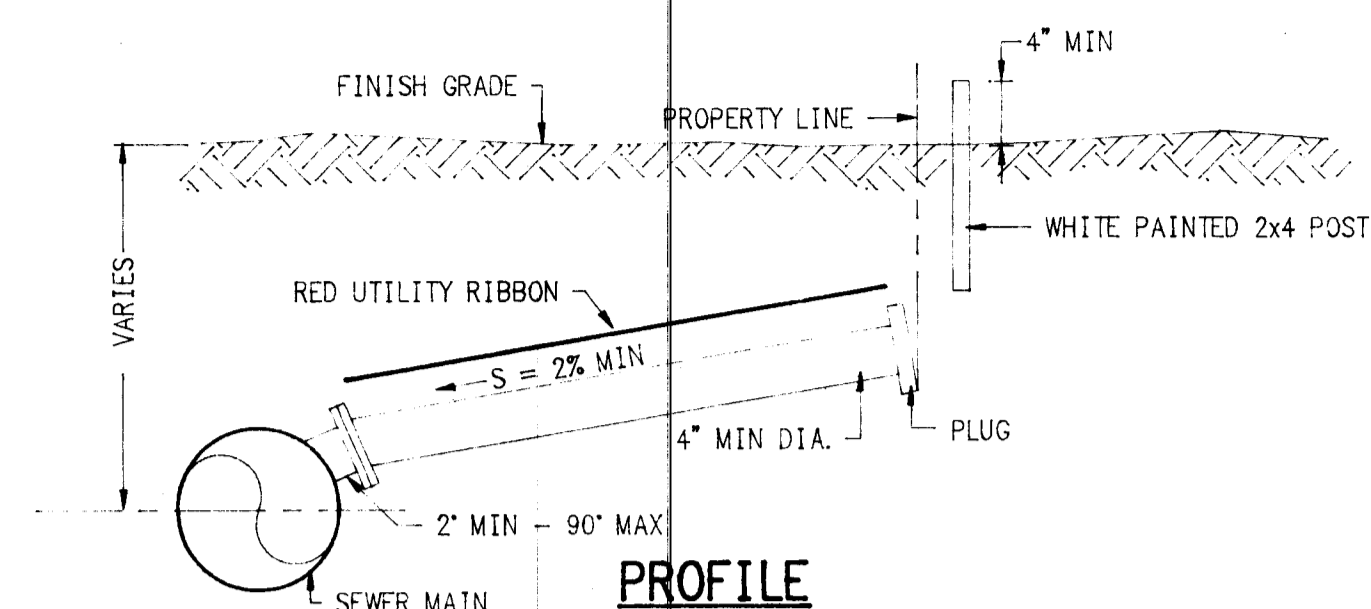
SHEET 08 OF 08





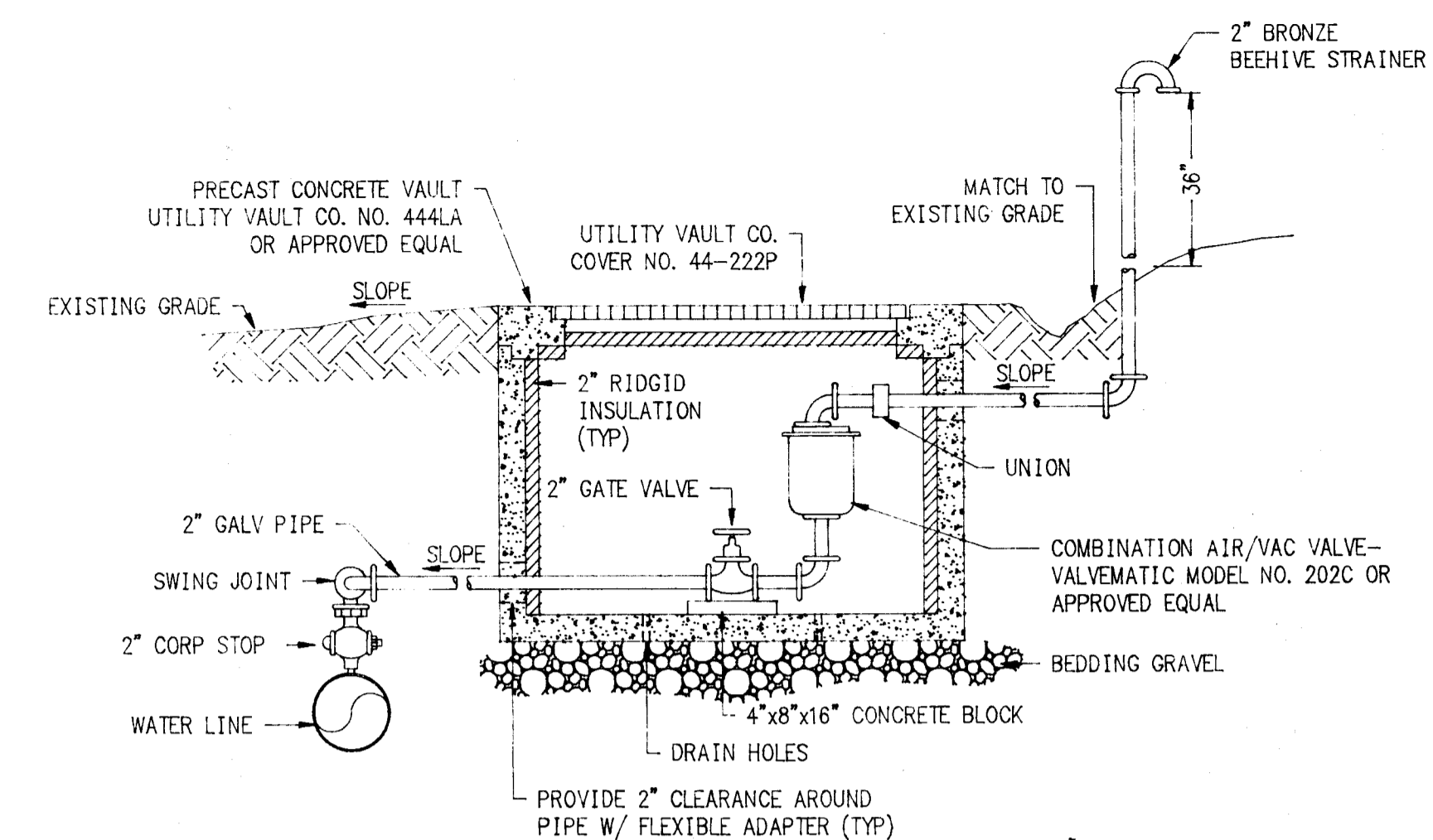
1. AT CURB STOP, MARK EXISTING SERVICE WITH 2x4 POST (4'-0" LONG) PAINTED ORANGE.
2. COPPER TUBE CONNECTIONS SHALL BE COMPRESSION COUPLINGS.
3. PROVIDE 6" OF BEDDING AROUND SERVICE LINES.

WATER SERVICE CONNECTION (1/4)
NTS



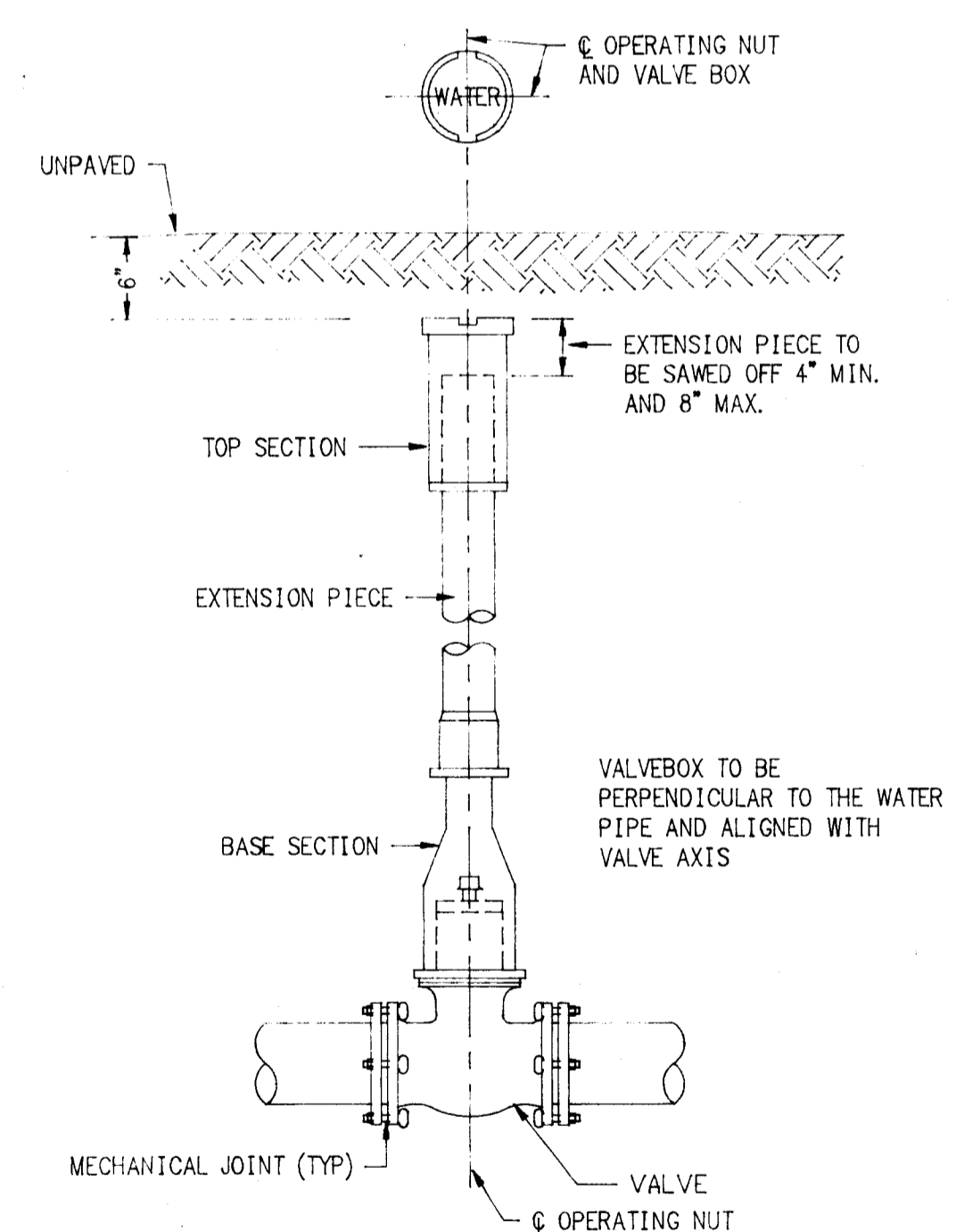
- NOTES:
1. SERVICE CONNECT 4" MIN. DIA.
 2. ACCEPTABLE PIPE WITHIN R/W: DUCTILE IRON CL. 2
 3. MARK EXISTING SERVICE WITH 2x4 POST (4'-0" LONG) PAINTED WHITE.

PLAN SEWER LATERAL CONNECTION (2/4)
NTS

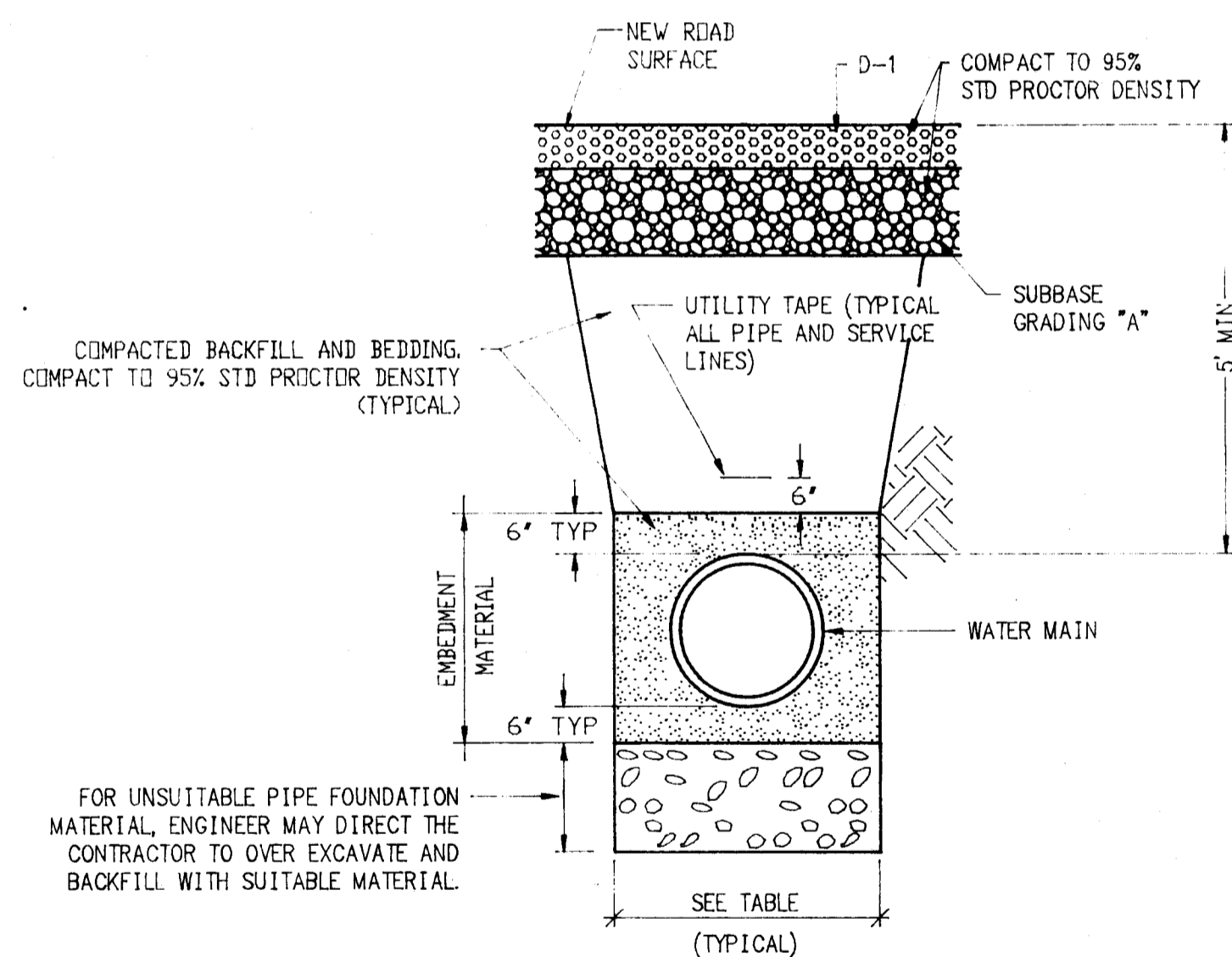


- NOTES:
1. PIPING TO VALVE SHALL BE 2".
 2. ROUTE SURFACE DRAINAGE AWAY FROM ACCESS COVER.
 3. LOCATE CHAMBER ON UPHILL SIDE OF ROAD WITHIN RIGHT OF WAY.
 4. PROVIDE INSULATION TO 2" PIPE WHERE DEPTH OF COVER IS LESS THAN 4".
 5. VENT PIPE MAY BE LOCATED TO SIDE OF CHAMBER.

AIR/ VACUUM RELIEF VALVE ASSEMBLY (3/4)
NTS (CR103)

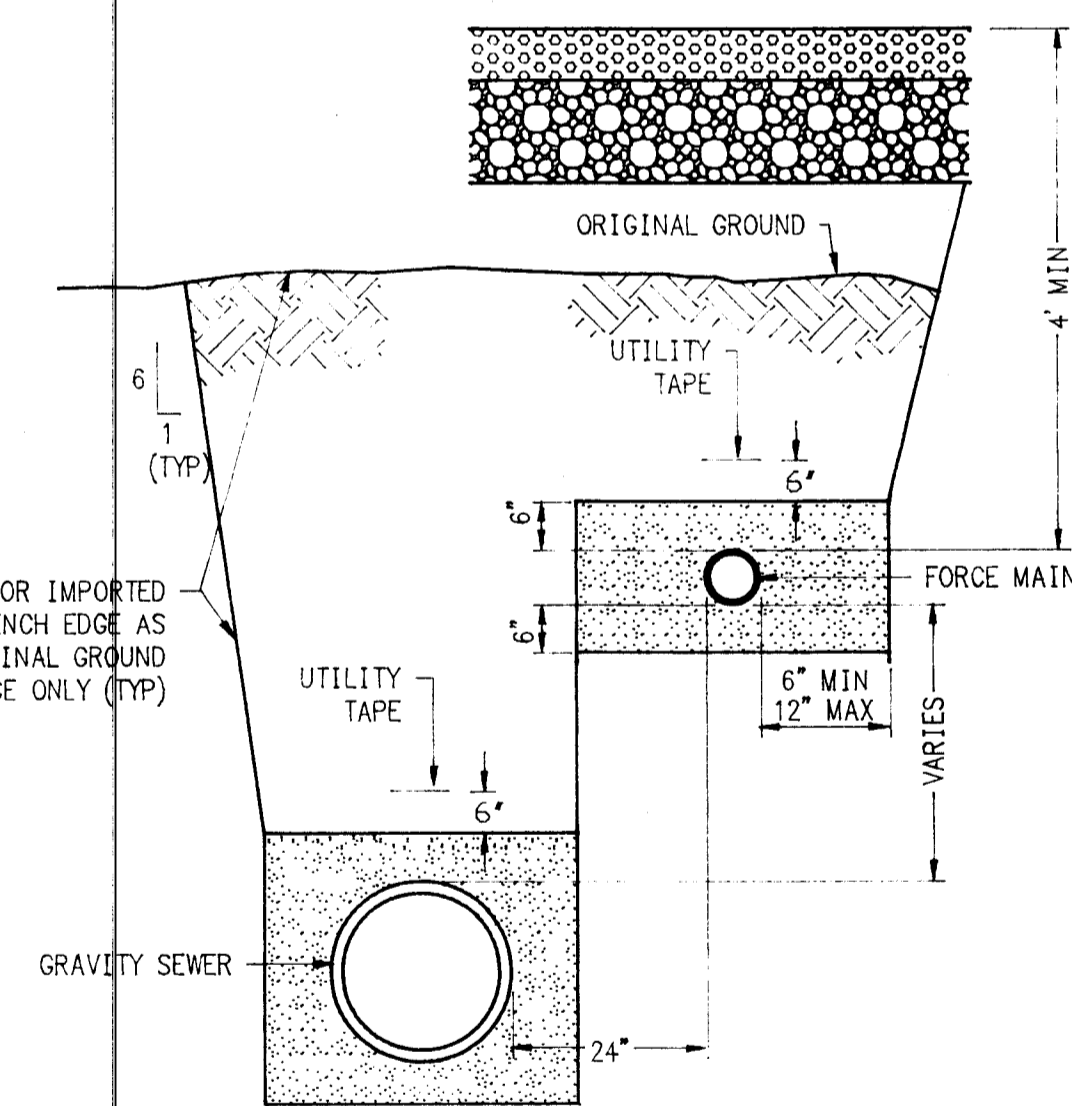


VALVE BOX (4/4)
NTS



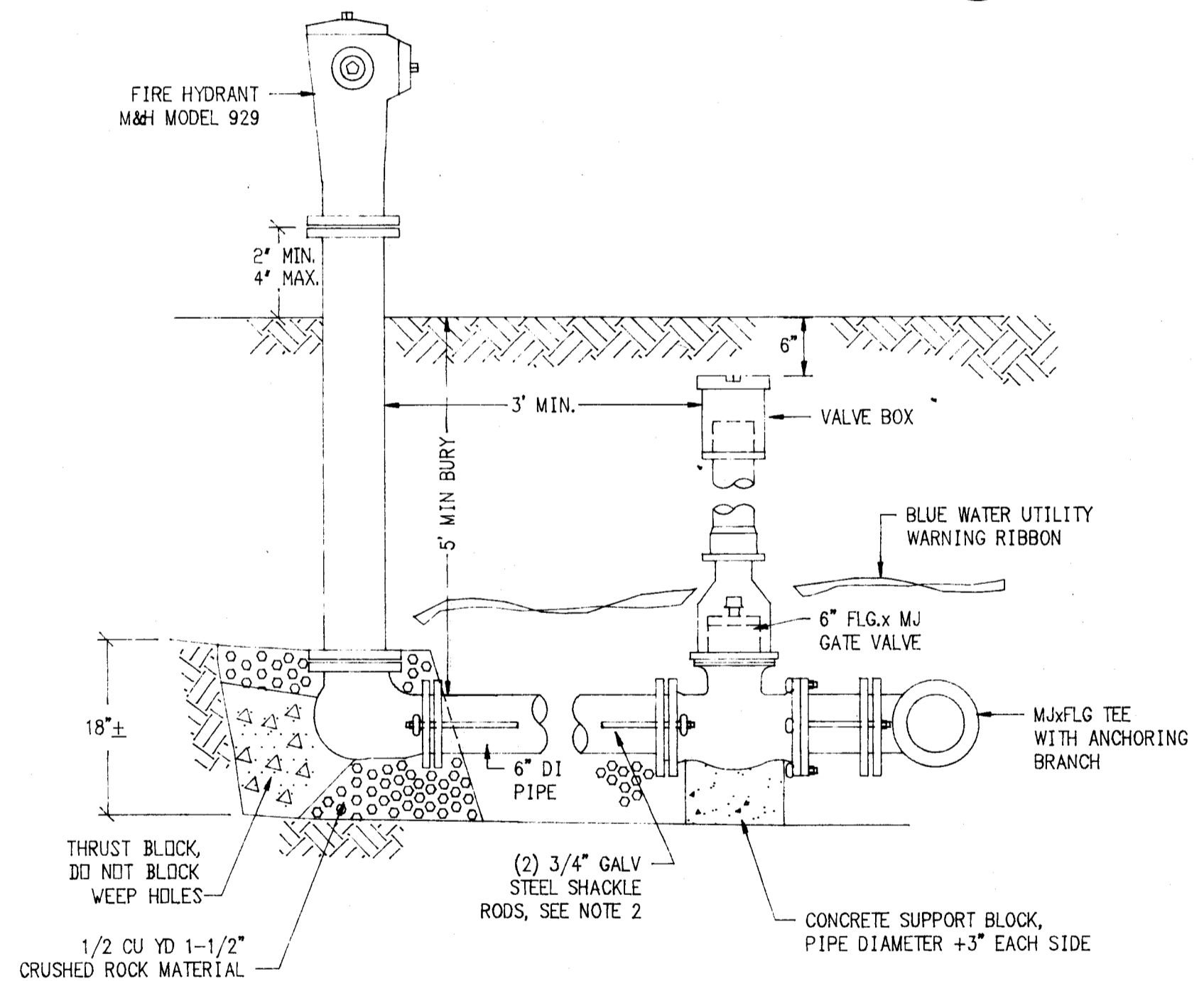
PIPE Ø	MIN WIDTH	MAX WIDTH
4"	1'-4"	2'-4"
6"	1'-6"	2'-6"
8"	1'-8"	2'-8"

WATER MAIN TYPICAL SECTION



GRAVITY SEWER & FORCE MAIN TYPICAL SECTION

PIPE EMBEDMENT & TYPICAL TRENCH SECTION DETAILS (5/4)
NTS



- NOTES:
1. HYDRANT BARREL MUST BE PLUMB.
 2. ALL-THREAD OR MEG-A-LUG ARE ACCEPTABLE ALTERNATIVE FOR THE MECHANICAL JOINT RESTRAINT PIPE SHOWN. SUBSTITUTION SHALL BE APPROVED BY THE ENGINEER.
 3. NO BENDS SHALL EXCEED 11 1/4" BETWEEN THE HYDRANT AND THE MAIN.
 4. ALL HYDRANTS SHALL BE PAINTED OSHA FIRE ENGINE RED.

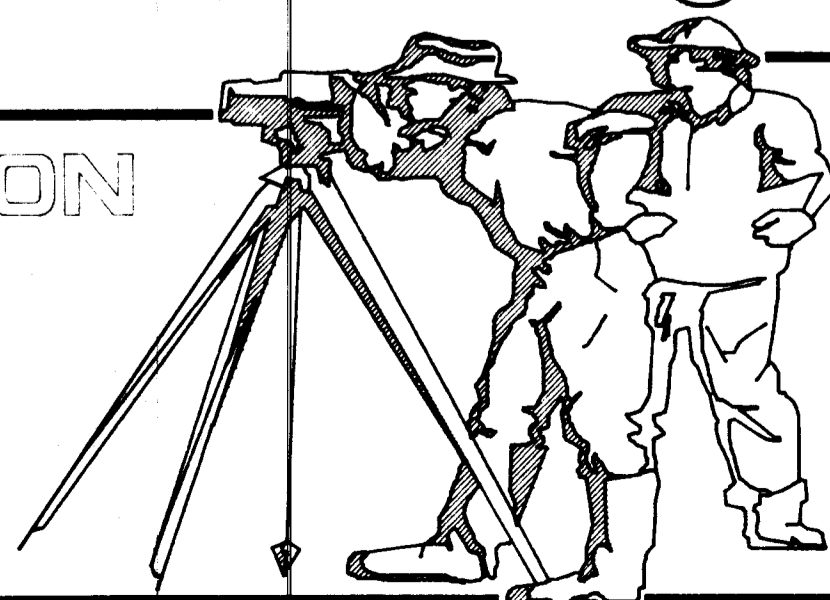
FIRE HYDRANT ASSEMBLY DETAIL (6/4)
NTS

GREG SCHEFF & ASSOCIATES
LAND SURVEYORS & ENGINEERS

BOX 1849 SITKA, ALASKA 99835
(907) 747-6700
BOX 1331 WRANGELL, ALASKA 99929
(907) 874-2177

PROJECT: SALMONBERRY SUBDIVISION
IMPROVEMENTS
MISC. DETAILS

CLIENT: CITY OF CRAIG, PO BOX 23, CRAIG, ALASKA 99921



SHT04 FEB 21, 1994 • 15:14:46

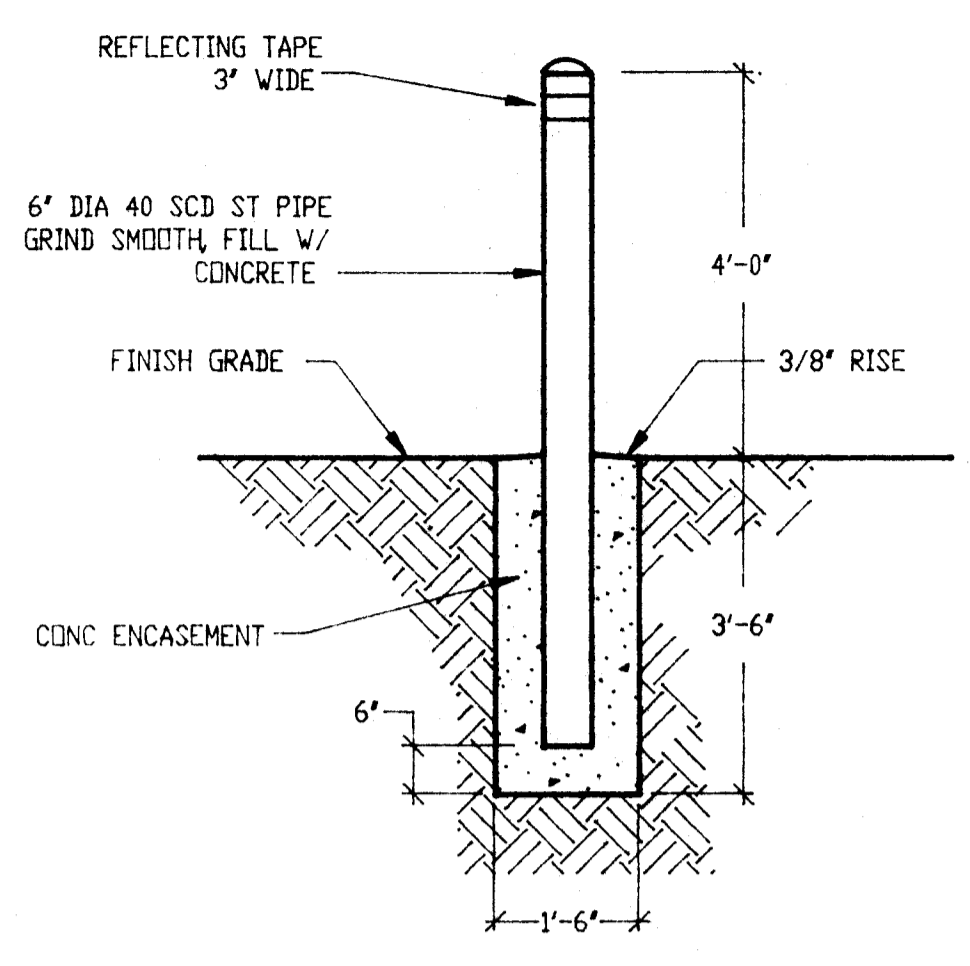
ENGINEER'S SEAL

DESIGNED: PATRICK K O'NEILL
DRAWN: GDS/ACAD
CHECKED: PATRICK K O'NEILL
DATE OF SURVEY: N/A
DATE OF PLAT: 5-5-94
SCALE: AS NOTED
SURVEYOR: PATRICK K O'NEILL

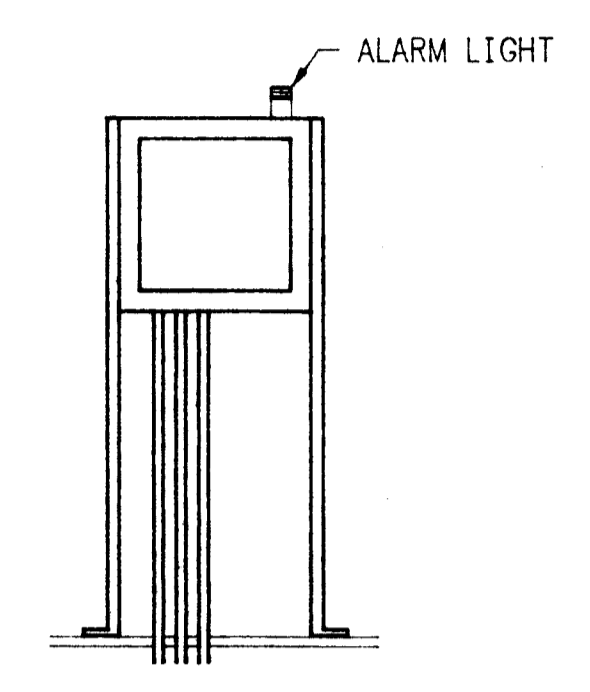
PROJECT NO. 23001-10-00

SHEET 4 OF 5

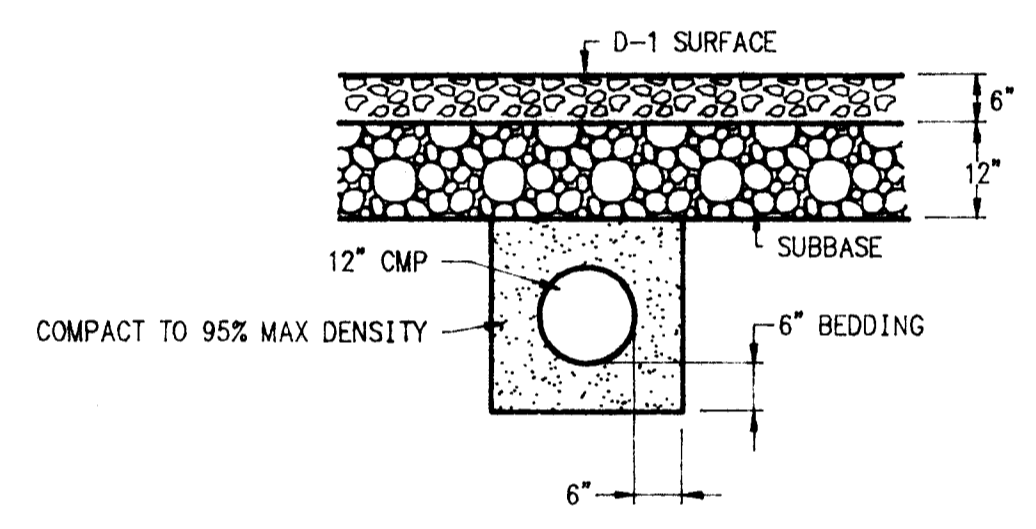
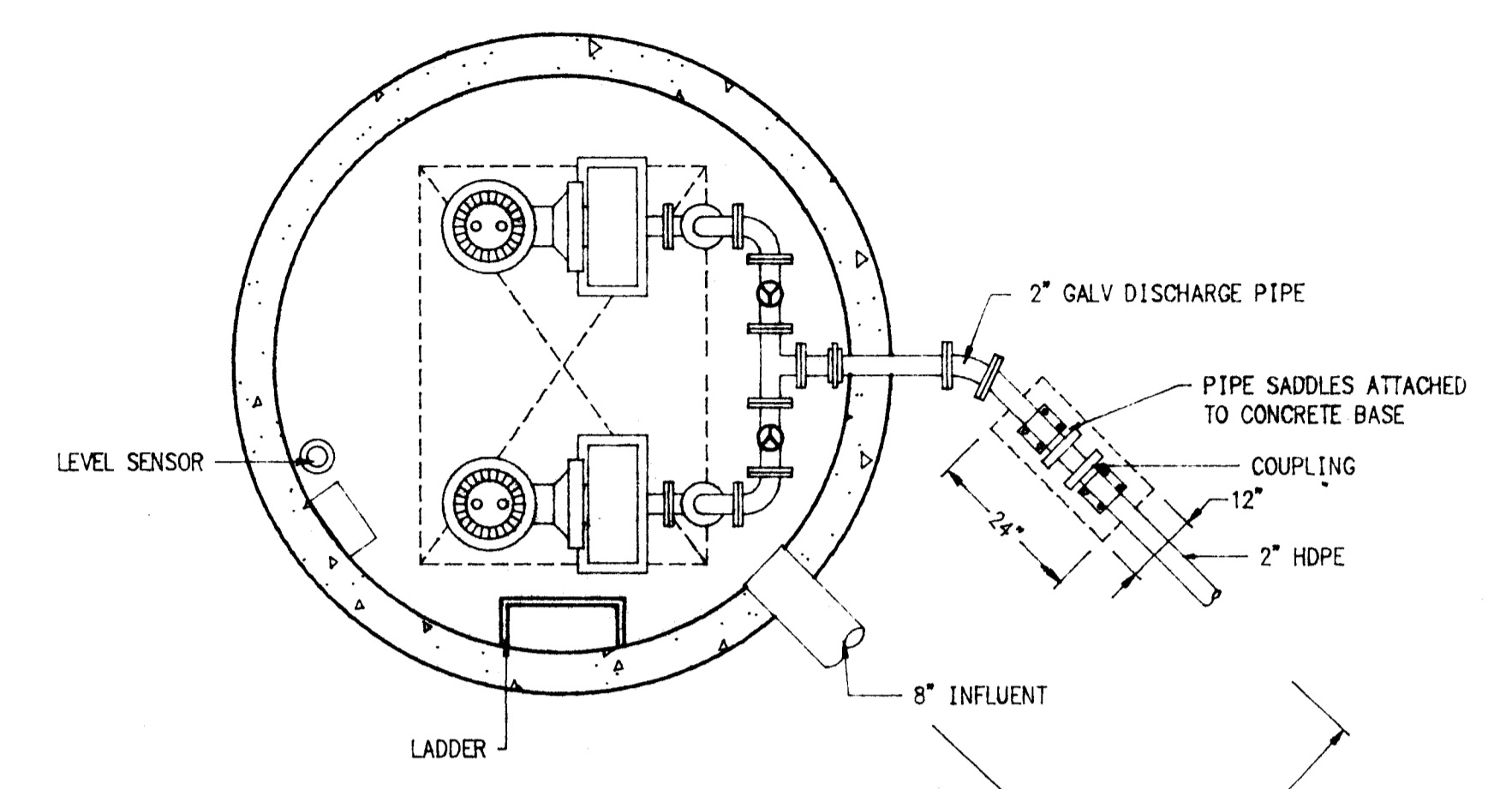
- NOTES:**
- IT SHALL BE THE CONTRACTOR'S RESPONSIBILITY TO FIELD VERIFY THE EXACT HORIZONTAL AND VERTICAL LOCATIONS OF ALL EXISTING UTILITIES AND RECORD CHANGES ON CONTRACTOR'S AS-BUILT DRAWINGS.
 - THE CONTRACTOR SHALL MAINTAIN AND RESTORE ANY EXISTING DRAINAGE FACILITIES TO PROVIDE POSITIVE DRAINAGE WITHIN THE RIGHT-OF-WAY.
 - THE CONTRACTOR SHALL BE RESPONSIBLE FOR PROTECTING ALL EXISTING UTILITIES INCLUDING SHORING OF UTILITY POLES. PROTECTION OF UTILITIES SHALL BE IN ACCORDANCE WITH THE REQUIREMENTS OF THE PARTICULAR UTILITY.
 - A MINIMUM OF ONE LANE OF OPEN TRAFFIC MUST BE MAINTAINED ON PORT ST. NICHOLAS ROAD AT ALL TIMES.
 - SURVEY MONUMENTS DISTURBED BY CONSTRUCTION WORK ARE TO BE REPLACED BY A LAND SURVEYOR LICENSED IN THE STATE OF ALASKA, PRIOR TO FINAL PAYMENT OF THE CONTRACT.
 - SURVEY DATA AND PROJECT BENCHMARK INFORMATION ARE AS SHOWN ON THE COVER SHEET OF THESE PLANS.
 - THE CONSTRUCTION BASELINE FOR THESE PLANS IS THE CENTERLINE OF ELIZABETH COURT. STATION 04+30 IS AT THE PORT ST. NICHOLAS RIGHT-OF-WAY BOUNDARY.



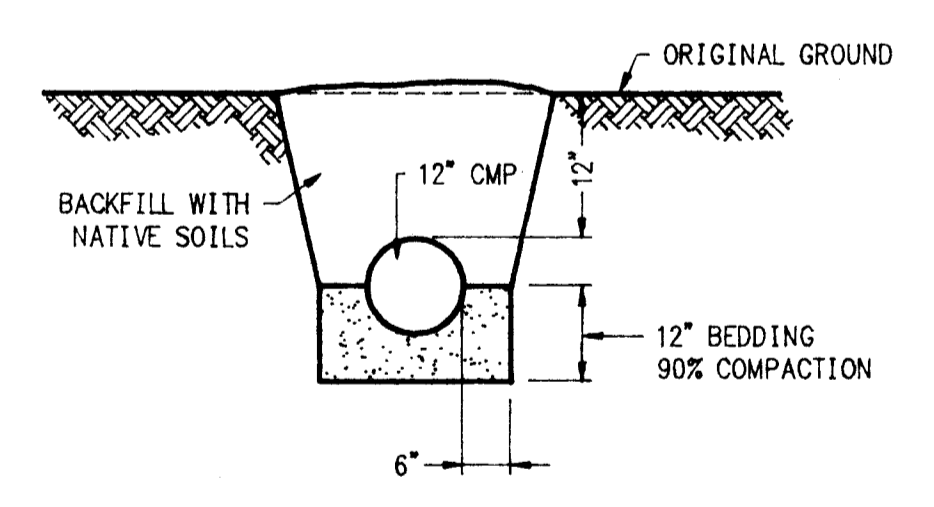
VEHICULAR BUMPER GUARD (3/5)
NTS



CONTROL PANEL DETAIL (5/5)
NTS

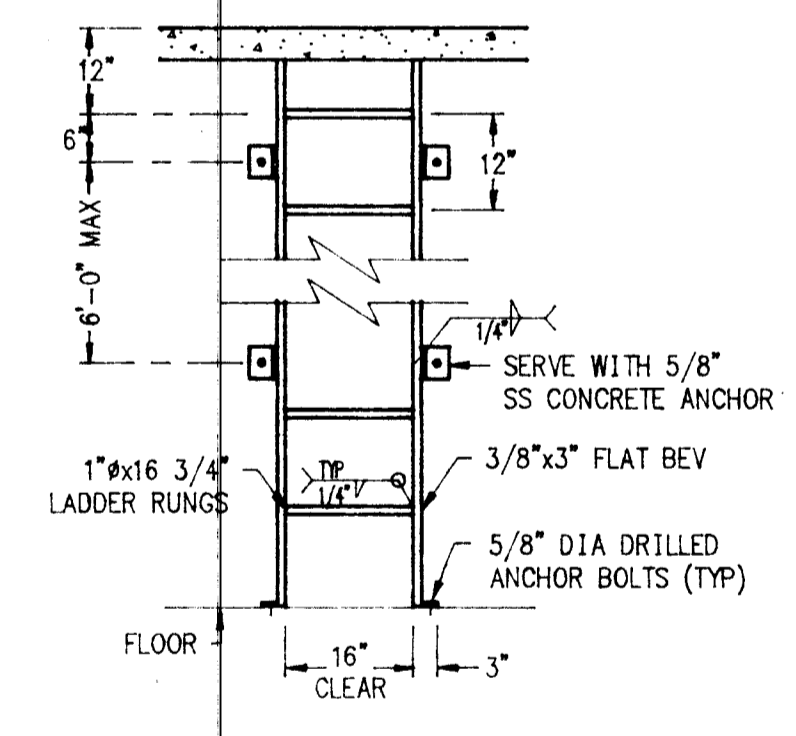


CULVERT SECTION - ROAD CROSSING (1/5)
NTS

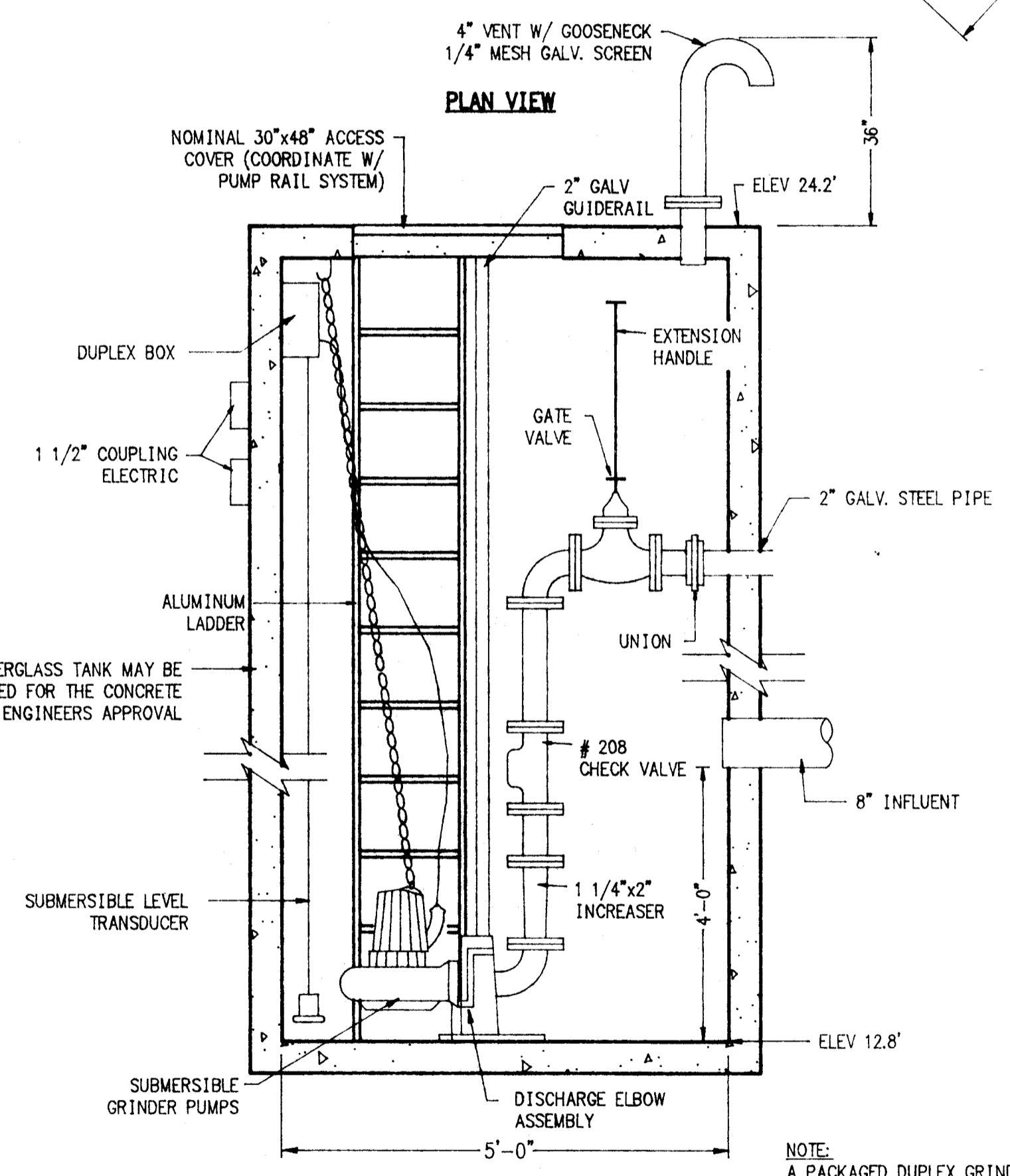


CULVERT SECTION - DRAIN TO SHORELINE (2/5)
NTS

PUMP STATION INFORMATION	
DESCRIPTION	ELEVATION
TOP OF PUMP STATION	24.2
DISCHARGE INVERT	18.0
INFLUENT INVERT	18.8
BOTTOM OF PUMP STATION	12.8
ALARM ON	16.8
LAG PUMP ON	16.3
LEAD PUMP ON	15.8
PUMPS OFF	13.8



LADDER DETAIL (4/5)
NTS



TYPICAL PUMP STATION (6/5)
NTS

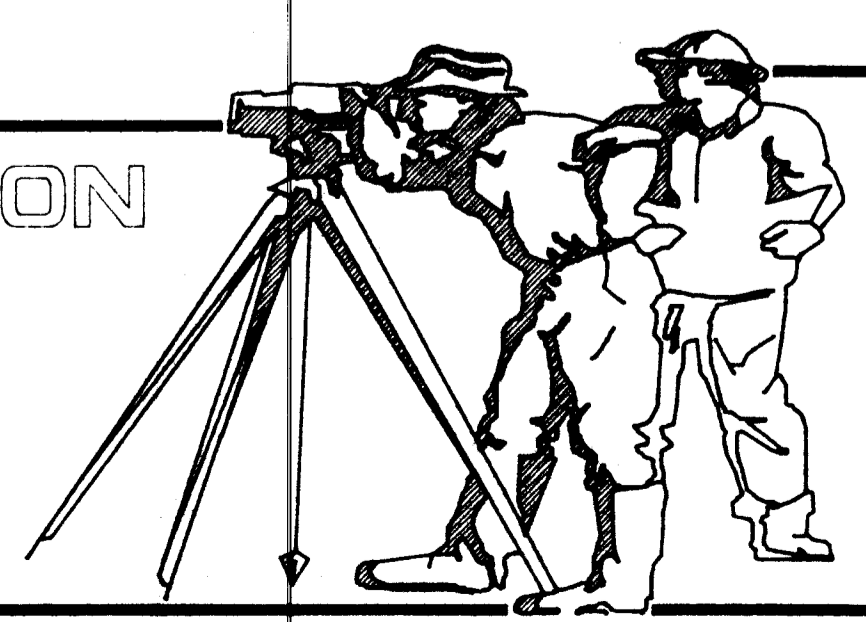
NOTE:
A PACKAGED DUPLEX GRINDER PUMP LIFT STATION, WITH FIBERGLASS BASIN, STEEL TOP, AND COMPLETE WITH INTERNAL PIPING AND VALVES AS SHOWN, MAY BE SUBSTITUTED FOR THE COMPONENT SYSTEM OF THE PLANS, WITH APPROVAL OF THE ENGINEER.

GREG SCHEFF & ASSOCIATES
LAND SURVEYORS & ENGINEERS

BOX 1849 SITKA, ALASKA 99835
(907) 747-6700

BOX 1331 WRANGELL, ALASKA 99929
(907) 874-2177

PROJECT: SALMONBERRY SUBDIVISION IMPROVEMENTS
PUMP STATION DETAILS AND GENERAL NOTES
CLIENT: CITY OF CRAIG, PO BOX 23, CRAIG, ALASKA 99921



SHT05 FEB 21, 1994 • 15:14:46

ENGINEER'S SEAL

DESIGNED: PATRICK K O'NEILL
DRAWN: GDS/ACAD
CHECKED: PATRICK K O'NEILL
DATE OF SURVEY: N/A
DATE OF PLAT: 5-5-94
SCALE: AS NOTED
SURVEYOR: PATRICK K O'NEILL

PROJECT NO. 23001-10-00

SHEET 05 OF 05