

Original Plat transmitted to Ketchikan Recording District
and recorded on Sept. 12, 1995 as Plat # 95-57.

DUPLICATE ORIGINAL

Sheet 1 of 14 Sheets

ALASKA NATIVE CLAIMS SETTLEMENT ACT
(ANCSA) SECTION 14 (C) TRACTS A THROUGH M
P.L. 92-203 (85 STAT. 688, 702, 703)
SHAAN-SEET, INCORPORATED
AT
CRAIG, ALASKA
AND
THE DEPENDENT RESURVEY OF PORTIONS
OF THE NORTH AND EAST BOUNDARIES
AND SUBDIVISION OF PORTIONS OF
TOWNSHIP 74 SOUTH, RANGE 81 EAST
COPPER RIVER MERIDIAN, ALASKA
AND THE DEPENDENT RESURVEY
OF PORTIONS OF U.S. SURVEY No. 3857

This plat contains the entire survey record.
The history of surveys in and around the Craig area is listed on
sheet No. 4 of this document.

This survey was executed by David M. Klein, Cadastral
Surveyor, June 8 through September 30, 1993, in accordance
with the principles set forth in the Manual of
Surveying Instructions, 1973; Special Instructions approved
June 2, 1993; the Craig ANCSA 14(c) Map of Boundaries approved
June 5, 1992, and assignment Instructions dated June 8, 1993.

Field Assistants were:

Joseph P. Burns, Supervisory Land Surveyor
Michael O. Harmening, Land Surveyor
Daniel H. Leslie, Land Surveyor
Timothy A. Quincy, Land Surveyor
Roger E. Blouch, Student Trainee (LS)
William R. Tackman, Student Trainee (LS)
Gary L. McIntyre, Surveying Technician
Jon T. Bolling, Volunteer
Luanne Leslie, Volunteer

Area: 513.33 Acres.

The azimuth was obtained with the Global Positioning System
(GPS), using static and pseudo-kinematic positioning techniques,
and refers to the true meridian.

The geographic position of the Meander Corner for Sections
5 and 32, Townships 73 and 74 South, Range 81 East, Copper
River Meridian, Alaska, identical with corner No. 1, ANCSA 14(c)
Tract A, Block 2, as determined from the record of Township 73
South, Range 81 East, Copper River Meridian, Alaska, is:

Latitude: 55° 29' 22.77" NORTH
Longitude: 133° 08' 10.75" WEST
NAD 27

The magnetic declination was directly observed.

This Survey is situated in and around the city of Craig,
Alaska, within Townships 74 South, Ranges 81 and 82 East,
Copper River Meridian, Alaska.

The land consists mainly of steep, semi-rocky, terrain; the
vegetation varies from mature old growth forest to logged
forest with young thick regrowth and brush, the latter being
the most prominent.

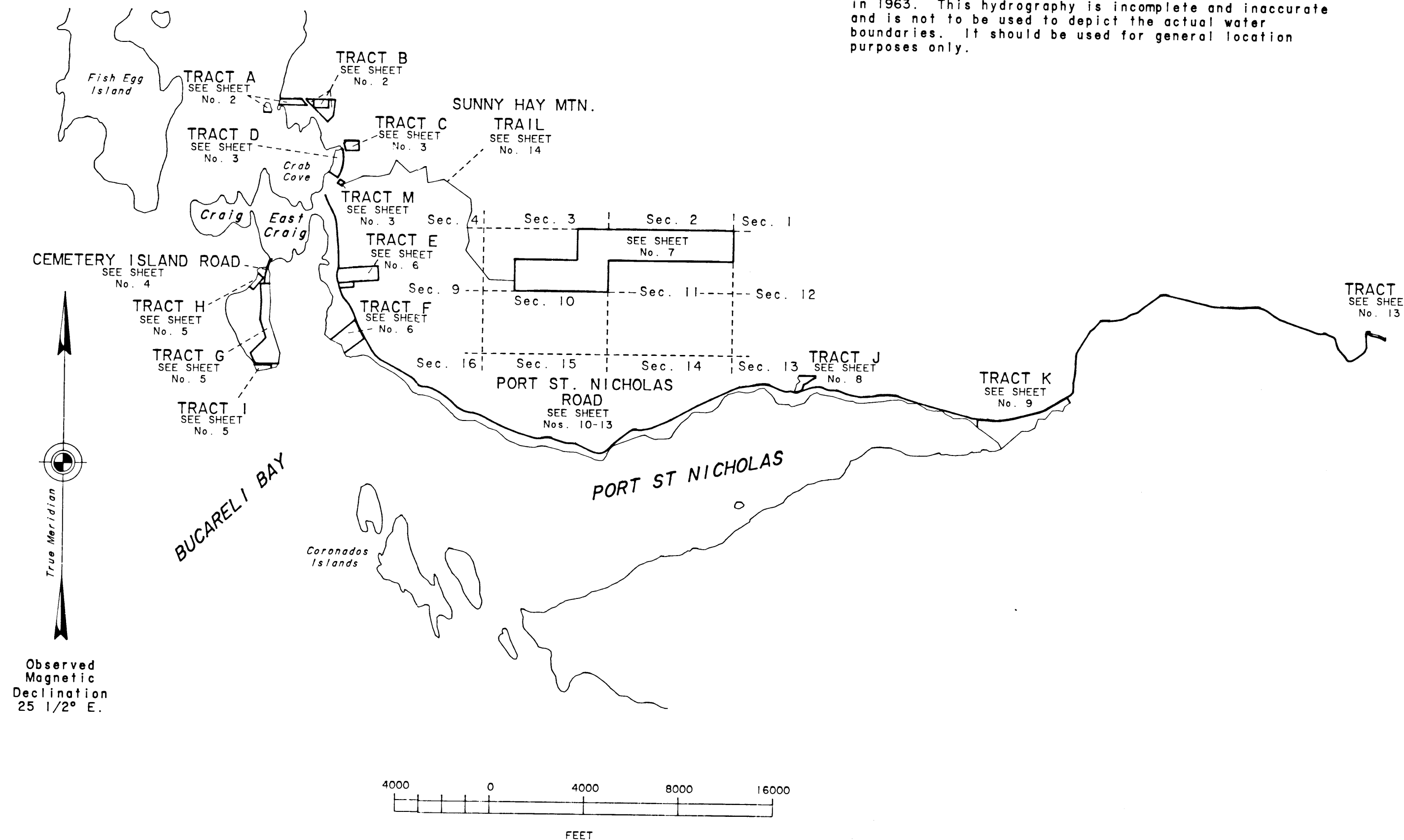
UNITED STATES DEPARTMENT OF THE INTERIOR
BUREAU OF LAND MANAGEMENT
Anchorage, Alaska

The survey represented by this plat, sheets 1 - 14,
having been properly executed and examined, is
hereby accepted for having fulfilled the require-
ments of Section 14(c) of the Alaska Native Claims
Settlement Act.

For the Director

Debra D. Christ 30 August 1995
Date
Deputy State Director for Cadastral Survey, Alaska

NOTE:
Hydrography shown on this sheet was digitized from U.S.
Geological Survey quadrangle maps "CRAIG (B-4),"
1949 edition, with limited revisions in 1986; and
"CRAIG (B-3)," 1949 edition, with minor revisions
in 1963. This hydrography is incomplete and inaccurate
and is not to be used to depict the actual water
boundaries. It should be used for general location
purposes only.



I, David M. Klein, Cadastral Surveyor, HEREBY CERTIFY upon
honor that I have executed the ANCSA 14(c) survey depicted on
this plat, sheets 1-14, in conformity with the Special Instructions
approved June 2, 1993, the principles of survey described in the
Manual of Surveying Instructions, 1973, and in the specific manner
described on this plat.

28 July 95 *David M. Klein*
Date Cadastral Surveyor

I hereby certify that Tracts A through M, Port Saint Nicholas Road, Cemetery
Island Road, and that portion of Section 10 and Section 11, Township 74
South, Range 81 East, Copper River Meridian, Alaska, represented on this plat
of survey are on lands Interim Conveyed to Shaan-Seet, Incorporated by
Interim Conveyance No. 261 and Patent No. 50-89-0693 issued by the United
States of America; said tracts and roads also fulfill all entitlements under
the provisions of ANCSA 14(c) as requested by Shaan-Seet, Incorporated
Resolution Agreement No. 92-03, and the Craig ANCSA 14(c) Map of Boundaries
approved June 5, 1992.

9-9-95 *Paul S. ...*
Date President, Shaan-Seet Incorporated

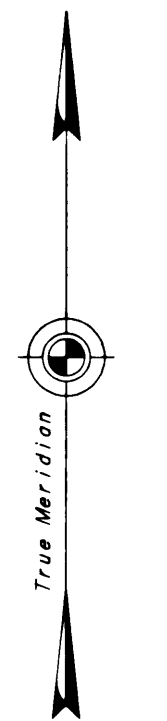
Original Plat transmitted to Ketchikan Recording District and recorded on Sept. 12, 1995 as Plat #95-57,

DUPLICATE ORIGINAL

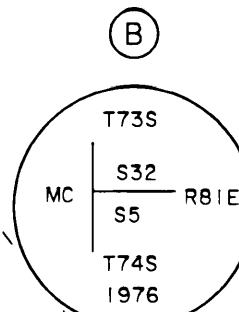
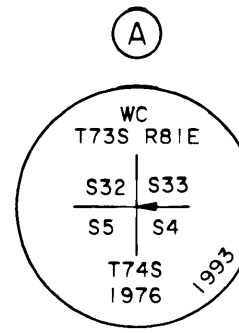
Sheet 2 of 14 Sheets

NOTE

The Craig-Klawock Highway was surveyed by the State of Alaska, Department of Highways project S-0924 (5) in 1971 and recorded in the Ketchikan Recording District, Plat No. 80-2, on January 9, 1980. Subsequent construction for this project destroyed all centerline monumentation in the area of Tracts A and B. Refer to item No. 3 in the note on the plat of Tract A, Crab Cove Heights, Plat No. 93-7. The 132 ft. wide right-of-way, 66 ft. on either side of centerline, was reconstructed based upon the existing paved roadway, the recovered right-of-way monumentation from Tract A, Crab Cove Heights, Plat No. 93-7, U. S. Survey No. 2613, and unrecorded right-of-way monumentation.



Observed Magnetic Declination 25 1/2° E.



Recovered an alum. post, 2 1/2 ins. diam., firmly set, projecting 6 ins. above the ground, with alum. cap mkd. as shown, from which the original bearing trees

A hemlock stump, 20 ins. diam., bears N. 43 1/2° E., 23.1 ft., with scribe marks visible but not discernable on a partially healed blaze.

A hemlock stump, 20 ins. diam., bears S. 68 1/2° E., 42.2 ft., with scribe marks visible on a partially healed blaze.

A spruce 18 ins. diam., bears S. 32° W., 35.0 ft. dist., with a fully healed blaze.

A hemlock 14 ins. diam., bears N. 12° W., 19.8 ft. dist., mkd. X BT.

And new bearing trees

A hemlock, 14 ins. diam., bears N. 71 1/2° E., 51.6 ft. dist., mkd X BT.

A spruce, 9 ins. diam., bears S. 12° E., 27.4 ft. dist., mkd. X BT.

Recovered an alum. post, 2 1/2 ins. diam., firmly set, projecting 6 ins. above the ground, with alum. cap mkd. as shown, from which the original bearing trees

A cedar, 14 ins. diam., bears N. 55 1/2° E., 51.5 ft. dist., with the marks T73N R81E visible on a mostly healed blaze

A spruce, 27 ins. diam., bears S. 32 1/2° E., 33.7 ft. dist., with the marks E S5 MC BT visible on a mostly healed blaze.

This point is now designated as the meander cor. to cor. No. 1, Tract A, Block 2; no marks were added to the alum. cap.

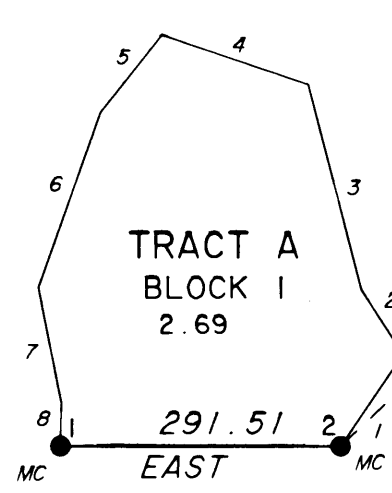
ALASKA NATIVE CLAIMS SETTLEMENT ACT (ANCSA) SECTION 14 (C) TRACTS A THROUGH M P.L. 92-203 (85 STAT. 688, 702, 703)

SHAAN-SEET, INCORPORATED AT CRAIG, ALASKA

REFERENCE SHOULD BE MADE TO SHEET No. 1 FOR SURVEY INFORMATION

The witness cor. to secs. 4, 5, 32, 33, Tps. 73 and 74 S., R. 81 E., Copper River Mer., Alaska.

KLAWOCK INLET



The meander cor. of secs. 5 and 32, Tps. 73 and 74 S., R. 81 E., Copper River Mer., Alaska.

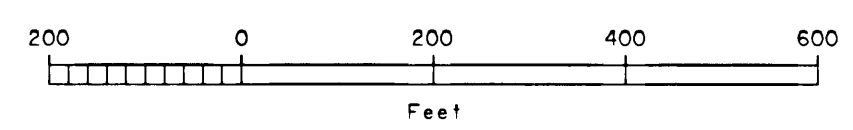
CRAB BAY

TRACT A BLOCK 1 MEANDERS
Along a gradual sloping gravel shore at the line of mean high tide.

1.	N. 34°06' E.,	115.89 ft.
2.	N. 32°47' W.,	80.63 ft.
3.	N. 14°39' W.,	219.62 ft.
4.	N. 71°15' W.,	160.42 ft.
5.	S. 38°19' W.,	103.09 ft.
6.	S. 19°31' W.,	192.69 ft.
7.	S. 11°17' E.,	122.93 ft.
8.	S. 1°30' W.,	44.77 ft.

TRACT A BLOCK 2 MEANDERS
Along a gradual sloping gravel shore at the line of mean high tide.

1.	N. 12°29' E.,	91.45 ft.
2.	N. 15°02' E.,	166.35 ft.



CURVE TABLE

Curve	Radius	Arc Length	Chord Bearing	Long Chord
①	1211.92	256.29	S. 39°34' E.	255.81
②	1079.92	138.20	S. 41°57' E.	138.11

TRACT A MONUMENTS AND ACCESSORIES

All bearing trees are marked X BT

MONUMENT	DEPTH IN INCHES	TREE DIAMETER IN INCHES & TYPE	BEARINGS IN DEGREES				DISTANCE IN FEET
			NE	SE	SW	NW	
MC1 B1	23	10 CEDAR	72 1/4				28.2
		17 CEDAR	36 3/4				34.1
MC2 B1	23	16 CEDAR		86 1/2			46.1
		7 CEDAR			44		36.0
C2 B2	26	7 CEDAR				62 1/2	61.8
		17 SPRUCE	23 1/2				26.1
C3 B2	24	8 HEMLOCK		38			13.8
		9 HEMLOCK			22 3/4		17.7
MC4 B2	23	6 SPRUCE	57 1/4				30.4
		14 SPRUCE	72 1/2				17.3

TRACT B MONUMENT ACCESSORY INFORMATION

All bearing trees are marked X BT
Accessory magnets are in color coded plastic cases and buried in the ground.

MONUMENT	DEPTH IN INCHES	TREE DIAMETER IN INCHES & TYPE	MAGNET COLOR & DEPTH IN INCHES	BEARINGS IN DEGREES				DISTANCE IN FEET
				NE	SE	SW	NW	
C1B1B2B3	12	17 SPRUCE					2	21.6
		15 HEMLOCK		66 1/4				73.2
C2B1C2B3	26	15 SPRUCE		52 1/2				12.9
		7 SPRUCE			51 1/2			36.8
C3B1B2	27	34 CEDAR		89 1/2				28.6
		20 SPRUCE			33 1/2			5.0
C4B1C2B2	26		SILVER 12	45				10.0
			ORANGE 12				45	10.0
C3B3	24	6 HEMLOCK		74 1/4				38.6
		16 HEMLOCK			53 3/4			94.7

- LEGEND**
- Stainless steel post, 2 1/2 ins. diam., 28 ins. long, with brass cap mkd. SSI ANCSA 14C 1993 and with the appropriate cor. Nos., tract letter, block Nos., tract lines, and right-of-way descriptors. Meander corners have additional marks MC. Refer to Monument and Accessories table for accessories established at each corner. Bury a magnet in a white plastic case at the base of each stainless steel post as a memorial.
 - ⊕ Bureau of Land Management monument recovered this survey.
 - ⊕ Recovered alum. post, 3 ins. diam., firmly set, projecting 6 ins. above the ground, with alum. cap mkd. 6992-LS SS 1992, and with the appropriate lot and block Nos., lot lines, and right-of-way descriptors.

DMK

Original Plat transmitted to Ketchikan Recording District and recorded on Sept. 12, 1995 as Plat #95-57.

DUPLICATE ORIGINAL

Sheet 3 of 14 Sheets

ALASKA NATIVE CLAIMS SETTLEMENT ACT
(ANCSA) SECTION 14 (C) TRACTS A THROUGH M
P.L. 92-203 (85 STAT. 688, 702, 703)

SHAAN-SEET, INCORPORATED

AT
CRAIG, ALASKA

REFERENCE SHOULD BE MADE
TO
SHEET No. 1
FOR SURVEY INFORMATION

LEGEND

- Stainless steel post, 2 1/2 ins. diam., 28 ins. long, with brass cap mkd. SSI ANCSA 14C 1993 and with the appropriate cor. Nos., tract letter, block Nos., tract lines, and right-of-way descriptors. Meander corners have additional marks MC. Witness corners have additional marks WC and an arrow pointing to the true corner. Refer to Monument and Accessories table for accessories established at each corner. Bury a magnet in a white plastic case at the base of each stainless steel post as a memorial.
- ☒ A wooden post, 4 x 4 ins., firmly set, projecting 10 ins. above the ground, with a 2 ins. diam. brass disc affixed to the top, mkd. ALASKA DEPT OF HWY ROW 1976. No record of these monuments was found.
- Bureau of Land Management or General Land Office monument found this survey.

NOTE

The true point for cor. No. 3 tract M falls in a dry creek bed unsuitable for monumentation.
The true point for cor. No. 2 tract C falls on a large stump unsuitable for monumentation.
The off-line witness cor. to meander cor. No. 1 tract D, was set on the right-of-way line of the Craig-Klawock Highway.
See sheet No. 2 for information pertaining to the recovery of the Craig-Klawock Highway right-of-way.

CURVE TABLE

Curve	Radius	Arc Length	Chord Bearing	Long Chord
③	1763.14	82.08	N. 23°02' W.	82.07
④	1703.14	315.54	N. 16°23' W.	315.09
⑤	1557.14	52.96	N. 14°20' W.	52.96
⑥	1571.14	1227.22	N. 9°01' E.	1196.26
⑦	1703.14	200.30	N. 34°58' E.	200.18

TRACT D MONUMENTS AND ACCESSORIES

All bearing trees are marked X BT.
Accessory magnets are in color coded plastic cases and buried in the ground

MONUMENT	DEPTH IN INCHES	TREE DIAMETER IN INCHES & TYPE	MAGNET COLOR & DEPTH IN INCHES	BEARINGS IN DEGREES				DISTANCE IN FEET
				NE	SE	SW	NW	
WCM1	24	12 HEMLOCK				10 1/2		52.5
		6 SPRUCE				73 1/2		28.6
C2	27		SILVER 12	45				10.0
			ORANGE 12				45	10.0
MC3	25	21 CEDAR		61				81.6
		13 HEMLOCK				5 1/2		63.5

TRACT D MEANDERS

Along the beach at the line of mean high tide.

1.	N. 37°32' E.	76.86 ft.
2.	N. 14°52' E.	143.63 ft.
3.	N. 31°19' E.	129.15 ft.
4.	N. 9°52' E.	175.20 ft.
5.	N. 4°59' W.	64.98 ft.
6.	N. 14°16' E.	177.32 ft.
7.	N. 15°14' E.	209.96 ft.
8.	S. 85°30' E.	92.48 ft.
9.	N. 68°49' E.	106.91 ft.
10.	N. 54°37' E.	70.30 ft.

At end of course, begin along the east bank of Crab Creek.

TRACT C MONUMENTS AND ACCESSORIES

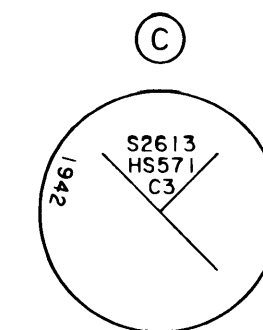
All bearing trees are marked X BT.
Accessory magnets are in color coded plastic cases and buried in the ground

MONUMENT	DEPTH IN INCHES	TREE DIAMETER IN INCHES & TYPE	MAGNET COLOR & DEPTH IN INCHES	BEARINGS IN DEGREES				DISTANCE IN FEET
				NE	SE	SW	NW	
C1	25	6 HEMLOCK			84 1/2			38.6
		8 SPRUCE					33	4.3
WC2	25		PINK 12	45				10.0
			BLUE 12		45			10.0
C3	27		ORANGE 12			45		10.0
			BLUE 12		45			10.0
C4	25		SILVER 12	45				10.0
			PINK 12		45			10.0

TRACT M MONUMENTS AND ACCESSORIES

All bearing trees are marked X BT.

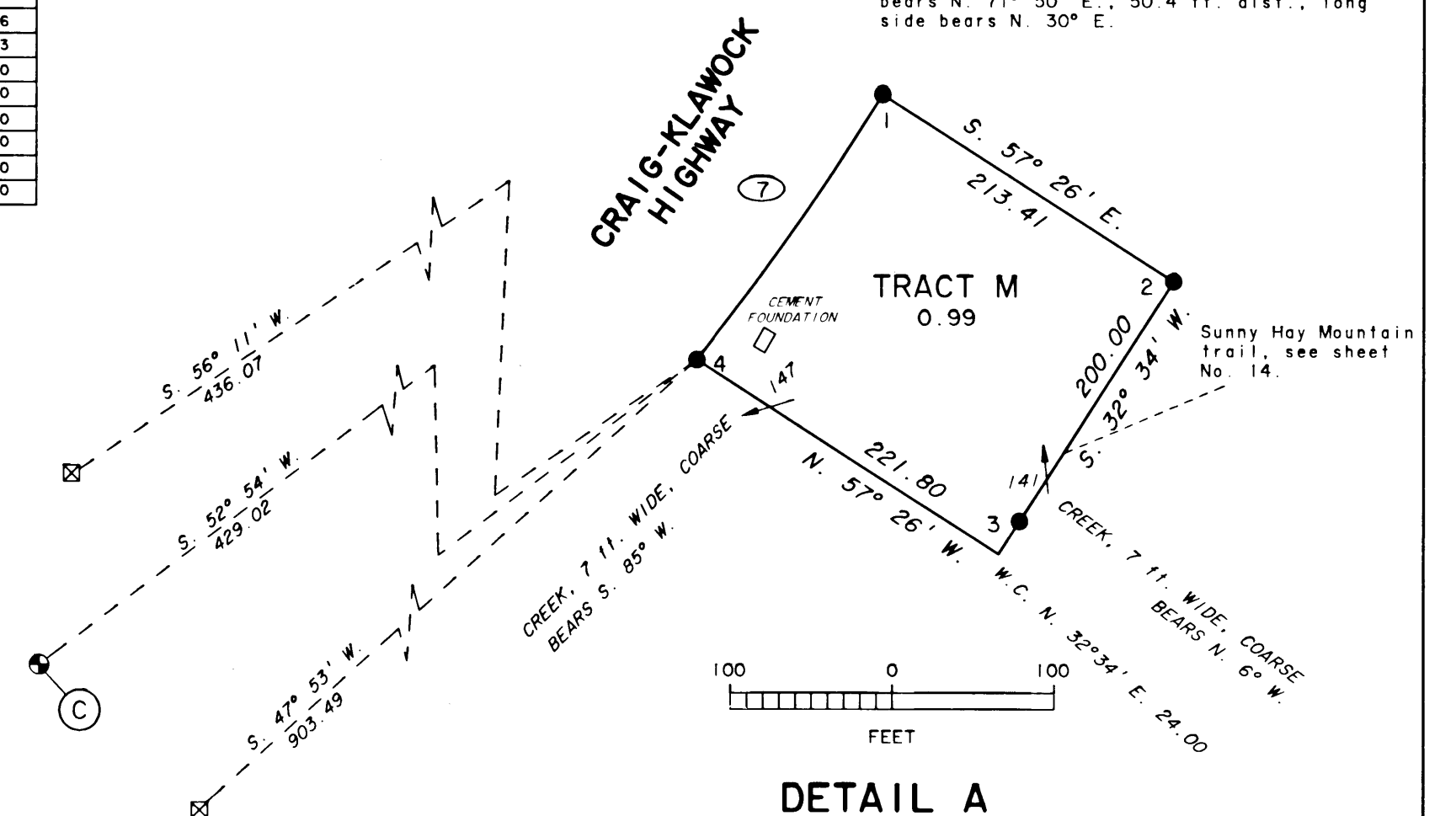
MONUMENT	DEPTH IN INCHES	TREE DIAMETER IN INCHES & TYPE	BEARINGS IN DEGREES				DISTANCE IN FEET
			NE	SE	SW	NW	
C1	27	6 SPRUCE	71 1/2				18.0
		8 SPRUCE		44			32.8
C2	27	4 SPRUCE		25 1/4			26.4
		5 HEMLOCK			65 1/4		46.5
WC3	26	4 SPRUCE	67 3/4				33.0
		10 SPRUCE			77		44.0
C4	26	5 SPRUCE		61 1/4			37.7
		8 SPRUCE		4 1/4			16.6



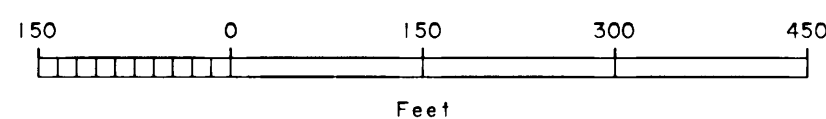
Recovered a General Land Office survey monument, a 1 in. diam. post, firmly set, projecting 8 ins. above the ground with a 2 1/2 ins. diam. brass cap mkd. as shown.
No accessories were found.

IMPROVEMENTS

From cor. 4 tract M, the most westerly corner of a 12' x 20' cement foundation bears N. 71° 50' E., 50.4 ft. dist., long side bears N. 30° E.



DETAIL A



Original Plat transmitted to Ketchikan Recording District and recorded on Sept. 12, 1995 as Plat #95-57.

DUPLICATE ORIGINAL

ALASKA NATIVE CLAIMS SETTLEMENT ACT
(ANCSA) SECTION 14 (C) TRACTS A THROUGH M
P.L. 92-203 (85 STAT. 688, 702, 703)

SHAAN-SEET, INCORPORATED
AT
CRAIG, ALASKA

REFERENCE SHOULD BE MADE
TO
SHEET No. 1
FOR SURVEY INFORMATION

HISTORY OF SURVEYS

Portions of the North and East boundaries of Township 74 South, Range 81 East, Copper River Meridian, Alaska, were surveyed by Malcom A. Menzies, Alaska Registered Land Surveyor No. 1410, in 1976 and 1977.

The exterior boundary and a portion of the subdivisional lines of Section 11, Township 74 South, Range 82 East, Copper River Meridian, were surveyed in 1993 by Timothy A. Quinay, Cadastral Surveyor, under Special Instructions for Group No. 598, Alaska.

U.S. Survey No. 3857 was surveyed by Walter W. Cooley, Supervisory Cadastral Surveyor, in 1961.

Alaska State Land Survey No. 74-153, subdividing U.S. Survey No. 3857, Lot 2, was compiled by the State of Alaska, Department of Natural Resources, Division of Lands, in 1974.

An unrecorded resurvey of Lot 2B, U.S. Survey No. 3857, was executed in 1985 by Noel F. Stragier, Alaska Registered Land Surveyor No. 3337, for the City of Craig, Alaska.

U.S. Survey Nos. 2611 and 2613 were surveyed by F.W. Williamson, Associate Cadastral Engineer, G.L.O., in 1942.

Tract A, Crab Cove Heights was surveyed in 1992 by Paul D. Whipple, Alaska Registered Land Surveyor No. 6992, and recorded in the Ketchikan Recording District, Plat No. 93-7, on March 23, 1993.

Crab Cove Heights Subdivision was surveyed in 1993 by Paul D. Whipple, Alaska Registered Land Surveyor No. 6992, and recorded in the Ketchikan Recording District, Plat No. 94-14, on April 12, 1994.

Port St. Nicholas Subdivision was surveyed in 1983 by Douglas G. Minton, Alaska Registered Land Surveyor No. 5781, and recorded in the Ketchikan Recording District, Plat No. 83-65, on November 17, 1983.

Lots 4A and 5A, Port St. Nicholas Subdivision, a re-subdivision of lots 4 and 5, Port St. Nicholas Subdivision, was surveyed in 1992 by Craig L. Templin, Alaska Registered Land Surveyor No. 3491, and recorded in the Ketchikan Recording District, Plat No. 92-40, on September 11, 1992.

Craig WTP Subdivision, a subdivision of Lots 2 and 3, Port St. Nicholas Subdivision, was surveyed in 1991 by Rick G. Braun, Alaska Registered Land Surveyor No. 5781, and recorded in the Ketchikan Recording District, Plat No. 91-35, on July 8, 1991.

An unrecorded resurvey of Lot 10, Port St. Nicholas Subdivision, was executed in 1992 by Gregory G. Scheff, Alaska Registered Land Surveyor No. 6700, for the City of Craig, Alaska.

The Craig-Klawock Highway was surveyed by the State of Alaska, Department of Highways project S-0924 (5) in 1971 and recorded in the Ketchikan Recording District, Plat No. 80-2, on January 9, 1980.

The Craig Cemetery Site was surveyed by George C. Sawyer on March 28, 1939, for the U.S. Forest Service. This survey is described in Executive Order No. 8779, filed in the Federal Register document No. 41-4207 on June 12, 1941. An unrecorded plat of the reestablishment of the Craig Cemetery site was done by Earl L. Fosse, Alaska Registered Land Surveyor No. 3408, in 1982 and is on file with the City of Craig, Alaska.

NOTES

The Cemetery Island Road consists of a 60 ft. wide right-of-way, 30 ft. on either side of the platted centerline. This road was surveyed along the apparent centerline of the existing roadbed and monumented accordingly.

The witness corner to meander corner No. 16, Lot 2, U.S. Survey No. 3857, was re-established from the recovered original northwest bearing tree. The original witness corner to meander corner No. 16 and the northeast bearing tree are obliterated. The new witness corner to meander corner No. 16 was established and the original northwest bearing tree was used as an accessory.

The recovered witness corner to corner No. 17, Lot 2, U.S. Survey No. 3857, identical to the witness corner to corner No. 1, H.S. 457, U.S. Survey No. 2611, both meander corners, was established by Noel F. Stragier, Alaska Registered Land Surveyor No. 3337, for an unrecorded resurvey of Lot 2B, U.S. Survey No. 3857 in 1985. The recovered witness corner was a 5/8 in. rebar without an aluminum cap, firmly set, 6 ins. below ground, at a witness distance of 40 ft. This witness corner is harmoniously related to other existing original corners and is accepted as the best available evidence of the original corner position. This witness corner was re-monumented with a stainless steel post, 2 1/2 ins. diam., 28 ins. long. Refer to Monument and Accessory Table.

U.S. Survey No. 2611
H.S. 457

H.S. 591

A.S.L.S. No. 74-153
U.S. SURVEY No. 3857
Lot 2

SHELTER COVE

PORT BAGIAL

LEGEND

- Stainless steel post, 2 1/2 ins. diam., 28 ins. long, with brass cap mkd. SS1 ANCSA 14C 1993 and with the appropriate cor. Nos., tract letter, tract lines, and curve designations. Witness corners have additional marks WC and an arrow pointing to the true corner. Refer to Monument and Accessories table for accessories established at each corner. Bury a magnet in a white plastic case at the base of each stainless steel post as a memorial.
- ⊕ Bureau of Land Management or General Land Office monument found this survey.
- Recovered a 5/8 in. diam rebar, firmly set, projecting 6 ins. above the ground, with alum cap mkd. PROP CORNER HS 457 ROW 3337-S.

CURVE DATA

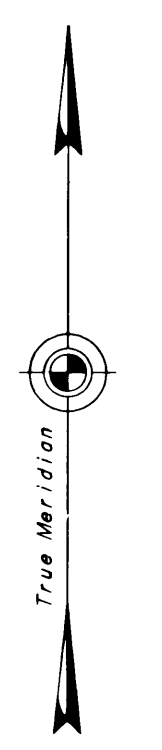
Curve	Radius	Arc Length	Chord Bearing	Long Chord
①	1700.00	457.45	S. 22°39' W.	456.07
②	398.00	240.36	S. 13°04' W.	236.72

CEMETERY ISLAND ROAD MONUMENTS AND ACCESSORIES

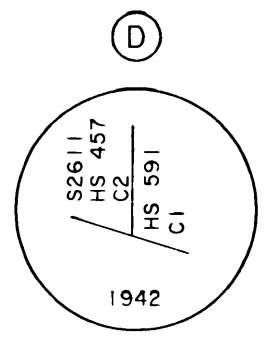
All bearing trees are marked X BT.
Accessory magnets are in color coded plastic cases and buried in the ground

MONUMENT	DEPTH IN INCHES	TREE DIAMETER IN INCHES & TYPE	MAGNET COLOR & DEPTH IN INCHES	BEARINGS IN DEGREES				DISTANCE IN FEET
				NE	SE	SW	NW	
INTERSEC. CEM. & G	40		PINK 12		45			15.0
PT 1	40		NO ACCESSORIES			45		15.0
PC 2	40		NO ACCESSORIES					
PT 2	40		NO ACCESSORIES					
INTERSEC. USS 3857	40		PINK 12		45			15.0
WCMC 16 S3857	40	9 SPRUCE	BLUE 12			45		15.0
		48 SPRUCE		48	1/2			73.4
WCMC 17 S3857	40	UTILITY SUPPORT POLE W/6" SPIKE DRIVEN 5 1/2" INTO NORTH FACE MKD 93		85 1/2				42.5
		UTILITY SUPPORT POLE W/6" SPIKE DRIVEN 5 1/2" INTO SOUTH FACE MKD 93			55 1/2			13.3

TRACT G
SEE SHEET NO. 5



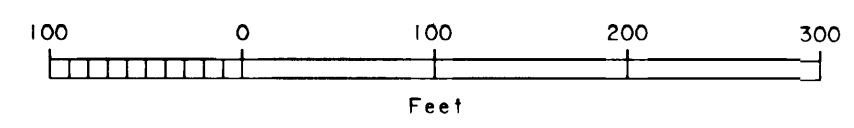
Observed Magnetic Declination 25 1/2° E.



Recovered an iron post, 1 in. diam., firmly set, projecting 2 ins. above the ground, with brass cap mkd. as shown, from which the original accessories

A spruce 18 ins. diam., bears N. 43 1/4° E., 32.3 ft. dist. with a fully healed blaze.

A spruce 17 ins. diam., bears N. 2 1/2° W., 34.0 ft. dist. with visible scribe marks on a mostly healed blaze.

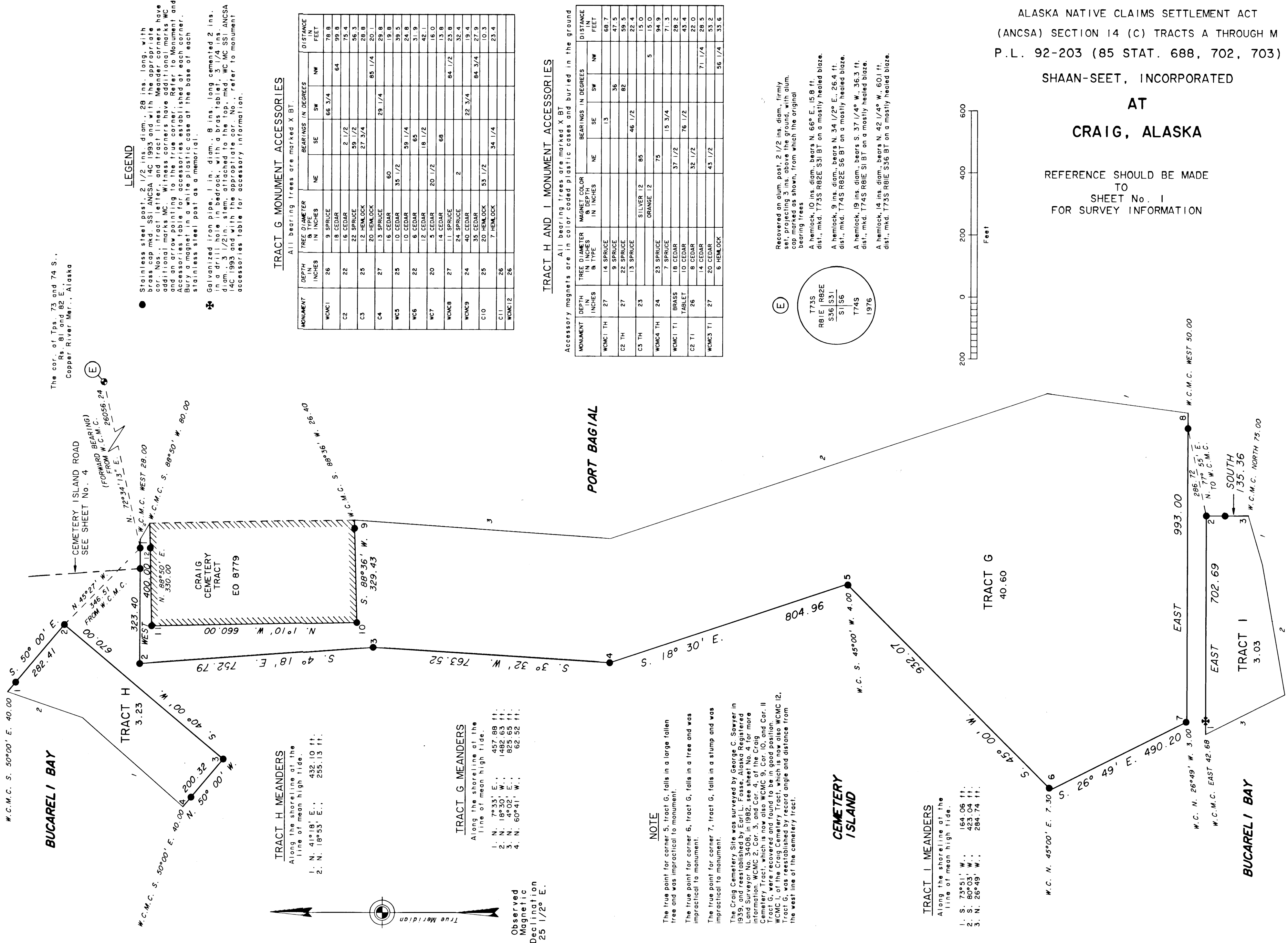
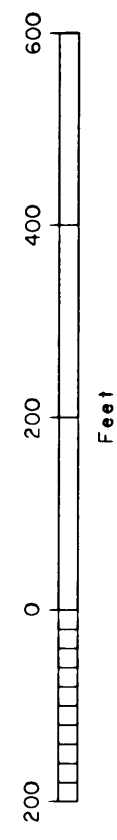


Original Plat transmitted to Ketchikan Recording District and recorded on Sept. 12, 1995 as Plat #95-57.

ALASKA NATIVE CLAIMS SETTLEMENT ACT
(ANCSA) SECTION 14 (C) TRACTS A THROUGH M
P.L. 92-203 (85 STAT. 688, 702, 703)

SHAAN-SEET, INCORPORATED
AT
CRAIG, ALASKA

REFERENCE SHOULD BE MADE
TO
SHEET No. 1
FOR SURVEY INFORMATION



LEGEND

- Stainless steel post, 2 1/2 ins. diam., 28 ins. long, with brass cap mkd. SSI ANCSA 14C 1993 and with the appropriate cor. Nos., tract letter, and tract lines. Meander corners have additional marks MC. Witness corners have additional marks WC and an arrow pointing to the true corner. Refer to Monument and Accessories table for accessories established at each corner. Refer to the appropriate case at the base of each corner.
- ⊙ Galvanized iron pipe, 1 in. diam., 8 ins. long cemented 2 ins. in a drill hole in bedrock, with a brass tablet, 3 1/4 ins. diam., 3 1/2 in. stem, attached to the top, mkd. WC MC SSI ANCSA 14C 1993 and with the appropriate cor. No., refer to monument accessories table for accessory information.

TRACT G MONUMENT ACCESSORIES

All bearing trees are marked X BT.

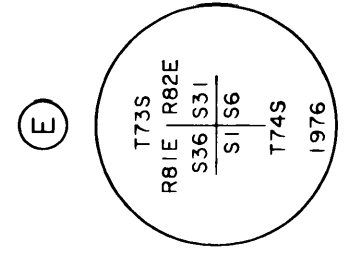
MONUMENT	DEPTH IN INCHES	TREE DIAMETER IN INCHES	BEARINGS IN DEGREES				DISTANCE IN FEET
			NE	SE	SW	NW	
WCMC1	26	9 SPRUCE	66 3/4				78.8
C2	22	18 CEDAR	2 1/2				64
C3	25	22 SPRUCE	59 1/2				75.4
C4	25	12 HEMLOCK	27 3/4				56.3
C4	27	20 HEMLOCK	29 1/4				28.8
C4	27	13 SPRUCE	29 1/4				20.1
WC3	25	10 CEDAR	35 1/2				19.8
WC6	22	10 CEDAR	59 1/4				39.5
WC7	20	6 CEDAR	65				24.8
WC7	20	5 CEDAR	18 1/2				31.9
WCMC8	27	11 CEDAR	20 1/2				42.1
WCMC8	27	11 CEDAR	68				15.0
WCMC9	24	40 CEDAR	2				13.8
C10	25	35 CEDAR	53 1/2				32.4
C10	25	29 HEMLOCK	53 1/2				19.4
C11	26	7 HEMLOCK	34 1/4				27.9
WCMC12	26	6 HEMLOCK	43 1/2				10.3
WCMC12	26	6 HEMLOCK	56 1/4				23.4

TRACT H AND I MONUMENT ACCESSORIES

All bearing trees are marked X BT.

Accessory magnets are in color, coded plastic cases and buried in the ground

MONUMENT	DEPTH IN INCHES	TREE DIAMETER IN INCHES	MAGNET COLOR & DEPTH IN INCHES	BEARINGS IN DEGREES				DISTANCE IN FEET
				NE	SE	SW	NW	
WCMC1 TH	27	14 SPRUCE		13				66.7
C2 TH	27	9 SPRUCE			36			47.5
C3 TH	23	13 SPRUCE		46 1/2				59.5
WCMC4 TH	24	23 SPRUCE	SILVER 12	85				22.4
WCMC4 TH	24	7 SPRUCE	ORANGE 12	75				15.0
WCMC1 T1	BRASS	18 CEDAR		37 1/2				94.9
C2 T1	26	8 CEDAR		76 1/2				71.3
WCMC3 T1	27	14 CEDAR		32 1/2				28.2
WCMC3 T1	27	20 CEDAR		43 1/2				43.4
WCMC3 T1	27	6 HEMLOCK		43 1/2				22.0
WCMC3 T1	27	6 HEMLOCK		43 1/2				53.2
WCMC3 T1	27	6 HEMLOCK		43 1/2				33.6



Recovered on alum. post, 2 1/2 ins. diam., firmly set, projecting 3 ins. above the ground, with alum. cap marked as shown, from which the original bearing trees

A hemlock, 10 ins. diam., bears N. 66° E., 15.8 ft. dist., mkd. T735 R82E S31 BT on a mostly healed blaze.

A hemlock, 9 ins. diam., bears N. 34 1/2° E., 26.4 ft. dist., mkd. T745 R82E S6 BT on a mostly healed blaze.

A hemlock, 19 ins. diam., bears S. 37 1/4° W., 36.3 ft. dist., mkd. T745 R81E S1 BT on a mostly healed blaze.

A hemlock, 14 ins. diam., bears N. 42 1/4° W., 60.1 ft. dist., mkd. T735 R81E S36 BT on a mostly healed blaze.

NOTE

- The true point for corner 5, tract G, falls in a large fallen tree and was impractical to monument.
- The true point for corner 6, tract G, falls in a tree and was impractical to monument.
- The true point for corner 7, tract G, falls in a stump and was impractical to monument.

TRACT G MEANDERS

- Along the shoreline at the line of mean high tide.
- N. 7°33' E., 457.89 ft.
 - N. 18°30' W., 1482.63 ft.
 - N. 6°03' W., 862.52 ft.
 - N. 60°41' W., 62.52 ft.

TRACT H MEANDERS

- Along the shoreline at the line of mean high tide.
- N. 41°18' E., 432.10 ft.
 - N. 18°53' E., 255.13 ft.

TRACT I MEANDERS

- Along the shoreline at the line of mean high tide.
- S. 73°51' W., 164.06 ft.
 - S. 80°03' W., 423.04 ft.
 - N. 26°49' W., 284.74 ft.

Original Plat transmitted to Ketchikan Recording District and recorded on Sept. 12, 1995 as Plat # 95-57.

DUPLICATE ORIGINAL

Sheet 6 of 14 Sheets

ALASKA NATIVE CLAIMS SETTLEMENT ACT
(ANCSA) SECTION 14 (C) TRACTS A THROUGH M
P.L. 92-203 (85 STAT. 688, 702, 703)

SHAAN-SEET, INCORPORATED
AT
CRAIG, ALASKA

REFERENCE SHOULD BE MADE
TO
SHEET No. 1
FOR SURVEY INFORMATION

CURVE DATA

Curve	Radius	Arc Length	Chord Bearing	Long Chord
(2L)	2030.00	151.24	N. 12°07' E.	151.21
(3L)	570.00	302.48	N. 0°57' W.	298.94
(7R)	3625.00	540.39	S. 25°31' E.	539.90

TRACT F MONUMENTS AND ACCESSORIES

All bearing trees are marked X BT, all bearing objects are marked X BO. Accessory magnets are in color coded plastic cases and buried in the ground.

MONUMENT	DEPTH IN INCHES	TREE/ROCK DESCRIPTION	MAGNET COLOR IN INCHES	BEARINGS IN DEGREES				DISTANCE IN FEET
				NE	SE	SW	NW	
MCI	16"	HEMLOCK		75 3/4			11 1/4	59.0
C2	27	7" CEDAR	SILVER 12	45			45	28.3
C3		BRASS TABLET	ORANGE 12					7.0
		BRASS TABLET						10.0
		BRASS TABLET						11.0
		BRASS TABLET						13.6
		BRASS TABLET						6.8
		BRASS TABLET						32.0

NOTE

The Port St. Nicholas Road consists of a 60 ft. wide right-of-way, 30 ft. on either side of the platted centerline. This road was surveyed along the apparent centerline of the existing roadbed and monumented accordingly. Refer to sheet No. 10 for centerline monument information.

From Cor. 1, Blk. 1, Tr. E, the monument for PRC 2-3, Port St. Nicholas Rd. bears S. 29° 25' W., 193.06 ft. dist.

From Cor. 3, Tr. F, the monument for PT 7, Port St. Nicholas Rd. bears N. 24° 50' W., 347.56 ft. dist.

The true point for Cor. 2, Blk. 1, Tr. E, falls in a large blown down tree and was impractical to monument.

TRACT E MONUMENTS AND ACCESSORIES

All bearing trees are marked X BT, all bearing objects are marked X BO. Accessory magnets are in color coded plastic cases and buried in the ground.

MONUMENT	DEPTH IN INCHES	TREE/ROCK DESCRIPTION	MAGNET COLOR IN INCHES	BEARINGS IN DEGREES				DISTANCE IN FEET
				NE	SE	SW	NW	
C1 BLK 1	26	16" SPRUCE		57 1/4			57.8	
WC2 BLK 1	26	12" SPRUCE	BLUE 12			45	90.7	
C3 BLK 1		BRASS TABLET	ORANGE 12				5.0	
C4 BLK 1	26	BRASS TABLET					45	
C1 BLK 2	27	4" HEMLOCK		60 1/2			25.8	
C2 BLK 2	27	4" HEMLOCK		45			7.0	
C3 BLK 2	26	4" HEMLOCK		51 1/4			11.2	
							23 1/2	
							10.0	
							45	
							10.0	
							10.0	

TRACT F MEANDERS

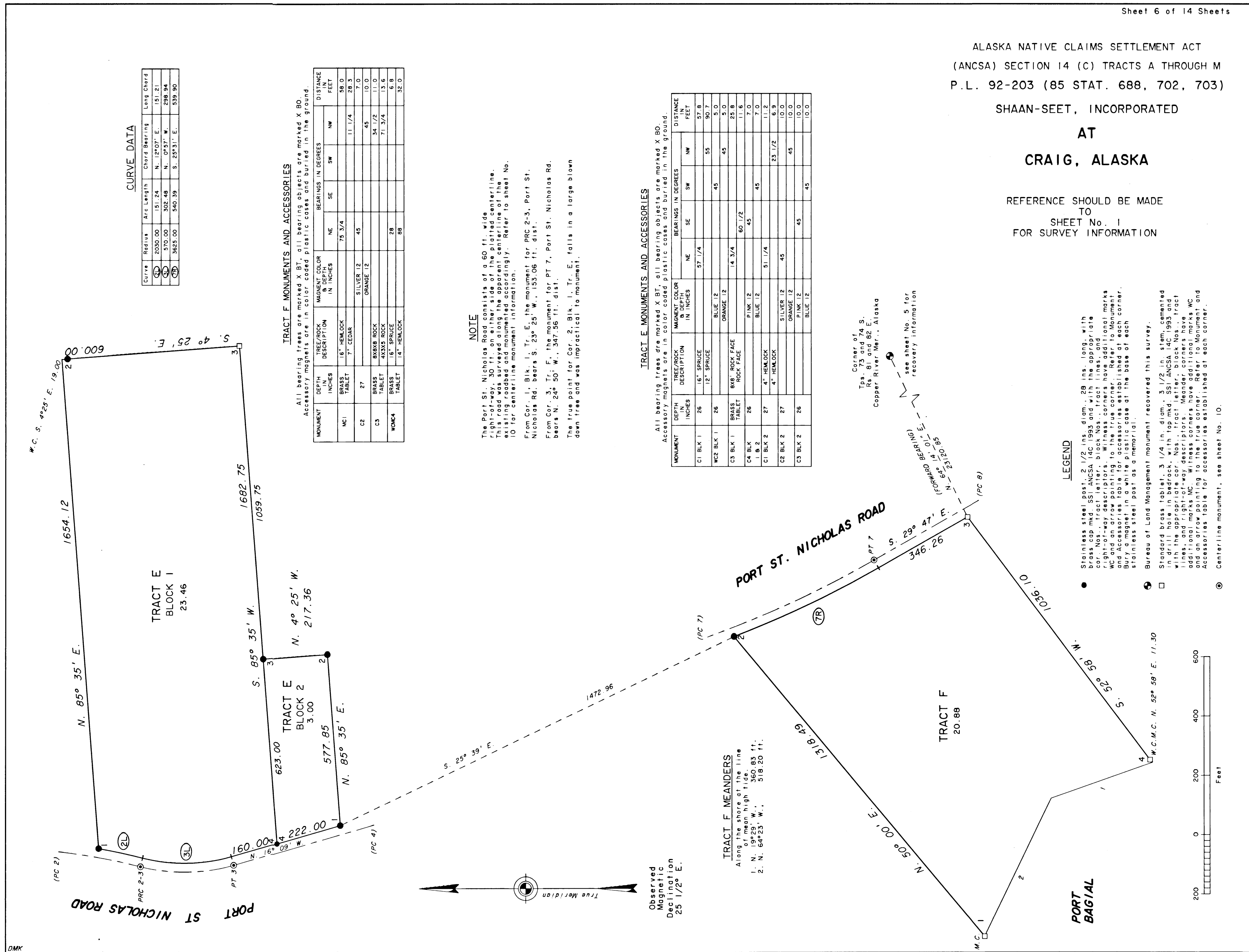
Along the shore at the line of mean high tide.
1. N. 19° 29' W., 360.85 ft.
2. N. 64° 23' W., 518.20 ft.

Corner of
Tps. 73 and 74 S.
Rs. 81 and 82 E.
Copper River Mer., Alaska

see sheet No. 5 for
recovery information

LEGEND

- Stainless steel post, 2 1/2 ins. diam., 28 ins. long, with base cap, SSI/ANCSA 14C 1993 and with the appropriate color Nos. Tract letter, block Nos. tract lines and right-of-way descriptors. Witness corners have additional marks WC and an arrow pointing to the true corner. Refer to Monument and Accessories table for accessories established at each corner. Bury a magnet in a white plastic case at the base of each stainless steel post as a memorial.
- ⊕ Bureau of Land Management monument recovered this survey.
- Standard brass tablet, 3 1/4 in. diam., 3 1/2 in. stem, cemented in drill hole in bedrock, with top mkd. SSI/ANCSA 14C 1993 and with the appropriate cor. Nos., tract letter, block Nos., tract lines, and right-of-way descriptors. Meander corners have additional marks MC. Witness corners have additional marks WC and an arrow pointing to the true corner. Refer to Monument and Accessories table for accessories established at each corner.
- ⊙ Centerline monument, see sheet No. 10.



DMK

Original Plat transmitted to Ketchikan Recording District and recorded on Sept. 12, 1995 as Plat #95-57.

DUPLICATE ORIGINAL

Sheet 7 of 14 Sheets

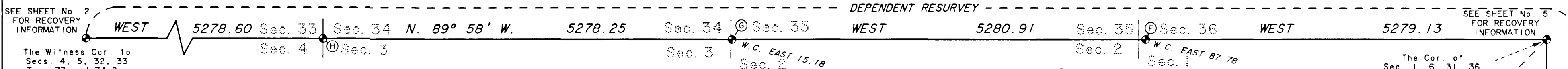
ALASKA NATIVE CLAIMS SETTLEMENT ACT
(ANCSA) SECTION 14 (C) TRACTS A THROUGH M
P.L. 92-203 (85 STAT. 688, 702, 703)

SHAAN-SEET, INCORPORATED
AT
CRAIG, ALASKA

AND
THE DEPENDENT RESURVEY OF PORTIONS
OF THE NORTH AND EAST BOUNDARIES
AND SUBDIVISION OF PORTIONS OF
TOWNSHIP 74 SOUTH, RANGE 81 EAST
COPPER RIVER MERIDIAN

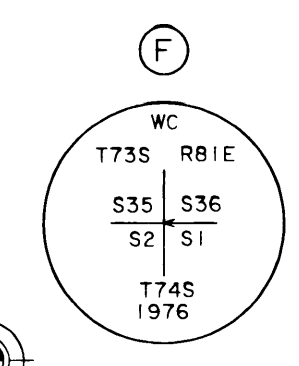
REFERENCE SHOULD BE MADE
TO
SHEET No. 1
FOR SURVEY INFORMATION

MONUMENTS AND ACCESSORIES																	
All bearing trees are marked X BT. all bearing objects are marked X BO. Accessory magnets are in color coded plastic cases and buried in the ground.																	
MONUMENT	DEPTH IN INCHES	TREE/ROCK DESCRIPTION	MAGNET COLOR & DEPTH IN INCHES	BEARINGS IN DEGREES				DISTANCE IN FEET	MONUMENT	DEPTH IN INCHES	TREE/ROCK DESCRIPTION	MAGNET COLOR & DEPTH IN INCHES	BEARINGS IN DEGREES				DISTANCE IN FEET
				NE	SE	SW	NW						NE	SE	SW	NW	
CN 1/16 S11	20	3" DIAM ROCK, 18" ABV GROUND					56 1/2	C 1/4 S10		6X10" ROCK, 6" ABOVE GROUND					6	9.2	
		3X4" ROCK, 2" ABV GROUND					47 1/4			20X20" ROCK, 18" ABOVE GROUND				77	7.6		
N 1/16 S11 S12	19	10" SUBALPINE SPRUCE				26 1/4	24.25	CW 1/16 S10	13	5X5" ROCK, 3" ABOVE GROUND				81	89.75		
		14" SUBALPINE SPRUCE				85 1/4	61.75			10X10" ROCK, 5" ABOVE GROUND				49 1/4	66.75		
S1 S2 S11 S12	18	15" DIAM ROCK, 4" ABOVE GROUND				43 3/4	75.75	1/4 S9 S10		12" DIAM SPRUCE				70 1/2	24.5		
		3" DIAM ROCK, 2" ABOVE GROUND				86 1/2	75.0			11" DIAM SPRUCE				39 1/2	21.0		
1/4 S2 S11	15		SILVER 12	NORTH			6.6	S3 S4 S9 S10	25	13" DIAM HEMLOCK				85 3/4	27.2		
			BLUE 12	EAST			6.6			8" DIAM HEMLOCK				9	14.1		
			ORANGE 12	SOUTH			6.6	1/4 S11 S12	25	8" DIAM HEMLOCK				12	35.7		
			PINK 12	WEST			6.6			8" DIAM HEMLOCK					9.2		
S2 S3 S10 S11	18	13" D HEMLOCK				42 1/2	33.6	N 1/16 S10 S11	18	7" DIAM HEMLOCK				62	15.7		
		10" D HEMLOCK					26.5			16" DIAM HEMLOCK					76.3		
1/4 S10 S11	26	11" D HEMLOCK				86	16.4	WC TO NW 1/16 S10	26	8x10" ROCK 4" ABOVE GROUND				64	70.5		
		15" D HEMLOCK					58.4			15x20" ROCK 3" ABOVE GROUND				26	41.4		
WC TO E 1/16 S3 S10		12" D CEDAR					66.4										
		12" D CEDAR					78.3										
WC TO NE 1/16 S10	16	LARGE ROCK OUTCROP				17	44.7										
		LARGE ROCK OUTCROP					38.0										



LEGEND

- Stainless steel post, 2 1/2 ins. diam., 28 ins. long, with brass cap mkd. SSI ANCSA 14C 1993 and with the appropriate Public Land Survey System markings. Witness corners have additional marks WC. Refer to Monument and Accessories table for accessories established at each corner. All monuments are encircled by a collar of stone, 2 1/2 ft. to 3 1/2 ft. diam., to top of brass cap. Bury a magnet in a white plastic case at the base of each stainless steel post as a memorial.
- ⊙ Bureau of Land Management monument recovered this survey.
- ⊕ Galvanized iron pipe, 1 in. diam., 8 ins. long, cemented 2 ins. in a drill hole in bedrock, with a brass tablet, 3 1/4 ins. diam., 3 1/2 in. stem, attached to the top, mkd. WC SSI ANCSA 14C 1993 and with the appropriate Public Land Survey System markings. Refer to Monument and Accessories table for accessories established at each corner.
- Brass tablet, 3 1/4 ins. diam., 3 1/2 in. stem cemented in a drill hole in bedrock, with top mkd. SSI ANCSA 14C 1993 and with the appropriate Public Land Survey System markings. Refer to Monument and Accessories table for accessories established at each corner.



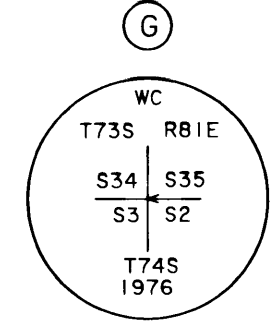
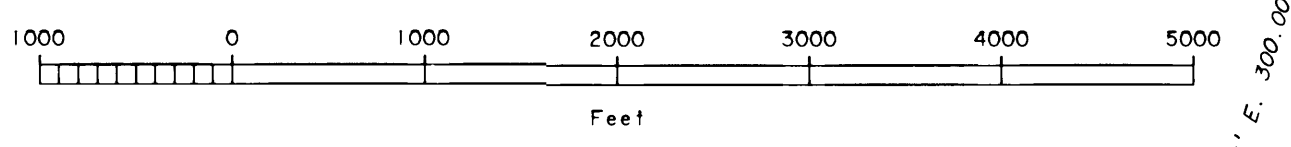
Recovered an alum. post, 2 1/2 ins. diam., firmly set, projecting 6 ins. above the ground, with alum. cap marked as shown, from which the original bearing trees

A hemlock stump, 24 ins. diam., bears N. 27 1/2° E., 31.68 ft. dist., with no visible markings.

A hemlock, 40 ins. diam., bears S. 46° E., 48.8 ft. dist., mkd. X BT on a partially healed blaze.

A spruce stump, 60 ins. diam., bears S. 15 1/2° W., 18.5 ft. dist., mkd with a healed blaze.

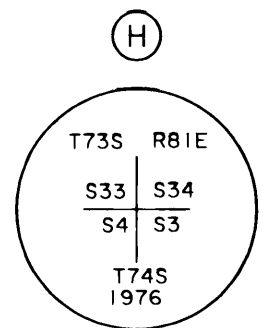
A hemlock stump, 37 ins. diam., bears N. 30° W., 23.8 ft. dist., mkd. BT on a partially healed blaze.



Recovered an alum. post, 2 1/2 ins. diam., firmly set, projecting 3 ins. above the ground, with alum. cap marked as shown, from which the original bearing trees

A hemlock, 12 ins. diam., bears S. 30° E., 20.5 ft. dist., mkd. X BT on a partially healed blaze.

A spruce, 40 ins. diam., bears S. 43° W., 22.4 ft. dist., mkd. X BT on a partially healed blaze.



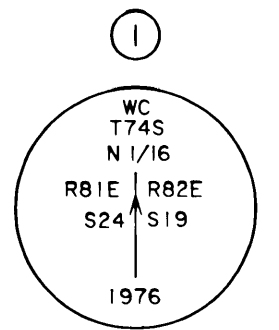
Recovered an alum. post, 2 1/2 ins. diam., firmly set, projecting 8 ins. above the ground, with alum. cap marked as shown, from which the original bearing trees

A spruce, 12 ins. diam., bears N. 34 1/4° E., 25.7 ft. dist., mkd. T73S R81E S34 BT on a partially healed blaze.

A hemlock stump, 19 ins. diam., bears S. 19 1/4° E., 21.1 ft. dist., mkd. BT on a partially healed blaze.

A hemlock stump, 24 ins. diam., bears S. 55 1/4° W., 20.5 ft. dist., mkd. BT on a partially healed blaze.

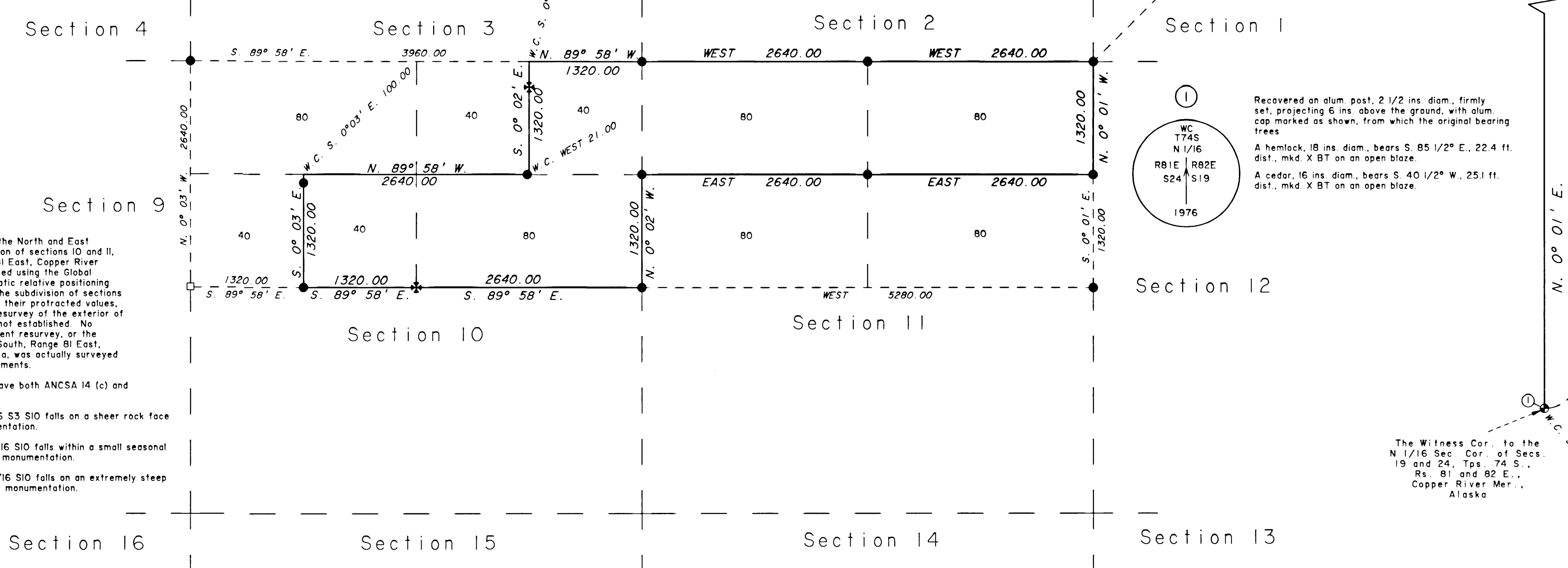
A hemlock stump, 24 ins. diam., bears N. 38 1/2° W., 18.5 ft. dist., mkd. S3 R81E S33 BT on a partially healed blaze.



Recovered an alum. post, 2 1/2 ins. diam., firmly set, projecting 6 ins. above the ground, with alum. cap marked as shown, from which the original bearing trees

A hemlock, 18 ins. diam., bears S. 85 1/2° E., 22.4 ft. dist., mkd. X BT on an open blaze.

A cedar, 16 ins. diam., bears S. 40 1/2° W., 25.1 ft. dist., mkd. X BT on an open blaze.



NOTE

The dependent resurvey of the North and East boundaries, and the subdivision of sections 10 and 11, Township 74 South, Range 81 East, Copper River Meridian, Alaska, was executed using the Global Positioning System, using static relative positioning techniques. Monuments for the subdivision of sections 10 and 11 were established at their protracted values, based upon the dependent resurvey of the exterior of the township. True line was not established. No portion of either the dependent resurvey, or the subdivision of Township 74 South, Range 81 East, Copper River Meridian, Alaska, was actually surveyed on the ground between monuments.

All monuments established have both ANCSA 14 (c) and Public Land Survey markings.

The true point for the E 1/16 S3 S10 falls on a sheer rock face and is unsuitable for monumentation.

The true point for the NE 1/16 S10 falls within a small seasonal stream and is unsuitable for monumentation.

The true point for the NW 1/16 S10 falls on an extremely steep hillside and is impractical for monumentation.

The Witness Cor. to the N 1/16 Sec. Cor. of Secs. 19 and 24, Tps. 74 S., Rs. 81 and 82 E., Copper River Mer., Alaska

Original Plat transmitted to Ketchikan Recording District and recorded on Sept. 12, 1995 as Plat # 95-57.

DUPLICATE ORIGINAL

THE COR. OF TPS. 73 AND 74 S. RS. 81 AND 82 E., COPPER RIVER MER., ALASKA, SEE SHEET No. 5 FOR RECOVERY INFORMATION.

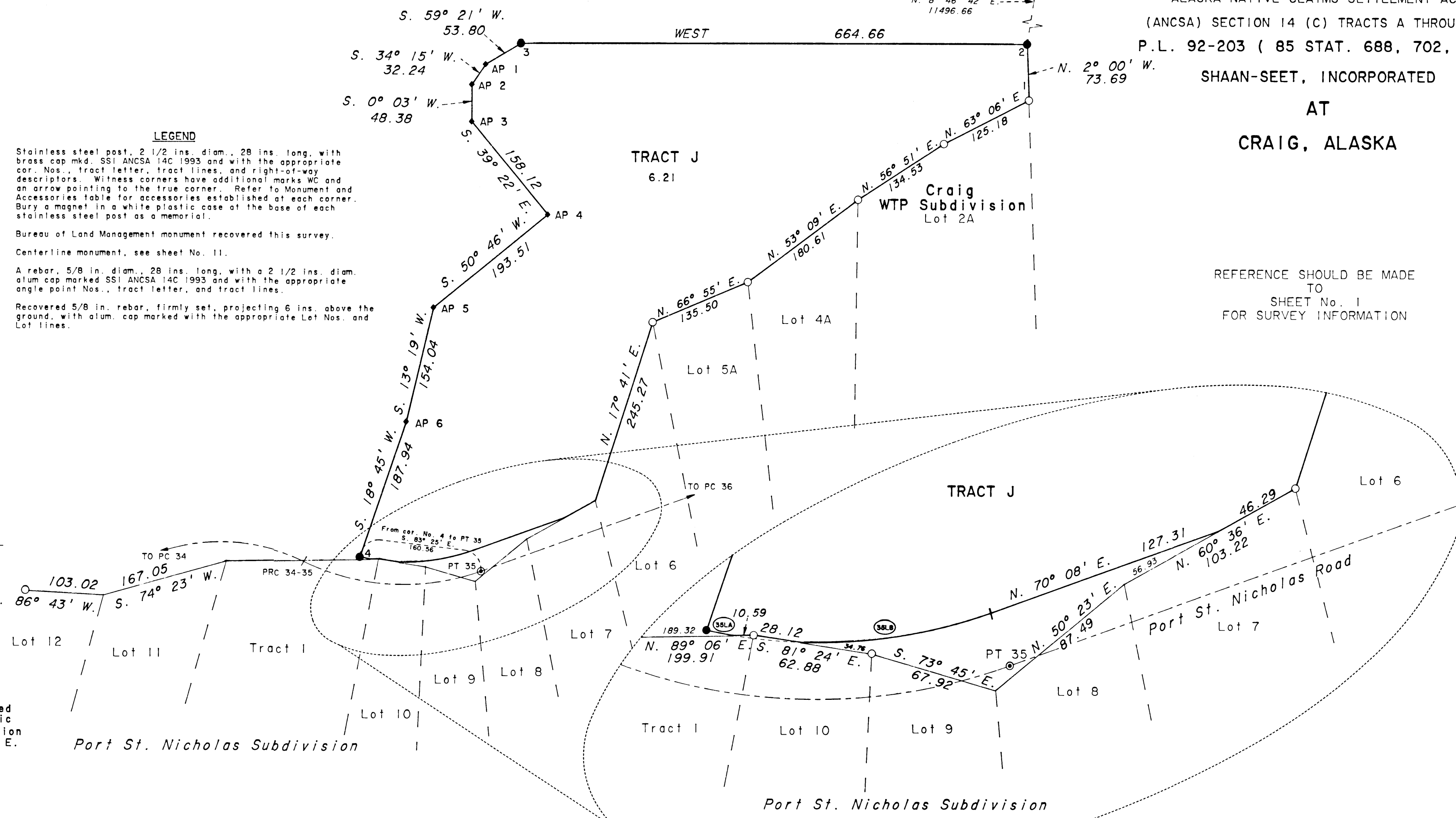
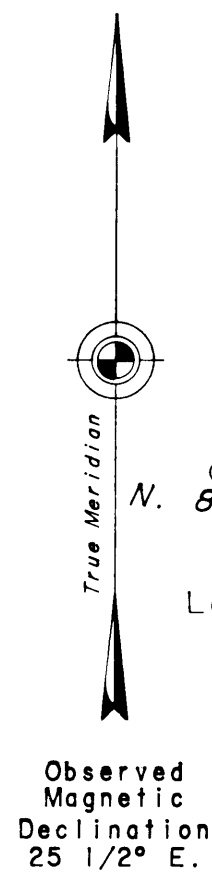
Sheet 8 of 14 Sheets

ALASKA NATIVE CLAIMS SETTLEMENT ACT
(ANCSA) SECTION 14 (C) TRACTS A THROUGH M
P.L. 92-203 (85 STAT. 688, 702, 703)
SHAAN-SEET, INCORPORATED
AT
CRAIG, ALASKA

REFERENCE SHOULD BE MADE TO SHEET No. 1 FOR SURVEY INFORMATION

LEGEND

- Stainless steel post, 2 1/2 ins. diam., 28 ins. long, with brass cap mkd. SSI ANCSA 14C 1993 and with the appropriate cor. Nos., tract letter, tract lines, and right-of-way descriptors. Witness corners have additional marks WC and an arrow pointing to the true corner. Refer to Monument and Accessories table for accessories established at each corner. Bury a magnet in a white plastic case at the base of each stainless steel post as a memorial.
- ⊙ Bureau of Land Management monument recovered this survey.
- ⊙ Centerline monument, see sheet No. 11.
- ◆ A rebar, 5/8 in. diam., 28 ins. long, with a 2 1/2 ins. diam. alum cap marked SSI ANCSA 14C 1993 and with the appropriate angle point Nos., tract letter, and tract lines.
- Recovered 5/8 in. rebar, firmly set, projecting 6 ins. above the ground, with alum. cap marked with the appropriate Lot Nos. and Lot lines.



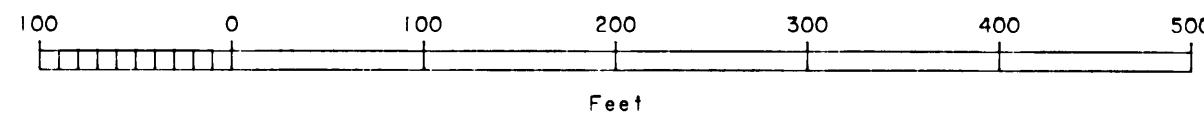
CURVE DATA

Curve	Radius	Arc Length	Chord Bearing	Long Chord
35LA	270.00	14.46	S. 79°13' E.	14.46
35LB	270.00	98.67	N. 80°36' E.	98.12

TRACT J MONUMENTS AND ACCESSORIES

All bearing trees are marked X BT.

MONUMENT	DEPTH IN INCHES	TREE DIAMETER IN INCHES & TYPE	BEARINGS IN DEGREES				DISTANCE IN FEET
			NE	SE	SW	NW	
C2	26	7 HEMLOCK			28 3/4		33.1
		16 HEMLOCK				35 1/4	14.8
C3	27	15 SPRUCE	82 1/2				45.1
		13 BIRCH		37 3/4			19.6
C4	28	POWER POLE		4 1/4			54.6
		12 ALDER	6 1/4				20.7



NOTE

The Port St. Nicholas Road consists of a 60 ft. wide right-of-way, 30 ft. on either side of the platted centerline. This road was surveyed along the apparent centerline of the existing roadbed and monumented accordingly. Refer to sheet No. 11 for centerline monument information.

The survey of Port St. Nicholas Road through Port St. Nicholas Subdivision is based upon the road easement filed in the Ketchikan Recording District on August 14, 1984, book 124, pages 670 through 675.

Line 3-4, Tract J, was surveyed as a 50 ft. offset to the east from the apparent centerline of Dog Salmon Creek. This line is a non-riparian, fixed and limiting boundary.

The northwesterly corner of Lot 1, Port St. Nicholas Subdivision, identical to the northeasterly corner of Lot 2A, Craig WTP Subdivision, is designated as corner No. 1, Tract J, of this ANCSA 14 (c) survey with no marks added to the alum. cap.

The southerly boundary of Tract J is coincident with a portion of Port St. Nicholas Subdivision. Lost corners of this portion of the subdivision were computed by Grant Boundary Adjustment methods. The lost corners were not re-established, and no marks were added to the existing private survey monuments.

Original Plat transmitted to Ketchikan Recording District and recorded on Sept. 12, 1995 as Plat #95-57.

DUPLICATE ORIGINAL

Sheet 9 of 14 Sheets

TRACT K MONUMENTS AND ACCESSORIES

All bearing trees are marked X BT.

MONUMENT	DEPTH IN INCHES	TREE DIAMETER IN INCHES & TYPE	BEARINGS IN DEGREES				DISTANCE IN FEET
			NE	SE	SW	NW	
WC1	25	16 HEMLOCK	79 3/4				10.6
		13 HEMLOCK			31		22.7
WC2	23	18 HEMLOCK	52 1/4				30.2
		9 HEMLOCK			36		19.1
WC3	25	13 SPRUCE	20 1/2				11.2
		16 SPRUCE		35			21.8
WC4	24	14 HEMLOCK	2				25.8
		17 HEMLOCK			60		54.4

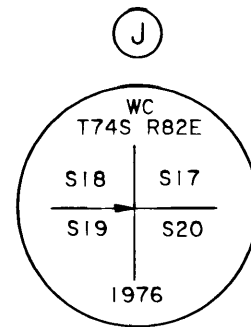
NOTE

The Port St. Nicholas Road consists of a 60 ft wide right-of-way, 30 ft. on either side of the platted centerline. This road was surveyed along the apparent centerline of the existing roadbed and monumented accordingly. Refer to sheet No. 12 for centerline monument information.

Line 1-2, Tract K, is coincident with a portion of the protracted section line between sections 17 and 18, Township 74 South, Range 82 East, Copper River Meridian, Alaska. This position is based upon the computed values obtained from the depicted ties to existing rectangular corners. Only this portion of the rectangular section line was surveyed. No other portions of sections 17 or 18 have been surveyed as of the date of this survey's approval.

Corner No. 2, Tract K, falls on a steep and unstable slope along the side of Port St. Nicholas Road and is impractical to monument.

Corner 3, Tract K, falls under a large pile of logs and is impractical to monument.



Recovered an alum. post, 2 1/2 ins. diam., firmly set, projecting 5 ins. above the ground with alum. cap mkd. as shown, from which the original bearing trees

A hemlock stump, 18 ins. diam., bears N. 16 1/2° E., 25.1 ft. dist., mkd. X BT.

A fallen hemlock, 28 ins. diam., bears S. 25 1/2° E., 49.5 ft. dist., mkd. X BT.

A fallen hemlock, 14 ins. diam., bears S. 69 1/2° W., 69.3 ft. dist., mkd. X BT.

A cedar stump, 24 ins. diam., bears N. 20° W., 33.0 ft. dist., with scribe marks visible on a partially headed blaze.

A hemlock, 24 ins. diam., bears N. 66° E., 48.2 ft. dist., mkd. X BT. (not in the original field notes)

A hemlock, 6 ins. diam., bears S. 14° W., 33.7 ft. dist., mkd. X BT. (not in the original field notes)

CURVE DATA

Curve	Radius	Arc Length	Chord Bearing	Long Chord
51R	1343.10	319.19	N. 87°52' E.	318.44
52R	2874.60	286.81	N. 78°13' E.	286.69
53R	1126.65	313.30	N. 67°23' E.	312.29

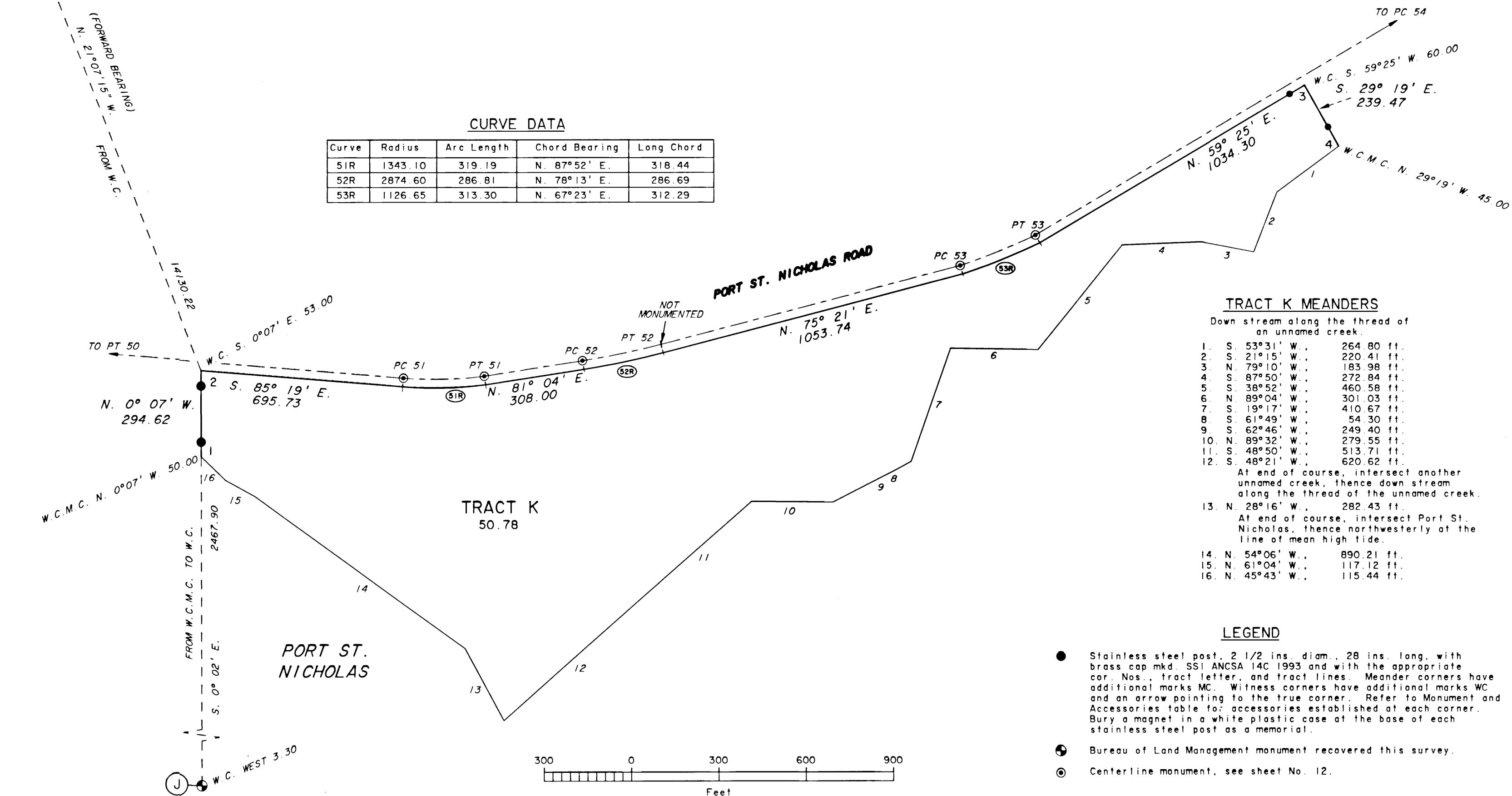
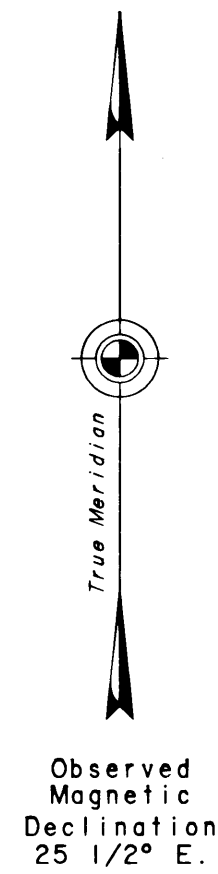
ALASKA NATIVE CLAIMS SETTLEMENT ACT
(ANCSA) SECTION 14 (C) TRACTS A THROUGH M
P.L. 92-203 (85 STAT. 688, 702, 703)

SHAAN-SEET, INCORPORATED

AT
CRAIG, ALASKA

REFERENCE SHOULD BE MADE
TO
SHEET No. 1
FOR SURVEY INFORMATION

THE CORNER OF TPS. 73 AND 74 S., RS. 81 AND 82 E.,
COPPER RIVER MERIDIAN, ALASKA. SEE SHEET No. 5
FOR RECOVERY INFORMATION.



TRACT K MEANDERS

Down stream along the thread of an unnamed creek.

- S. 53°31' W., 264.80 ft.
- S. 21°15' W., 220.41 ft.
- N. 79°10' W., 183.98 ft.
- S. 87°50' W., 272.84 ft.
- S. 38°52' W., 460.58 ft.
- N. 89°04' W., 301.03 ft.
- S. 19°17' W., 410.67 ft.
- S. 61°49' W., 54.30 ft.
- S. 62°46' W., 249.40 ft.
- N. 89°32' W., 279.55 ft.
- S. 48°50' W., 513.71 ft.
- S. 48°21' W., 620.62 ft.

At end of course, intersect another unnamed creek, thence down stream along the thread of the unnamed creek.

- N. 28°16' W., 282.43 ft.

At end of course, intersect Port St. Nicholas, thence northwesterly at the line of mean high tide.

- N. 54°06' W., 890.21 ft.
- N. 61°04' W., 117.12 ft.
- N. 45°43' W., 115.44 ft.

LEGEND

- Stainless steel post, 2 1/2 ins. diam., 28 ins. long with brass cap mkd. SSI ANCSA 14C 1993 and with the appropriate cor. Nos., tract letter, and tract lines. Meander corners have additional marks MC. Witness corners have additional marks WC and an arrow pointing to the true corner. Refer to Monument and Accessories table for accessories established at each corner. Bury a magnet in a white plastic case at the base of each stainless steel post as a memorial.
- Bureau of Land Management monument recovered this survey.
- Centerline monument, see sheet No. 12.

Original Plat transmitted to Ketchikan Recording District and recorded on Sept. 12, 1995 as Plat # 95-57.

DUPLICATE

ORIGINAL

Sheet 10 of 14 Sheets

NOTE

The Port St. Nicholas Road consists of a 60 ft. wide right-of-way, 30 ft. on either side of the platted centerline. This road was surveyed along the apparent centerline of the existing roadbed and monumented accordingly.

The Craig-Klawock Highway was surveyed by the State of Alaska, Department of Highways project S-0924 (5) in 1971 and recorded in the Ketchikan Recording District, Plat No. 80-2, on January 9, 1980. Subsequent construction for this project destroyed all centerline monumentation in this area. Refer to item No. 3 in the note on the plat of Tract A, Crab Cove Heights, Plat No. 93-7. The 132 ft. wide right-of-way, 66 ft. on either side of centerline, was reconstructed based upon the existing paved roadway, the recovered right-of-way monumentation from Tract A, Crab Cove Heights, Plat No. 93-7, U. S. Survey No. 2613, and unrecorded right-of-way monumentation.

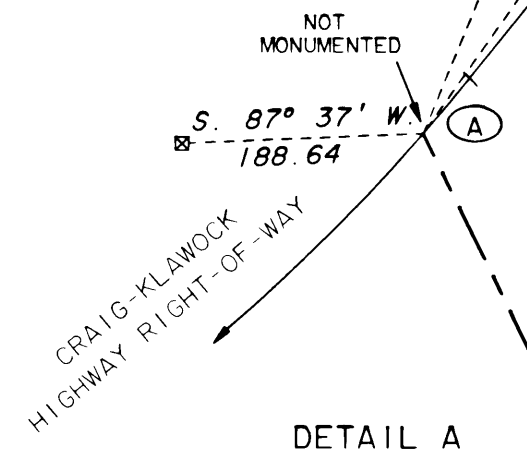
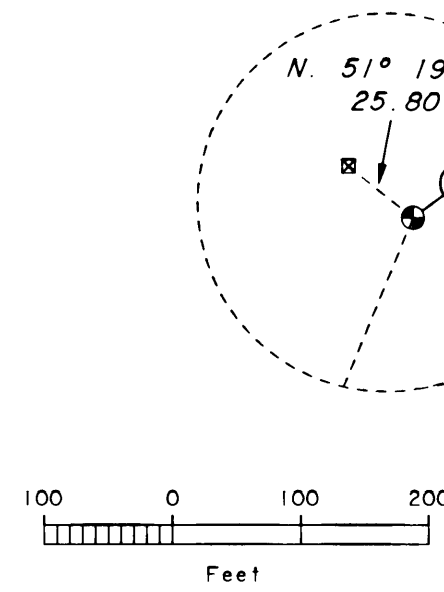
© Cor. No. 3, U.S.S. 2613, see sheet No. 3 for recovery information.

Recovered a copper rod, 3/4 in. diam., firmly set, with a brass cap mkd. "K5", set by the Dept. of Transportation inside a monument box on the east shoulder of the Craig-Klawock Highway.

ALASKA NATIVE CLAIMS SETTLEMENT ACT
(ANCSA) SECTION 14 (C) TRACTS A THROUGH M
P.L. 92-203 (85 STAT. 688, 702, 703)

SHAAN-SEET, INCORPORATED
CRAIG, ALASKA
PORT ST. NICHOLAS ROAD

REFERENCE SHOULD BE MADE TO
SHEET No. 1
FOR SURVEY INFORMATION



LEGEND

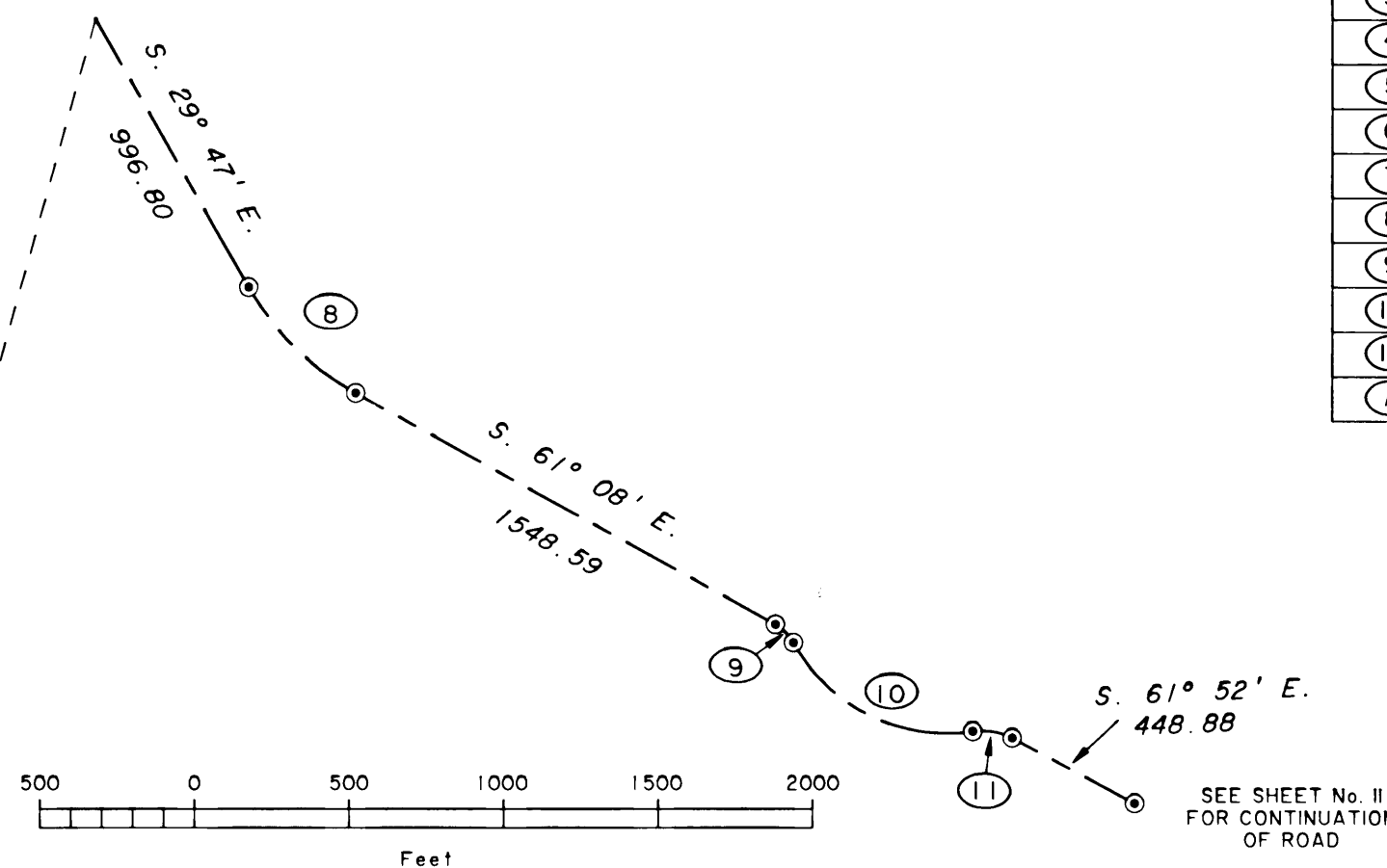
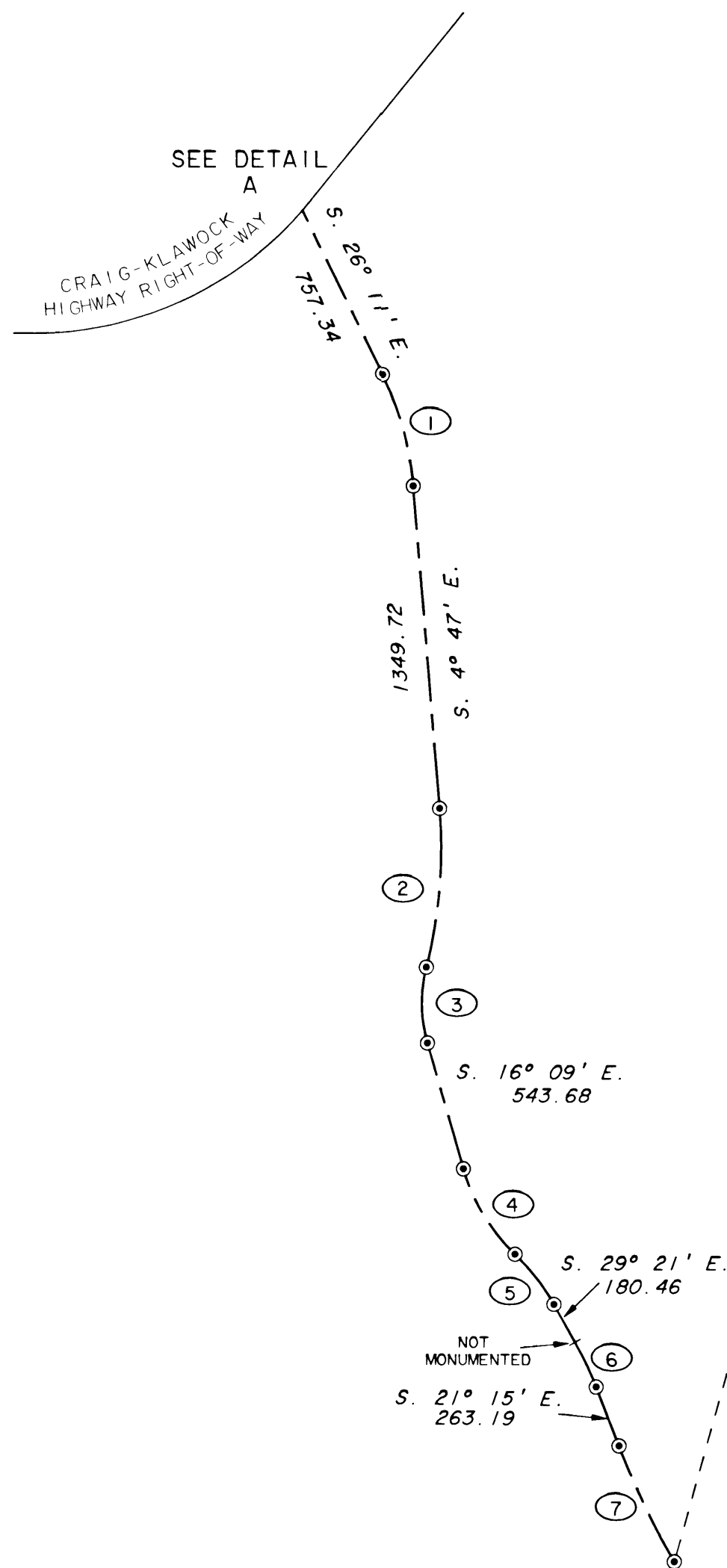
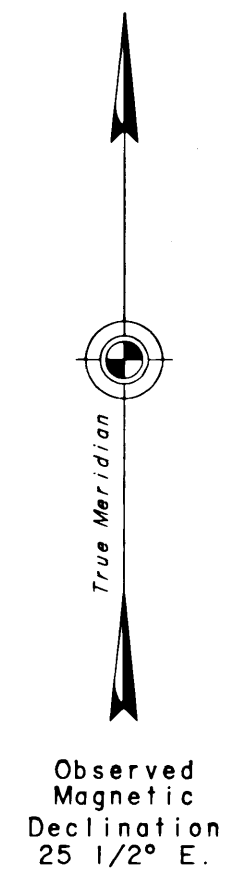
- ⊠ A wooden post, 4 x 4 ins., firmly set, projecting 10 ins. above the ground, with a 2 ins. diam. brass disc affixed to the top, mkd. ALASKA DEPT OF HWY ROW 1976. No record of these monuments was found.
- ⊙ 5/8 in. diam. rebar, 28 ins. long, buried 10 ins. below the ground with an alum. cap, 2 1/2 ins. diam., mkd. ANCSA 14(c) SSI 1993 along with the appropriate curve number and point designation. Refer to monumentation table for deviations and accessories.
- ⊕ Bureau of Land Management or General Land Office monument found this survey.

MONUMENTATION

CURVE	INS. LONG	INS. BELOW GND.
PRC 2-3	21	5
PC 4	16	5
PC 7	18	10
PC 8	16	4
PRC 10-11	28	6

CURVE TABLE

CURVE	RADIUS	LENGTH	CHORD BEARING	LONG CHORD
①	1294.00	483.31	S. 15° 29' E.	480.50
②	2000.00	664.89	S. 4° 44' W.	661.83
③	600.00	318.39	S. 0° 57' E.	314.67
④	800.00	420.67	S. 31° 13' E.	415.84
⑤	900.00	265.69	S. 37° 49' E.	264.72
⑥	1454.40	205.79	S. 25° 18' E.	205.62
⑦	3595.00	535.91	S. 25° 31' E.	535.42
⑧	897.60	491.22	S. 45° 28' E.	485.11
⑨	148.10	83.63	S. 44° 57' E.	82.52
⑩	564.70	688.14	S. 63° 41' E.	646.34
⑪	205.30	131.62	S. 80° 14' E.	129.38
A	1498.50	56.67	S. 39° 52' W.	56.66



Original Plat transmitted to Ketchikan Recording District and recorded on Sept. 12, 1995 as Plat #95-57.

DUPLICATE

ORIGINAL

CURVE TABLE

CURVE	RADIUS	ARC LENGTH	CHORD BEARING	LONG CHORD	CURVE	RADIUS	ARC LENGTH	CHORD BEARING	LONG CHORD
12	2300.00	795.20	S. 51°57' E.	791.24	30	5476.87	308.49	N. 63°46' E.	308.46
13	1000.00	476.56	S. 55°42' E.	472.06	31	1341.41	399.24	N. 73°55' E.	397.77
14	1200.00	320.61	S. 77°00' E.	319.66	32	714.15	363.77	S. 82°58' E.	359.85
15	1300.00	487.04	S. 73°55' E.	484.19	33	300.00	197.91	S. 87°16' E.	194.34
16	4775.20	905.34	S. 68°37' E.	903.99	34	250.00	183.45	S. 85°09' E.	179.36
17	438.71	154.59	S. 84°08' E.	153.79	35	300.00	239.52	S. 87°00' E.	233.21
18	500.00	94.83	N. 80°20' E.	94.69	36	802.90	257.84	N. 79°20' E.	256.73
19	450.00	260.55	S. 88°31' E.	256.93	37	338.15	154.85	S. 78°21' E.	153.50
20	900.00	381.13	S. 84°03' E.	378.29	38	600.00	305.14	S. 79°48' E.	301.86
21	300.00	162.24	S. 80°42' E.	160.27	39	800.00	368.23	S. 81°10' E.	364.99
22	1024.06	335.84	S. 74°35' E.	334.34	40	1130.03	224.76	S. 73°41' E.	224.39
23	396.64	239.24	N. 78°44' E.	235.63	41	284.48	64.58	S. 85°53' E.	64.44
24	1000.00	448.76	N. 48°36' E.	445.00	42	1200.00	231.79	N. 82°05' E.	231.43
25	350.00	99.49	N. 43°53' E.	99.16	43	1000.00	266.87	N. 84°12' E.	266.08
26	450.00	383.39	N. 76°27' E.	371.90	44	1000.00	122.27	N. 88°21' E.	122.20
27	600.00	225.69	S. 89°55' E.	224.36	45	1500.00	246.24	N. 89°33' E.	245.97
28	439.75	93.35	N. 73°13' E.	93.18	46	650.10	161.12	S. 78°39' E.	160.71
29	2673.58	233.12	N. 64°39' E.	233.04					

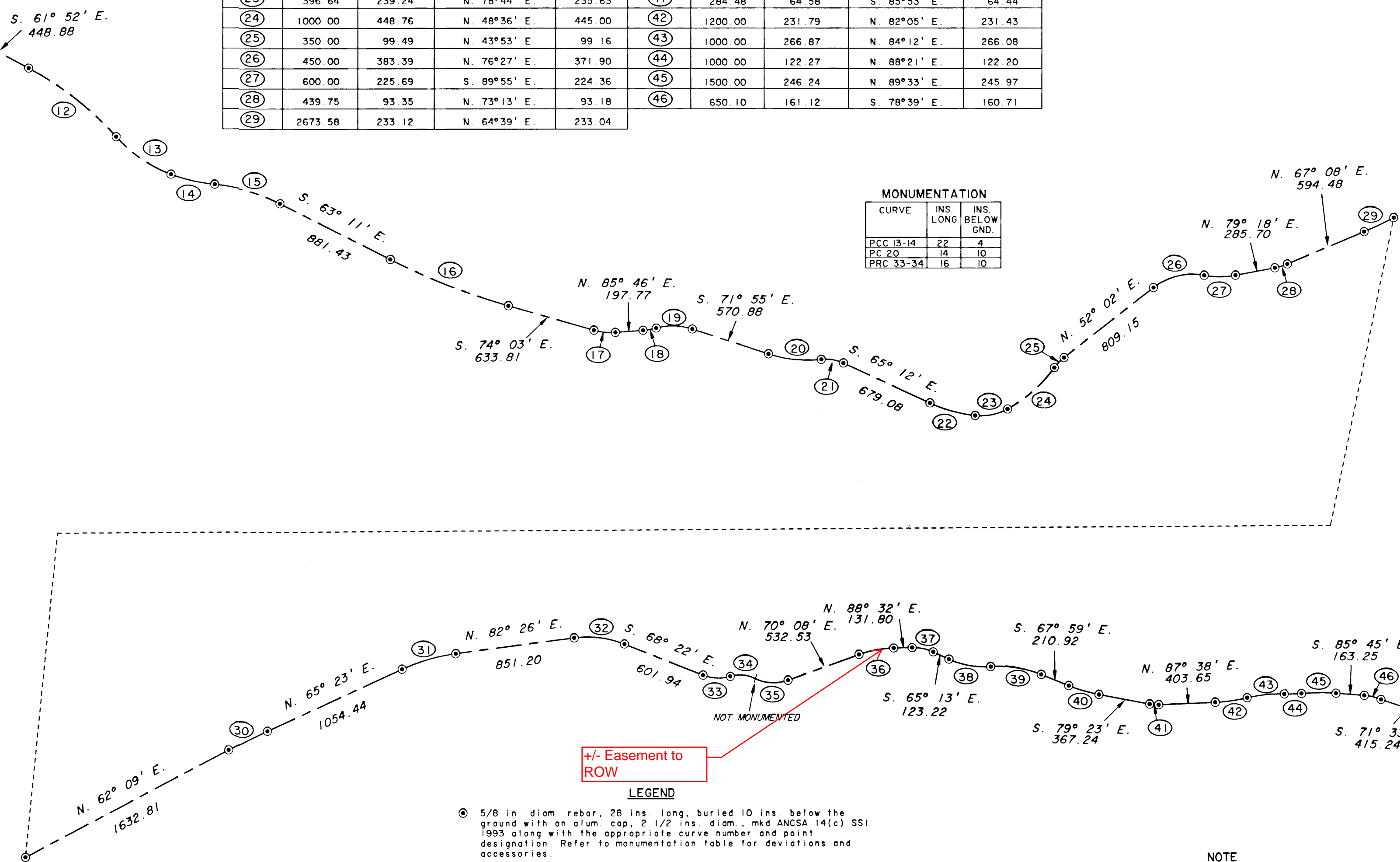
ALASKA NATIVE CLAIMS SETTLEMENT ACT
(ANCSA) SECTION 14 (C) TRACTS A THROUGH M
P.L. 92-203 (85 STAT. 688, 702, 703)

SHAAN-SEET, INCORPORATED

CRAIG, ALASKA

PORT ST. NICHOLAS ROAD

SEE SHEET No. 10
FOR CONTINUATION
OF ROAD



MONUMENTATION

CURVE	INS. LONG	INS. BELOW GND.
PCC 13-14	22	4
PC 20	14	10
PRC 33-34	16	10

True Meridian
Observed Magnetic Declination 25 1/2° E.

SEE SHEET No. 12
FOR CONTINUATION
OF ROAD

NOTE
The Port St. Nicholas Road consists of a 60 ft. wide right-of-way, 30 ft. on either side of the platted centerline. This road was surveyed along the apparent centerline of the existing roadbed and monumented accordingly.

Original Plat transmitted to Ketchikan Recording District and recorded on Sept. 12, 1995 as Plat #95-57.

DUPLICATE

ORIGINAL

ALASKA NATIVE CLAIMS SETTLEMENT ACT
(ANCSA) SECTION 14 (C) TRACTS A THROUGH M
P.L. 92-203 (85 STAT. 688, 702, 703)

SHAAN-SEET, INCORPORATED

CRAIG, ALASKA

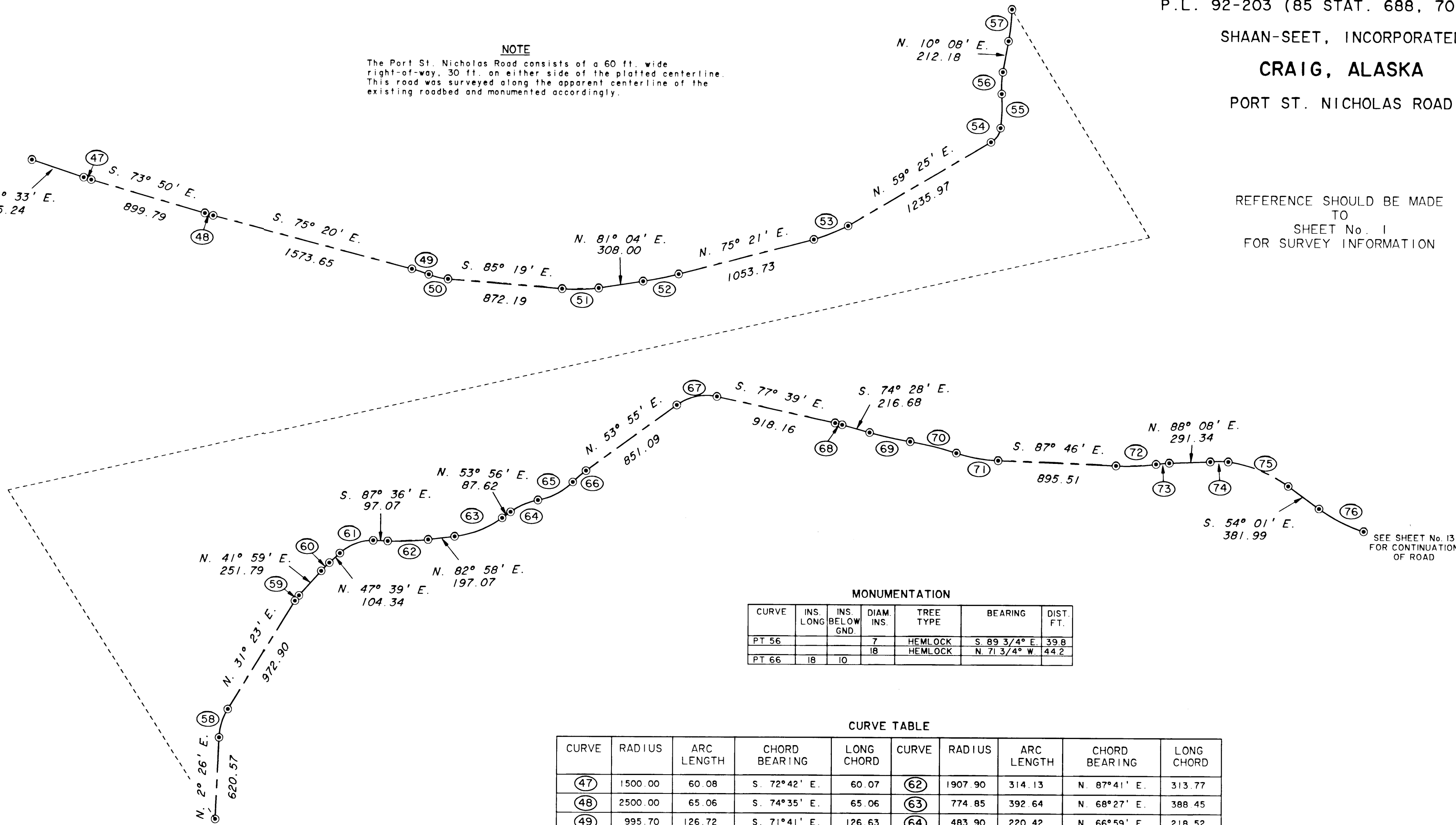
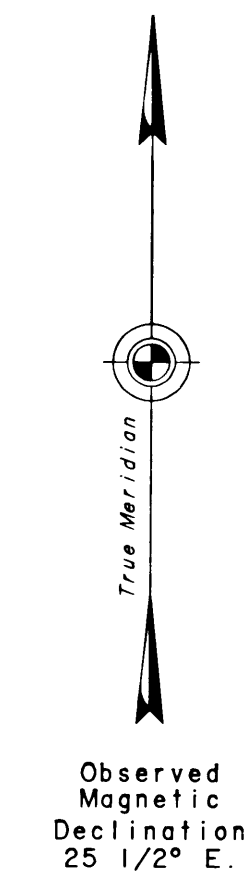
PORT ST. NICHOLAS ROAD

REFERENCE SHOULD BE MADE TO SHEET No. 1 FOR SURVEY INFORMATION

NOTE
The Port St. Nicholas Road consists of a 60 ft. wide right-of-way, 30 ft. on either side of the platted centerline. This road was surveyed along the apparent centerline of the existing roadbed and monumented accordingly.

SEE SHEET No. II FOR CONTINUATION OF ROAD

SEE SHEET No. 13 FOR CONTINUATION OF ROAD



MONUMENTATION

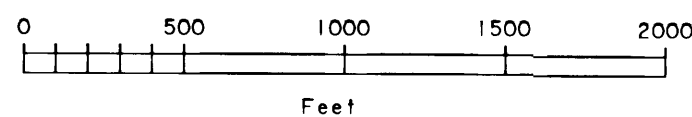
CURVE	INS. LONG	INS. BELOW GND.	DIAM. INS.	TREE TYPE	BEARING	DIST. FT.
PT 56			7	HEMLOCK	S. 89 3/4° E.	39.8
PT 66	18	10	18	HEMLOCK	N. 71 3/4° W	44.2

CURVE TABLE

CURVE	RADIUS	ARC LENGTH	CHORD BEARING	LONG CHORD	CURVE	RADIUS	ARC LENGTH	CHORD BEARING	LONG CHORD
47	1500.00	60.08	S. 72°42' E.	60.07	62	1907.90	314.13	N. 87°41' E.	313.77
48	2500.00	65.06	S. 74°35' E.	65.06	63	774.85	392.64	N. 68°27' E.	388.45
49	995.70	126.72	S. 71°41' E.	126.63	64	483.90	220.42	N. 66°59' E.	218.52
50	500.00	150.73	S. 76°41' E.	150.16	65	488.25	303.38	N. 62°14' E.	298.52
51	1313.10	312.06	N. 87°52' E.	311.33	66	800.00	132.25	N. 49°11' E.	132.10
52	2844.60	283.82	N. 78°13' E.	283.70	67	383.30	324.02	N. 78°08' E.	314.46
53	1096.65	304.96	N. 67°23' E.	303.98	68	1000.00	55.57	S. 76°04' E.	55.56
54	150.00	134.97	N. 33°39' E.	130.46	69	3000.00	317.05	S. 77°30' E.	316.91
55	1200.00	259.99	N. 1°40' E.	259.48	70	2500.00	362.02	S. 76°23' E.	361.70
56	650.00	166.44	N. 2°47' E.	165.98	71	1201.15	325.65	S. 80°00' E.	324.65
57	1992.42	267.76	N. 6°17' E.	267.56	72	1876.00	305.60	N. 87°34' E.	305.27
58	448.54	226.56	N. 16°54' E.	224.16	73	1350.50	123.35	N. 85°31' E.	123.31
59	274.31	50.81	N. 36°41' E.	50.74	74	2645.05	136.96	N. 89°37' E.	136.94
60	922.00	91.19	N. 44°49' E.	91.15	75	674.00	410.54	S. 71°28' E.	404.22
61	372.55	290.99	N. 70°02' E.	283.65	76	1200.00	382.57	S. 63°09' E.	380.95

LEGEND

⊙ 5/8 in. diam rebar, 28 ins. long, buried 10 ins. below the ground with an alum. cap, 2 1/2 ins. diam., mkd ANCSA 14(c) SSI 1993 along with the appropriate curve number and point designation. Refer to monumentation table for deviations and accessories.



Original Plat transmitted to Ketchikan Recording District and recorded on Sept. 12, 1995 as Plat # 95-57.

DUPLICATE

ORIGINAL

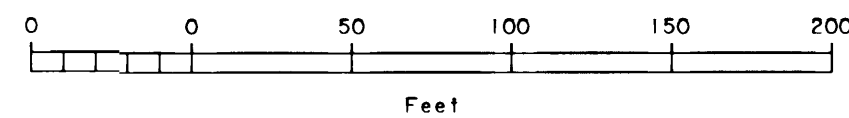
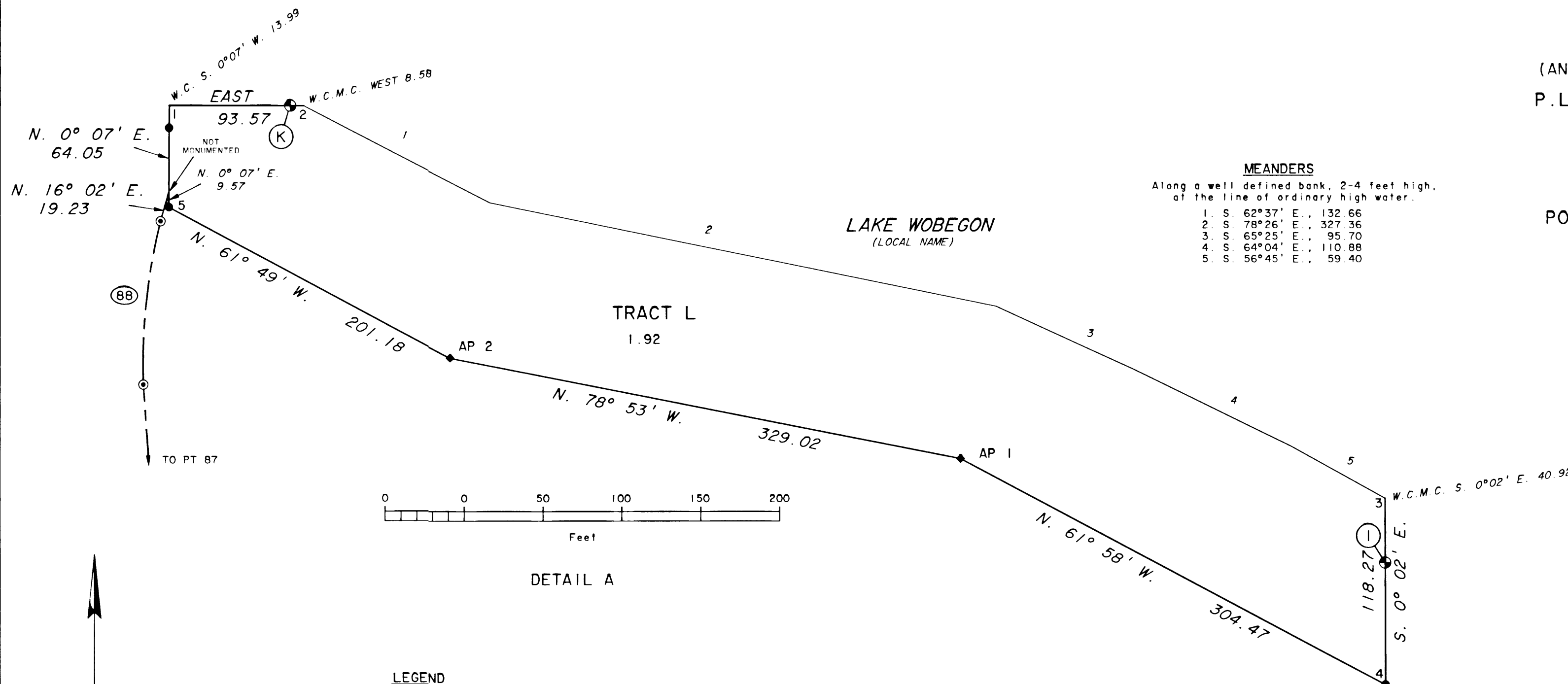
ALASKA NATIVE CLAIMS SETTLEMENT ACT
(ANCSA) SECTION 14 (C) TRACTS A THROUGH M
P.L. 92-203 (85 STAT. 688, 702, 703)

SHAAN-SEET, INCORPORATED

CRAIG, ALASKA

PORT ST. NICHOLAS ROAD AND TRACT L

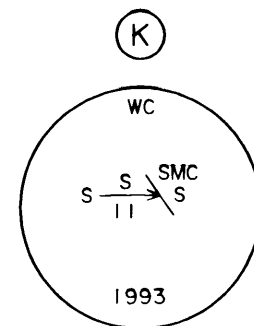
REFERENCE SHOULD BE MADE
TO
SHEET No. 1
FOR SURVEY INFORMATION



DETAIL A

LEGEND

- 5/8 in. diam rebar, 28 ins. long, buried 10 ins. below the ground with an alum. cap, 2 1/2 ins. diam., mkd ANCSA 14(c) SSI 1993 along with the appropriate curve number and point designation. Refer to monumentation table for deviations and accessories.
- Bureau of Land Management monument recovered this survey.
- ◆ A rebar, 5/8 in. diam., 28 ins. long, with a 2 1/2 ins. diam. alum cap marked SSI ANCSA 14C 1993 and with the appropriate angle point Nos., tract letter, and tract lines.
- Stainless steel post, 2 1/2 ins. diam., 28 ins. long, with brass cap mkd. SSI ANCSA 14C 1993 and with the appropriate cor. Nos., tract letter and tract lines. Witness corners have additional marks WC and an arrow pointing to the true corner. Bury a magnet in a white plastic case at the base of each stainless steel post as a memorial.

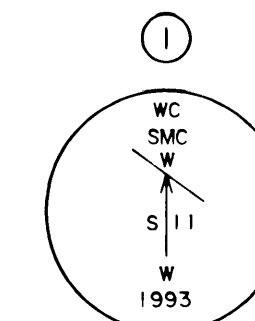


Recovered a brass tablet, 3/4 ins. diam., cemented to a 6 x 5 x 3 ft. granite boulder near the southerly end of a concrete dam, tablet mkd. as shown, from which the original accessories.

A rock outbank, 15 ft. high, 40 ft. long, bears S. 27 1/2° W., 53.00 ft. dist., mkd X B0 on the northerly face.

A concrete wall, 3 1/2 ft. high, 5 1/2 ft. long, 9 ins. thick, bears N. 25 3/4° W., 17.75 ft. dist., mkd X B0 on the southerly face.

This cor. is now designated as cor. No. 2, Tract L. No marks were added to the brass cap.



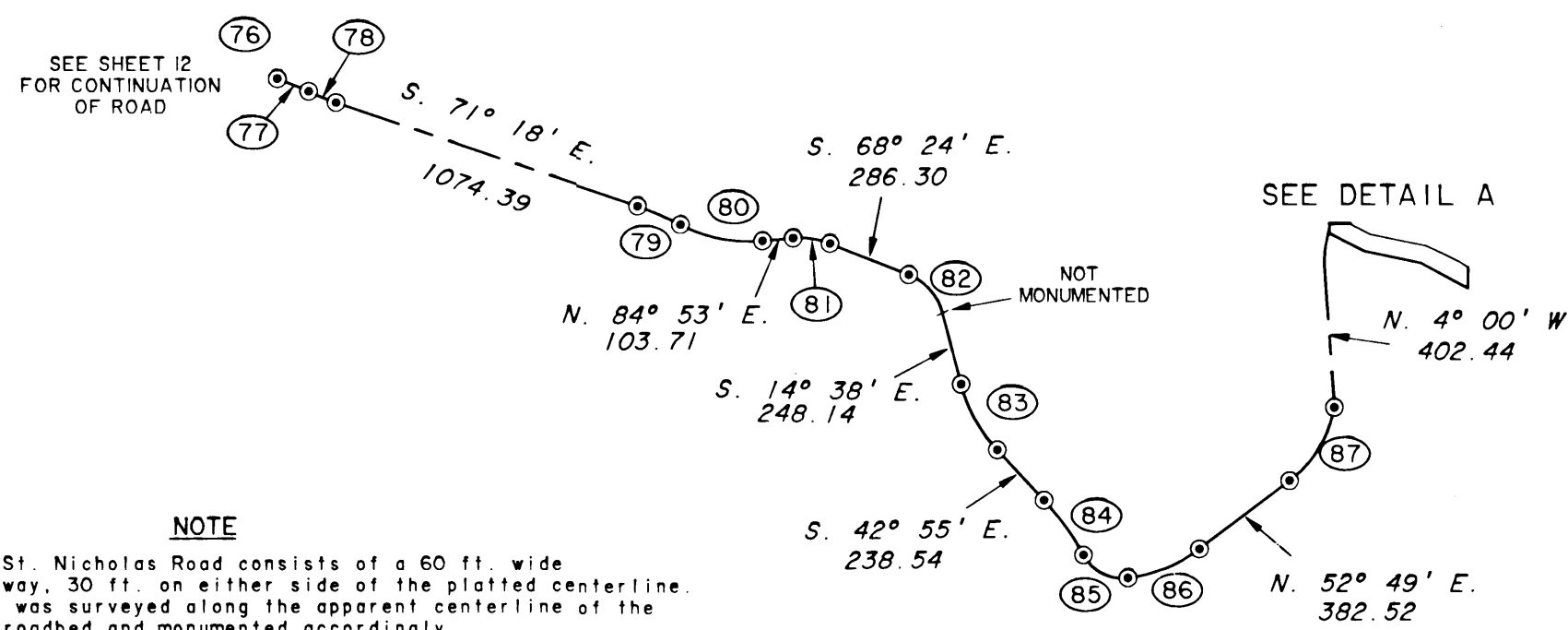
Recovered a stainless steel post, 2 1/2 ins. diam., firmly set, projecting 1 in. above ground, with brass cap mkd. as shown, from which the original bearing trees.

A pine, 8 ins. diam., bears S. 33° E., 16.17 ft. dist., mkd. X BT on an open blaze.

A pine, 5 ins. diam., bears S. 50° W., 19.80 ft. dist., mkd. X BT on an open blaze.

This cor. is now designated as cor. No. 3, Tract L. No marks were added to the brass cap.

Observed Magnetic Declination 25 1/2° E.

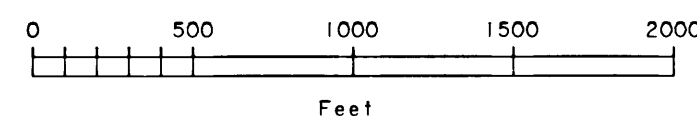


NOTE

The Port St. Nicholas Road consists of a 60 ft. wide right-of-way, 30 ft. on either side of the platted centerline. This road was surveyed along the apparent centerline of the existing roadbed and monumented accordingly.

Lines 1-2 and 3-4, Tract L, are coincident with the East & West and North & South centerlines, respectively, of the SW 1/4 of Sec. 11, Tp. 74 S., R. 82 E., Copper River Meridian, Alaska.

Cor. No. 1, Tract L fell on a steep incline and was impractical to monument.



CURVE TABLE

CURVE	RADIUS	ARC LENGTH	CHORD BEARING	LONG CHORD
(77)	800.00	113.89	S. 68°12' E.	113.80
(78)	800.00	100.15	S. 67°43' E.	100.08
(79)	1000.00	158.19	S. 66°45' E.	158.03
(80)	500.00	287.11	S. 78°41' E.	283.18
(81)	272.58	127.12	S. 81°46' E.	125.97
(82)	190.44	178.70	S. 41°31' E.	172.22
(83)	503.70	248.64	S. 28°46' E.	246.12
(84)	900.00	229.46	S. 35°37' E.	228.84
(85)	150.00	179.72	S. 62°38' E.	169.16
(86)	500.00	263.70	N. 67°56' E.	260.66
(87)	369.90	366.80	N. 24°25' E.	351.95
(88)	298.80	104.48	N. 6°01' E.	103.95

MONUMENTATION

CURVE	INS. LONG	INS. BELOW GND.	DIAM. INS.	TREE TYPE	BEARING	DIST. FT.
PC 83			7	SPRUCE	S. 61 1/2° E.	38.6
			6	CEDAR	S. 17° W.	71.0
PC 88			9	SPRUCE	S. 37 1/2° W.	72.0
PT 88	20	4	12	CEDAR	N. 28 1/2° W.	85.4

Original Plat transmitted to Ketchikan Recording District
and recorded on Sept. 12, 1995 as Plat #95-57.

DUPLICATE

ORIGINAL

Sheet 14 of 14 Sheets

ALASKA NATIVE CLAIMS SETTLEMENT ACT
(ANCSA) SECTION 14 (C) TRACTS A THROUGH M
P.L. 92-203 (85 STAT. 688, 702, 703)

SHAAN-SEET, INCORPORATED

AT
CRAIG, ALASKA

REFERENCE SHOULD BE MADE
TO
SHEET No. 1
FOR SURVEY INFORMATION

