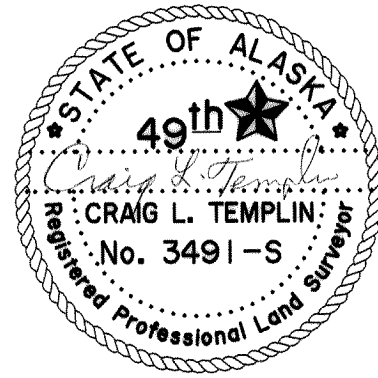


**SURVEYORS CERTIFICATE**

I hereby certify that I am properly registered and licensed to practice land surveying in the State of Alaska, that this plat represents a survey made by me or under my direct supervision, that the monuments shown hereon actually exist as described and that all dimensions and other details are correct.

Craig L. Templin 1/24/00  
 CRAIG L. TEMPLIN, AK RLS No. 3491 Date

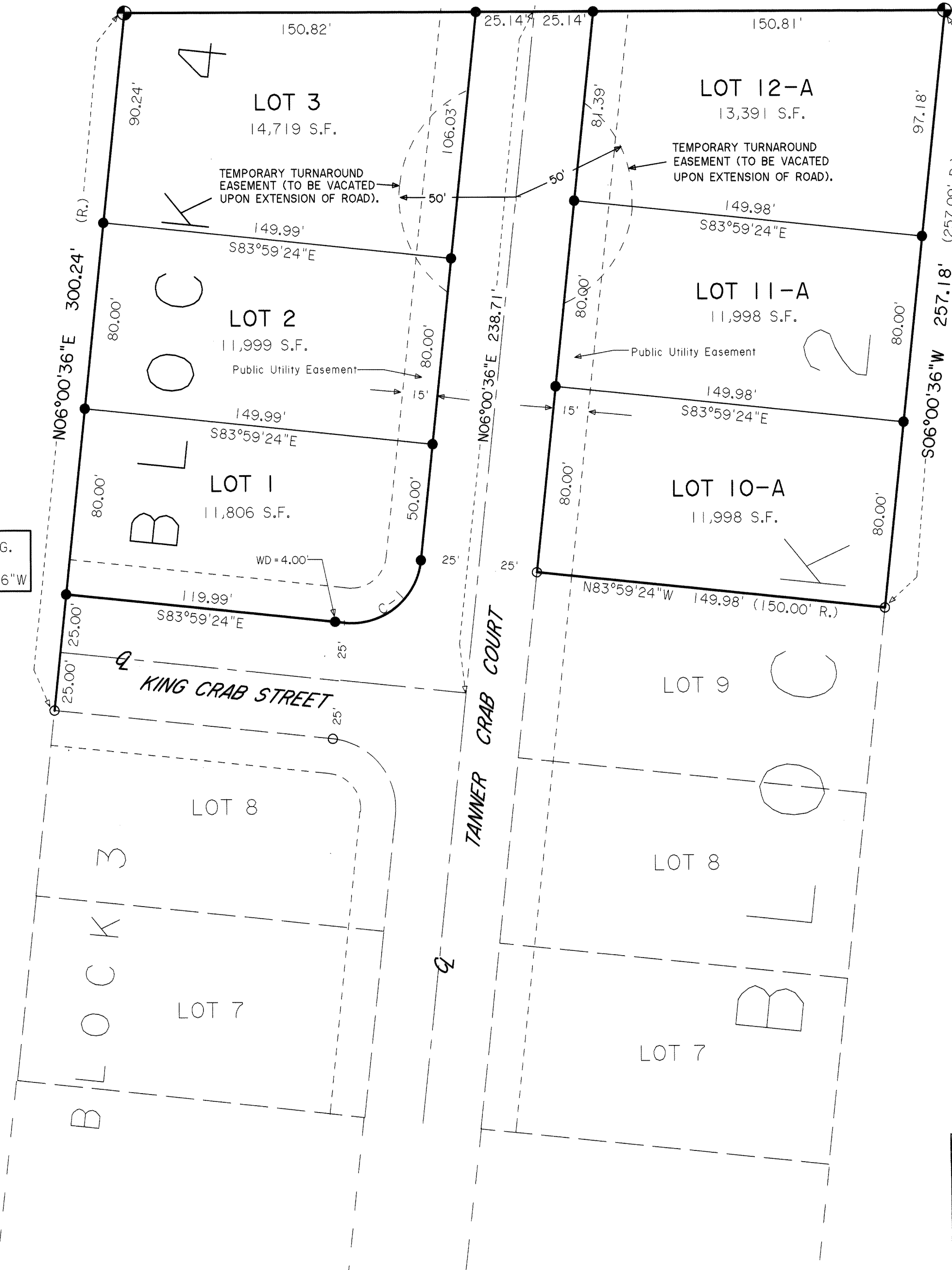


**TAX STATEMENT**

I hereby certify that all ad valorem taxes, special assessments, and other charges required by law to be placed on the tax rolls have been paid.

Vicki Hamilton 1/24/00  
 City Clerk Date

**BASIS OF BEARINGS - PLAT 94-14**  
 N90°00'00"E 351.90' (351.94' R.)

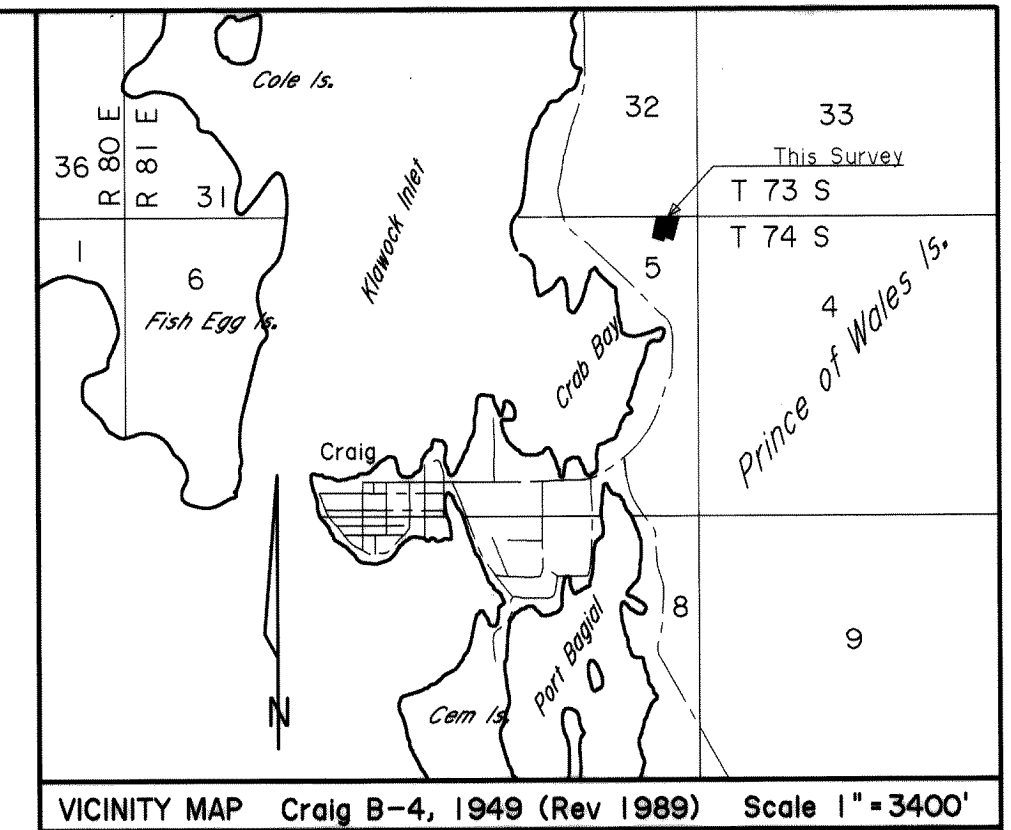
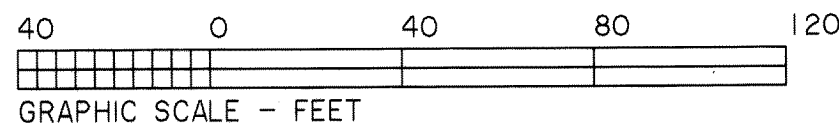


**Curve Table**

CV	RADIUS	ARC	DELTA	CHORD	CH. BRG.
C-1	30.00'	47.12'	90°00'00"	42.43'	S51°00'36"W

**LEGEND:**

- ⊕ Found Primary Monument
- Found Secondary Monument
- Set Secondary Monument
- WD Witness Distance
- (R) Record Data



VICINITY MAP Craig B-4, 1949 (Rev 1989) Scale 1" = 3400'

**CERTIFICATE OF OWNERSHIP AND DEDICATION**

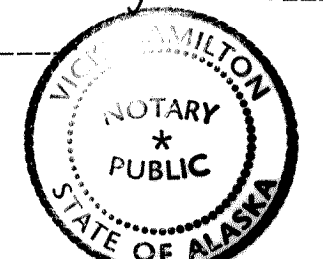
We hereby certify that we are the owners of LOTS 1-3, BLOCK 4 and LOTS 10A-12A, BLOCK 2, CRAB COVE HEIGHTS SUBD., that we do approve of this plat and that we do for ourselves, our heirs, and assigns dedicate, donate, and convey to the public all right-of-way/public utility areas/easements/other public ways as shown hereon.

Dennis Watson 1/31/9900  
 For City of Craig, Owner Date

**NOTARYS ACKNOWLEDGEMENT**

Subscribed and sworn before me this 31<sup>st</sup> day of January, 2000.  
 Personally appeared Dennis Watson

Vicki Hamilton  
 Notary Public for the State of Alaska  
 My Commission Expires 8-12-01



**APPROVAL BY CITY OF CRAIG PLANNING COMMISSION**

This final subdivision plat has been reviewed and approved in accordance with the Craig Land Development Code-Subdivision Ordinance. All dedications to the public have been inspected and accepted by the City of Craig.

Jan Bolje 1/26/00  
 City Platting Official Date  
Roy Mitchell 1/26/00  
 Presiding Officer - Planning Commission Date  
Karen Safford 1/25/00  
 Planning Commission Member Date

**CERTIFICATE OF IMPROVEMENTS**

All improvements will be installed by the City of Craig prior to occupation of the lots subject to this plat.

Mike McManis 1/25/2000  
 Reviewed and Approved: PUBLIC WORKS DIRECTOR Date  
Jan Bolje 1/25/00  
 Reviewed and approved: CITY OFFICIAL Date  
Karen Safford 1/25/00  
 Reviewed and approved by: PLANNING COMMISSION Date

PLAT OF:  
**LOTS 10-A, 11-A, & 12-A BLOCK 2;  
 and LOTS 1, 2, & 3 BLOCK 4;  
 CRAB COVE HEIGHTS SUBDIVISION**

A RESUBDIVISION OF LOTS 10 thru 15, BLOCK 2,  
 CRAB COVE HEIGHTS SUBDIVISION,  
 PLAT NO. 94-14, KETCHIKAN REC. DIST. AK.  
 Located within Section 5, T 74 S, R 81 E, CRM, AK  
 Containing 1.743 Acres

Surveyed For: CITY OF CRAIG PO BOX 725 CRAIG, AK 99921	Surveyed By: TEMPLIN LAND SURVEYING PO BOX WWP - WHALE PASS KETCHIKAN, AK. 99950 (907) 846-5120
---	---

Scale: 1" = 40' Date: 1/24/00 Drawn By: CLT Checked By: CLT

2000-5  
 Ketchikan REC DIST  
 \$20  
 DATE 2/4 2000  
 TIME 8:53 A.M.  
 Requested By City of  
 Address CRAIG