

ALASKA NATIVE CLAIMS SETTLEMENT ACT
 (ANCSA) SECTION 14 (C) TRACTS A THROUGH M
 P.L. 92-203 (85 STAT. 688, 702, 703)
SHAAN-SEET, INCORPORATED
AT
CRAIG, ALASKA
 AND
 THE DEPENDENT RESURVEY OF PORTIONS
 OF THE NORTH AND EAST BOUNDARIES
 AND SUBDIVISION OF PORTIONS OF
 TOWNSHIP 74 SOUTH, RANGE 81 EAST
 COPPER RIVER MERIDIAN, ALASKA
 AND THE DEPENDENT RESURVEY
 OF PORTIONS OF U.S. SURVEY No. 3857

This plat contains the entire survey record.
 The history of surveys in and around the Craig area is listed on sheet No. 4 of this document.

This survey was executed by David M. Klein, Cadastral Surveyor, June 8 through September 30, 1995, in accordance with the principles set forth in the Manual of Surveying Instructions, 1973; Special Instructions approved June 2, 1993; the Craig ANCSA 14(c) Map of Boundaries approved June 5, 1992, and assignment instructions dated June 8, 1993.

Field Assistants were:
 Joseph P. Burns, Supervisory Land Surveyor
 Michael O. Harmaning, Land Surveyor
 Daniel H. Leslie, Land Surveyor
 Timothy A. Quincy, Land Surveyor
 Roger E. Blauch, Student Trainee (LS)
 William R. Tackman, Student Trainee (LS)
 Gary L. McIntyre, Surveying Technician
 Jan T. Bolling, Volunteer
 Luanne Leslie, Volunteer

Area: 513.35 Acres.

The azimuth was obtained with the Global Positioning System (GPS), using static and pseudo-kinematic positioning techniques, and refers to the true meridian.

The geographic position of the Meander Corner for Sections 5 and 32, Townships 73 and 74 South, Range 81 East, Copper River Meridian, Alaska, identical with corner No. 1, ANCSA 14(c) Tract A, Block 2, as determined from the record of Township 73 South, Range 81 East, Copper River Meridian, Alaska, is:

Latitude: 55° 29' 22.77" NORTH
 Longitude: 133° 08' 10.75" WEST
 NAD 27

The magnetic declination was directly observed.

This Survey is situated in and around the city of Craig, Alaska, within Townships 74 South, Ranges 81 and 82 East, Copper River Meridian, Alaska.

The land consists mainly of steep, semi-rocky, terrain; the vegetation varies from mature old growth forest to logged forest with young thick regrowth and brush, the latter being the most prominent.

UNITED STATES DEPARTMENT OF THE INTERIOR
 BUREAU OF LAND MANAGEMENT
 Anchorage, Alaska

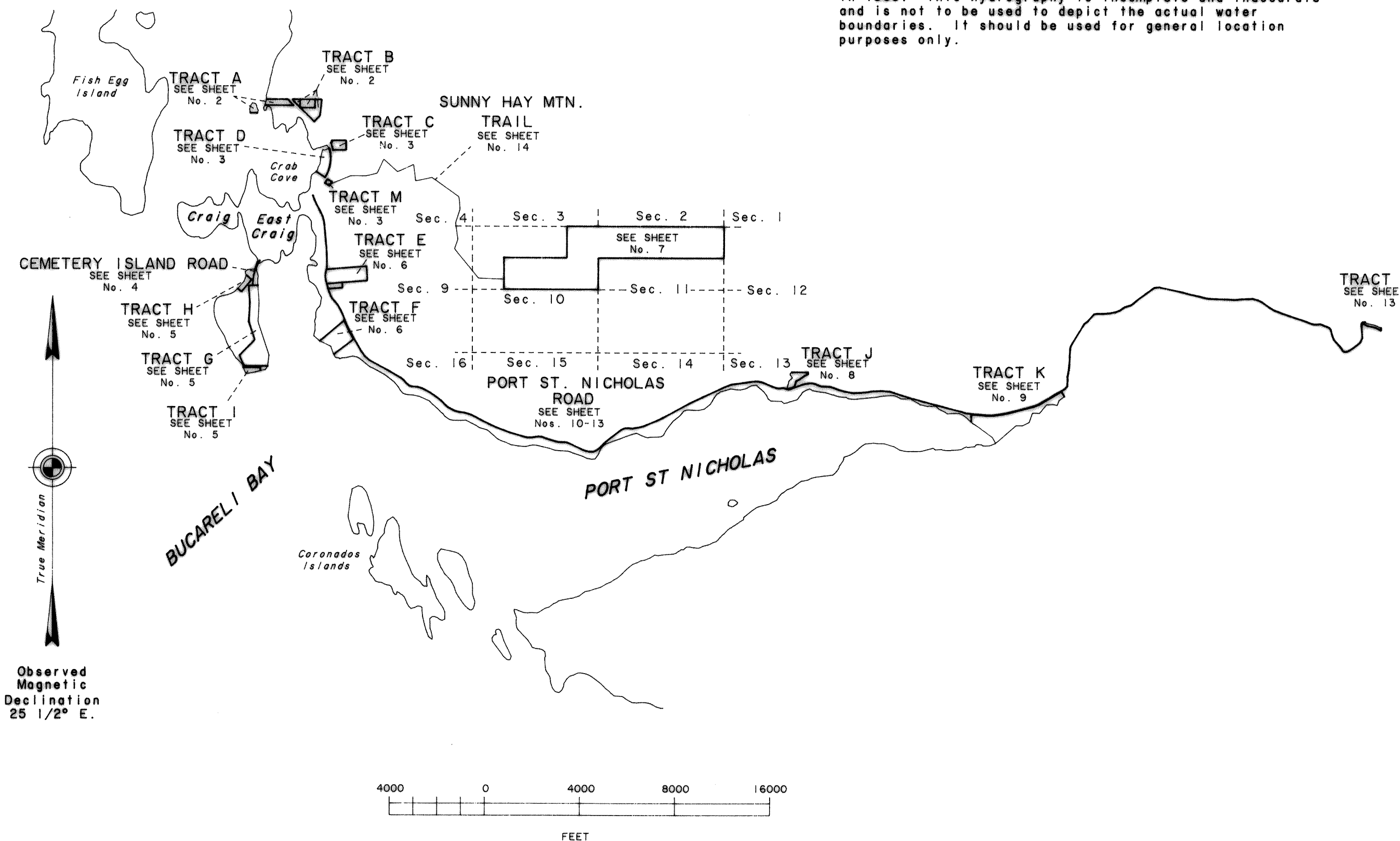
The survey represented by this plat, sheets 1 - 14, having been properly executed and examined, is hereby accepted for having fulfilled the requirements of Section 14(c) of the Alaska Native Claims Settlement Act.

For the Director

George D. Christ 30 August 1995
 Date

Deputy State Director for Cadastral Survey, Alaska

NOTE:
 Hydrography shown on this sheet was digitized from U.S. Geological Survey quadrangle maps "CRAIG (B-4)," 1949 edition, with limited revisions in 1986; and "CRAIG (B-3)," 1949 edition, with minor revisions in 1963. This hydrography is incomplete and inaccurate and is not to be used to depict the actual water boundaries. It should be used for general location purposes only.



I, David M. Klein, Cadastral Surveyor, HEREBY CERTIFY upon honor that I have executed the ANCSA 14(c) survey depicted on this plat, sheets 1-14, in conformity with the Special Instructions approved June 2, 1993, the principles of survey described in the Manual of Surveying Instructions, 1973, and in the specific manner described on this plat.

28 July 95 *David M. Klein*
 Date Cadastral Surveyor

I hereby certify that Tracts A through M, Port Saint Nicholas Road., Cemetery Island Road, and that portion of Section 10 and Section 11, Township 74 South, Range 81 East, Copper River Meridian, Alaska, represented on this plat of survey are on lands Interim Conveyed to Shaan-Seet, Incorporated by Interim Conveyance No. 261 and Patent No. 50-89-0693 issued by the United States of America; said tracts and roads also fulfill all entitlements under the provisions of ANCSA 14(c) as requested by Shaan-Seet, Incorporated Resolution Agreement No. 92-03, and the Craig ANCSA 14(c) Map of Boundaries approved June 5, 1992.

8-9-95 *David M. Klein*
 Date President, Shaan-Seet Incorporated

NOTE

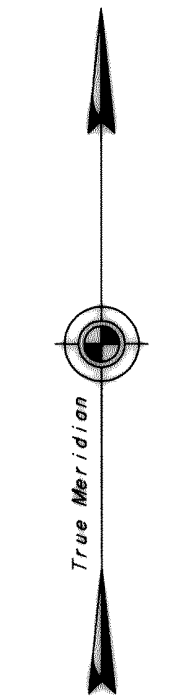
The Craig-Klawock Highway was surveyed by the State of Alaska, Department of Highways project S-0924 (5) in 1971 and recorded in the Ketchikan Recording District, Plat No. 80-2, on January 9, 1980. Subsequent construction for this project destroyed all centerline monumentation in the area of Tracts A and B. Refer to item No. 3 in the note on the plat of Tract A, Crab Cove Heights, Plat No. 93-7. The 132 ft. wide right-of-way, 66 ft. on either side of centerline, was reconstructed based upon the existing paved roadway, the recovered right-of-way monumentation from Tract A, Crab Cove Heights, Plat No. 93-7, U. S. Survey No. 2613, and unrecorded right-of-way monumentation.

ALASKA NATIVE CLAIMS SETTLEMENT ACT
(ANCSA) SECTION 14 (C) TRACTS A THROUGH M
P.L. 92-203 (85 STAT. 688, 702, 703)

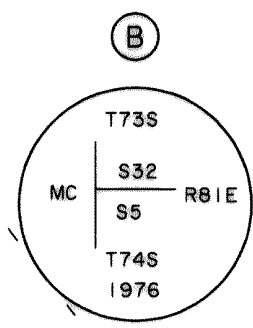
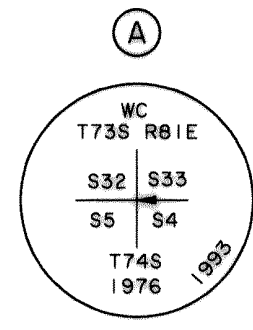
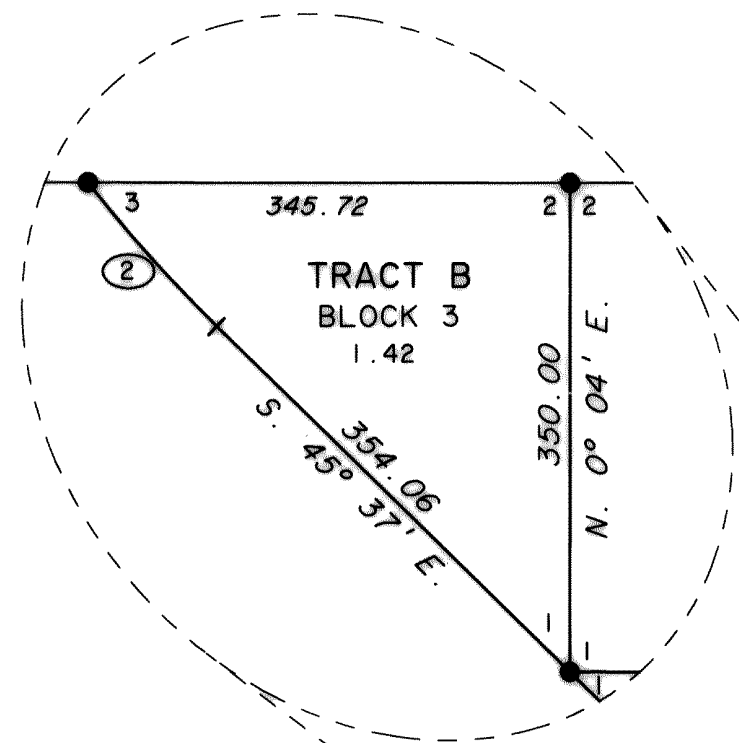
SHAAN-SEET, INCORPORATED
AT
CRAIG, ALASKA

REFERENCE SHOULD BE MADE
TO
SHEET No. 1
FOR SURVEY INFORMATION

The witness cor. to
secs. 4, 5, 32, 33,
Tps. 73 and 74 S.,
R. 81 E.,
Copper River Mer.,
Alaska.



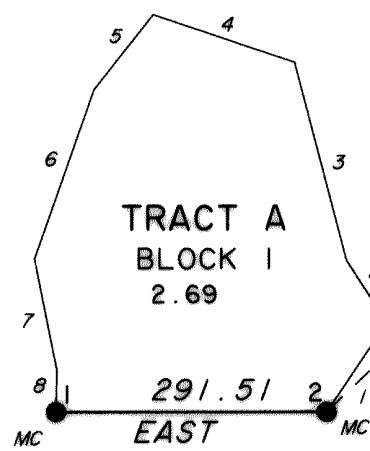
Observed
Magnetic
Declination
25 1/2° E.



- Recovered an alum. post, 2 1/2 ins. diam., firmly set, projecting 8 ins. above the ground, with alum. cap mkd. as shown, from which the original bearing trees
- A hemlock stump, 20 ins. diam., bears N. 45 1/2° E., 23.1 ft., with scribe marks visible but not discernible on a partially healed blaze.
- A hemlock stump, 20 ins. diam., bears S. 68 1/2° E., 42.2 ft. dist., with scribe marks visible on a partially healed blaze.
- A spruce 18 ins. diam., bears S. 32° W., 35.0 ft. dist., with a fully healed blaze.
- A hemlock 14 ins. diam., bears N. 12° W., 19.8 ft. dist., mkd. X BT.
- And new bearing trees
- A hemlock, 14 ins. diam., bears N. 71 1/2° E., 51.6 ft. dist., mkd. X BT.
- A spruce, 9 ins. diam., bears S. 12° E., 27.4 ft. dist., mkd. X BT.

- Recovered an alum. post, 2 1/2 ins. diam., firmly set, projecting 6 ins. above the ground, with alum. cap mkd. as shown, from which the original bearing trees
- A cedar, 14 ins. diam., bears N. 55 1/2° E., 51.5 ft. dist., with the marks T73N R81E visible on a mostly healed blaze
- A spruce, 27 ins. diam., bears S. 32 1/2° E., 33.7 ft. dist., with the marks E S5 MC BT visible on a mostly healed blaze.
- This point is now designated as the meander cor. to cor. No. 1, Tract A, Block 2; no marks were added to the alum. cap.

KLAWOCK INLET



CRAB BAY

TRACT A BLOCK 1 MEANDERS

Along a gradual sloping gravel shore at the line of mean high tide.

1. N. 34° 06' E., 115.89 ft.
2. N. 32° 47' W., 80.63 ft.
3. N. 14° 39' W., 219.62 ft.
4. N. 71° 15' W., 160.42 ft.
5. S. 38° 19' W., 103.09 ft.
6. S. 19° 31' W., 192.69 ft.
7. S. 11° 17' E., 122.93 ft.
8. S. 1° 30' W., 44.77 ft.

TRACT A BLOCK 2 MEANDERS

Along a gradual sloping gravel shore at the line of mean high tide.

1. N. 12° 29' E., 91.45 ft.
2. N. 15° 02' E., 166.35 ft.

TRACT A MONUMENTS AND ACCESSORIES

All bearing trees are marked X BT

MONUMENT	DEPTH IN INCHES	TREE DIAMETER IN INCHES & TYPE	BEARINGS IN DEGREES				DISTANCE IN FEET
			NE	SE	SW	NW	
MC1 B1	23	10 CEDAR		72 1/4			28.2
				36 3/4			34.1
MC2 B1	23	16 CEDAR			86 1/2		46.1
						44	36.0
C2 B2	26	7 CEDAR				62 1/2	61.8
				23 1/2			26.1
C3 B2	24	8 HEMLOCK		38			13.8
					22 3/4		17.7
MC4 B2	23	6 SPRUCE		57 1/4			30.4
				72 1/2			17.3

TRACT B MONUMENT ACCESSORY INFORMATION

All bearing trees are marked X BT
Accessory magnets are in color coded plastic cases and buried in the ground.

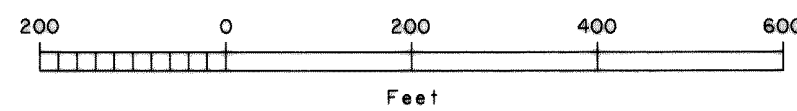
MONUMENT	DEPTH IN INCHES	TREE DIAMETER IN INCHES & TYPE	MAGNET COLOR & DEPTH IN INCHES	BEARINGS IN DEGREES				DISTANCE IN FEET
				NE	SE	SW	NW	
C1B1B2B3	12	17 SPRUCE					2	21.6
					66 1/4			73.2
C2B1C2B3	26	15 SPRUCE			52 1/2			12.9
						51 1/2		36.8
C3B1B2	27	34 CEDAR			89 1/2			28.6
						33 1/2		5.0
C4B1C2B2	26	20 SPRUCE	SILVER 12	45				10.0
			ORANGE 12				45	10.0
C3B3	24	6 HEMLOCK		74 1/4				38.6
					53 3/4			94.7

CURVE TABLE

Curve	Radius	Arc Length	Chord Bearing	Long Chord
ⓐ	1211.92	256.29	S. 39° 34' E.	255.81
ⓑ	1079.92	138.20	S. 41° 57' E.	138.11

LEGEND

- Stainless steel post, 2 1/2 ins. diam., 28 ins. long, with brass cap mkd. SSI ANCSA 14C 1993 and with the appropriate cor. Nos., tract letter, block Nos., tract lines, and right-of-way descriptors. Meander corners have additional marks MC. Refer to Monument and Accessories table for accessories established at each corner. Bury a magnet in a white plastic case at the base of each stainless steel post as a memorial.
- ⓐ Bureau of Land Management monument recovered this survey.
- ⓑ Recovered alum. post, 3 ins. diam., firmly set, projecting 6 ins. above the ground, with alum. cap mkd. 6992-LS SS 1992, and with the appropriate lot and block Nos., lot lines, and right-of-way descriptors.



KETCHIKAN 95-57

ALASKA NATIVE CLAIMS SETTLEMENT ACT
(ANCSA) SECTION 14 (C) TRACTS A THROUGH M
P.L. 92-203 (85 STAT. 688, 702, 703)

SHAAN-SEET, INCORPORATED

AT
CRAIG, ALASKA

REFERENCE SHOULD BE MADE
TO
SHEET No. 1
FOR SURVEY INFORMATION

LEGEND

- Stainless steel post, 2 1/2 ins. diam., 28 ins. long, with brass cap mkd. SSI ANCSA 14C 1993 and with the appropriate cor. Nos., tract letter, block Nos., tract lines, and right-of-way descriptors. Meander corners have additional marks MC. Witness corners have additional marks WC and an arrow pointing to the true corner. Refer to Monument and Accessories table for accessories established at each corner. Bury a magnet in a white plastic case at the base of each stainless steel post as a memorial.
- ⊠ A wooden post, 4 x 4 ins., firmly set, projecting 10 ins. above the ground, with a 2 ins. diam. brass disc affixed to the top, mkd. ALASKA DEPT OF HWY ROW 1976. No record of these monuments was found.
- ⊙ Bureau of Land Management or General Land Office monument found this survey.

NOTE

The true point for cor. No. 3 tract M falls in a dry creek bed unsuitable for monumentation.
The true point for cor. No. 2 tract C falls on a large stump unsuitable for monumentation.
The off-line witness cor. to meander cor. No. 1 tract D, was set on the right-of-way line of the Craig-Klawock Highway.
See sheet No. 2 for information pertaining to the recovery of the Craig-Klawock Highway right-of-way.

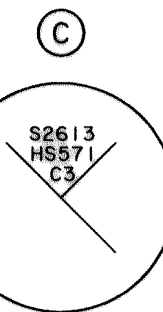
CURVE TABLE

Curve	Radius	Arc Length	Chord Bearing	Long Chord
③	1763.14	82.08	N. 23°02' W.	82.07
④	1703.14	315.54	N. 16°23' W.	315.09
⑤	1557.14	52.96	N. 14°20' W.	52.96
⑥	1571.14	1227.22	N. 9°01' E.	1196.26
⑦	1703.14	200.30	N. 34°58' E.	200.18

TRACT D MONUMENTS AND ACCESSORIES

All bearing trees are marked X BT.
Accessory magnets are in color coded plastic cases and buried in the ground

MONUMENT	DEPTH IN INCHES	TREE DIAMETER IN INCHES & TYPE	MAGNET COLOR & DEPTH IN INCHES	BEARINGS IN DEGREES				DISTANCE IN FEET
				NE	SE	SW	NW	
WC1	24	12 HEMLOCK				10 1/2		52.5
		6 SPRUCE				73 1/2		28.6
C2	27		SILVER 12	45				10.0
			ORANGE 12				45	10.0
MC3	25	21 CEDAR		61				81.6
		13 HEMLOCK				5 1/2		63.5

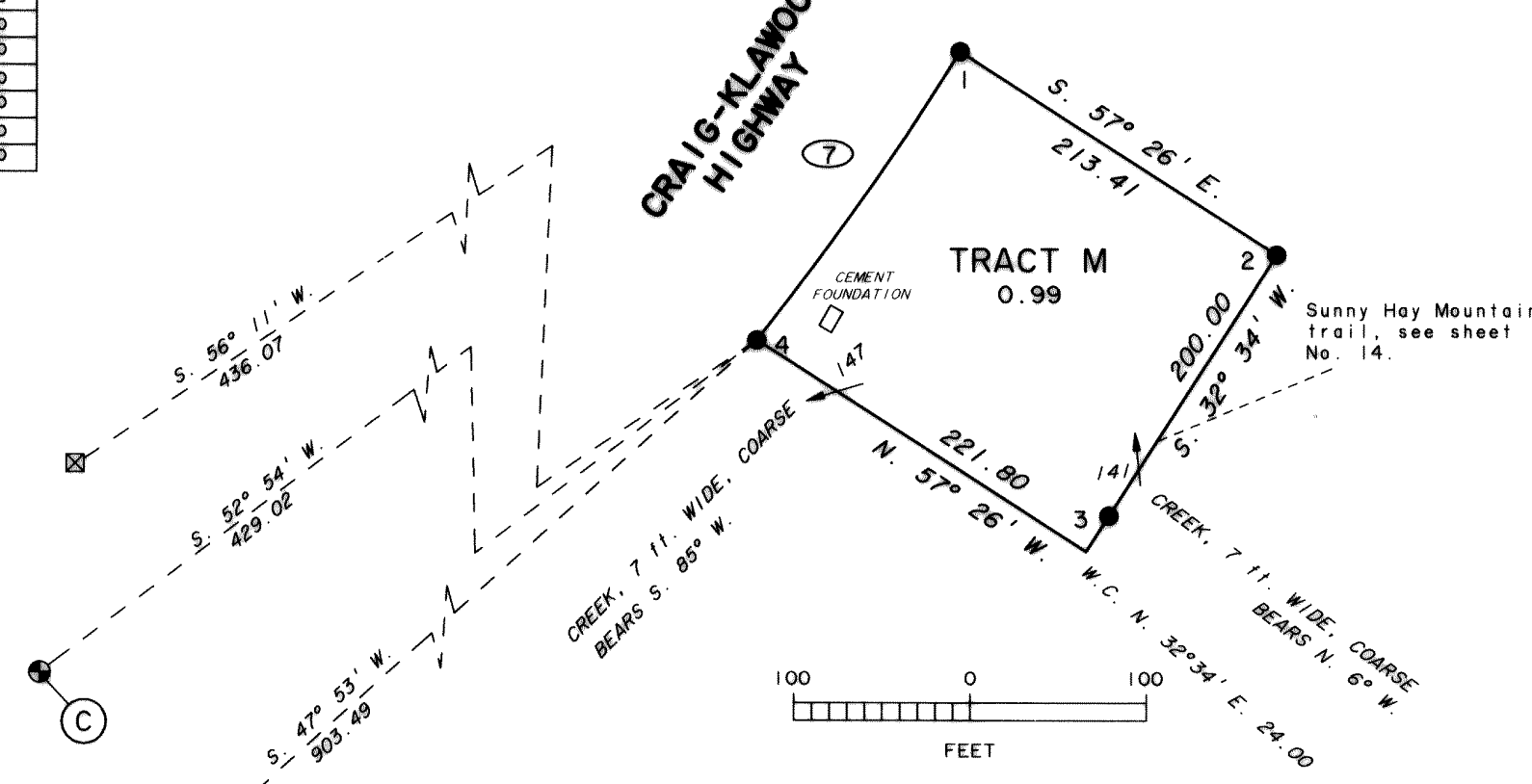


Recovered a General Land Office survey monument, a 1 in. diam. post, firmly set, projecting 8 ins. above the ground with a 2 1/2 ins. diam. brass cap mkd. as shown.
No accessories were found.

IMPROVEMENTS

From cor. 4 Tract M, the most westerly corner of a 12' x 20' cement foundation bears N. 71° 50' E., 50.4 ft. dist., long side bears N. 30° E.

CRAIG-KLAWOCK HIGHWAY



DETAIL A

TRACT D MEANDERS

Along the beach at the line of mean high tide.

1.	N. 37°32' E.	76.86 ft.
2.	N. 14°52' E.	143.63 ft.
3.	N. 31°19' E.	129.15 ft.
4.	N. 9°52' E.	175.20 ft.
5.	N. 4°59' W.	64.98 ft.
6.	N. 14°16' E.	177.32 ft.
7.	N. 15°14' E.	209.96 ft.
8.	S. 85°30' E.	92.48 ft.
9.	N. 68°49' E.	106.91 ft.
10.	N. 54°37' E.	70.30 ft.

At end of course, begin along the east bank of Crab Creek.

TRACT C MONUMENTS AND ACCESSORIES

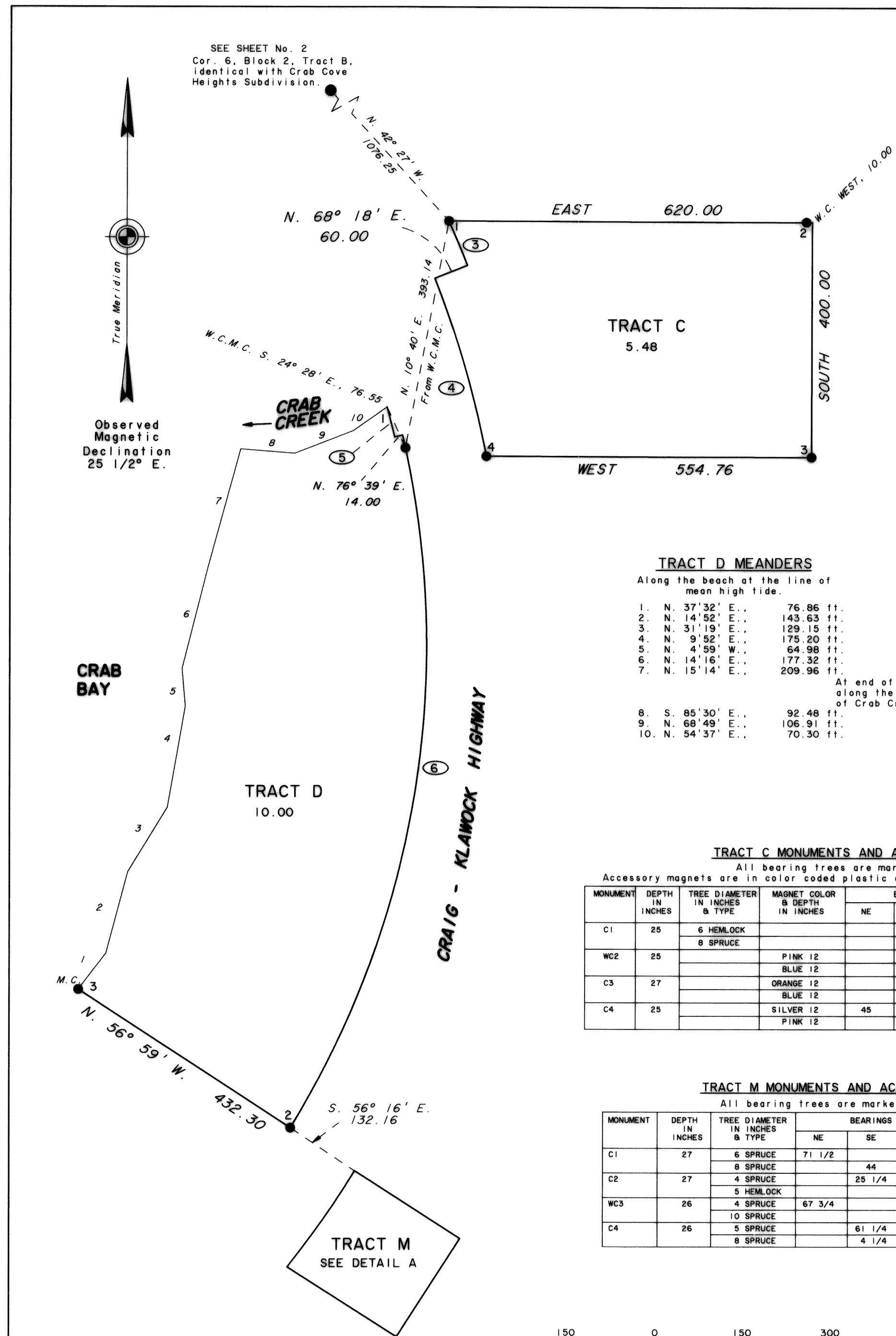
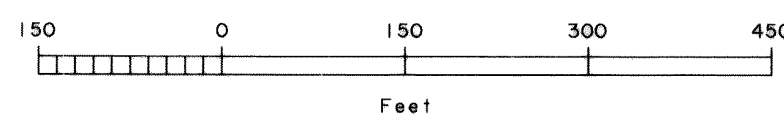
All bearing trees are marked X BT.
Accessory magnets are in color coded plastic cases and buried in the ground

MONUMENT	DEPTH IN INCHES	TREE DIAMETER IN INCHES & TYPE	MAGNET COLOR & DEPTH IN INCHES	BEARINGS IN DEGREES				DISTANCE IN FEET
				NE	SE	SW	NW	
C1	25	6 HEMLOCK			84 1/2			38.6
		8 SPRUCE					33	4.3
WC2	25		PINK 12		45			10.0
			BLUE 12			45		10.0
C3	27		ORANGE 12				45	10.0
			BLUE 12				45	10.0
C4	25		SILVER 12	45				10.0
			PINK 12		45			10.0

TRACT M MONUMENTS AND ACCESSORIES

All bearing trees are marked X BT.

MONUMENT	DEPTH IN INCHES	TREE DIAMETER IN INCHES & TYPE	BEARINGS IN DEGREES				DISTANCE IN FEET
			NE	SE	SW	NW	
C1	27	6 SPRUCE	71 1/2				18.0
		8 SPRUCE		44			32.8
C2	27	4 SPRUCE		25 1/4			26.4
		5 HEMLOCK				65 1/4	46.5
WC3	26	4 SPRUCE	67 3/4				33.0
		10 SPRUCE				77	44.0
C4	26	5 SPRUCE		61 1/4			37.7
		8 SPRUCE		4 1/4			16.6



KETCHIKAN 95-57

ALASKA NATIVE CLAIMS SETTLEMENT ACT
(ANCSA) SECTION 14 (C) TRACTS A THROUGH M
P.L. 92-203 (85 STAT. 688, 702, 703)

SHAAN-SEET, INCORPORATED
AT
CRAIG, ALASKA

REFERENCE SHOULD BE MADE
TO
SHEET No. 1
FOR SURVEY INFORMATION

HISTORY OF SURVEYS

Portions of the North and East boundaries of Township 74 South, Range 81 East, Copper River Meridian, Alaska, were surveyed by Malcolm A. Menzies, Alaska Registered Land Surveyor No. 1410, in 1976 and 1977.

The exterior boundary and a portion of the subdivisional lines of Section 11, Township 74 South, Range 82 East, Copper River Meridian, were surveyed in 1993 by Timothy A. Quincy, Cadastral Surveyor, under Special Instructions for Group No. 598, Alaska.

U.S. Survey No. 3857 was surveyed by Walter W. Cooley, Supervisory Cadastral Surveyor, in 1961.

Alaska State Land Survey No. 74-153, subdividing U.S. Survey No. 3857, Lot 2, was compiled by the State of Alaska, Department of Natural Resources, Division of Lands, in 1974.

An unrecorded resurvey of Lot 2B, U.S. Survey No. 3857, was executed in 1985 by Noel F. Stragier, Alaska Registered Land Surveyor No. 3337, for the City of Craig, Alaska.

U.S. Survey Nos. 2611 and 2613 were surveyed by F.W. Williamson, Associate Cadastral Engineer, G.L.O., in 1942.

Tract A, Crab Cove Heights was surveyed in 1992 by Paul D. Whipple, Alaska Registered Land Surveyor No. 6992, and recorded in the Ketchikan Recording District, Plat No. 93-7, on March 23, 1993.

Crab Cove Heights Subdivision was surveyed in 1993 by Paul D. Whipple, Alaska Registered Land Surveyor No. 6992, and recorded in the Ketchikan Recording District, Plat No. 94-14, on April 12, 1994.

Port St. Nicholas Subdivision was surveyed in 1983 by Douglas G. Minton, Alaska Registered Land Surveyor No. 5761, and recorded in the Ketchikan Recording District, Plat No. 83-65, on November 17, 1983.

Lots 4A and 5A, Port St. Nicholas Subdivision, a re-subdivision of lots 4 and 5, Port St. Nicholas Subdivision, was surveyed in 1992 by Craig L. Templin, Alaska Registered Land Surveyor No. 3491, and recorded in the Ketchikan Recording District, Plat No. 92-40, on September 11, 1992.

Craig WTP Subdivision, a subdivision of Lots 2 and 3, Port St. Nicholas Subdivision, was surveyed in 1991 by Rick G. Braun, Alaska Registered Land Surveyor No. 5781, and recorded in the Ketchikan Recording District, Plat No. 91-35, on July 8, 1991.

An unrecorded resurvey of Lot 10, Port St. Nicholas Subdivision, was executed in 1992 by Gregory G. Scheff, Alaska Registered Land Surveyor No. 6700, for the City of Craig, Alaska.

The Craig-Klawock Highway was surveyed by the State of Alaska, Department of Highways project S-0924 (5) in 1971 and recorded in the Ketchikan Recording District, Plat No. 80-2, on January 9, 1980.

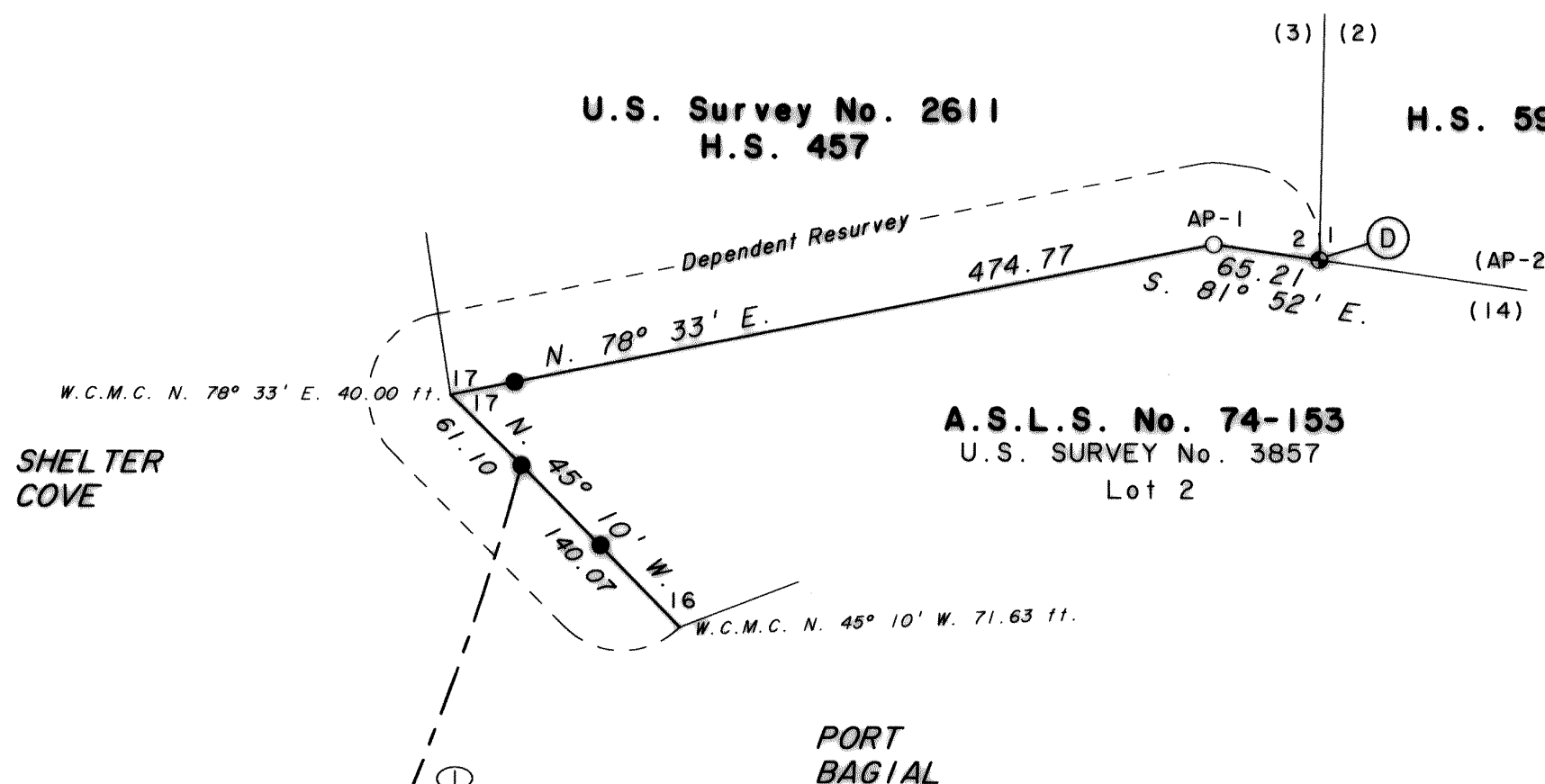
The Craig Cemetery Site was surveyed by George C. Sawyer on March 28, 1939, for the U. S. Forest Service. This survey is described in Executive Order No. 8779, filed in the Federal Register document No. 41-4207 on June 12, 1941. An unrecorded plat of the reestablishment of the Craig Cemetery site was done by Earl L. Fosse, Alaska Registered Land Surveyor No. 3408, in 1982 and is on file with the City of Craig, Alaska.

NOTES

The Cemetery Island Road consists of a 60 ft. wide right-of-way, 30 ft. on either side of the platted centerline. This road was surveyed along the apparent centerline of the existing roadbed and monumented accordingly.

The witness corner to meander corner No. 16, Lot 2, U.S. Survey No. 3857, was re-established from the recovered original northwest bearing tree. The original witness corner to meander corner No. 16 and the northeast bearing tree are obliterated. The new witness corner to meander corner No. 16 was established and the original northwest bearing tree was used as an accessory.

The recovered witness corner to corner No. 17, Lot 2, U.S. Survey No. 3857, identical to the witness corner to corner No. 1, H.S. 457, U.S. Survey No. 2611, both meander corners, was established by Noel F. Stragier, Alaska Registered Land Surveyor No. 3337, for an unrecorded resurvey of Lot 2B, U.S. Survey No. 3857 in 1985. The recovered witness corner was a 5/8 in. rebar without an aluminum cap, firmly set, 6 ins. below ground, at a witness distance of 40 ft. This witness corner is harmoniously related to other existing original corners and is accepted as the best available evidence of the original corner position. This witness corner was re-monumented with a stainless steel post, 2 1/2 ins. diam., 28 ins. long. Refer to Monument and Accessory Table.



LEGEND

- Stainless steel post, 2 1/2 ins. diam., 28 ins. long, with brass cap mkd. SSI ANCSA 14C 1993 and with the appropriate cor. Nos., tract letter, tract lines, and curve designations. Witness corners have additional marks WC and an arrow pointing to the true corner. Refer to Monument and Accessories table for accessories established at each corner. Bury a magnet in a white plastic case at the base of each stainless steel post as a memorial.
- ⊙ Bureau of Land Management or General Land Office monument found this survey.
- Recovered a 5/8 in. diam rebar, firmly set, projecting 6 ins. above the ground, with alum cap mkd. PROP CORNER HS 457 ROW 3337-S.

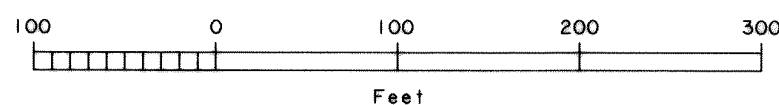
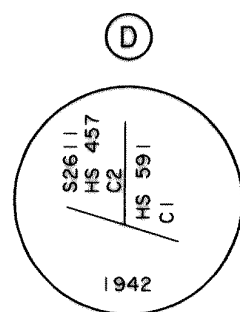
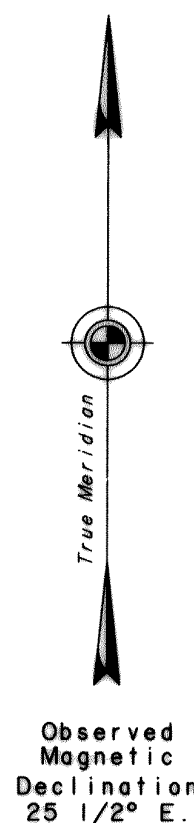
CURVE DATA

Curve	Radius	Arc Length	Chord Bearing	Long Chord
①	1700.00	457.45	S. 22° 39' W.	456.07
②	398.00	240.36	S. 13° 04' W.	236.72

CEMETERY ISLAND ROAD MONUMENTS AND ACCESSORIES

All bearing trees are marked X BT.
Accessory magnets are in color coded plastic cases and buried in the ground

MONUMENT	DEPTH IN INCHES	TREE DIAMETER IN INCHES & TYPE	MAGNET COLOR & DEPTH IN INCHES	BEARINGS IN DEGREES				DISTANCE IN FEET
				NE	SE	SW	NW	
INTERSEC. CEM. & G	40		PINK 12 BLUE 12		45		45	15.0 15.0
PT 1	40		NO ACCESSORIES					
PC 2	40		NO ACCESSORIES					
PT 2	40		SILVER 12 PINK 12	45				15.0 15.0
INTERSEC. USS 3857	40		PINK 12 BLUE 12		45		45	15.0 15.0
WC 16 S3857	40	9 SPRUCE 48 SPRUCE		48		1/2		73.4 18.6
WC 17 S3857	40	UTILITY SUPPORT POLE W/6" SPIKE DRIVEN 5 1/2" INTO NORTH FACE MKD 93		85 1/2				42.5
		UTILITY SUPPORT POLE W/6" SPIKE DRIVEN 5 1/2" INTO SOUTH FACE MKD 93			55 1/2			13.3

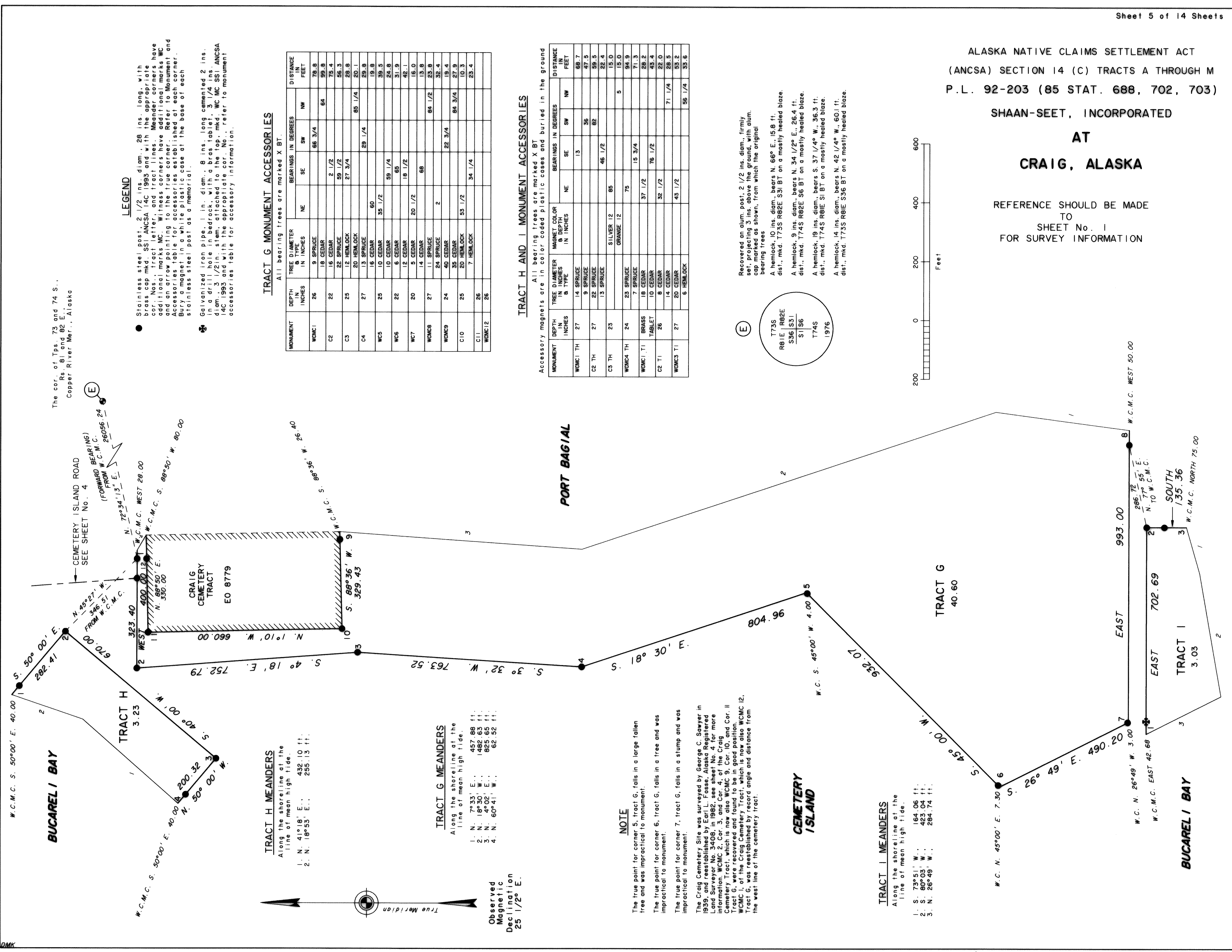
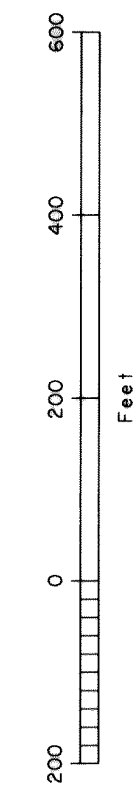


ALASKA NATIVE CLAIMS SETTLEMENT ACT
(ANCSA) SECTION 14 (C) TRACTS A THROUGH M
P.L. 92-203 (85 STAT. 688, 702, 703)

SHAAN-SEET, INCORPORATED

AT
CRAIG, ALASKA

REFERENCE SHOULD BE MADE
TO
SHEET No. 1
FOR SURVEY INFORMATION



LEGEND

- Stainless steel post, 2 1/2 ins. diam., 28 ins. long, with brass cap mkd. SSI-ANCSA 14C 1983 and with the appropriate cor. Nos., Tract letter, and tract lines. Meander corners have additional marks C. Witness corners have additional marks WC. Accessories table for accessories established at each corner. Bury a magnet in a white plastic case at the base of each stainless steel post as a memorial.
- ⊕ Galvanized iron pipe, 1 in. diam., 8 ins. long cemented 2 ins. in a drilled bedrock with a brass tablet, WC No. ANCSA 14C 1983 and with the appropriate cor. No. Refer to monument accessories table for accessory information.

TRACT H MEANDERS

- Along the shoreline at the line of mean high tide.
1. N. 41°18' E. 432.10 ft.
 2. N. 18°53' E. 255.13 ft.

TRACT G MEANDERS

- Along the shoreline at the line of mean high tide.
1. N. 7°33' E. 457.88 ft.
 2. N. 18°30' W. 1482.63 ft.
 3. N. 4°02' E. 825.65 ft.
 4. N. 60°41' W. 62.52 ft.

NOTE

The true point for corner 5, tract G, falls in a large fallen tree and was impractical to monument.
The true point for corner 6, tract G, falls in a tree and was impractical to monument.
The true point for corner 7, tract G, falls in a stump and was impractical to monument.

The Craig Cemetery Site was surveyed by George C. Sawyer in 1939, and reestablished by Earl L. Fosse, Alaska Registered Land Surveyor, No. 34006, in 1982; see sheet No. 4 for more details. The site also includes the "Craig Island and Cor. II Cemetery Tract," which is now also WCMC 9, Cor. 10 and Cor. II Tract G, were recovered and found to be in good position. WCMC I, of the Craig Cemetery Tract, which is now also WCMC 12, Tract G, was reestablished by record angle and distance from the west line of the cemetery tract.

TRACT G MONUMENT ACCESSORIES

All bearing trees are marked X BT.

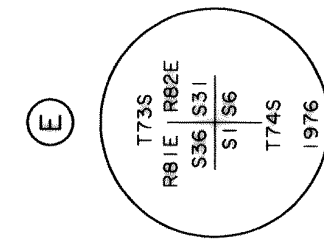
MONUMENT	DEPTH IN INCHES	TREE DIAMETER IN INCHES	TREE TYPE	BEARINGS IN DEGREES				DISTANCE IN FEET
				NE	SE	SW	NW	
WCMC1	26	9 SPRUCE			65 3/4			76.8
C2	22	16 CEDAR		2 1/2			64	99.8
C3	25	22 SPRUCE		59 1/2				75.4
C4	27	20 HEMLOCK		27 3/4				56.3
WC5	25	13 SPRUCE			89 1/4		85 1/4	20.1
WC6	22	10 CEDAR		35 1/2				19.8
WC7	20	6 CEDAR		65				39.5
WCMC8	27	14 CEDAR		18 1/2				24.8
WCMC9	24	5 CEDAR		20 1/2				16.0
C10	25	11 SPRUCE		68				13.8
C11	26	24 CEDAR		2				32.4
WCMC12	26	35 CEDAR		53 1/2			84 1/2	19.4
		7 HEMLOCK		34 1/4				27.9
								10.3
								23.4

TRACT H AND I MONUMENT ACCESSORIES

All bearing trees are marked X BT

Accessory magnets are in color coded plastic cases and buried in the ground

MONUMENT	DEPTH IN INCHES	TREE DIAMETER IN INCHES	TREE TYPE	MAGNET COLOR & DEPTH IN INCHES	BEARINGS IN DEGREES				DISTANCE IN FEET
					NE	SE	SW	NW	
WCMC1 TH	27	14 SPRUCE			13				68.7
C2 TH	27	9 SPRUCE				36			47.5
C3 TH	23	13 SPRUCE		SILVER 12		46 1/2		82	59.5
WCMC4 TH	24	23 SPRUCE		ORANGE 12					22.4
WCMC5 TH	24	7 SPRUCE							15.0
WCMC6 TH	26	18 CEDAR							5
C2 T1	26	10 CEDAR							94.9
WCMC3 T1	27	14 CEDAR							71.3
		6 HEMLOCK							28.2
									42.4
									22.0
									71 1/4
									28.5
									51.2
									55.2
									35.6



- Recovered an alum. post, 2 1/2 ins. diam., firmly set, projecting 3 ins. above the ground, with alum. cap marked as shown, from which the original bearing trees
- A hemlock, 10 ins. diam., bears N. 66° E., 15.8 ft. dist., mkd. T735 R82E S31 BT on a mostly healed blaze.
- A hemlock, 9 ins. diam., bears N. 34 1/2° E., 26.4 ft. dist., mkd. T745 R82E S6 BT on a mostly healed blaze.
- A hemlock, 19 ins. diam., bears S. 37 1/4° W., 36.3 ft. dist., mkd. T745 R81E S1 BT on a mostly healed blaze.
- A hemlock, 14 ins. diam., bears N. 42 1/4° W., 60.1 ft. dist., mkd. T735 R81E S36 BT on a mostly healed blaze.

TRACT I MEANDERS

- Along the shoreline at the line of mean high tide.
1. S. 73°51' W. 164.06 ft.
 2. S. 80°03' W. 423.04 ft.
 3. N. 26°49' W. 284.74 ft.

KETCHIKAN 95-57

ALASKA NATIVE CLAIMS SETTLEMENT ACT
(ANCSA) SECTION 14 (C) TRACTS A THROUGH M
P.L. 92-203 (85 STAT. 688, 702, 703)

SHAAN-SEET, INCORPORATED

AT
CRAIG, ALASKA

REFERENCE SHOULD BE MADE
TO
SHEET No. 1
FOR SURVEY INFORMATION

CURVE DATA

Curve	Radius	Arc Length	Chord Bearing	Long Chord
(2L)	2030.00	151.24	N. 12°07' E.	151.21
(3L)	570.00	302.48	N. 0°57' W.	298.84
(4L)	3625.00	540.39	S. 23°31' E.	539.30

TRACT F MONUMENTS AND ACCESSORIES

All bearing trees are marked X BT, all bearing objects are marked X BO. Accessory magnets are in color coded plastic cases and buried in the ground.

MONUMENT	DEPTH INCHES	TREE/ROCK DESCRIPTION	MAGNET COLOR IN INCHES	BEARINGS IN DEGREES				DISTANCE IN FEET
				NE	SE	SW	NW	
MC1	BRASS TABLET	16" HEMLOCK	7"	75 3/4				58.0
C2	27	7" CEDAR	SILVER 12	45			11 1/4	28.3
C3	BRASS TABLET	8X8X8 ROCK	ORANGE 12				45	7.0
MC4	BRASS TABLET	4X3X3 ROCK	ORANGE 12				34 1/2	11.0
		16" SPRUCE		28			71 3/4	13.6
		14" HEMLOCK		88				6.8
								32.0

NOTE

The Port St. Nicholas Road consists of a 60 ft. wide right-of-way, 30 ft. on either side of the platted centerline. This road was surveyed along the apparent centerline of the existing road (see accompanying plan). Refer to sheet No. 10 for centerline monument information.

From Cor. 1, Blk. 1, Tr. E, the monument for PRC 2-3, Port St. Nicholas Rd. bears S. 23° 25' W., 153.06 ft. dist.

From Cor. 3, Tr. E, the monument for PT 7, Port St. Nicholas Rd. bears N. 24° 50' W., 347.36 ft. dist.

The true point for Cor. 2, Blk. 1, Tr. E, falls in a large blown down tree and was impractical to monument.

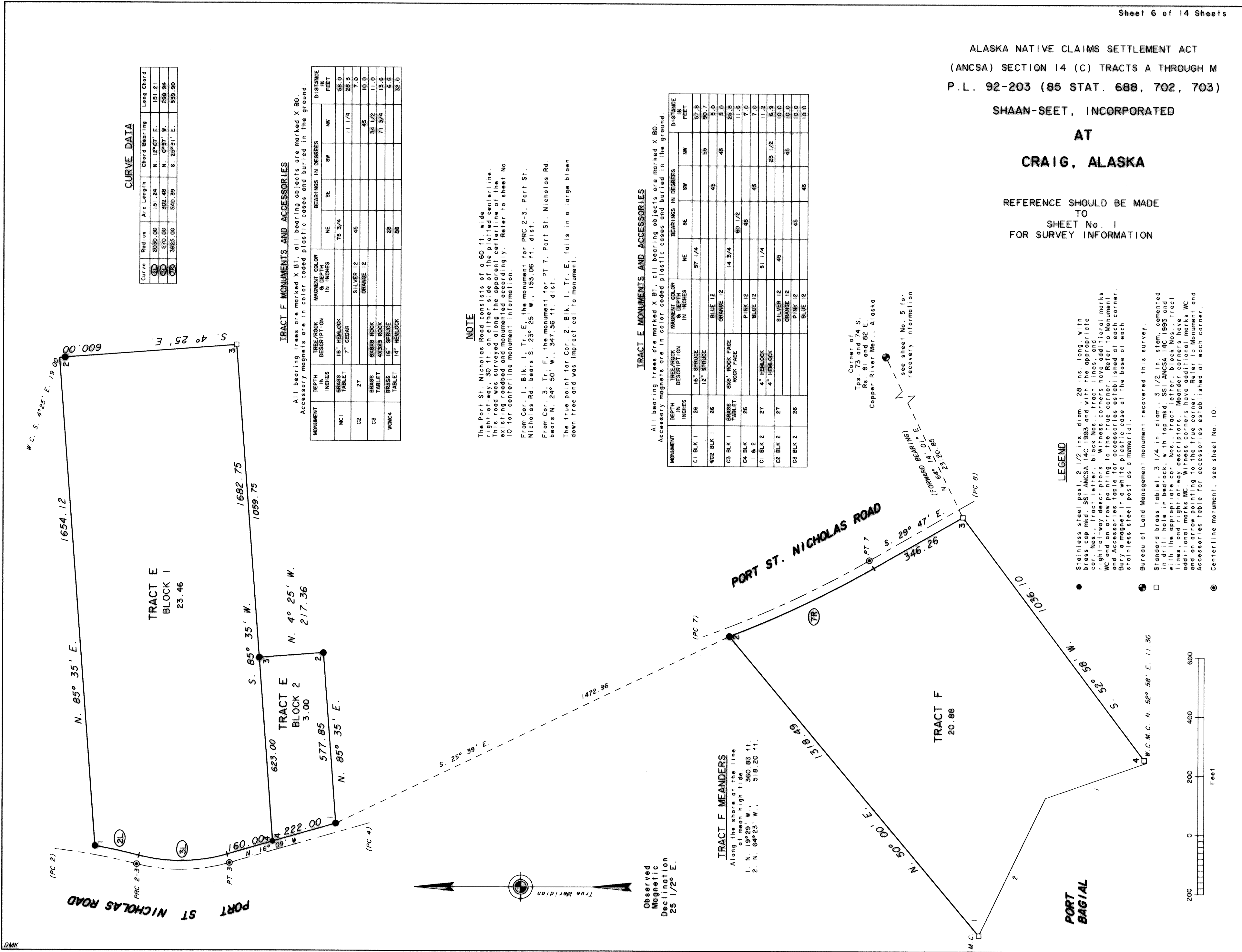
TRACT E MONUMENTS AND ACCESSORIES

All bearing trees are marked X BT, all bearing objects are marked X BO. Accessory magnets are in color coded plastic cases and buried in the ground.

MONUMENT	DEPTH INCHES	TREE/ROCK DESCRIPTION	MAGNET COLOR & DEPTH IN INCHES	BEARINGS IN DEGREES				DISTANCE IN FEET
				NE	SE	SW	NW	
C1 BLK 1	26	16" SPRUCE	BLUE 12	57 1/4				57.8
WC2 BLK 1	26	12" SPRUCE	ORANGE 12		45		55	90.7
C3 BLK 1	BRASS TABLET	8X8 ROCK FACE	ORANGE 12	14 3/4			45	5.0
C4 BLK 1 & 2	26	ROCK FACE	PINK 12	60 1/2				25.8
C1 BLK 2	27	4" HEMLOCK	BLUE 12		45			7.0
C2 BLK 2	27	4" HEMLOCK	SILVER 12	51 1/4			23 1/2	11.2
C3 BLK 2	26	16" SPRUCE	ORANGE 12		45		45	10.0
		14" HEMLOCK	BLUE 12					10.0

TRACT F MEANDERS

Along the shore at the line of mean high tide.
1. N. 19°25' W., 360.83 ft.
2. N. 64°23' W., 518.20 ft.



LEGEND

- Stainless steel post, 2 1/2 ins. diam., 28 ins. long, with brass cap mkd. SSI ANCSA 14C 1993 and with the appropriate cor. Nos., tract letter, block Nos., tract lines, and right-of-way descriptors. Witness corners have additional marks WC and an arrow pointing to the true corner. Refer to Monument Bury a magnet in a white plastic case at the base of each corner. Bury a magnet in a white plastic case at the base of each stainless steel post as a memorial.
- ⊙ Bureau of Land Management monument recovered this survey.
- Standard brass tablet, 3 1/4 in. diam., 3 1/2 in. stem, cemented with the appropriate cor. Nos. tract letter, block Nos., tract lines, and right-of-way descriptors. Meander corners have additional marks MC. Witness corners have additional marks WC and an arrow pointing to the true corner. Refer to Monument Bury a magnet in a white plastic case at the base of each corner. Bury a magnet in a white plastic case at the base of each stainless steel post as a memorial.
- ⊙ Centerline monument, see sheet No. 10.

KETCHIKAN 95-57

ALASKA NATIVE CLAIMS SETTLEMENT ACT (ANCSA) SECTION 14 (C) TRACTS A THROUGH M P.L. 92-203 (85 STAT. 688, 702, 703)

SHAAN-SEET, INCORPORATED AT CRAIG, ALASKA

AND THE DEPENDENT RESURVEY OF PORTIONS OF THE NORTH AND EAST BOUNDARIES AND SUBDIVISION OF PORTIONS OF TOWNSHIP 74 SOUTH, RANGE 81 EAST COPPER RIVER MERIDIAN

REFERENCE SHOULD BE MADE TO SHEET No. 1 FOR SURVEY INFORMATION

MONUMENTS AND ACCESSORIES table with columns for Monument, Depth, Tree/Rock Description, Magnet Color, Bearings, and Distance.

SEE SHEET No. 2 FOR RECOVERY INFORMATION

DEPENDENT RESURVEY

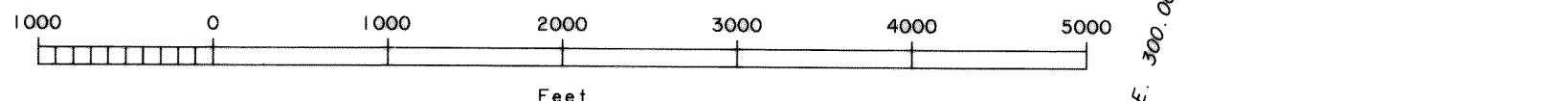
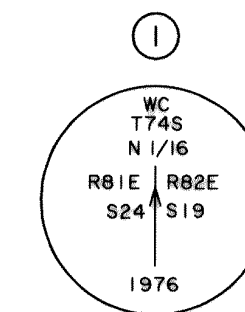
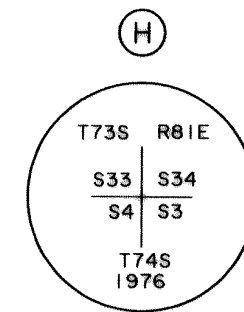
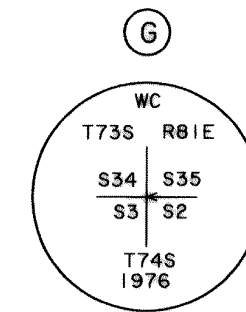
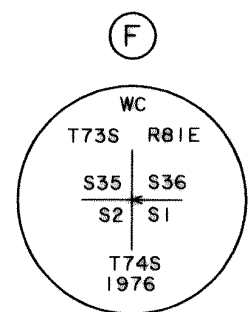
SEE SHEET No. 5 FOR RECOVERY INFORMATION

The Witness Cor. to Secs. 4, 5, 32, 33 Tps. 73 and 74 S., R. 81 E., Copper River Mer., Alaska.

The Cor. of Sec. 1, 6, 31, 36 Tps. 73 and 74 S., R. 81 and 82 E., Copper River Mer., Alaska

LEGEND

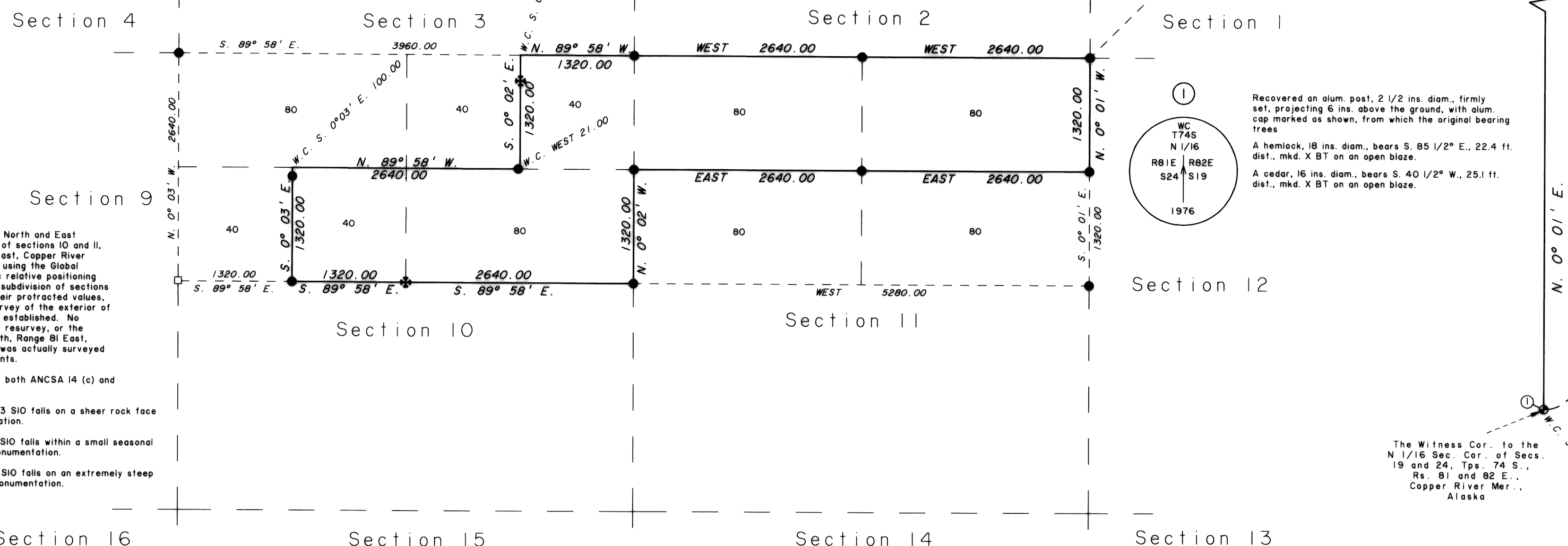
- Stainless steel post, 2 1/2 ins. diam., 28 ins. long, with brass cap mkd. SSI ANCSA 14C 1993... Bureau of Land Management monument... Galvanized iron pipe... Brass tablet...



Observed Magnetic Declination 25 1/2° E.

NOTE

The dependent resurvey of the North and East boundaries, and the subdivision of sections 10 and 11, Township 74 South, Range 81 East, Copper River Meridian, Alaska, was executed using the Global Positioning System... All monuments established have both ANCSA 14 (c) and Public Land Survey markings.



KETCHIKAN 95-57

ALASKA NATIVE CLAIMS SETTLEMENT ACT
(ANCSA) SECTION 14 (C) TRACTS A THROUGH M
P.L. 92-203 (85 STAT. 688, 702, 703)
SHAAN-SEET, INCORPORATED
AT
CRAIG, ALASKA

REFERENCE SHOULD BE MADE
TO
SHEET No. 1
FOR SURVEY INFORMATION

- LEGEND**
- Stainless steel post, 2 1/2 ins. diam., 28 ins. long, with brass cap mkd. SSI ANCSA 14C 1993 and with the appropriate cor. Nos., tract letter, tract lines, and right-of-way descriptors. Witness corners have additional marks WC and an arrow pointing to the true corner. Refer to Monument and Accessories table for accessories established at each corner. Bury a magnet in a white plastic case at the base of each stainless steel post as a memorial.
 - ⊕ Bureau of Land Management monument recovered this survey.
 - ⊙ Centerline monument, see sheet No. 11.
 - ◆ A rebar, 5/8 in. diam., 28 ins. long, with a 2 1/2 ins. diam. alum cap marked SSI ANCSA 14C 1993 and with the appropriate angle point Nos., tract letter, and tract lines.
 - Recovered 5/8 in. rebar, firmly set, projecting 6 ins. above the ground, with alum. cap marked with the appropriate Lot Nos. and Lot lines.

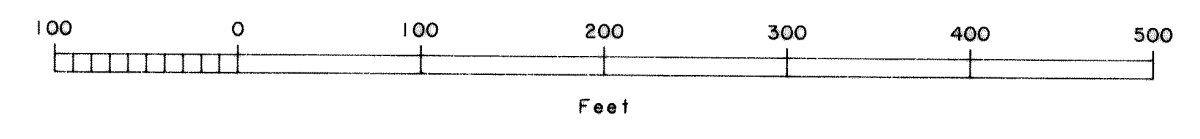
True Meridian
Observed Magnetic Declination 25 1/2° E.

CURVE DATA

Curve	Radius	Arc Length	Chord Bearing	Long Chord
35LA	270.00	14.46	S. 79°13' E.	14.46
35LB	270.00	98.67	N. 80°36' E.	98.12

TRACT J MONUMENTS AND ACCESSORIES
All bearing trees are marked X BT.

MONUMENT	DEPTH IN INCHES	TREE DIAMETER IN INCHES & TYPE	BEARINGS IN DEGREES				DISTANCE IN FEET
			NE	SE	SW	NW	
C2	26	7 HEMLOCK			28 3/4		33.1
C3	27	16 HEMLOCK				35 1/4	14.8
		15 SPRUCE	82 1/2				45.1
C4	28	13 BIRCH		37 3/4			19.6
		POWER POLE		4 1/4			54.6
		12 ALDER	6 1/4				20.7



NOTE

The Port St. Nicholas Road consists of a 60 ft. wide right-of-way, 30 ft. on either side of the platted centerline. This road was surveyed along the apparent centerline of the existing roadbed and monumented accordingly. Refer to sheet No. 11 for centerline monument information.

The survey of Port St. Nicholas Road through Port St. Nicholas Subdivision is based upon the road easement filed in the Ketchikan Recording District on August 14, 1984, book 124, pages 670 through 675.

Line 3-4, Tract J, was surveyed as a 50 ft. offset to the east from the apparent centerline of Dog Salmon Creek. This line is a non-riparian, fixed and limiting boundary.

The northwesterly corner of Lot 1, Port St. Nicholas Subdivision, identical to the northeasterly corner of Lot 2A, Craig WTP Subdivision, is designated as corner No. 1, Tract J, of this ANCSA 14 (c) survey with no marks added to the alum. cap.

The southerly boundary of Tract J is coincident with a portion of Port St. Nicholas Subdivision. Lost corners of this portion of the subdivision were computed by Grant Boundary Adjustment methods. The lost corners were not re-established, and no marks were added to the existing private survey monuments.

KETCHIKAN 95-57

TRACT K MONUMENTS AND ACCESSORIES

All bearing trees are marked X BT.

MONUMENT	DEPTH IN INCHES	TREE DIAMETER IN INCHES & TYPE	BEARINGS IN DEGREES				DISTANCE IN FEET
			NE	SE	SW	NW	
WC1	25	16 HEMLOCK	79 3/4				10.6
		13 HEMLOCK			31		22.7
WC2	23	18 HEMLOCK	52 1/4				30.2
		9 HEMLOCK				36	19.1
WC3	25	13 SPRUCE	20 1/2				11.2
		16 SPRUCE		35			21.8
WC4	24	14 HEMLOCK	2				25.8
		17 HEMLOCK			60		54.4

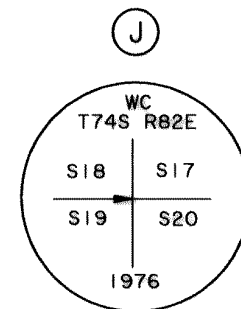
NOTE

The Port St. Nicholas Road consists of a 60 ft. wide right-of-way, 30 ft. on either side of the platted centerline. This road was surveyed along the apparent centerline of the existing roadbed and monumented accordingly. Refer to sheet No. 12 for centerline monument information.

Line 1-2, Tract K, is coincident with a portion of the protracted section line between sections 17 and 18, Township 74 South, Range 82 East, Copper River Meridian, Alaska. This position is based upon the computed values obtained from the depicted ties to existing rectangular corners. Only this portion of the rectangular section line was surveyed. No other portions of sections 17 or 18 have been surveyed as of the date of this survey's approval.

Corner No. 2, Tract K, falls on a steep and unstable slope along the side of Port St. Nicholas Road and is impractical to monument.

Corner No. 3, Tract K, falls under a large pile of logs and is impractical to monument.



- Recovered an alum. post, 2 1/2 ins. diam., firmly set, projecting 5 ins. above the ground with alum. cap mkd. as shown, from which the original bearing trees
- A hemlock stump, 18 ins. diam., bears N. 16 1/2° E., 25.1 ft. dist., mkd. X BT.
- A fallen hemlock, 28 ins. diam., bears S. 25 1/2° E., 49.5 ft. dist., mkd X BT.
- A fallen hemlock, 14 ins. diam., bears S. 69 1/2° W., 69.3 ft. dist., mkd X BT.
- A cedar stump, 24 ins. diam., bears N. 20° W., 33.0 ft. dist., with scribe marks visible on a partially headed blaze.
- A hemlock, 24 ins. diam., bears N. 66° E., 48.2 ft. dist., mkd X BT. (not in the original field notes)
- A hemlock, 6 ins. diam., bears S. 14° W., 33.7 ft. dist., mkd X BT. (not in the original field notes)

ALASKA NATIVE CLAIMS SETTLEMENT ACT
(ANCSA) SECTION 14 (C) TRACTS A THROUGH M
P.L. 92-203 (85 STAT. 688, 702, 703)

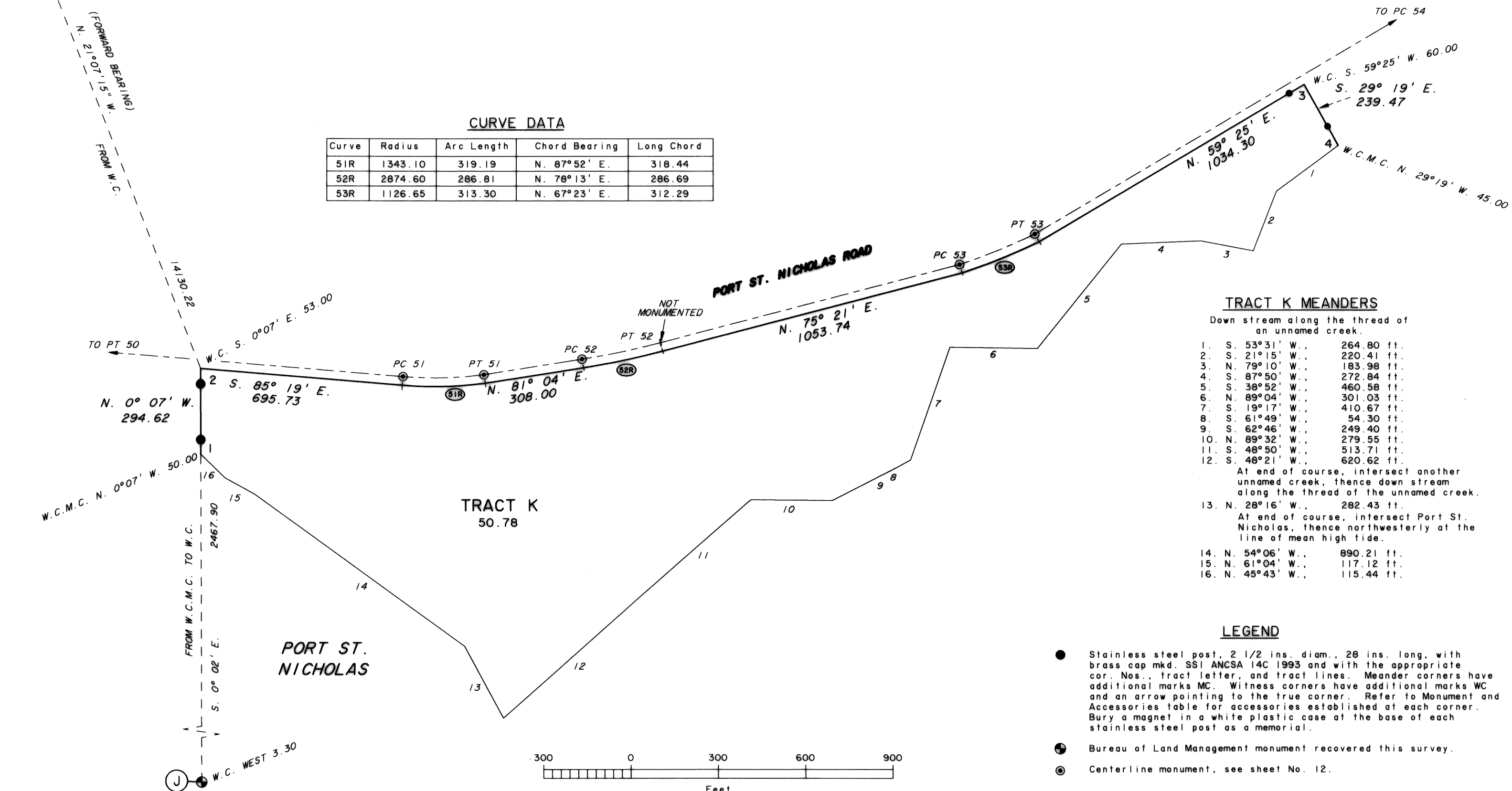
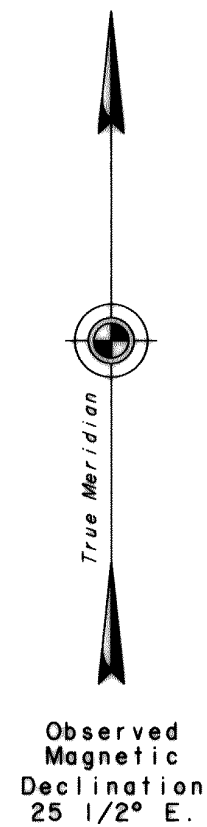
SHAAN-SEET, INCORPORATED
AT
CRAIG, ALASKA

REFERENCE SHOULD BE MADE
TO
SHEET No. 1
FOR SURVEY INFORMATION

THE CORNER OF TPS. 73 AND 74 S., RS. 81 AND 82 E., COPPER RIVER MERIDIAN, ALASKA. SEE SHEET No. 5 FOR RECOVERY INFORMATION.

CURVE DATA

Curve	Radius	Arc Length	Chord Bearing	Long Chord
51R	1343.10	319.19	N. 87°52' E.	318.44
52R	2874.60	286.81	N. 78°13' E.	286.69
53R	1126.65	313.30	N. 67°23' E.	312.29



TRACT K MEANDERS

Down stream along the thread of an unnamed creek.

- S. 53°31' W., 264.80 ft.
- S. 21°15' W., 220.41 ft.
- N. 79°10' W., 183.98 ft.
- S. 87°50' W., 272.84 ft.
- S. 38°52' W., 460.58 ft.
- N. 89°04' W., 301.03 ft.
- S. 19°17' W., 410.67 ft.
- S. 61°49' W., 54.30 ft.
- S. 62°46' W., 249.40 ft.
- N. 89°32' W., 279.55 ft.
- S. 48°50' W., 513.71 ft.
- S. 48°21' W., 620.62 ft.

At end of course, intersect another unnamed creek, thence down stream along the thread of the unnamed creek.

- N. 28°16' W., 282.43 ft.

At end of course, intersect Port St. Nicholas, thence northwesterly at the line of mean high tide.

- N. 54°06' W., 890.21 ft.
- N. 61°04' W., 117.12 ft.
- N. 45°43' W., 115.44 ft.

LEGEND

- Stainless steel post, 2 1/2 ins. diam., 28 ins. long, with brass cap mkd. SSI ANCSA 14C 1993 and with the appropriate cor. Nos., tract letter, and tract lines. Meander corners have additional marks MC. Witness corners have additional marks WC and an arrow pointing to the true corner. Refer to Monument and Accessories table for accessories established at each corner. Bury a magnet in a white plastic case at the base of each stainless steel post as a memorial.
- Bureau of Land Management monument recovered this survey.
- Centerline monument, see sheet No. 12.

KETCHIKAN 95-57

NOTE

The Port St. Nicholas Road consists of a 60 ft. wide right-of-way, 30 ft. on either side of the platted centerline. This road was surveyed along the apparent centerline of the existing roadbed and monumented accordingly.

The Craig-Klawock Highway was surveyed by the State of Alaska, Department of Highways project S-0924 (5) in 1971 and recorded in the Ketchikan Recording District, Plat No. 80-2, on January 9, 1980. Subsequent construction for this project destroyed all centerline monumentation in this area. Refer to item No. 3 in the note on the plat of Tract A, Crab Cove Heights, Plat No. 93-7. The 132 ft. wide right-of-way, 66 ft. on either side of centerline, was reconstructed based upon the existing paved roadway, the recovered right-of-way monumentation from Tract A, Crab Cove Heights, Plat No. 93-7, U. S. Survey No. 2613, and unrecorded right-of-way monumentation.

Ⓒ Cor. No. 3, U.S.S. 2613, see sheet No. 3 for recovery information.

Recovered a copper rod, 3/4 in. diam., firmly set, with a brass cap mkd. "K5", set by the Dept. of Transportation inside a monument box on the east shoulder of the Craig-Klawock Highway.

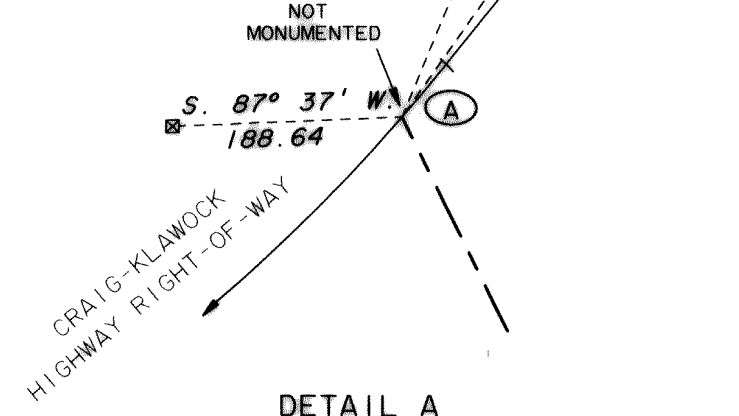
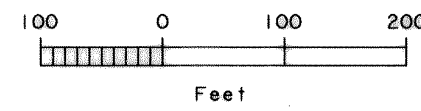
ALASKA NATIVE CLAIMS SETTLEMENT ACT
(ANCSA) SECTION 14 (C) TRACTS A THROUGH M
P.L. 92-203 (85 STAT. 688, 702, 703)

SHAAN-SEET, INCORPORATED

CRAIG, ALASKA

PORT ST. NICHOLAS ROAD

REFERENCE SHOULD BE MADE TO
SHEET No. 1
FOR SURVEY INFORMATION



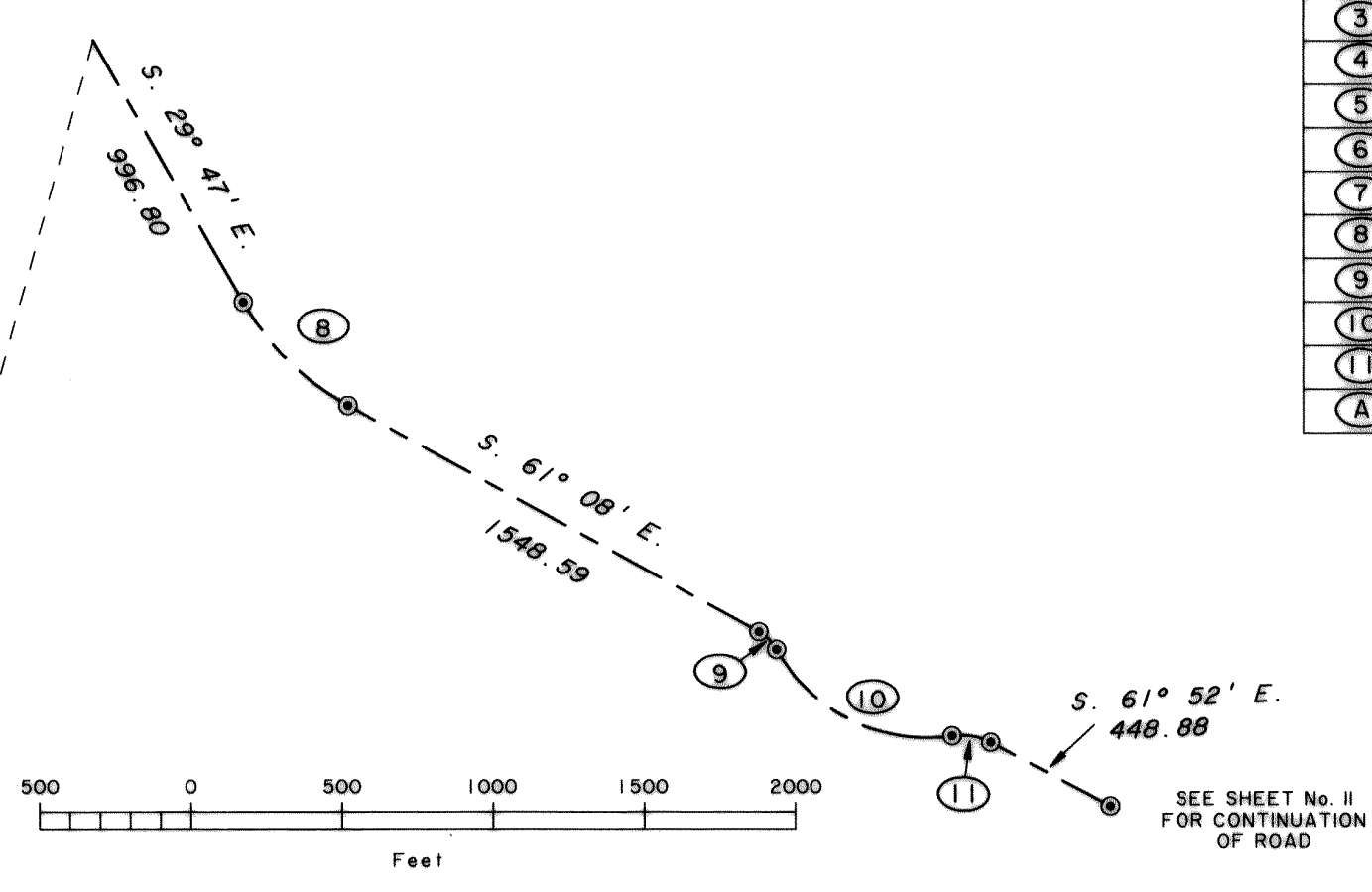
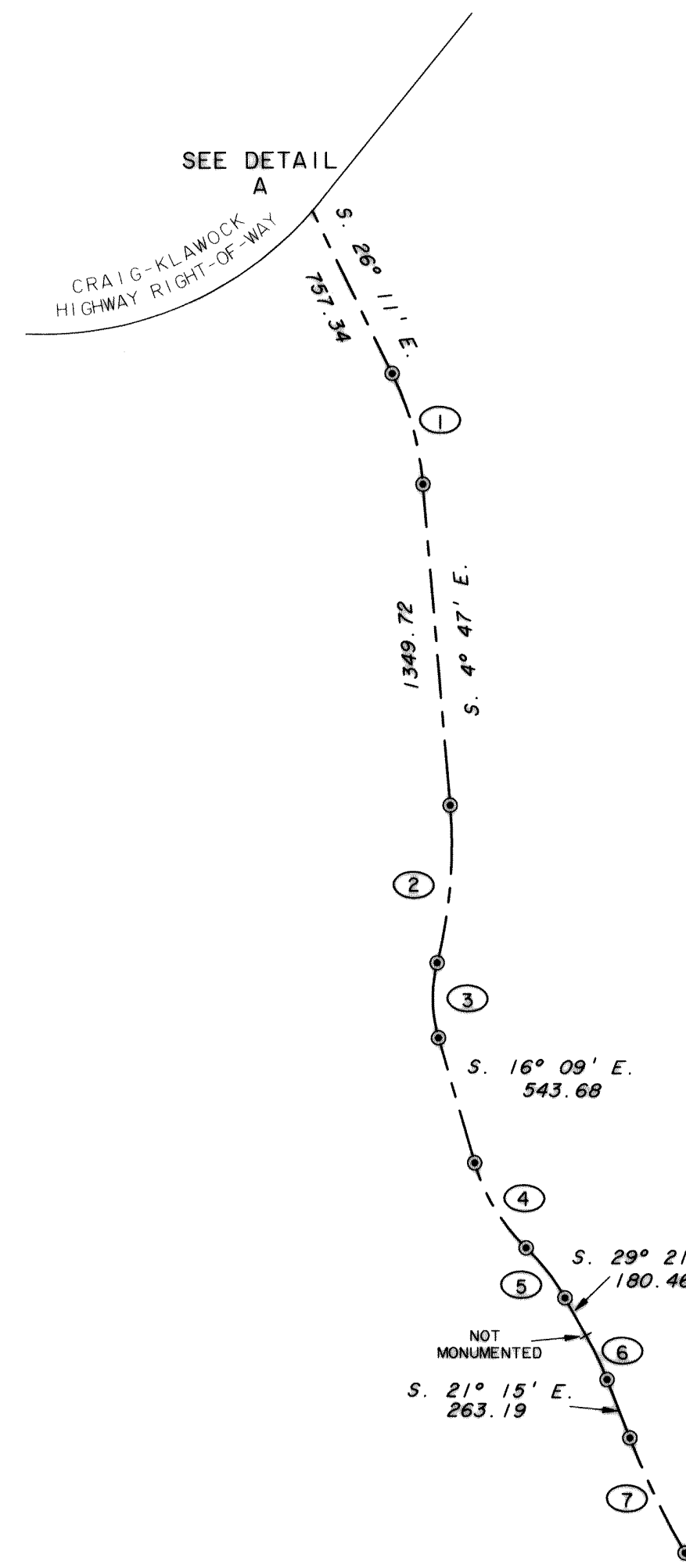
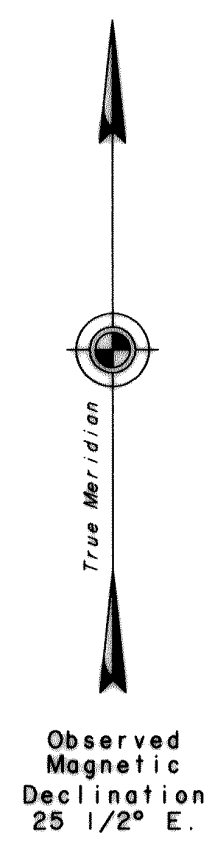
- LEGEND**
- ⊠ A wooden post, 4 x 4 ins., firmly set, projecting 10 ins. above the ground, with a 2 ins. diam. brass disc affixed to the top, mkd. ALASKA DEPT OF HWY ROW 1976. No record of these monuments was found.
 - ⊙ 5/8 in. diam rebar, 28 ins. long, buried 10 ins. below the ground with an alum. cap, 2 1/2 ins. diam., mkd ANCSA 14(c) SS1 1993 along with the appropriate curve number and point designation. Refer to monumentation table for deviations and accessories.
 - Ⓛ Bureau of Land Management or General Land Office monument found this survey.

MONUMENTATION

CURVE	INS. LONG	INS. BELOW GND.
PRC 2-3	21	5
PC 4	16	5
PC 7	18	10
PC 8	16	4
PRC 10-11	28	6

CURVE TABLE

CURVE	RADIUS	LENGTH	CHORD BEARING	LONG CHORD
①	1294.00	483.31	S. 15°29' E.	480.50
②	2000.00	664.89	S. 4°44' W.	661.83
③	600.00	318.39	S. 0°57' E.	314.67
④	800.00	420.67	S. 31°13' E.	415.84
⑤	900.00	265.69	S. 37°49' E.	264.72
⑥	1454.40	205.79	S. 25°18' E.	205.62
⑦	3595.00	535.91	S. 25°31' E.	535.42
⑧	897.60	491.22	S. 45°28' E.	485.11
⑨	148.10	83.63	S. 44°57' E.	82.52
⑩	564.70	688.14	S. 63°41' E.	646.34
⑪	205.30	131.62	S. 80°14' E.	129.38
A	1498.50	56.67	S. 39°52' W.	56.66



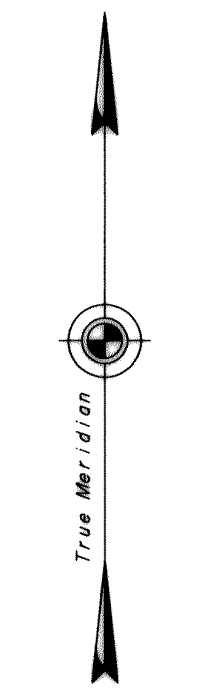
KETCHIKAN 95-57

CURVE TABLE

CURVE	RADIUS	ARC LENGTH	CHORD BEARING	LONG CHORD	CURVE	RADIUS	ARC LENGTH	CHORD BEARING	LONG CHORD
12	2300.00	795.20	S. 51°57' E.	791.24	30	5476.87	308.49	N. 63°46' E.	308.46
13	1000.00	476.56	S. 55°42' E.	472.06	31	1341.41	399.24	N. 73°55' E.	397.77
14	1200.00	320.61	S. 77°00' E.	319.66	32	714.15	363.77	S. 82°58' E.	359.85
15	1300.00	487.04	S. 73°55' E.	484.19	33	300.00	197.91	S. 87°16' E.	194.34
16	4775.20	905.34	S. 68°37' E.	903.99	34	250.00	183.45	S. 85°09' E.	179.36
17	438.71	154.59	S. 84°08' E.	153.79	35	300.00	239.52	S. 87°00' E.	233.21
18	500.00	94.83	N. 80°20' E.	94.69	36	802.90	257.84	N. 79°20' E.	256.73
19	450.00	260.55	S. 88°31' E.	256.93	37	338.15	154.85	S. 78°21' E.	153.50
20	900.00	381.13	S. 84°03' E.	378.29	38	600.00	305.14	S. 79°48' E.	301.86
21	300.00	162.24	S. 80°42' E.	160.27	39	800.00	368.23	S. 81°10' E.	364.99
22	1024.06	335.84	S. 74°35' E.	334.34	40	1130.03	224.76	S. 73°41' E.	224.39
23	396.64	239.24	N. 78°44' E.	235.63	41	284.48	64.58	S. 85°53' E.	64.44
24	1000.00	448.76	N. 48°36' E.	445.00	42	1200.00	231.79	N. 82°05' E.	231.43
25	350.00	99.49	N. 43°53' E.	99.16	43	1000.00	266.87	N. 84°12' E.	266.08
26	450.00	383.39	N. 76°27' E.	371.90	44	1000.00	122.27	N. 88°21' E.	122.20
27	600.00	225.69	S. 89°55' E.	224.36	45	1500.00	246.24	N. 89°33' E.	245.97
28	439.75	93.35	N. 73°13' E.	93.18	46	650.10	161.12	S. 78°39' E.	160.71
29	2673.58	233.12	N. 64°39' E.	233.04					

ALASKA NATIVE CLAIMS SETTLEMENT ACT
 (ANCSA) SECTION 14 (C) TRACTS A THROUGH M
 P.L. 92-203 (85 STAT. 688, 702, 703)
 SHAAN-SEET, INCORPORATED
CRAIG, ALASKA
 PORT ST. NICHOLAS ROAD

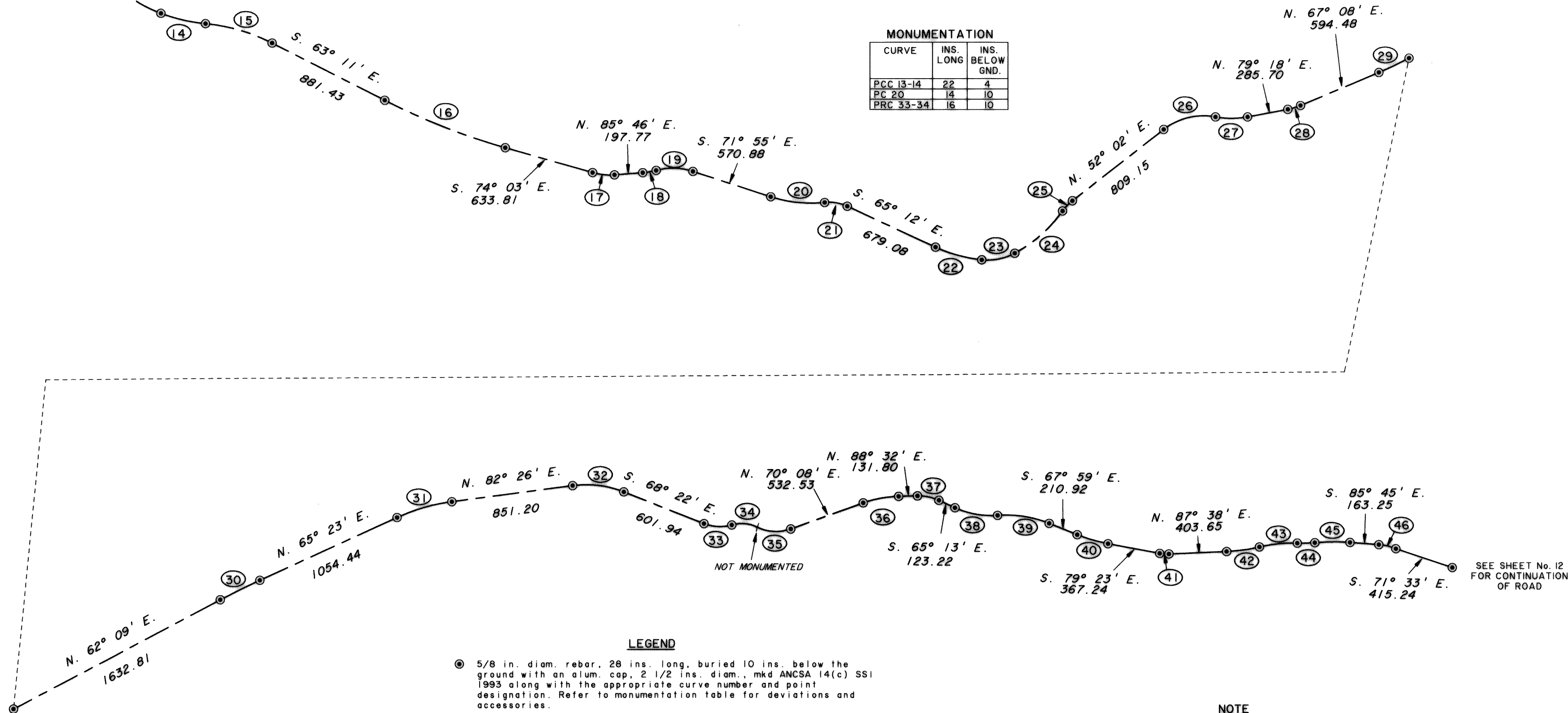
SEE SHEET No. 10
FOR CONTINUATION
OF ROAD



Observed
Magnetic
Declination
25 1/2° E.

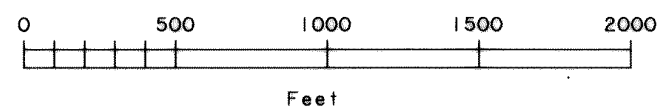
MONUMENTATION

CURVE	INS. LONG	INS. BELOW GND.
PCC 13-14	22	4
PC 20	14	10
PRC 33-34	16	10



LEGEND

- 5/8 in. diam. rebar, 28 ins. long, buried 10 ins. below the ground with an alum. cap, 2 1/2 ins. diam., mkd ANCSA 14(c) SS1 1993 along with the appropriate curve number and point designation. Refer to monumentation table for deviations and accessories.



NOTE

The Port St. Nicholas Road consists of a 60 ft. wide right-of-way, 30 ft. on either side of the platted centerline. This road was surveyed along the apparent centerline of the existing roadbed and monumented accordingly.

KETCHIKAN 95-57

ALASKA NATIVE CLAIMS SETTLEMENT ACT
(ANCSA) SECTION 14 (C) TRACTS A THROUGH M
P.L. 92-203 (85 STAT. 688, 702, 703)

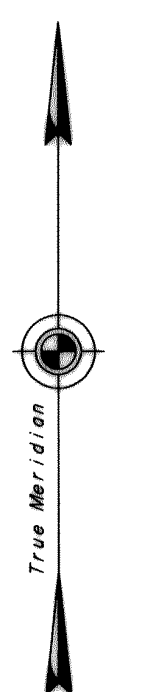
SHAAN-SEET, INCORPORATED
CRAIG, ALASKA
PORT ST. NICHOLAS ROAD

REFERENCE SHOULD BE MADE
TO
SHEET No. 1
FOR SURVEY INFORMATION

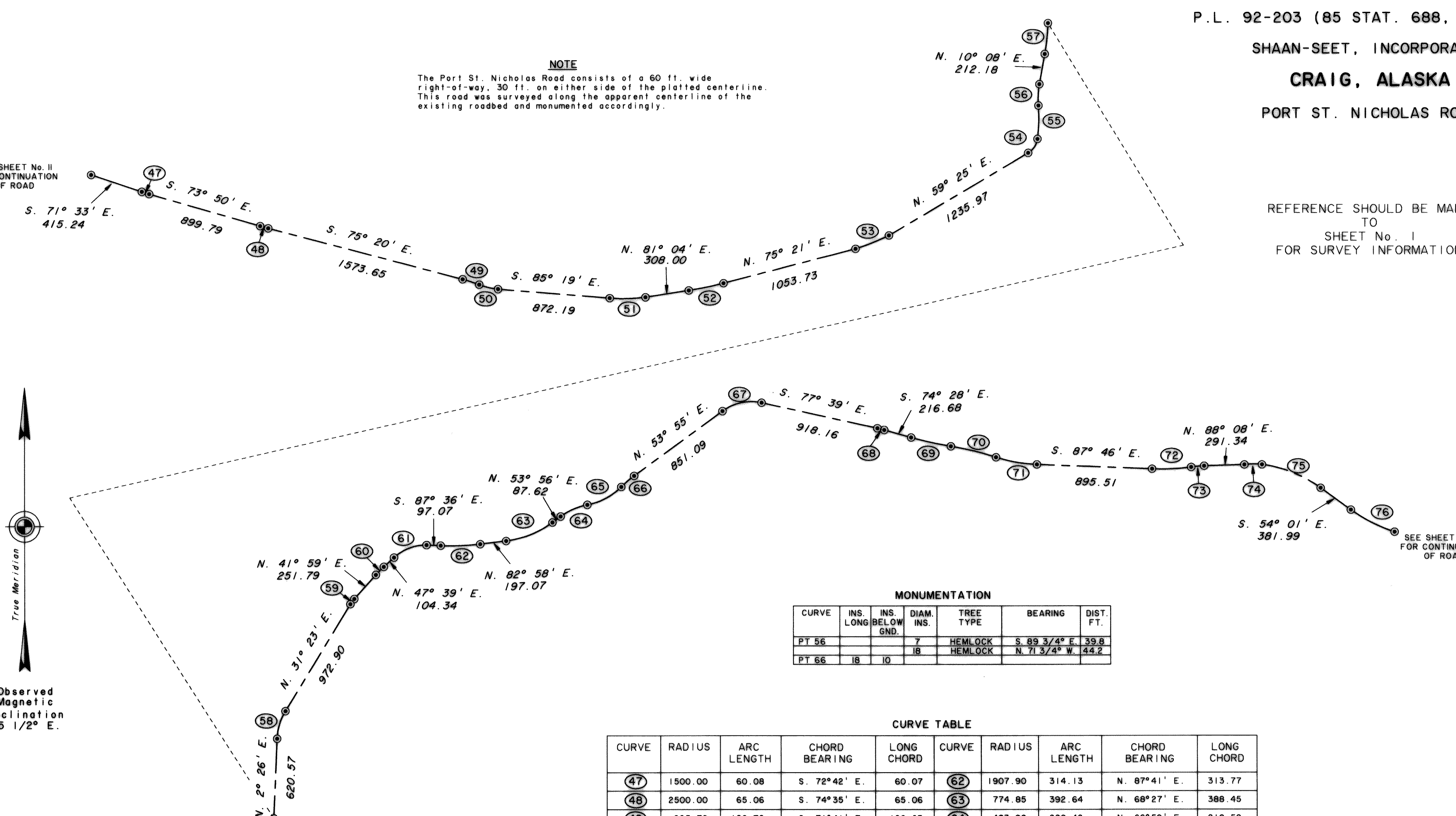
NOTE
The Port St. Nicholas Road consists of a 60 ft. wide right-of-way, 30 ft. on either side of the platted centerline. This road was surveyed along the apparent centerline of the existing roadbed and monumented accordingly.

SEE SHEET No. 11
FOR CONTINUATION
OF ROAD

SEE SHEET No. 13
FOR CONTINUATION
OF ROAD



Observed
Magnetic
Declination
25 1/2° E.



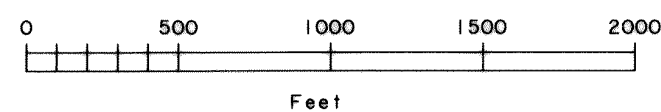
MONUMENTATION

CURVE	INS. LONG	INS. BELOW GND.	DIAM. INS.	TREE TYPE	BEARING	DIST. FT.
PT 56			7	HEMLOCK	S. 89 3/4° E.	39.8
PT 66	18	10	18	HEMLOCK	N. 71 3/4° W.	44.2

CURVE TABLE

CURVE	RADIUS	ARC LENGTH	CHORD BEARING	LONG CHORD	CURVE	RADIUS	ARC LENGTH	CHORD BEARING	LONG CHORD
47	1500.00	60.08	S. 72°42' E.	60.07	62	1907.90	314.13	N. 87°41' E.	313.77
48	2500.00	65.06	S. 74°35' E.	65.06	63	774.85	392.64	N. 68°27' E.	388.45
49	995.70	126.72	S. 71°41' E.	126.63	64	483.90	220.42	N. 66°59' E.	218.52
50	500.00	150.73	S. 76°41' E.	150.16	65	488.25	303.38	N. 62°14' E.	298.52
51	1313.10	312.06	N. 87°52' E.	311.33	66	800.00	132.25	N. 49°11' E.	132.10
52	2844.60	283.82	N. 78°13' E.	283.70	67	383.30	324.02	N. 78°08' E.	314.46
53	1096.65	304.96	N. 67°23' E.	303.98	68	1000.00	55.57	S. 76°04' E.	55.56
54	150.00	134.97	N. 33°39' E.	130.46	69	3000.00	317.05	S. 77°30' E.	316.91
55	1200.00	259.99	N. 1°40' E.	259.48	70	2500.00	362.02	S. 76°23' E.	361.70
56	650.00	166.44	N. 2°47' E.	165.98	71	1201.15	325.65	S. 80°00' E.	324.65
57	1992.42	267.76	N. 6°17' E.	267.56	72	1876.00	305.60	N. 87°34' E.	305.27
58	448.54	226.56	N. 16°54' E.	224.16	73	1350.50	123.35	N. 85°31' E.	123.31
59	274.31	50.81	N. 36°41' E.	50.74	74	2645.05	136.96	N. 89°37' E.	136.94
60	922.00	91.19	N. 44°49' E.	91.15	75	674.00	410.54	S. 71°28' E.	404.22
61	372.55	290.99	N. 70°02' E.	283.65	76	1200.00	382.57	S. 63°09' E.	380.95

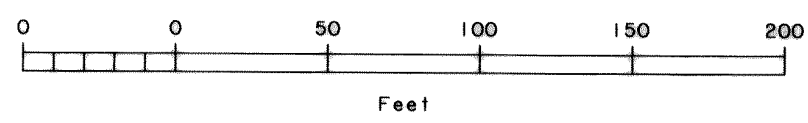
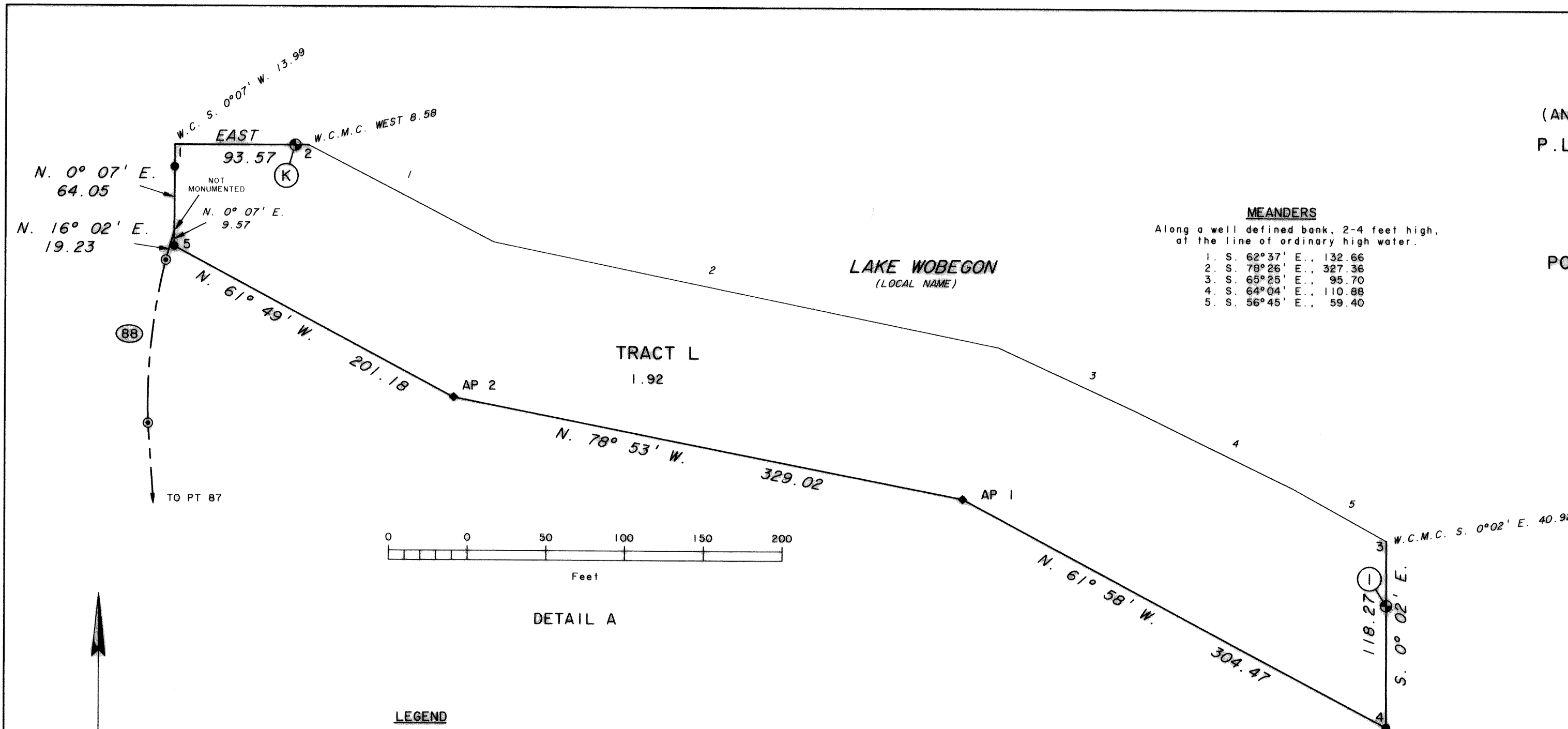
LEGEND
● 5/8 in. diam rebar, 28 ins. long, buried 10 ins. below the ground with an alum. cap. 2 1/2 ins. diam., mkd ANCSA 14(c) SSI 1993 along with the appropriate curve number and point designation. Refer to monumentation table for deviations and accessories.



ALASKA NATIVE CLAIMS SETTLEMENT ACT
(ANCSA) SECTION 14 (C) TRACTS A THROUGH M
P.L. 92-203 (85 STAT. 688, 702, 703)

SHAAN-SEET, INCORPORATED
CRAIG, ALASKA
PORT ST. NICHOLAS ROAD AND TRACT L

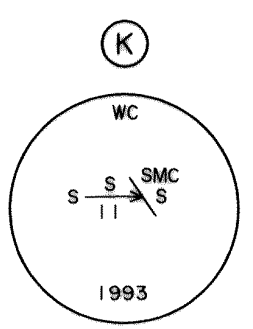
REFERENCE SHOULD BE MADE
TO
SHEET No. 1
FOR SURVEY INFORMATION



DETAIL A

LEGEND

- 5/8 in. diam rebar, 28 ins. long, buried 10 ins. below the ground with an alum. cap, 2 1/2 ins. diam., mkd ANCSA 14(c) SSI 1993 along with the appropriate curve number and point designation. Refer to monumentation table for deviations and accessories.
- Bureau of Land Management monument recovered this survey.
- A rebar, 5/8 in. diam., 28 ins. long, with a 2 1/2 ins. diam. alum cap marked SSI ANCSA 14C 1993 and with the appropriate angle point Nos., tract letter, and tract lines.
- Stainless steel post, 2 1/2 ins. diam., 28 ins. long, with brass cap mkd. SSI ANCSA 14C 1993 and with the appropriate cor. Nos., tract letter and tract lines. Witness corners have additional marks WC and an arrow pointing to the true corner. Bury a magnet in a white plastic case at the base of each stainless steel post as a memorial.

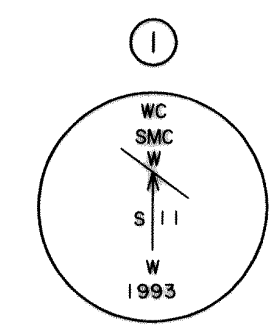


Recovered a brass tablet, 3 1/4 ins. diam., cemented to a 6 x 5 x 3 ft. granite boulder near the southerly end of a concrete dam, tablet mkd. as shown, from which the original accessories

A rock cutbank, 15 ft. high, 40 ft. long, bears S. 27 1/2° W., 53.00 ft. dist., mkd X B0 on the northerly face.

A concrete wall, 3 1/2 ft. high, 5 1/2 ft. long, 9 ins. thick, bears N. 25 3/4° W. 17.75 ft. dist., mkd X B0 on the southerly face.

This cor. is now designated as cor. No. 2, Tract L. No marks were added to the brass cap.

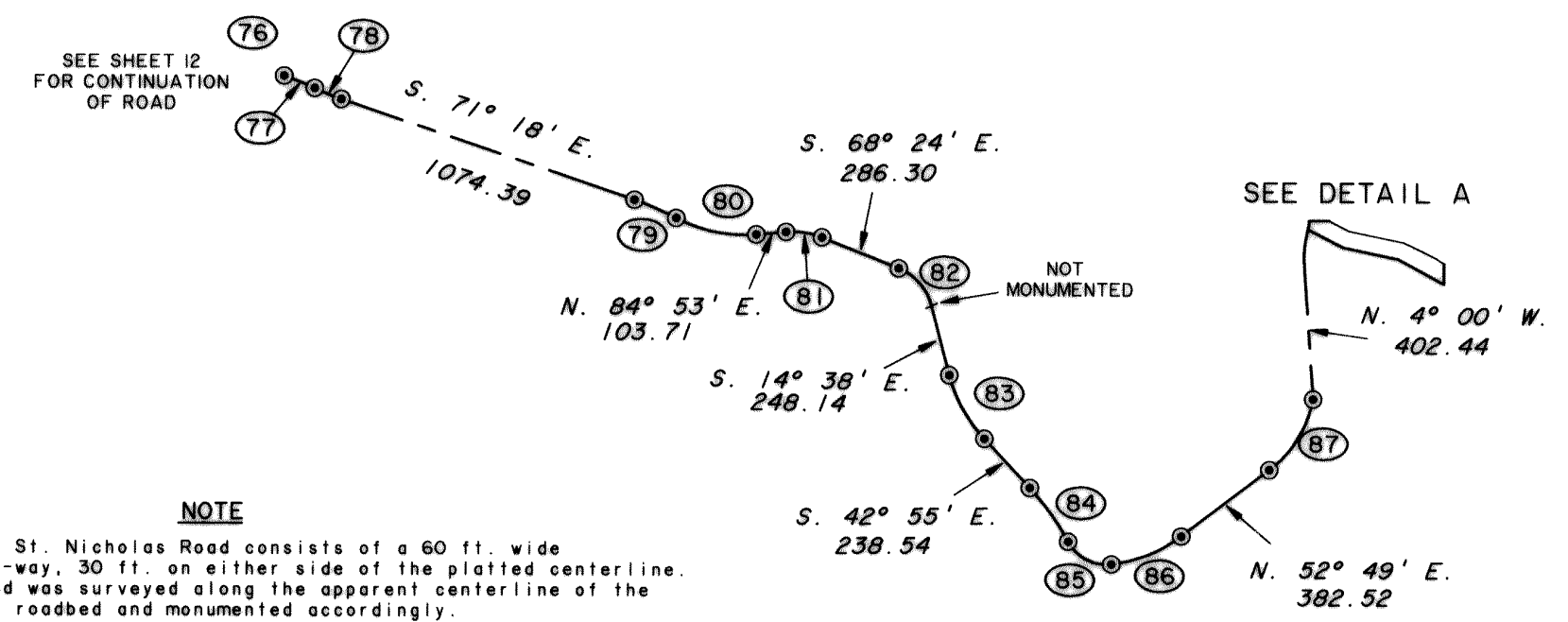
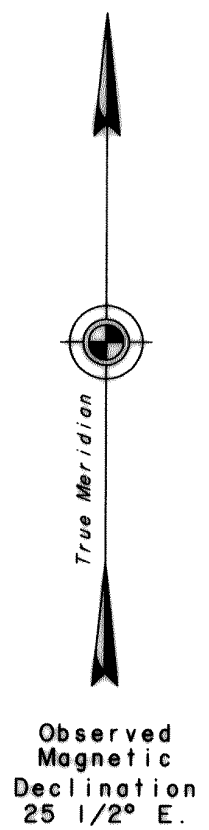


Recovered a stainless steel post, 2 1/2 ins. diam., firmly set, projecting 1 in. above ground, with brass cap mkd. as shown, from which the original bearing trees

A pine, 8 ins. diam., bears S. 33° E., 16.17 ft. dist., mkd. X BT on an open blaze.

A pine, 5 ins. diam., bears S. 50° W., 19.80 ft. dist., mkd. X BT on an open blaze.

This cor. is now designated as cor. No. 3, Tract L. No marks were added to the brass cap.

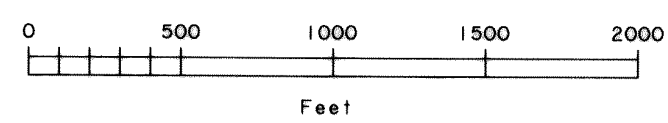


NOTE

The Port St. Nicholas Road consists of a 60 ft. wide right-of-way, 30 ft. on either side of the platted centerline. This road was surveyed along the apparent centerline of the existing roadbed and monumented accordingly.

Lines 1-2 and 3-4, Tract L, are coincident with the East & West and North & South centerlines, respectively, of the SW 1/4 of Sec. 11, Tp. 74 S., R. 82 E., Copper River Meridian, Alaska.

Cor. No. 1, Tract L, fell on a steep incline and was impractical to monument.



CURVE TABLE

CURVE	RADIUS	ARC LENGTH	CHORD BEARING	LONG CHORD
77	800.00	113.89	S. 68°12' E.	113.80
78	800.00	100.15	S. 67°43' E.	100.08
79	1000.00	158.19	S. 66°45' E.	158.03
80	500.00	287.11	S. 78°41' E.	283.18
81	272.58	127.12	S. 81°46' E.	125.97
82	190.44	178.70	S. 41°31' E.	172.22
83	503.70	248.64	S. 28°46' E.	246.12
84	900.00	229.46	S. 35°37' E.	228.84
85	150.00	179.72	S. 62°38' E.	169.16
86	500.00	263.70	N. 67°56' E.	260.66
87	369.90	366.80	N. 24°25' E.	351.95
88	298.80	104.48	N. 6°01' E.	103.95

MONUMENTATION

CURVE	INS. LONG	INS. BELOW GND.	DIAM. INS.	TREE TYPE	BEARING	DIST. FT.
PC 83			7	SPRUCE	S. 61 1/2° E.	38.6
			6	CEDAR	S. 17° W.	71.0
PC 88			9	SPRUCE	S. 37 1/2° W.	72.0
			12	CEDAR	N. 28 1/2° W.	85.4
PT 88	20	4				

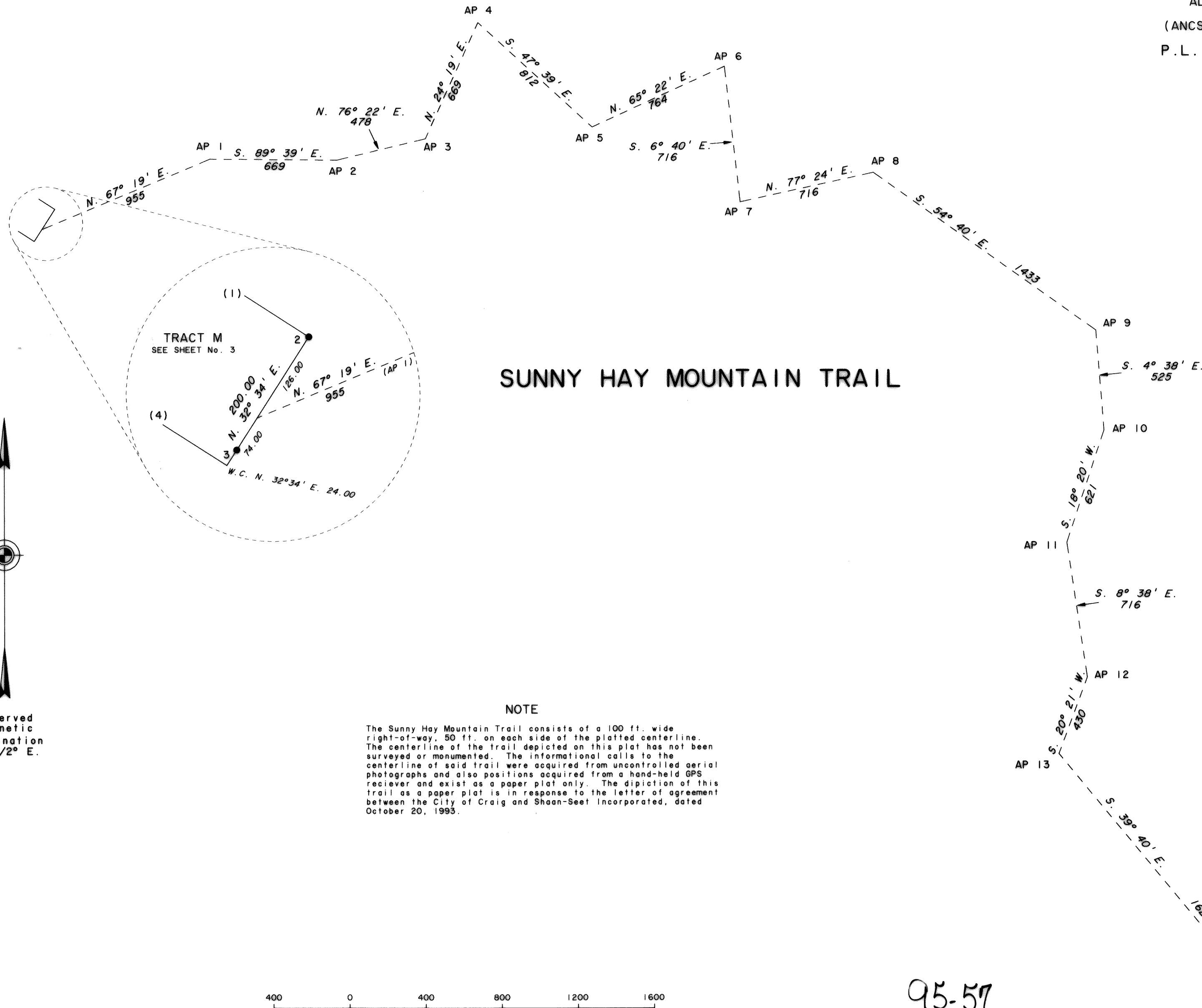
KETCHIKAN 95-57

ALASKA NATIVE CLAIMS SETTLEMENT ACT
(ANCSA) SECTION 14 (C) TRACTS A THROUGH M
P.L. 92-203 (85 STAT. 688, 702, 703)

SHAAN-SEET, INCORPORATED

AT
CRAIG, ALASKA

REFERENCE SHOULD BE MADE
TO
SHEET No. 1
FOR SURVEY INFORMATION

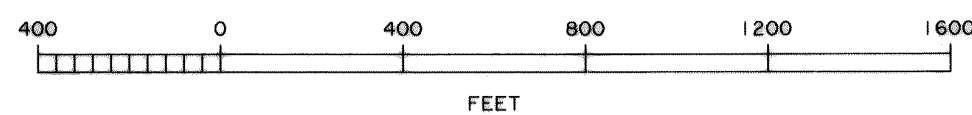


SUNNY HAY MOUNTAIN TRAIL

NOTE

The Sunny Hay Mountain Trail consists of a 100 ft. wide right-of-way, 50 ft. on each side of the plotted centerline. The centerline of the trail depicted on this plot has not been surveyed or monumented. The informational calls to the centerline of said trail were acquired from uncontrolled aerial photographs and also positions acquired from a hand-held GPS receiver and exist as a paper plot only. The depiction of this trail as a paper plot is in response to the letter of agreement between the City of Craig and Shaan-Seet Incorporated, dated October 20, 1993.

Observed
Magnetic
Declination
25 1/2° E.



95-57

RECORDED - FILED 85
KETCHIKAN REC. DIST.
DATE Sept. 12, 1995
TIME 10:13 A.M.
Requested by USA/BLM
Address

NW 1/16 COR., SEC. 10,
T. 74 S., R. 81 E.
COPPER RIVER MERIDIAN
SEE SHEET No. 7

C-W 1/16 COR., SEC. 10,
T. 74 S., R. 81 E.
COPPER RIVER MERIDIAN
SEE SHEET No. 7