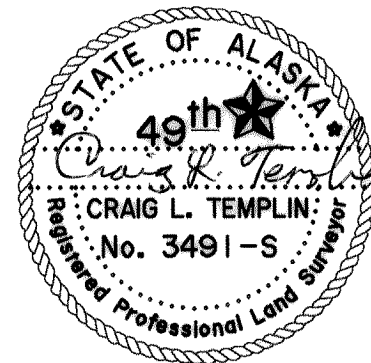


**SURVEYOR'S CERTIFICATE**

I hereby certify that I am properly registered and licensed to practice land surveying in the State of Alaska, that this plat represents a survey made by me or under my direct supervision, that the monuments shown hereon actually exist as described and that all dimensions and other details are correct.

*Craig L. Templin*  
 CRAIG L. TEMPLIN, AK RLS No. 3491  
 8/13/99  
 Date

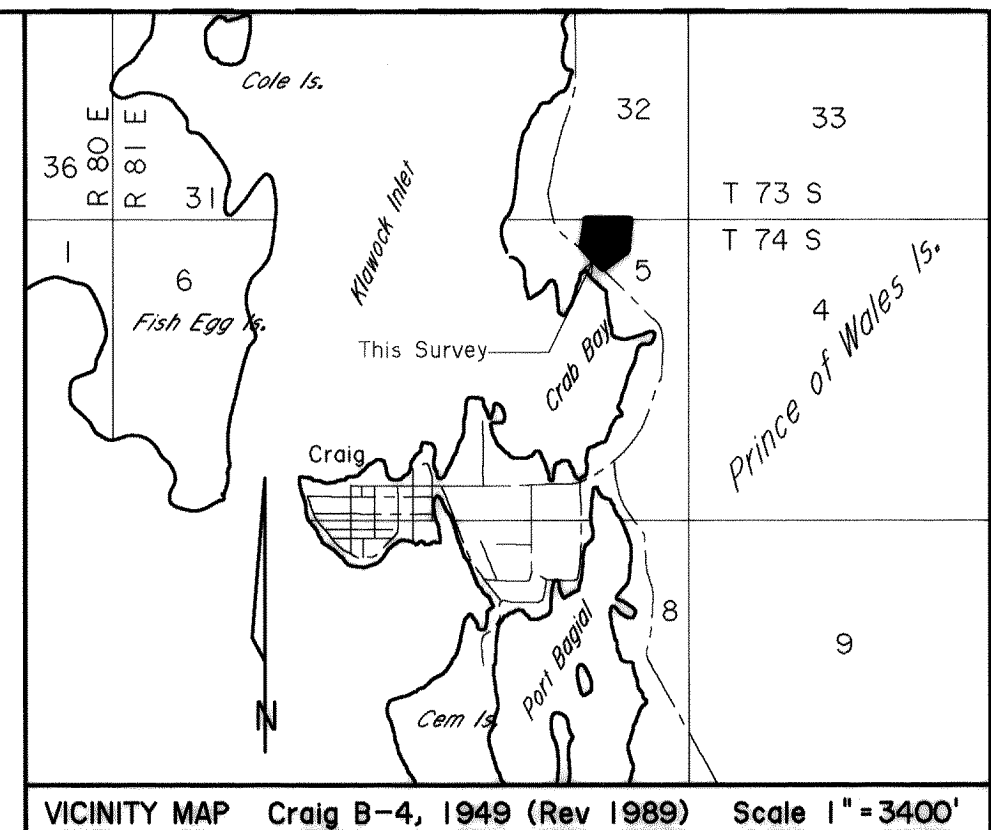


**APPROVAL BY CITY OF CRAIG PLANNING COMMISSION**

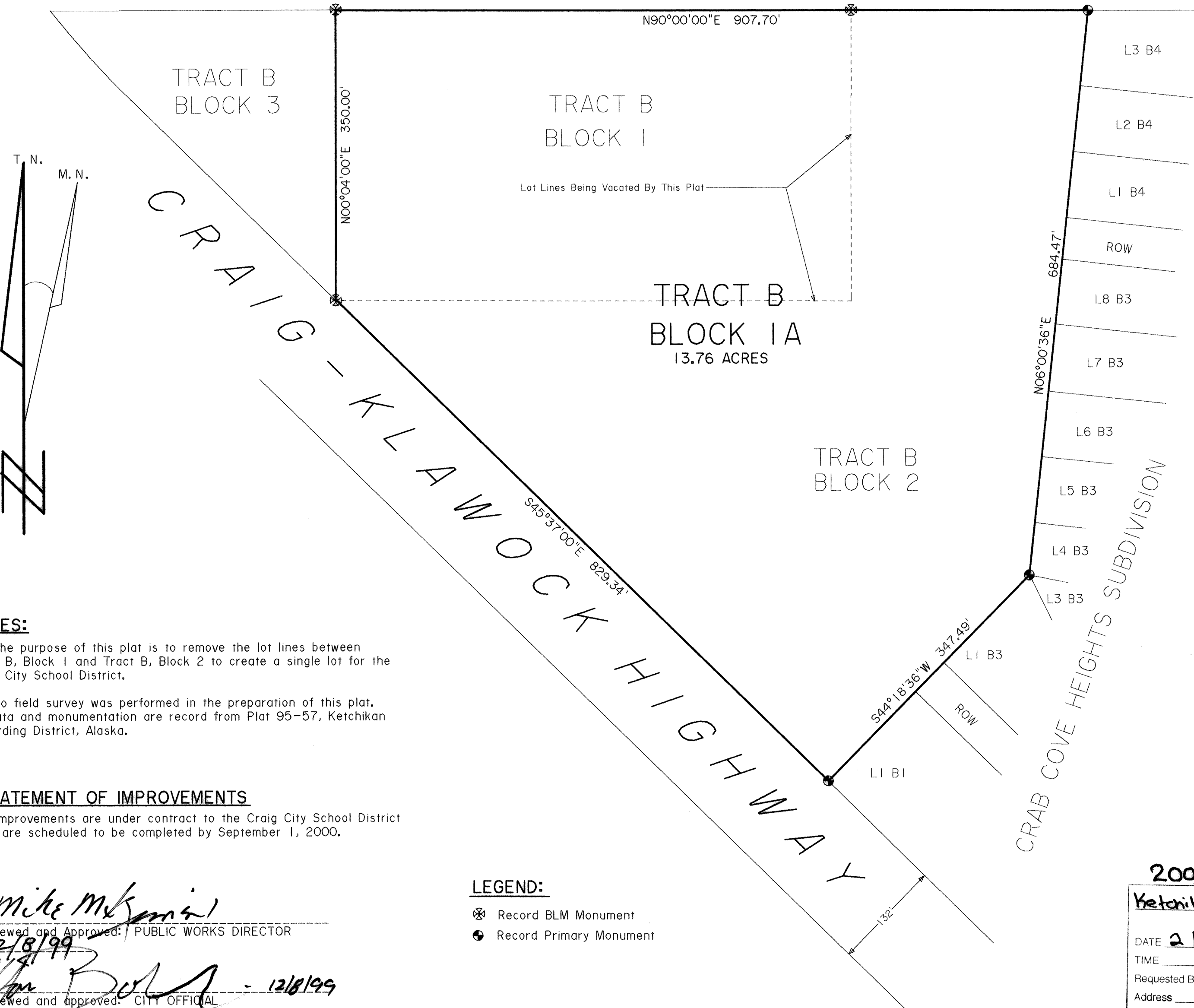
This final subdivision plat has been reviewed and approved in accordance with the Craig Land Development Code - Subdivision Ordinance. All dedications to the public have been inspected and accepted by the City of Craig.

*John Bolt*  
 City Planning Official  
 12/13/99  
 Date  
*Karen Safford*  
 Planning Commission Member  
 01-26-00  
 Date

*Ray Mielke*  
 Presiding Officer - Planning Commission  
 12-13-99  
 Date



UNSUBDIVIDED  
 SECTION 32, T 73 S, R 81 E, CRM



**CERTIFICATE OF OWNERSHIP AND DEDICATION**

We hereby certify that we are the owners of TRACT B, BLOCK 1A, ANCSA 14 (C) TRACTS A THROUGH M, SHAAN-SEET, INC, that we do for ourselves, our heirs, and assigns dedicate, donate, and convey to the public all right-of-way / alleys / public utility areas / easements / other public ways as shown hereon.

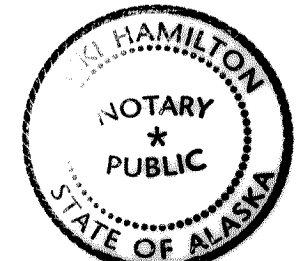
*Thomas Briggs* Jan. 21, 2000  
 Owner Date

**NOTARYS ACKNOWLEDGEMENT**

Subscribed and sworn before me this 21<sup>st</sup> day of January, 2000.

Personally appeared *S. Thomas Briggs* and \_\_\_\_\_

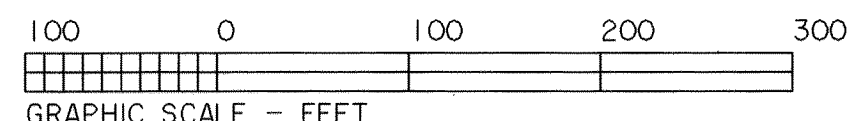
*Vicki Hamilton*  
 Notary Public for the State of Alaska  
 My Commission Expires 8-12-01



**TAX STATEMENT**

I hereby certify that all ad valorem taxes, special assessments, and other charges required by law to be placed on the tax rolls have been paid.

*Vicki Hamilton*  
 City Clerk  
 1-21-00  
 Date



**NOTES:**

- The purpose of this plat is to remove the lot lines between Tract B, Block 1 and Tract B, Block 2 to create a single lot for the Craig City School District.
- No field survey was performed in the preparation of this plat. All data and monumentation are record from Plat 95-57, Ketchikan Recording District, Alaska.

**STATEMENT OF IMPROVEMENTS**

All improvements are under contract to the Craig City School District and are scheduled to be completed by September 1, 2000.

*Mike McKinley*  
 Reviewed and Approved: PUBLIC WORKS DIRECTOR  
 12/8/99  
 Date  
*John Bolt* - 12/8/99  
 Reviewed and approved: CITY OFFICIAL

- LEGEND:**
- ⊗ Record BLM Monument
  - ⊕ Record Primary Monument

2000-6  
 Ketchikan REC DIST  
 DATE 2/4/2000  
 TIME 8:58 A.M.  
 Requested By City of  
 Address CRAIG

PLAT OF:  
**TRACT B, BLOCK 1A**  
**ANCSA SECTION 14 (C), SHAAN SEET, INC.**  
 A Subdivision of Tract B, Block 1 and Tract B, Block 2, ANCSA Section 14 (C) Tracts A through M, Shaan Seet, Inc., Plat No. 95-57, Ktn. Rec. Dist.  
 Located Within:  
 Section 5, T 74 S, R 81 E, CRM, Alaska  
 Containing 13.76 Acres

Surveyed For: City of Craig Craig, Alaska 99920	Surveyed By: TEMPLIN LAND SURVEYING PO BOX WWP - WHALE PASS KETCHIKAN, AK. 99950 (907) 846-5120
---	---

Scale: 1" = 100' Date: 7/23/99 Drawn By: BLT Checked By: CLT File No. TRBCRAIG