

Survey accepted January 24, 1923.

P L A T  
of  
EXTERIOR LINES  
of

U.S. SURVEY No. 1429,  
U.S. SURVEY No. 1429 A.  
Made under Sections 11, 12, 13, 14 and 15,  
of an Act of Congress entitled "An Act to  
Repeal Timber Culture Laws", approved March  
3, 1891, and the regulations thereunder,  
for a tract of public land known as

CRAIG TOWNSITE  
ALASKA

Situate

On an island in Klawak Inlet, off West  
shore of Prince of Wales Island.

Latitude 55°20'30"N., Longitude 133°09'00"W.

JUNEAU LAND DISTRICT

TERRITORY OF ALASKA

Scale 3 chains = 1 inch  
Variation 20°40'E.  
Area 46.07 acres.

As surveyed by

E.C. GUERIN, U.S.C.E.,

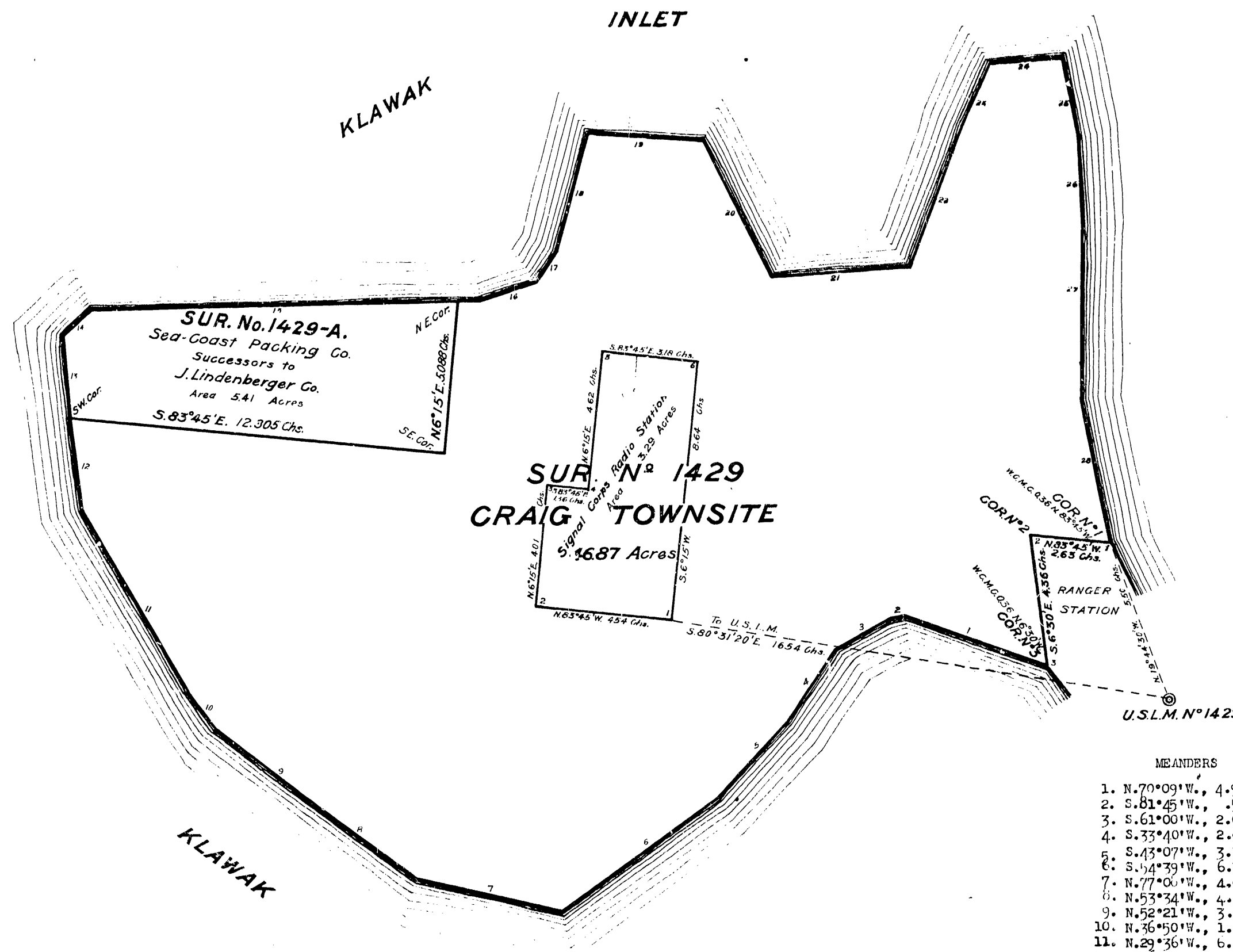
May 20 - June 10, 1922, under Special In-  
structions issued by the U. S. Surveyor  
General for Alaska, dated April 24, 1922.

Office of U.S. Surveyor General,  
Juneau, Alaska, December 13, 1922.

The original field notes of the survey of  
the Exterior Lines of the site known as Craig Town-  
site, Alaska, from which this plat was made under  
my direction, have been examined and approved, and  
are on file in this office, and I hereby certify  
that they furnish such an accurate description of  
said site as will, if incorporated into a patent,  
serve fully to identify the premises, and such  
reference is made therein to natural objects and  
permanent monuments, as will fix the locus thereof.

And I further certify that this is a  
correct plat of said site made in conformity  
with said original field notes of the survey there-  
of, and the same is hereby approved.

*E.C. Guerin*  
U.S. Surveyor General for Alaska.

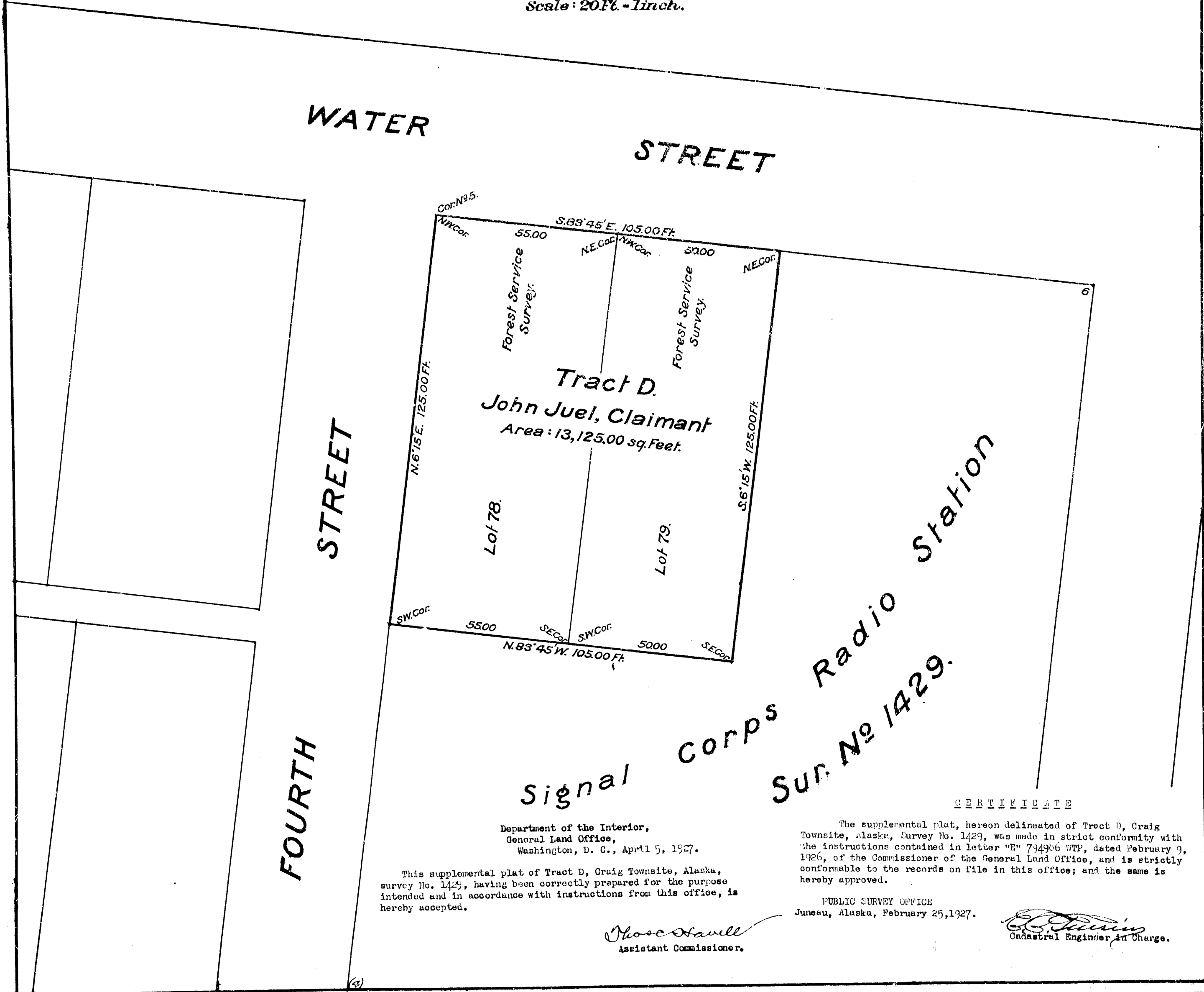


MEANDERS

1. N.70°09'W., 4.96 chs.
2. S.81°45'W., .51 "
3. S.61°00'W., 2.09 "
4. S.33°40'W., 2.06 "
5. S.43°07'W., 3.36 "
6. S.54°39'W., 6.36 "
7. N.77°06'W., 4.08 "
8. N.53°34'W., 4.86 "
9. N.52°21'W., 3.37 "
10. N.36°50'W., 1.56 "
11. N.29°36'W., 6.90 "
12. N. 6°30'W., 3.06 "
13. N. 5°00'W., 2.65 "
14. N.47°08'E., 1.34 "
15. N.89°12'E., 12.80 "
16. N.72°20'E., 1.91 "
17. N.35°13'E., 1.25 "
18. N.15°19'E., 4.01 "
19. S.85°56'E., 3.79 "
20. S.26°02'E., 5.00 "
21. N.86°53'E., 4.54 "
22. N.21°05'E., 5.01 "
23. N.24°41'E., 2.16 "
24. N.86°07'E., 2.39 "
25. S.10°29'E., 2.60 "
26. S. 2°13'E., 3.14 "
27. S.00°47'W., 5.40 "
28. S.11°15'E., 4.85 "

# Supplemental Plat of Tract D. Craig Townsite, Alaska.

Scale: 20 Ft. = 1 inch.



**Tract D.**  
**John Juel, Claimant**  
 Area: 13,125.00 sq. Feet.

Signal Corps Radio Station  
 Sur. No. 1429.

### CERTIFICATE

The supplemental plat, hereon delineated of Tract D, Craig Townsite, Alaska, Survey No. 1429, was made in strict conformity with the instructions contained in letter "E" 794906 WTP, dated February 9, 1926, of the Commissioner of the General Land Office, and is strictly conformable to the records on file in this office; and the same is hereby approved.

PUBLIC SURVEY OFFICE  
 Juneau, Alaska, February 25, 1927.

*E. J. Davis*  
 Cadastral Engineer in Charge.

Department of the Interior,  
 General Land Office,  
 Washington, D. C., April 5, 1927.

This supplemental plat of Tract D, Craig Townsite, Alaska, survey No. 1429, having been correctly prepared for the purpose intended and in accordance with instructions from this office, is hereby accepted.

*Mose Savell*  
 Assistant Commissioner.

*map by*



ORIGINAL

SUBDIVISION  
U. S. SURVEY  
No. 1429, ALASKA

SITUATED  
AT  
CRAIG, ALASKA

APPROXIMATE GEOGRAPHIC POSITION  
OF  
CORNER NO. 1  
U.S. SURVEY NO. 1429  
LATITUDE 55°28.6' NORTH, LONGITUDE 133°08.8' WEST

SURVEYED BY  
EDWARD T. PRENDERGAST  
SUPERVISORY CADASTRAL SURVEYOR  
JULY 10, 1972  
UNDER SUPPLEMENTAL SPECIAL INSTRUCTIONS  
DATED  
APRIL 25, 1972  
AND  
APPROVED  
APRIL 25, 1972

UNITED STATES DEPARTMENT OF THE INTERIOR  
BUREAU OF LAND MANAGEMENT  
Washington, D.C. April 22, 1977

This plat is strictly conformable to the approved field notes, and the survey, having been correctly executed in accordance with the requirements of law and the regulations of this Bureau, is hereby accepted.

For the Director

*Orin B. Collier*

Acting Chief, Division of Cadastral Survey

