

PLEASE NOTE: SUPPLEMENTAL PLAT OF TRACT D, CRAIG TOWNSITE, ALASKA SURVEY NO. 1430, filed April 4th, 1951, in Vol. 1 of Plats, Ketchikan Recording Dist. Received from ROW DIVISION, ALASKA DEPT. OF HIGHWAYS, AND FILED BY DISTRICT COURT AS PACKET #248, Vol. 1 of Plats (Packets), Information only (Juneau)

TH

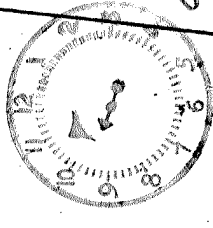
STREET

WATER

Vol. 1 PLATS PACKET #248

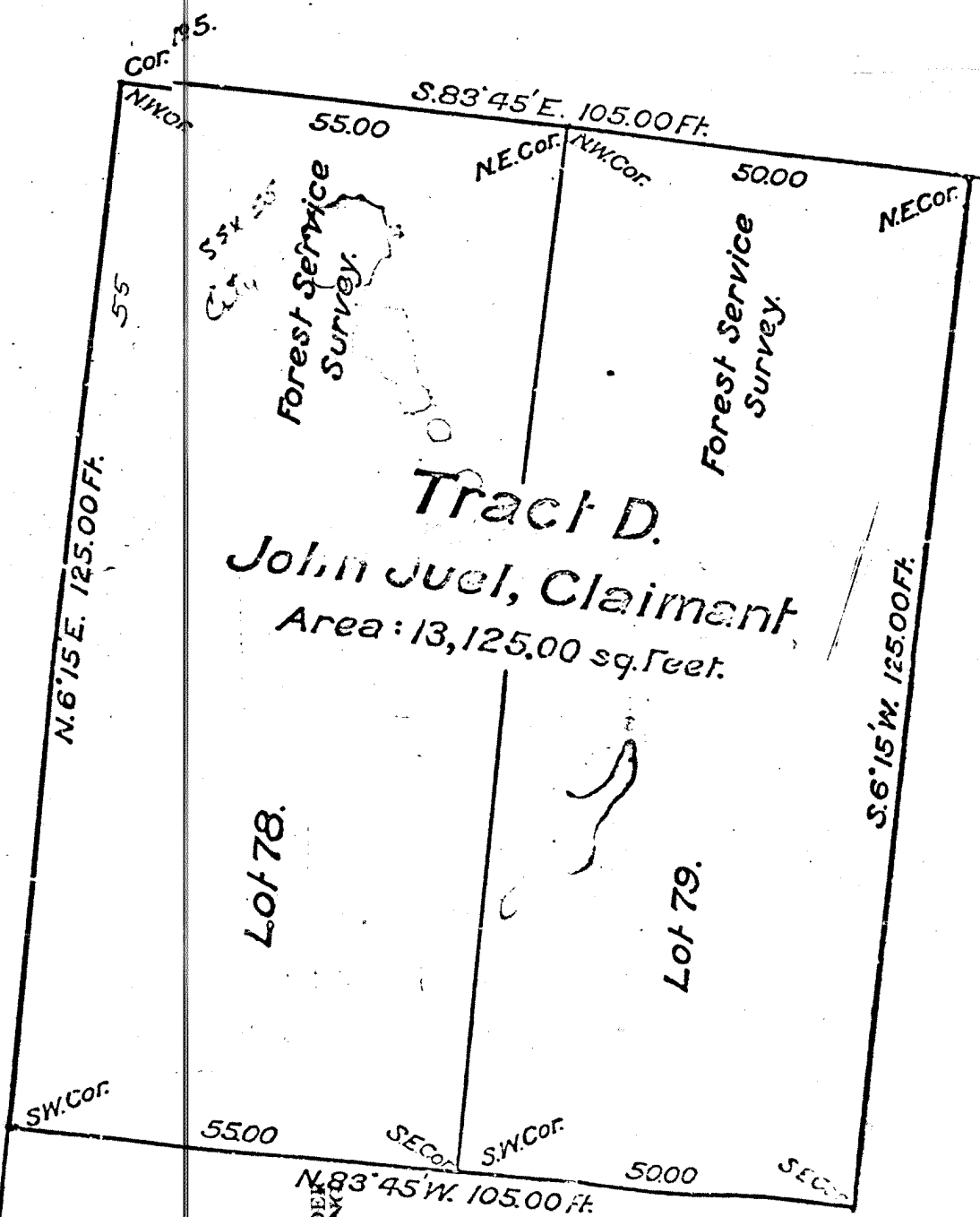
72-1629

MAY 31 '72 AM

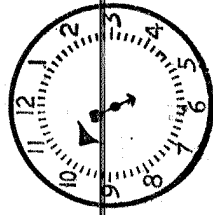


RECEIVED MAGISTRATE-RECORDER KETCHIKAN RECORDING DISTRICT

STREET



MAY 30 '72 AM



RECEIVED MAGISTRATE-RECORDER KETCHIKAN RECORDING DISTRICT

Corps

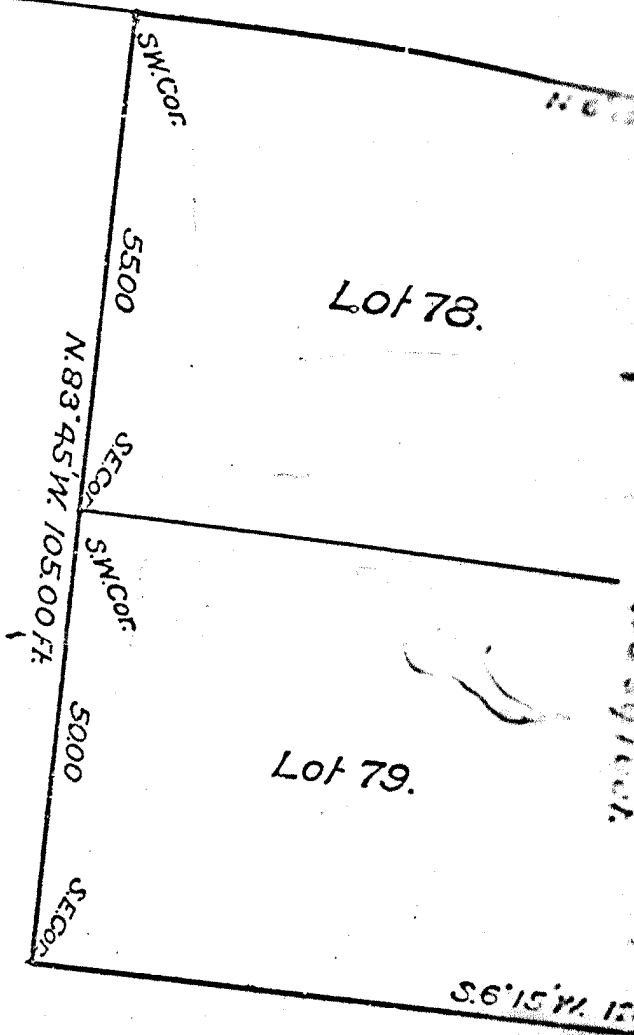
# Supplemental Plat of Tract D. Craig Townsite, Alaska.

Scale: 20 Ft. = 1 inch.

DUPLICATE TRIPL

FOURTH

STREET



Signal Corps  
SUR. No. 1429  
Radio Station

This supplemental plat of Tract D, Craig Townsite, Alaska, survey No. 1429, having been correctly prepared for the purpose intended and in accordance with instructions from this office, is hereby accepted.

*W. C. Starnell*  
Assistant Commissioner.

The supplemental plat, hereon delineated of Tract D, Craig Townsite, Alaska, Survey No. 1429, was made in strict conformity with the instructions contained in letter No. 734986 WTP, dated February 9, 1926, of the Commissioner of the General Land Office, and is strictly conformable to the records on file in this office; and the same is hereby approved.

PUBLIC SURVEY OFFICE  
Juneau, Alaska, February 25, 1927.

*W. C. Starnell*  
Chief Signal Engineer in Charge.

733