

MAP
OF
CRAIG TOWNSITE
ALASKA

SURVEY N° 1430

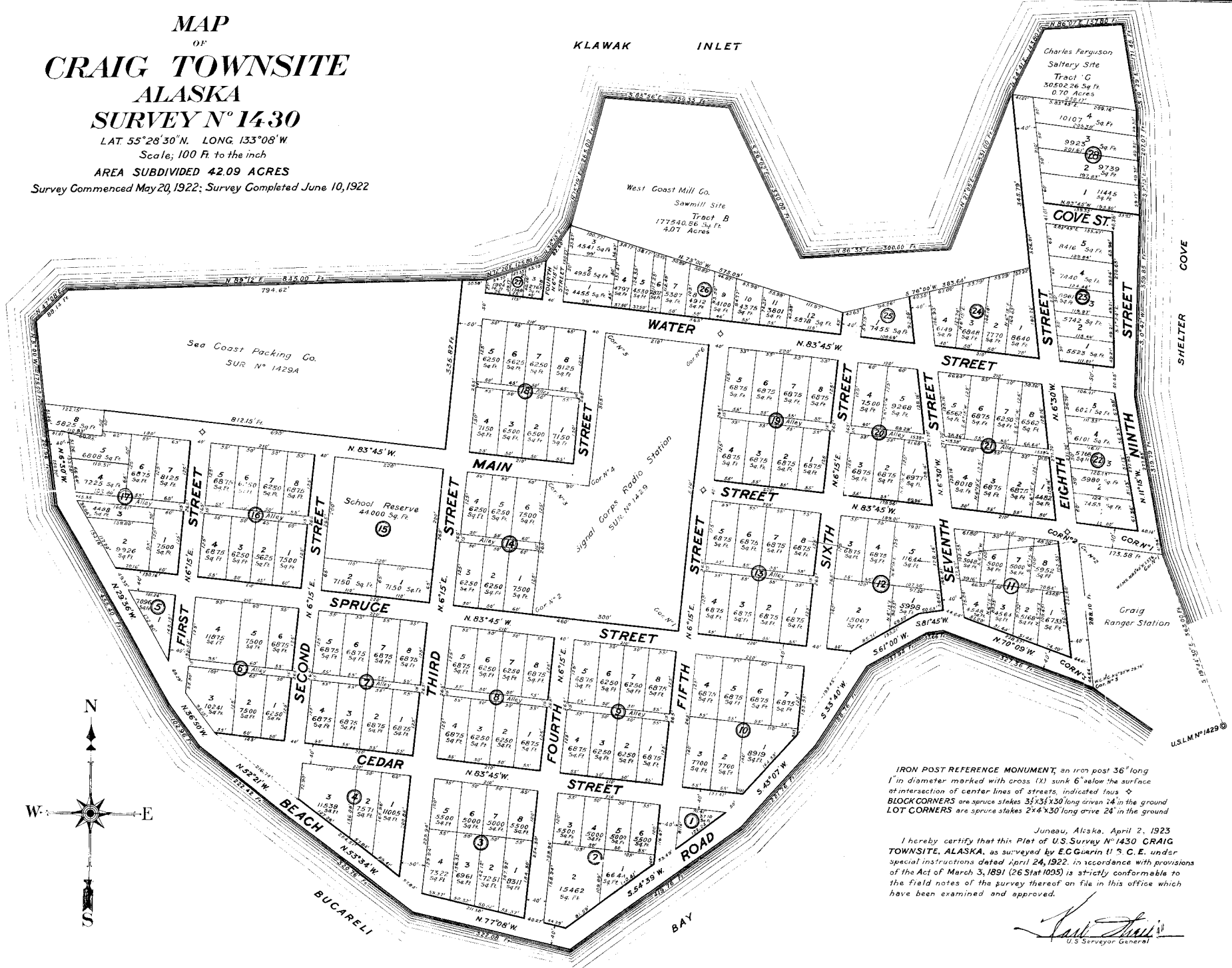
LAT. 55°28'30"N. LONG. 133°08'W

Scale, 100 Ft. to the inch

AREA SUBDIVIDED 42.09 ACRES

Survey Commenced May 20, 1922; Survey Completed June 10, 1922

KLAWAK INLET



IRON POST REFERENCE MONUMENT, an iron post 36" long 1" in diameter marked with cross (X) sunk 6" below the surface at intersection of center lines of streets, indicated thus \times
BLOCK CORNERS are spruce stakes 3 1/2 x 3 1/2 long driven 24" in the ground
LOT CORNERS are spruce stakes 2 x 4 x 30 long driven 24" in the ground

Juneau, Alaska, April 2, 1923
I hereby certify that this Plat of U.S. Survey N° 1430 CRAIG TOWNSITE, ALASKA, as surveyed by E.C. Guerin U.S.C.E. under special instructions dated April 24, 1922, in accordance with provisions of the Act of March 3, 1891 (26 Stat 1005) is strictly conformable to the field notes of the survey thereof on file in the office which have been examined and approved.

Carl Shinn
U.S. Surveyor General

Craig Townsite USS1430

#37

El

No. 37

This certifies that the within Instrument was filed for record in the office of the

KETCHIKAN RECORDING DISTRICT

No. 8 and recorded on the 4th day

of April 1951 at 3:00

o'clock P.M. in Vol. 1

of P. Plates of page

of the record of said office at Ketchikan

Alaska

P. J. Gilmore