

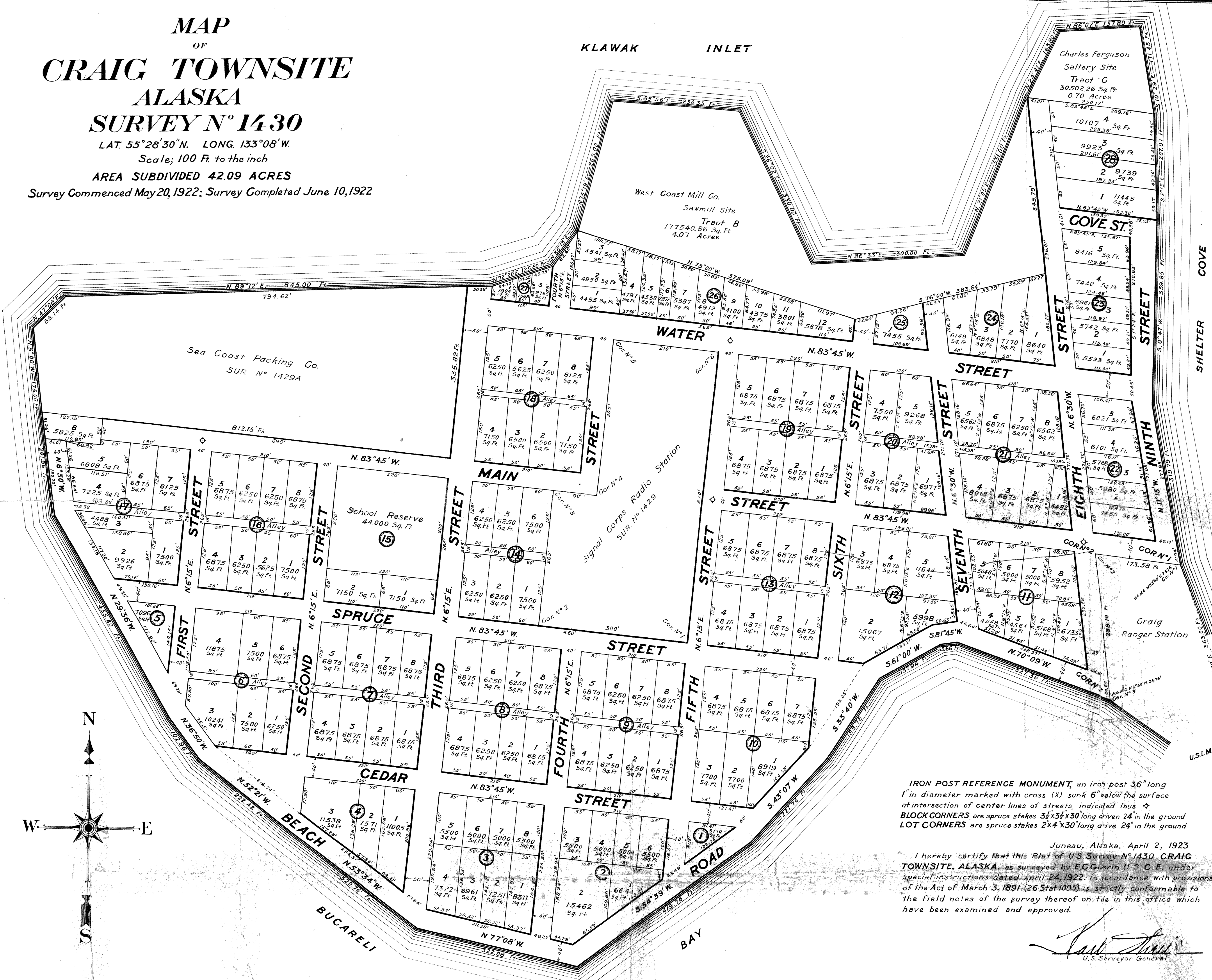
MAP
OF
CRAIG TOWNSITE
ALASKA
SURVEY N° 1430

LAT. 55°28'30"N. LONG. 133°08'W.
Scale; 100 Ft. to the inch

AREA SUBDIVIDED 42.09 ACRES

Survey Commenced May 20, 1922; Survey Completed June 10, 1922

KLAWAK INLET



Charles Ferguson
Saltery Site
Tract C
30502.26 Sq. Ft.
0.70 Acres

West Coast Mill Co.
Sawmill Site
Tract B
177540.86 Sq. Ft.
4.07 Acres

Sea Coast Packing Co.
SUR N° 1429A

School Reserve
44,000 Sq. Ft.

Signal Corps Radio Station
SUR. N° 1429

Craig
Ranger Station

IRON POST REFERENCE MONUMENT, an iron post 36" long
1" in diameter marked with cross (X) sunk 6" below the surface
at intersection of center lines of streets, indicated thus \diamond
BLOCK CORNERS are spruce stakes 3 1/2 x 3 1/2 x 30" long driven 24" in the ground
LOT CORNERS are spruce stakes 2 x 4 x 30" long driven 24" in the ground

Juneau, Alaska, April 2, 1923
I hereby certify that this Plat of U.S. Survey N° 1430, CRAIG
TOWNSITE, ALASKA, as surveyed by E.C. Guerin U.S. C.E. under
special instructions dated April 24, 1922, in accordance with provisions
of the Act of March 3, 1891, (26 Stat 1095) is strictly conformable to
the field notes of the survey thereof on file in this office which
have been examined and approved.

Carl J. Guerin
U.S. Surveyor General

