

KLAWAK INLET

A.T.S. NO. 212

TIDELANDS ADDITION TO U.S. SURVEY NO. 1429A

U.S. SURVEY NO. 1429A

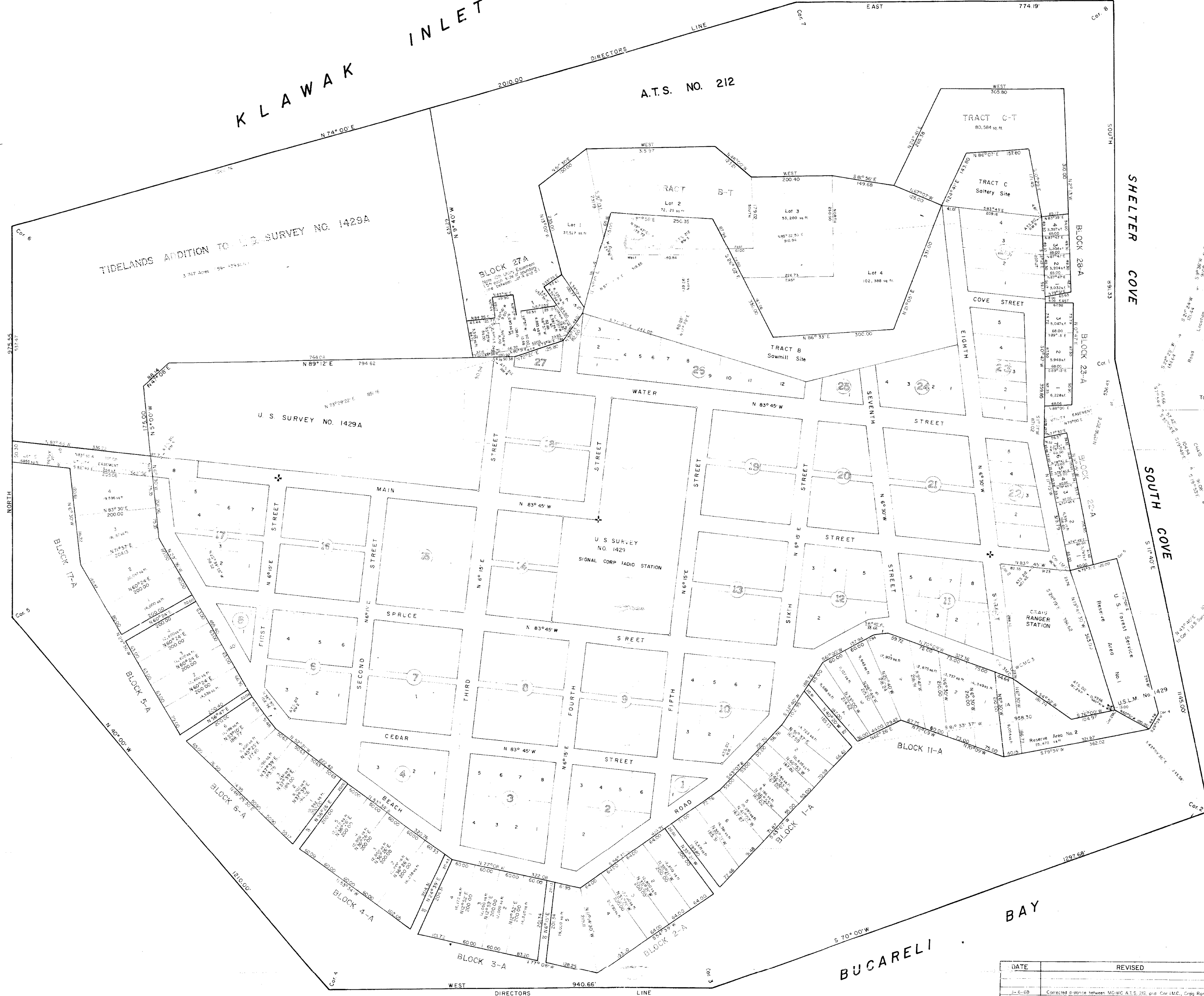
SHELTER COVE

SOUTH COVE

PRINCE OF WALES ISLAND

BAY

BUcareLI



File #1, Plat #155
APR 22 1968



NOTE: Refer to original tideland acquisition plat A.T.S. No. 312 for description of monuments.

SURVEYOR'S CERTIFICATE

I hereby certify that I am registered to practice land surveying in Alaska and that this plat represents a survey made by me or under my direct supervision and the monuments shown thereon actually exist as located, and that all dimensional and other details are correct.

John J. Trammell
Registered Number 321-E



DATE	REVISED	REV. BY
12-4-68	Corrected station between MG and A.T.S. 212, and City L.M.C., Craig Ranger Station.	H.J.F.
12-4-68	Corrected station and support between Block 1 and Block 2, S.E.S. 212.	H.J.F.
DATE OF SURVEY Beginning September 18, 1966 Ending September 28, 1966		NAME OF SURVEYOR HANS J. FURUSETH 2331 Fourth Avenue Ketchikan, Alaska
CITY OF CRAIG SUBDIVISION PLAT CRAIG TIDELANDS ADDITION		
DRWN. BY: H.J.F.	APPROVAL RECOMMENDED:	
DATE APPROVED: MAY 15 1968	APPROVED: <i>[Signature]</i> Mayor, City of Craig	
SCALE: 1"=100'	CHECKED:	FILE NO.

