

NOTES:

- The error of closure of this survey does not exceed 1:5000.
- All bearings shown are true bearings as oriented to the Basis of Bearings and the distances shown are reduced to horizontal field distances.
- This plat is subject to:
 - Reservations and exceptions as contained in the U.S. and State of Alaska Patents and acts relating thereto.
 - Easements and notes as shown on Plats of USS 1429, USS 1430, ATS 212, and Plat No. P-155.
- The portion of Beach Road added to Lots 1A, 1A1 and 1B on this plat was vacated by Craig Planning Commission Resolution PC-515-09.

HISTORY OF SURVEYS:

- USS 1429 & 1429A, survey of the exterior lines of the Craig Townsite was surveyed May 20 - June 10, 1922 by E. C. Guerin, USCE. Plat was approved Dec. 13, 1922 and Survey was accepted January 24, 1923.
- USS 1430, subdivision of the Craig Townsite Alaska was surveyed May 20 - June 10, 1922 by E. C. Guerin, USCE. Plat was approved April 2, 1923.
- Alaska Tidelands Survey No. 212 was surveyed by Hubbell & Waller Engineering Corp. September 10 - 18, 1962. Plat was recorded in the Ketchikan Recording District as Plat No. 63-1259 on July 16, 1963.
- Craig Tidelands Addition, Subdivision Plat, was surveyed September 18-26, 1966 by Hans J. Furuseth, RLS. The Plat was recorded in Vol. 1, Plats at Packet No. 155 on April 2, 1969.
- A Record of Survey was performed on August 20 - 31, 1998 by Craig L. Templin, RLS. This was recorded as Plat No. 98-49 in the Ketchikan Recording District on September 16, 1998.
- The original CRAIG RANGER STATION is an unsurveyed parcel of land bounded by USS 1429 (the exterior boundary of the City of Craig Townsite) and ATS 212 (the tidelands of Bucareli Bay and Shelter Cove). The City of Craig vacated a portion of EIGHTH STREET and added it to the CRAIG RANGER STATION by Resolution approved Oct. 19, 1964, and recorded in Book V-16, at Page 278 in Nov., 1964.

AREA SUMMARY

LOT 1B - Originally 80,169 s.f. + 892 s.f. Beach Rd. Vac. = 81,061 s.f.
 LOT 1A - Originally 6,736 s.f. + 1490 s.f. Beach Rd. Vac. = 8,226 s.f.
 LOT 1A1 - Originally 22,067 s.f. + 2,387 s.f. Beach Rd. Vac. = 24,454 s.f.
TOTAL AREA = 113,741 s.f. = 2.61 Acres

CERTIFICATE OF OWNERSHIP AND DEDICATION

We certify that we are the owners of CRAIG USFS REPLAT, that we do approve of this survey and plat and that we do for ourselves, our heirs, and assigns dedicate, donate, and convey to the public all rights-of-way / alleys / public utilities / easements and other public areas as shown hereon.

Forrest Cole 3.3.10
 Forrest Cole, Forest Supervisor Date
 U.S. Forest Service, 648 Mission Street, Ketchikan, AK 99901

NOTARY'S ACKNOWLEDGEMENT

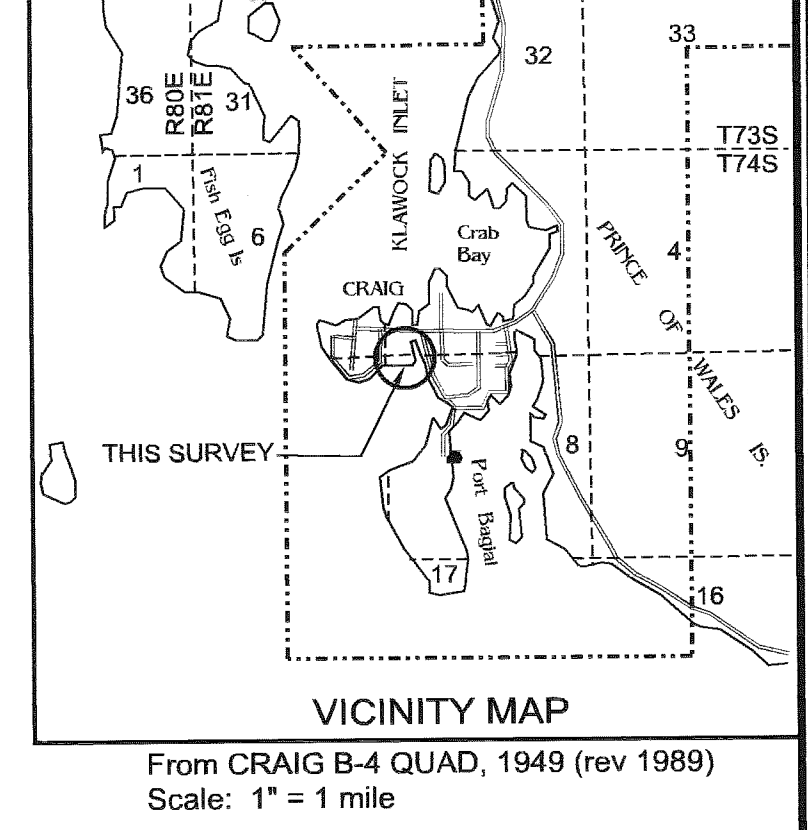
Subscribed and sworn before me this 3rd day of March, 2010.
 for:

Cynthia E. Schelin
 Notary Public for the State of Alaska
 My Commission expires _____

SURVEYOR'S CERTIFICATE

I hereby certify that I am properly registered and licensed to practice land surveying in the State of Alaska, that this plat represents a survey made by me or under my direct supervision, that the monuments shown hereon actually exist as described and that all dimensions and other details are correct.

Craig L. Templin, RLS 3491 Date: 2-10-2010



APPROVAL BY THE CITY OF CRAIG PLANNING COMMISSION

This plat has been reviewed and approved by the Craig Planning Commission in accordance with the Craig Land Development Code.

John D. [Signature] 2-25-10
 Presiding Officer - Planning Commission Date

William E. Russell 2-25-10
 Planning Commission Member Date

Ben L. [Signature] 2-16-10
 City Planning Official Date

CERTIFICATE OF IMPROVEMENTS

No improvements are required for this vacation / replat.

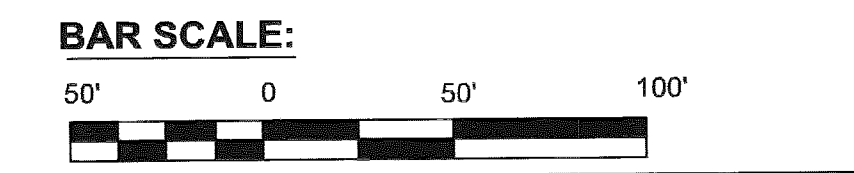
[Signature] 2/24/10
 Public Works Director Date

Ben L. [Signature] 2-16-10
 City Planning Official Date

TAX STATEMENT

I certify that all ad valorem taxes, special assessments, and other charges required by law to be placed on the tax rolls have been paid

Vicki Hamilton 2/24/10
 City Clerk Date



PLAT OF: CRAIG USFS REPLAT	
A REPLAT OF; LOT 1, BLOCK 11, USS 1430 LOTS 1 AND 1A, ATS 212 (PLAT P-155) the CRAIG RANGER STATION Parcel and the VACATION OF A PORTION OF BEACH ROAD	
CREATING LOTS 1A, 1B and 1A1	
Located within Sec. 8, T 74 S., R 81 E., CRM, Alaska KETCHIKAN RECORDING DISTRICT Containing 2.61 Acres	
Surveyed for: CITY OF CRAIG PO Box 725 CRAIG, AK. 99921	Surveyed by: Templin Land Surveying PO Box 1078 WARD COVE, AK 99928 Phone / Fax - 907-247-5120
Date of Survey: 12/10/2009	Scale: 1" = 50'
Drawing Date: 1/25/2010	Drawn by: C.L.T.
File:	

