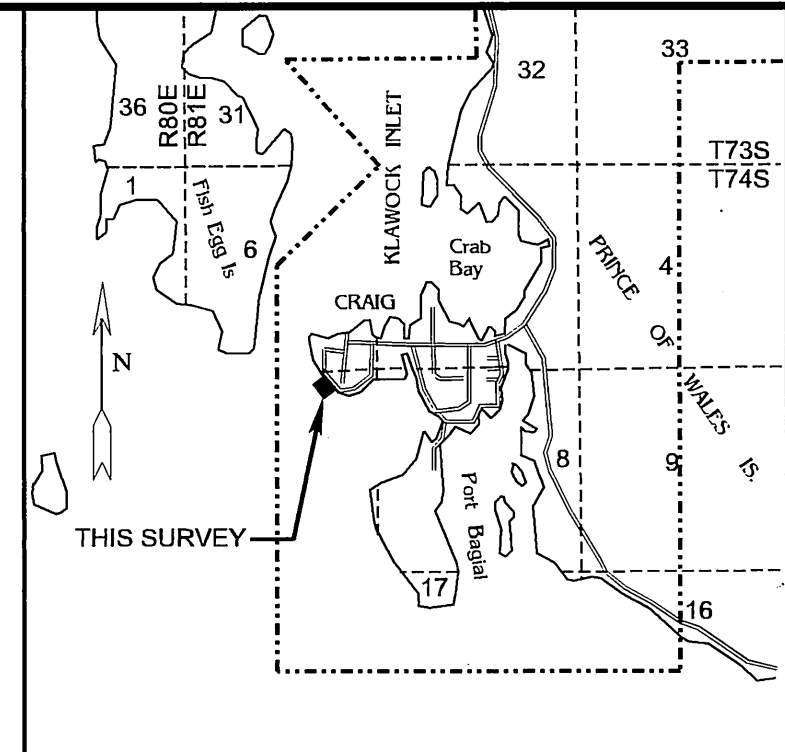
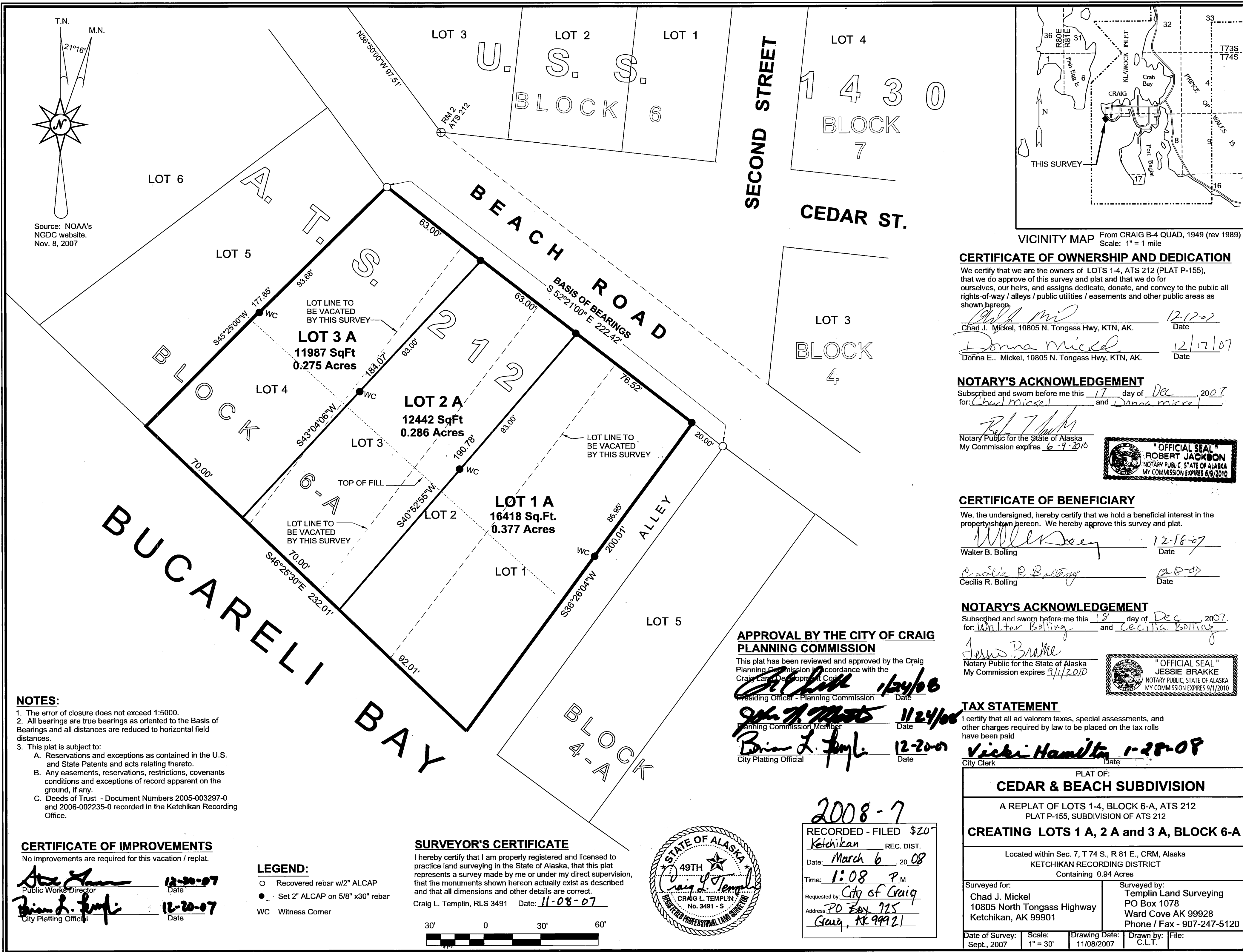


Source: NOAA's NGDC website. Nov. 8, 2007



VICINITY MAP From CRAIG B-4 QUAD, 1949 (rev 1989) Scale: 1" = 1 mile



CERTIFICATE OF OWNERSHIP AND DEDICATION

We certify that we are the owners of LOTS 1-4, ATS 212 (PLAT P-155), that we do approve of this survey and plat and that we do for ourselves, our heirs, and assigns dedicate, donate, and convey to the public all rights-of-way / alleys / public utilities / easements and other public areas as shown hereon.

Chad J. Mickel, 10805 N. Tongass Hwy, KTN, AK. Date 12-17-07
Donna E. Mickel, 10805 N. Tongass Hwy, KTN, AK. Date 12-17-07

NOTARY'S ACKNOWLEDGEMENT

Subscribed and sworn before me this 17 day of Dec, 2007 for: Chad Mickel and Donna Mickel

Notary Public for the State of Alaska My Commission expires 6-9-2010



CERTIFICATE OF BENEFICIARY

We, the undersigned, hereby certify that we hold a beneficial interest in the property shown hereon. We hereby approve this survey and plat.

Walter B. Bolling Date 12-16-07
Cecilia R. Bolling Date 12-18-07

NOTARY'S ACKNOWLEDGEMENT

Subscribed and sworn before me this 18 day of Dec, 2007 for: Walter Bolling and Cecilia Bolling

Notary Public for the State of Alaska My Commission expires 9/1/2010



TAX STATEMENT

I certify that all ad valorem taxes, special assessments, and other charges required by law to be placed on the tax rolls have been paid

Vicki Hamilton Date 1-28-08
City Clerk

APPROVAL BY THE CITY OF CRAIG PLANNING COMMISSION

This plat has been reviewed and approved by the Craig Planning Commission in accordance with the Craig Land Development Code.
Residing Officer - Planning Commission Date 1/24/08
Planning Commission Member Date 11/24/08
City Platting Official Date 12-20-07

- NOTES: 1. The error of closure does not exceed 1:5000. 2. All bearings are true bearings as oriented to the Basis of Bearings and all distances are reduced to horizontal field distances. 3. This plat is subject to: A. Reservations and exceptions as contained in the U.S. and State Patents and acts relating thereto. B. Any easements, reservations, restrictions, covenants conditions and exceptions of record apparent on the ground, if any. C. Deeds of Trust - Document Numbers 2005-003297-0 and 2006-002235-0 recorded in the Ketchikan Recording Office.

CERTIFICATE OF IMPROVEMENTS

No improvements are required for this vacation / replat.

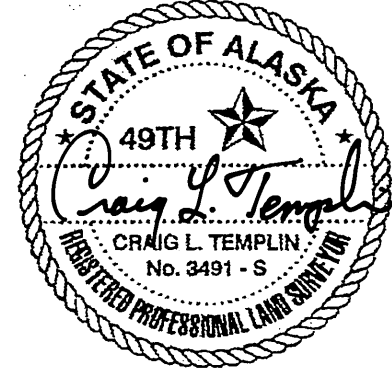
Public Works Director Date 12-20-07
City Platting Official Date 12-20-07

LEGEND:

- Recovered rebar w/2" ALCAP
- Set 2" ALCAP on 5/8" x30" rebar
- WC Witness Corner

SURVEYOR'S CERTIFICATE

I hereby certify that I am properly registered and licensed to practice land surveying in the State of Alaska, that this plat represents a survey made by me or under my direct supervision, that the monuments shown hereon actually exist as described and that all dimensions and other details are correct.
Craig L. Templin, RLS 3491 Date: 11-08-07



2008-7
RECORDED - FILED \$207
Ketchikan REC. DIST.
Date: March 6, 2008
Time: 1:08 P.M.
Requested by: City of Craig
Address: PO Box 725
Craig, AK 99921

PLAT OF: CEDAR & BEACH SUBDIVISION			
A REPLAT OF LOTS 1-4, BLOCK 6-A, ATS 212 PLAT P-155, SUBDIVISION OF ATS 212			
CREATING LOTS 1 A, 2 A and 3 A, BLOCK 6-A			
Located within Sec. 7, T 74 S., R 81 E., CRM, Alaska KETCHIKAN RECORDING DISTRICT Containing 0.94 Acres			
Surveyed for: Chad J. Mickel 10805 North Tongass Highway Ketchikan, AK 99901	Surveyed by: Templin Land Surveying PO Box 1078 Ward Cove AK 99928 Phone / Fax - 907-247-5120	Date of Survey: Sept., 2007	Scale: 1" = 30'
Drawing Date: 11/08/2007		Drawn by: C.L.T.	File: