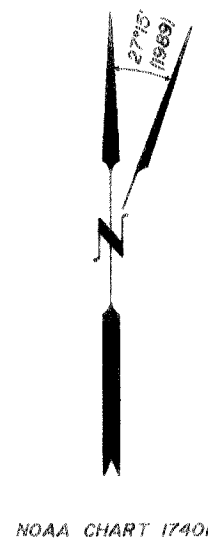


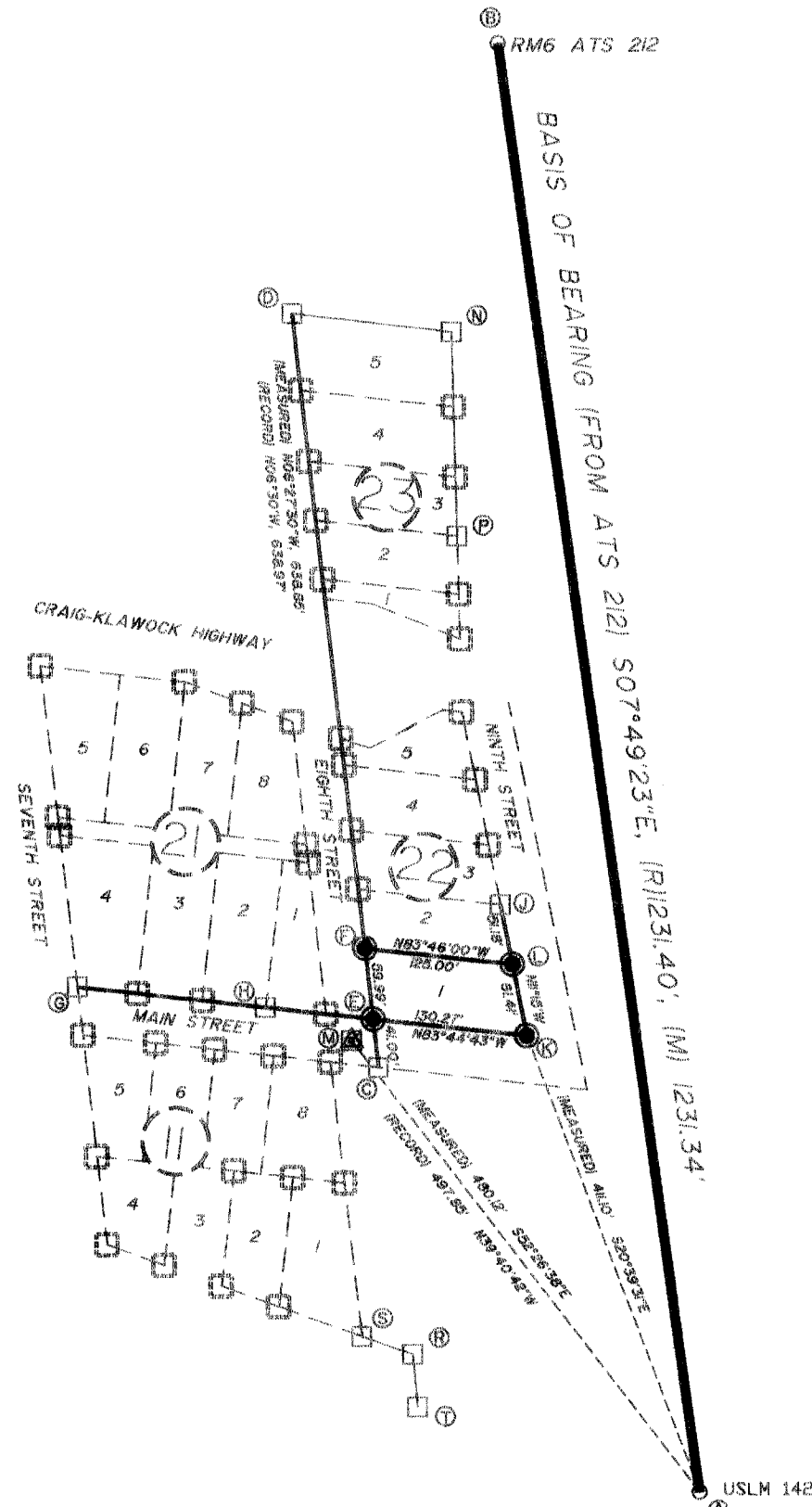
MONUMENT DESCRIPTIONS

- (A) FOUND ORIGINAL BOULDER MONUMENT SHOWING ABOUT 3-1/2" ABOVE GROUND WITH A 3-1/2" BRONZE TABLET ON TOP MARKED "X" USLM "S 1429". MONUMENT IS LOCATED ON THE SOUTHEASTERN TIP OF LAND NEAR THE EXTREME HIGH TIDE LINE NEAR THE NORTHWEST END OF THE NORTHWEST JETTY AT THE MOUTH OF SOUTH SHELTER COVE NEAR THE FOREST SERVICE RANGER STATION. NO WITNESS WAS FOUND.
- (B) FOUND 2" GALV. IRON PIPE MONUMENT WITH 2-1/2" BRASS CAP ABOUT 3" BELOW GROUND SURFACE, MARKED "RM6" "ATS 212". MONUMENT IS LOCATED IN OPEN GRASSY AREA EAST OF THE NORTH END OF EIGHTH STREET ALONG THE SOUTH SIDE OF FORD'S BOAT YARD. MR. FORD IS AN EXCELLENT CONTACT WHO WILL SHOW YOU THE MONUMENT. NO WITNESS WAS FOUND.
- (C) FOUND MONUMENT IN THE POSITION FOR CORNER 2, USS 1429. MONUMENT IS 1/2" IRON PIPE 10" BELOW GRADE. MONUMENT IS LOCATED IN A SMALL GROUP OF ALDERS WHERE A CAR IS FREQUENTLY PARKED. CONTROL MONUMENT (M) IN THE INTERSECTION OF THE CENTERLINES OF MAIN AND EIGHTH STREETS BEARS N45°12'44"W. A FIRE HYDRANT BEARS N02°33'W, 34.5'.
- (D) FOUND 5/8" REBAR MONUMENT WITH 1-1/2" ALUM CAP MARKED AS SHOWN AT LEFT. 1/2" REBAR W/O MARKINGS BEARS S67°W (HAND COMPASS), 0.89'. NO WITNESSES FOUND.
- (E) MADE THOROUGH SEARCH FOR THIS MONUMENT W/O FINDING IT. GROUND IN THE AREA WAS EXCAVATED FOR NEW FIRE HYDRANT. IN THE POSITION FOR THE CORNER, SET A 3/4" ALUMINUM DRIVE ROD 6 FEET INTO THE GROUND WITH A 3-1/4" ALUMINUM CAP ON TOP MARKED AS SHOWN AT LEFT. FIRE HYDRANT BEARS 154° Az., 7.0'. ALUMINUM FENCE POST BEARS SOUTH, 1.0'. ORIGINAL MONUMENT AT INTERSECTION OF THE CENTERLINES OF MAIN AND EIGHTH STREETS BEARS S44°57'28"W, 25.67'.
- (F) MADE THOROUGH SEARCH FOR THIS MONUMENT W/O FINDING IT. IN THE POSITION FOR THE CORNER, SET A 3/4" ALUMINUM DRIVE ROD 6 FEET INTO THE GROUND WITH A 3-1/4" ALUMINUM CAP ON TOP MARKED AS SHOWN AT LEFT. ALUMINUM FENCE POST BEARS S30°E, 1.8'. MONUMENT FALLS ALONG THE SOUTHWEST SIDE OF A 28" SPRUCE TREE IN THE ROOT COLLAR.
- (G) FOUND THE SOUTHWEST CORNER OF BLOCK 21, A 2" IRON PIPE.
- (H) FOUND TWO MONUMENTS AT THE SW COR OF LOT 1 BLOCK 21. THEY ARE 0.25' APART, ON A BEARING OF S16°15'W. THEY DON'T DEFINE A POINT, SO WERE USED AS COLLATERAL EVIDENCE. THE NORTHERLY MONUMENT IS A 1/2" IRON PIPE. THE SOUTHERLY IS A 5/8" REBAR.
- (J) FOUND A 5/8" REBAR MONUMENT AT THE POSITION FOR THE CORNER OF LOTS 2 AND 3, BLOCK 22. IT IS FIRMLY SET, WITH 1-1/2" ALUMINUM CAP NEARLY FLUSH WITH THE GROUND, AND MARKED AS SHOWN AT LEFT. MONUMENT IS NEAR THE NORTH SIDE OF A SIDEWALK AT THE EDGE OF A PARKING SPOT.

MONUMENT DESCRIPTIONS
CONTINUED ON PAGE 2



NOAA CHART 17401



NOTES

FOUND U.S. LOCATION MONUMENT 1429 AS OFFICIALLY DESCRIBED BUT WITH THE ADDITION OF A BRONZE TABLET MARKED "X" USLM "S1429".
 FOUND RM6, ATS 212 AS DESCRIBED IN ATS 212 RECORD. USED THE LINE BETWEEN THESE MONUMENTS AS "BASIS OF BEARING" FOR THIS PROJECT. RECORD BEARING FROM ATS 212 IS S07°49'23"E, (CALCULATED) 1251.40 FEET.
 FOUND CORNER 2 OF USS 1429.
 FOUND THE NORTHWEST CORNER OF BLOCK 21.
 CORNERS SET ALONG THAT LINE BETWEEN THEM WERE PROPORTIONED, INCLUDING THE SOUTHWEST CORNER OF BLOCK 22.
 FOUND THE SOUTHWEST CORNER OF BLOCK 21.
 EXTENDED A LINE FROM THE SOUTHWEST CORNER OF BLOCK 21 THROUGH THE PROPORTIONED POSITION FOR THE SW CORNER OF BLOCK 22 TO DETERMINE THE POSITION FOR THE SOUTHERN LINE OF BLOCK 22.
 FOUND TWO MONUMENTS AT THE SW COR OF LOT 1 BLOCK 21. THEY ARE 0.25' APART, ON THE BEARING S16°15'W. THEY DON'T DEFINE A POINT, SO WERE USED AS COLLATERAL EVIDENCE TO VERIFY THE CALCULATED POSITION OF THE SOUTHERN LINE OF BLOCKS 21 AND 22. THE NORTHERN MONUMENT, A 1/2" IRON PIPE, FALLS 0.04', S 6°15'W FROM THE CALCULATED LINE. THE OTHER MONUMENT IS A 5/8" REBAR W/ ALUMINUM CAP.
 FOUND SOUTHEAST COR LOT 3 BLOCK 22. LACKING OTHER SOLID EVIDENCE OF THE BEARING OF THE EASTERN LINE OF BLOCK 22, RECORD BEARING WAS USED FROM THIS MONUMENT TO INTERCEPT THE SOUTHERN LINE OF BLOCK 22. THIS INTERSECTION POSITION WAS USED TO DEFINE THE POSITION OF THE SOUTHEAST CORNER OF BLOCK 22. THE INTERMEDIATE LOT CORNER WAS PROPORTIONED BETWEEN THEM.
 FOUND PIPE MONUMENT WITH BRASS CAP AT THE INTERSECTION OF THE CENTERLINES OF MAIN AND 8th STREETS, 10 INCHES BELOW SURFACE, MARKED AS IN THE OFFICIAL RECORD FOR USS 1429. THE TIE FROM THIS MONUMENT TO THE SOUTHWEST CORNER OF BLOCK 22 IS 25.67', N44°57'28"E AS SET. THE TIE AS CALCULATED FROM RECORD IS 25.60', N44°52'30"E.
 THIS SURVEY IS TO DETERMINE THE POSITION OF LOT 1 BLOCK 22 OF WEST CRAIG TOWNSITE AS SHOWN IN USS 1429 WHICH IS ON FILE IN THE USDI-BUREAU OF LAND MANAGEMENT OFFICIAL RECORDS. SUPPLEMENTARY RECORDS OF SURVEY WERE USED WHICH WERE ON FILE IN THE OFFICES OF GREG SCHEFF AND ASSOCIATES, CHARLES POOL AND ASSOCIATES, RBM ENGINEERING INC. OF KETCHIKAN, AND THE CITY OF CRAIG.

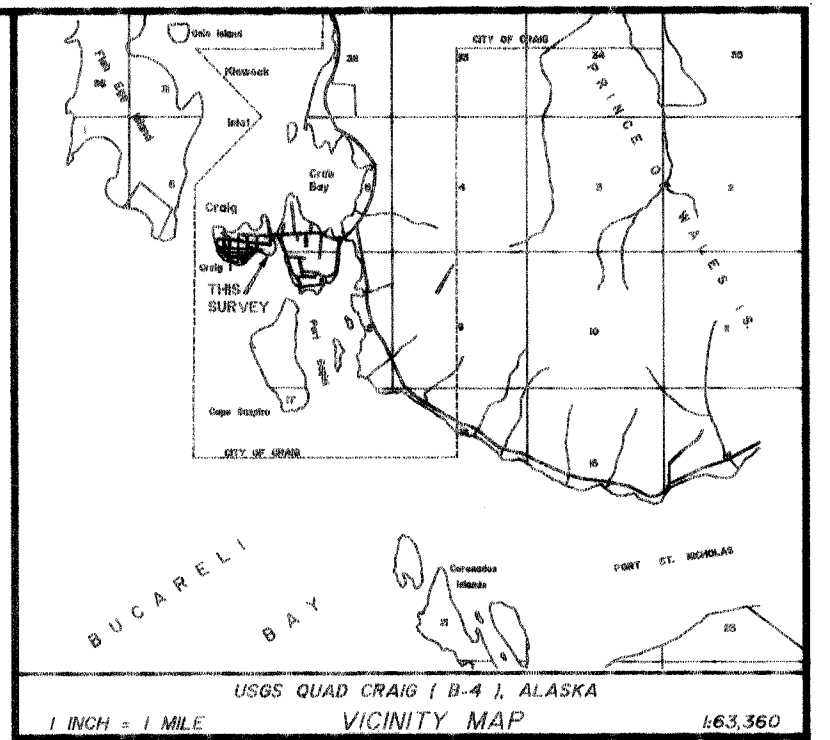
LEGEND

- FOUND BRASS CAP MONUMENT
- FOUND REBAR OR PIPE MONUMENT
- △ IRON POST REFERENCE MONUMENT AT THE INTERSECTIONS OF STREET CENTERLINES AS DESCRIBED ON THE OFFICIAL SURVEY PLAT FOR USS 1429.
- MONUMENT SEARCHED FOR BUT NOT FOUND
- ◻ A FOUND MONUMENT USED AS CONTROL OR EVIDENCE FOR THIS SURVEY
- MONUMENT SET THIS SURVEY
- "TIE" LINES BETWEEN MONUMENTS.
- PROTRACTED, PICTORIAL LINES, NOT DETERMINED BY THIS SURVEY.
- ① REFERENCE LETTERS USED TO CROSS-REFERENCE THE WRITTEN DESCRIPTION OF A MONUMENT WITH THE PICTORIAL LOCATION ON THE PLAT.

LESSEE CERTIFICATE

I, THE UNDERSIGNED, HEREBY CERTIFY THAT THIS SURVEY WAS PERFORMED UNDER MY DIRECTION FOR THE PURPOSE OF ADMINISTERING NATIONAL FOREST LANDS.

For Larry H. Mesheff 12-8-97
 BRADLEY POWELL
 FOREST SUPERVISOR
 TONGASS NATIONAL FOREST
 FEDERAL BUILDING
 KETCHIKAN, ALASKA 99901



USGS QUAD CRAIG 1-B-4, ALASKA
VICINITY MAP 1:63,360

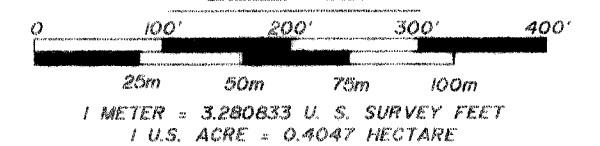
SURVEYORS CERTIFICATE

I HEREBY CERTIFY THAT I AM PROPERLY REGISTERED AND LICENSED TO PRACTICE LAND SURVEYING IN THE STATE OF ALASKA, THAT THIS PLAT REPRESENTS A SURVEY MADE BY ME OR UNDER MY DIRECT SUPERVISION, THAT THE MONUMENTS SHOWN HEREON ACTUALLY EXIST AS DESCRIBED, AND THAT ALL DIMENSIONS AND OTHER DETAILS ARE CORRECT.

DATE 12-1-97 REGISTRATION NUMBER 2072



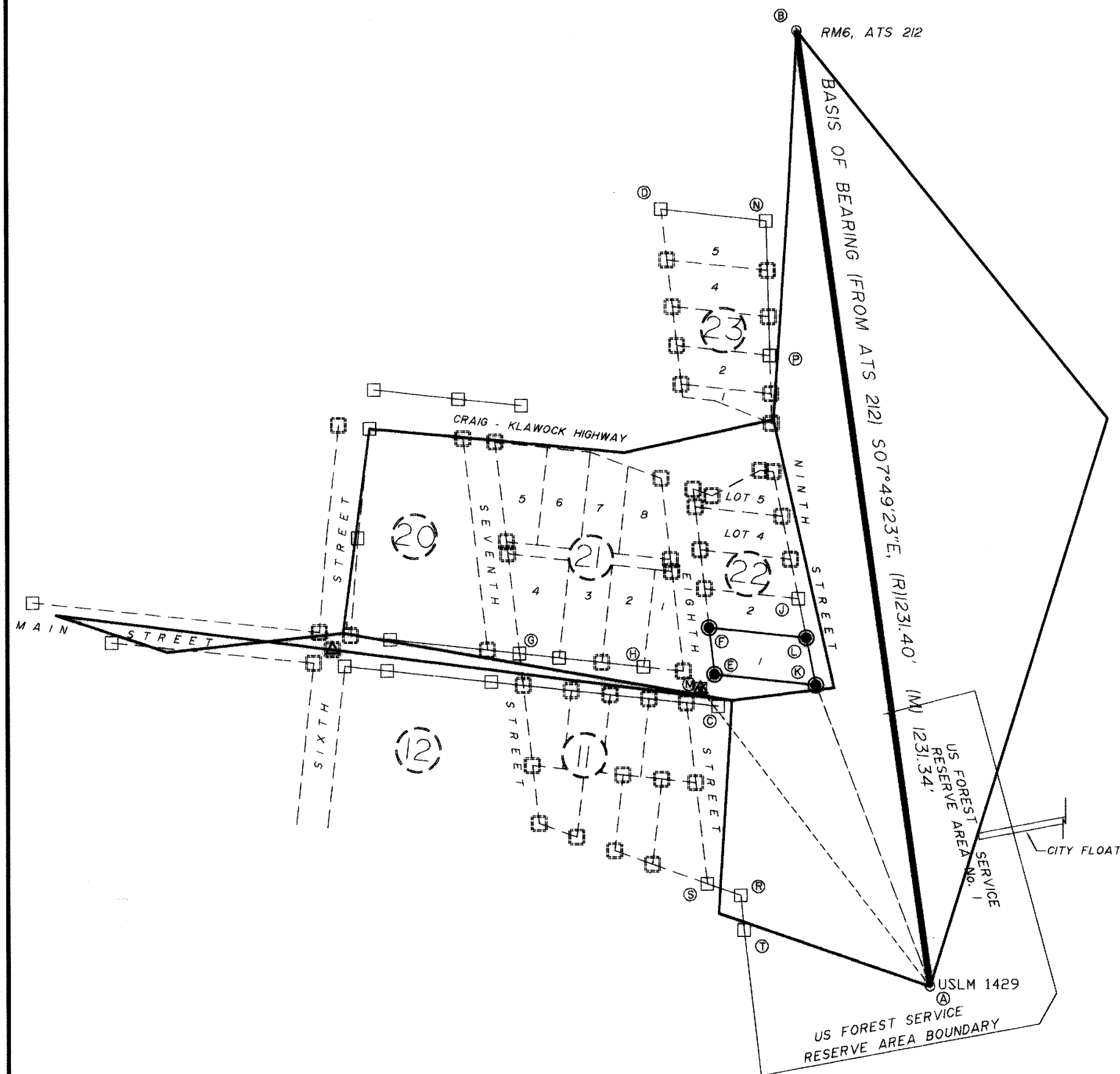
BAR SCALE



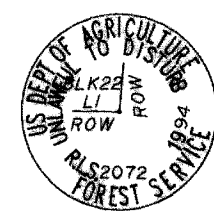
DATE OF SURVEY Beginning <u>Sept. 9, 1994</u> Ending <u>Sept. 16, 1994</u>	NAME OF SURVEYOR STEPHEN G. MARTIN FEDERAL BUILDING KETCHIKAN, ALASKA 99901
DEPARTMENT OF AGRICULTURE FOREST SERVICE - KETCHIKAN AREA FEDERAL BUILDING KETCHIKAN, ALASKA	
RECORD OF SURVEY THIS SURVEY DOES NOT CONSTITUTE A SUBDIVISION AS DEFINED BY AS 40.18.0121.	
LOT 1, BLOCK 22 USS 1429, CRAIG TOWNSITE WEST CRAIG, ALASKA IN PORTIONS OF PROTRACTED SECTIONS 5, 6, 7 & 8, T74S, R81E COPPER RIVER MERIDIAN, ALASKA	
DRAWN BY S.G. MARTIN	KETCHIKAN RECORDING DISTRICT
DATE: <u>October 28, 1997</u>	CHECKED: FILE NO.
SCALE 1 in. = 100 ft.	KMW
SHEET 1 OF 2	

KETCHIKAN 97-89

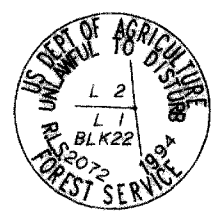
SURVEY DIAGRAM



MONUMENT DESCRIPTIONS, CONTINUED FROM PAGE 1 OF 2



(K) FOUND 5/8" REBAR WITH ALUMINUM CAP (STAMPED AS SHOWN AT RIGHT) IN A HORIZONTAL POSITION 10" BELOW THE SURFACE IN MUD NEAR POWER POLE. DISTURBED LOCATION.
SET A 3/4" ALUMINUM DRIVE ROD 6 FT INTO THE GROUND WITH 3-1/4" ALUMINUM CAP MARKED AS SHOWN AT LEFT.
ALUMINUM FENCE POST BEARS S60°E, 1.0'.
SOUTH END OF A CHAIN LINKED FENCE BEARS N70°W, 2.8'.
12" POWER POLE NO. 62 BEARS S02°W, 4.6'.
12" BRACE FOR POWER POLE NO. 62 BEARS S72°W, 19.5'.

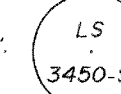


(L) FOUND 1/2" REBAR LOOSE IN MUD OF STREET DITCH. MONUMENT TIPPED OVER, OUT OF POSITION.
AT THE PROPORTIONED POSITION, SET A 3/4" ALUMINUM DRIVE ROD 6 FT INTO THE GROUND WITH 3-1/4" ALUMINUM CAP MARKED AS SHOWN AT LEFT.
ALUMINUM FENCE POST BEARS S60°E, 1.0'.
CORNER OF CHAIN LINKED FENCE (FENCE BRS. SOUTHERLY AND WESTERLY) BEARS N74°W, 2.0'.

(M) FOUND A 1" IRON PIPE MONUMENT WITH BRASS CAP MARKED "X" 10" BELOW SURFACE OF MAIN STREET AT THE INTERSECTION OF THE CENTERLINES OF MAIN AND EIGHTH STREETS AS DESCRIBED IN THE OFFICIAL NOTES FOR USS 1429. THE SOUTHWEST CORNER OF BLOCK 22, SET THIS SURVEY, BEARS N44°57'28"E, 25.67'.

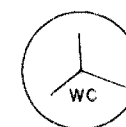
(N) FOUND 5/8" REBAR. MONUMENT BENT.

(P) FOUND 5/8" REBAR WITH PLASTIC CAP MARKED AS SHOWN AT RIGHT. A SECOND MON, A 5/8" REBAR BRS. WEST, 2.22'.



(R) FOUND 1/2" IRON PIPE 3" BELOW SURFACE OF GRASS, ON AN EXTENSION OF THE CENTERLINE OF A FOREST SERVICE HOUSE, 10' WEST FROM THE WESTERN END OF THE HOUSE.

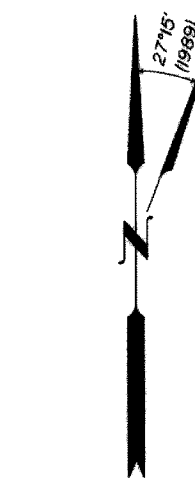
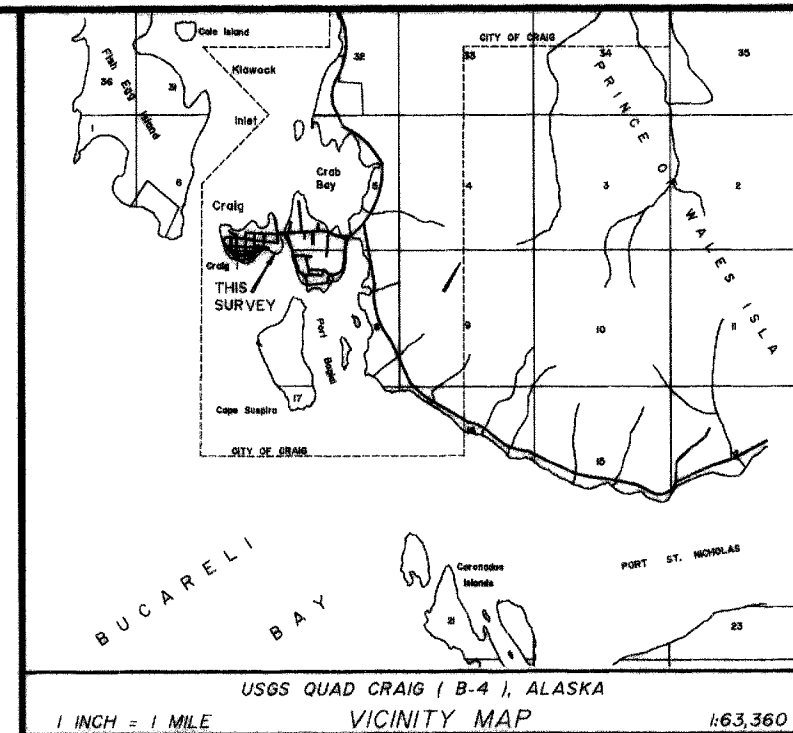
(S) FOUND 2" BRASS CAP ON PIPE, BELOW GRADE, PROTECTED IN A PIECE OF CORRUGATED METAL CULVERT PIPE STANDING VERTICALLY WITH WOODEN CAP, EASTERLY FROM THE SOUTHERN END OF A HOUSE TRAILER.



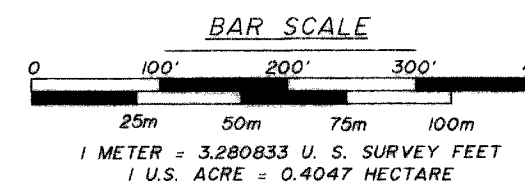
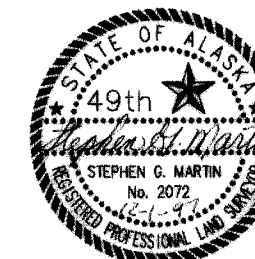
(T) FOUND A 2" BRASS TABLET SET IN CONCRETE FLUSH WITH GROUND IN GRASS. NOT MAGNETIC.
USLM 1429 BEARS S73°09'07"E, 248.03'.

LEGEND

- FOUND BRASS CAP MONUMENT
- FOUND REBAR OR PIPE MONUMENT
- ▲ IRON POST REFERENCE MONUMENT AT THE INTERSECTIONS OF STREET CENTERLINES AS DESCRIBED IN THE OFFICIAL SURVEY PLAT FOR USS 1429.
- MONUMENT LOCATION SEARCHED BUT NOT FOUND
- A FOUND MONUMENT USED AS CONTROL OR EVIDENCE FOR THIS SURVEY
- MONUMENT SET THIS SURVEY
- ALIGNMENT OF CONTROL SURVEY FOR THIS PROJECT
- Ⓢ REFERENCE LETTERS USED TO CROSS-REFERENCE THE WRITTEN DESCRIPTION OF A MONUMENT WITH THE PICTORIAL LOCATION ON THE PLAT.



NOAA CHART 17401



DATE OF SURVEY Beginning <u>Sept. 11, 1994</u> Ending <u>Sept. 16, 1994</u>	NAME OF SURVEYOR <u>STEPHEN G. MARTIN</u> FEDERAL BUILDING KETCHIKAN, ALASKA 99901
DEPARTMENT OF AGRICULTURE FOREST SERVICE - KETCHIKAN AREA FEDERAL BUILDING KETCHIKAN, ALASKA	
RECORD OF SURVEY THIS SURVEY DOES NOT CONSTITUTE A SUBDIVISION AS DEFINED BY AS 40.15.1902I. LOT 1, BLOCK 22 USS 1429, CRAIG TOWNSITE WEST CRAIG, ALASKA IN PORTIONS OF PROTRACTED SECTIONS 5, 6, 7 & 8, T74S, R8E COPPER RIVER MERIDIAN, ALASKA	
DRAWN BY <u>S.G. MARTIN</u>	KETCHIKAN RECORDING DISTRICT
DATE: <u>October 28, 1997</u>	CHECKED: FILE NO.
SCALE 1 in. = 100 ft.	KMW

97-89
RECORDED - FILED 25
Ketchikan REG. DIST.
DATE Dec. 8, 1997
TIME 2:12 P.M.
Requested by Forest
Address Servi

SHEET 2 OF 2