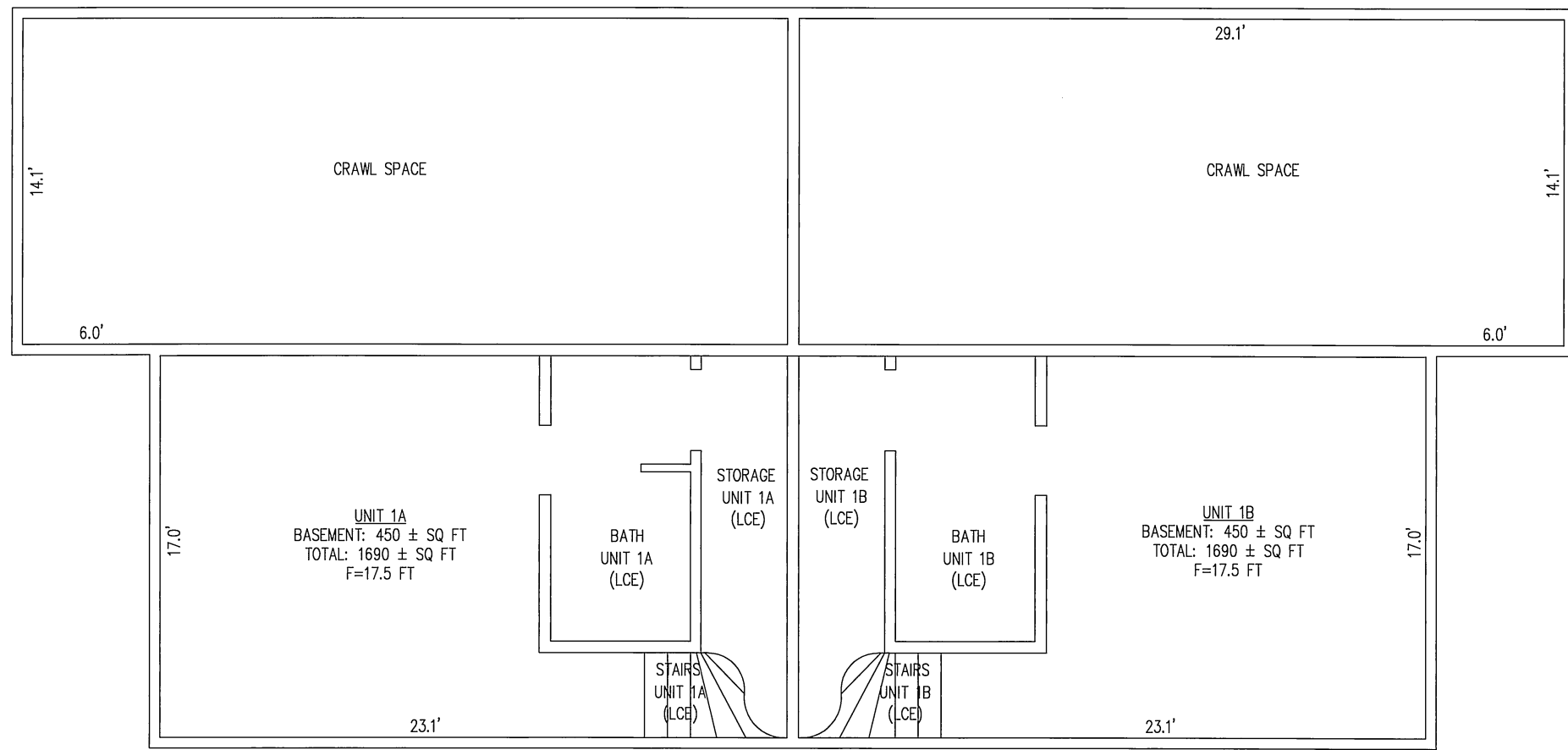
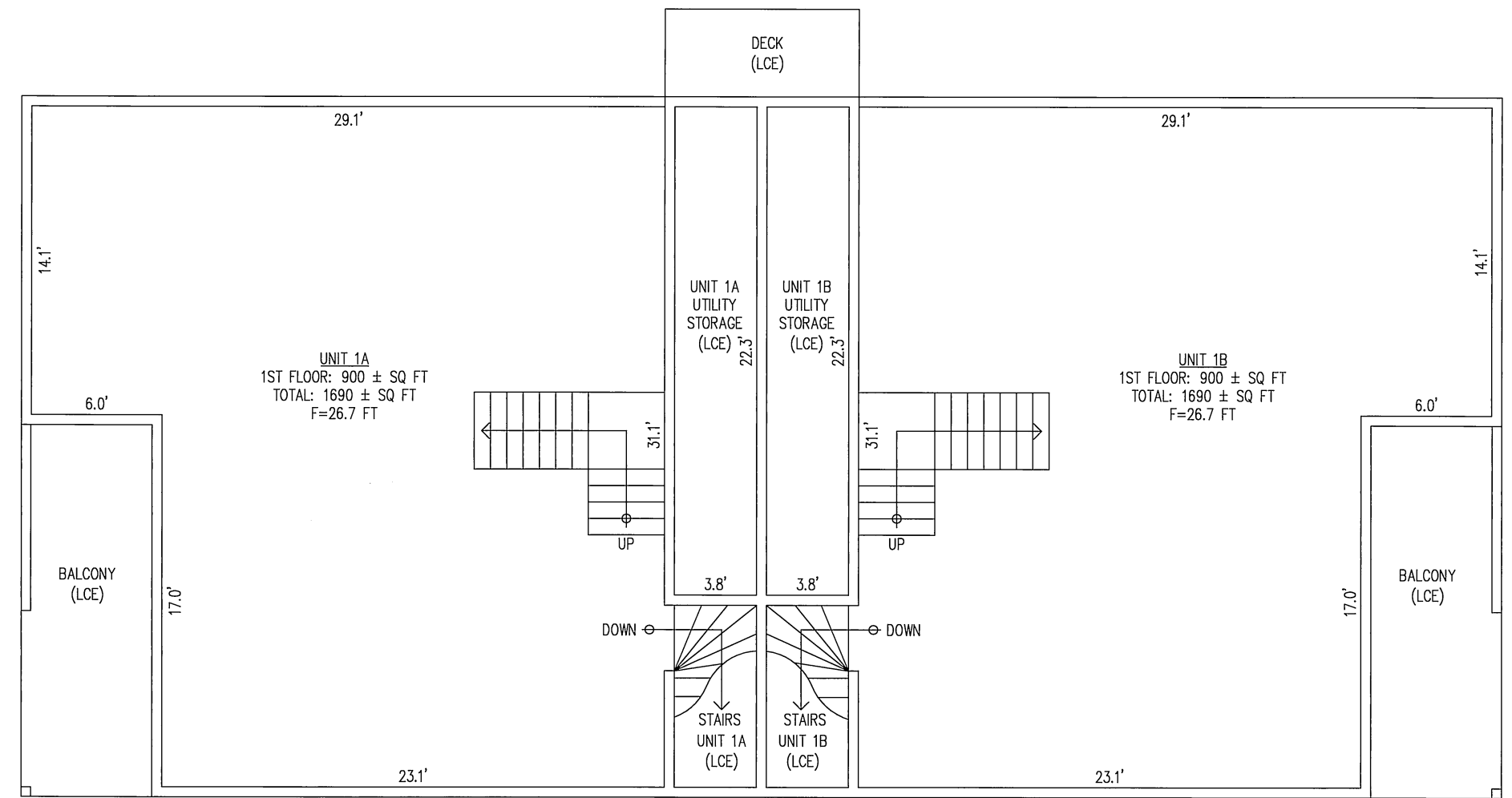
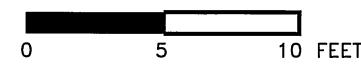




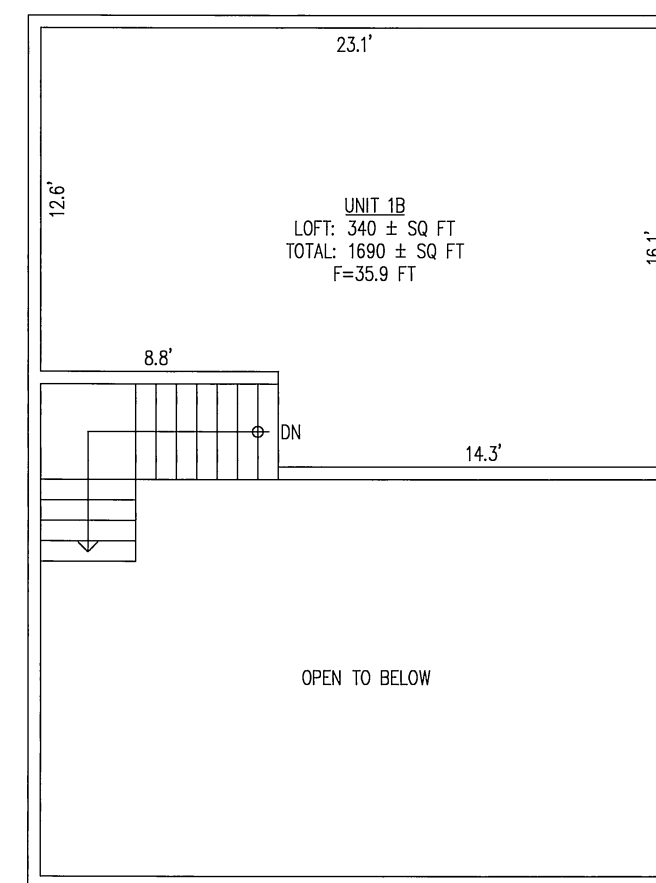
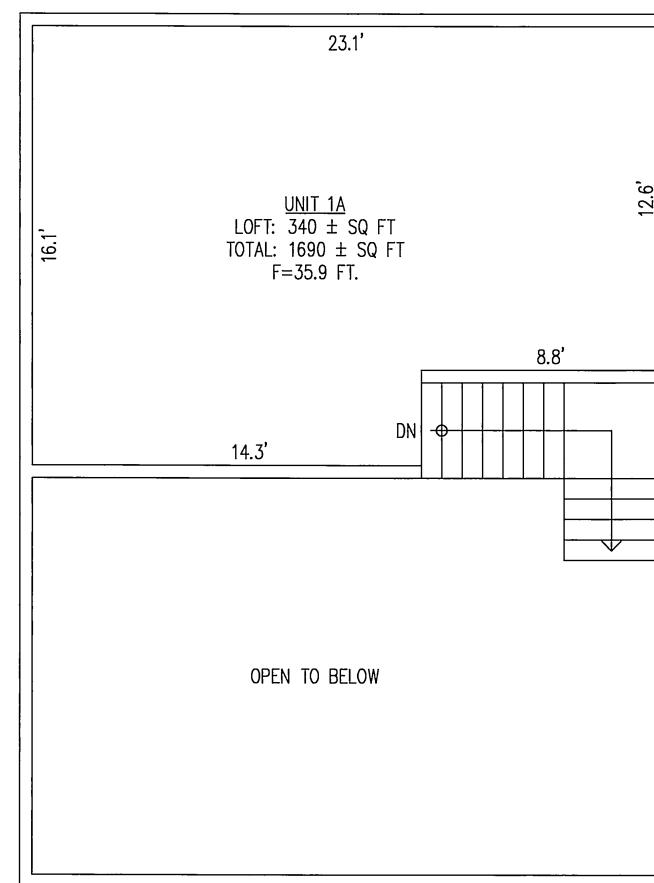
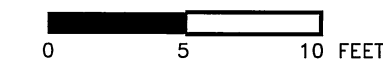
\\Server-1\common\Projects\2007\072759 Kirkman Condo Survey\dwg\Final drawings\1\_2002.dwg, 4/4/2008 9:37:16 AM, HP, designjet\_1090C



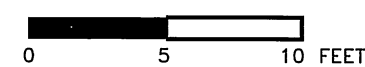
BUILDING 1 - BASEMENT



BUILDING 1 - LEVEL 1  
BUILDINGS 2, 3, & 4 SIMILAR



BUILDING 1 - LOFT  
BUILDINGS 2, 3, & 4 SIMILAR



2008-10  
Ketchikan REC DIST \$25  
DATE April 8 2008  
TIME 1:10 P  
Requested By R.M. Engineering  
Address

KETCHIKAN RECORDING DISTRICT

CRAIG HARBOR HOMES  
A CONDOMINIUM

A CONDOMINIUM PLAT OF:  
CRAIG HOMES SUBDIVISION  
LOT 1, CREATING  
UNITS 1A, 1B, AIR SPACE UNITS 2, 3 & 4

CLIENT: THOMAS R. KIRKMAN  
P.O. BOX 553  
CRAIG, AK 99921

**RSM**  
R&M ENGINEERING-KETCHIKAN, INC.  
355 CARLANNA LAKE RD., SUITE 200 Phone: (907) 225-7917  
KETCHIKAN, ALASKA 99901 Fax: (907) 225-3441

DATE: 4/04/08	DRAWN BY: T.S.S.	JOB NO. 072759
SCALE: AS NOTED	APPRVD BY: L.R.	SHEET 2 OF 2