

OWNERSHIP AND DEDICATION:

I hereby certify that I am the owner of Lot 3 & 4 of Block 7 of United States Survey 1430 in the City of Craig, Alaska; and that I cause the same to be surveyed and platted as shown on this map and subdivision plat and I do for myself, my heirs and assigns, hereby dedicate, donate and convey to the public use forever all the streets, alleys, Right-of-Ways and easements shown hereon or of record not shown hereon.

Robert Lofton *Alisa Lofton*

UNITED STATES OF AMERICA, }
STATE OF ALASKA, } ss.

Subscribed and sworn to me this 6th day of December, 1988.

William Fagan 3-23-91
Notary for Alaska My Commission Expires

Personally appeared *Robert Lofton and Alisa Lofton*

**CERTIFICATE OF APPROVAL
STATE OF ALASKA
DEPARTMENT OF ENVIRONMENTAL QUALITY:**

This subdivision has been reviewed in accordance with 18AAC 72.065 and is approved subject to any noted restrictions.

William Fagan (Env. Eng.) 12-12-88
State of Alaska, Department of Environmental Quality

TAX STATEMENT:

I hereby certify that all ad valorem taxes, special assessments, and other charges required by law to be placed on the tax roll have been paid.

Rob Gray 12-6-88
City Clerk Date

IMPROVEMENTS STATEMENT:

All improvements have been examined and approved by the City of Craig, Alaska this 14 day of DECEMBER 1988.

Mike McKinnis
Official for the City of Craig, Alaska

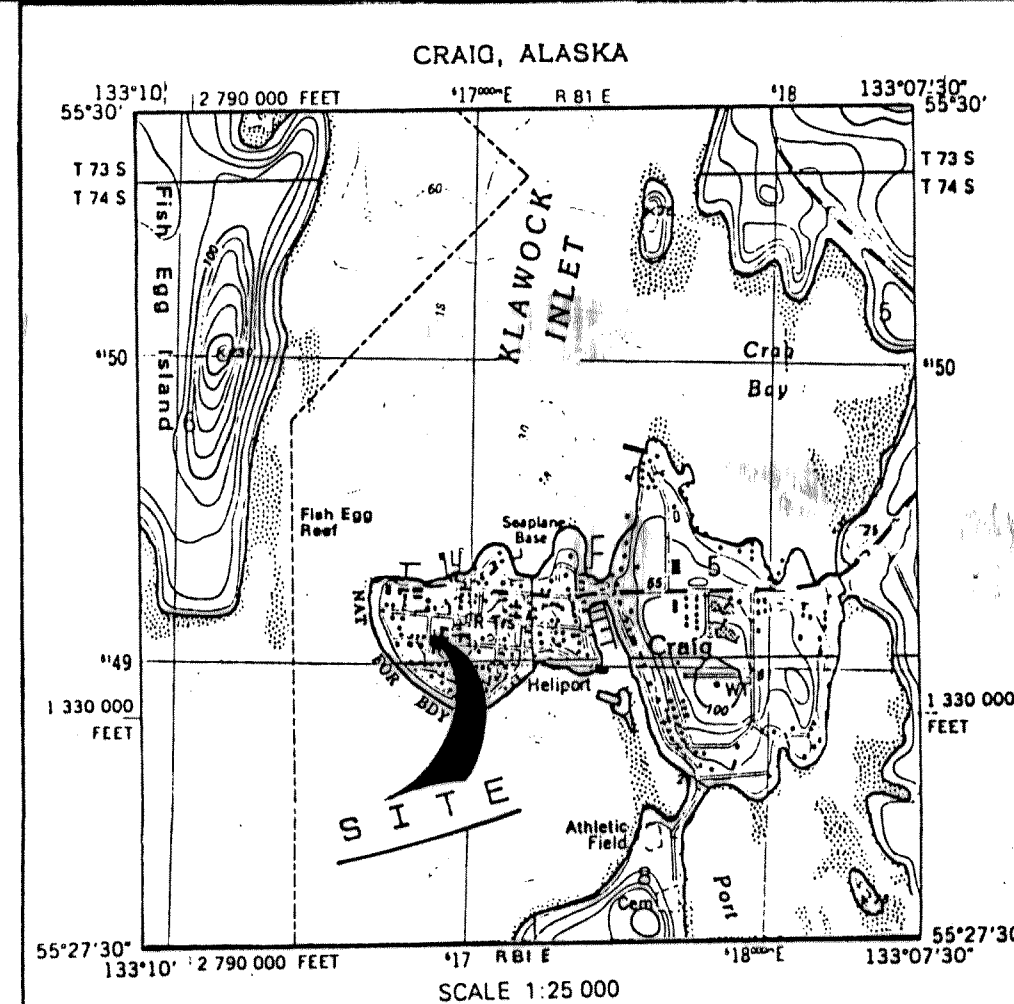
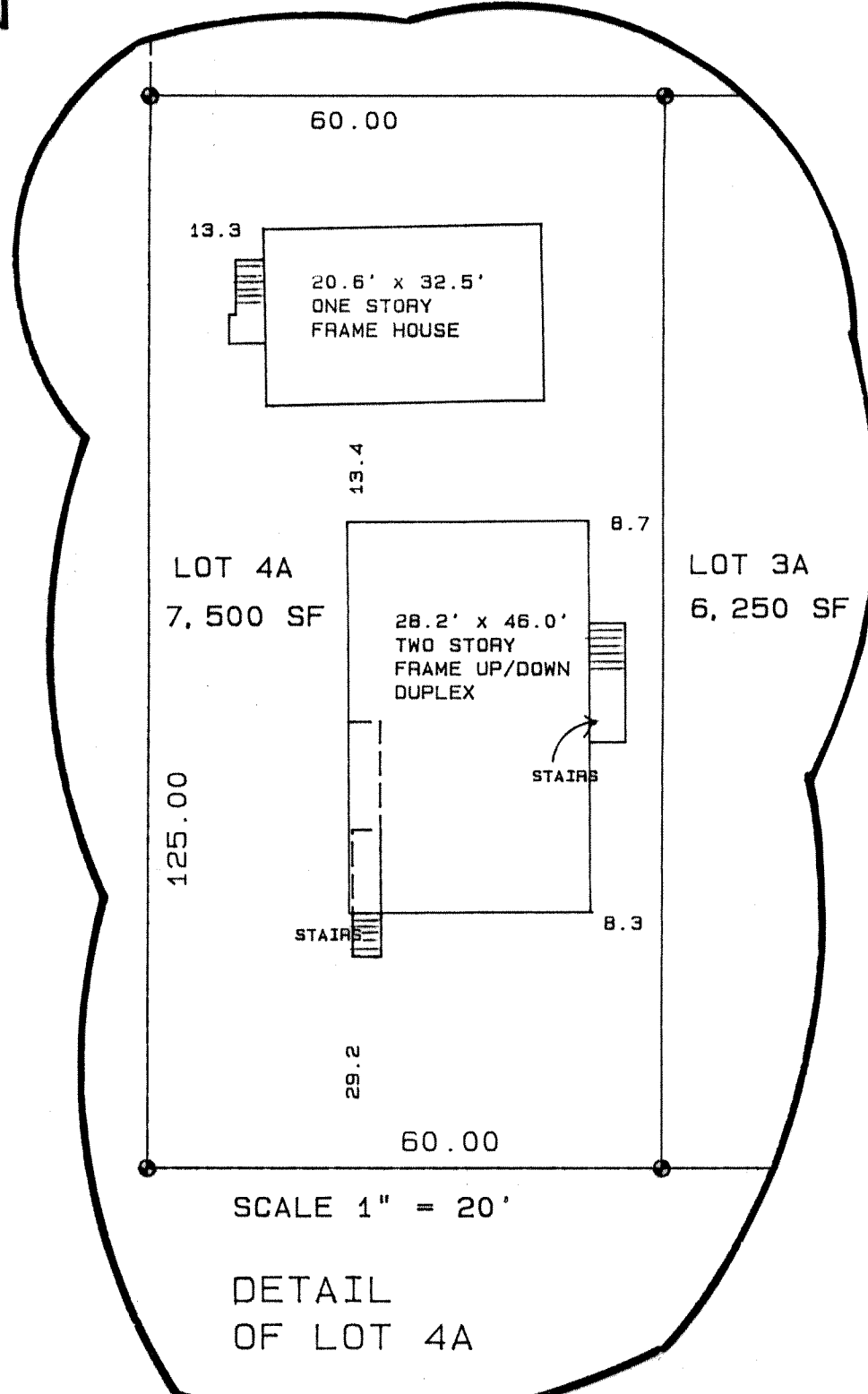
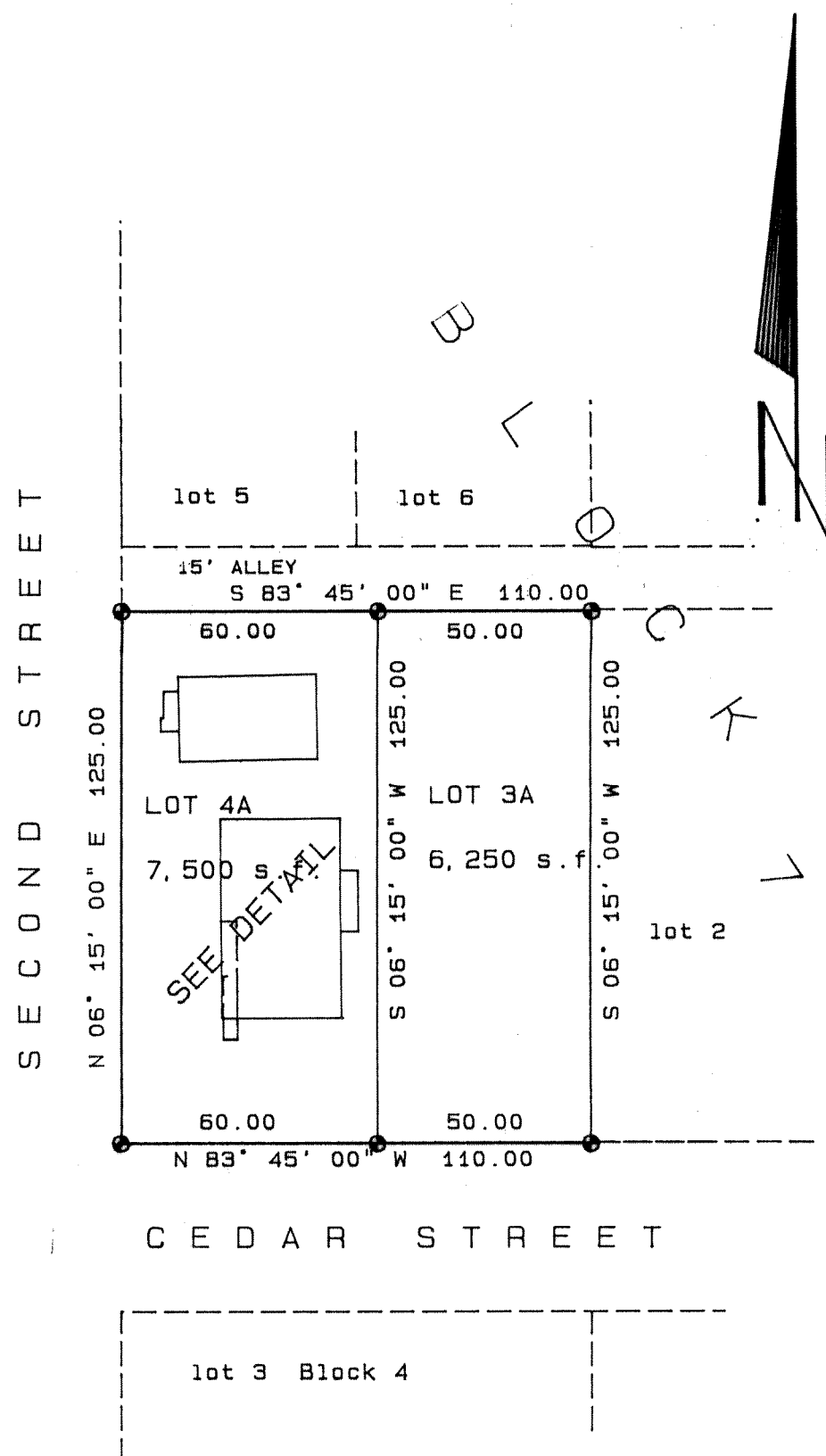
APPROVAL SIGNATURES

This final subdivision plat has been reviewed and approved in accordance with the Craig Land Development Code - Subdivision Ordinance. All dedications to the public have been inspected and accepted by the City of Craig.

Forcella Pallakop 12/14/88
City Platting Official Date

Duzy Mickelson 12/14/88
Presiding Officer Date
-- Planning Commission

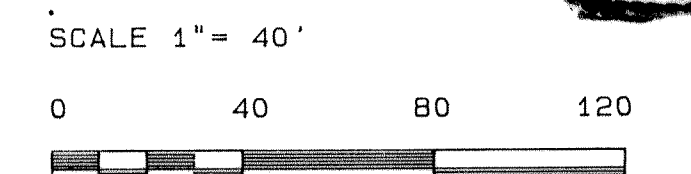
Raymond Aice 12/14/88
Planning Commission Member Date



VICINITY MAP

SURVEYOR'S CERTIFICATE:
I, Herman J. Kaiser, registered surveyor in and for the State of Alaska, hereby certify that this survey was made by me or under my direct supervision and that corner monuments as shown were located or set and that all dimensions shown are true and correct.

Herman J. Kaiser
Herman J. Kaiser, Registered Land Surveyor
Registration Number 3690-S, Alaska



- NOTES:**
- This subdivision has been approved by the Alaska Department of Environmental Conservation for wastewater discharges to the City of Craig, Alaska collector sewer system only. Other means of wastewater disposal are prohibited.
 - Property corners shown as set during this survey are set at that point computed from Kaiser Survey Technology control surveys of Craig, Alaska. Therefrom, the Southwestern most corner of lot 4A, Block 7, U.S. Survey No. 1430 lies S 88° 37' 29" W (BASIS OF BEARING) a distance of 1834.35 feet from U.S.L.M. No. 1429.

- LEGEND:**
- PROPERTY CORNER MONUMENT SET.
 - 2" ALUM. CAP ON # 5 REBAR.

88-43
RECORDED - FILED 20
Ketchikan REC. DIST.
DATE December 14, 1988
TIME 3:33 P.M.
Requested by City of Craig
Address Po Box 23
Craig, AK 99921

A RESUBDIVISION OF
**LOTS 3 & 4 BLOCK 7
CRAIG TOWNSITE, ALASKA**
U.S. SURVEY 1430 - K.R.D., KETCHIKAN, AK

ROBERT and ALISA LOFTON

**KAISER SURVEY
TECHNOLOGY**
professional surveyors and planners

P. O. Box 412 Klawock, Alaska 99925 phone (907) 755-2987

Date: 28 NOV 1988	Draw Chk	Job # 88-54
	FB # S88-57	KRD No.

KETCHIKAN 88-43