

OWNERSHIP AND DEDICATION:

I hereby certify that I am the owner of Lots 5 & 6 of Block 9 of United States Survey 1430 in the City of Craig, Alaska; and that I cause the same to be surveyed and platted as shown on this map and subdivision plat and I do for myself, my heirs and assigns, hereby dedicate, donate and convey to the public use forever all the streets, alleys, Right-of-Ways and easements shown hereon or of record not shown hereon.

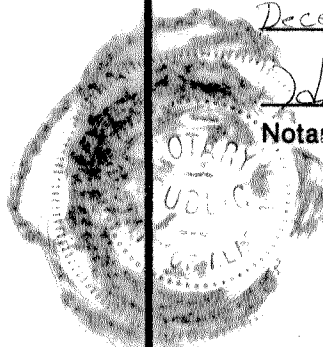
Helen Voth Ray C. Voth

UNITED STATES OF AMERICA, }
STATE OF ALASKA, } ss.

Subscribed and sworn to me this 6th day of December, 1988.

Helen Gray 3-23-91
Notary for Alaska My Commission Expires

personally appeared Helen Voth and Ray C. Voth



**CERTIFICATE OF APPROVAL
STATE OF ALASKA
DEPARTMENT OF ENVIRONMENTAL QUALITY:**

This subdivision has been reviewed in accordance with 18AAC 72.065 and is approved subject to any noted restrictions.

William Hagon (Env. Eng.) 12-12-88
State of Alaska, Department of Environmental Quality

TAX STATEMENT: Tax exempt - Senior Citizen

I hereby certify that all ad valorem taxes, special assessments, and other charges required by law to be placed on the tax roll have been paid.

Helen Gray 12-6-88
City Clerk Date

IMPROVEMENTS STATEMENT:

All improvements have been examined and approved by the City of Craig, Alaska this 14 day of December 1988.

Mike McKinens
Official for the City of Craig, Alaska

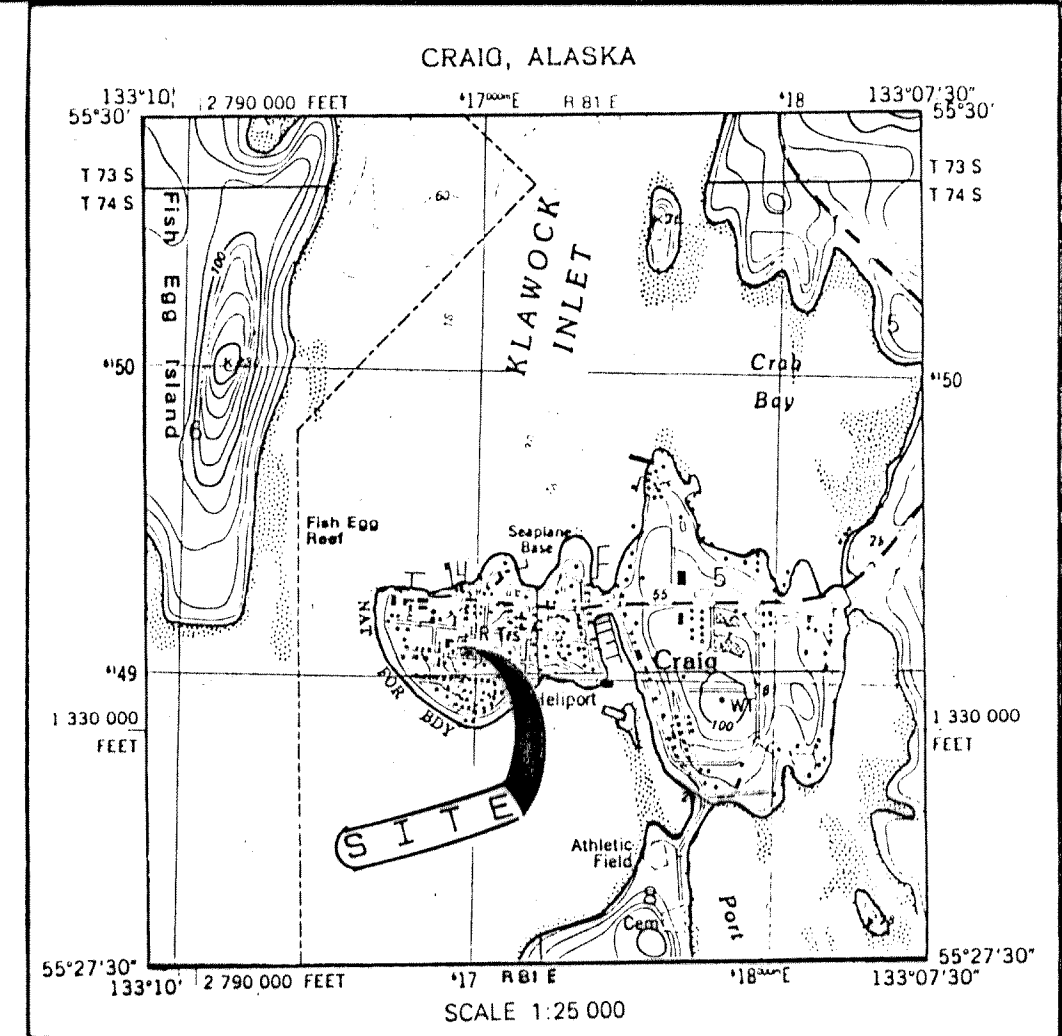
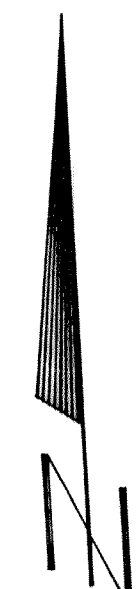
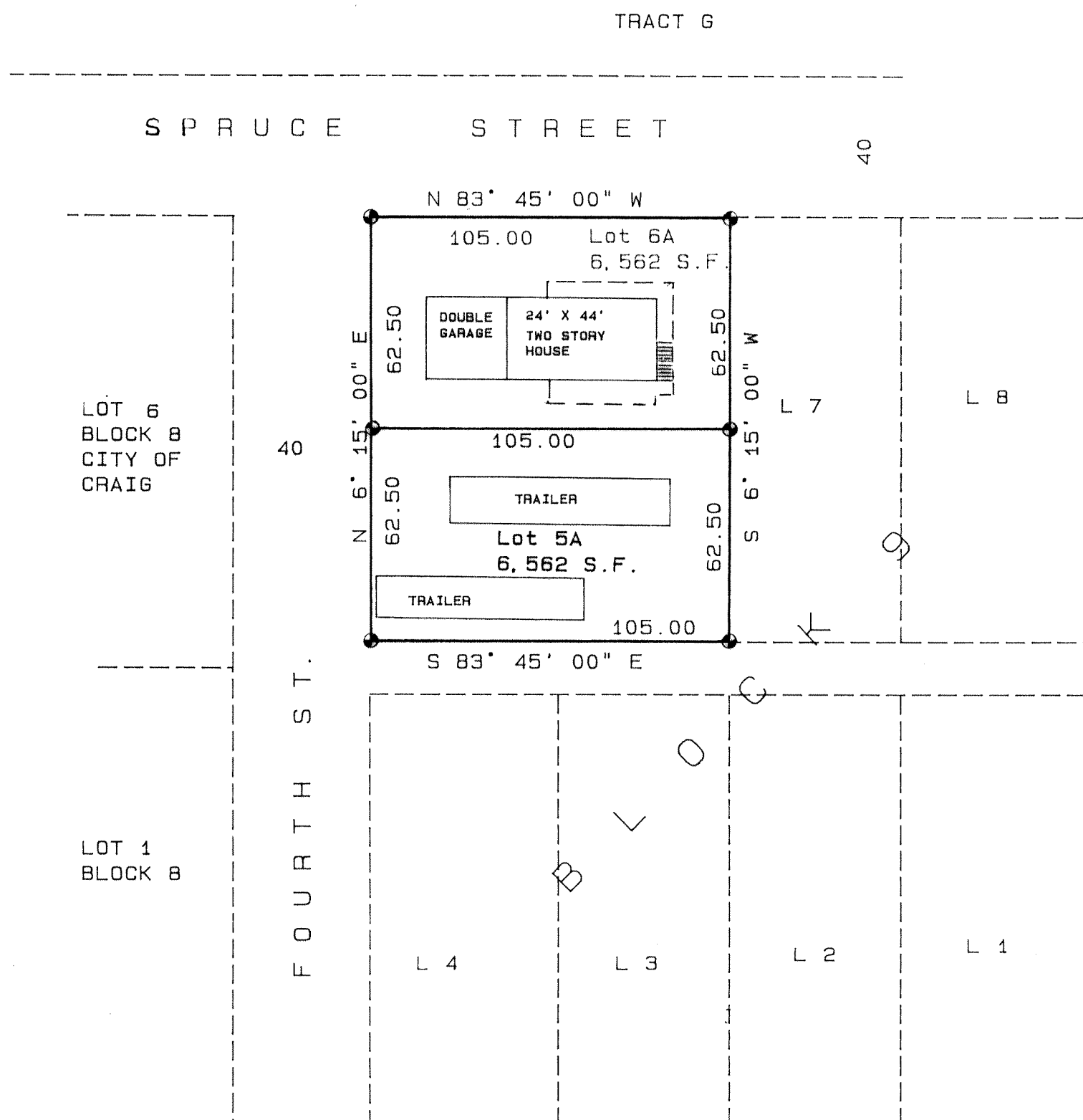
APPROVAL SIGNATURES

This final subdivision plat has been reviewed and approved in accordance with the Craig Land Development Code - Subdivision Ordinance. All dedications to the public have been inspected and accepted by the City of Craig.

Rockwell Pelland 12/14/88
City Platting Official Date

Dwight Michelson 12/14/88
Presiding Officer Date
-- Planning Commission

Raymond Rice 12/14/88
Planning Commission Member Date



VICINITY MAP

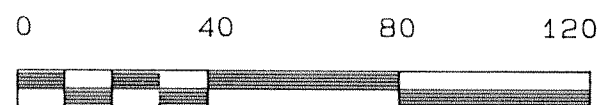
SURVEYOR'S CERTIFICATE:

I, Herman J. Kaiser, registered surveyor in and for the State of Alaska, hereby certify that this survey was made by me or under my direct supervision and that corner monuments as shown were located or set and that all dimensions shown are true and correct.

Herman J. Kaiser
Herman J. Kaiser, Registered Land Surveyor
Registration Number 3690-S, Alaska



SCALE 1" = 40'



NOTES:

- This subdivision has been approved by the Alaska Department of Environmental Conservation for wastewater discharges to the City of Craig, Alaska collector sewer system only. Other means of wastewater disposal are prohibited.
- Property corners shown as set during this survey are set at that point computed from Kaiser Survey Technology control surveys of Craig, Alaska. Therefrom, the Northwestern most corner of lot 6A, Block 9, U.S. Survey No. 1430 lies N 82° 47' 57" W (BASIS OF BEARING) a distance of 1298.41 feet from U.S.L.M. No. 1429.

LEGEND:

- PROPERTY CORNER MONUMENT SET. 2" ALUM. CAP ON # 5 REBAR.

88-44
RECORDED - FILED 20
Ketchikan REC. DIST.
DATE Dec 16 1988
TIME 3:34 P.M.
Requested by City of Craig
Address P.O. Box 23
Craig, AK 99921

| | | |
|--|-------------|-------------------------|
| A RESUBDIVISION OF LOTS 5 & 6, BLOCK 9 CRAIG TOWNSITE, AK. | | |
| U.S. SURVEY 1430 - K.R.D., KETCHIKAN, AK | | |
| Prepared for: RAY C. and HELEN VOTH CRAIG, ALASKA | | |
| K A I S E R S U R V E Y | | |
| T E C H N O L O G Y professional surveyors and planners | | |
| P. O. Box 412 Klawock, Alaska 99925 | | phone (907) 755-2987 |
| Date: 28 NOV 1988 | Draw Chk | Job # 88-54 |
| | FB # S88-57 | KRD No. |

KETCHIKAN 88-44