

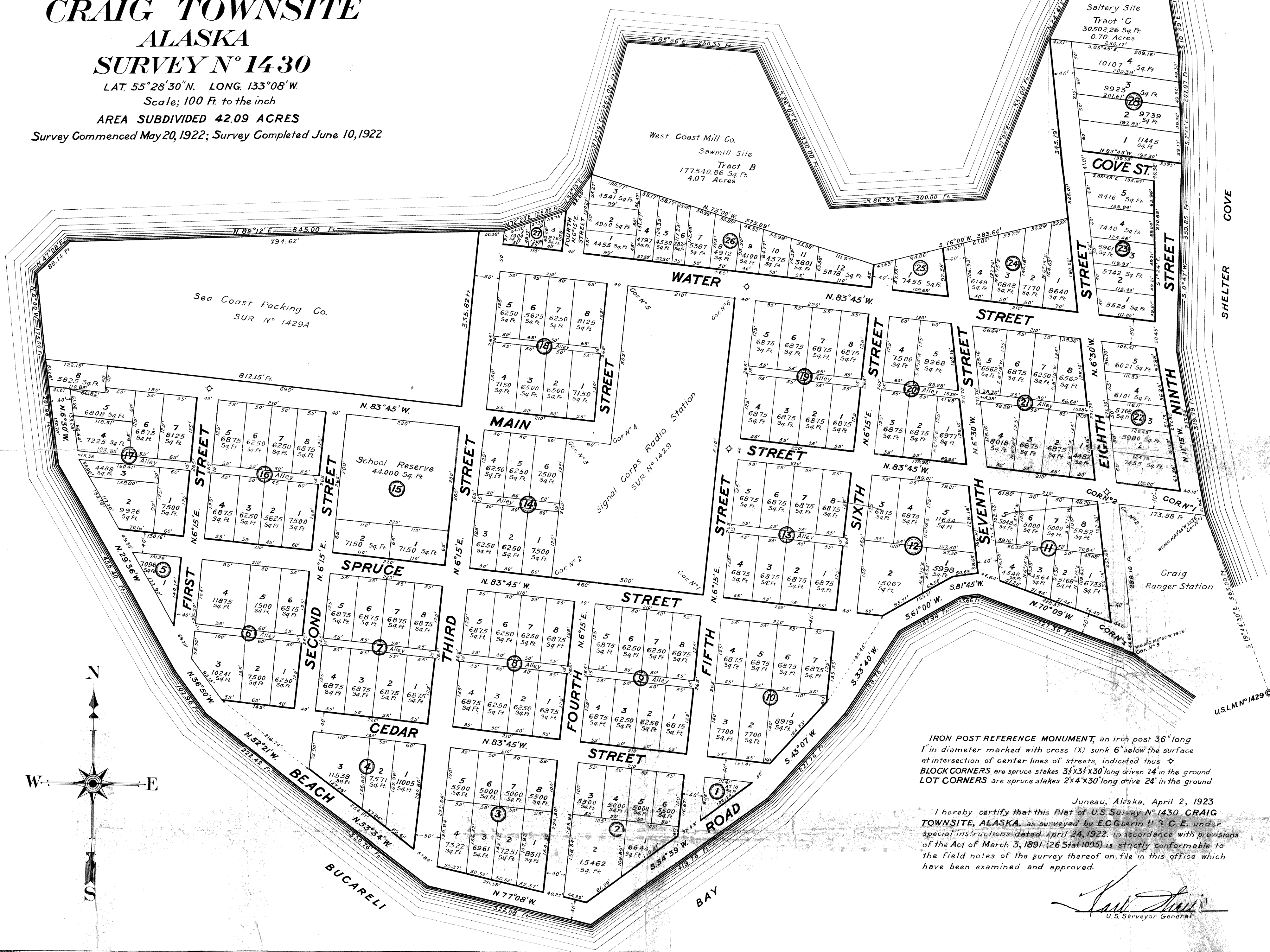
MAP  
OF  
**CRAIG TOWNSITE**  
ALASKA  
**SURVEY N° 1430**

LAT. 55°28'30"N. LONG. 133°08'W  
Scale; 100 Ft. to the inch

AREA SUBDIVIDED 42.09 ACRES

Survey Commenced May 20, 1922; Survey Completed June 10, 1922

KLAWAK INLET



IRON POST REFERENCE MONUMENT, an iron post 36" long 1" in diameter marked with cross (X) sunk 6" below the surface at intersection of center lines of streets, indicated thus  $\diamond$   
BLOCK CORNERS are spruce stakes 3 1/2"x3 1/2"x30" long driven 24" in the ground  
LOT CORNERS are spruce stakes 2"x4"x30" long driven 24" in the ground

Juneau, Alaska, April 2, 1923  
I hereby certify that this Plat of U.S. Survey N° 1430 CRAIG TOWNSITE, ALASKA, as surveyed by E.C. Guerin U.S. C.E. under special instructions dated April 24, 1922, in accordance with provisions of the Act of March 3, 1891 (26 Stat 1095) is strictly conformable to the field notes of the survey thereof on file in this office which have been examined and approved.

*Carl Guerin*  
U.S. Surveyor General

Craig Townsite USS1430

EL No. 37  
This certifies that the within instrument was  
filed for record in the office of the  
KETCHIKAN RECORDING DISTRICT  
No. 8 and recorded on the 4<sup>th</sup> day  
of April 1951 at 3:00  
o'clock P. M. in Vol. 1  
of P. Plate of page  
of the record of said office at Ketchikan  
Alaska  
P. J. Gilmore

#37