

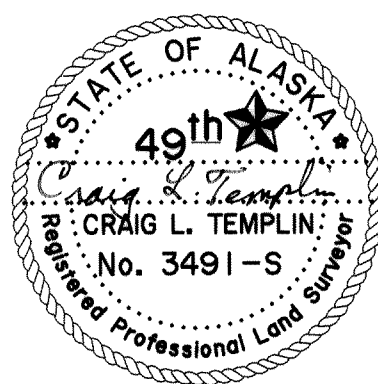
SURVEYOR'S CERTIFICATE

I hereby certify that I am properly registered and licensed to practice land surveying in the State of Alaska, that this plat represents a survey made by me or under my direct supervision, that the monuments shown hereon actually exist as described and that all dimensions and other details are correct.

Craig L. Templin
CRAIG L. TEMPLIN, AK RLS No. 3491

6-14-01

Date

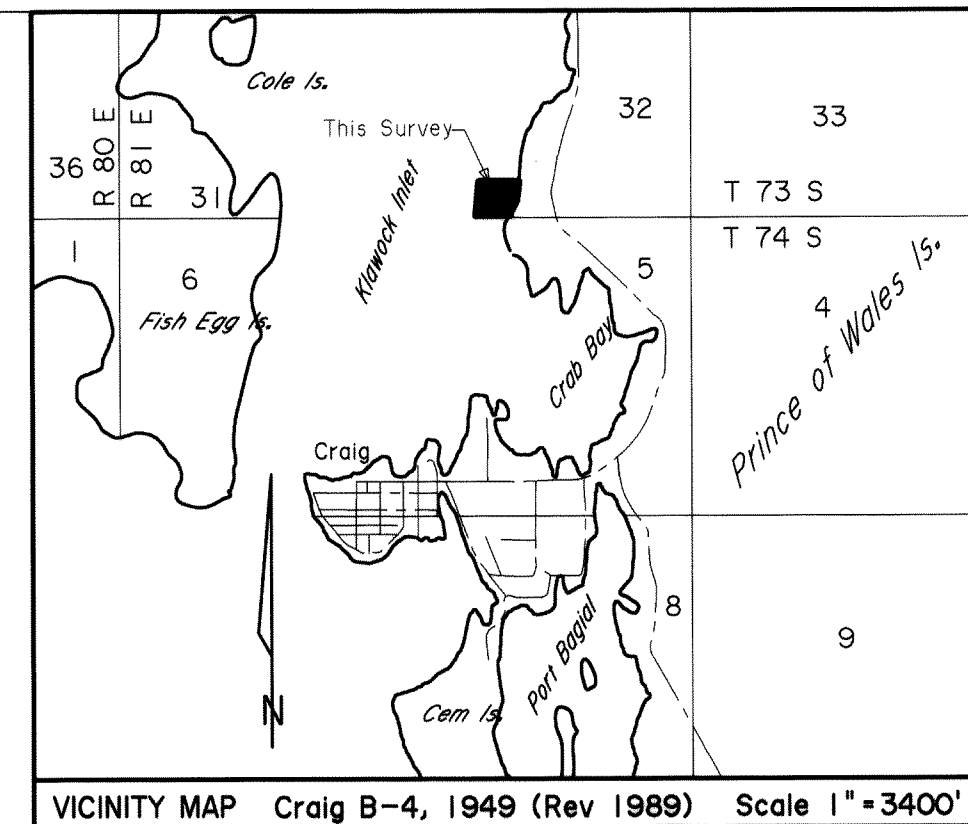


CURVE TABLE

CURVE	RADIUS	LENGTH	DELTA	CHORD	CH.BEARING
C-1	86.00'	17.14'	11°25'11"	17.11'	N79°42'35"W
C-2	136.00'	42.44'	17°52'50"	42.27'	N82°56'25"W

NOTES:

- There is a 50' Public Access Easement seaward of Mean High Tide.
- Meanders shown are originally taken from ATS 1410.
- The subsurface of most of Lot 1 and all of Lot 2 is owned by Sealaska Corporation, and that a subsurface easement for the properties is recorded at Book 260, Pages 282-285, Ketchikan Recording District.



VICINITY MAP Craig B-4, 1949 (Rev 1989) Scale 1" = 3400'

CERTIFICATE OF OWNERSHIP AND DEDICATION

We hereby certify that we are the owners of Lots 1-4, False Island Subdivision, that we do approve of this survey and plat and that we do for ourselves, our heirs, and assigns dedicate, donate, and convey to the public all right-of-way / alleys / public utility areas / easements / other public ways as shown hereon.

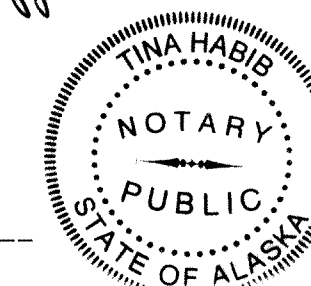
Thomas Briggs
Owner 7-12-01 Date

NOTARY'S ACKNOWLEDGEMENT

Subscribed and sworn before me this 12 day of July 2001.

Personally appeared Thomas Briggs and

Tina Habib
Notary Public for the State of Alaska

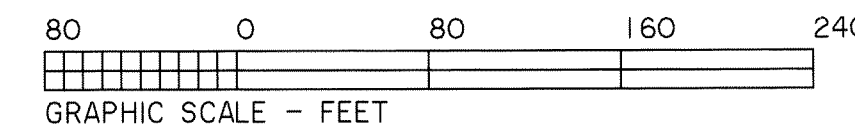


TAX STATEMENT

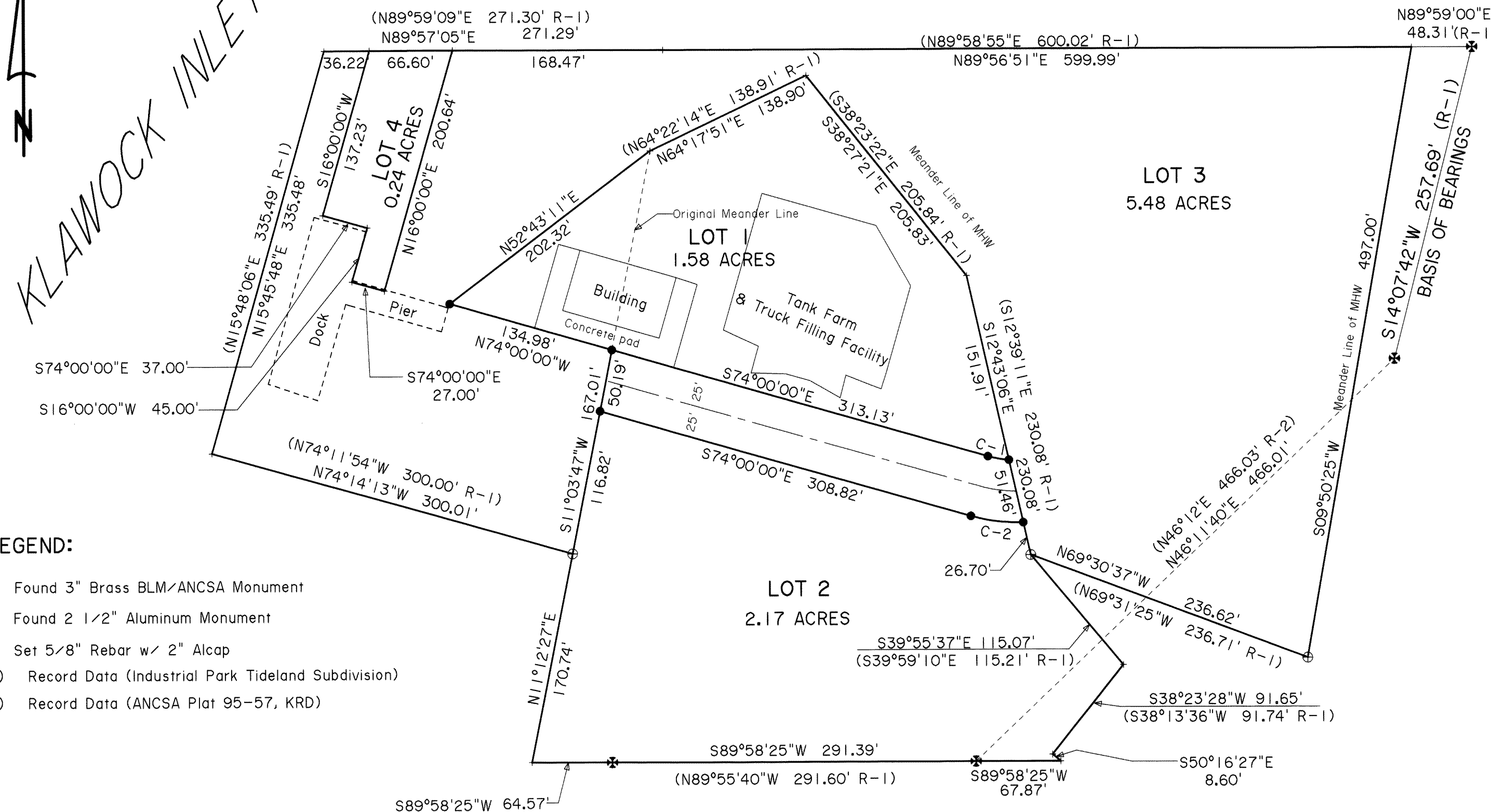
I hereby certify that all ad valorem taxes, special assessments, and other charges required by law to be placed on the tax rolls have been paid.

Vicki Hamilton
City Clerk 7-11-01 Date

BAR SCALE



KLAWOCK INLET



LEGEND:

- Found 3" Brass BLM/ANCSA Monument
- Found 2 1/2" Aluminum Monument
- Set 5/8" Rebar w/ 2" Alcap
- (R-1) Record Data (Industrial Park Tideland Subdivision)
- (R-2) Record Data (ANCSA Plat 95-57, KR D)

CERTIFICATE OF IMPROVEMENTS

All improvements have been examined and approved by the city this 11th day of July, 2001.

Mike McFarlane
Reviewed and Approved: PUBLIC WORKS DIRECTOR 7-11-01 Date

Don Prince
Reviewed and approved: CITY OFFICIAL 7-11-01 Date

Don Prince
Reviewed and approved by: PLANNING COMMISSION 7-11-01 Date

APPROVAL BY CITY OF CRAIG PLANNING COMMISSION

This final subdivision plat has been reviewed and approved in accordance with the Craig Land Development Code - Subdivision Ordinance. All dedications to the public have been inspected and accepted by the City of Craig.

Don Prince
City Planning Official 7-10-01 Date

Karen Saffard
Presiding Officer - Planning Commission 7-10-01 Date

Don Prince
Planning Commission Member 7-10-01 Date

2001-15
RECORDED-FILED 2001
Ketchikan REC. DIST.
DATE July 18, 2001
TIME 3:47 P.M.
Requested by City of Craig
Address

PLAT OF:
LOTS 1-4
FALSE ISLAND SUBDIVISION
A subdivision of Tract A, Block 1, Plat 95-57, KR D and Tract 1-2, Industrial Park Tideland Subdivision.
Located Within:
Section 32, Twp 73 S, Rge 81 E, CRM, AK.
Containing 9.47 Acres

Surveyed For: CITY OF CRAIG PO BOX 725 CRAIG, AK. 99921	Surveyed By: TEMPLIN LAND SURVEYING PO BOX WWP - WHALE PASS KETCHIKAN, AK. 99950 (907) 846-5120
--	---

Scale: 1" = 80' Date: 6/13/01 Drawn By: BLT Ck'd By: CLT Scr'n File: TRAFICG File No.