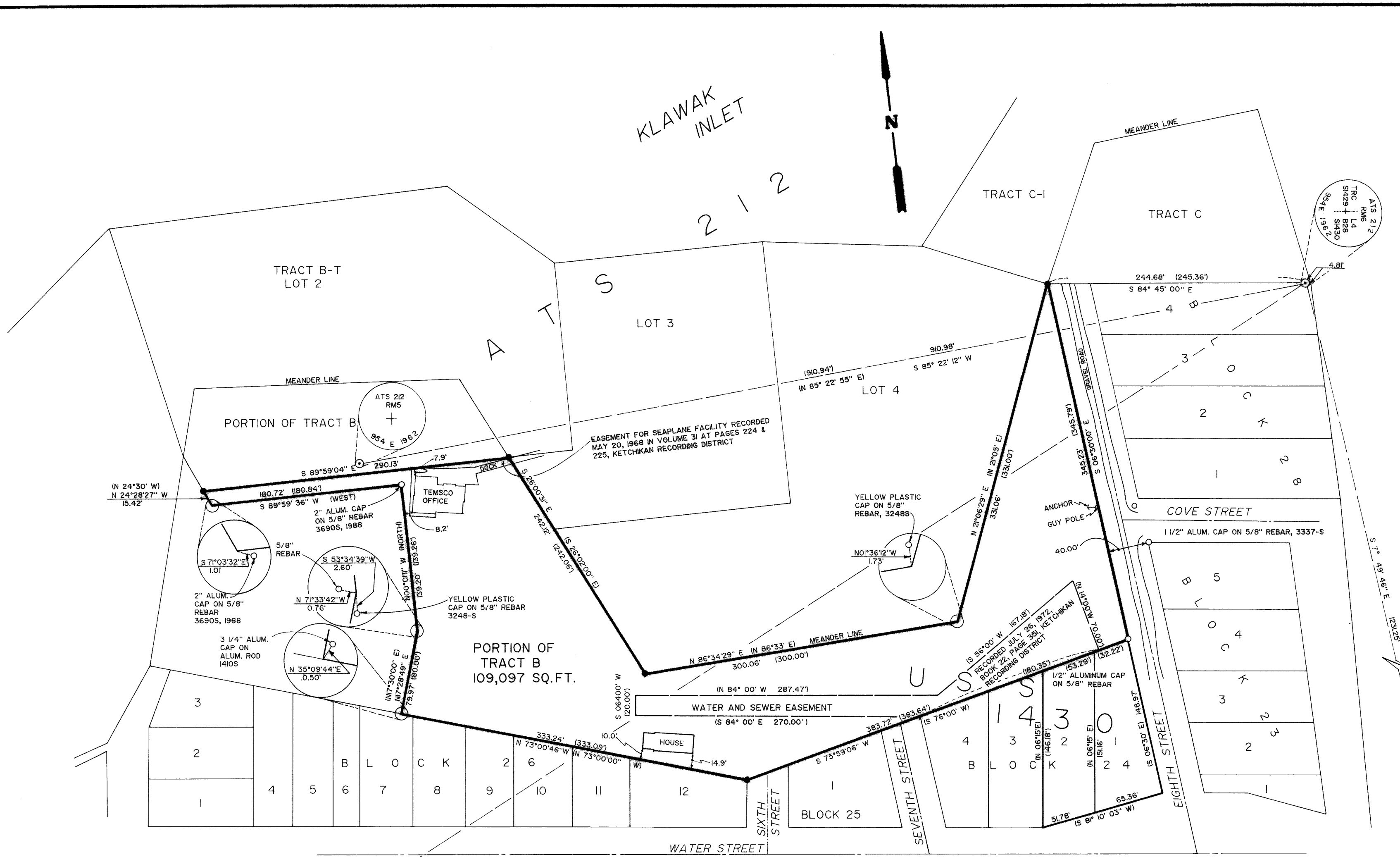


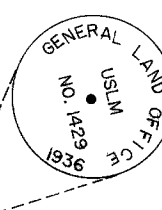
VICINITY MAP  
SCALE: 1" = 1 MILE  
FROM USGS QUAD MAP CRAIG B-4  
1949, REV. 1974



**SURVEYOR'S CERTIFICATE**

I HEREBY CERTIFY THAT I AM A REGISTERED LAND SURVEYOR, LICENSED IN THE STATE OF ALASKA, AND THAT IN MAY OF 1988, A SURVEY OF THE HEREIN DESCRIBED LANDS WAS CONDUCTED UNDER MY DIRECT SUPERVISION AND THAT THIS PLAT IS A TRUE AND ACCURATE REPRESENTATION OF THE FIELD NOTES OF SAID SURVEY, AND THAT ALL DIMENSIONS AND OTHER DETAILS ARE CORRECT ACCORDING TO SAID FIELD NOTES.

DATE 9/25/89  
SIGNATURE *William J. Clapp*



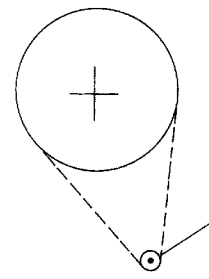
**NOTES**

- THIS SURVEY DOES NOT CONSTITUTE A SUBDIVISION AS DEFINED BY AS 15.190(2).
- EXISTING MONUMENTATION WAS LOCATED BY USE OF CLOSED TRAVERSES. A GRANT BOUNDARY ADJUSTMENT WAS USED BETWEEN PROPERTY CORNERS WITH EXISTING MONUMENTATION.
- THE BEARING BASE SHOWN WAS CALCULATED USING THE TOWNSHIP MAP OF CRAIG, ALASKA, U. S. SURVEY 1430, APPROVED APRIL 2, 1923 AND ALASKA TIDELANDS SURVEY NO. 212, RECORDED JULY 16, 1963, IN KETCHIKAN RECORDING DISTRICT PACKET 155.
- OTHER PLATS OR DOCUMENTS REFERRED TO ARE CRAIG TIDELANDS ADDITION PLAT RECORDED APRIL 22, 1969 IN KETCHIKAN RECORDING DISTRICT PACKET 59, KETCHIKAN RECORDING VOLUME 1, PAGES 543 AND 544, AND KETCHIKAN RECORDING DISTRICT BOOK 0164, PAGE 625, KETCHIKAN RECORDING DISTRICT, VOLUME 42, PAGE 170.

**LEGEND**

- ⊗ GLO OR BLM MONUMENT RECOVERED
- ⊙ ATS 212 MONUMENT RECOVERED
- SECONDARY MONUMENT RECOVERED
- 2" ALUMINUM CAP ON 5/8" REBAR SET
- ( ) INDICATES RECORD DATA

BASIS OF BEARING  
S 63°44'08" W  
1539.95'



BRASS CAP IN MONUMENT CASE AT NW COR. OF 3RD AND MAIN STREETS

89-34RS  
RECORDED - FILED 26  
KETCHIKAN REC. DIST.  
DATE 9-26-1989  
TIME 12:57 P.M.  
Requested by PEI  
Address 1225 TONGASS  
KETCHIKAN, AK 99901

KETCHIKAN RECORDING DISTRICT  
DO NOT SCALE THIS DRAWING. USE DIMENSIONS

**RECORD OF SURVEY**  
WITHIN THE SW 1/4 OF UNSURVEYED SECTION 5 AND THE SE 1/4 OF UNSURVEYED SECTION 6, TOWNSHIP 74 SOUTH, RANGE 81 EAST, ALASKA

WILLIAM CLAPP  
1300 NORTON BUILDING  
SEATTLE, WASHINGTON 98104

Consulting Engineers and Surveyors  
**PEI**  
Consultants, Inc.

1800 N. E. 8th, 7th Floor  
Bellevue, WA 98004  
(206) 455-9484

1225 Tongass Avenue  
Ketchikan, AK 99901  
(907) 225-6626

DATE MAY 26, 1989	NAME OF SURVEYOR PEI CONSULTANTS	JOB NO. Z016201
SCALE 1" = 50'	DRAWN BY CW	SHEET 1 OF 1

KETCHIKAN 89-34RS