

MONUMENT DATA:

Recovered 3.5" Brass Cap grouted in Boulder.

Recovered 3.25" Alum. Cap on 3/4" x 2 1/2" iron pipe driven in edge of parking lot. Cap recessed 1/2" below surface and grouted in pavement.

Recovered 3.25" Alum. Mon. on 2 1/2" x 30" alum. pipe set in concrete, 12" below gravel surface.

Recovered 3.25" Alum. Mon. on 2 1/2" x 30" alum. pipe in edge of road. Cap recessed 2" below surface.

Recovered 3.25" Alum. Mon. as per Plat 2009-18.

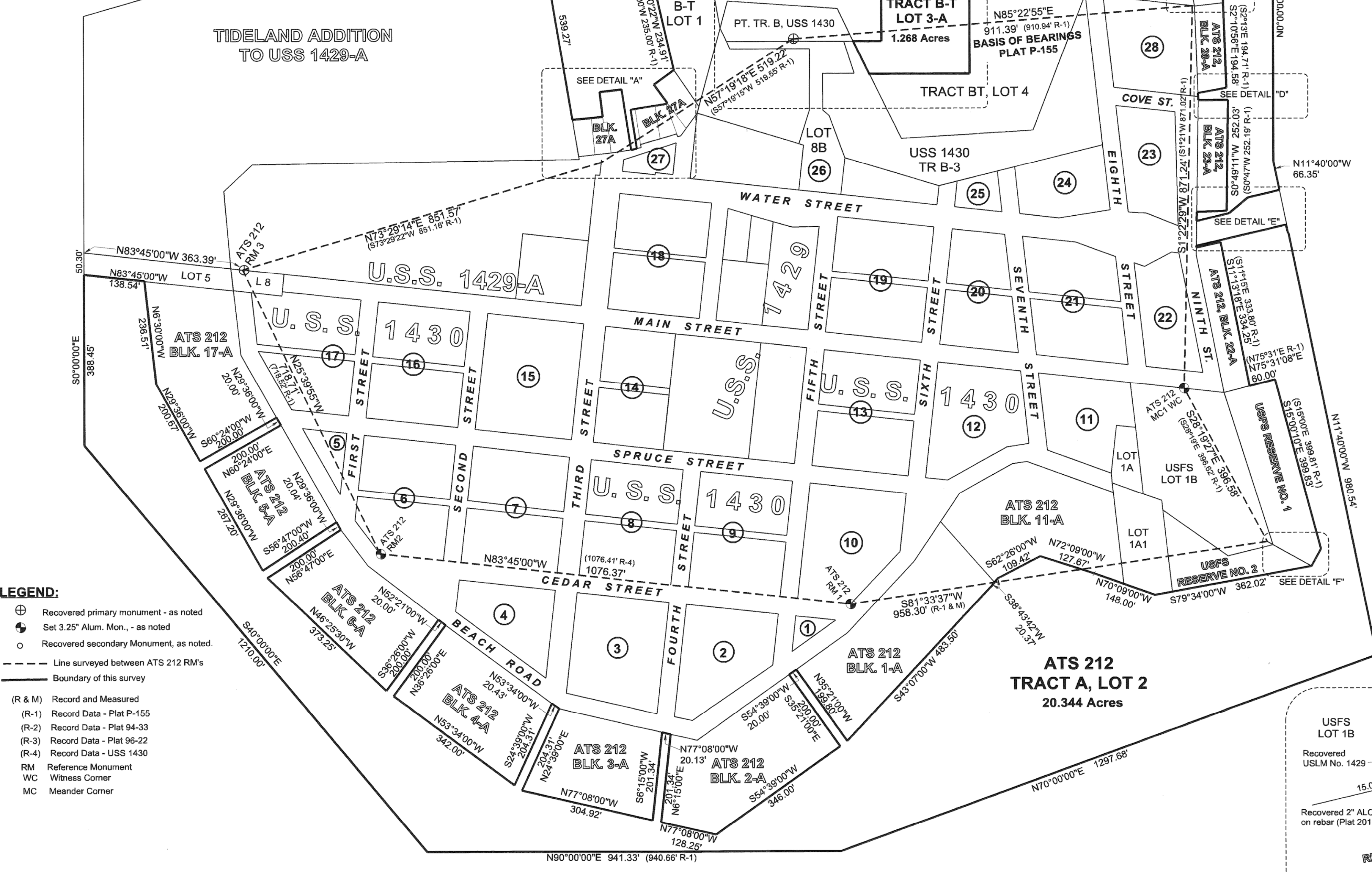
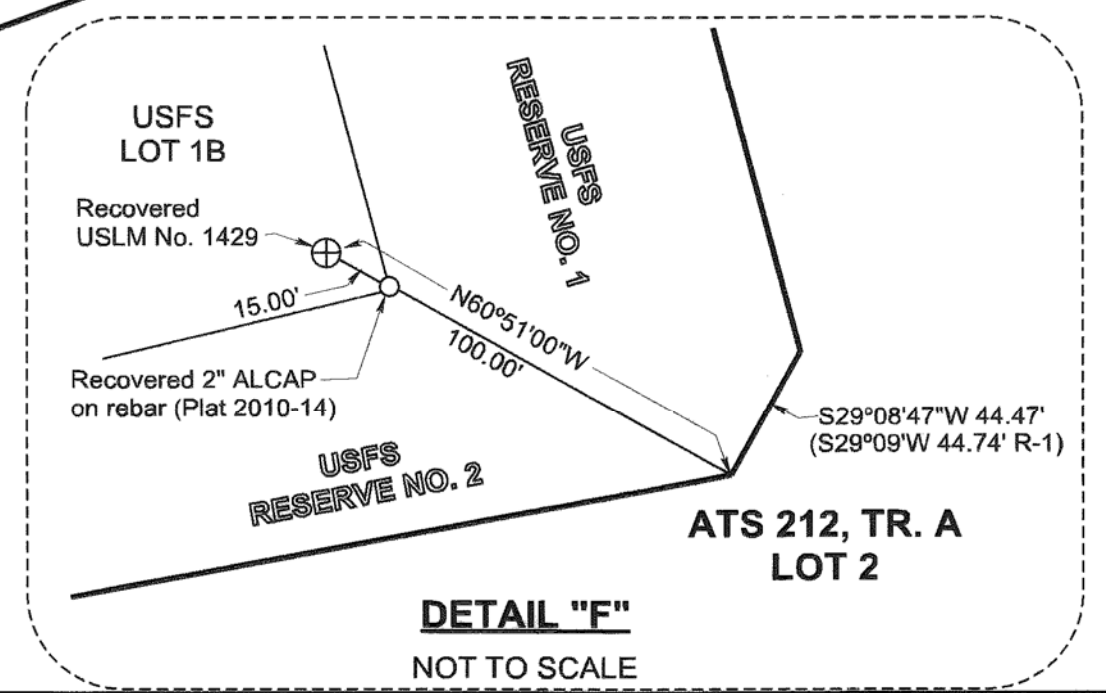
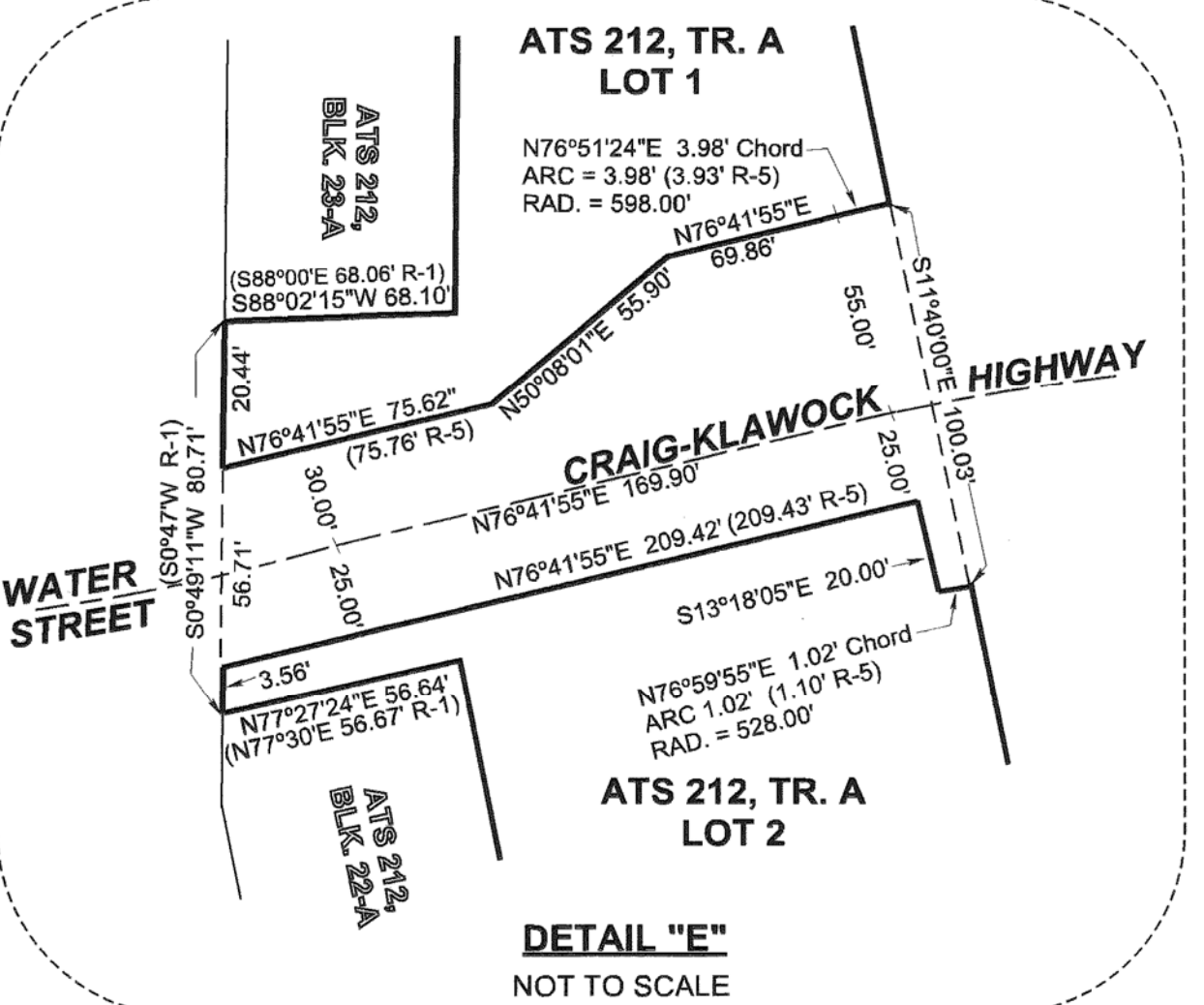
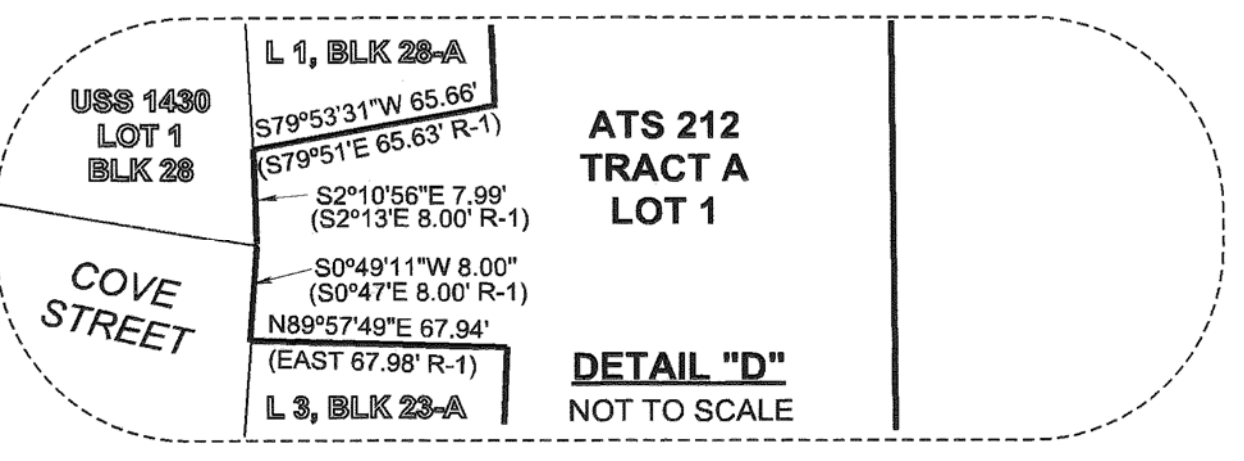
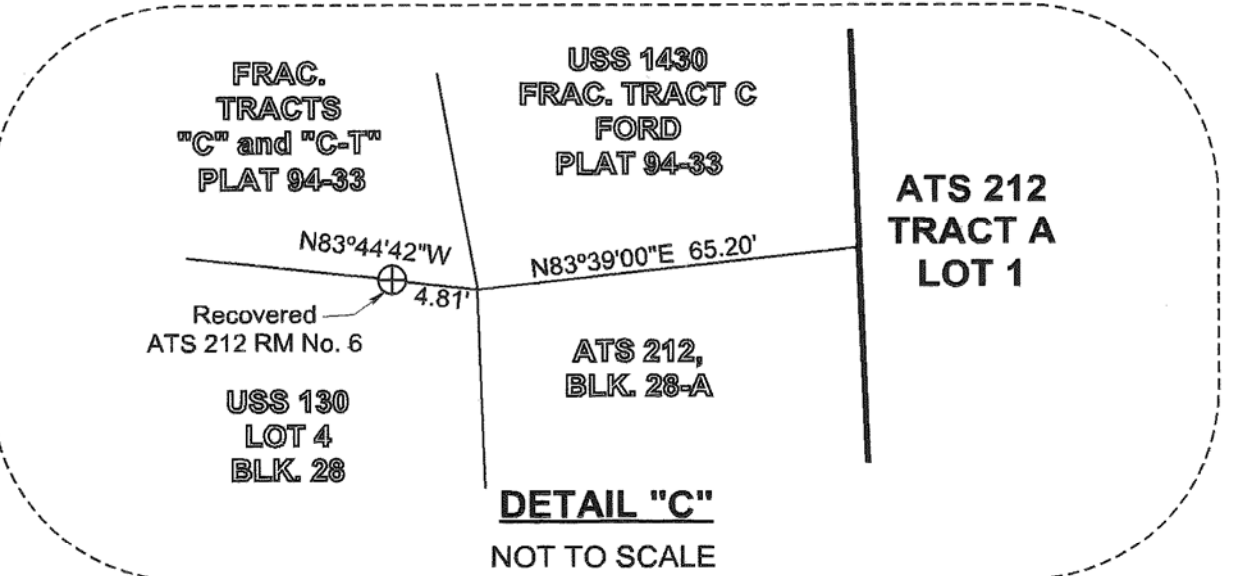
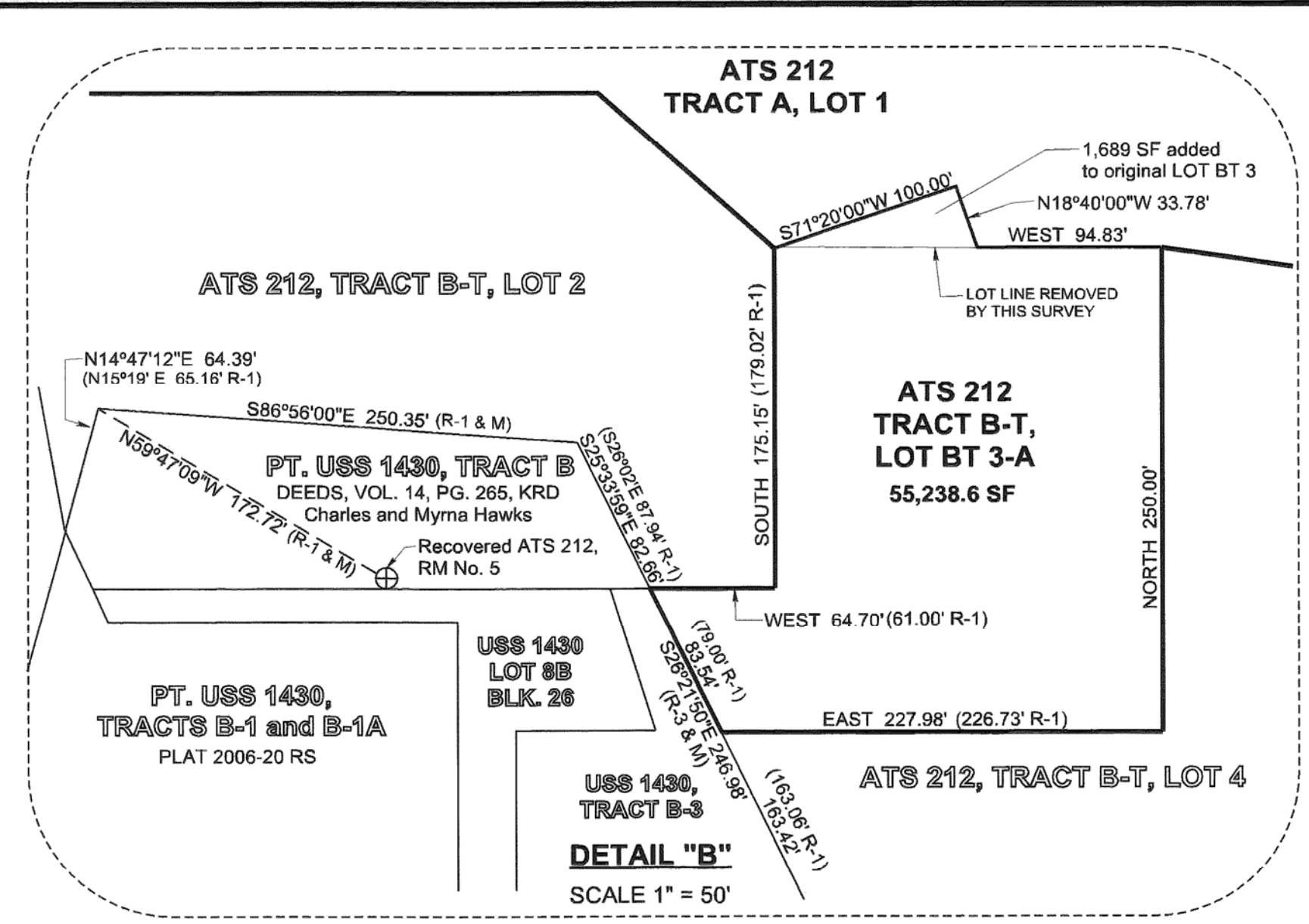
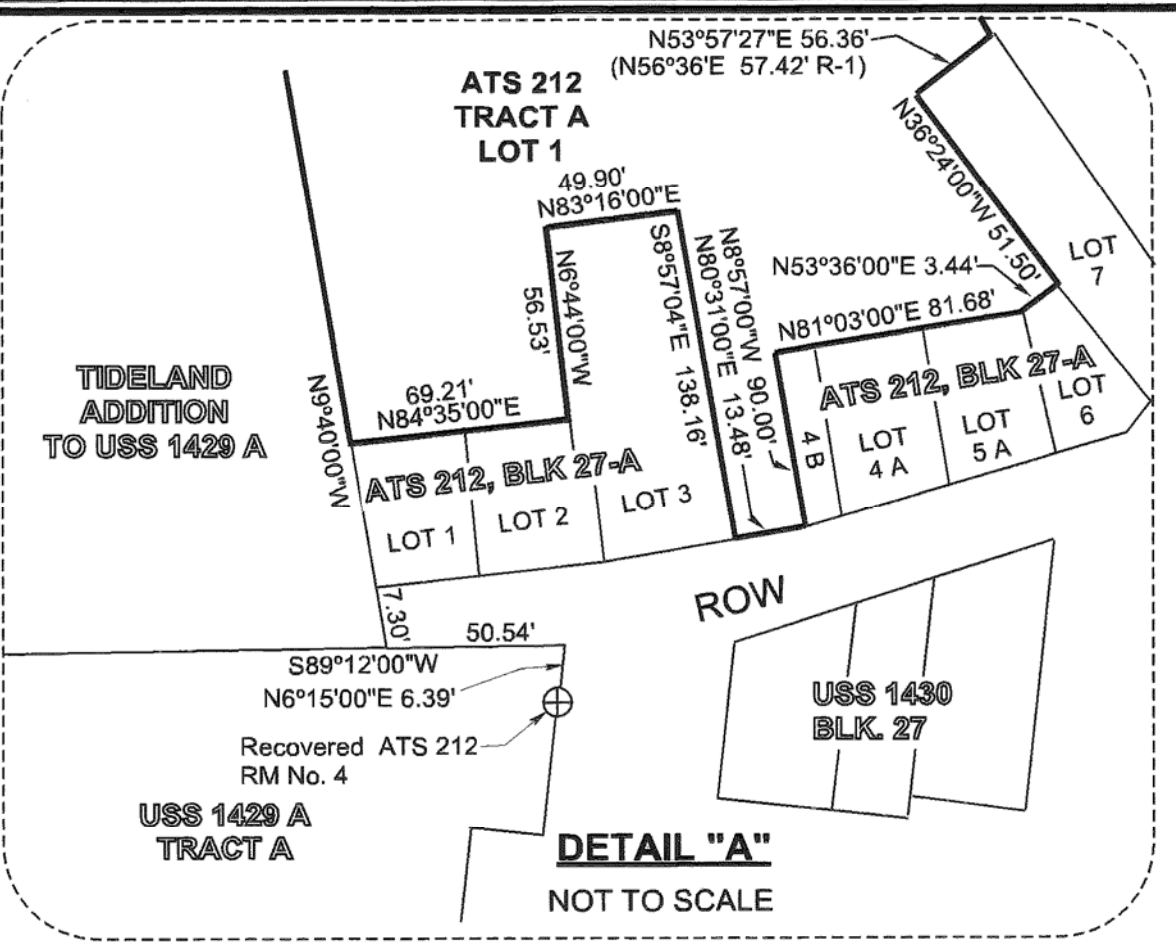
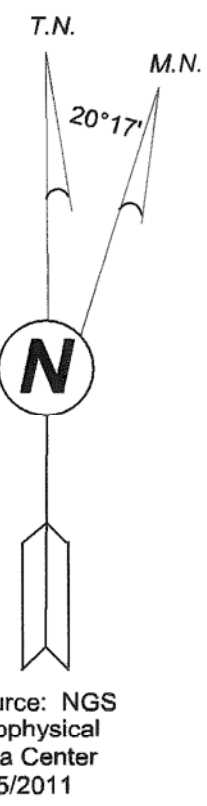
Recovered 3.25" Alum. Mon. 14" below surface in case with lid marked "water" in pavement.

Recovered 3.25" Alum. Mon. on 2.5" pipe, 4" above ground.

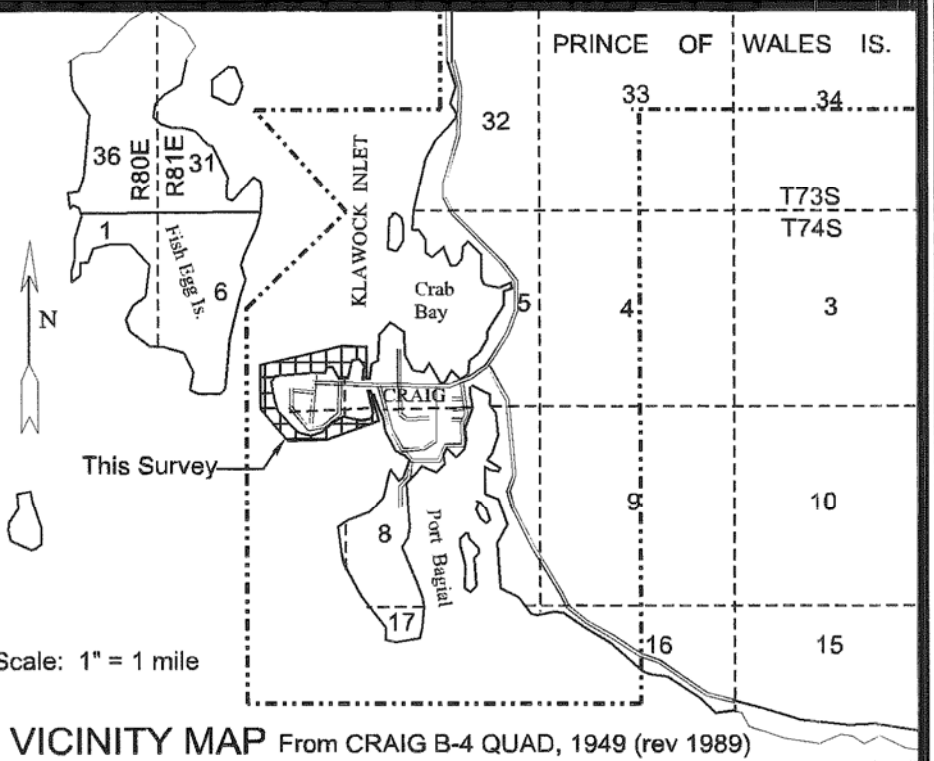
Recovered 3.25" Alum. Mon. on 2.5" pipe, 12" above ground.

REFERENCE PLATS:

- "Craig Tidelands Addition", the subdivision of ATS 212 surveyed in 1966 by Hans J. Furuseth and recorded as Plat No. P-155 on April 22, 1969.
- "Seaplane Subdivision" a subdivision of Tract C, USS 1430 and Tract C-T, ATS 212 by State of Alaska DOT/PF in 1994 and recorded as Plat No. 94-33 on Oct. 13, 1994.
- Replat of a portion of Tract B, USS 1430 and Lot 8A, Block 26, USS 1430 forming Tract B-3 and Lot 8B, Block 26 by R & M Engineering-Ketchikan, Inc. in April, 1996 and recorded as Plat No. 96-22 on May 21, 1996.
- "Record of Survey" of a portion of Tract B, USS 1430 surveyed by PEI Consultants, Inc. in May, 1989 and recorded as Plat No. 89-34 RS on Sept. 26, 1989.
- "Craig Townsite" USS 1430 surveyed by E. C. Guerin, USCE in 1922 and approved by the U.S. Survey General on April 2, 1923.
- "Craig Cannery Subdivision" surveyed by Craig L. Templin in 2008 and recorded as Plat No. 2009-18 on June 1, 2009.
- "Craig USFS Replat" surveyed by Craig L. Templin in 2009 and recorded as Plat No. 2010-14 on Mar. 19, 2010.



- LEGEND:**
- Recovered primary monument - as noted
 - Set 3.25" Alum. Mon., - as noted
 - Recovered secondary Monument, as noted
 - Line surveyed between ATS 212 RMs
 - Boundary of this survey
 - (R & M) Record and Measured
 - (R-1) Record Data - Plat P-155
 - (R-2) Record Data - Plat 94-33
 - (R-3) Record Data - Plat 96-22
 - (R-4) Record Data - USS 1430
 - RM Reference Monument
 - WC Witness Corner
 - MC Meander Corner



NOTES:

- The error of closure this survey does not exceed 1:5000.
- All bearings shown are true bearings as oriented to the Basis of Bearings and all distances shown are reduced to horizontal field distances.
- The purpose of this plat is to enlarge the original ATS 212, Tract B-T, Lot 3 and to redefine the "unsubdivided remainder" of ATS 212 (Plat P-155) to reflect the change caused by the change and to show the Craig-Klawock Highway right-of-way which further divides said "unsubdivided remainder".
- Record data, where it differs from measured data, is shown in parenthesis.

CERTIFICATE OF OWNERSHIP AND DEDICATION

We certify that we are the owners of the ATS 212 REPLAT, that we do approve of this survey and plat and that we do for ourselves, our heirs, and assigns dedicate, donate, and convey to the public all rights-of-way / alleys / public utilities / easements and other public areas as shown hereon.

John R. Wright
City of Craig, PO Box 725, Craig, AK 99921
Date: 5/16/11

Thomas R. Korman
Shawn-Seal, Inc. PO Box 650, Craig, AK 99921
Date: 5-24-11

NOTARY'S ACKNOWLEDGEMENT

Subscribed and sworn before me this 17th day of MAY, 2011 for: *John Bowling*

Vicki Hamilton
Notary Public for the State of Alaska
My Commission expires 10/29/13

NOTARY'S ACKNOWLEDGEMENT

Subscribed and sworn before me this 24th day of May, 2011 for: *Thomas Korman*

Kimberly Jay Richter
Notary Public for the State of Alaska
My Commission expires 11/22/14

CERTIFICATE OF IMPROVEMENT

No improvements are required for this vacation / replat.

Steve E. Jones
Public Works Director
Date: 5/11/11

Ben A. Tomp
City Planning Official
Date: 5/11/11

SURVEYOR'S CERTIFICATE

I hereby certify that I am properly registered and licensed to practice land surveying in the State of Alaska, that this plat represents a survey made by me or under my direct supervision, that the monuments shown hereon actually exist as described and that all dimensions and other details are correct.

Craig L. Templin, RLS 3491
Date: 5/14/2011

APPROVAL BY THE CITY OF CRAIG PLANNING COMMISSION

This plat has been reviewed and approved by the Craig Planning Commission in accordance with the Craig Land Development Code.

John H. Wright
President Officer - Planning Commission
Date: 5/26/11

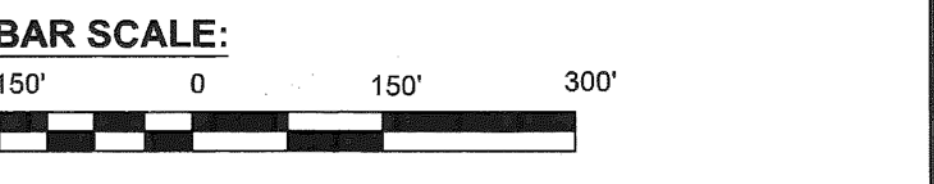
Shawn Seale
Planning Commission Member
Date: 5/26/11

Ben A. Tomp
City Planning Official
Date: 5/17/11

TAX STATEMENT

I certify that all ad valorem taxes, special assessments, and other charges required by law to be placed on the tax rolls have been paid.

Vicki Hamilton
City Clerk
Date: 5-17-11



ALASKA TIDELAND SURVEY 212 REPLAT

A REPLAT of ATS 212 TRACT B-T, LOT 3, and the undesignated remainder of ATS 212, as shown on PLAT NO. P-155

CREATING ATS 212, TRACT B-T, LOT 3 A and ATS 212, TRACT A, LOTS 1 and 2

Located within Sections 5, 6, 7 & 8, T 74 S., R 81 E., CRM, Alaska
KETCHIKAN RECORDING DISTRICT
Containing 36.436 Acres

Surveyed by: CITY OF CRAIG, PO Box 725, CRAIG, AK, 99921
Surveyed by: Templin Land Surveying, PO Box 1078, WARD COVE, AK 99928, Phone / Fax - 907-247-5120

Date of Survey: 11/20/2010
Scale: 1" = 150'
Drawing Date: 5/15/2011
Drawn by: C.L.T.

2011-21
Plat #
Ketchikan
Rec Dist
July 5, 2011
Date
Time 1:36 P.M.