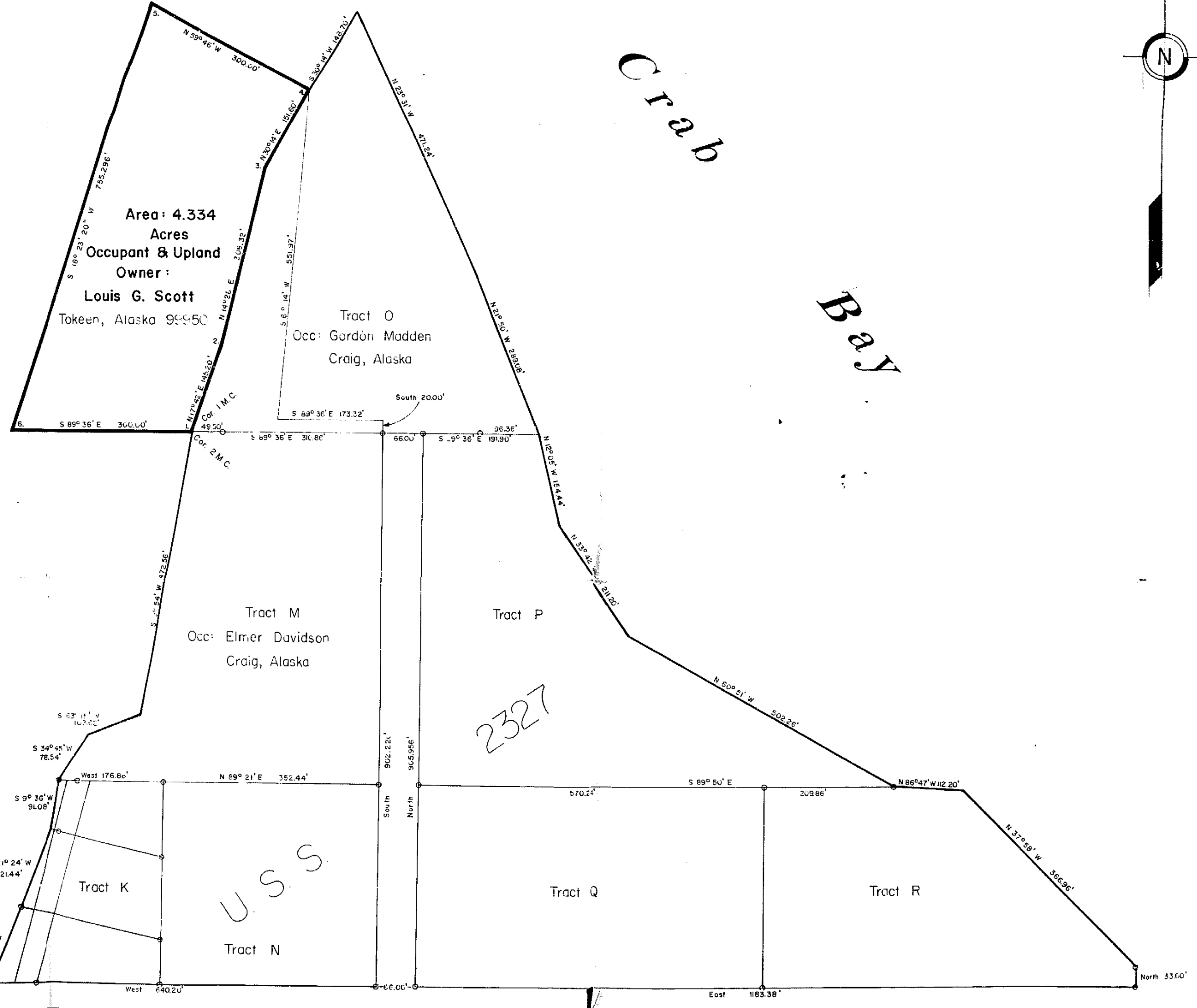
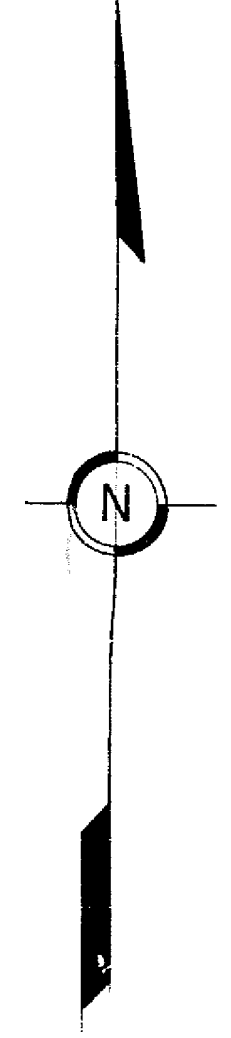


Scale 1"=1 Mile VICINITY MAP Craig (B-4)

KLAWAK INLET

Crab Bay



LEGAL DESCRIPTION

A tract of tideland being located on the southeast shore of Klawak Inlet in the First State Judicial District and within Sec. 5, Township 74 South, Range 21 East, Copper River Meridian, and being more specifically described as follows:

Beginning of Corner No. 1 MC of Tract O U.S. Survey No. 2327, (East Craig Group of Homesteads) common with Corner No. 2 MC of Tract M U.S. Survey No. 2327 and also Corner No. 1, the true point of beginning for this description; thence, along the natural meanders of the line of mean high water N 17° 42' E, 145.20 feet to a point which is Corner No. 2 for this description; thence, N 14° 25' E, 308.32 feet to a point which is Corner No. 3 for this description; thence, N 33° 14' E, 121.50 feet to a point which is Corner No. 4 for this description; thence, leaving the natural meanders of the line of mean high water, N 59° 48' W, 300.00 feet to a point which is Corner No. 5 for this description; thence, S 18° 23' 20" W, 715.296 feet to a point which is Corner No. 6 for this description; thence, S 89° 36' E, 308.00 feet to a point which is on the line of mean high water and is Corner No. 1 and the true point of beginning for this description.

Containing 4.334 acres, more or less.
 Latitude 55° 21' 50", Longitude 133° 21' 37" at Corner No. 1

This is a paper plat compiled by the Division of Lands from information supplied by the applicant.

The Division of Lands assumes no responsibility for the accuracy of this location.

No field survey has been executed on this tract to date.

MAP BASE: U.S. Survey No. 2327

DATE OF SURVEY	NAME OF SURVEYOR
Beginning	
Ending	
STATE OF ALASKA DEPARTMENT OF NATURAL RESOURCES DIVISION OF LANDS ANCHORAGE, ALASKA	
ALASKA TIDELAND SURVEY No. 696	
within protracted Sec. 5 T 74S, R 21E, CRM	
DRWN. BY J.V. 1-19-67	APPROVAL RECOMMENDED:
DATE APPROVED:	APPROVED:
SCALE: 1"=100'	CHECKED: FILE NO. 41-3

03 9 '67 PM
 VOL. 1 PLATS - PACKET #137

RECEIVED
 MAGISTRATE-RECORDER
 KETCHIKAN RECORDING
 DISTRICT
 67-2054