

PLAT
of
U.S. SURVEY NO. 2327
of the
EAST CRAIG GROUP OF HOMESITES

Executed under the Act of Congress,
Approved **MAY 26, 1934**
situated
ON SHELTER COVE AND KLAWAK INLET,
OPPOSITE CRAIG
TERRITORY OF ALASKA

Area: **47.92** acres
Declination: **31° 00' E.**
Scale: **2** chains to the inch
Latitude **55° 28' 30" N.** Longitude **133° 08' W.**

Survey executed by
CHARLES P. SEELYE, SURVEYOR, G.L.O.
JULY 23 TO AUGUST 8, 1936

CERTIFICATE OF APPROVAL
PUBLIC SURVEY OFFICE
Juneau, Alaska,
AUGUST 17, 1937
The original field notes of Survey No. 2327, of the
EAST CRAIG GROUP OF HOMESITES

from which this plat has been made, have been examined and approved, and are on file in this office, and I hereby certify that they furnish such an accurate description of said claim as will, if incorporated into a patent, serve fully to identify the premises, and that such reference is made therein to natural objects and permanent monuments, as will perpetuate and fix the Locus thereof.
And I further certify that this is a correct plat of said claim, made in conformity with said original field notes of the survey thereof, and the same is hereby approved.

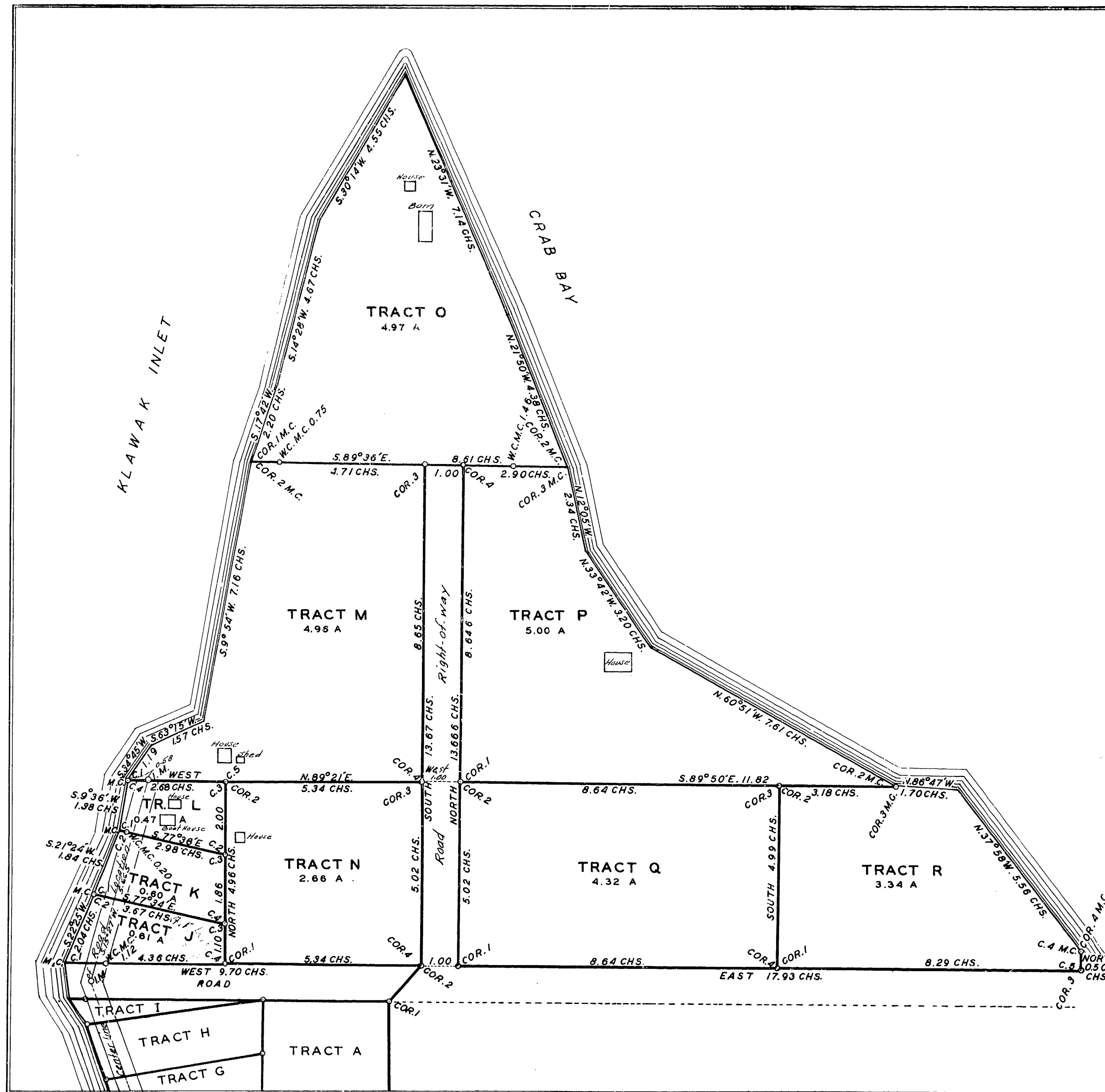
Geo. A. Parks
District Cadastral Engineer

UNITED STATES
DEPARTMENT OF THE INTERIOR
GENERAL LAND OFFICE
Washington, D.C., **JULY 12, 1938**

The survey represented by this plat having been correctly executed in accordance with the requirements of law and the regulations of this office, is hereby accepted.

Arthur W. Frank
Assistant Commissioner.

REC
ant/lyo
738



PLAT
of
U.S. SURVEY NO. 2327
of the
EAST CRAIG GROUP OF HOMESITES

Executed under the Act of Congress,
Approved MAY 26, 1934
situated
ON SHELTER COVE AND KLAWAK INLET, OPPOSITE
CRAIG,

TERRITORY OF ALASKA

Area: 47.92 acres
Declination: 31°00' E.
Scale: 2 chains to the inch
Latitude 55°28'30" N. Longitude 133°08' W.

Survey executed by
CHARLES P. SEELYE, SURVEYOR, G.L.O.

JULY 23 TO AUGUST 8, 1936

CERTIFICATE OF APPROVAL
PUBLIC SURVEY OFFICE

Juneau, Alaska,
AUGUST 17, 1937
The original field notes of Survey No. 2327, of the

EAST CRAIG GROUP OF HOMESITES

from which this plat has been made, have been examined and approved, and are on file in this office, and I hereby certify that they furnish such an accurate description of said claim as will, if incorporated into a patent, serve fully to identify the premises, and that such reference is made therein to natural objects and permanent monuments, as will perpetuate and fix the Locus thereof.

And I further certify that this is a correct plat of said claim, made in conformity with said original field notes of the survey thereof, and the same is hereby approved.

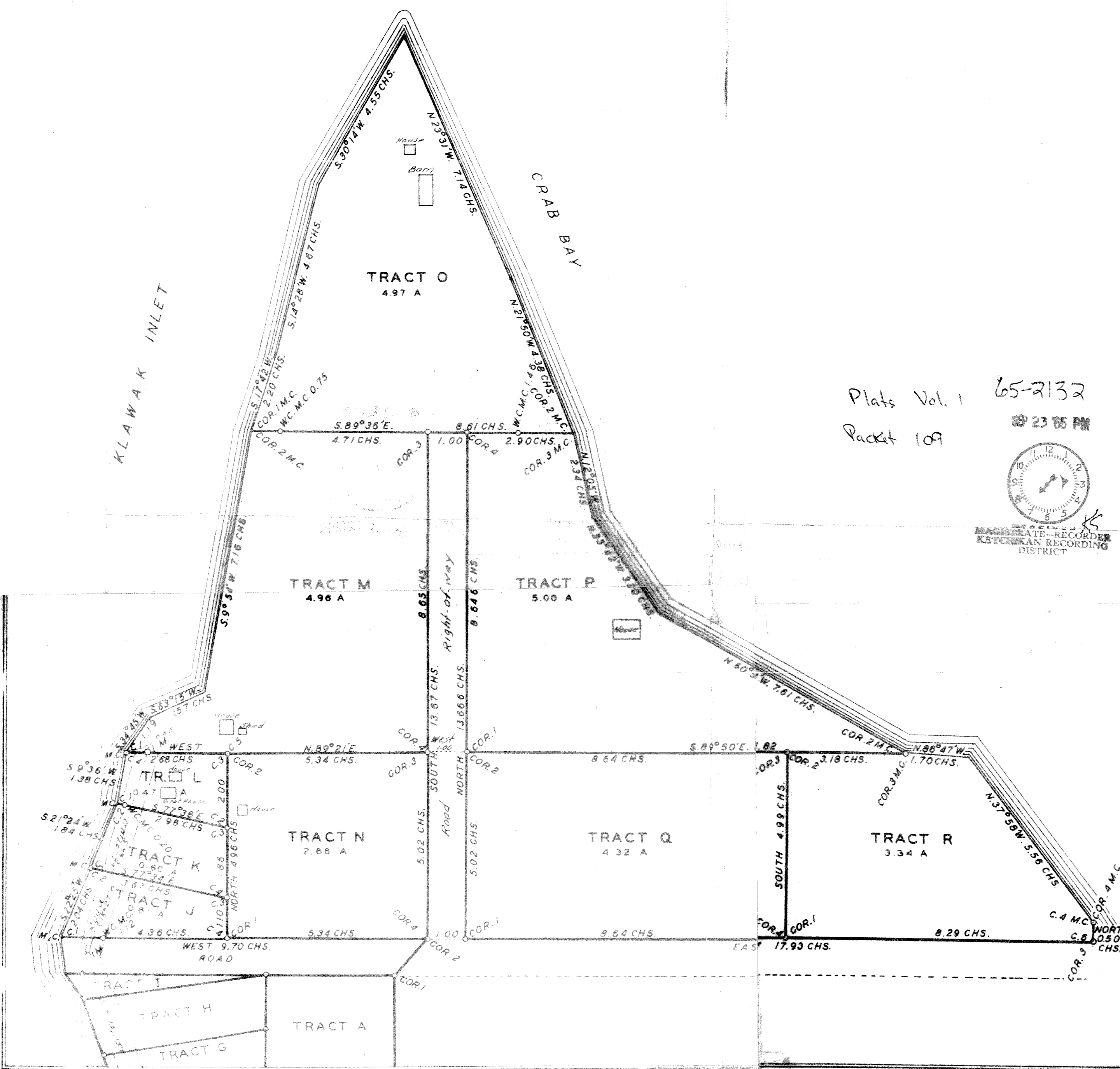
Geo. A. Parkes
District Cadastral Engineer

UNITED STATES
DEPARTMENT OF THE INTERIOR
GENERAL LAND OFFICE
Washington, D.C., JULY 12, 1938

The survey represented by this plat having been correctly executed in accordance with the requirements of law and the regulations of this office, is hereby accepted.

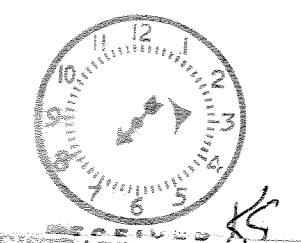
Auburnette F. ...
Assistant Commissioner.

REC.
rwg
738



Plats Vol. 1 65-2132
 Packet 109

SEP 23 1936 PM



PLAT
 of
 U.S. SURVEY NO. 2327
 of the
 EAST CRAIG GROUP OF HOMESITES

Executed under the Act of Congress,
 Approved MAY 26, 1934
 situated
 ON SHELTER COVE AND KLAWAK INLET, OPPOSITE
 CRAIG,

TERRITORY OF ALASKA

Area: 47.92 acres
 Declination: 31°00' E.
 Scale: 2 chains to the inch
 Latitude 55°28'30" N. Longitude 133°08' W.

Survey executed by
 CHARLES P. SEELYE, SURVEYOR, G.L.O.

JULY 23 TO AUGUST 8, 1936

CERTIFICATE OF APPROVAL
 PUBLIC SURVEY OFFICE
 Juneau, Alaska,
 AUGUST 17, 1937

The original field notes of Survey No. 2327, of the
 EAST CRAIG GROUP OF HOMESITES

from which this plat has been made, have been examined
 and approved, and are on file in this office, and I hereby
 certify that they furnish such an accurate description of
 said claim as will, if incorporated into a patent, serve fully
 to identify the premises, and that such reference is made
 therein to natural objects and permanent monuments, as
 will perpetuate and fix the Locus thereof.

And I further certify that this is a correct plat of
 said claim, made in conformity with said original field
 notes of the survey thereof, and the same is hereby ap-
 proved.

Geo. A. Parkes
 District Cadastral Engineer

UNITED STATES
 DEPARTMENT OF THE INTERIOR
 GENERAL LAND OFFICE
 Washington, D.C., JULY 12, 1936

The survey represented by this plat having been cor-
 rectly executed in accordance with the requirements of
 law and the regulations of this office, is hereby accepted.

Aulonette Frank
 Assistant Commissioner.

REC.
RWS

