

**OWNERSHIP AND DEDICATION**

WE HEREBY CERTIFY THAT WE ARE THE OWNERS OF TRACTS H & I USS 2327 THAT WE APPROVE OF THIS SURVEY AND PLAT; AND THAT WE DO FOR OURSELVES, OUR HEIRS, AND ASSIGNS DISPOSAL, DONATE, AND CONVEY TO THE PUBLIC ALL RIGHTS-OF-WAY/ALLEYS/PUBLIC UTILITY AREAS/EASEMENTS/ OTHER PUBLIC WAYS/AS SHOWN HEREON.

OWNER: CITY OF CRAIG

NOTARY FOR: S. Thomas Briggs  
City of Craig

SUBSCRIBED AND SWORN TO ME THIS 25 DAY OF November 1993

John Gray 3-23-95  
NOTARY FOR ALASKA MY COMMISSION EXPIRES

**TAX STATEMENT**

I HEREBY CERTIFY THAT ALL AD VALOREM TAXES, SPECIAL ASSESSMENTS, AND OTHER CHARGES REQUIRED BY LAW TO BE PLACED ON THE TAX ROLL HAVE BEEN PAID.

John Gray 11-3-93  
CITY CLERK DATE

**CERTIFICATE OF APPROVAL BY THE ALASKA DEPT ENVIRONMENTAL CONSERVATION**

THE ALASKA DEPT OF ENVIRONMENTAL CONSERVATION HAS REVIEWED PLANS FOR THIS SUBDIVISIONS WASTEWATER DISPOSAL, AND APPROVES THIS SUBDIVISION FOR PLATTING. ALL LOTS IN THIS SUBDIVISION ARE APPROVED FOR CONNECTION INTO THE CITY OF CRAIG WATER AND SEWER SYSTEMS ONLY. NO ON-SITE SEWER SYSTEMS WILL BE PERMITTED.

Deann Hogarty District Manager 9-2-93  
NAME & TITLE OF DATE  
ADEC APPROVING OFFICIAL

**CERTIFICATE OF IMPROVEMENTS**

A BOND/CASH DEPOSIT HAS BEEN EXECUTED/DEPOSITED IN AN AMOUNT DETERMINED BY THE CITY OF CRAIG TO PROVIDE FOR THE ULTIMATE INSTALLATION OF REQUIRED SUBDIVISION IMPROVEMENTS.

Mike McManis 10-6-93  
PUBLIC WORKS DIRECTOR DATE

John Gray 10-6-93  
CITY PLATTING OFFICIAL DATE

**APPROVAL SIGNATURES**

THIS FINAL SUBDIVISION PLAT HAS BEEN REVIEWED AND APPROVED IN ACCORDANCE WITH THE CRAIG LAND DEVELOPMENT CODE - SUBDIVISION ORDINANCE. ALL DEDICATIONS TO THE PUBLIC HAVE BEEN INSPECTED AND ACCEPTED BY THE CITY OF CRAIG.

John Gray 11-3-93  
CITY PLATTING OFFICIAL DATE

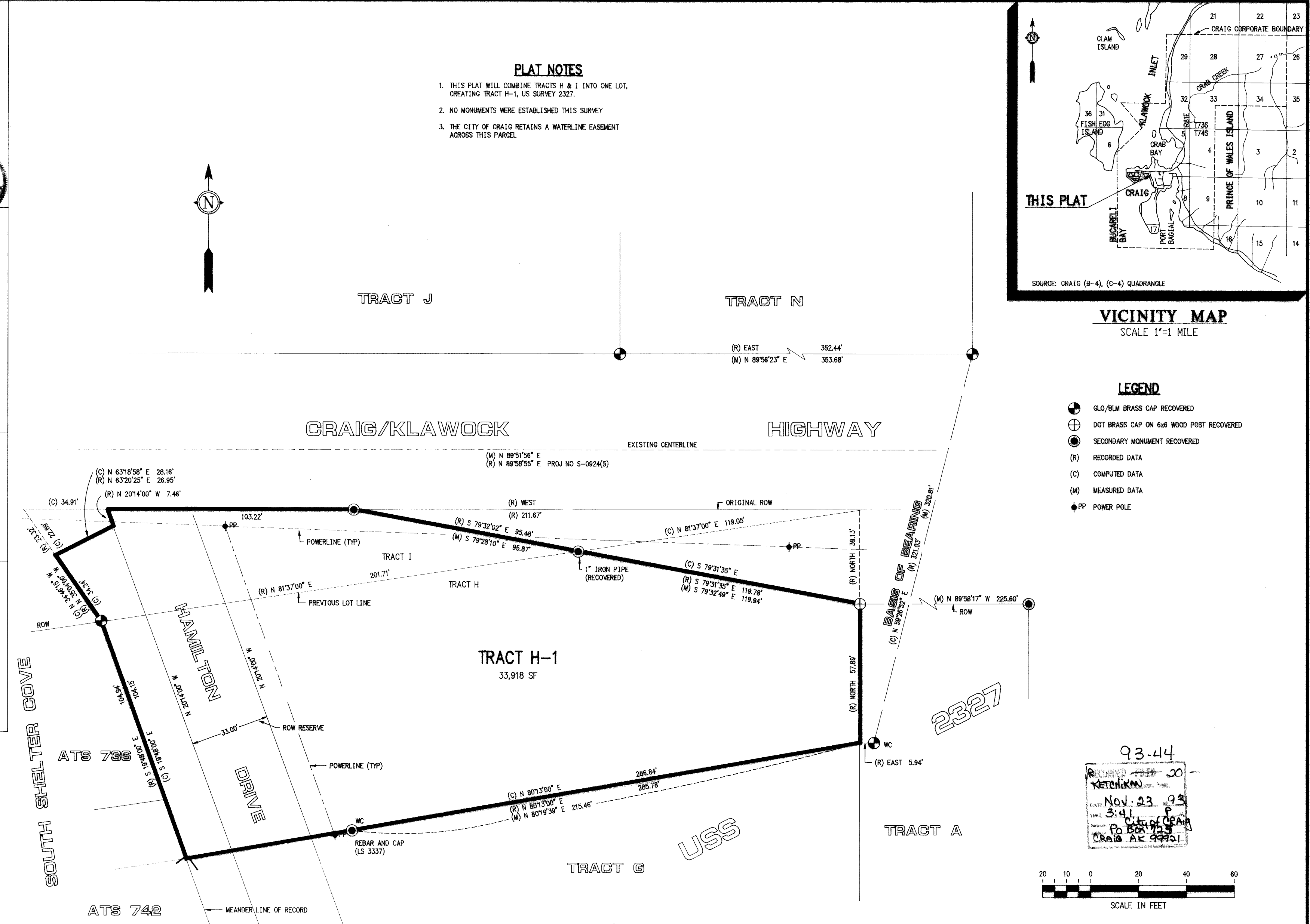
Deann Hogarty 11-3-93  
PRESIDENT OF BOARD - PLANNING COMMISSION DATE

Gate Price 11/3/93  
PLANNING COMMISSION MEMBER DATE

**GREG SCHEFF & ASSOCIATES**  
LAND SURVEYORS & ENGINEERS

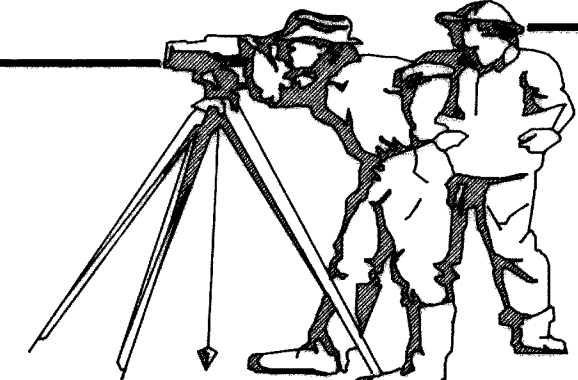
BOX 1849 SITKA, ALASKA 99835  
(907) 747-6700

BOX 1331 WRANGELL, ALASKA 99929  
(907) 874-2177



**PROJECT: REPLAT OF TRACTS H & I**  
USS 2327, CRAIG, ALASKA  
EAST CRAIG GROUP OF HOMESITES  
KETCHIKAN RECORDING DISTRICT

CLIENT: CITY OF CRAIG, BOX 23, CRAIG, ALASKA 99921



**SURVEYOR'S CERTIFICATE**

I HEREBY CERTIFY THAT I AM A REGISTERED SURVEYOR, LICENSED IN THE STATE OF ALASKA, AND THAT IN JULY, 1993 A SURVEY OF THE HEREIN DESCRIBED LANDS WAS CONDUCTED UNDER MY DIRECT SUPERVISION AND THAT THIS PLAT IS A TRUE AND ACCURATE REPRESENTATION OF THE FIELD NOTES OF SAID SURVEY, AND THAT ALL DIMENSIONS AND OTHER DETAILS ARE CORRECT ACCORDING TO SAID FIELD NOTES.

8/12/93  
DATE

Gregory G. Scheff  
GREGORY G SCHEFF LS 6700

DESIGNED: N/A

DRAWN: GGS/ACAD

CHECKED: GREGORY G SCHEFF

DATE OF SURVEY: 4/14/92

DATE OF PLAT: 7/12/93

SCALE: 1"=20'

SURVEYOR: GREGORY G SCHEFF

PROJECT NO. 51244-15-00

SHEET 1 OF 1

KETCHIKAN 93-44