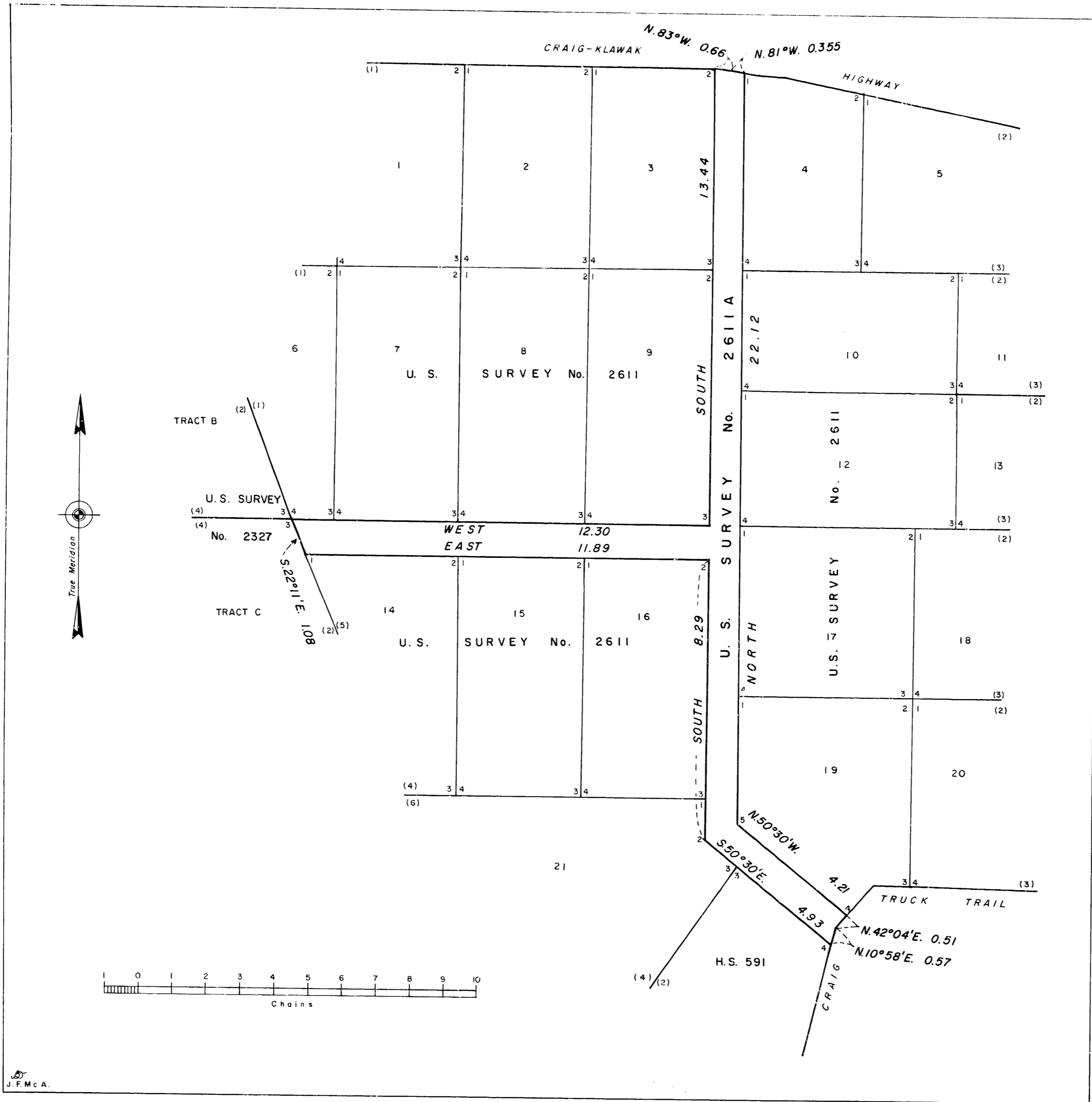


ORIGINAL



**U.S. SURVEY  
No. 2611A, ALASKA**

APPROXIMATE GEOGRAPHIC POSITION AT  
CORNER NO. 1 OF  
U.S. SURVEY NO. 2611  
LATITUDE 55°28'56" NORTH,  
LONGITUDE 133°07'50" WEST  
AREA: 3.93 ACRES

THIS PLAT IS BASED ENTIRELY UPON THE RECORDS OF  
U.S. SURVEY NO. 2611, ALASKA,  
ACCEPTED APRIL 19, 1946  
AND U.S. SURVEY NO. 2327, ALASKA,  
ACCEPTED JULY 12, 1938.

UNITED STATES DEPARTMENT OF THE INTERIOR  
BUREAU OF LAND MANAGEMENT  
Denver, Colorado May 28, 1980

This plat, based entirely upon the official records, and having been correctly prepared in accordance with the regulation of this Bureau, is hereby accepted.

For the Director

*Alan Arnold*  
Acting Chief, Cadastral Survey  
Examination and Approval Staff