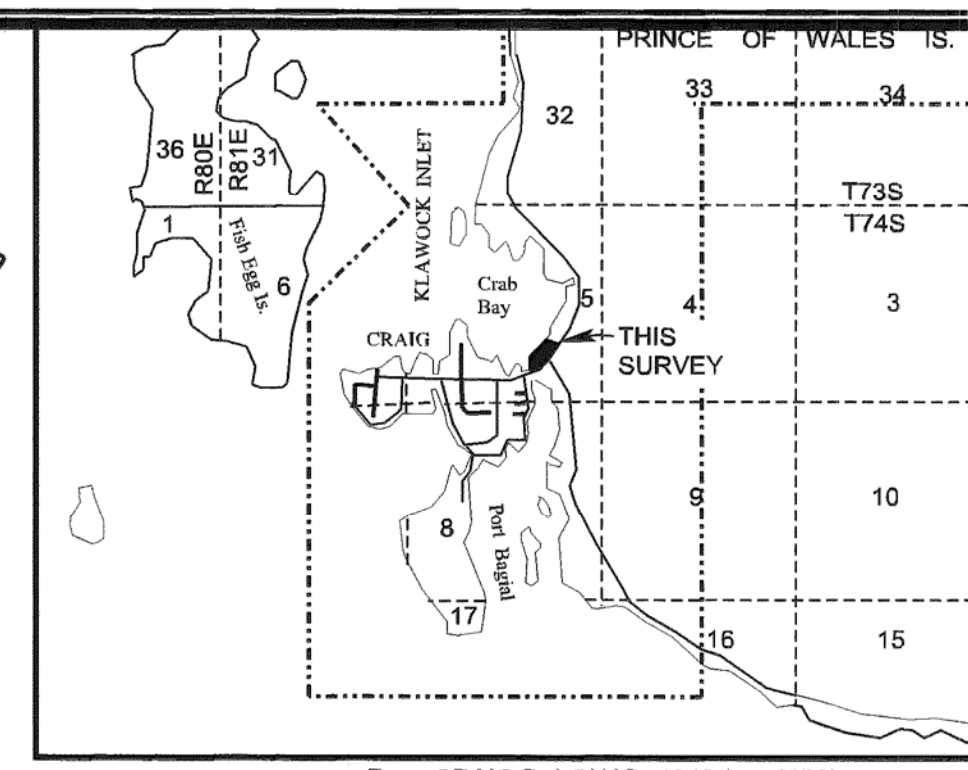
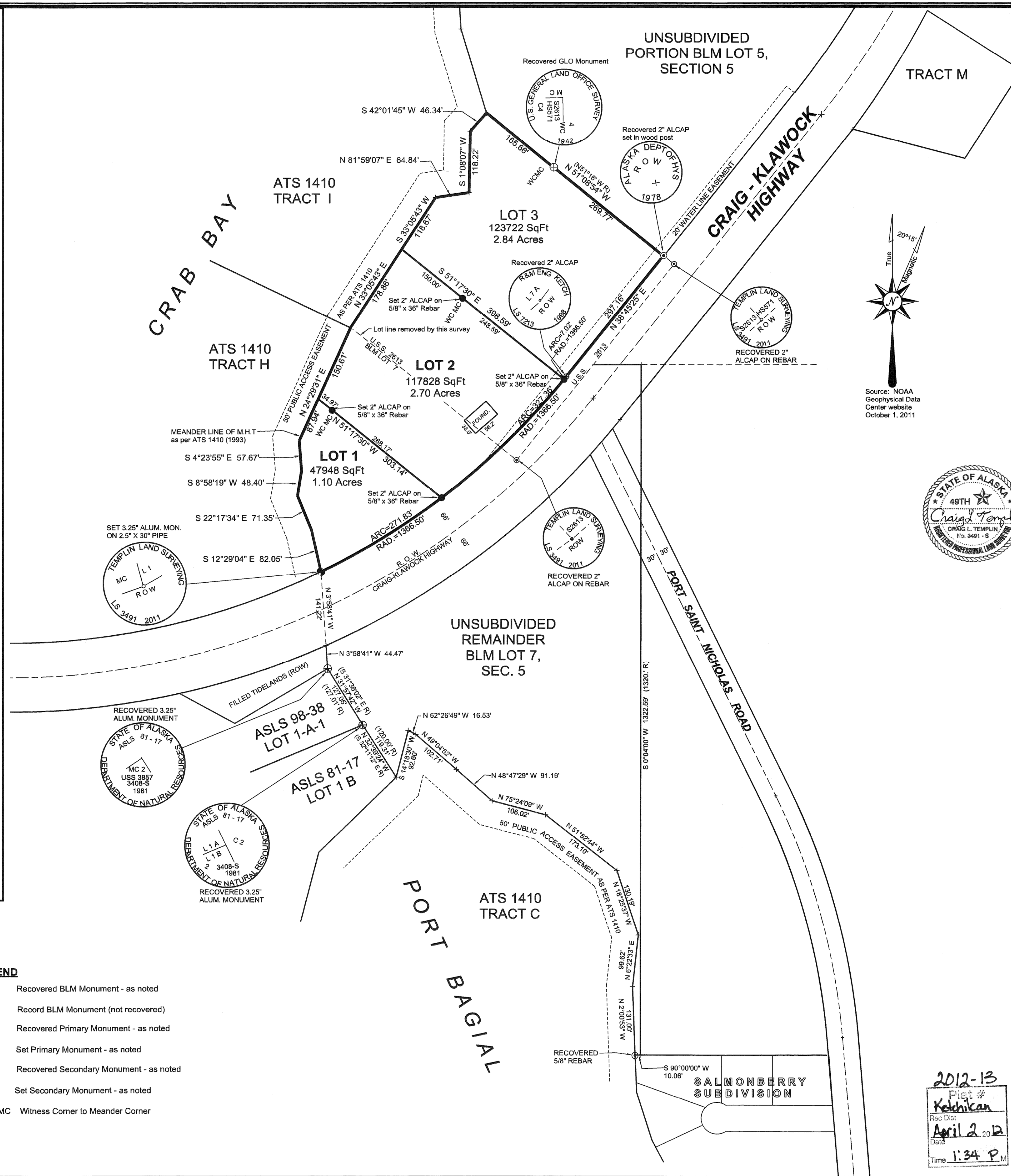


- NOTES:**
- The error of closure this survey does not exceed 1:5000.
 - All bearings shown are true bearings as oriented to the Basis of Bearings and all distances shown are reduced to horizontal field distances.
 - Record data, where it differs from measured data, is shown in parenthesis.
 - The purpose of this plat is to add a portion of Blm Lot 7 to USS 2613 and then divide the resulting parcel into three (3) Lots.
 - Sealaska Corporation has the subsurface rights to the property being subdivided. This plat constitutes a subdivision of the surface estate only. The subsurface estate owner has not participated in this platting action.
 - The original boundaries of USS 2613 as shown on the US Department of the Interior General Land Office plat approved May 14, 1898 and amended May 26, 1934 were modified to include the State Highway as shown on the State of Alaska Department of Highways Right of Way Map S-0924(5) which was approved September 8, 1971.

LEGEND

- ⊕ Recovered Blm Monument - as noted
- ⊗ Record Blm Monument (not recovered)
- ⊕ Recovered Primary Monument - as noted
- ⊕ Set Primary Monument - as noted
- ⊙ Recovered Secondary Monument - as noted
- Set Secondary Monument - as noted
- WC MC Witness Corner to Meander Corner



VICINITY MAP From CRAIG B-4 QUAD, 1949 (rev 1989) Scale: 1" = 1 mile

CERTIFICATE OF OWNERSHIP AND DEDICATION

We certify that we are the owners of CRAB COVE SHORES SUBDIVISION, that we do approve of this survey and plat and that we do for ourselves, our heirs, and assigns dedicate, donate, and convey to the public all rights-of-way / alleys / public utilities / easements and other public areas as shown hereon.

Shaan-Seet, Inc. PO Box 690, Craig, AK 99921 Date: 1-3-12

NOTARY'S ACKNOWLEDGEMENT

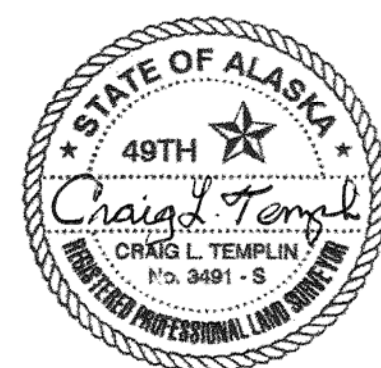
Subscribed and sworn before me this 3rd day of January, 2012 for Shaan-Seet, Inc.

Notary Public for the State of Alaska
My Commission expires 6-5-13
Notary Public
REBEKAH J. SCHAPER
State of Alaska
My Commission Expires Jun 3, 2013

SURVEYOR'S CERTIFICATE

I hereby certify that I am properly registered and licensed to practice land surveying in the State of Alaska, that this plat represents a survey made by me or under my direct supervision, that the monuments shown hereon actually exist as described and that all dimensions and other details are correct.

Craig L. Templin, RLS 3491
Date: 10/29/2011



CERTIFICATE OF IMPROVEMENTS

No improvements are required for this vacation / replat.

Public Works Director Date: 3/22/12
City Platting Official Date: 3/22/12

APPROVAL BY THE CITY OF CRAIG PLANNING COMMISSION

This plat has been reviewed and approved by the Craig Planning Commission in accordance with the Craig Land Development Code.

Presiding Officer - Planning Commission Date: 3/12/12
Planning Commission Member Date: 3/22/12
City Platting Official Date: 3/22/12

TAX STATEMENT

I certify that all ad valorem taxes, special assessments, and other charges required by law to be placed on the tax rolls have been paid.

City Clerk Date: 3-22-12



PLAT OF:
CRAB BAY SHORES SUBDIVISION
CREATING LOTS 1, 2, 3 and an UNSUBDIVIDED REMAINDER of Blm Lot 7 SECTION 5
A SUBDIVISION OF U.S.S. 2613 and Blm Lot 7 SECTION 5, T. 74 S., R 81 E.
Located within Sec. 5, T. 74 S., R 81 E., CRM, Alaska
KETCHIKAN RECORDING DISTRICT
Containing 6.64 Acres

Surveyed by:
SHAAN-SEET, INC.
PO BOX 690
CRAIG, AK 99921

Surveyed by:
Templin Land Surveying
PO Box 1078
WARD COVE, AK 99928
Phone / Fax - 907-247-5120

Date of Survey: 9/20/2011 Scale: 1"=100' Date of Drawing: 10/05/2011 CK'd by: File C.L.T.

2012-13
Ketchikan
April 2, 2012
Time: 1:34 P.M.