

URS ENGINEERS

Engineering and Environmental Consultants
Juneau Anchorage Seattle

CITY OF CRAIG CRAIG, ALASKA

400,000 GALLON WOOD STAVE WATER TANK

CITY COUNCIL

MARY LEE PERKINS
LEE JENSEN
BEVERLY SHORT
BARBARA FIELDS
DOUG RHODES
RALPH MACKIE

MAYOR

LEE AXMAKER

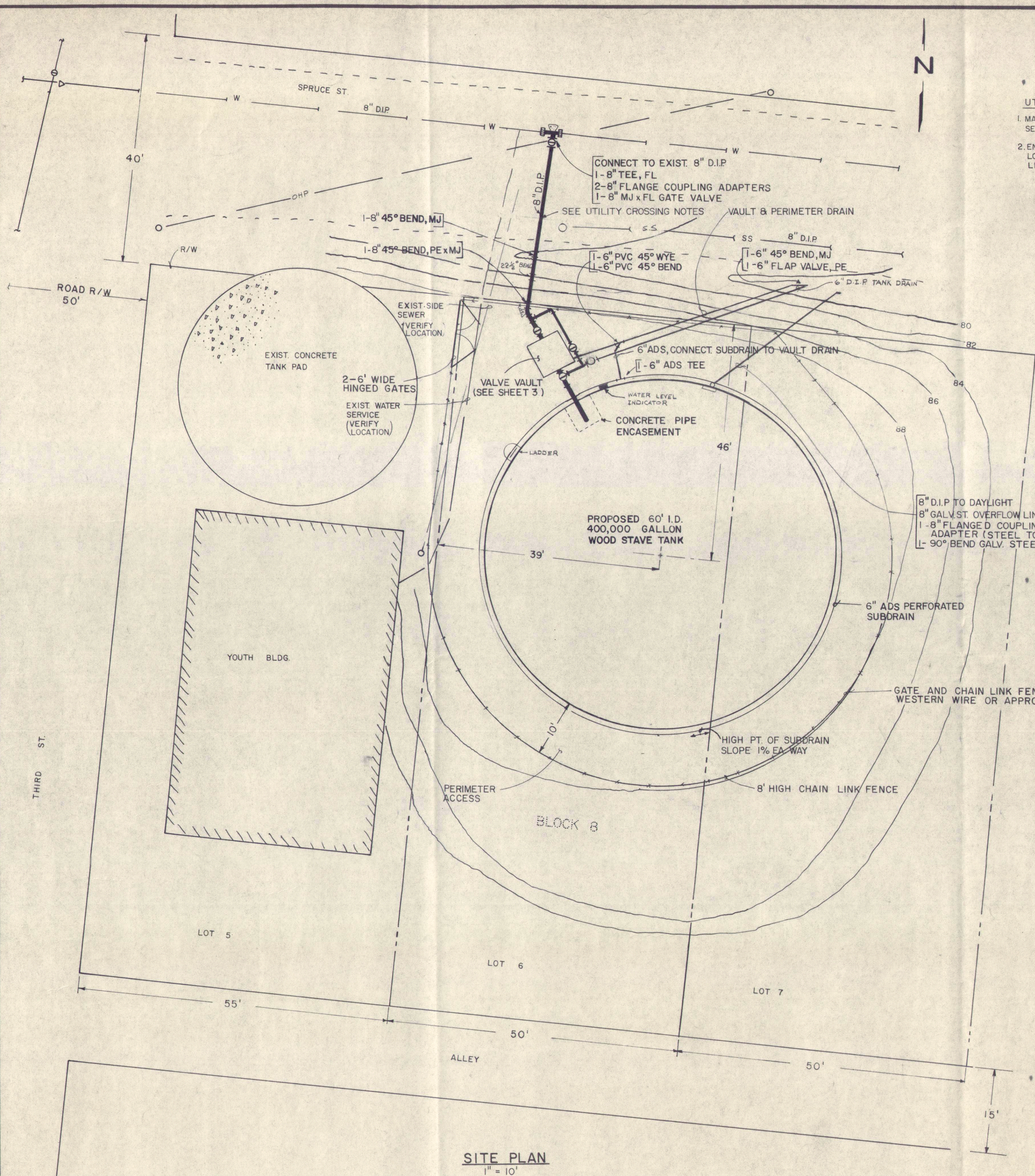
CITY ADMISTRATOR

DAVE PALMER

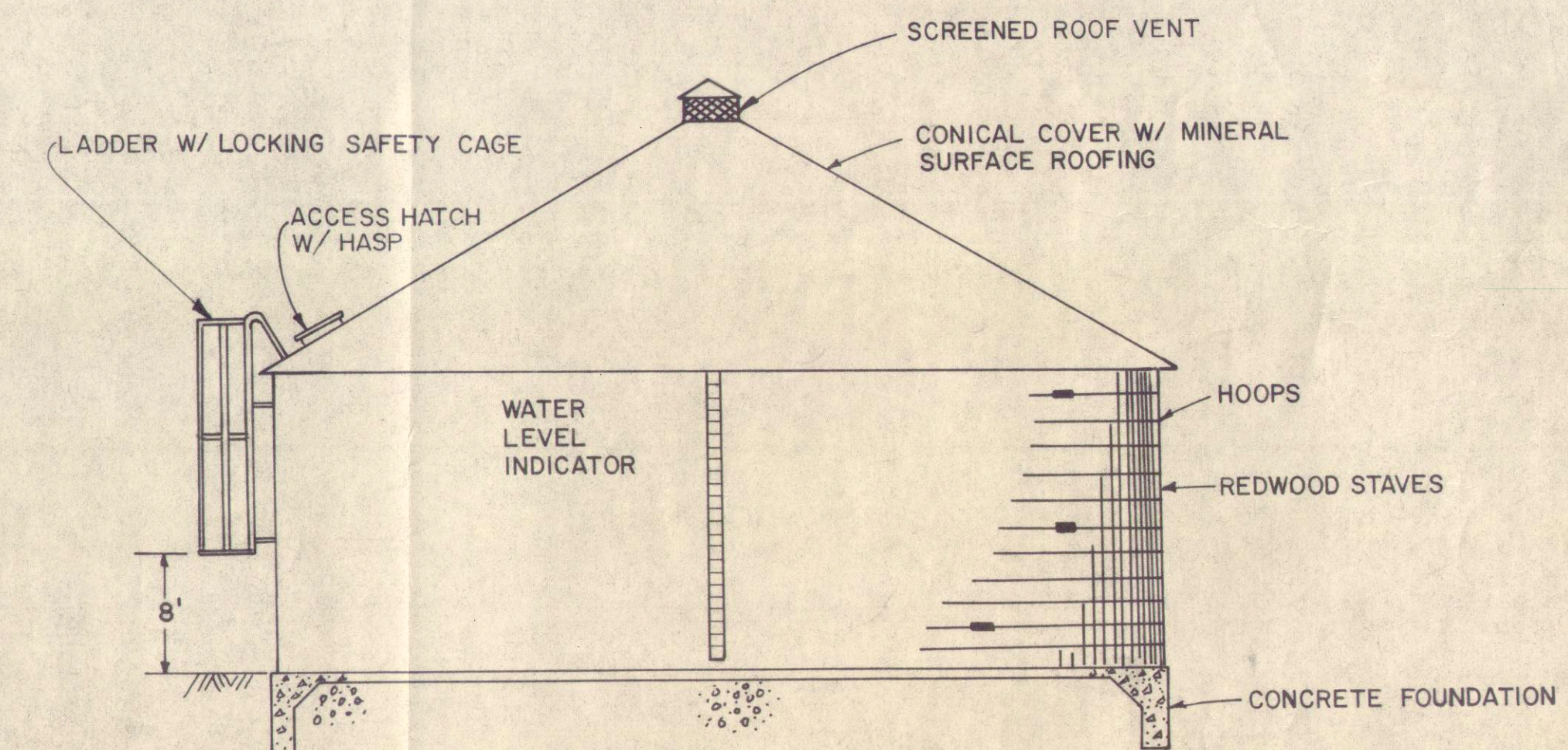
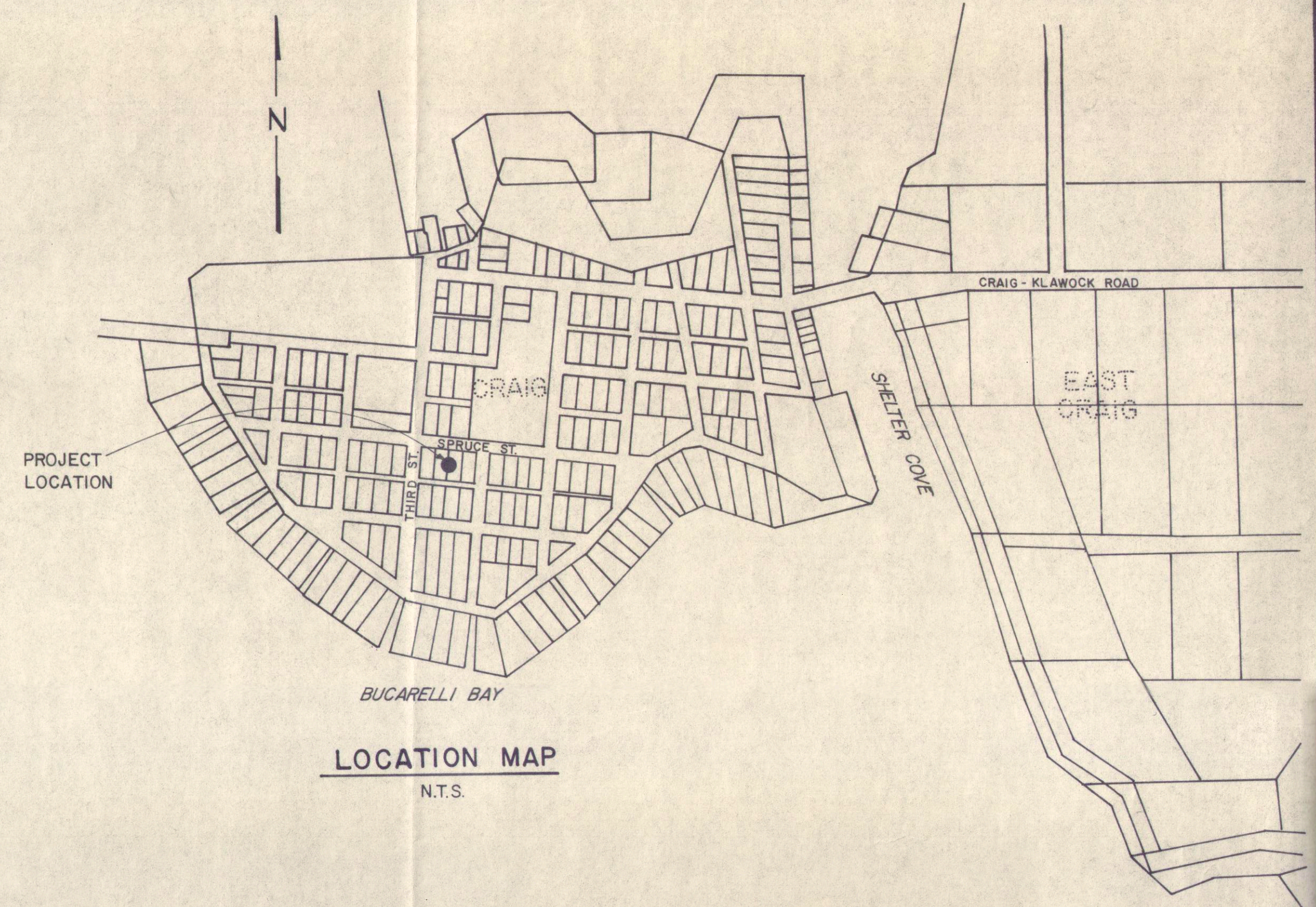
PUBLIC WORKS DIRECTOR

MIKE McKIMENS

REVISED TO CONFORM
WITH CONSTRUCTION RECORDS
By: SW/S
Ck'd: KPC
Date: 1/20/86
CONSTRUCTION INFORMATION
SUPPLIED BY CITY OF CRAIG

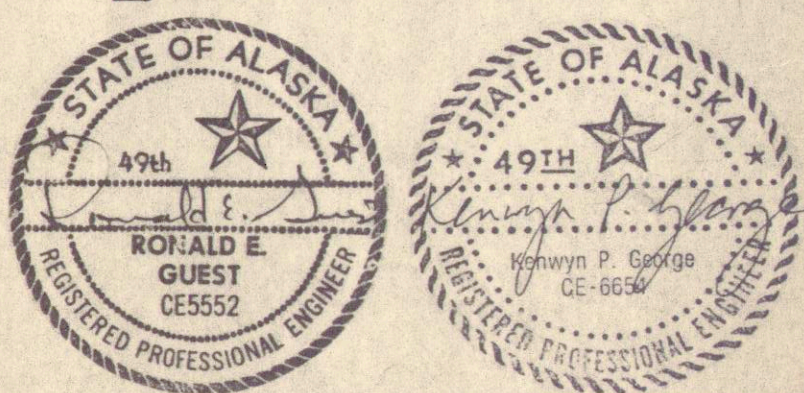


UTILITY CROSSING NOTES
 1. MAINTAIN 18" VERTICAL SEPARATION BETWEEN SEWER AND WATERLINES AT ALL POINTS OF CROSSING
 2. ENCASE WITH CONCRETE ALL WATERLINE JOINTS LOCATED WITHIN 10' OF EXISTING SANITARY SEWER LINE.



REVISED TO CONFORM WITH CONSTRUCTION RECORDS
 By: SWS
 Ck'd: KPG
 Date: 1/20/85
 CONSTRUCTION INFORMATION SUPPLIED BY CITY OF CRAIG

TYPICAL RESERVOIR ELEVATION
 N.T.S.



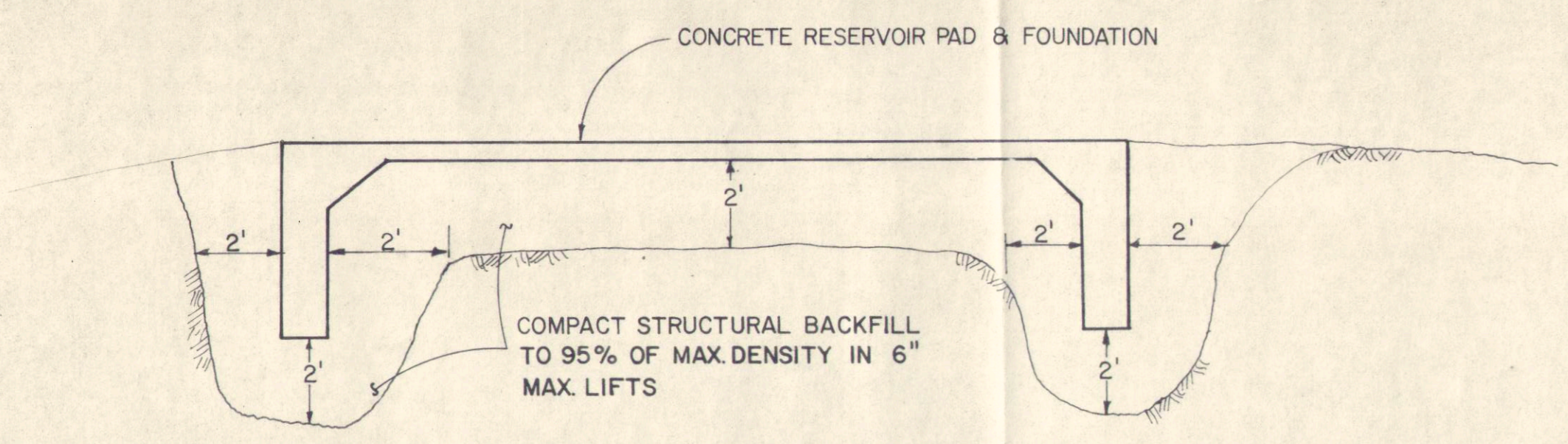
| | | | |
|-----|---------|-----|------------------------------------|
| No. | DATE | BY | REVISION |
| 1 | 5-17-85 | SWS | CHANGED FITTINGS ON OVERFLOW LINE. |

| | | |
|----------------------|-------------------|---------------------|
| Job No. 4910-4301-01 | Designed: SWS/KPG | Proj. Engr. GLD/KPG |
| SCALE: AS SHOWN | Drawn by: SWS | Approved by: REG |
| | Checked by: GLD | Date: 4/85 |

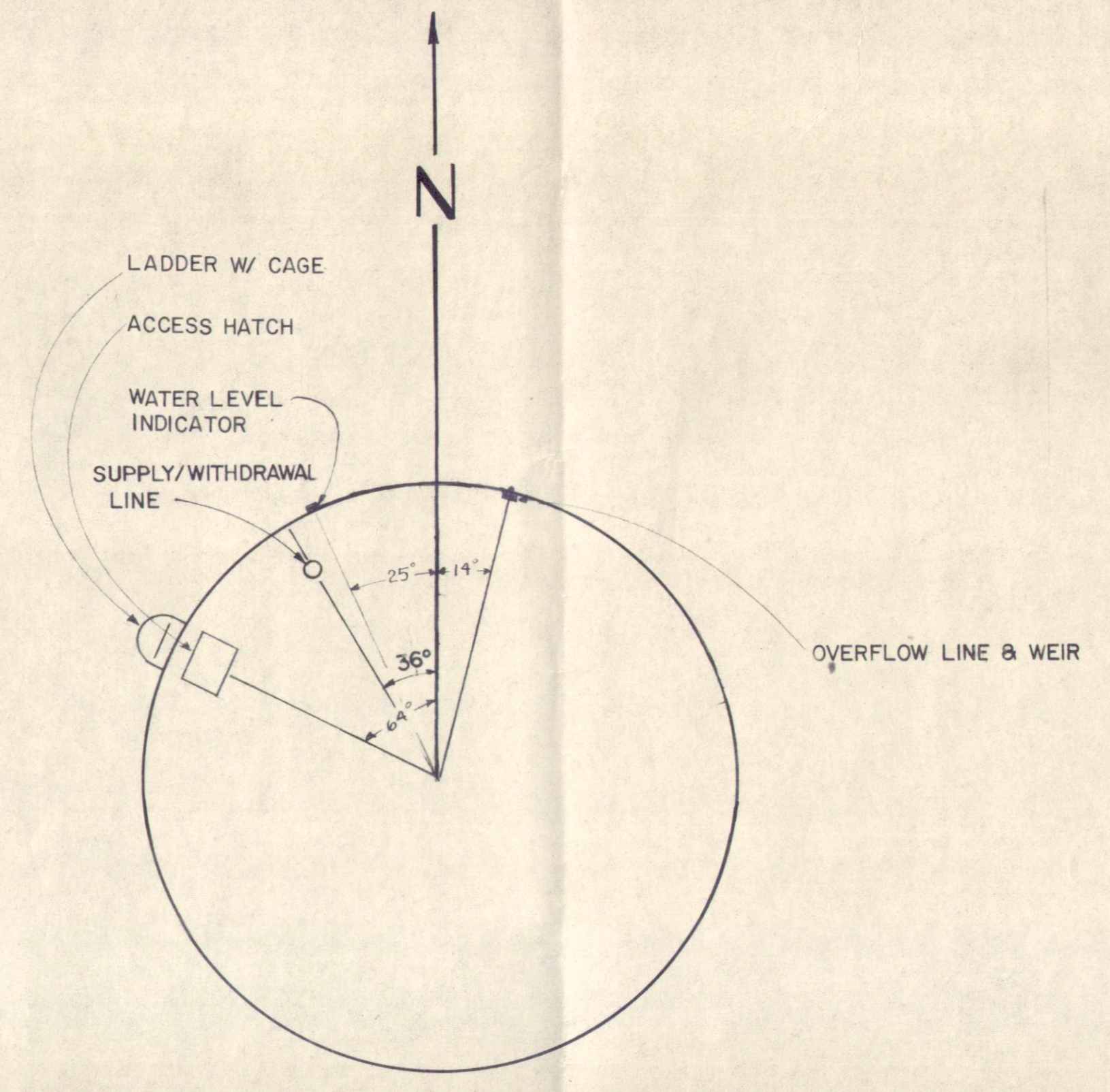
URS ENGINEERS
 Engineering and Environmental Consultants
 JUNEAU, ALASKA

CITY OF CRAIG

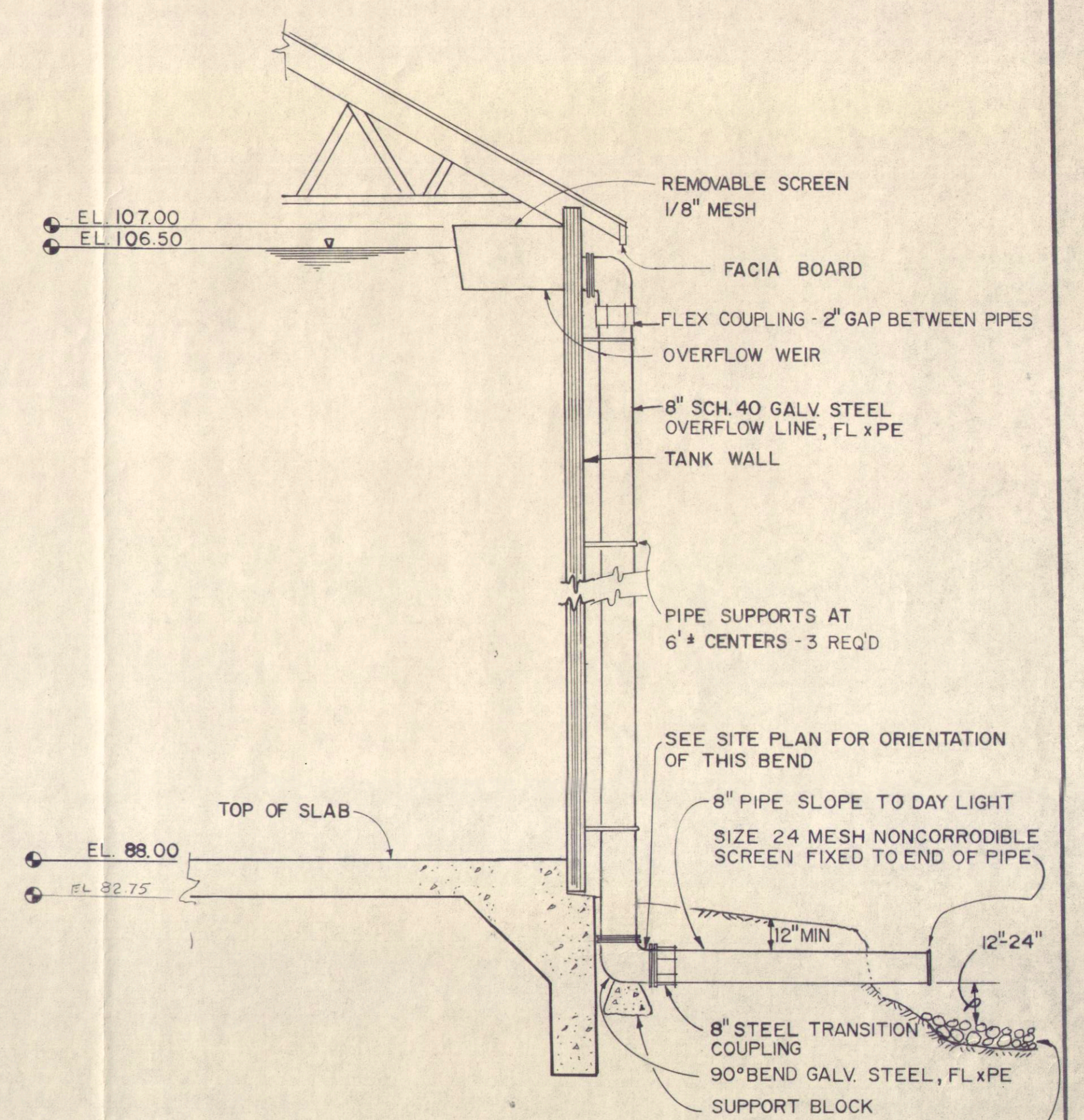
400,000 GALLON WOOD STAVE TANK



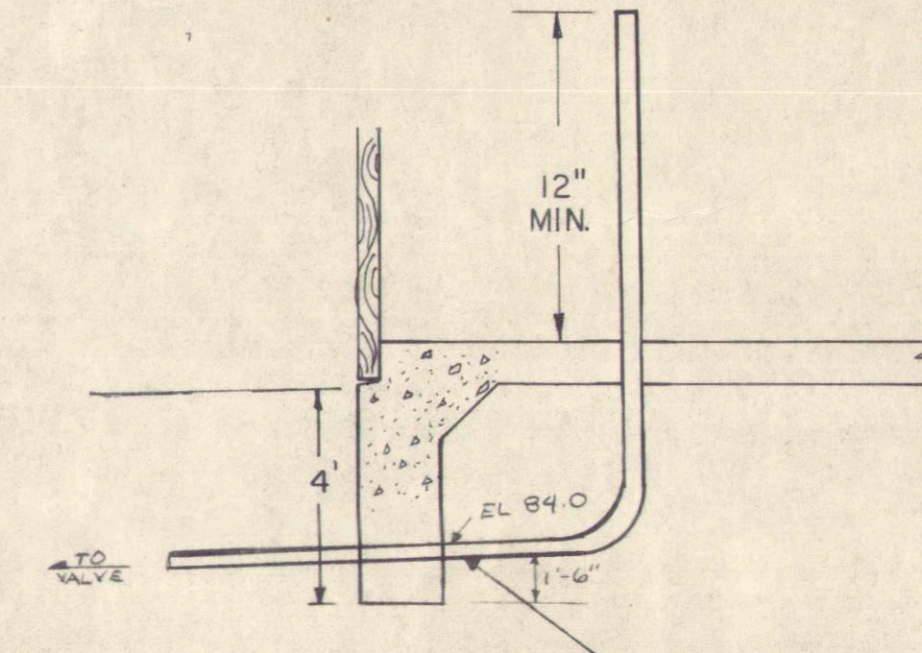
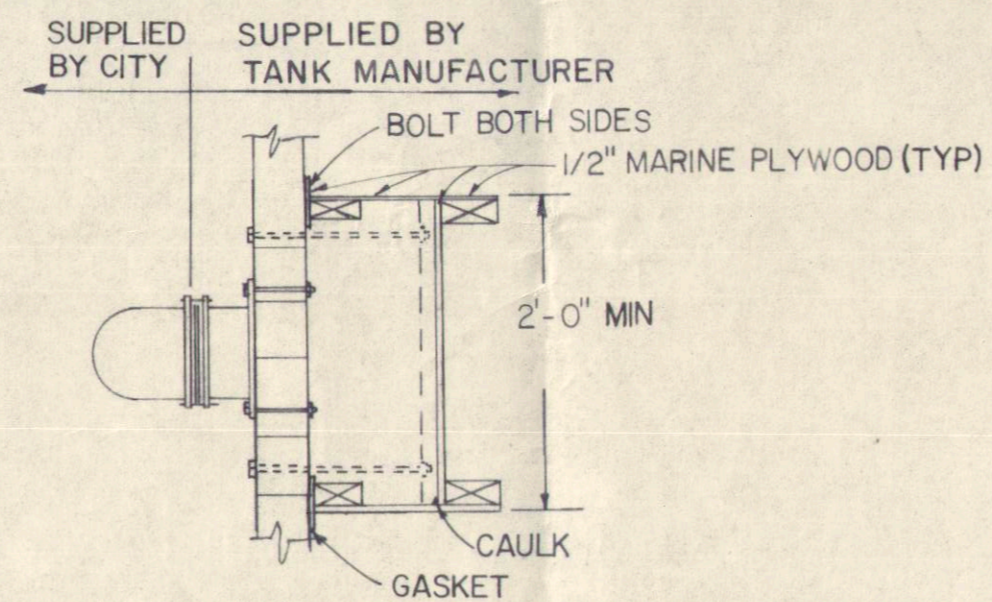
BACKFILL DETAIL
N.T.S.



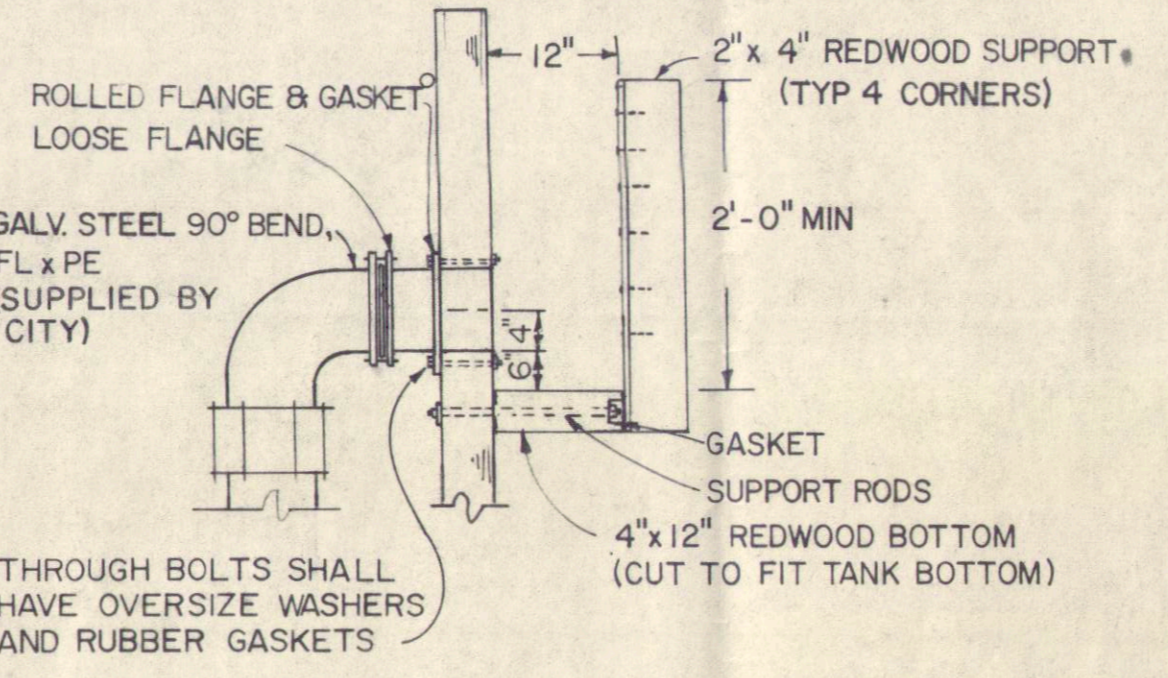
ORIENTATION PLAN
N.T.S.



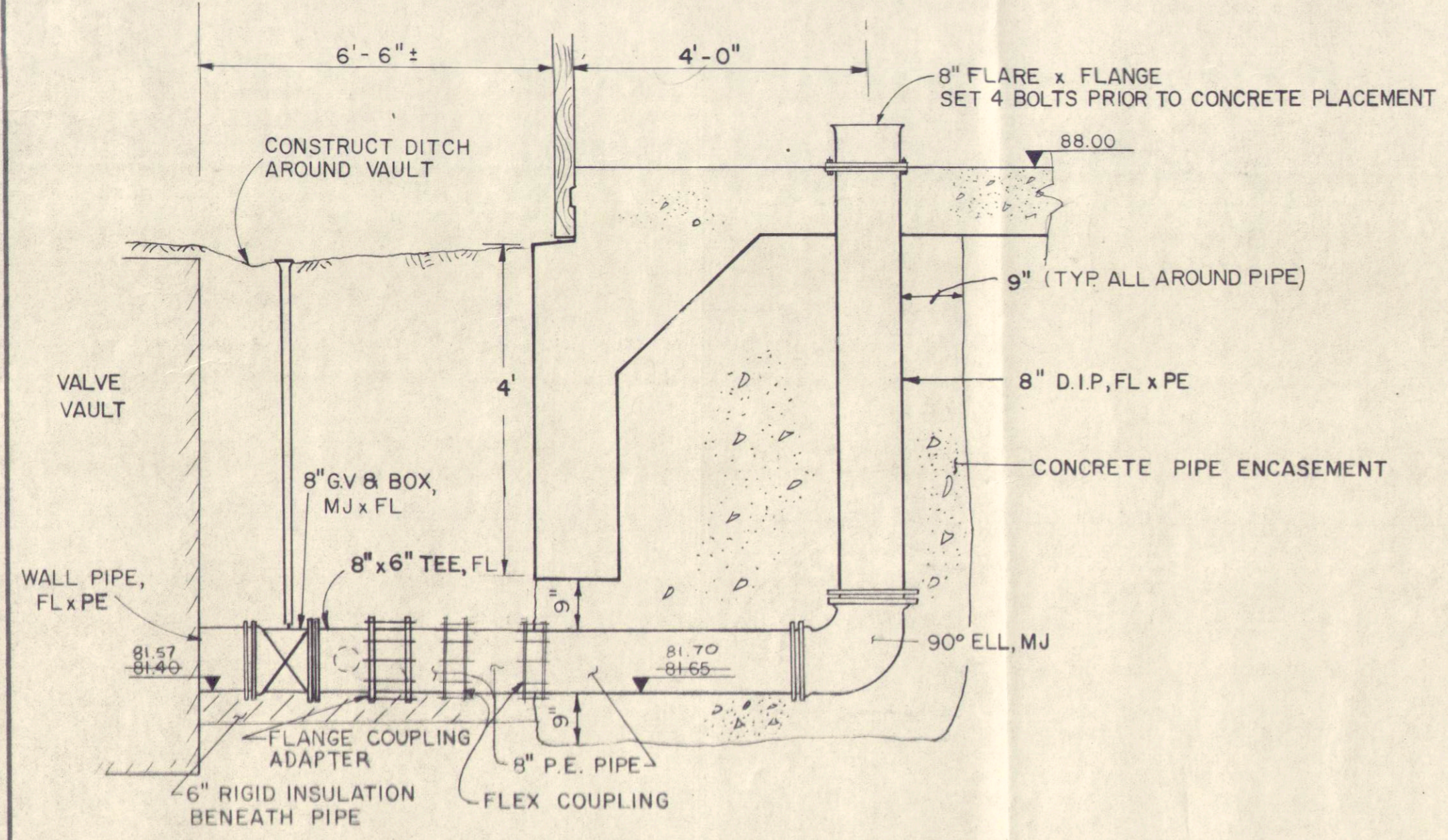
RESERVOIR ELEVATION DETAIL
N.T.S.



3/4\"/>



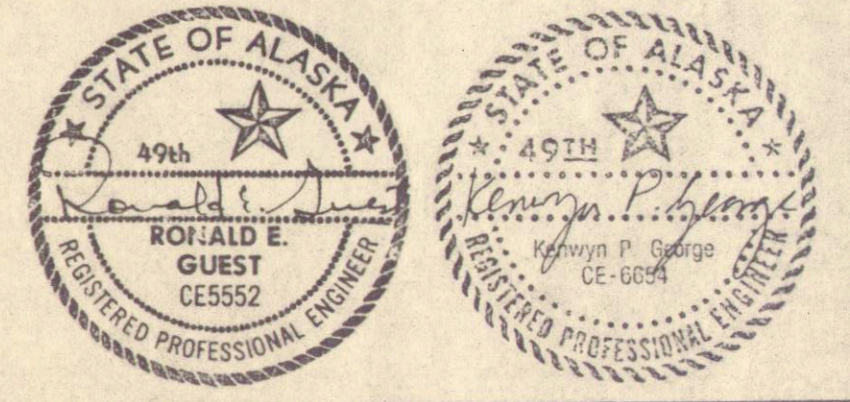
OVERFLOW WEIR DETAIL
N.T.S.



SUPPLY / WITHDRAWAL LINE DETAIL
N.T.S.

- NOTES:**
1. DUCTILE IRON PIPE SHALL BE CLASS 50
 2. BACKFILL & BEDDING FOR PIPES SHALL BE CLEAN GRANULAR MATERIAL AND SHALL CONTAIN NO STONES LARGER THAN 3". CLAY OR SILTY NATIVE TRENCH MAT'L SHALL NOT BE USED.
 3. BEND ALL REBAR AROUND PIPE PENETRATIONS TO MAINTAIN 2 1/2" COVER.
 4. ALL STEEL PIPE, PIPE SUPPORTS, WEIR BOX, NUTS, BOLTS, AND MISCELLANEOUS METAL INSIDE THE TANK SHALL BE HOT DIP GALVANIZED

REVISED TO CONFORM WITH CONSTRUCTION RECORDS
By: SWS
Ck'd: KPG
Date: 1/20/85
CONSTRUCTION INFORMATION SUPPLIED BY CITY OF CRAIG



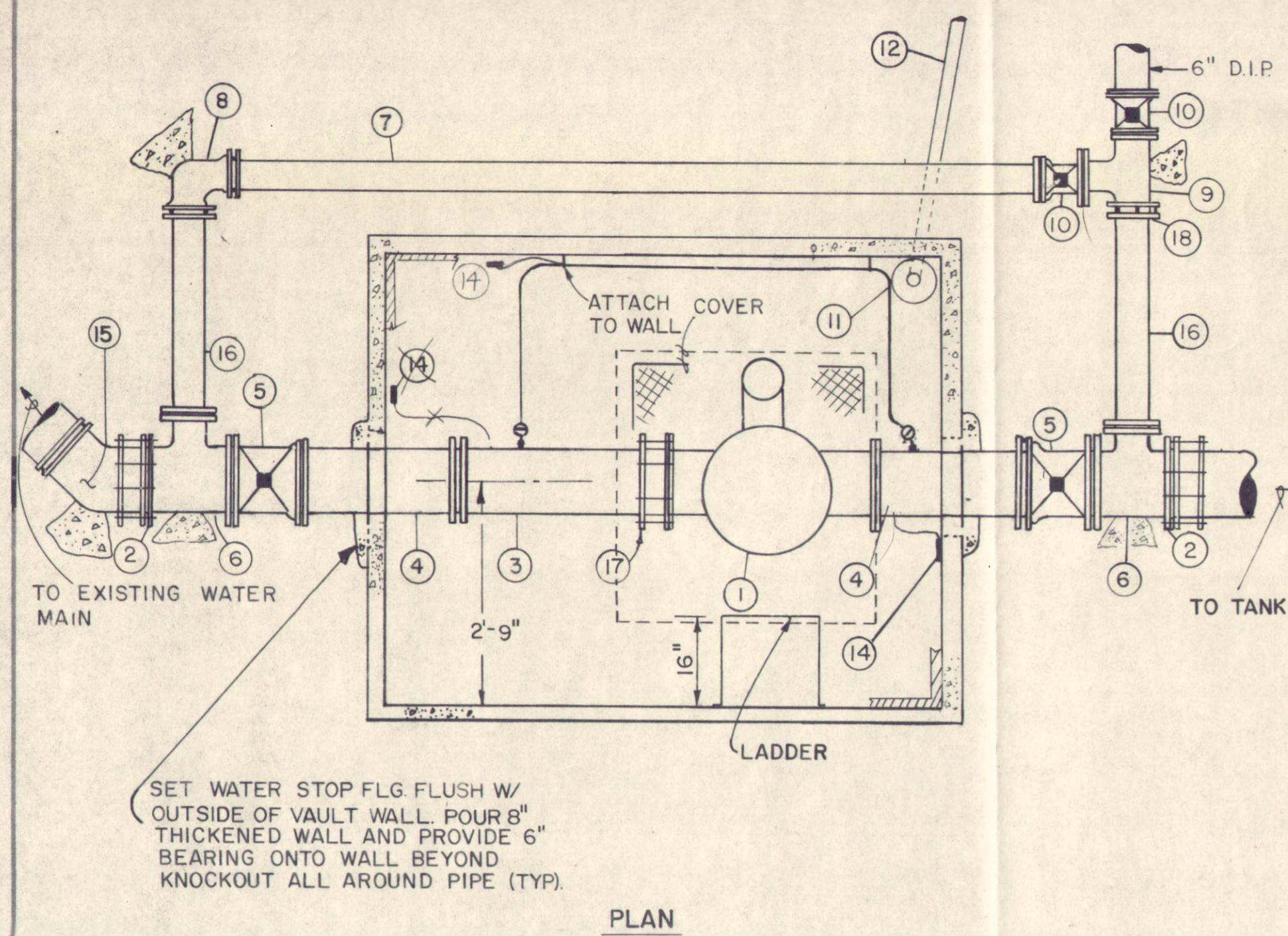
| | | | | | | |
|-----|---------|-----|---|----------------------|------------------|--------------------|
| 3 | 7-16-85 | KPG | ADDED EROSION CONTROL & SCREEN TO OVERFLOW | Job No. 4910 4301 01 | Designed KPG/SWS | Proj Engr. GLD/KPG |
| 2 | 5-17-85 | SWS | ADDED NOTE ON OVERFLOW WEIR DETAIL | SCALE: N.T.S. | Drawn by SWS | Approved by SWS |
| 1 | 5-17-85 | SWS | CHANGED FITTINGS ON OVERFLOW LINE TO AGREE W/SH-1 | | Checked by GLD | Date: 4/85 |
| No. | DATE | BY | REVISION | | | |

URS ENGINEERS
Engineering and Environmental Consultants
Juneau Alaska

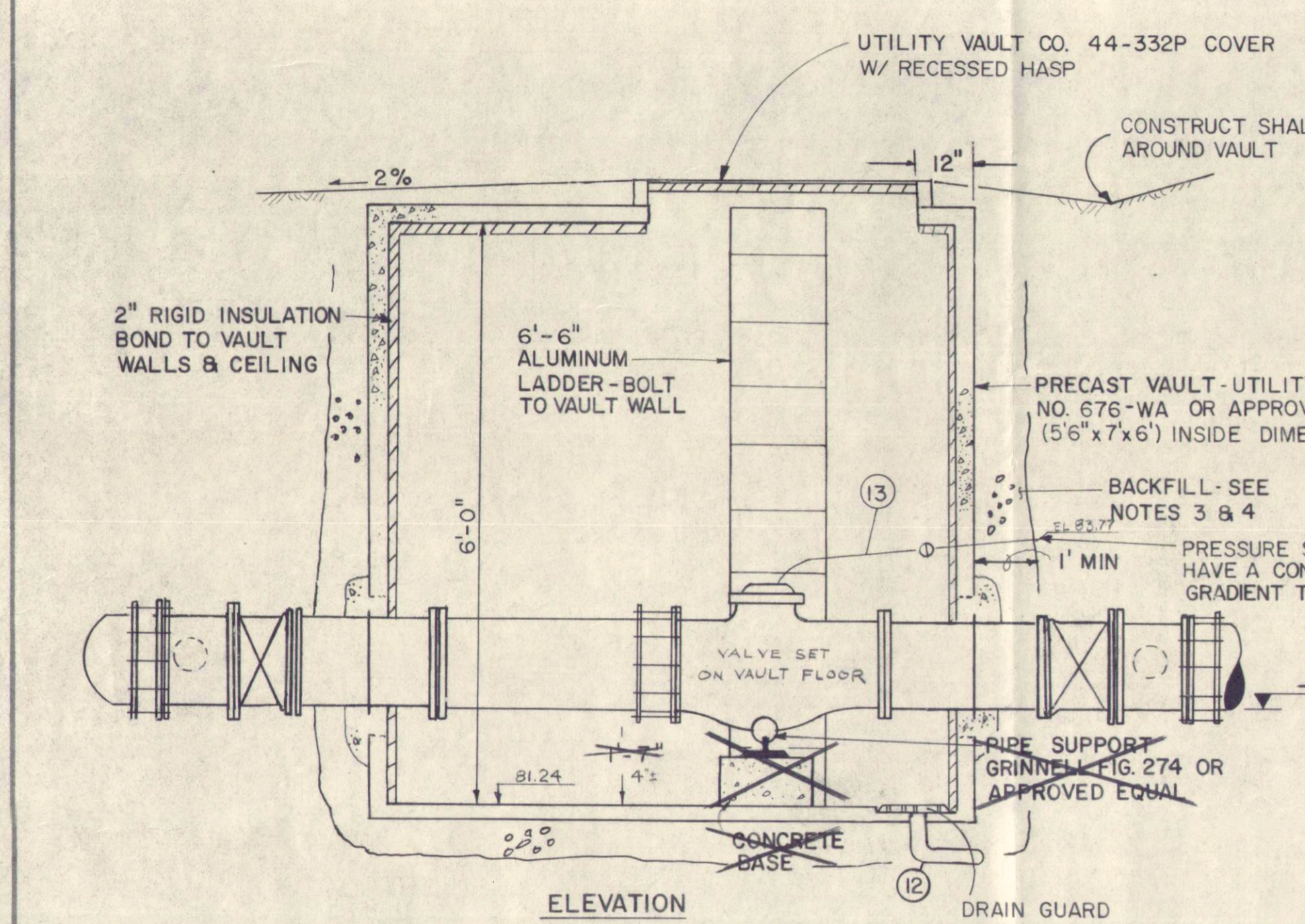
CITY OF CRAIG

**400,000 GALLON
WOOD STAVE TANK**

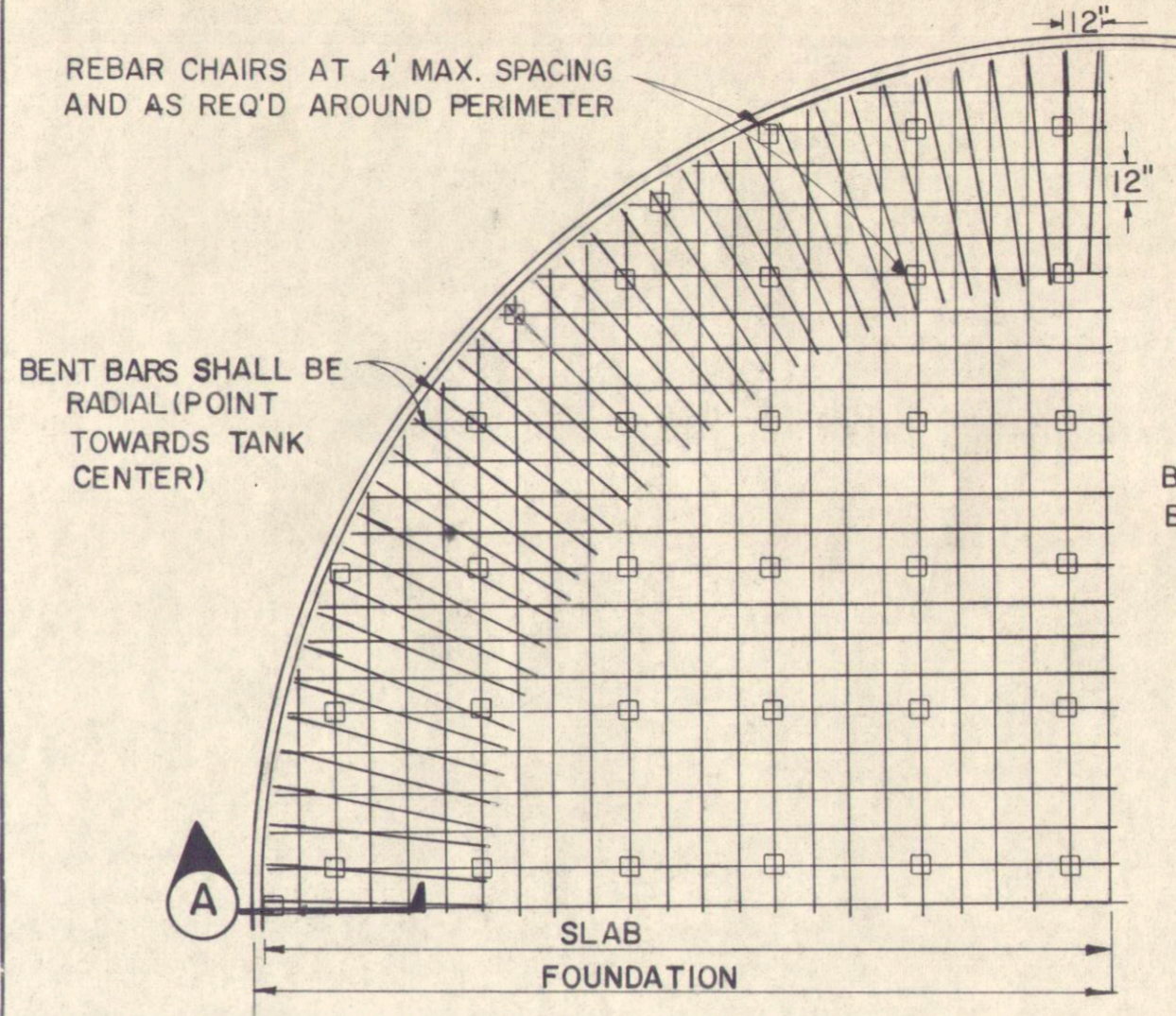
SHEET
2
3



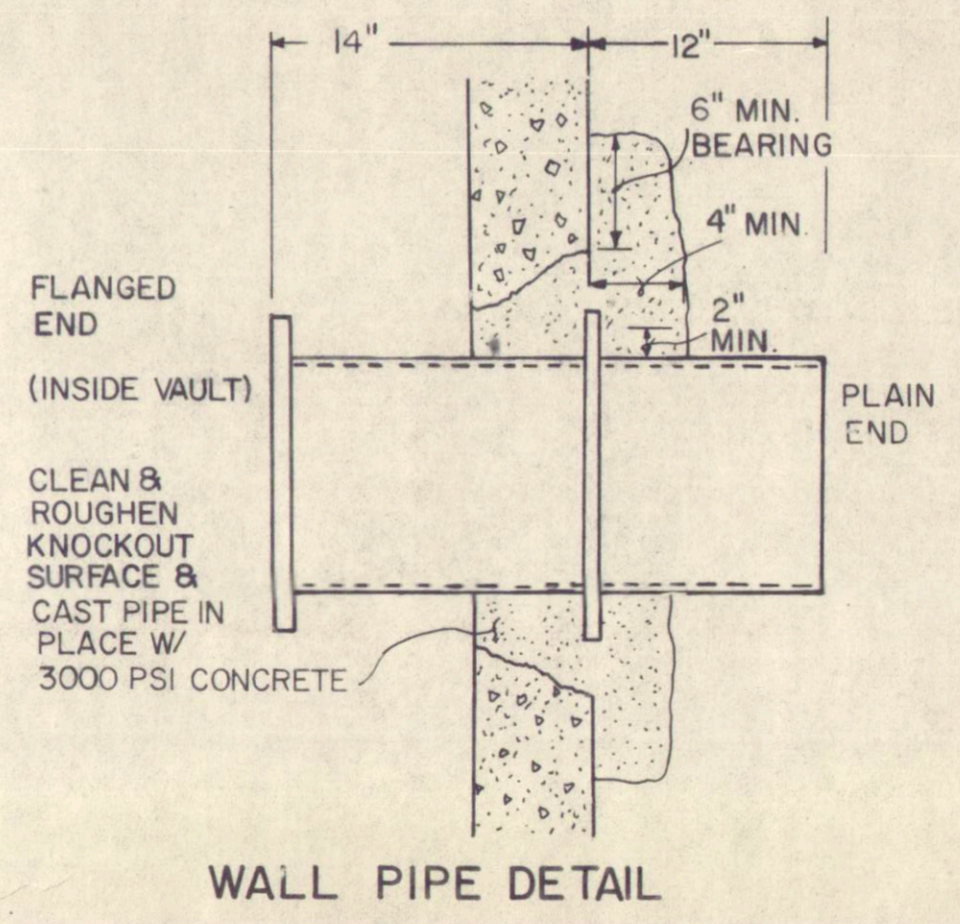
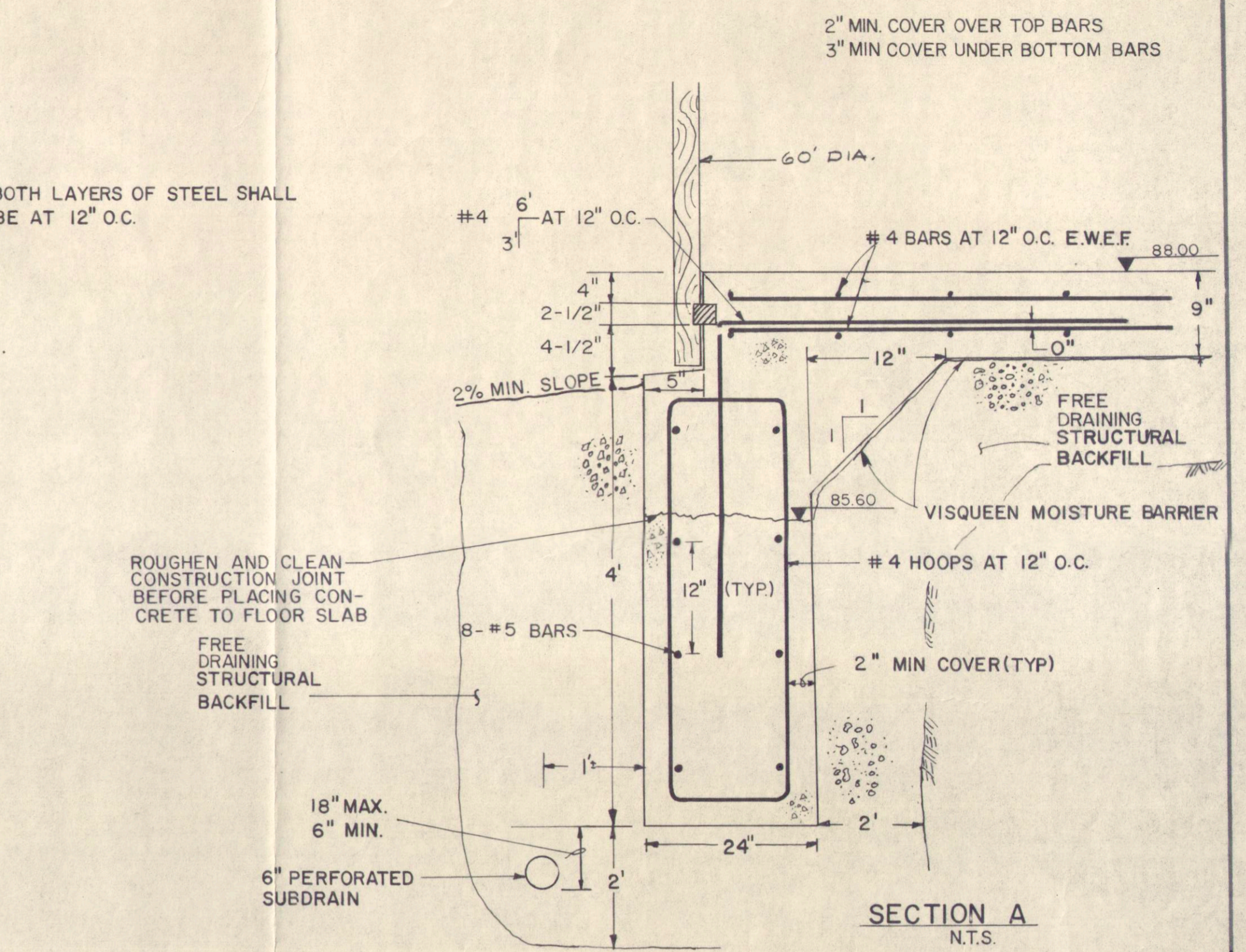
| ITEM | QUANT. | DESCRIPTION |
|------|--------|---|
| 1 | 1 | 8" ALTITUDE CONTROL VALVE, FL (SEE NOTE 5) |
| 2 | 2 | 8" FLANGED COUPLING ADAPTER |
| 3 | 1 | 8" D.I.P., FL x PE |
| 4 | 2 | 8" WALL PIPE W/ WATER STOP, FL x PE |
| 5 | 2 | 8" GATE VALVE, MJ x FL |
| 6 | 2 | 8" x 6" TEE, FL |
| 7 | 1 | 6" PIPE, PE |
| 8 | 1 | 6" 90° ELL, MJ x MJ |
| 9 | 1 | 6" TEE, FL |
| 10 | 2 | 6" GATE VALVE, MJ x FL |
| 11 | 1 | 1" TYPE K COPPER CONSTANT SUPPLY LINE W/ CORP STOPS |
| 12 | 1 | 6" PVC VAULT DRAIN LINE |
| 13 | 1 | 3/4" TYPE K COPPER PRESSURE SENSING LINE W/ CURB STOP |
| 14 | 1 | PRESSURE GAGE ASSEMBLY |
| 15 | 1 | 45° BEND, MJ x PE |
| 16 | 2 | 6" FLANGE x PE PIPE |
| 17 | 1 | 8" FLANGED COUPLING W/ ANCHOR STUDS, 4 REQUIRED, ANCHOR BOSSES TO BE FACTORY INSTALLED. |
| 18 | 1 | 6" FLANGED COUPLING ADAPTER |



- NOTES:**
- DESIGN LOADS:
ROOF L.L. SHALL BE AN H2O HIGHWAY LOADING
SOIL LOADING ON WALLS SHALL BE 45 PCF.
EQUIVALENT FLUID PRESSURE
 - PAINT ALL GROUTED JOINTS AND PIPE PENETRATIONS W/ 2 COATS KOPPERS "BITUMASTIC BLACK SOLUTION", PORTER "TARMASTIC 100" OR APPROVED EQUAL
 - OVER-EXCAVATE 1' BELOW BOTTOM OF VAULT AND BACKFILL W/ 1' OF STRUCTURAL BACKFILL
 - BACKFILL AROUND VAULT WALLS W/ CLEAN GRANULAR MATERIAL
 - ALTITUDE CONTROL VALVE TO BE CLAYTON 210-16 TWO-WAY FLOW VALVE WITH A CONTROL SPRING OF RANGE 5 TO 40 FEET, OR APPROVED EQUAL.



REBAR LAYOUT
SYMMETRICAL ABOUT BOTH CENTERLINES
N.T.S.

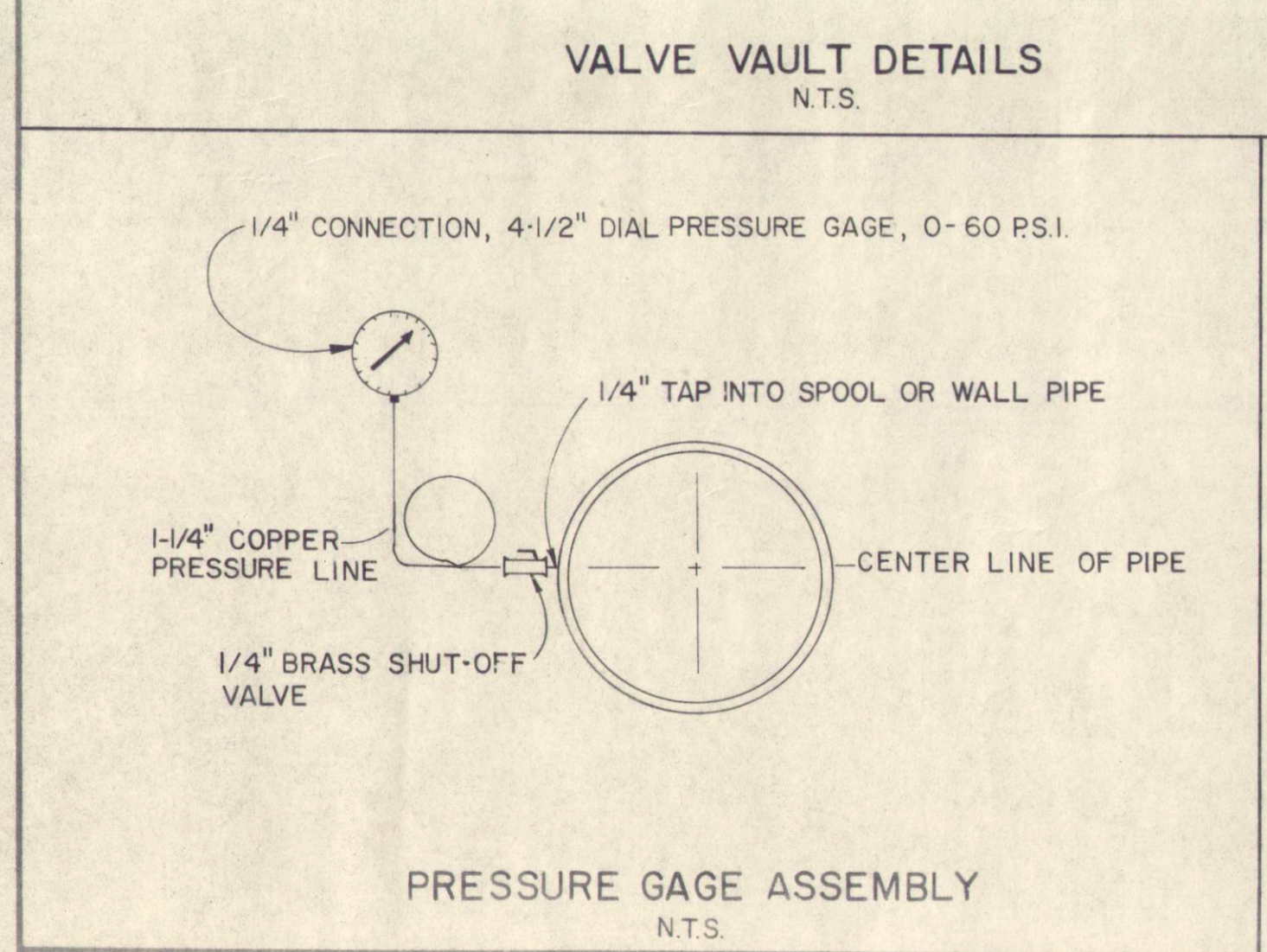


WALL PIPE DETAIL

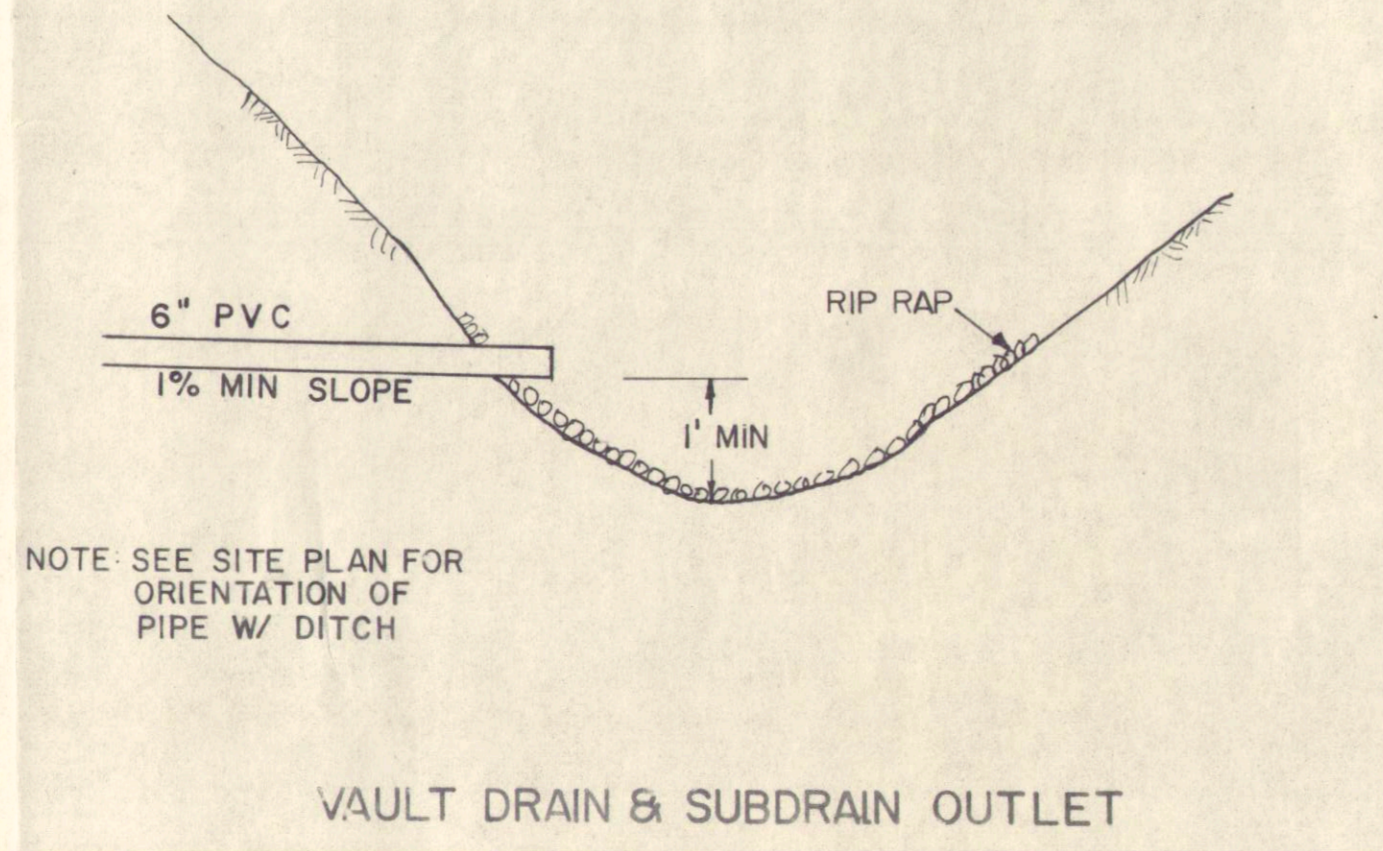
FOUNDATION NOTES

- MIN 28 DAY CONCRETE COMPRESSIVE STRENGTH SHALL BE 3000 PSI
- MAX SIZE COURSE AGGREGATE, SHALL BE 1 1/2"
- MIN. CEMENT CONTENT SHALL BE 6 SACKS PER CU. YD.
- MAX. WATER / CEMENT RATIO SHALL BE 0.45
- AIR CONTENT SHALL BE 5% MIN
- MAX SLUMP SHALL BE 3"
- REINFORCING STEEL SHALL BE GRADE 60 DEFORMED BARS
- MIN. LAP FOR # 4 BARS SHALL BE 18"
" " " # 5 BARS " " 24"
" " " # 6 BARS " " 30"
- PROTECT VISQUEEN MOISTURE BARRIER FROM CONSTRUCTION DAMAGE
- SEE PACIFIC WOOD TANK DRAWING FOR MANUFACTURERS REQUIREMENTS FOR BASE SLAB. AT ROOF COLUMNS, SLAB TO BE THICKENED TO 12" THICKNESS AND COLUMN BASES TO BE SET IN THE CONCRETE.

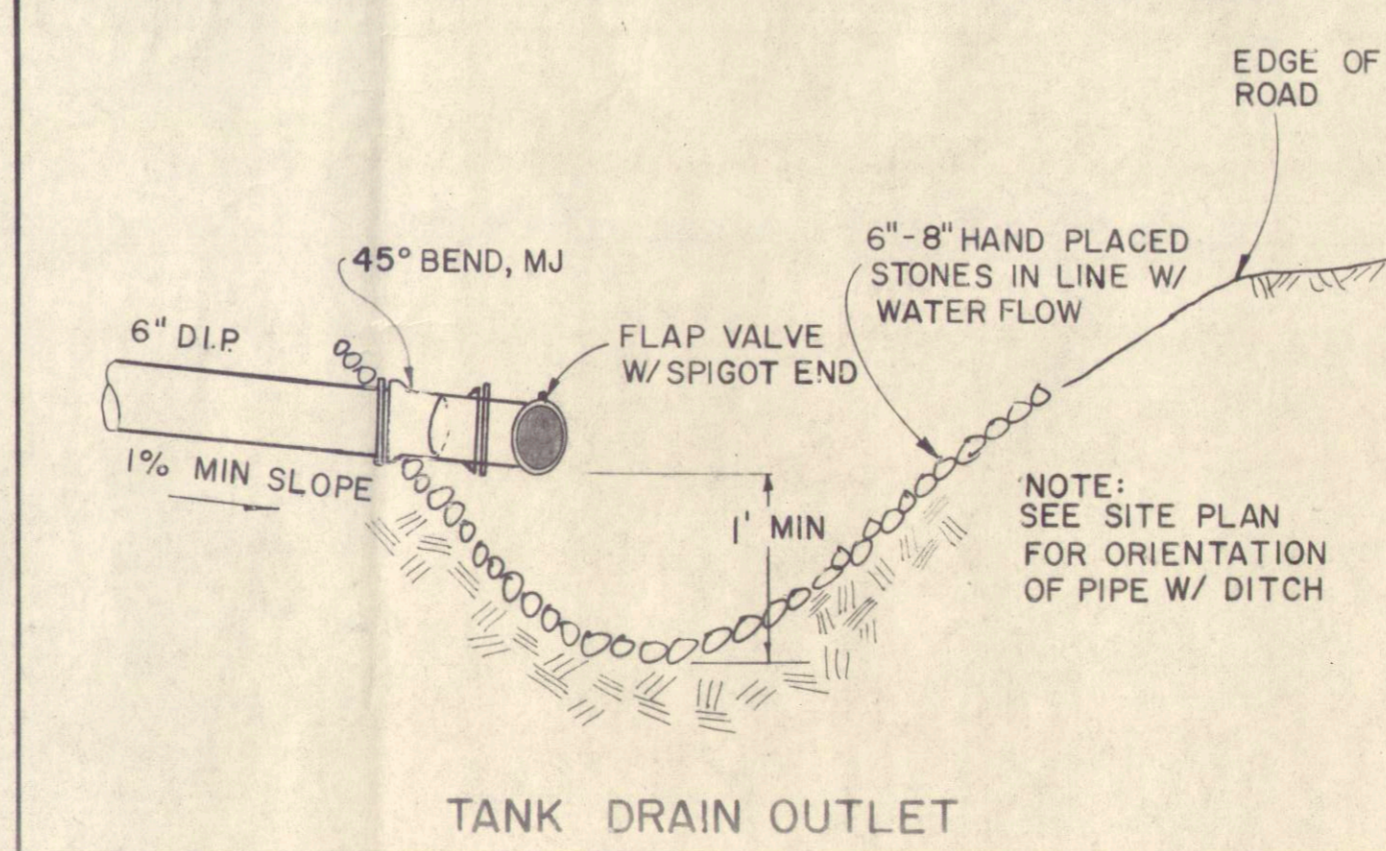
REVISED TO CONFORM WITH CONSTRUCTION RECORDS
By: SWS
Ck'd: KPG
Date: 1/20/85
CONSTRUCTION INFORMATION SUPPLIED BY CITY OF CRAIG



PRESSURE GAGE ASSEMBLY
N.T.S.



VAULT DRAIN & SUBDRAIN OUTLET



TANK DRAIN OUTLET

| | | | | | | |
|-----|---------|-----|--|---------------------|---------------------|----------------------|
| 2 | 7-15-85 | KPG | NOTE 10 PLUS SECTION A DIMENSIONS ADDED | Job No 4910-4301-C1 | Design: SWS/KPG/MTW | Prof. Eng: GLD / KPG |
| 1 | 5-17-85 | SWS | ADDED ANCHOR STUDS ON F.C.A. TO ALTITUDE VALVE, TIE RODS ELIMINATED. | Scale: N.T.S. | Drawn by: SWS | Approved by: REG |
| No. | DATE | BY | REVISION | | Drawn by: GLD | Date: 4/85 |

URS ENGINEERS
Engineering and Environmental Consultants
Juneau, Alaska

CITY OF CRAIG

400,000 GALLON WOOD STAVE TANK